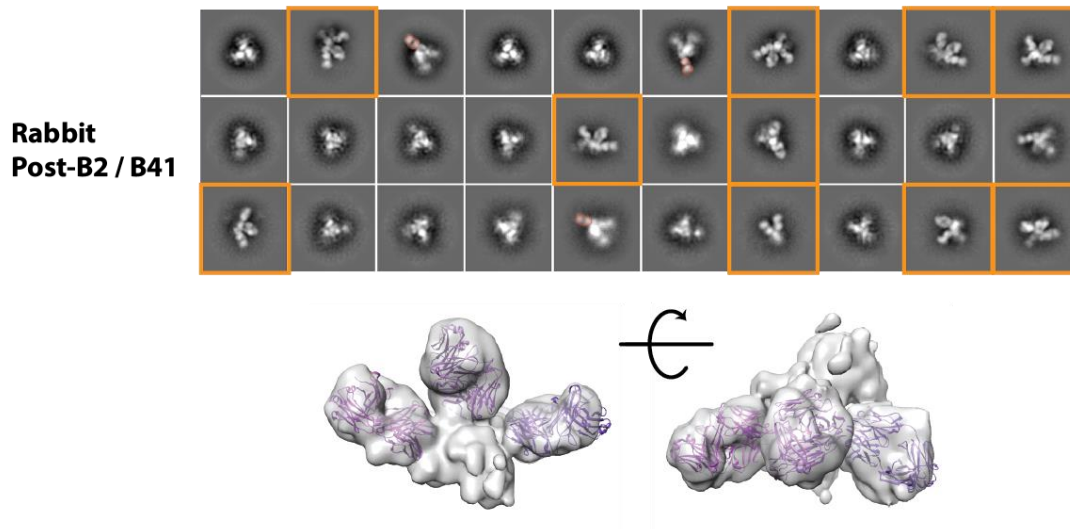
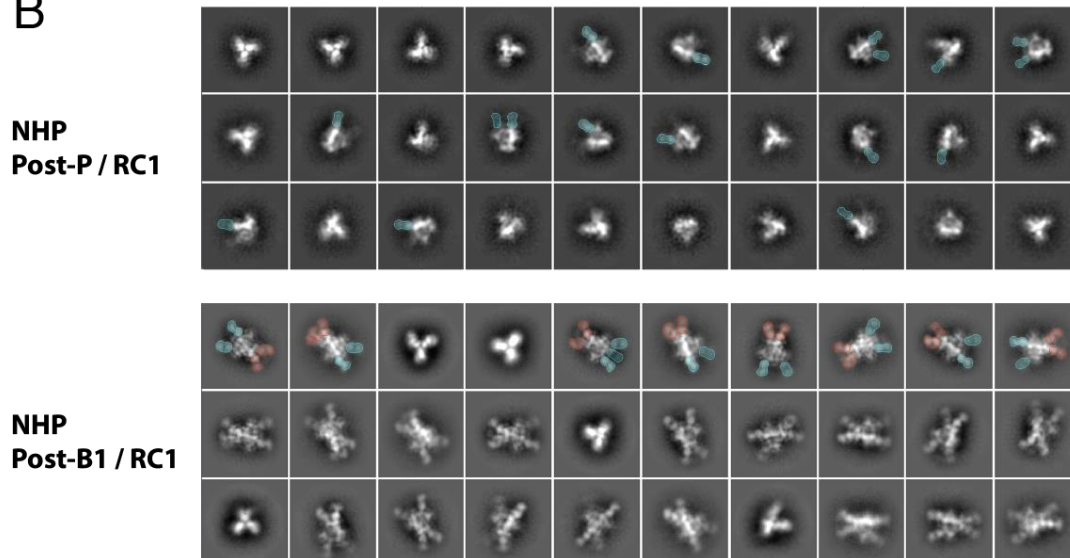


**A****B**

**Figure S4. Negative stain EM-based polyclonal epitope mapping (nsEMPEM) characterizations of rabbit Fabs bound to dissociated trimers and NHP 2D classes.**

**(A)** Negative-stain 2D classes of rabbit post-B2 Fab(s) complexed with B41 SOSIP.664 v4.2 trimer are shown. Base-binding Fab(s) were observed bound to Env trimers (red), in addition to Fabs bound to disassociated protomers (orange boxes). A low-resolution 3D reconstruction of a Fab-protomer class is shown. Fab coordinates (PDB 5UD9) (purple cartoon) were docked into the EM density.

**(B)** Negative-stain 2D classes of NHP 1 (DGJI) polyclonal Fabs bound to RC1 SOSIP.664 trimers 2 weeks post-prime and post-boost 1 are shown. Fabs targeting the V3-glycan patch (cyan) and the base of the trimer (red) are highlighted in select 2D classes.