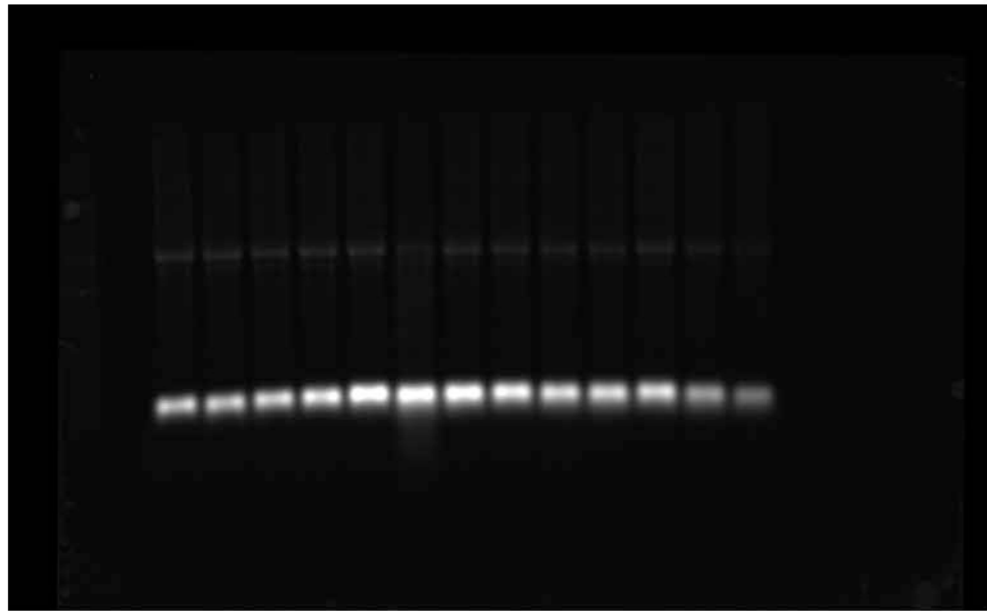
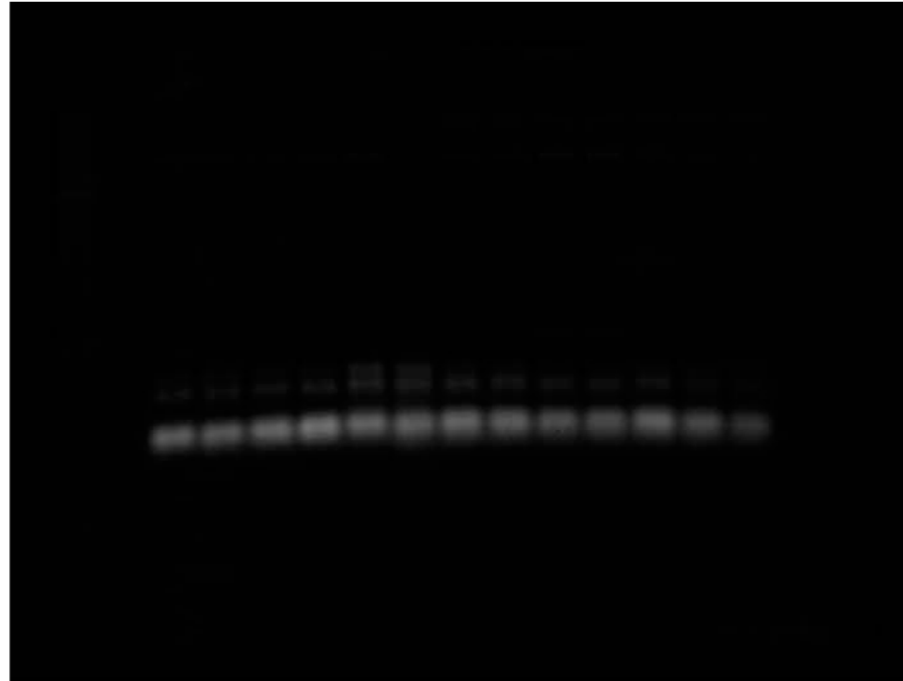


Figure 1 source data 1

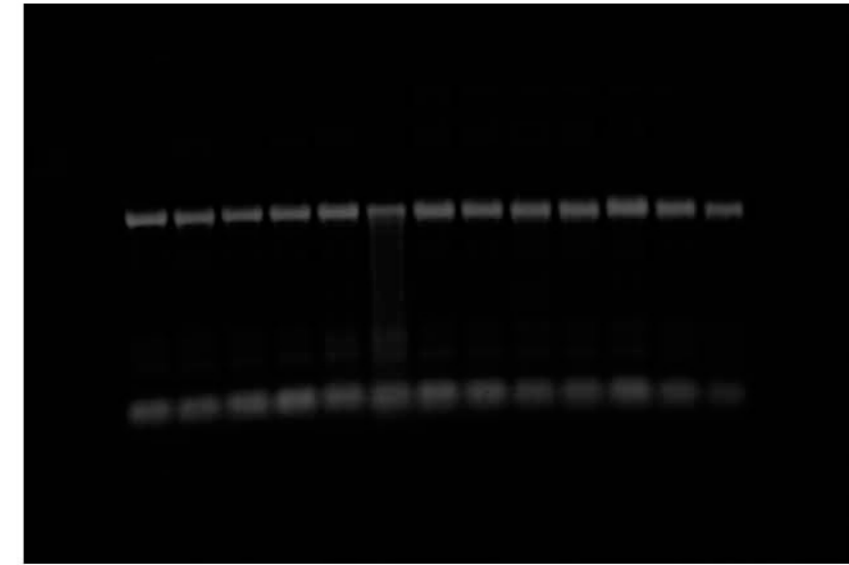
unedited northern, 7SL probe



unedited northern, 5.8S probe

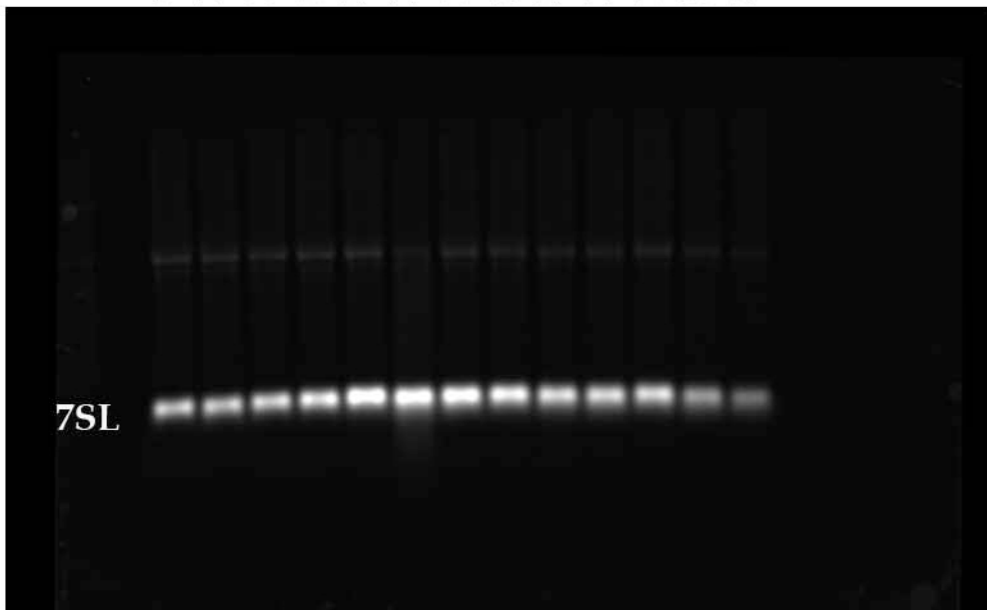


unedited northern, 18S probe



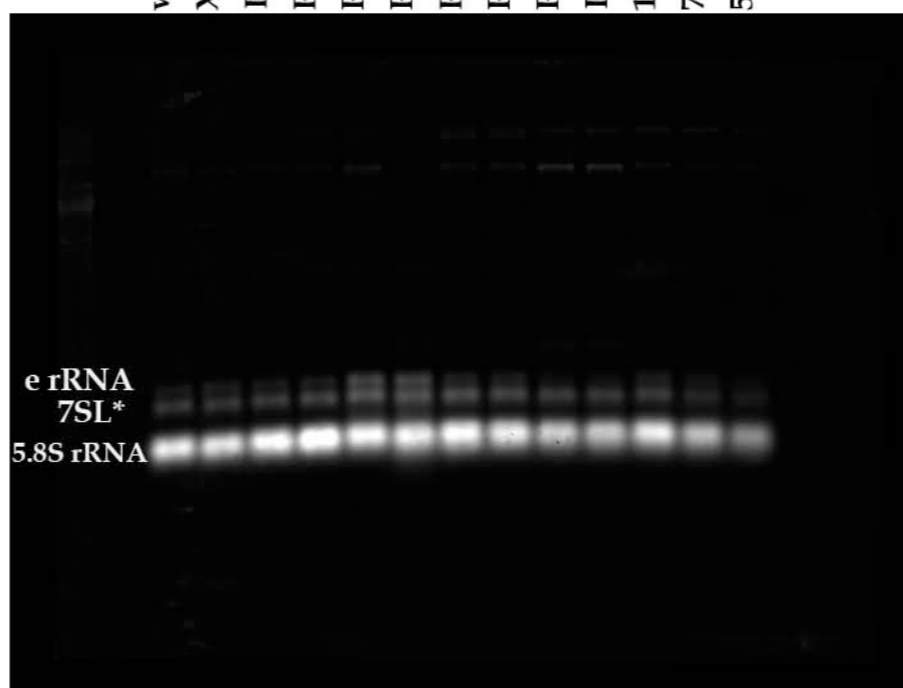
labelled northern, 7SL probe

wild type- Xrp1^{+/+}
Xrp1^{+/-}
RpS18^{+/-}
RpS18^{+/-}; Xrp1^{+/-}
RpL27A^{+/-}
RpL27A^{+/-}; Xrp1^{+/-}
RpS3^{+/-}
RpS3^{+/-}; Xrp1^{+/-}
RpL14^{+/-}
RpL14^{+/-}; Xrp1^{+/-}
100% wild type
75% wild type
50% wild type



labelled northern, 5.8 probe

wild type- Xrp1^{+/+}
Xrp1^{+/-}
RpS18^{+/-}
RpS18^{+/-}; Xrp1^{+/-}
RpL27A^{+/-}
RpL27A^{+/-}; Xrp1^{+/-}
RpS3^{+/-}
RpS3^{+/-}; Xrp1^{+/-}
RpL14^{+/-}
RpL14^{+/-}; Xrp1^{+/-}
100% wild type
75% wild type
50% wild type



labelled northern, 18S probe

wild type- Xrp1^{+/+}
Xrp1^{+/-}
RpS18^{+/-}
RpS18^{+/-}; Xrp1^{+/-}
RpL27A^{+/-}
RpL27A^{+/-}; Xrp1^{+/-}
RpS3^{+/-}
RpS3^{+/-}; Xrp1^{+/-}
RpL14^{+/-}
RpL14^{+/-}; Xrp1^{+/-}
100% wild type
75% wild type
50% wild type

