

SUPPLEMENTARY MATERIAL

Rapidity of Improvement in Signs/Symptoms of Moderate-to-Severe Atopic Dermatitis by Body Region with Abrocitinib in the Phase 3 JADE COMPARE Study

Andrew Alexis,¹ Marjolein de Bruin-Weller,² Stephan Weidinger,³ Weily Soong,⁴ Sebastien Barbarot,⁵ Ileana Ionita,⁶ Fan Zhang,⁶ Hernan Valdez,⁷ Claire Clibborn,⁸ Natalie Yin⁷

¹Weill Cornell Medical College, New York, NY, USA; ²University Medical Center Utrecht, Utrecht, Netherlands; ³University Hospital Schleswig-Holstein, Kiel, Germany; ⁴Alabama Allergy & Asthma Center, Clinical Research Center of Alabama, Birmingham, AL, USA; ⁵CHU de Nantes Hôtel Dieu, Nantes, France; ⁶Pfizer Inc., Groton, CT, USA; ⁷Pfizer Inc., New York, NY, USA; ⁸Pfizer Ltd., Surrey, United Kingdom

Corresponding author:

Claire Clibborn

Pfizer Ltd, Walton Oaks, Dorking Road

Tadworth KT20 7NS, Surrey, UK

Email: Claire.Clibborn@pfizer.com

Phone Number: +44 7554 110429

Table S1 Mean (SD) baseline SCORAD extent, intensity, pruritus, and sleep loss scores

	Placebo (N = 131)	Abrocitinib 100 mg QD (N = 238)	Abrocitinib 200 mg QD (N = 226)	Dupilumab 300 mg Q2W (N = 242)
SCORAD extent				
Head and neck (max 9)	5.1 (2.51)	4.8 (2.69)	4.7 (2.52)	4.6 (2.47)
Left upper limbs (max 9)	5.3 (2.49)	5.2 (2.48)	5.3 (2.32)	5.1 (2.27)
Right upper limbs (max 9)	5.4 (2.40)	5.2 (2.41)	5.4 (2.35)	5.1 (2.29)
Left lower limbs (max 18)	8.3 (5.52)	8.5 (5.42)	8.8 (5.21)	8.1 (4.75)
Right lower limbs (max 18)	8.3 (5.51)	8.5 (5.39)	8.8 (5.18)	8.0 (4.81)
Anterior trunk (max 18)	8.4 (5.40)	8.1 (5.20)	8.5 (5.32)	7.8 (5.42)
Back (max 18)	8.5 (5.64)	8.4 (5.39)	8.5 (5.71)	7.9 (5.43)
Genitals (max 1)	0.1 (0.31)	0.1 (0.28)	0.1 (0.27)	0.1 (0.23)
SCORAD intensity^a (max 3 for each)				
Erythema	2.5 (0.55)	2.4 (0.56)	2.5 (0.54)	2.5 (0.53)
Edema/papulation	2.2 (0.60)	2.2 (0.65)	2.2 (0.62)	2.3 (0.58)
Oozing/crusting	1.4 (0.97)	1.4 (0.96)	1.5 (0.93)	1.5 (0.82)
Excoriation	2.2 (0.72)	2.2 (0.70)	2.1 (0.71)	2.2 (0.67)
Lichenification	2.3 (0.59)	2.2 (0.71)	2.3 (0.62)	2.3 (0.61)
Dryness	2.3 (0.65)	2.1 (0.78)	2.2 (0.81)	2.2 (0.70)
SCORAD pruritus^b (max 10)	7.4 (1.57)	7.2 (1.65)	7.5 (1.58)	7.3 (1.58)
SCORAD sleep loss^c (max 10)	5.8 (2.67)	6.1 (2.42)	6.6 (2.26)	6.0 (2.62)

max maximum, Q2W every 2 weeks, QD once daily, SCORAD SCORing Atopic Dermatitis,

SD standard deviation

^a Each item is scored from 0 (none) to 3 (severe)

^b Visual Analogue Scale scored from no itch (0) to worst imaginable itch (10)

^c Visual Analogue Scale scored from no sleep loss (0) to worst sleep loss (10)

Table S2 Racial/ethnic categories

Black or African American
American Indian or Alaska Native
Asian
Native Hawaiian or Other Pacific Islander
White
Not Reported

Table S3 Mean (SD) baseline EASI body region scores by White or Asian race

		Placebo (N = 118)	Abrocitinib 100 mg QD (N = 230)	Abrocitinib 200 mg QD (N = 214)	Dupilumab 300 mg Q2W (N = 222)
White	Head and neck	2.8 (1.6)	2.8 (1.7)	2.9 (1.7)	2.8 (1.6)
	Upper limb	7.0 (3.0)	7.0 (3.2)	7.5 (3.2)	7.0 (2.8)
	Trunk	8.1 (4.5)	7.9 (4.3)	8.5 (4.8)	8.0 (4.5)
	Lower limb	11.2 (7.0)	12.1 (7.1)	12.8 (6.8)	11.9 (5.8)
Asian	Head and neck	3.6 (1.7)	2.8 (1.7)	3.3 (1.6)	3.4 (1.5)
	Upper limb	6.8 (3.2)	6.0 (3.3)	6.9 (3.3)	5.9 (3.0)
	Trunk	10.3 (4.5)	10.1 (4.9)	11.1 (4.4)	10.2 (5.5)
	Lower limb	12.3 (5.9)	12.7 (7.8)	12.9 (6.3)	11.2 (6.1)

EASI Eczema Area and Severity Index, *Q2W* every 2 weeks, *QD* once daily, *SD* standard deviation

Table S4 Kaplan-Meier median time to EASI-75 by body region among White and Asian individuals

		Placebo	Abrocitinib 100 mg QD	Abrocitinib 200 mg QD	Dupilumab 300 mg Q2W
Median time to EASI-75 in days (95% CI)					
White	Head and neck	N = 52	N = 130	N = 129	N = 125
		85 (58, 113)	57 (30, 60)	31 (29, 56)	57 (35, 60)
			<i>p</i> = 0.0499 vs placebo	<i>p</i> < 0.0001 vs placebo	
	Trunk	N = 51	N = 140	N = 134	N = 145
		85 (57, 114)	32 (29, 57)	29 (29, 30)	32 (29, 57)
			<i>p</i> = 0.0012 vs placebo	<i>p</i> < 0.0001 vs placebo	
	Upper limbs	N = 37	N = 126	N = 128	N = 128
		NE (85, NE)	57 (30, 58)	29 (29, 32)	57 (55, 60)
			<i>p</i> < 0.0001 vs placebo	<i>p</i> < 0.0001 vs placebo	
	Lower limbs	N = 46	N = 143	N = 132	N = 141
		87 (57, NE)	31 (30, 57)	30 (29, 35)	57 (34, 59)
			<i>p</i> = 0.0002 vs placebo	<i>p</i> < 0.0001 vs placebo	
Asian	Head and neck	N = 14	N = 35	N = 42	N = 33
		115 (114, NE)	56 (29, 59)	29 (15, 29)	61 (55, 86)
			<i>p</i> = 0.0038 vs placebo	<i>p</i> < 0.0001 vs placebo	
	Trunk	N = 13	N = 37	N = 47	N = 37
		116 (113, NE)	34 (28, 57)	29 (16, 30)	56 (29, 60)
			<i>p</i> = 0.0002	<i>p</i> < 0.0001	

			vs placebo	vs placebo	
Upper limbs	N = 11	N = 33	N = 48	N = 36	
	116 (114, NE)	30 (29, 57)	29 (27, 30)	57 (29, 60)	
		$p = 0.0005$ vs placebo	$p < 0.0001$ vs placebo		
Lower limbs	N = 13	N = 39	N = 49	N = 35	
	116 (113, NE)	29 (15, 32)	29 (16, 30)	57 (31, 85)	
		vs placebo	vs placebo		
		$p < 0.0001$	$p < 0.0001$		

CI Confidence interval, EASI Eczema Area and Severity Index, EASI-75 $\geq 75\%$ improvement in EASI from baseline, NE not evaluable as too few events were observed, Q2W every 2 weeks, QD once daily

Comparisons were not multiplicity controlled

N represents the number of EASI-75 responders in each analysis

Table S5. Kaplan-Meier median time to EASI-90 by body region among White and Asian individuals

		Placebo	Abrocitinib 100 mg QD	Abrocitinib 200 mg QD	Dupilumab 300 mg Q2W
Median time to EASI-90 in days (95% CI)					
White	Head and neck	N = 39	N = 102	N = 103	N = 97
		114 (89, NE)	87 (84, 114)	57 (57, 84)	92 (83, 114)
			$p = 0.1113$	$p = 0.0018$	
	Trunk	N = 38	N = 113	N = 117	N = 112
		114 (85, NE)	85 (60, 113)	57 (32, 58)	85 (57, 92)
			$p = 0.0166$	$p < 0.0001$	
	Upper limbs	N = 21	N = 87	N = 108	N = 81
		117 (117, 119)	114 (85, NE)	58 (57, 84)	114 (112, NE)
			$p = 0.0004$	$p < 0.0001$	
	Lower limbs	N = 25	N = 109	N = 107	N = 90
		NE (115, NE)	84 (58, 113)	58 (57, 83)	113 (87, 115)
			$p < 0.0001$	$p < 0.0001$	
Asian	Head and neck	N = 7	N = 20	N = 28	N = 22
		NE (114, NE)	NE (85, NE)	88 (31, NE)	115 (85, NE)
			$p = 0.0502$	$p = 0.0036$	
	Trunk	N = 5	N = 28	N = 37	N = 25
		NE (NE, NE)	86 (57, NE)	57 (30, 86)	113 (66, NE)
			$p < 0.0001$	$p < 0.0001$	
	Upper limbs	N = 5	N = 25	N = 33	N = 25
		117 (117, NE)	85 (57, NE)	86 (57, 113)	113 (85, NE)
			$p = 0.0008$	$p < 0.0001$	
		N = 3	N = 32	N = 41	N = 25

	Lower limbs	NE (NE, NE)	59 (30, 113)	33 (29, 60)	111 (60, NE)
			$p < 0.0001$	$p < 0.0001$	

CI Confidence interval, *EASI* Eczema Area and Severity Index, *EASI-90* $\geq 90\%$ improvement in EASI from baseline, *NE* not evaluable as too few events were observed; *Q2W* every 2 weeks, *QD* once daily

P values are for abrocitinib vs placebo

N represents the number of EASI-90 responders in each analysis

Table S6 Kaplan-Meier median time to EASI-75 and EASI-90 for head and neck score among individuals with high baseline EASI head and neck score

	Placebo	Abrocitinib 100 mg QD	Abrocitinib 200 mg QD	Dupilumab 300 mg Q2W
Median time to EASI-75 in days (95% CI)				
Head and neck	N = 19	N = 42	N = 57	N = 47
	113 (58, 117)	57 (29, 85)	29 (28, 45)	57 (29, 85)
		<i>p</i> = 0.0497	<i>p</i> < 0.0001	
Median time to EASI-90 in days (95% CI)				
Head and neck	N = 11	N = 30	N = 42	N = 36
	NE (113, NE)	119 (65, NE)	57 (32, 109)	113 (85, 115)
		<i>p</i> = 0.0591	<i>p</i> = 0.0005	

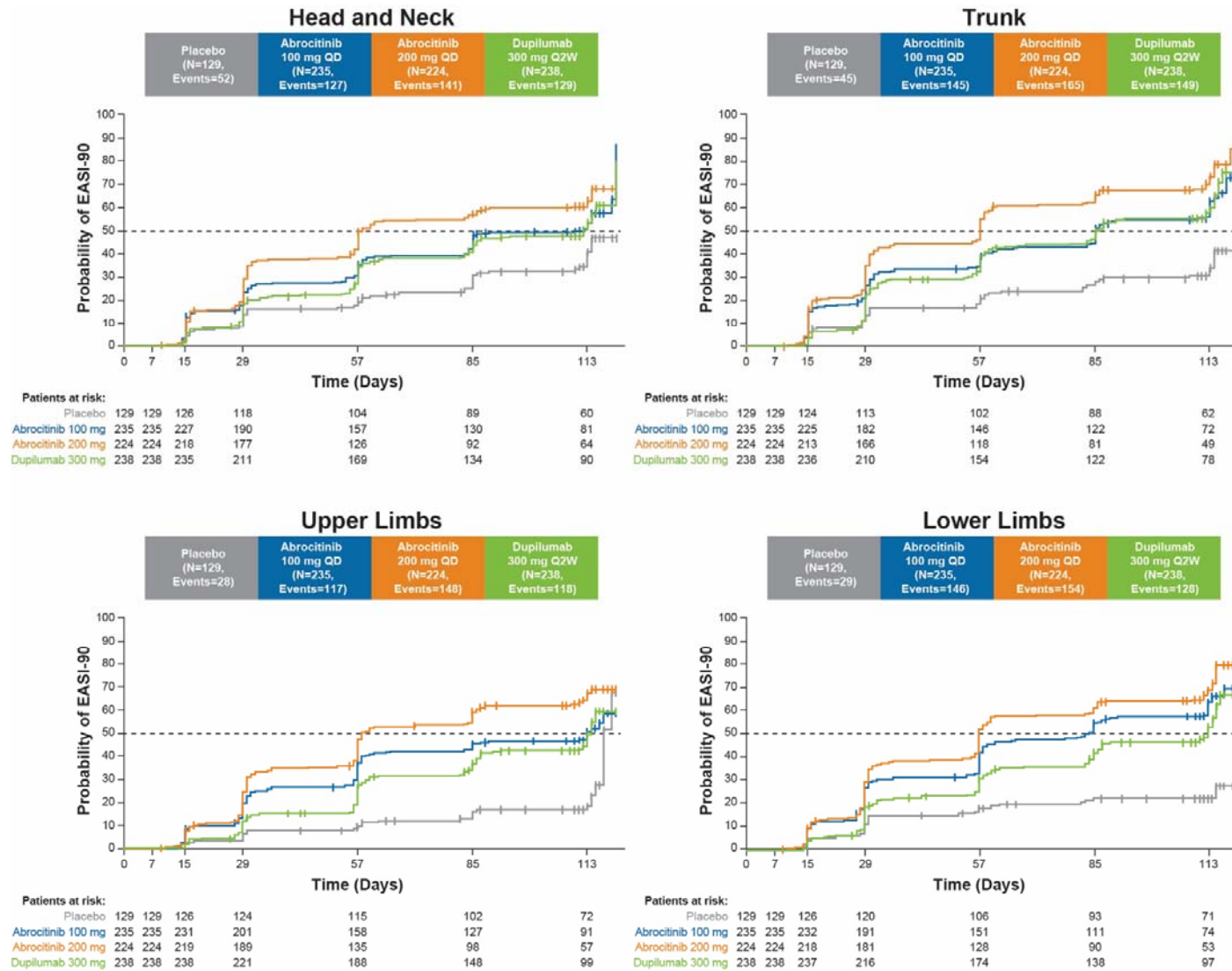
CI Confidence interval, *EASI* Eczema Area and Severity Index, *EASI-75* ≥75% improvement in EASI from baseline, *EASI-90* ≥90% improvement in EASI from baseline; *NE* not evaluable as too few events were observed, *Q2W* every 2 weeks, *QD* once daily

A high head and neck EASI score was defined as ≥4

P values are for abrocitinib vs placebo

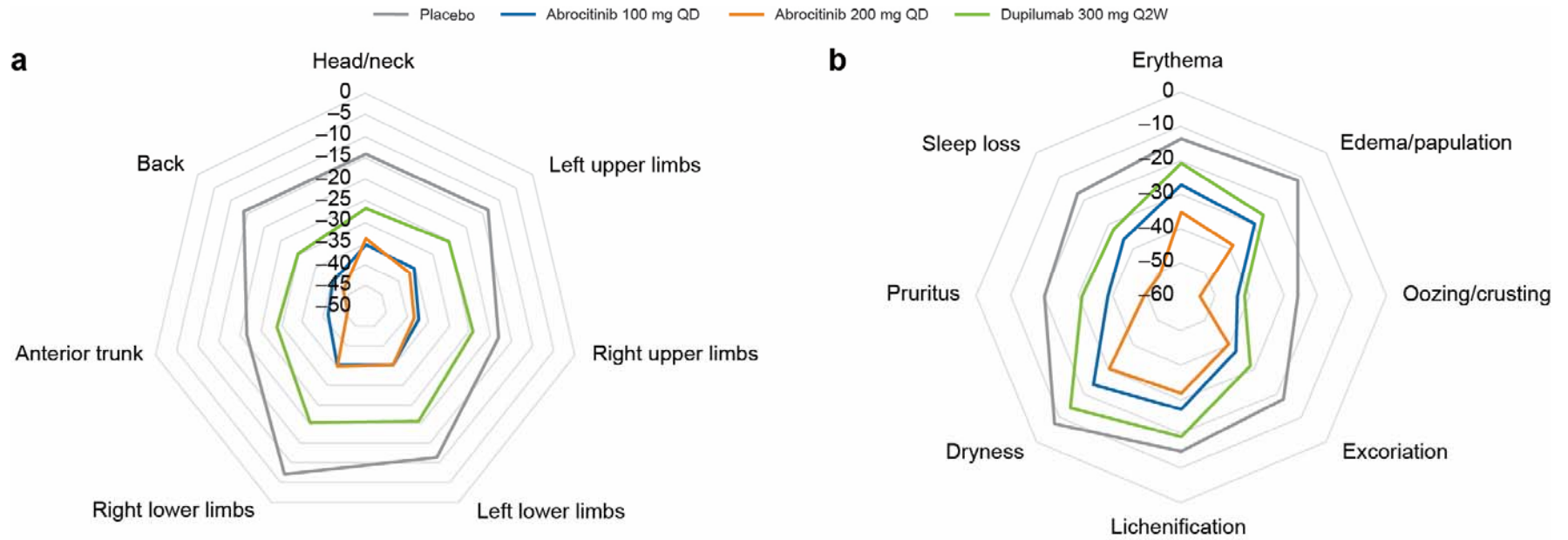
N represents the number of EASI responders in each analysis

Fig. S1. Kaplan-Meier curve of time to first achieve $\geq 90\%$ improvement from baseline in EASI body region score



CI confidence interval, EASI Eczema Area and Severity Index, Q2W every 2 weeks, QD once daily

Fig. S2. Least squares mean percentage change from baseline in SCORAD (a) extent and (b) intensity at week 2.



Q2W every 2 weeks, QD once daily, SCORAD SCORing Atopic Dermatitis