

1 **Supplemental Figure Legends**

2 **Supplemental Figure 1 Loss of LcytB does not reduce cell proliferation or fluid-**

3 **phase endocytosis** – A. WT and *LcytB* mutants #1 and #2 were plated and cell

4 proliferation determined at 24, 48 and 72 hrs. (n=5 biologic replicates). Error bars, SEM.

5 B. WT, *LcytB* mutant #2 and *Steap3* mutant #2 cells were fed 594-dextran (10,000mw)

6 for time, cells placed at 0°C and washed extensively and total cell associated

7 fluorescence determined using flow cytometry. The data are expressed as median 594-

8 Dextran fluorescence intensity per 10,000 cells. (n=5 biologic replicates). Error bars,

9 SEM. C. C57BL6 bone marrow-derived macrophages were incubated with siRNA

10 reagents as described in Materials and Methods, RNA isolated for RT-qPCR or cells

11 lysed and ferritin levels determined. Error bars, SEM (n=6).

12

13 **Supplemental Figure 2 Loss of Steap3 increases cell proliferation - WT and Steap3**

14 mutants (#2 and #13) were plated and cell proliferation determined at 24, 48 and 72 hrs.

15 (n=5 biologic replicates). Error bars (SEM) (n = 6). ***, p < 0.001, ****, p < 0.0001.

16

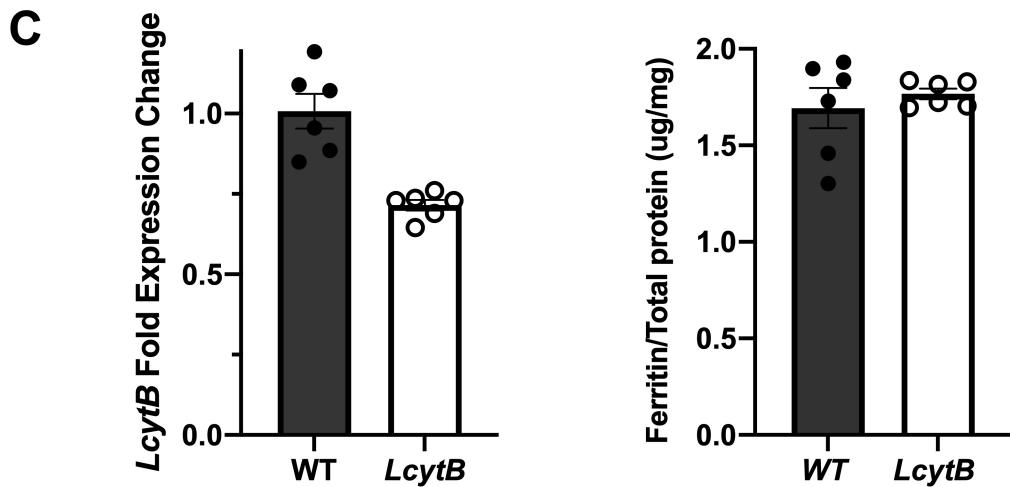
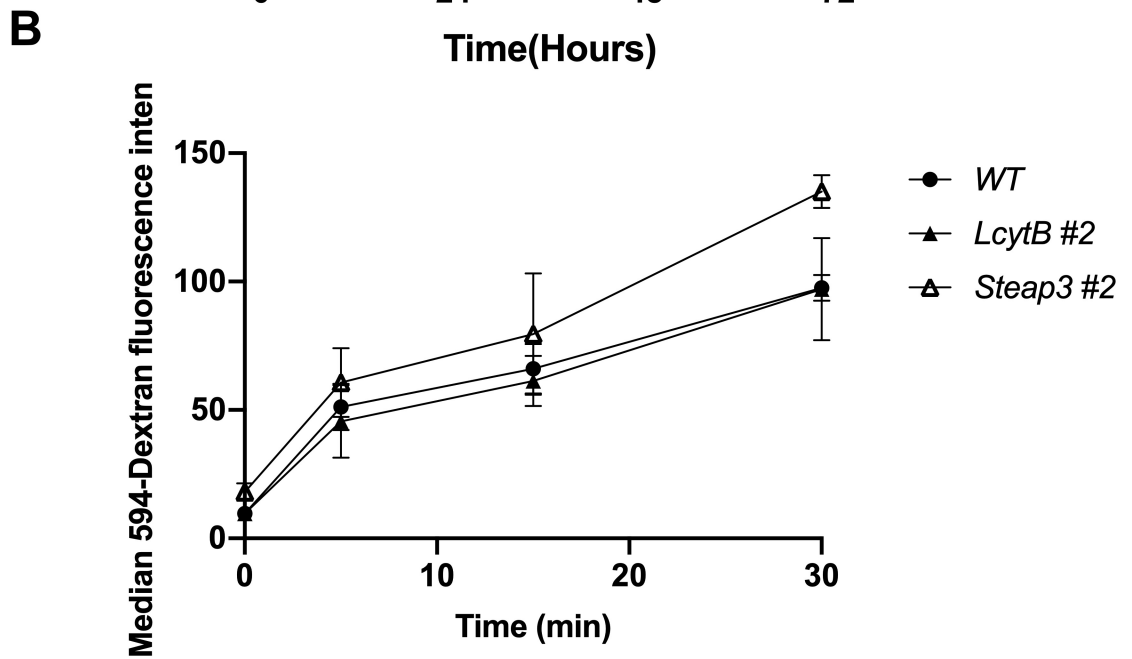
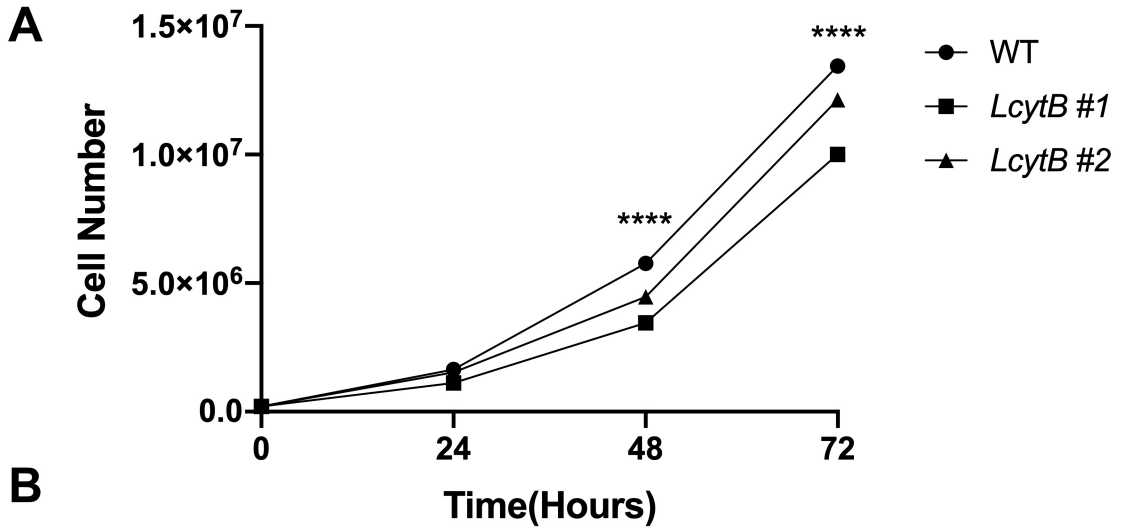
17 **Supplemental Figure 3 Loss of both LcytB and Steap3 reduces cell proliferation -**

18 WT and *DKD* mutant #2 were plated and cell proliferation determined at 24, 48 and 72

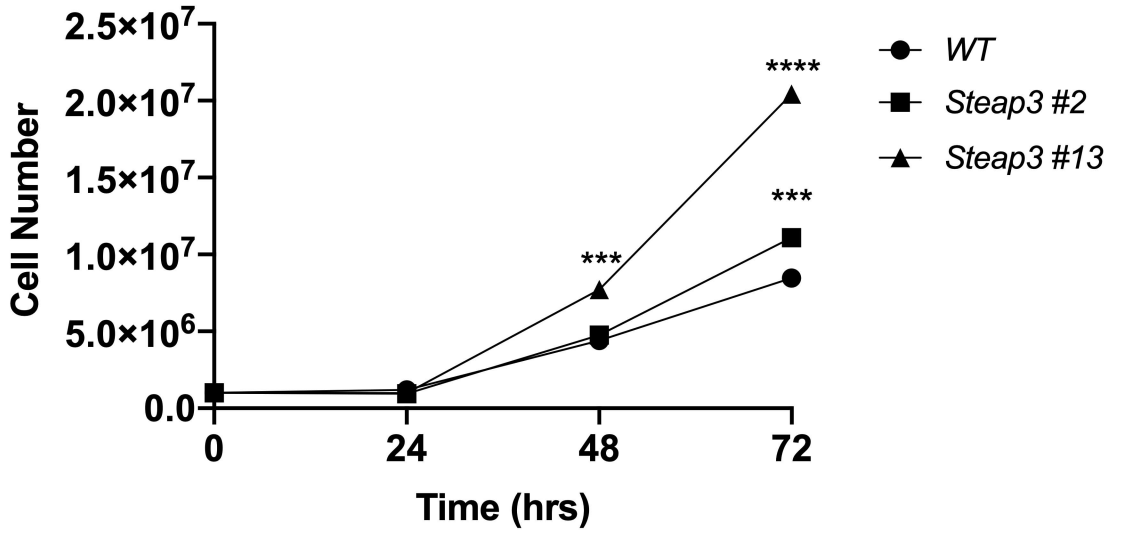
19 hrs. (n=5 biologic replicates). Error bars (SEM) (n = 6). ***, p < 0.001, ****, p < 0.0001.

20

Supplemental Figure 1



Supplemental Figure 2



Supplemental Figure 3

