

**Supplementary Table 1: Dynamic prediction using the multistate based on a Cox model including age and ELN risk group.**

Predicted probabilities are given for patients with 65 years of age (median of the cohort) and intermediate (A and B) or unfavorable (C and D) ELN risk. State-associated predicted probability represents the probability for being in that specific state at the prediction time given that the patient is in the No-Allo-CR (i.e. event free and not transplanted, A and C) or Allo-CR (i.e. event free after transplantation, B and D) state at the landmark time.

**A) ELN Intermediate / No Allo - CR**

landmark time in month post CR1	prediction time in year post CR1	No Allo - CR	Allo - CR	No Allo - Relapse	No Allo - NRM	Allo - relapse	Allo - NRM
0	2	17%	26%	42%	4%	7%	5%
0	3	12%	23%	46%	5%	8%	6%
0	4	9%	22%	48%	6%	9%	6%
0	5	8%	21%	49%	6%	10%	6%
3	2	21%	21%	44%	3%	6%	4%
3	3	15%	19%	50%	4%	7%	5%
3	4	12%	18%	52%	5%	8%	5%
3	5	10%	18%	54%	6%	8%	5%
6	2	36%	5%	54%	4%	1%	1%
6	3	25%	4%	63%	6%	1%	1%
6	4	20%	4%	67%	8%	1%	1%
6	5	16%	4%	69%	8%	1%	1%
9	2	45%	2%	49%	4%	0%	0%
9	3	31%	2%	61%	6%	0%	0%
9	4	25%	2%	65%	8%	0%	0%
9	5	20%	2%	69%	9%	0%	0%
12	2	53%	1%	43%	3%	0%	0%
12	3	37%	1%	57%	6%	0%	0%
12	4	29%	1%	62%	8%	0%	0%
12	5	24%	1%	66%	9%	0%	0%

**B) ELN Intermediate / Allo - CR**

landmark time in month post CR1	prediction time in year post CR1	No Allo - CR	Allo - CR	No Allo - Relapse	No Allo - NRM	Allo - relapse	Allo - NRM
0	2	NA	NA	NA	NA	NA	NA
0	3	NA	NA	NA	NA	NA	NA
0	4	NA	NA	NA	NA	NA	NA
0	5	NA	NA	NA	NA	NA	NA
3	2	0%	66%	0%	0%	19%	15%
3	3	0%	60%	0%	0%	23%	17%
3	4	0%	56%	0%	0%	26%	18%
3	5	0%	56%	0%	0%	26%	18%
6	2	0%	73%	0%	0%	16%	11%
6	3	0%	66%	0%	0%	20%	14%
6	4	0%	62%	0%	0%	23%	15%
6	5	0%	62%	0%	0%	24%	15%
9	2	0%	80%	0%	0%	12%	8%
9	3	0%	72%	0%	0%	16%	11%
9	4	0%	68%	0%	0%	20%	12%
9	5	0%	67%	0%	0%	21%	12%
12	2	0%	86%	0%	0%	10%	4%
12	3	0%	78%	0%	0%	14%	8%
12	4	0%	73%	0%	0%	18%	9%
12	5	0%	72%	0%	0%	19%	9%

**C) ELN Unfavorable / No Allo - CR**

landmark time in month post CR1	prediction time in year post CR1	No Allo - CR	Allo - CR	No Allo - Relapse	No Allo - NRM	Allo - relapse	Allo - NRM
0	2	5%	26%	41%	5%	13%	10%
0	3	3%	22%	43%	5%	16%	12%
0	4	2%	20%	44%	5%	17%	12%
0	5	1%	19%	44%	5%	18%	12%
3	2	8%	23%	46%	3%	12%	8%
3	3	4%	20%	49%	4%	14%	10%
3	4	3%	18%	49%	4%	15%	10%
3	5	2%	17%	50%	5%	15%	10%
6	2	18%	6%	67%	5%	2%	1%
6	3	10%	5%	74%	7%	2%	2%
6	4	7%	5%	76%	8%	3%	2%
6	5	5%	5%	78%	8%	3%	2%
9	2	26%	3%	65%	5%	1%	0%
9	3	14%	2%	75%	7%	1%	0%
9	4	10%	2%	79%	8%	1%	1%
9	5	7%	2%	81%	9%	1%	1%
12	2	35%	1%	60%	4%	0%	0%
12	3	19%	1%	73%	7%	0%	0%
12	4	13%	1%	78%	9%	0%	0%
12	5	9%	1%	81%	9%	0%	0%

**D) ELN Unfavorable / Allo - CR**

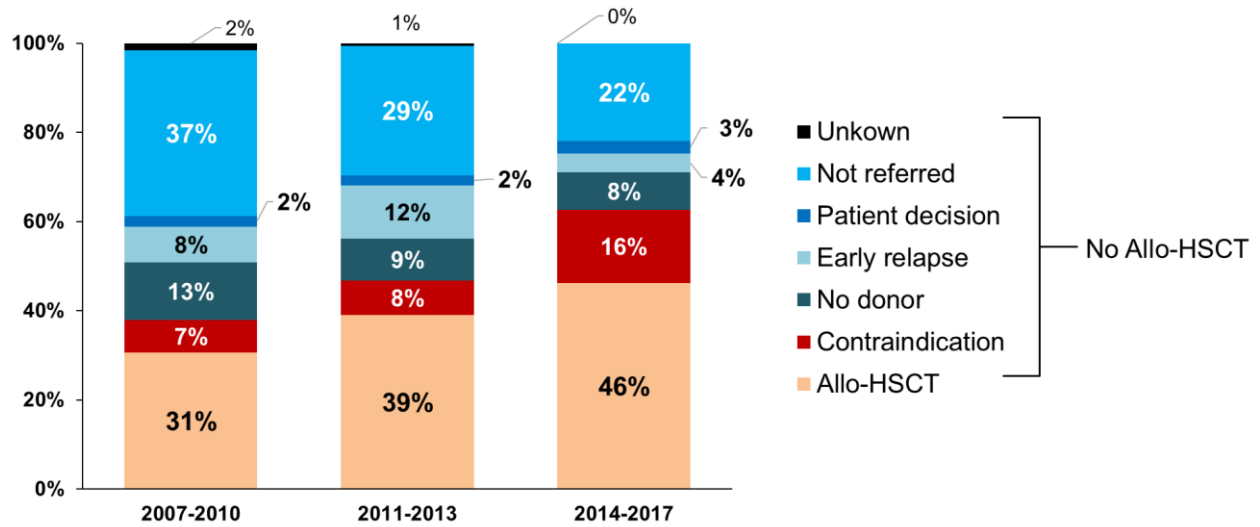
landmark time in month post CR1	prediction time in year post CR1	No Allo - CR	Allo - CR	No Allo - Relapse	No Allo - NRM	Allo - relapse	Allo - NRM
0	2	NA	NA	NA	NA	NA	NA
0	3	NA	NA	NA	NA	NA	NA
0	4	NA	NA	NA	NA	NA	NA
0	5	NA	NA	NA	NA	NA	NA
3	2	0%	50%	0%	0%	28%	22%
3	3	0%	42%	0%	0%	32%	25%
3	4	0%	38%	0%	0%	36%	26%
3	5	0%	38%	0%	0%	36%	26%
6	2	0%	60%	0%	0%	24%	16%
6	3	0%	50%	0%	0%	29%	21%
6	4	0%	46%	0%	0%	33%	21%
6	5	0%	45%	0%	0%	34%	21%
9	2	0%	69%	0%	0%	19%	12%
9	3	0%	58%	0%	0%	25%	17%
9	4	0%	53%	0%	0%	29%	18%
9	5	0%	51%	0%	0%	30%	18%
12	2	0%	78%	0%	0%	15%	7%
12	3	0%	66%	0%	0%	22%	12%
12	4	0%	60%	0%	0%	27%	13%
12	5	0%	58%	0%	0%	28%	13%

**Supplementary table 2: Multivariate Cox model from the dynamic super landmark model**

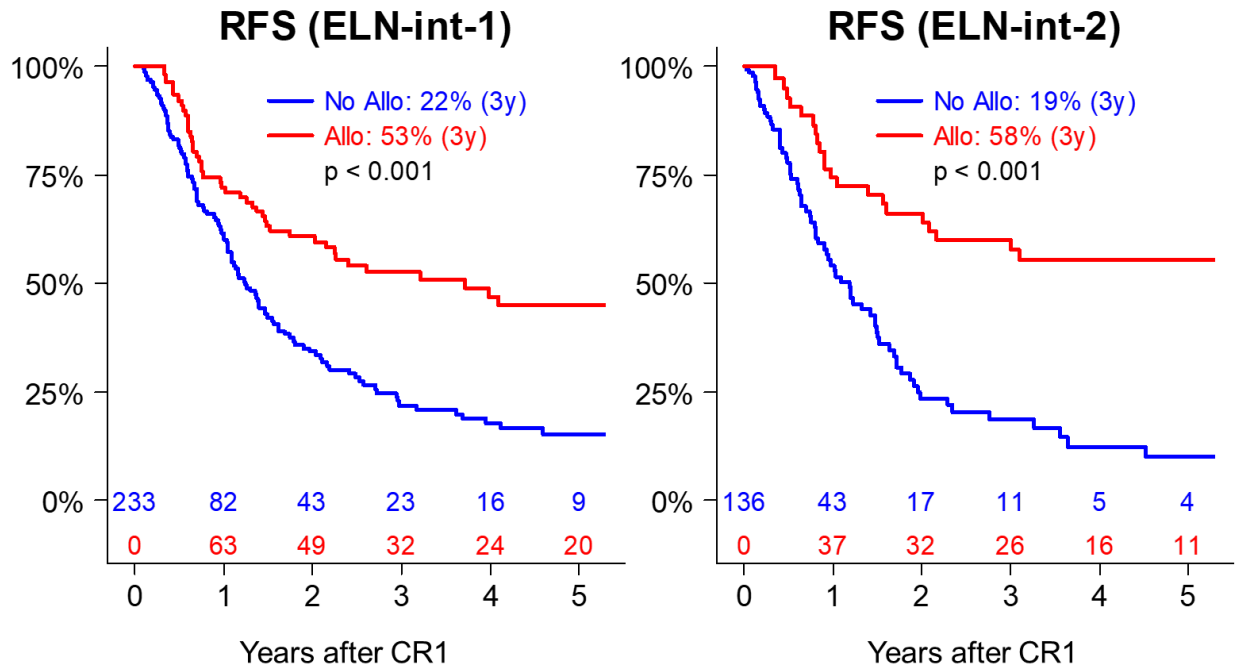
	Relapse			Non-Relapse Mortality		
	HR <sup>\$</sup>	95%CI	p	HR <sup>\$</sup>	95%CI	p
<b>Allo-HSCT*</b>						
no	1					
yes	0.29	(0.21 - 0.41)	<0.001	2.36	(1.26 - 4.45)	0.008
<b>Age</b>	1.04	(1.00 - 1.08)	0.068	1.00	(0.92 - 1.09)	0.928
<b>ELN risk</b>						
Intermediate	1			1		
Unfavorable	1.69	(1.26 - 2.25)	<0.001	1.05	(0.61 - 1.79)	0.861
<b>N induction courses</b>						
one	1			1		
two	1.38	(0.88 - 2.16)	0.166	0.30	(0.07 - 1.32)	0.111
<b>Treatment period</b>						
2007-10	1			1		
2011-13	1.05	(0.78 - 1.42)	0.746	0.67	(0.34 - 1.33)	0.251
2014-17	0.88	(0.65 - 1.19)	0.408	1.09	(0.59 - 2.00)	0.788
	Relapse-Free Survival			Overall Survival		
	HR	95%CI	p	HR	95%CI	p
<b>Allo-HSCT*</b>						
no						
yes	0.47	(0.36 - 0.62)	<0.001	0.54	(0.40 - 0.72)	<0.001
<b>Age</b>	1.03	(1.00 - 1.07)	0.082	1.04	(1.00 - 1.08)	0.073
<b>ELN risk</b>						
Intermediate	1			1		
Unfavorable	1.54	(1.19 - 1.98)	0.001	1.64	(1.24 - 2.16)	<0.001
<b>N induction courses</b>						
one	1			1		
two	1.06	(0.68 - 1.66)	0.784	1.12	(0.71 - 1.77)	0.629
<b>Treatment period</b>						
2007-10	1			1		
2011-13	0.98	(0.75 - 1.28)	0.877	1.00	(0.75 - 1.34)	0.995
2014-17	0.93	(0.72 - 1.22)	0.609	0.98	(0.73 - 1.30)	0.875

<sup>\$</sup>Cause specific HR. \*Allo-HSCT was considered as categorical covariate (yes or no) according to transplantation status at each landmark time

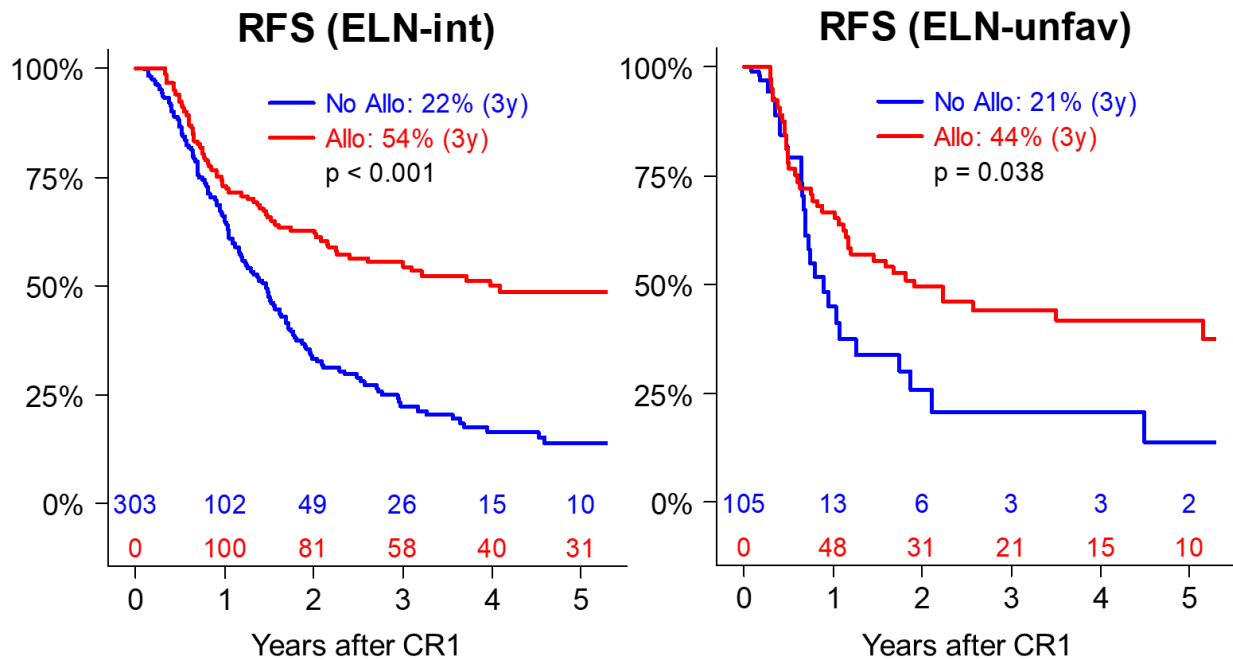
**Supplementary Figure 1: Transplantation rates and causes of not proceeding to Allo-HSCT over years**



**Supplementary Figure 2: Impact of Allo-HSCT on RFS in intermediate-1 (left panel) and intermediate-2 (right panel) ELN risk group**

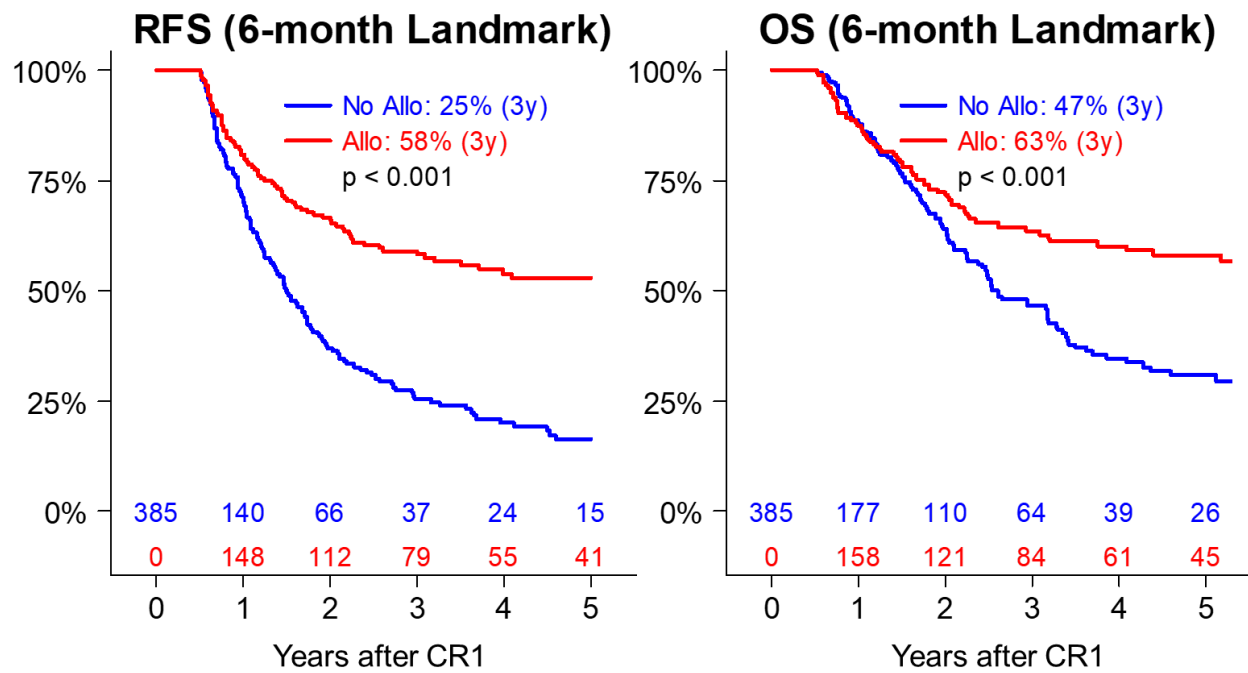


**Supplementary Figure 3: Impact of Allo-HSCT on RFS in ELN intermediate (left panel) and unfavorable (right panel) risk subgroups, after exclusion of patients who did not undergo Allo-HSCT because of contraindication or early AML relapse.**



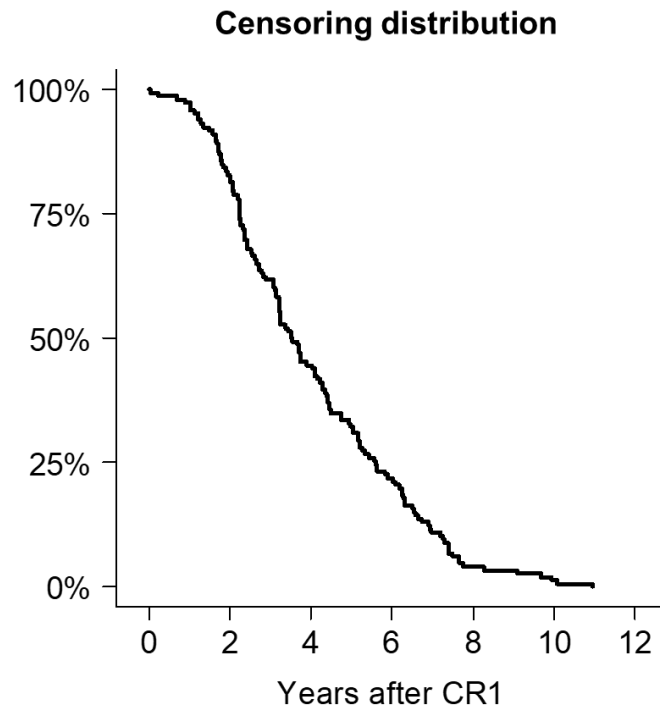


**Supplementary Figure 4: Simon Makuch plots of RFS (left panel) and OS (right panel) considering Allo-HSCT as time dependent variable in a 6-month landmark analysis.**



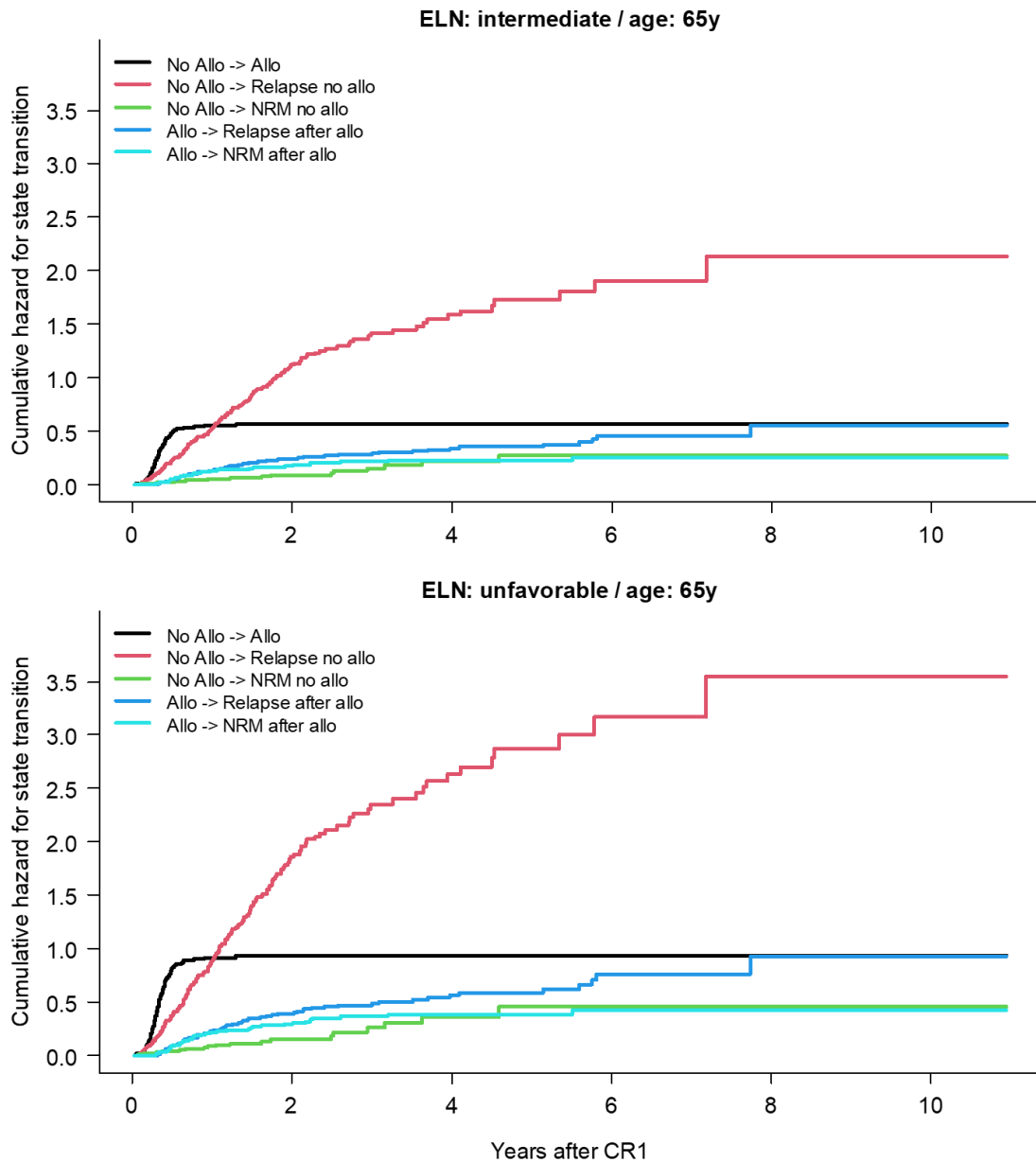
### Supplementary Figure 5: Censoring distribution.

Plotted as a reverse Kaplan-Meier curve for patients with no event for RFS at last contact.



### Supplementary Figure 6: Cumulative hazard for state transition of the multistate model.

Predictions are given for a patient of 65 years of age and intermediate (upper panel) or unfavorable (lower panel) ELN risk AML.



## Supplementary Figure 7: Dynamic landmarking.

Distribution of current values of the “Allo” variable (red: Allo=yes; blue: Allo=no) among patients at risk of event for RFS at each landmark time (every month from CR1 up to 5 years).

