

(kDa)

200

150

100

75

50

37

Page 1:

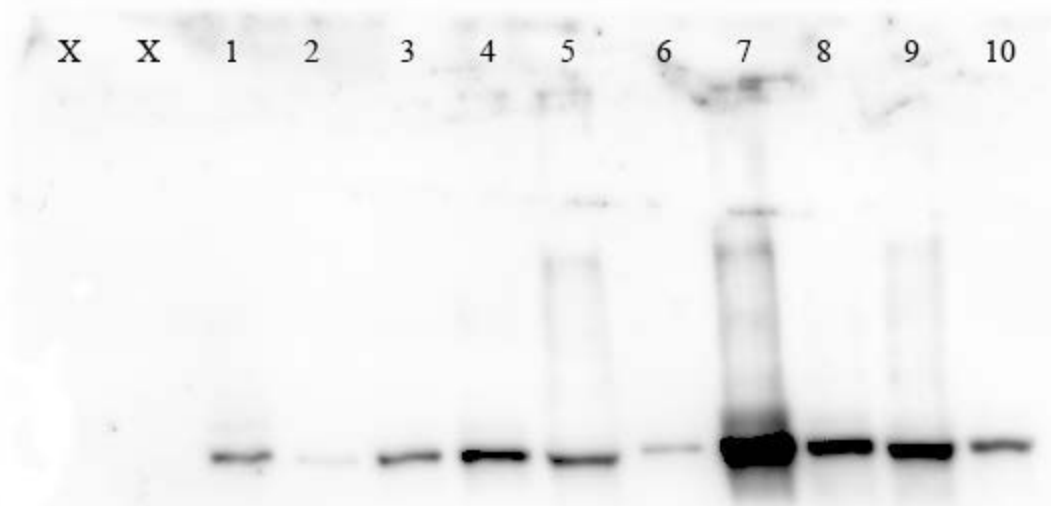
marker

This image was taken by ChemiDoc XRS Plus under the colorimetric condition.

25

20

Figure 1 was created using the western blotting results from page 1 and page 2.



Page 2:

All samples are saliva of healthy humans.

This image was taken under the Chemi (Chemiluminescence) condition of the ChemiDoc XRS Plus.

Figure 1 was created using the western blotting results from page 1 and page 2.



(kDa)

75

50

37

Page 3:

This sample is saliva from a single healthy human.

This image was taken with the iPhone Xs Max in still image mode. Figure 2A was created using the two-dimensional electrophoresis post-silver staining result on page 3.

(kDa)

250

150

100

75

50

37

25

20

15

10

Page 4:
marker

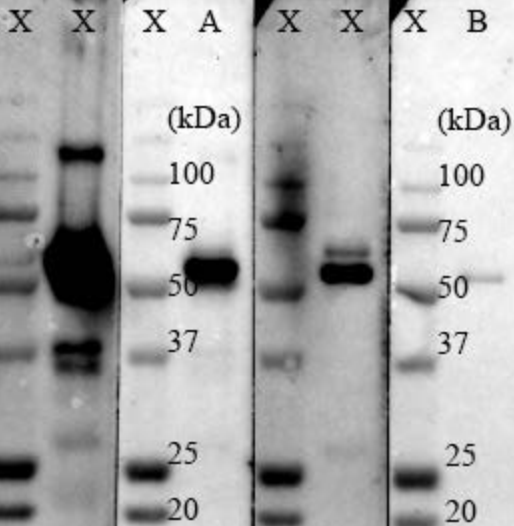
This image was taken by ChemiDoc XRS Plus under the colorimetric condition.
Figure 2B was created using the western blotting results from Page 4 and Page 5.

Page 5:

This sample is saliva from a single healthy human.

This image was taken under the Chemi (Chemiluminescence) condition of ChemiDoc XRS Plus.

Figure 2B was created using the western blotting results from Page 4 and Page 5.



Page 6:

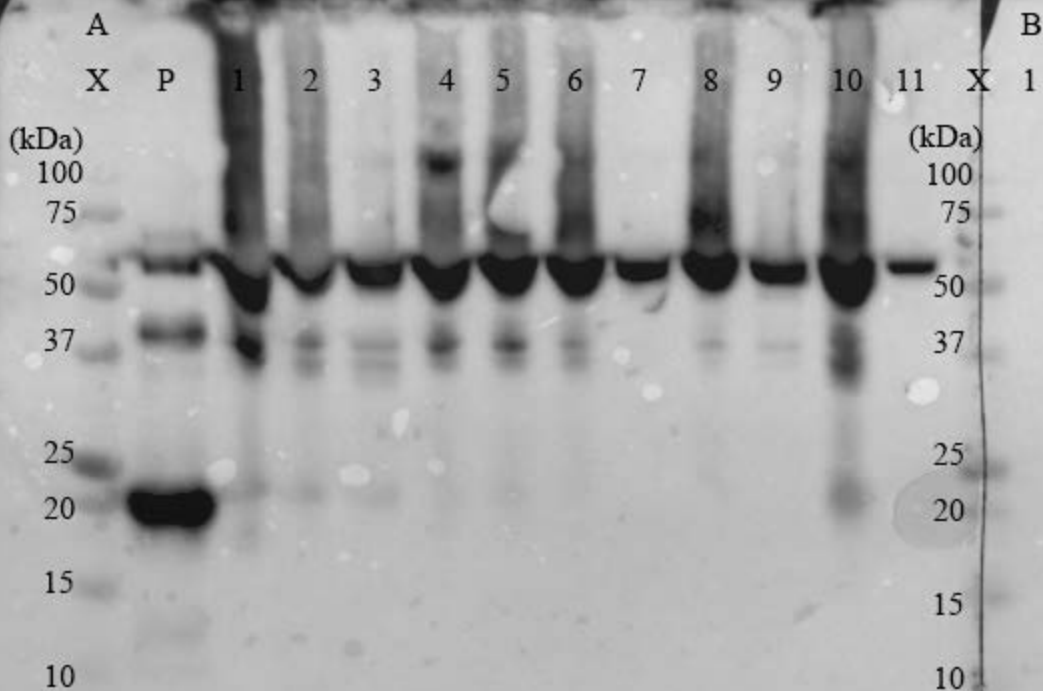
Immunoprecipitation (IP)-western blotting (WB). IP: anti-cytokeratin (CK)13 antibody;

WB: anti-cytokeratin (CK)13 antibody; A: immunostaining with

anti-CK13 antibody, B: immunostaining with anti-modified citrulline (AMC) antibody after chemical treatment.

This image was taken under the Chemi (Chemiluminescence) condition of ChemiDoc XRS Plus.

Figure 3 was created using the WB result on page 6.



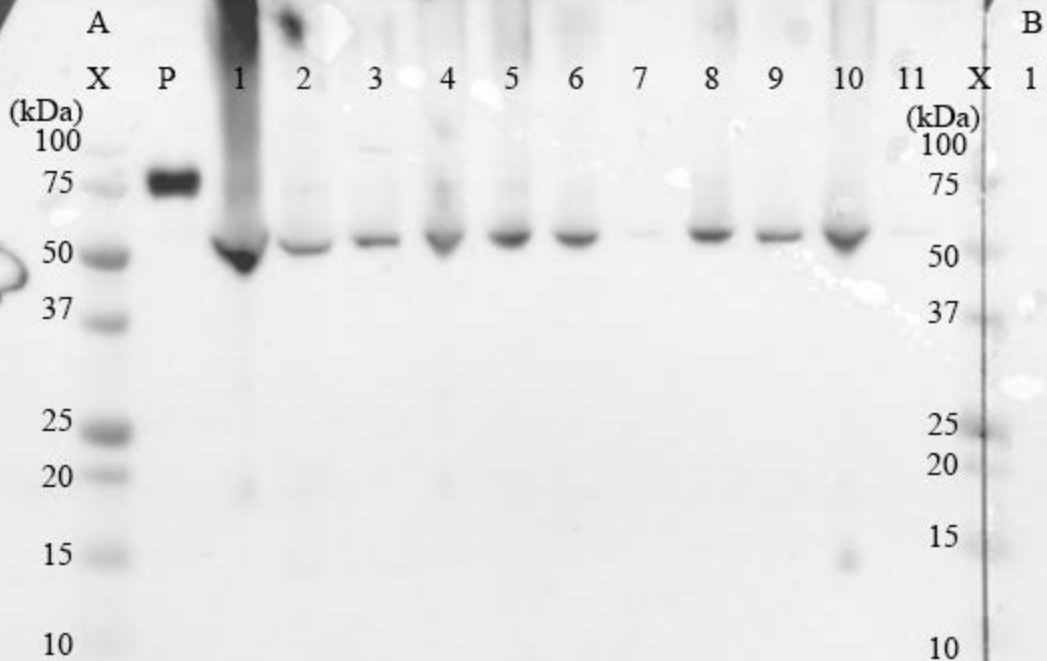
Page7:

(A) P: cytokeratin 13; 1-5: Saliva from patients of rheumatoid arthritis; 6-11: Saliva from healthy individuals; M: marker.

(B) M: marker; 1: Saliva from healthy individuals.

This image was taken under the Chemi (Chemiluminescence) condition of ChemiDoc XRS Plus.

Figure 4 was created using the western blotting result on page 7.



Page 8:

(A) P: citrullinated thrombomodulin; 1-5: Saliva from patients of rheumatoid arthritis; 6-11: Saliva from healthy individuals; M: marker.

(B) M: marker; 1: Saliva from healthy individuals.

This image was taken under the Chemi (Chemiluminescence) condition of ChemiDoc XRS Plus.

Figure 5 was created using the western blotting result on page 8.