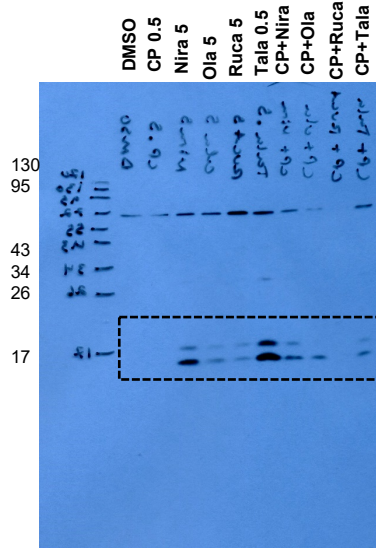


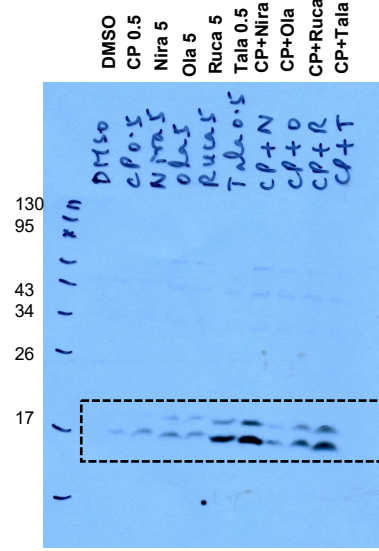
SV-HUC-1

IB: Cleaved Caspase 3



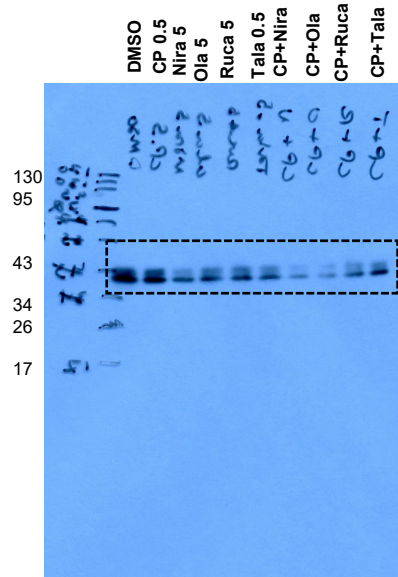
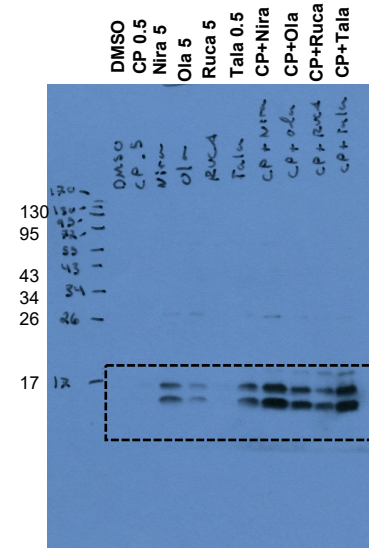
UM-UC-3

IB: Cleaved Caspase 3

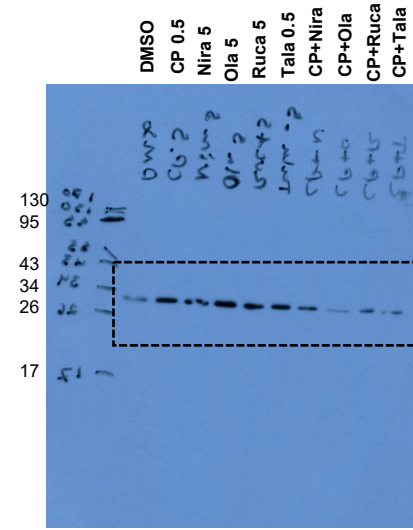
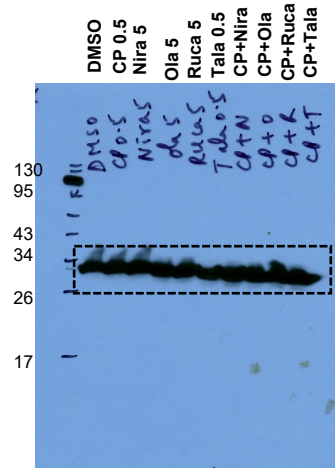


T-24

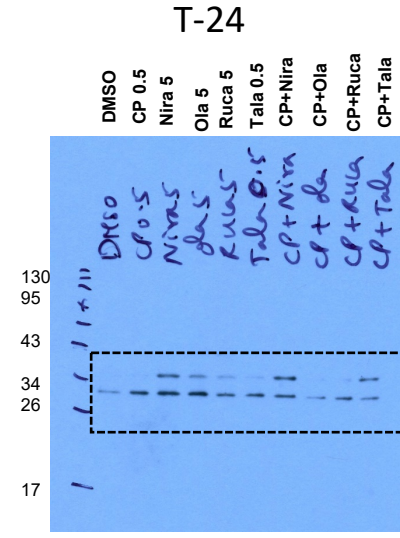
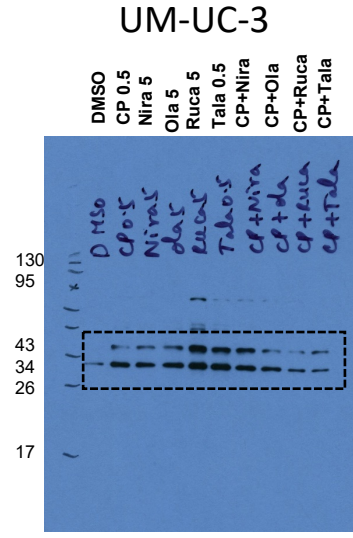
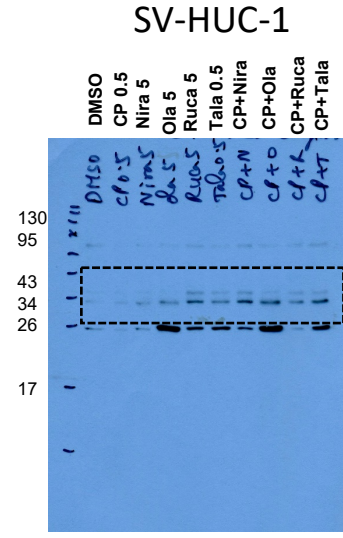
IB: Cleaved Caspase 3



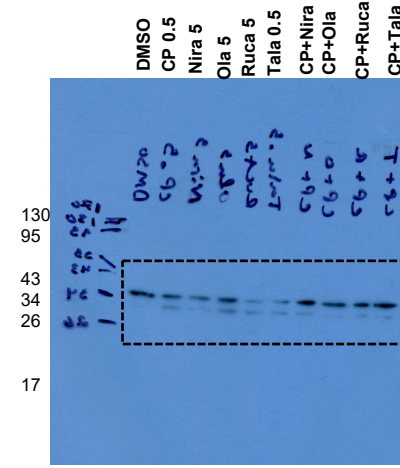
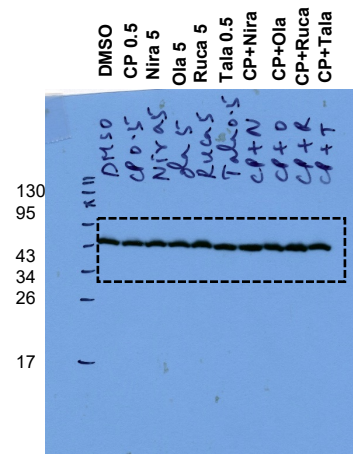
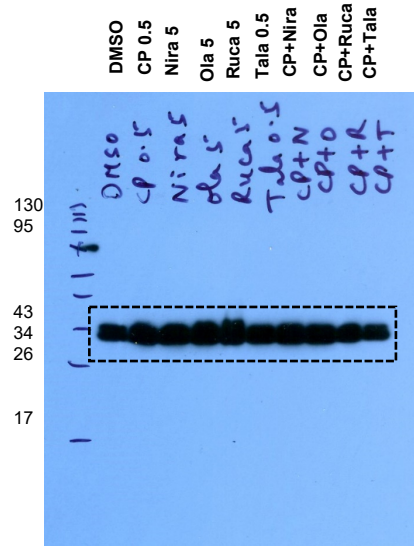
IB: Whole Caspase 3



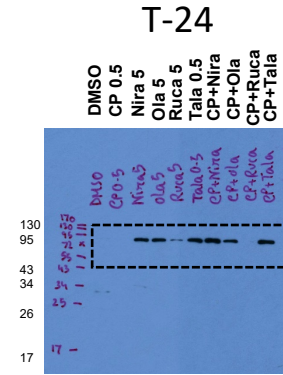
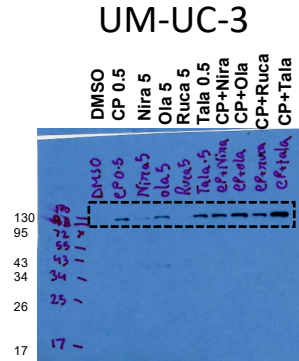
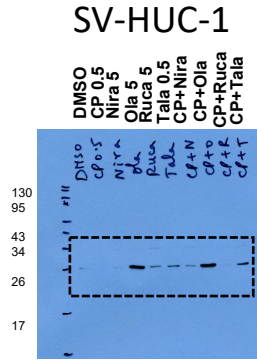
IB: Cleaved Caspase 9



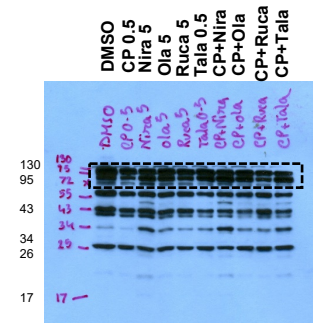
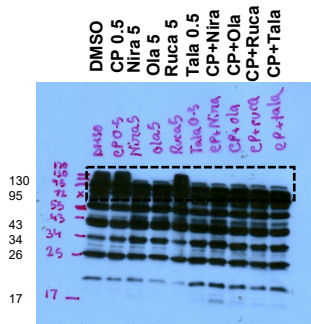
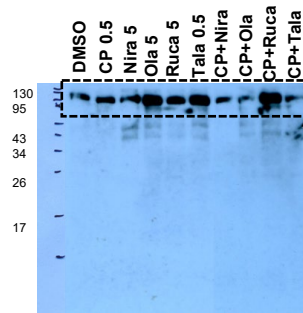
IB: Whole Caspase 9



IB: Cleaved PARP

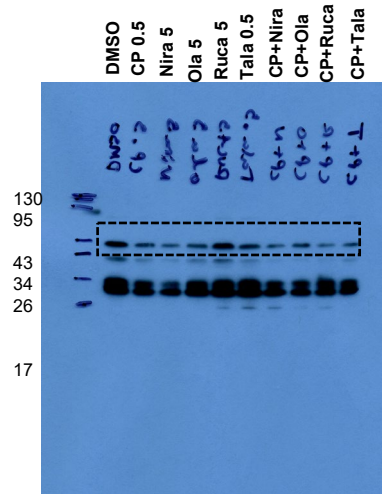


IB: Whole PARP

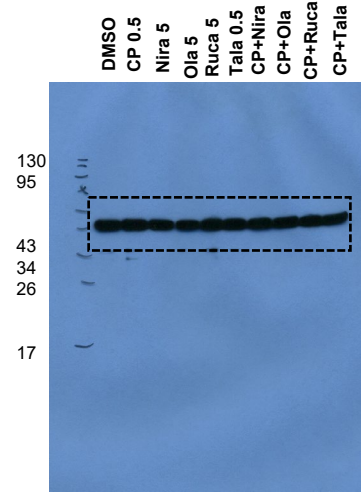


SV-HUC-1

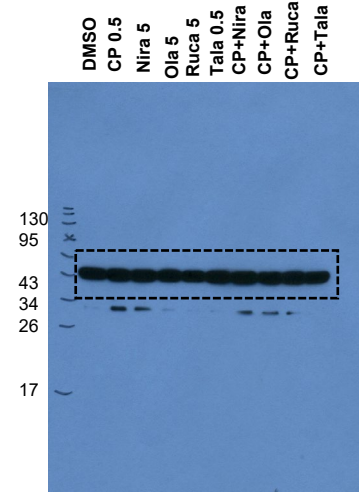
IB: Tubulin



UM-UC-3



T-24



Antibody	Source	Cat#	Clone	Vendor	Dilution used for IHC	Dilution used for Western Blotting	Positive controls for IHC
Whole PARP	Rabbit	9542		Cell Signaling		1:2000	
Whole Caspase 3	Rabbit	14220	D3R6Y	Cell Signaling		1:1000	
Whole Caspase 7	Rabbit	12827	D2Q3L	Cell Signaling		1:1000	
Whole Caspase 9	Mouse	9508	C9	Cell Signaling		1:1000	
Cleaved PARP	Rabbit	5625	D64E10 XP	Cell Signaling		1:2000	
Cleaved Caspase 3	Rabbit	9664	D175 5A1E	Cell Signaling	1:500	1:1000	Prostate cancer cells treated with etoposide
Cleaved Caspase 7	Rabbit	8438	Asp198 D6H1	Cell Signaling	1:500	1:1000	Prostate cancer cells treated with etoposide
Cleaved Caspase 9	Rabbit	52873	Asp330 F5Z7N	Cell Signaling	1:500	1:1000	Prostate cancer cells treated with etoposide
Tubulin	Mouse	T8328	AA2	Sigma		1:10000	
Anti-mouse IgG, HRP-linked	Horse	7076P2		Cell Signaling		1:5000	
Anti-rabbit IgG, HRP-linked	Goat	7074P2		Cell Signaling		1:5000	
Ki-67	Rabbit	MA5-14520	SP6	Neomarkers	1:500		Breast cancer cell xenograft sections