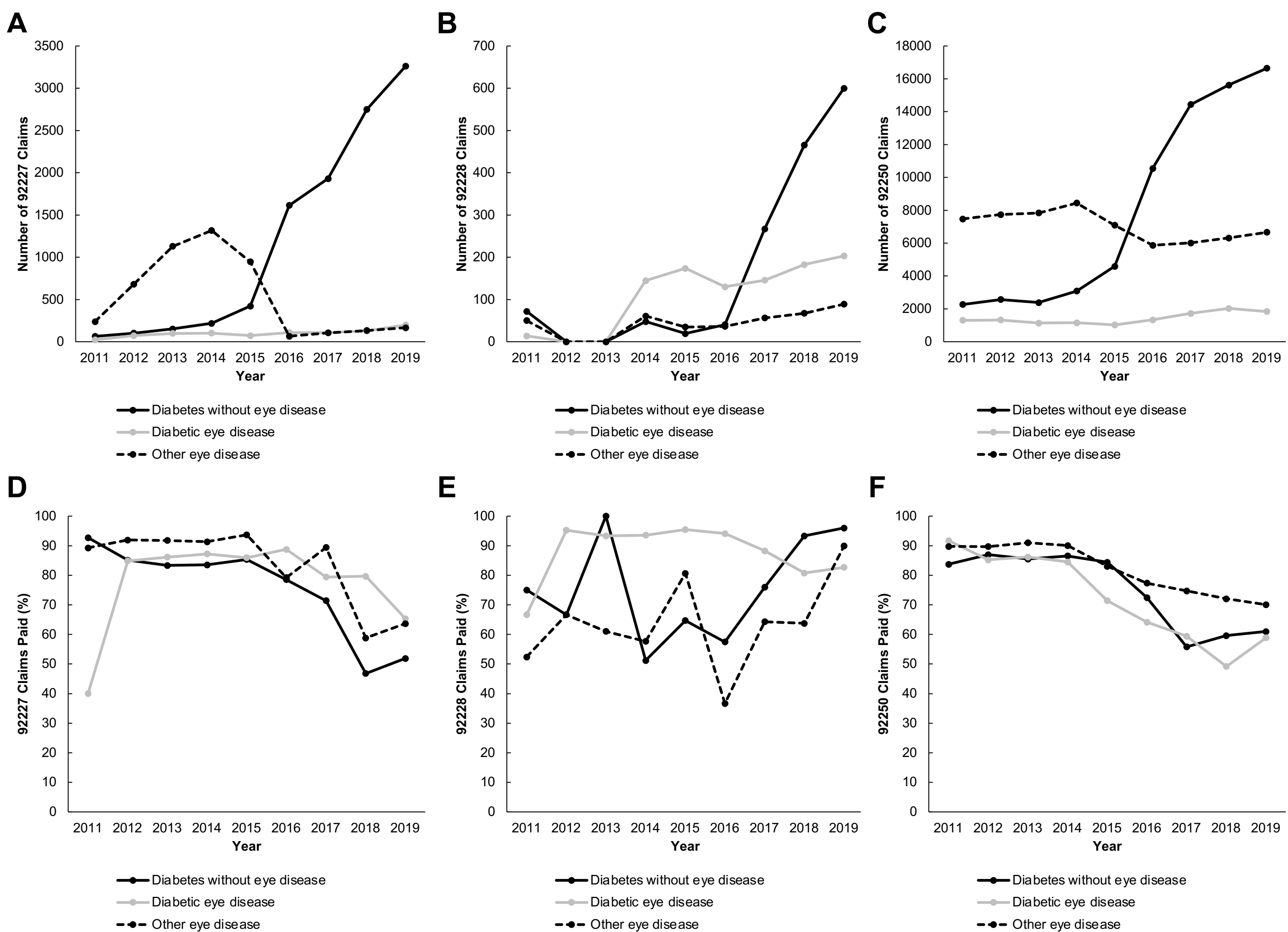


Figure S1. Insurance Claim Payments Over Time.



Line graphs showing remote retinal imaging utilization by year and diagnosis of diabetes mellitus without eye disease, diabetic eye disease, or other non-diabetic eye disease for (A) 92227, (B) 92228, and (C) 92250 CPT codes. Years 2012 and 2013 for (B) were excluded and marked as 0 to comply with OptumLabs Data Policy for omitting data cells with fewer than 11 counts for protection of patient privacy. Line graphs depicting the proportion of approved payments by year and diagnosis for (D) 92227, (E) 92228, and (F) 92250 CPT codes.