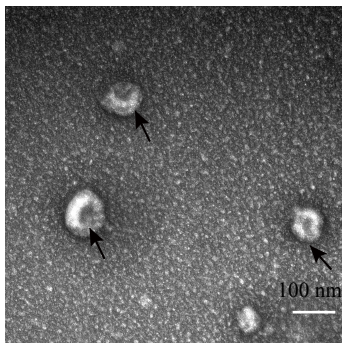


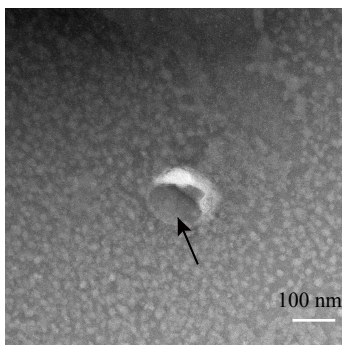
Figure caption: Identification of ADSCs-Exo isolated from conditioned medium of biomaterials-based 3D culture (PG-Exo, PG + ChsMa-Exo, and PG + SerMa-Exo) and 2D culture (2D-Exo). (A) Morphological characterization via transmission electron microscopy. (B) Particle size distribution measured using nanoparticle tracking analysis. Scale bar: 100 nm. PG: porous GelMa, PG + ChsMa: porous GelMa + chondroitin sulfate methacryloyl, PG + SerMa: porous GelMa + sericin methacryloyl.

A

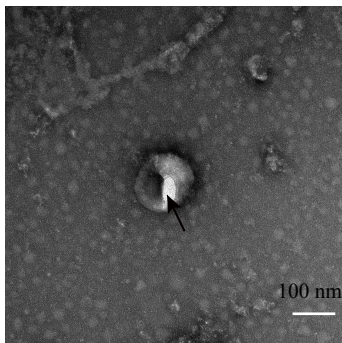
PG-Exo



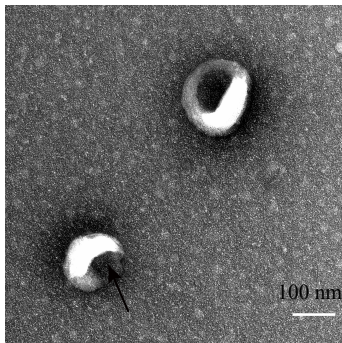
PG + ChsMa-Exo



PG + SerMa-Exo



2D-Exo



B

