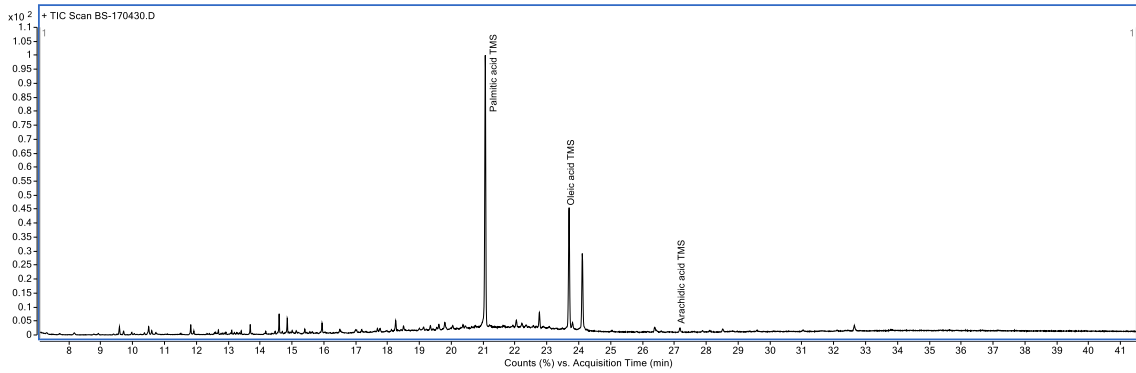
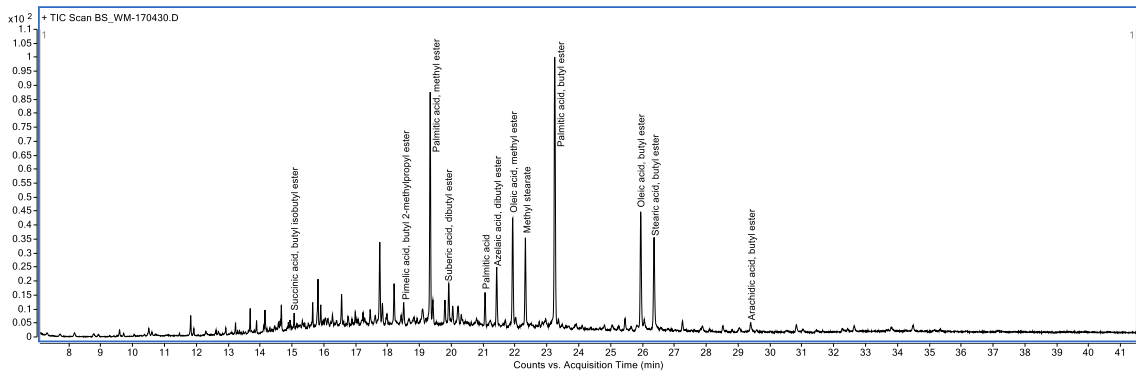


### S4 Fig. GC chromatograms of storage jars found in Building 17049 and included in this study

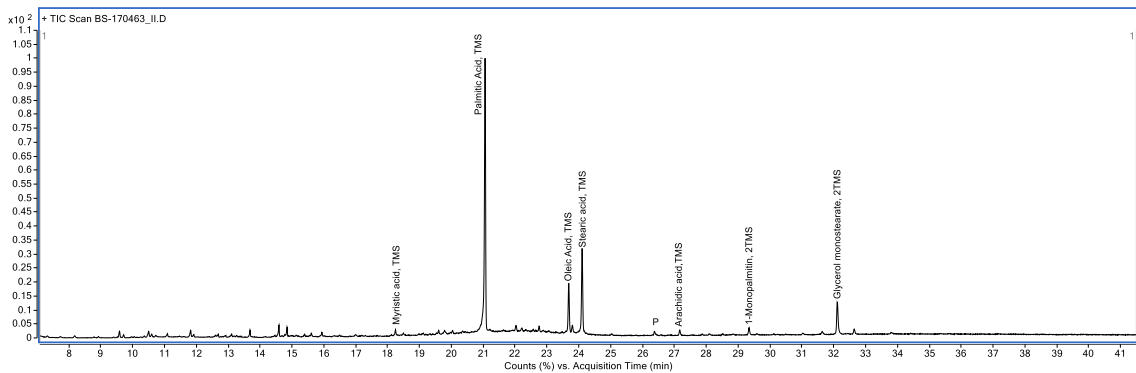
Vessel 170483: sample 170430: TLE



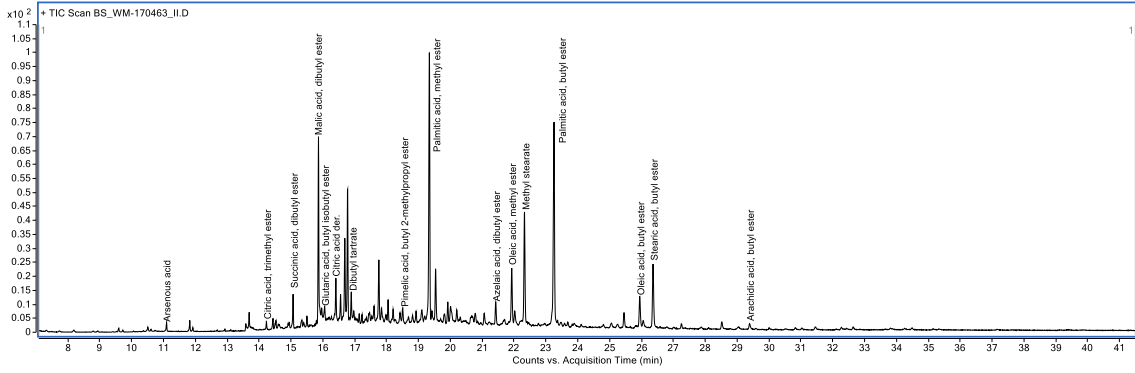
Vessel 170483: sample 170430: WM



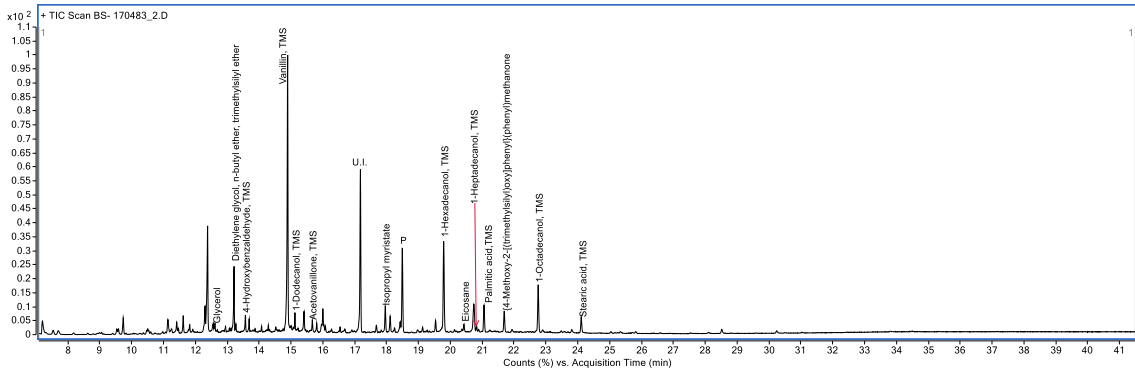
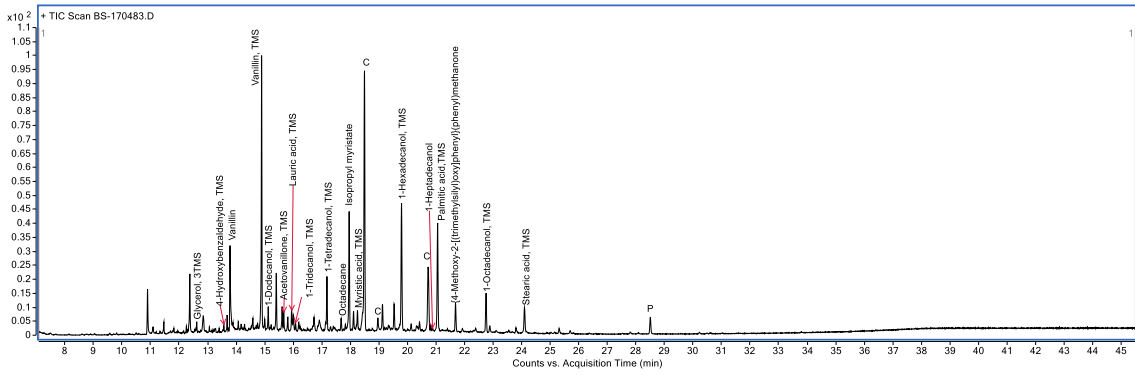
Vessel 170483: sample 170463\_II: TLE



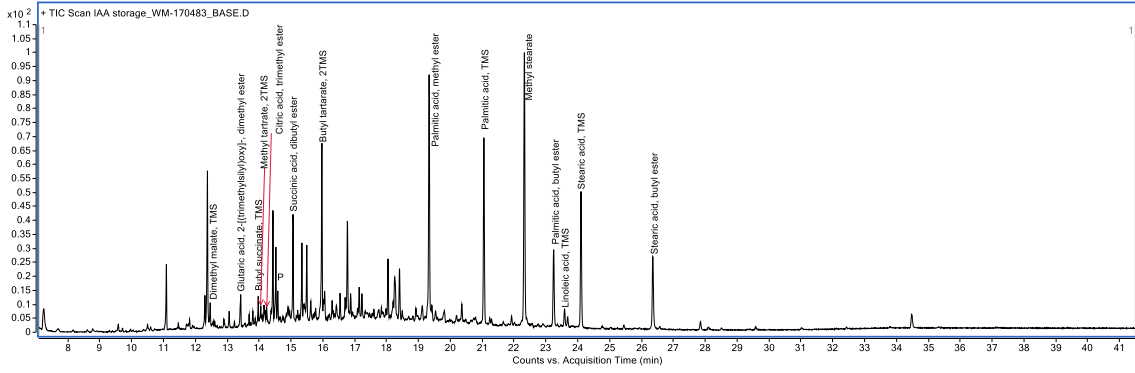
Vessel 170483: sample 170463\_II: WM



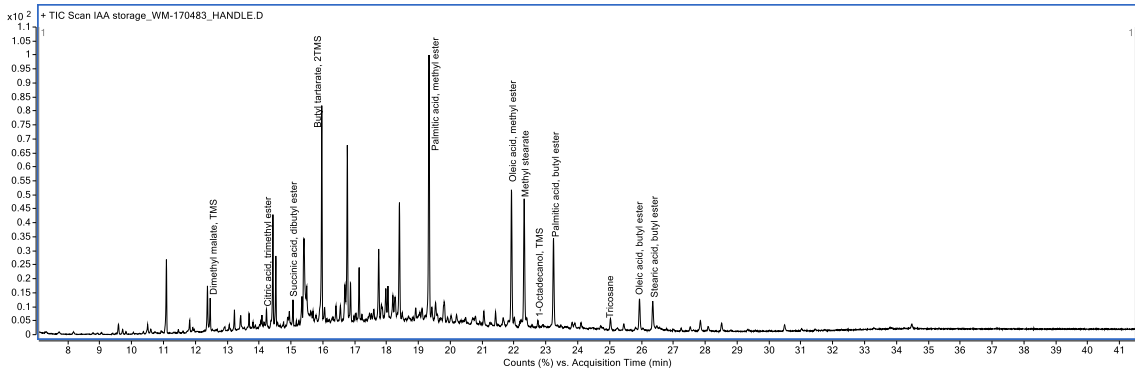
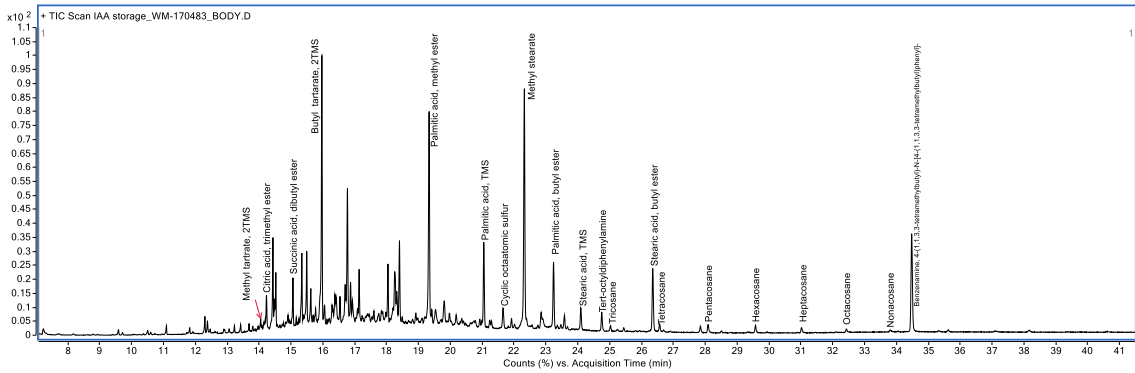
Vessel 170483: sample 170483\_I: TLE



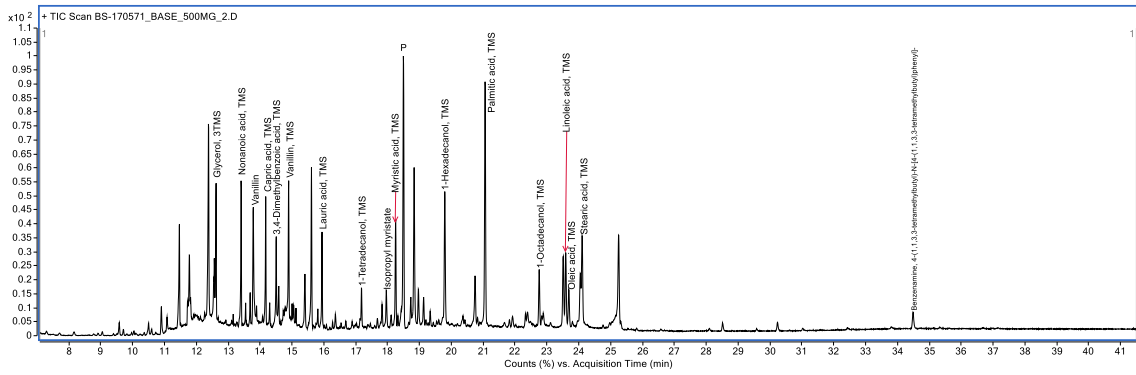
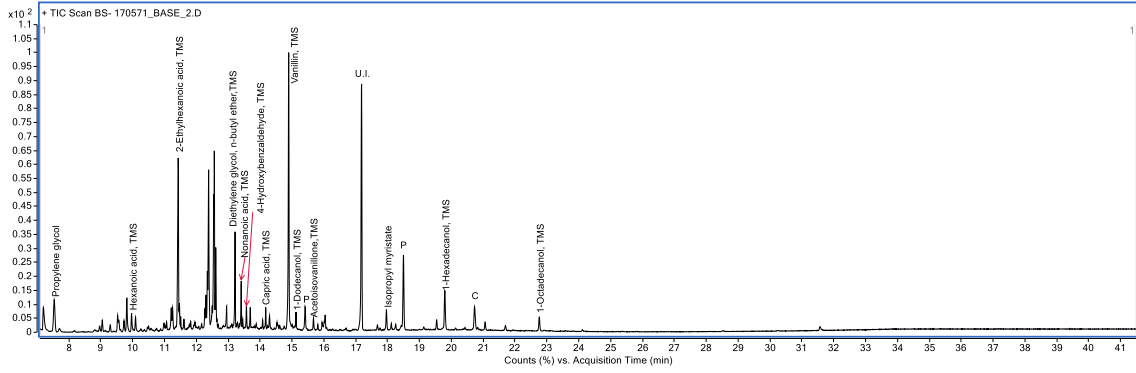
Vessel 170483: sample 170483\_I: WM



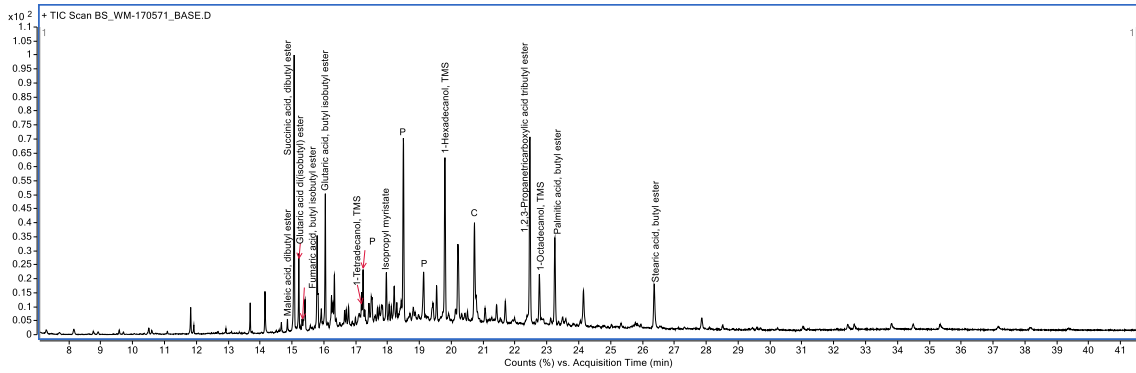
Vessel 170483: sample 170483\_II: WM (TLE not analyzed)



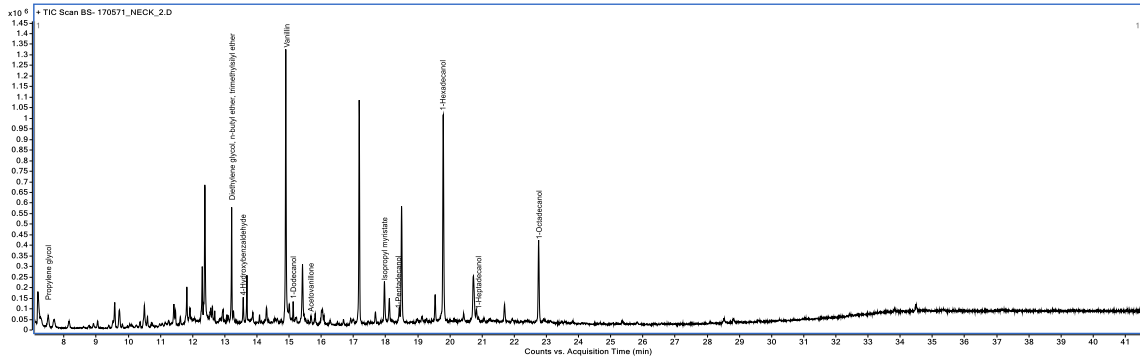
# Vessel 170571: sample 170571\_I: TLE



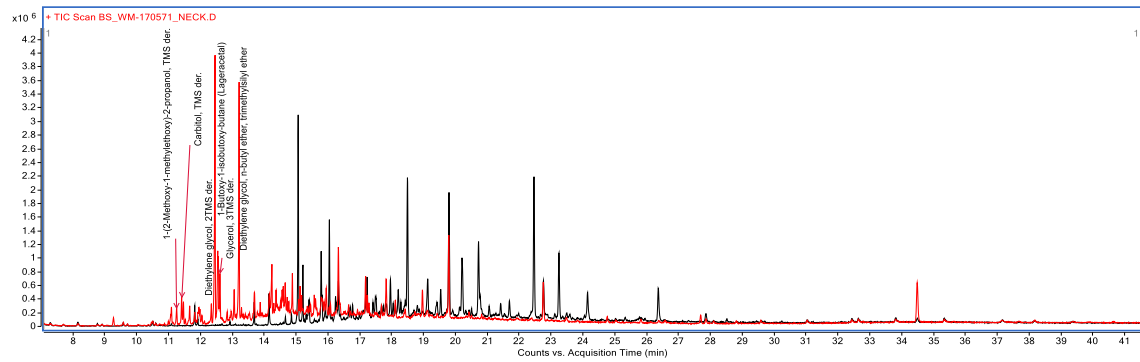
# Vessel 170571: sample 170571\_I: WM



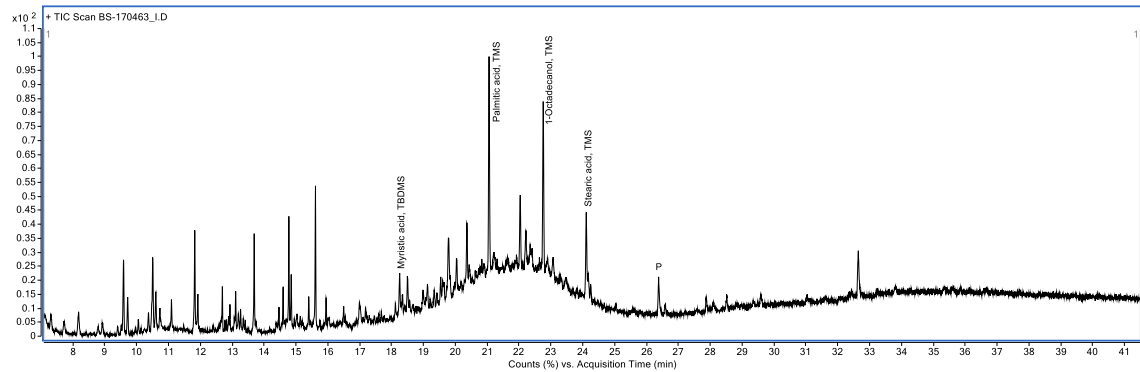
### Vessel 170571: sample 170571\_II: TLE



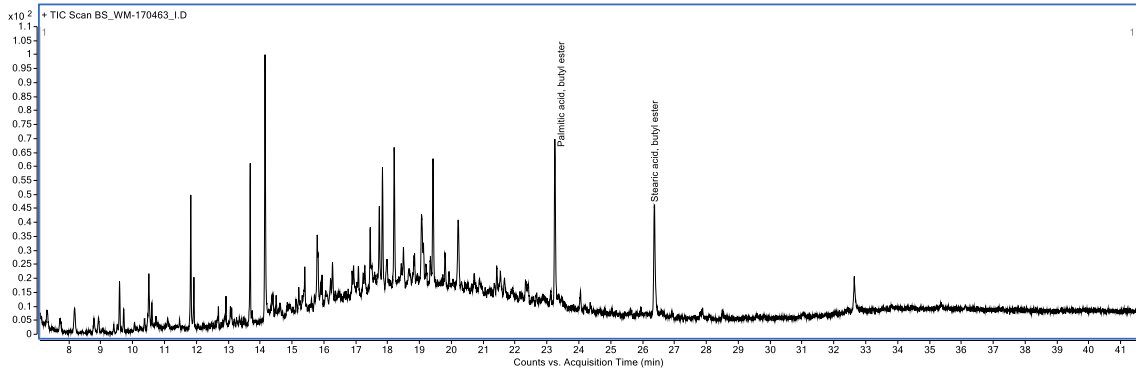
### Vessel 170571: sample 170571\_II: WM



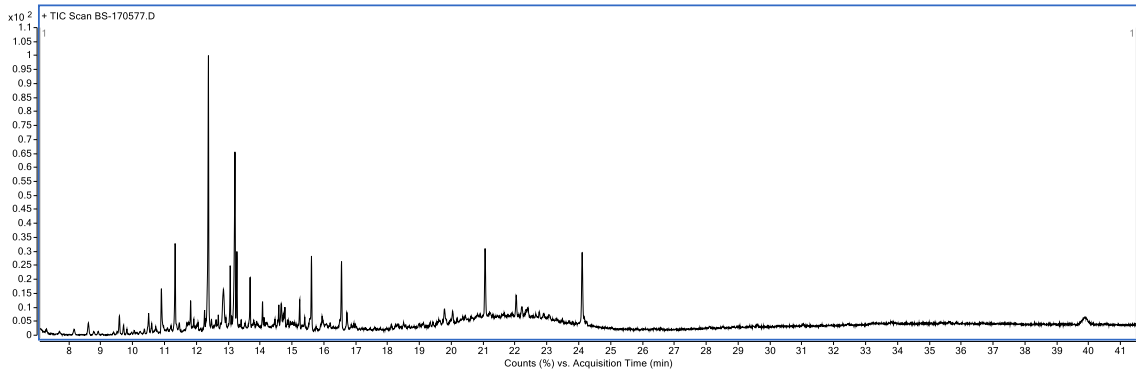
### Vessel 170463\_I: sample 170463\_I: TLE



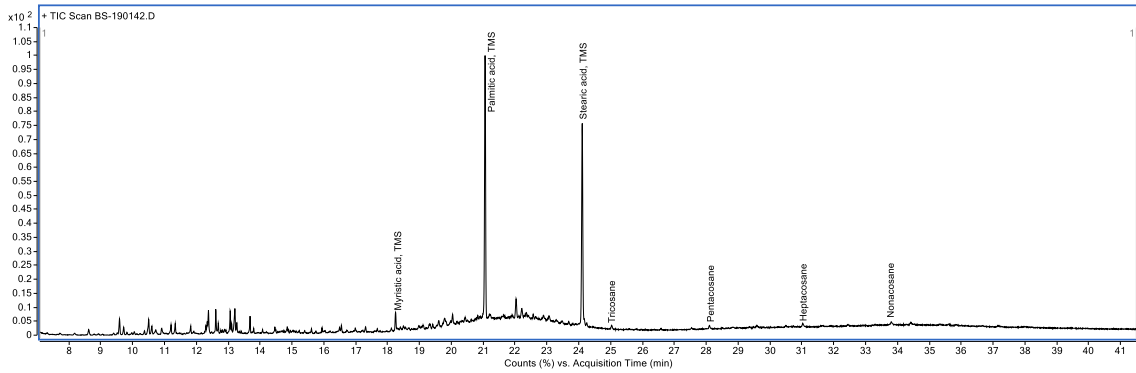
Vessel 170463\_I: sample 170463\_I: WM



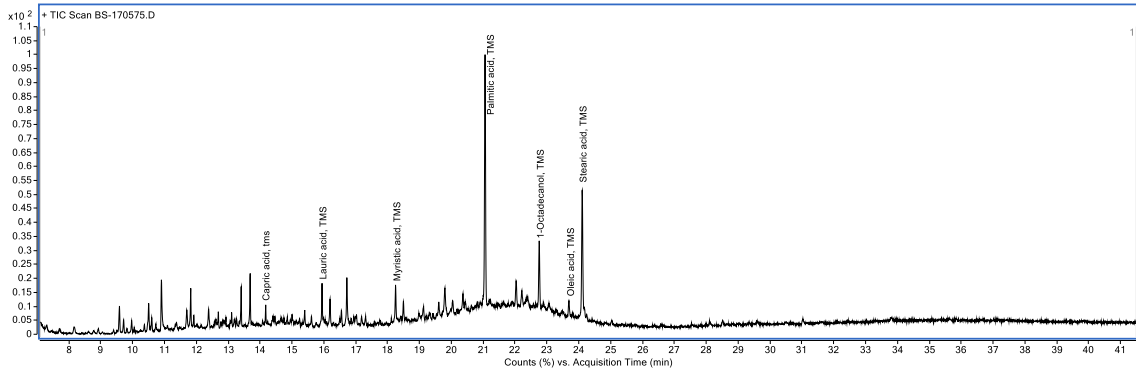
Vessel 170577/190142: sample 170577: TLE (WM not analyzed)



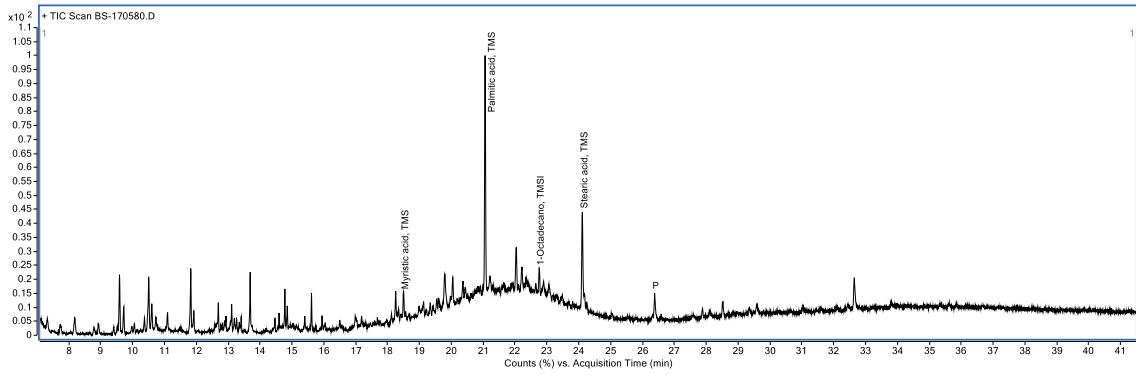
Vessel 170577/190142: sample 190142: TLE (WM not analyzed)



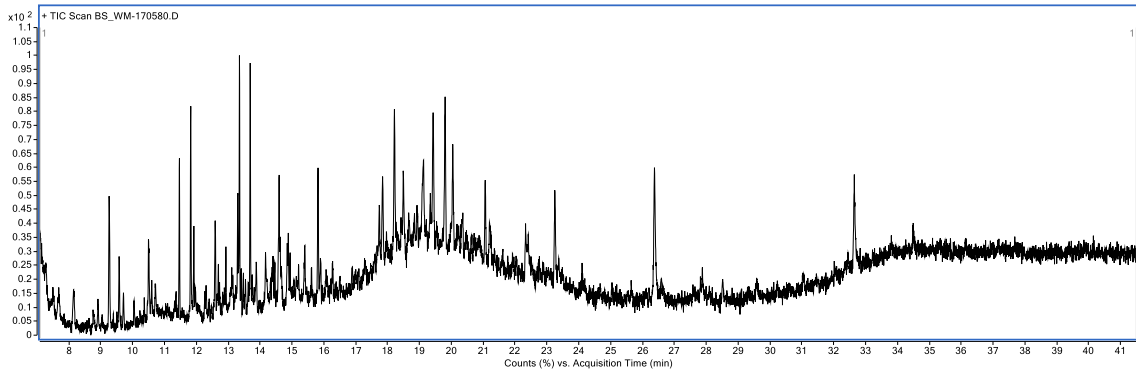
Vessel 170575: sample 170575: TLE (WM not analyzed)



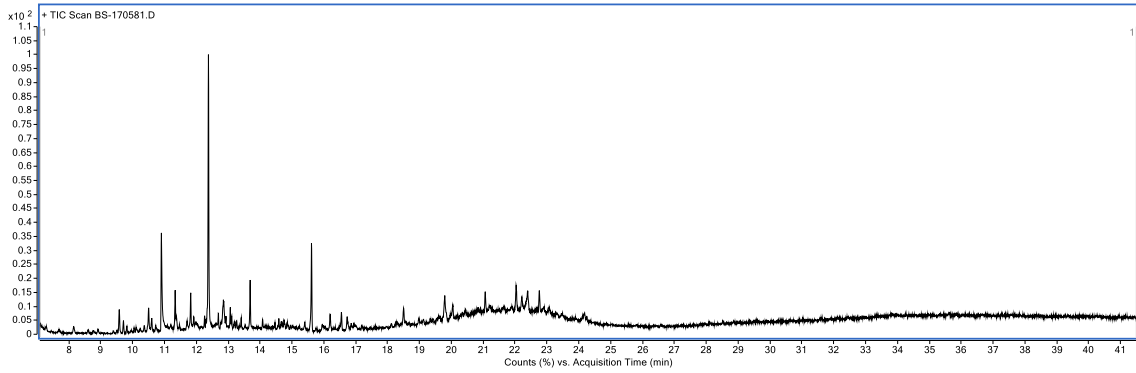
Vessel 170580: sample 170580: TLE



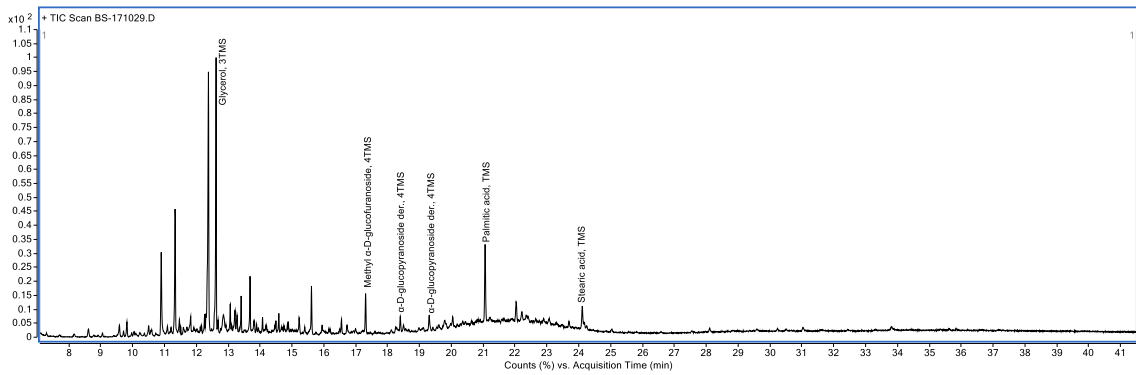
Vessel 170580: sample 170580: WM



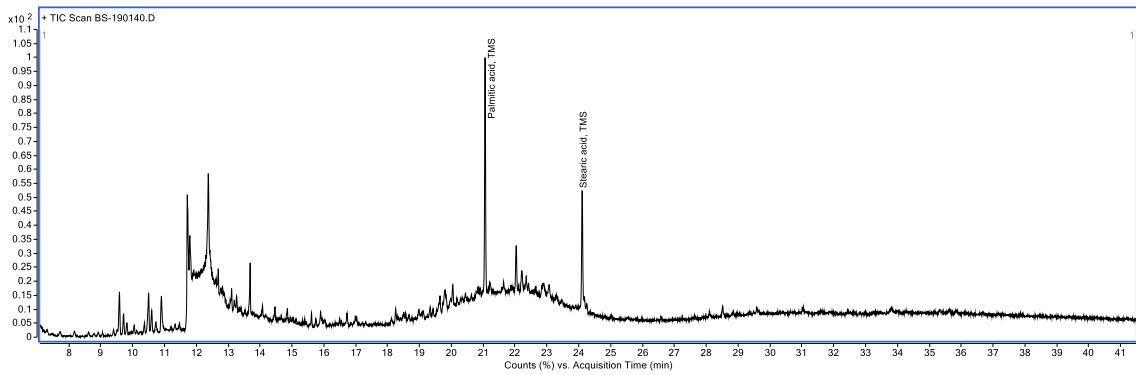
Vessel 170581: sample 170581: TLE (WM not analyzed)



Vessel 171029: sample 171029: TLE (WM not analyzed)

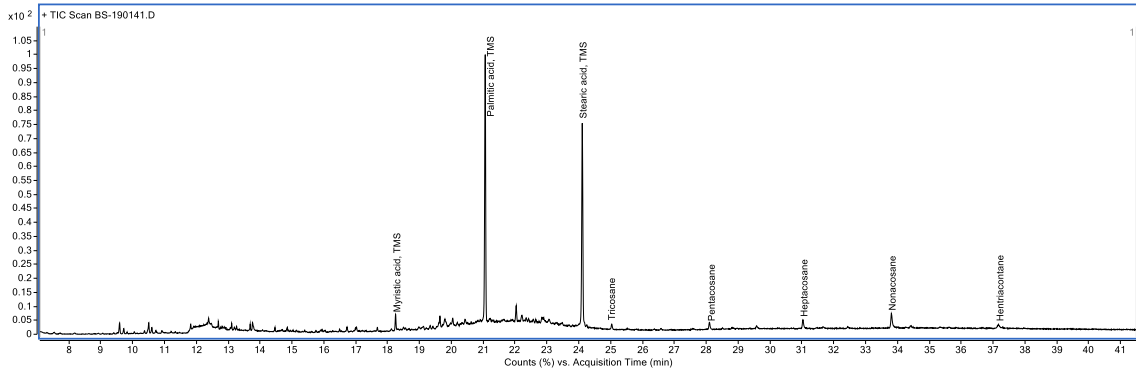


Vessel 190140/1: sample 190140: TLE (WM not analyzed)





Vessel 190140/1: sample 190141: TLE (WM not analyzed)



Vessel 190143: sample 190143: TLE (WM not analyzed)

