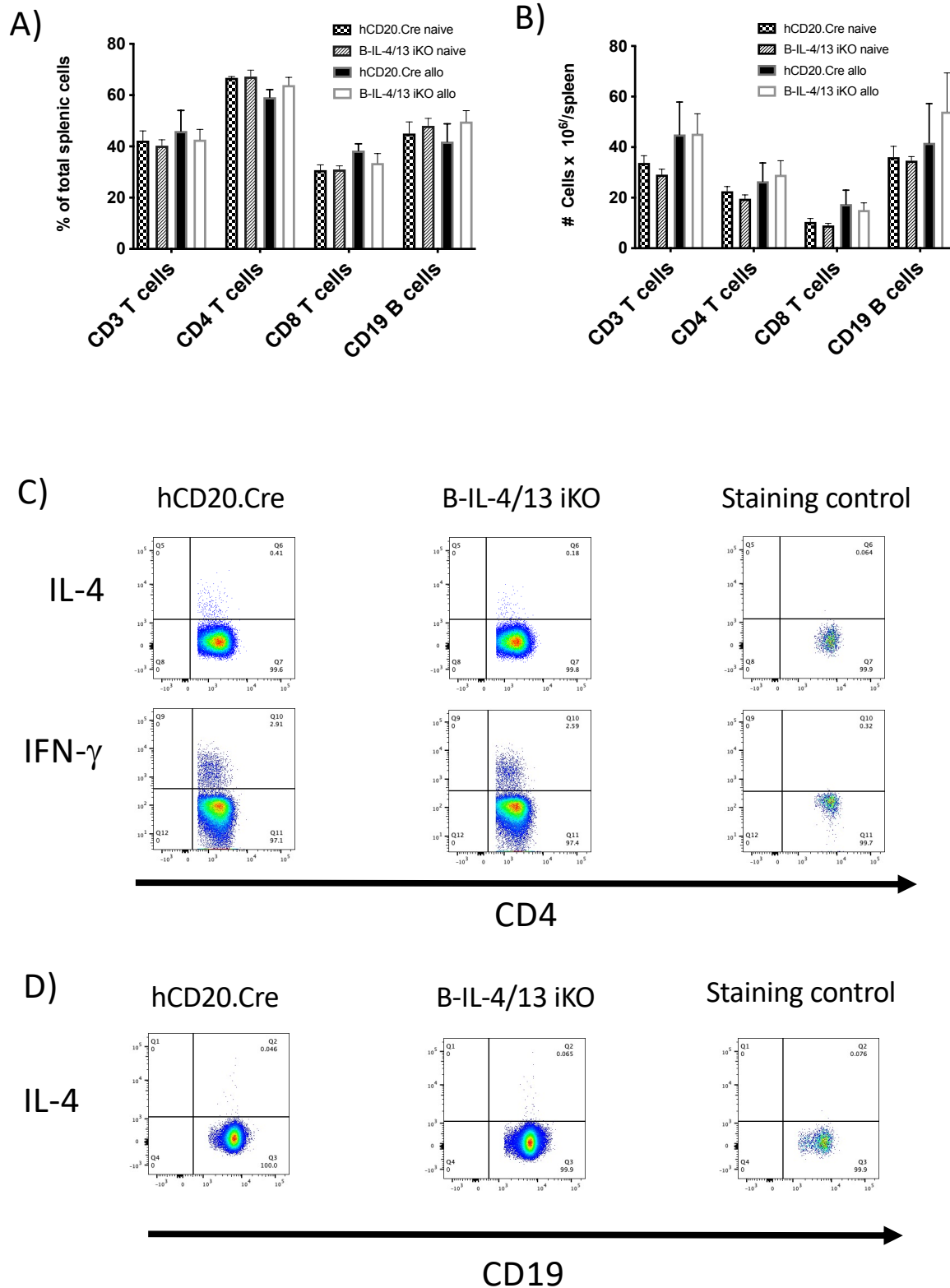
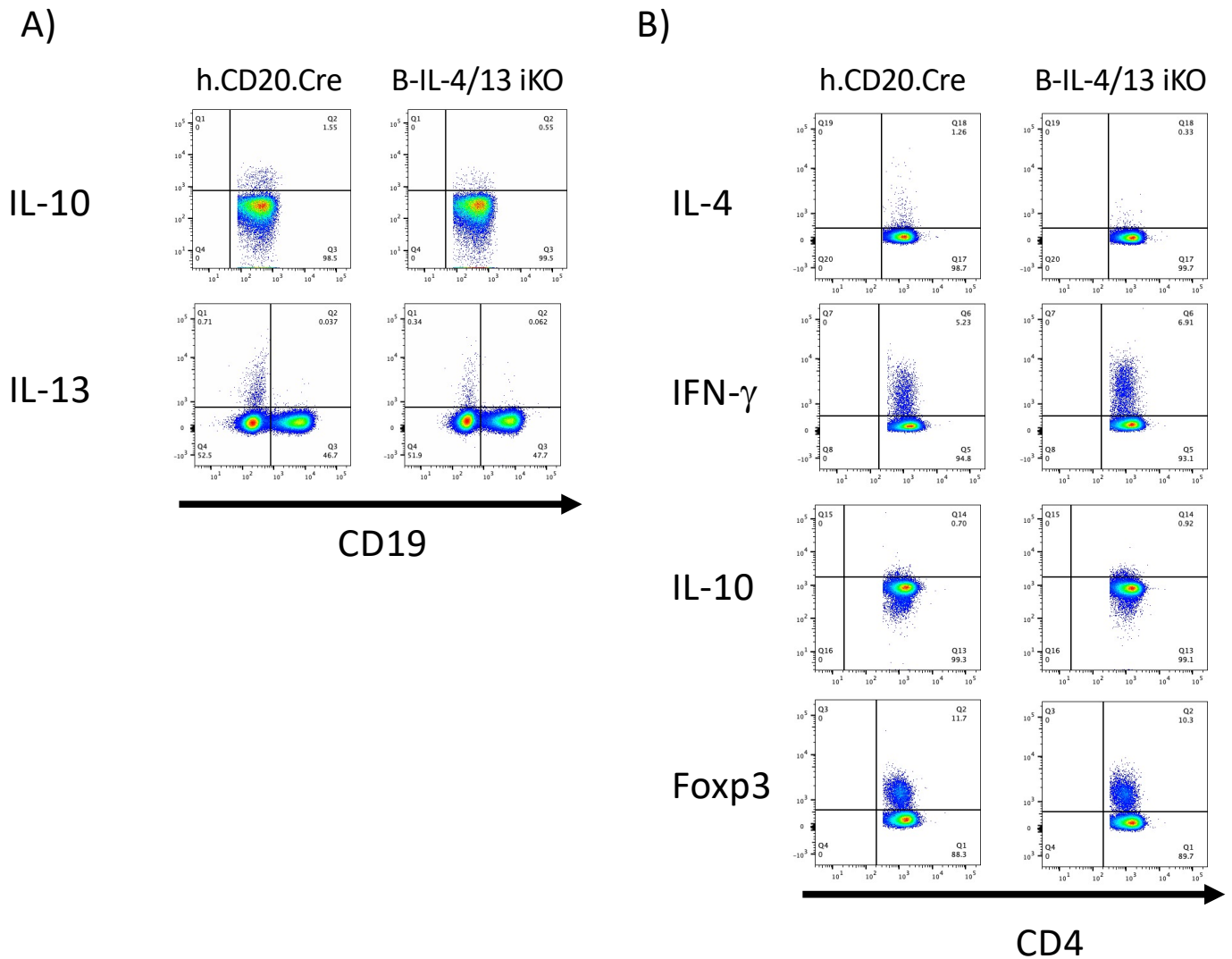


Supplemental Figure 1



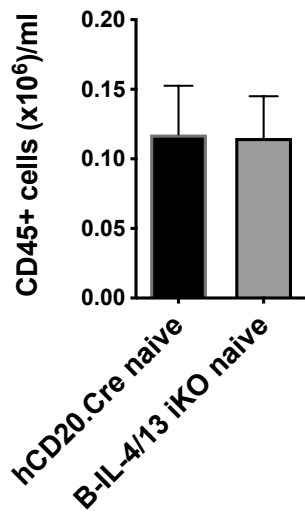
Bar graphs showing frequency **(A)** and cell number **(B)** of total (CD3+), CD4+, and CD8+ T cells and CD19+ B cells in spleens of naive and allo-immunized Tam-treated hCD20.Cre-control and B-IL-4/13 iKO mice. n= 3-5 mice/group. Graphs show mean \pm SD. Representative flow cytometry plots showing cytokine expression by intracellular staining of splenic lymphocytes from naive hCD20.Cre-control and B-IL-4/13 iKO mice: **(C)** CD4+ T cells stained for IL-4 and IFN γ with corresponding staining controls. **(D)** CD19+ B cells stained for IL-4 with corresponding staining control.

Supplemental Figure 2



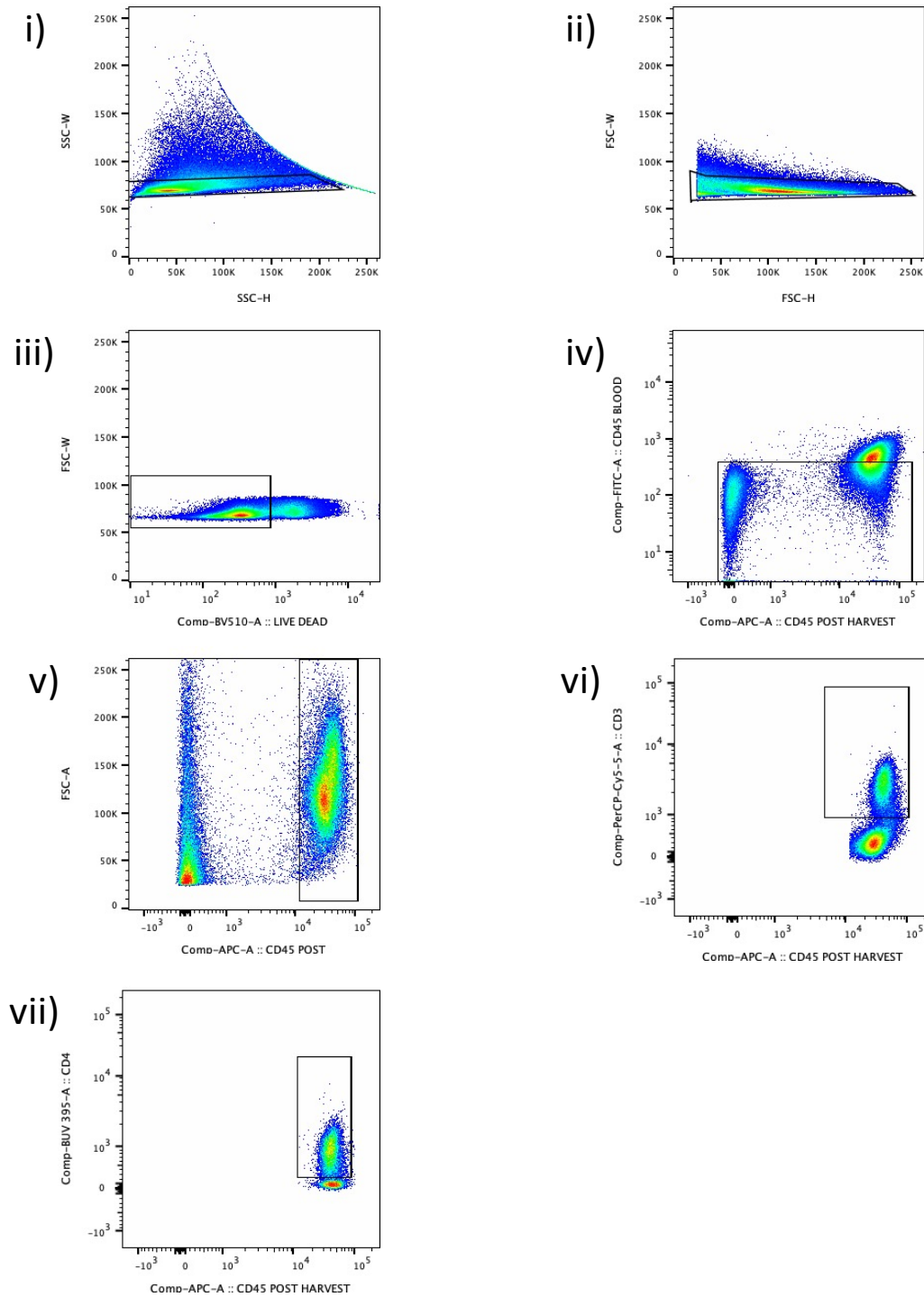
Representative flow cytometry plots showing intracellular staining for cytokines and Foxp3 in splenic B and CD4⁺ T cells from alloimmunized mice (day 14). (Cumulative data shown in Fig 1). **(A)** CD19⁺ B cell intracellular IL-10 staining (CD19 gate) and IL-13 staining (lymphocyte gate). **(B)** CD4⁺ T cell intracellular staining (CD4 gate) for each indicated cytokine or transcription factor.

Supplemental Figure 3



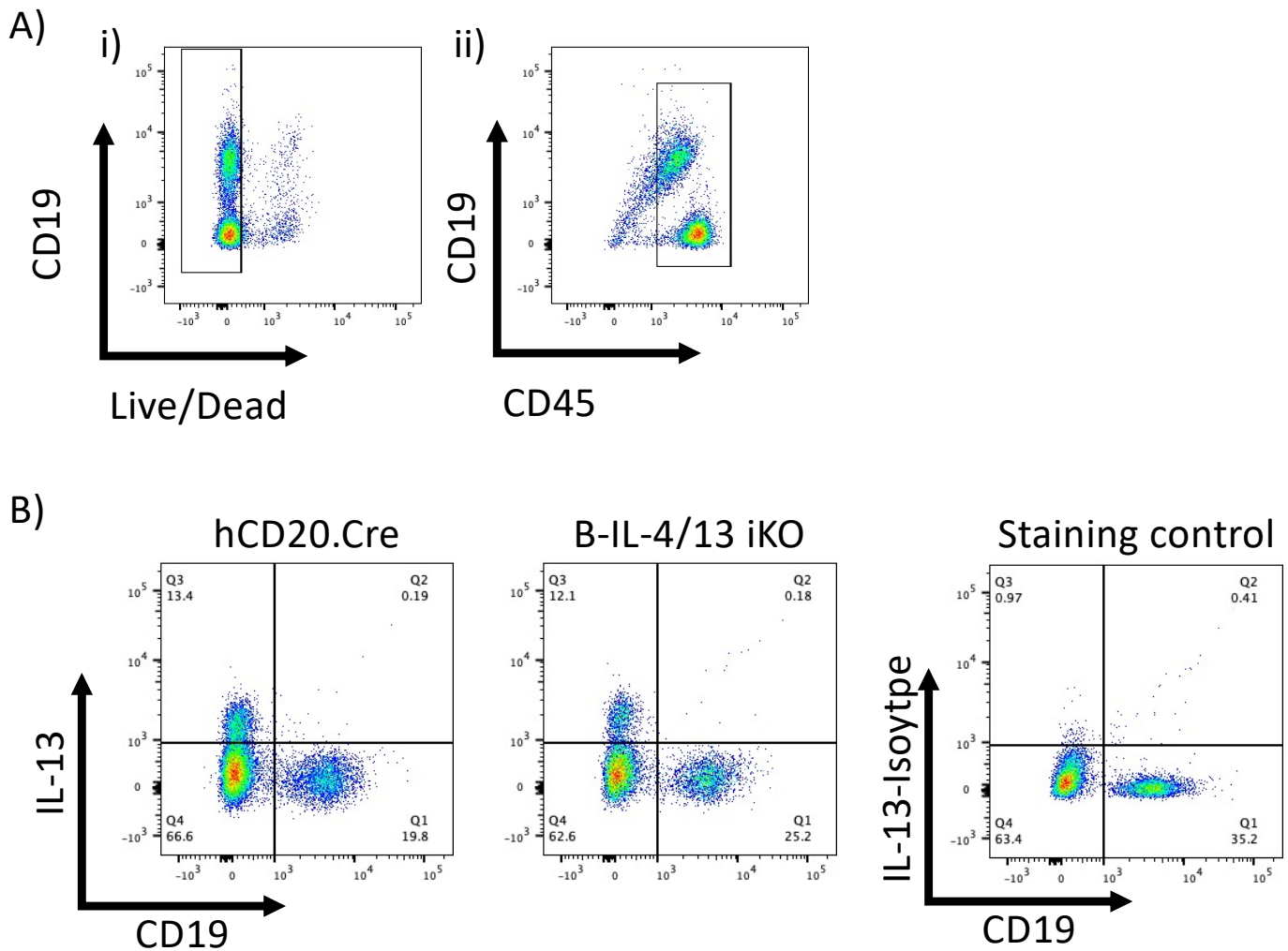
BAL cell numbers recovered from naive mice from TAM-treated hCD20.Cre-Control and B-IL-4/13 iKO. **A)** Total CD45+ cells recovered. n = 4-5 mice per group.

Supplemental Figure 4



Representative flow cytometry plots showing sequential gating strategy used to examine CD45+ cells infiltrating lung tissue in Figure 4. (i) SSC-W/SSC-H and (ii) FSC-W/FSC-H doublet exclusion, (iii) Dead cell exclusion, (iv) Exclusion of intravascular CD45+ cells (after injection of intravenous CD45-FITC), (v) total tissue CD45+ gate, (vi) CD3+ T cell gate, (vii) CD4+ T cell gate.

Supplemental Figure 5



Representative flow cytometry plots showing intracellular staining of IL-13 in B cells in comparison to total lymphocytes from digested lungs of Ova-immunized mice (ADD model). Cells were stimulated *in vitro* for 5 hours with LPIM. **A)** Gating strategy : i) Dead cell exclusion, ii) CD19+CD45+ total leukocytes gate, **B)** Intracellular staining for IL-13 expression by total CD45+ cells vs. CD19+ B cells isolated from digested lungs of hCD20.Cre-control, B-IL-4/13 iKO and isotype staining control.