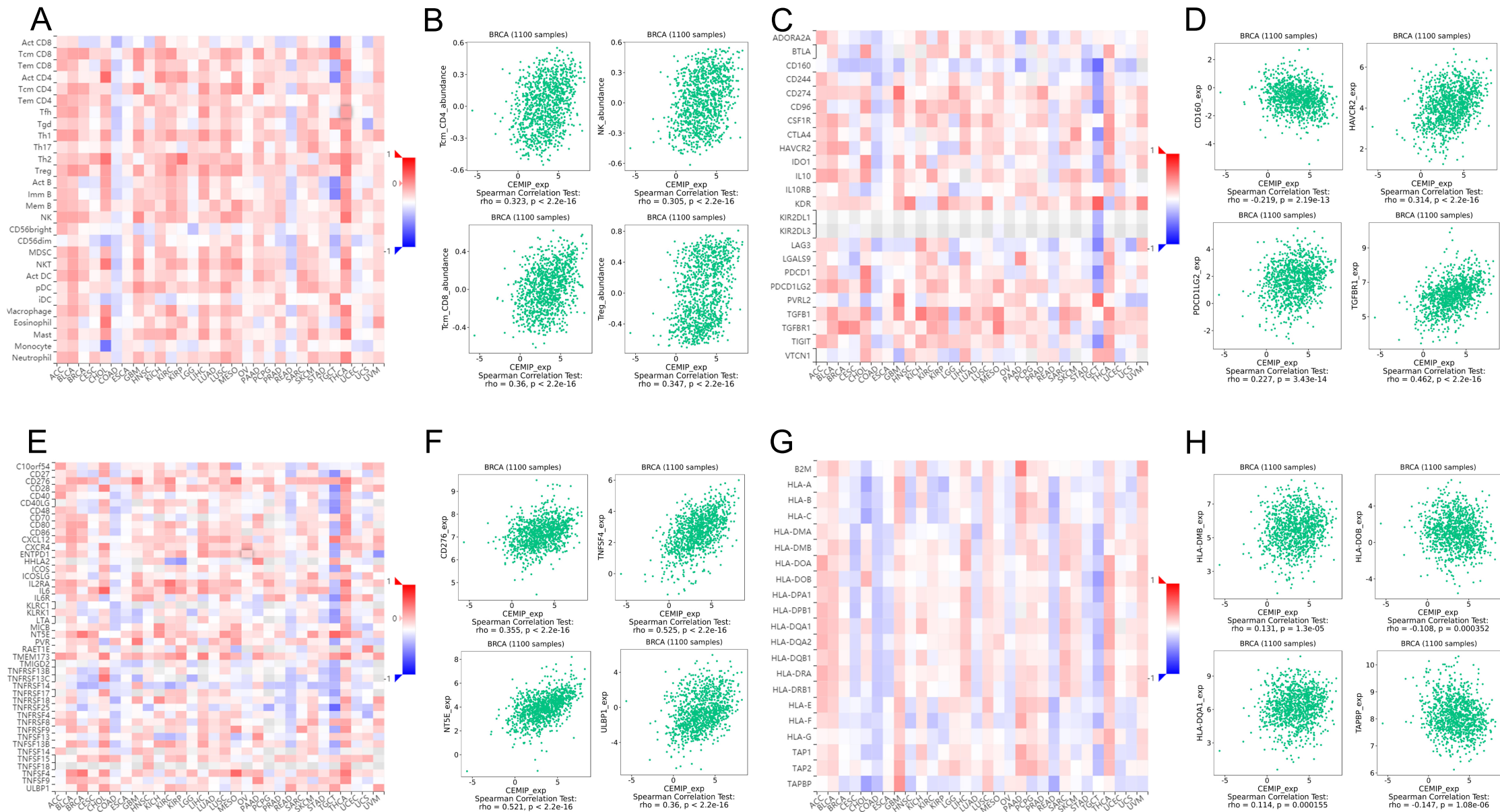
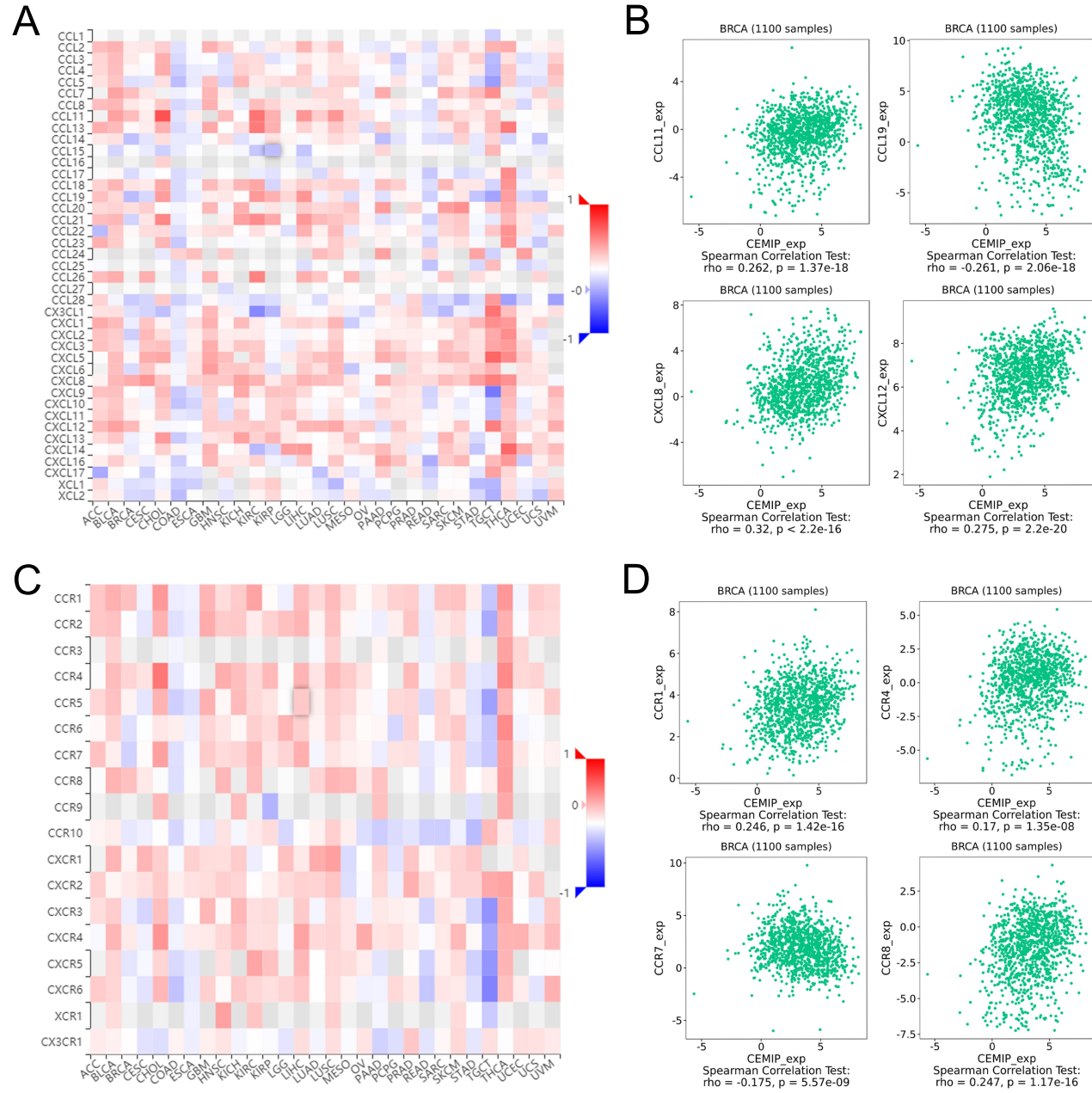
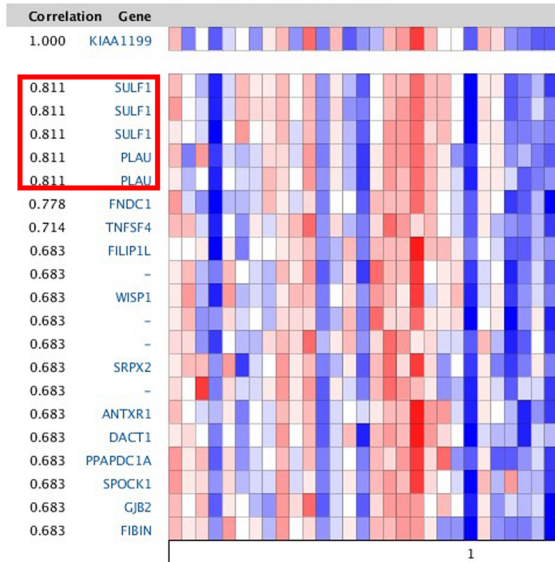


# Supp Fig 1

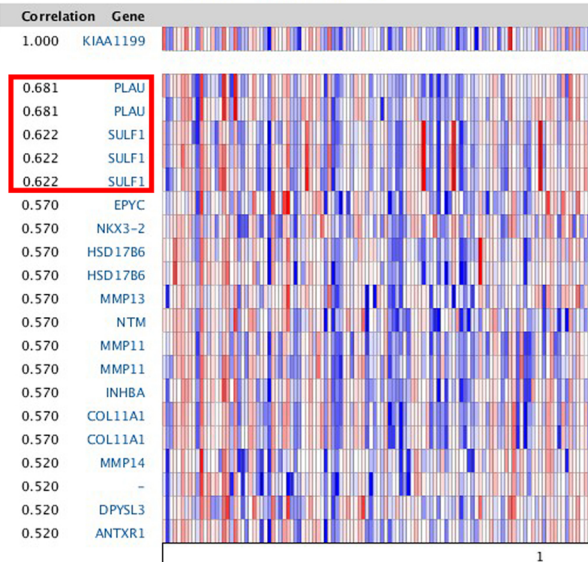




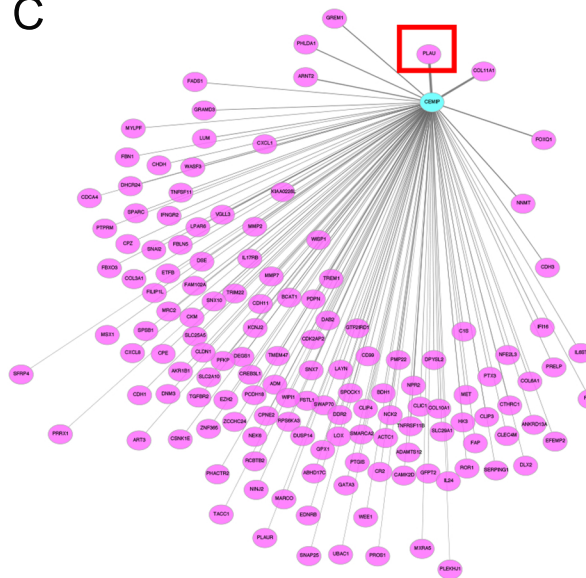
**A** Genes Coexpressed with KIAA1199 in Ginestier Breast  
Grouped by Cancer Type  
(log2 median-centered intensity)



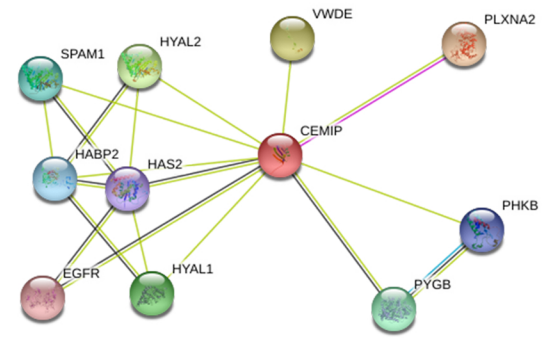
**B** Genes Coexpressed with KIAA1199 in Schmidt Breast  
Grouped by Cancer Type  
(log2 median-centered intensity)



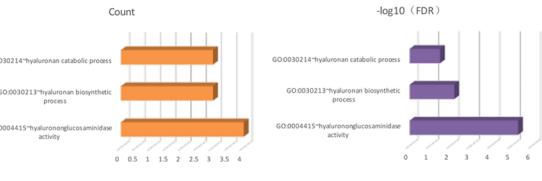
**C**



**D**



**E**



Supp table 1 Univariate and multivariate cox regression analyses of clinicopathological factors for DFS among these breast cancer patients

Variables	DFS			
	Univariate analysis		Multivariate analysis	
	HR (95%CI)	<i>P</i> -value	HR (95%CI)	<i>P</i> -value
Age	1.861(1.112-3.112)	0.018	2.200(1.290-3.753)	0.004
T grade			NS	
1		0.003		
2	0.763(0.490-1.187)	0.230		
3	2.267(1.193-4.307)	0.012		
N grade				
0		<0.001		<0.001
1	1.294(0.754-2.219)	0.349	1.542(0.893-2.664)	0.120
2	3.755(1.912-7.371)	<0.001	3.393(1.722-6.685)	<0.001
3	4.492(2.688-7.506)	<0.001	4.244(2.460-7.321)	<0.001
Menopausal status	1.414(0.938-2.133)	0.098	NA	
ER status	1.362(0.875-2.120)	0.172	NA	
PR status	1.326(0.884-1.988)	0.173	NA	
HER2 status	1.238(0.801-1.911)	0.337	NA	
Ki67 index	1.284(0.853-1.934)	0.231	NA	
CEMIP expression	2.751(1.824-4.151)	<0.001	3.062(1.986-4.721)	<0.001

NA: Non-analysis; NS: Non-significant

Supp table 2 Univariate and multivariate cox regression analyses of clinicopathological factors for OS among these breast cancer patients

Variables	OS			
	Univariate analysis		Multivariate analysis	
	HR (95%CI)	<i>P</i> -value	HR (95%CI)	<i>P</i> -value
Age	1.199(0.653-2.200)	0.558	NA	
T grade			NS	
1		0.036		
2	1.805(0.936-3.481)	0.078		
3	3.194(1.303-7.827)	0.011		
N grade				
0		<0.001		<0.001
1	1.970(0.979-3.965)	0.057	2.208(1.088-4.483)	0.028
2	5.439(2.232-13.225)	<0.001	4.750(1.879-12.010)	0.001
3	4.881(2.482-9.601)	<0.001	4.162(2.003-8.650)	<0.001
Menopausal status	1.301(0.763-2.218)	0.334	NA	
ER status	1.227(0.713-2.109)	0.460	NA	
PR status	2.110(1.235-3.608)	0.006	NS	
HER2 status	2.653(1.531-4.597)	0.001	NS	
Ki67 index	3.106(1.781-5.415)	<0.001	NS	
CEMIP expression	1.899(1.117-3.229)	0.018	1.823(1.055-3.149)	0.031

NA: Non-analysis; NS: Non-significant

Supp table 3 The basic clinicopathological characteristics of each cancer patients of Figure 4D

Characteristics	Patient 1	Patient 2	Patient 2
Age	51	49	56
T stage	2	2	2
N stage	1	1	1
subtype	Luminal type	Luminal type	Luminal type

Supp table 4 The relationships between CEMIP expression and the level of tumor-infiltration lymphocytes (TILs).

The level of TILs	CEMIP expression			<i>P</i> -value	R value
	Negative	Positive	Total		
Low	97	47	144	0.017	0.156
High	46	43	89		
Total	143	90	233		