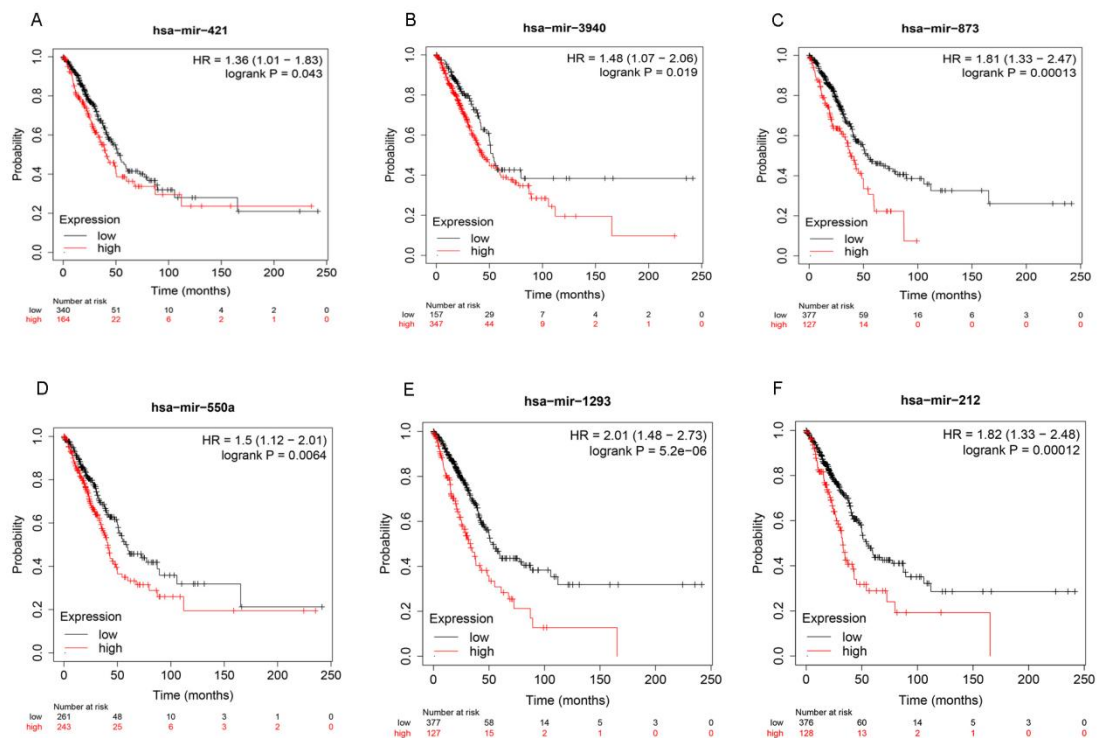


Supplementary Materials

Table S1 Primers

Name	Primers (5'→3')
U6	Forward CTCGCTTCGGCAGCACA
	Reverse AACGCTTCACGAATTTGCGT
Hsa-miR-421	Forward ATCAACAGACATTAATTGGGCGC
	Reverse GCGAGCACAGAATTAATACGAC
GAPDH	Forward ACTCCTCCACCTTTGACGC
	Reverse GCTGTAGCCAAATTCGTTGTC
Circ_0000567	Forward TGAAGAAGATGAAGTTCGGTAT
	Reverse GTGCCAGATTTCTGAGTTTT
β-actin	Forward AGAGCTACGAGCTGCCTGAC
	Reverse AGCACTGTGTTGGCGTACAG
TMEM100	Forward CATGGCAGCGACGATGGAGAAG
	Reverse CCGGCGATGAAGACAACCACAG
hsa-miR-873-5p	Forward GCAGGAACCTGTGAGTCTCCT
	Reverse GCGAGCACAGAATTAATACGAC
hsa-miR-3940-3p	Forward CAGCCCGGATCCCAGCCCACTT
	Reverse GCGAGCACAGAATTAATACGAC
hsa-miR-550a-3p	Forward TGTCTTACTCCCTCAGGCACAT
	Reverse GCGAGCACAGAATTAATACGAC
hsa-miR-1293	Forward TGGGTGGTCTGGAGATTTGTGC
	Reverse GCGAGCACAGAATTAATACGAC
hsa-miR-212	Forward ACCTTGCTCTAGACTGCTTACT
	Reverse GCGAGCACAGAATTAATACGAC

- 1 **Figure S1** K-M analyses using the KM plotter website (<http://kmplot.com/analysis/>) of 504 LUAD
- 2 patients. **A-F** Patients with higher expression levels of miR-3940, miR-873, miR-550a-2, miR-1293,
- 3 miR-421 and miR-212 had a shorter OS than those with lower expression levels of these miRNAs.



4

5

6 **Figure S2** The relative expression levels of 6 miRNAs according to the TCGA datasets.

