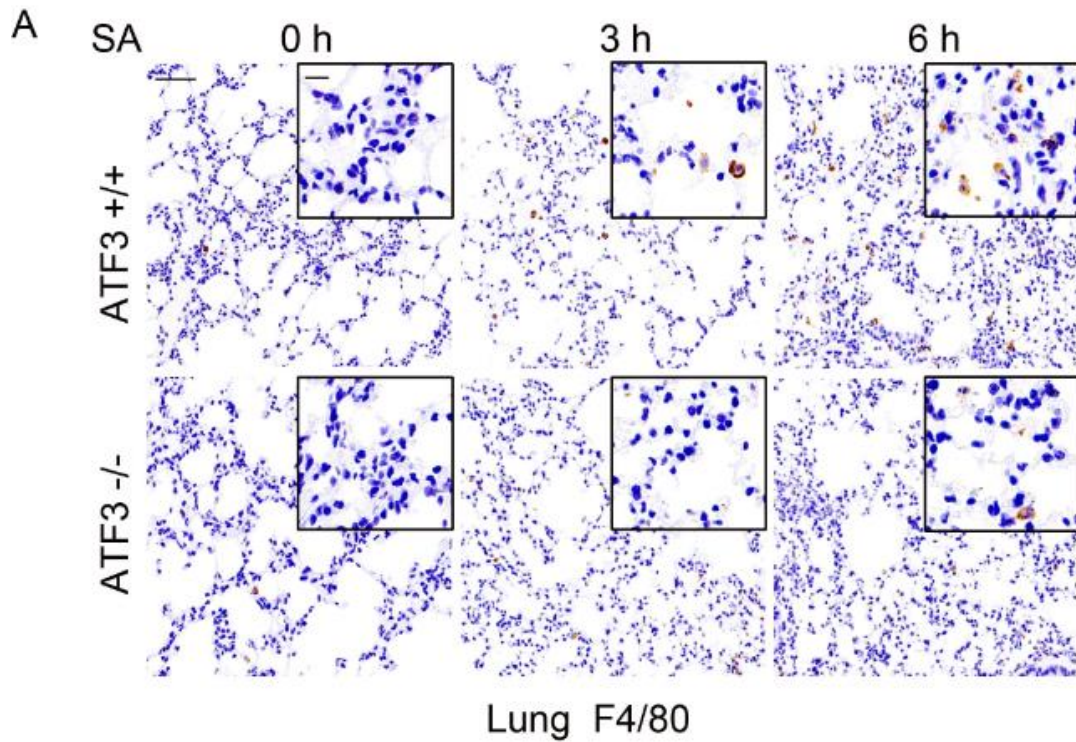
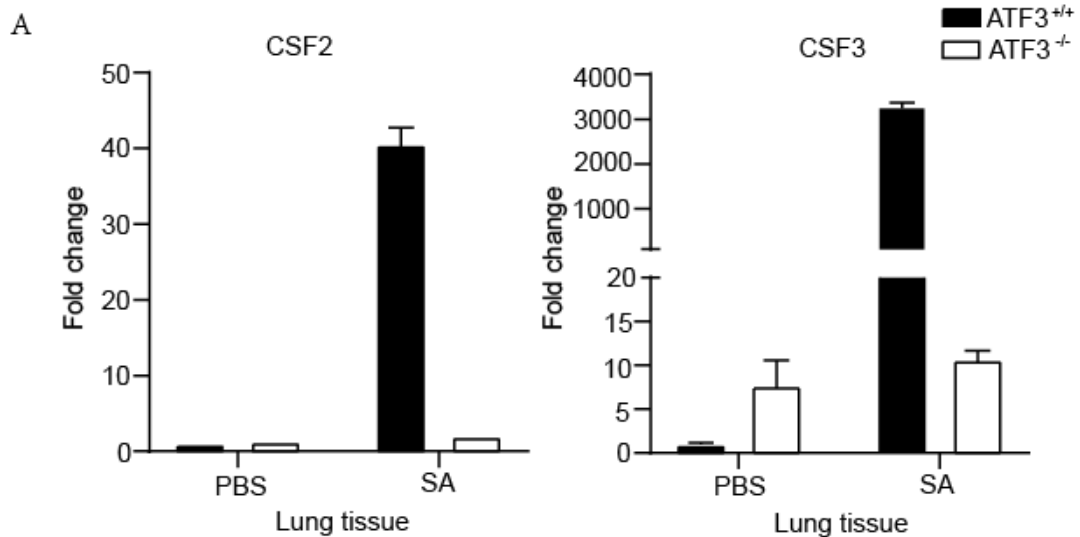


SUPPLEMENTARY FIGURES AND TABLE



Supplementary Fig. 1

(A) Representative images of WT and ATF3 KO mice lung tissues were assessed for macrophage (F4/80) after *S. aureus* infection for 0,3, or 6 h.



Supplementary Fig. 2

(A) WT and ATF3 KO mice were infected with *S. aureus* (5×10^7 CFU/mouse) and then euthanized at 6 h and the expression level of lung factors such as CSF2 and CSF3 in lung tissue were detected using quantitative PCR (qPCR).

Supplementary Fig. 3 | Uncropped western blot images of the indicated Figures.

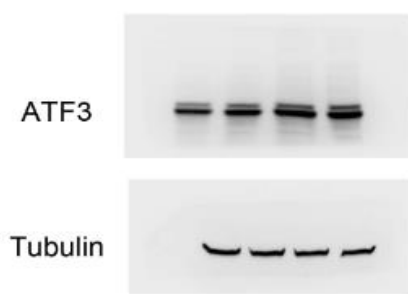


Figure 4A

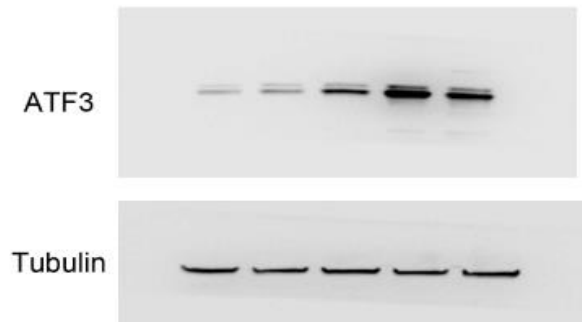


Figure 4B

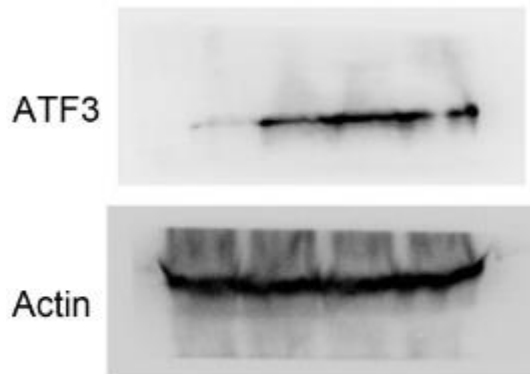


Figure 4C

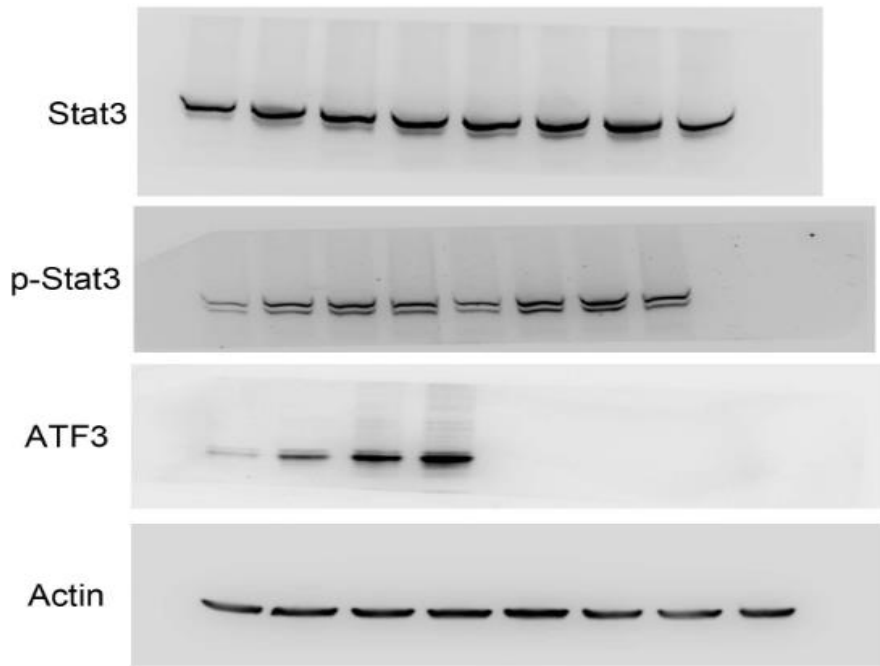


Figure 5A

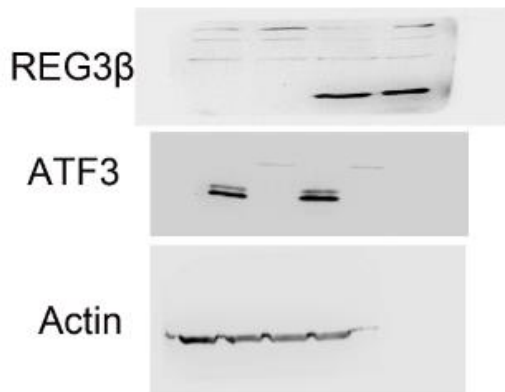


Figure 6D

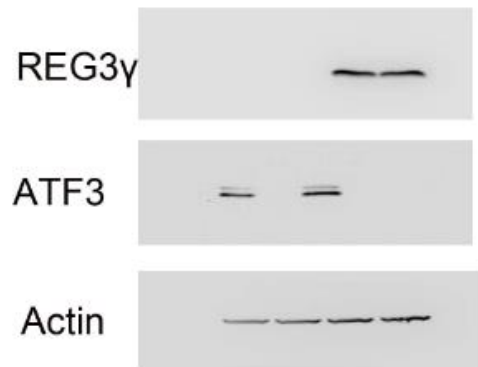


Figure 6E

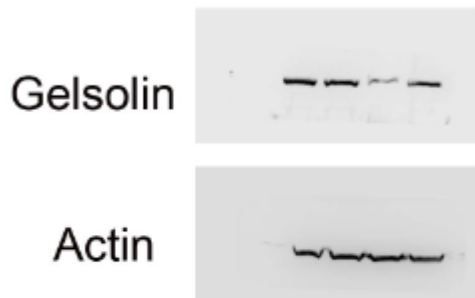


Figure 7D

Supplementary Table 1. Primers used for qPCR

Name	Primer sequence (5'-3')
Socs3-F	GGACCAAGAACCTACGCATCCA
Socs3-R	CACCAGCTTGAGTACACAGTCG
CXCL1-F	CGCTTCTCTGTGCAGCGCTGCT
CXCL1-R	CAAGCCTCGCGACCATTCTTGA
CXCL2-F	TCCAGAGCTTGAGTGTGACG
CXCL2-R	TCCAGGTCAGTTAGCCTTGC
S100A8-F	TGTCCTCAGTTTGTGCAGAATATAAA
S100A8-R	TCACCATCGCAAGGAACTCC
S100a9-F	AAAGGCTGTGGGAAGTAATTAAGAG
S100a9-R	GCCATTGAGTAAGCCATTCCC
Il10-F	ATGCTGCCTGCTCTTACTGACTG
Il10-R	CCCAAGTAACCCTTAAAGTCCTGC
IL18-F	ACCTCCAGCATCAGGACAAAG
IL18-R	TGTACAGTGAAGTCGGCCAAAG
IL-33-F	TCCAACCTCCAAGATTTCCTCCG
IL-33-R	CATGCAGTAGACATGGCAGAA
Ccl2-F	TTAAAAACCTGGATCGGAACCAA
Ccl2-R	GCATTAGCTTCAGATTTACGGGT
Reg3 α -F	GGCACCGAGCCCAATG
Reg3 α -R	GGATTTCTCTCCCATGCAAAGT
Reg3 β -F	ATGGCTCCTACTGCTATGCC
Reg3 β -R	GTGTCCTCCAGGCCTCTTT
Reg3 γ -F	CGTGCCTATGGCTCCTATTGCT
Reg3 γ -R	TTCAGCGCCACTGAGCACAGAC
Reg3 δ -F	ACCACAGACCTGGGCTAATG
Reg3 δ -R	AGTCCAATCCAGATGTATGGGAA
IL17a-F	TTTAACTCCCTTGCGCAGAAA
IL17a-R	CTTCCCTCCGCATTGACAC
IL-22-F	ATGAGTTTTTCCCTTATGGGGAC
IL-22-R	GCTGGAAGTTGGACACCTCAA
IL-23-F	CAGCAGCTCTCTCGGAAT
IL-23-R	ACAACCATCTTCACACTGGATACG
Gelsolin-F	CAAAGTCGGGTGTCTGAGGC
Gelsolin-R	CAGGCACCAGGTCAAACCTTCTCC
18S rRNA-F	GGCTGTATTCCCCTCCATCG
18S rRNA-R	CCAGTTGGTAACAATGCCATGT
β -actin-F	CTCATGAAGATCCTGACCGAG
β -actin-R	AGTCTAGAGCAACATAGCACAG

CSF2-F	GGCCTTGGAAGCATGTAGAGG
CSF2-R	GGAGAACTCGTTAGAGACGACTT
CSF3-F	CTCAACTTTCTGCCCAGAGG
CSF3-R	TAGGTGGCACACAACACTGCTC

Supplementary Table 2. Primer pairs used for ChIP

Primer pairs	Sequence
Promo-Reg3 β -forward	GTTAACCCCATATACTCCTAGG
Promo-Reg3 β -reverse	ATAATCATGCTACAATCCACAG
Reg3 β -Cont- forward	CAGGAACACCTTGAGCATCAATT
Reg3 β -Cont- reverse	AAGTGGCCTCCTCCTATAGCCA
Promo-Reg3 γ -forward	TAACCTCATGAACACAAGTGTTG
Promo-Reg3 γ -reverse	ATTCTGAATTGTTTACTTGATAT
Promo-Reg3 γ -forward	TCAAATCATTTTAGCCTTGCT
Promo-Reg3 γ -reverse	TTCACGTTTCACATTAGAATG
Reg3 γ -Cont- forward	GTATATTACATAGTGGGATTCA
Reg3 γ - Cont- reverse	AAGATTTCTAAGAGGAAAGTAAT