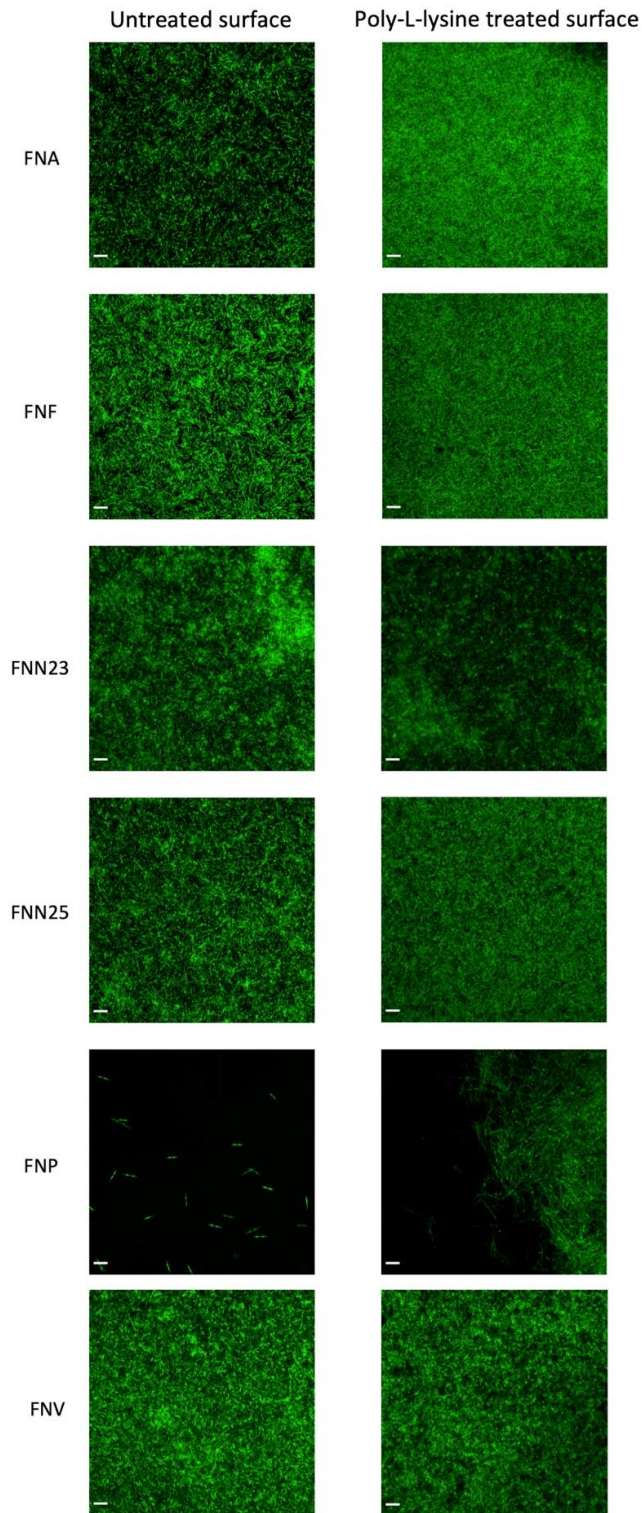


Supplementary Material

Supplementary figure 1: “Representative 2D CLSM images of *F. nucleatum* biofilms” can be found on the next page.

Bioinformatic supplementary material can be found in an enclosed zipped folder (SupplementaryMaterials_Bioinformatics).



Supplementary Figure 1: Representative 2D images of single-subspecies *F. nucleatum* biofilms imaged by CLSM. Biofilms were grown on untreated and poly-L-lysine coated plastic surfaces. Note the absence of a continuous biofilm layer in FNP: only single cells were observed on the untreated surface while a bacterial aggregate was observed on the poly-L-lysine treated surface. Scale bar: 10 μm .