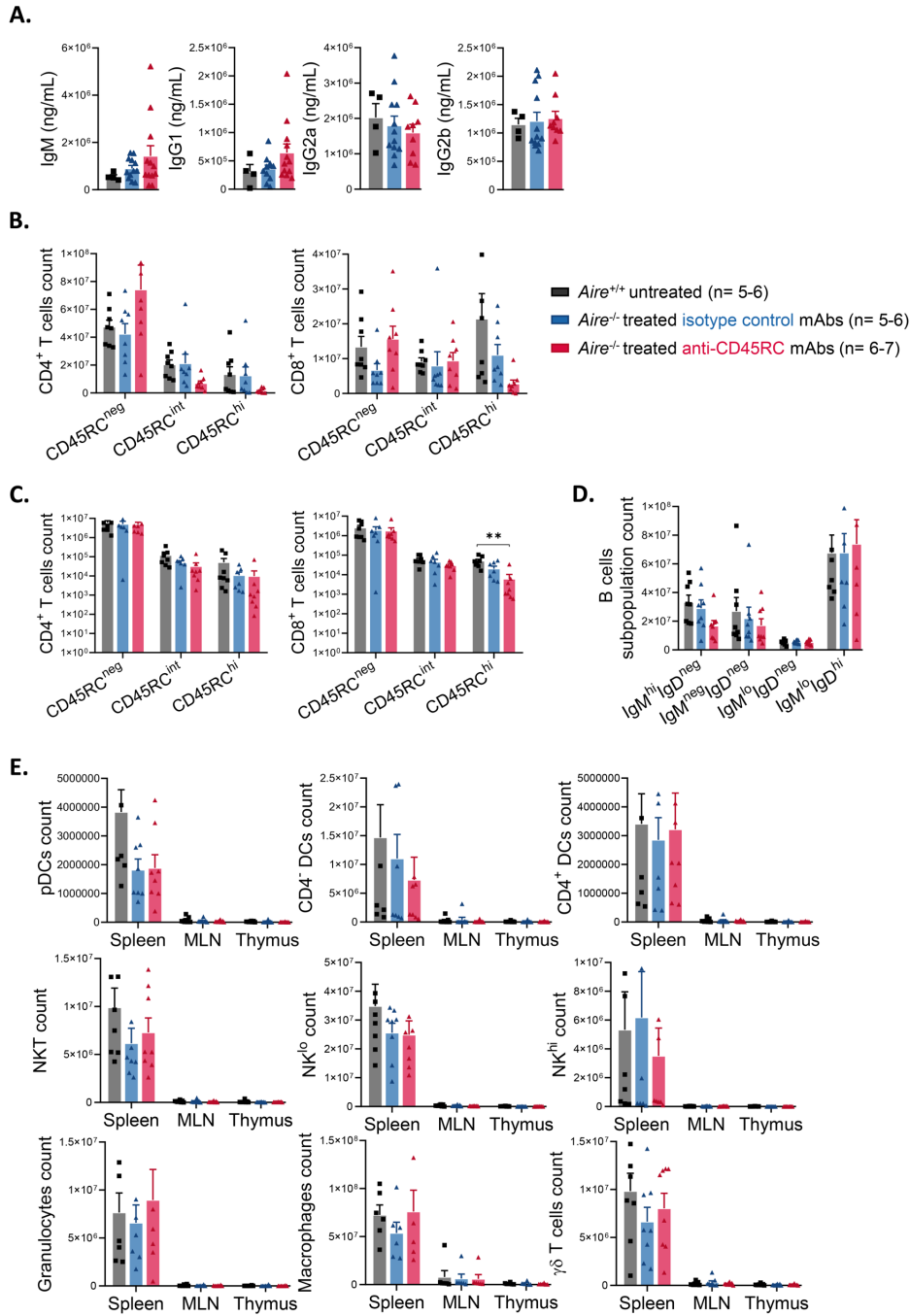


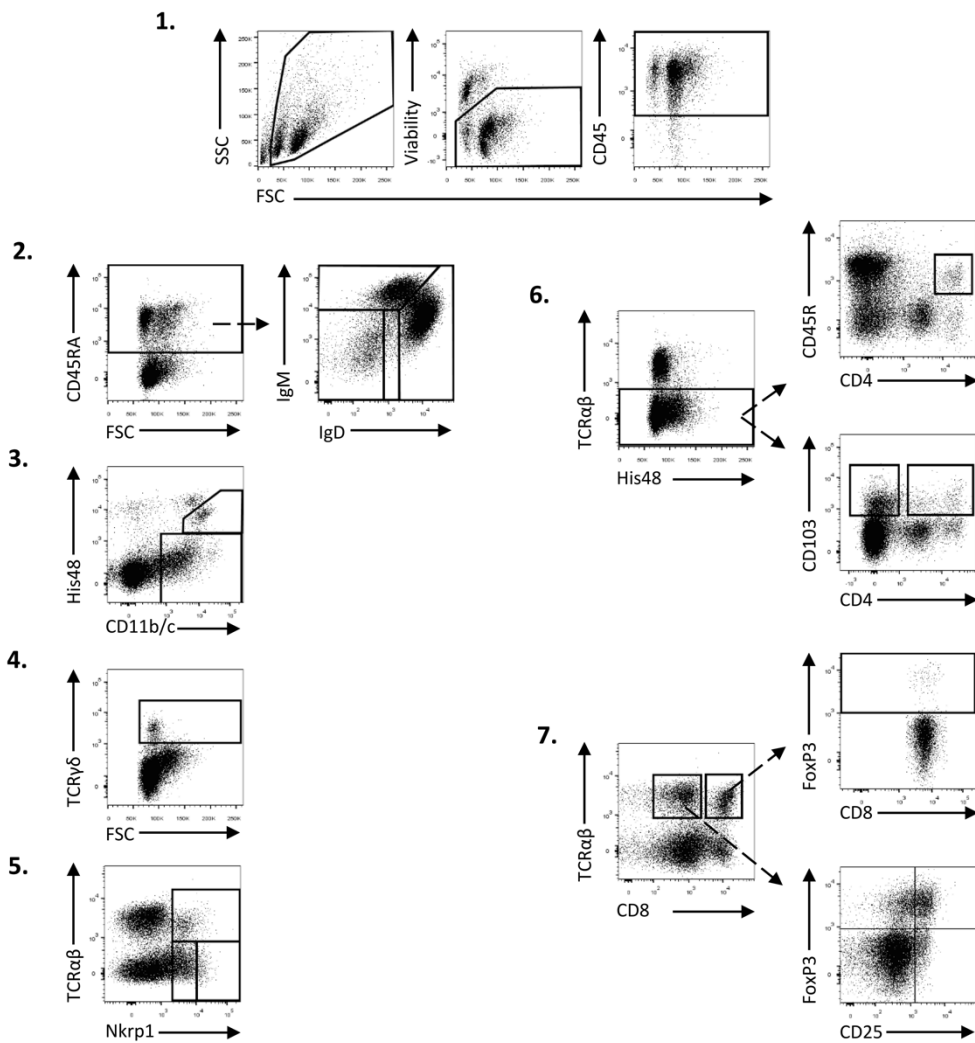
Suppl. Figure 1. Besnard et al.



Suppl. Figure 1: Anti-CD45RC mAbs specifically depletes CD45RC⁺ effector T cells. (A) IgM and IgG subtypes 1, 2a and 2b concentration were assessed by ELISA in sera from isotype control or anti-CD45RC mAbs-treated *Aire*^{-/-} rats compared to *Aire*^{+/+} animals taken at the end of the four-month period of treatment. Results are shown as mean ± SEM. CD45RC expression on

CD4⁺ (left) and CD8⁺ (right) T cells were analyzed on splenocytes (**B**) and thymocytes (**C**) from *Aire*^{+/+} and *Aire*^{-/-} rats after 4 months of treatment with the isotype control or anti-CD45RC mAbs. (**D**) B cells subpopulations in the spleen of *Aire*^{+/+} and *Aire*^{-/-} rats at the end of the treatment. (**E**) Phenotyping by flow cytometry of immune cells from spleen, MLN and thymus of *Aire*^{+/+} and *Aire*^{-/-} treated rats. **, p<0.01.

Suppl. Figure 2. Besnard et al.



Suppl. Figure 2: Gating strategy for immune cell phenotyping. (1) Dot plot of the first gates common to each cell populations. Specific gating strategies for (2) B cell subpopulations, (3) granulocytes and macrophages, (4) $\gamma\delta$ T cells, (5) NK, (6) dendritic cells and (7) Treg populations.

Suppl. Table I. Antibody used to define rat immune cells

Marker	Clone	Provider
CD4	OX35	BD Biosciences
CD8	OX8	In-house
CD25	OX39	In-house
CD40	HM 40-3	BD Biosciences
CD45	OX1-OX30	BD Biosciences
CD45R	His24	BD Biosciences
CD45RA	OX33	In-house
CD45RC	OX22	In-house
	3H1437	SantaCruz
CD80	3H5	BD Biosciences
CD103	OX62	In-house
CD127	Polyclonal	Thermofisher
CD161	3.2.3	In-house
85C7	85C7 FX	In-house
FoxP3	Fkj-16s	Thermofisher
IgM	MARM-4	Biorad
IgD	MARD	Biorad
TCRab	R7/3	BD Biosciences
TCRgd	V65	In-house

Suppl. Table II. Antibody used to stain human cells

Marker	Clone	Provider
CD3	UCHT1	BD Biosciences
CD4	SK3	BD Biosciences
CD27	M-T271	BD Biosciences
CD28	CD28.2	BD Biosciences
CD45RA	HI100	BD Biosciences
CD45RC	MT2	IQ-products
CD103	Ber-ACT8	BD Biosciences
CD127	hIL-7R-M21	BD Biosciences
CD154	TRAP1	BD Biosciences
CD279	EH12.1	BD Biosciences
FoxP3	259D/C7	BD Biosciences
GITR	REA841	Miltenyi
HLA-DR	L243	BD Biosciences
IFN γ	B27	BD Biosciences
IL-10	JES3-9D7	BD Biosciences
IL-34	IC5265P	R&D Systems
Tbet	O4-46	BD Biosciences
TGF β 1	TW4-9E7	BD Biosciences