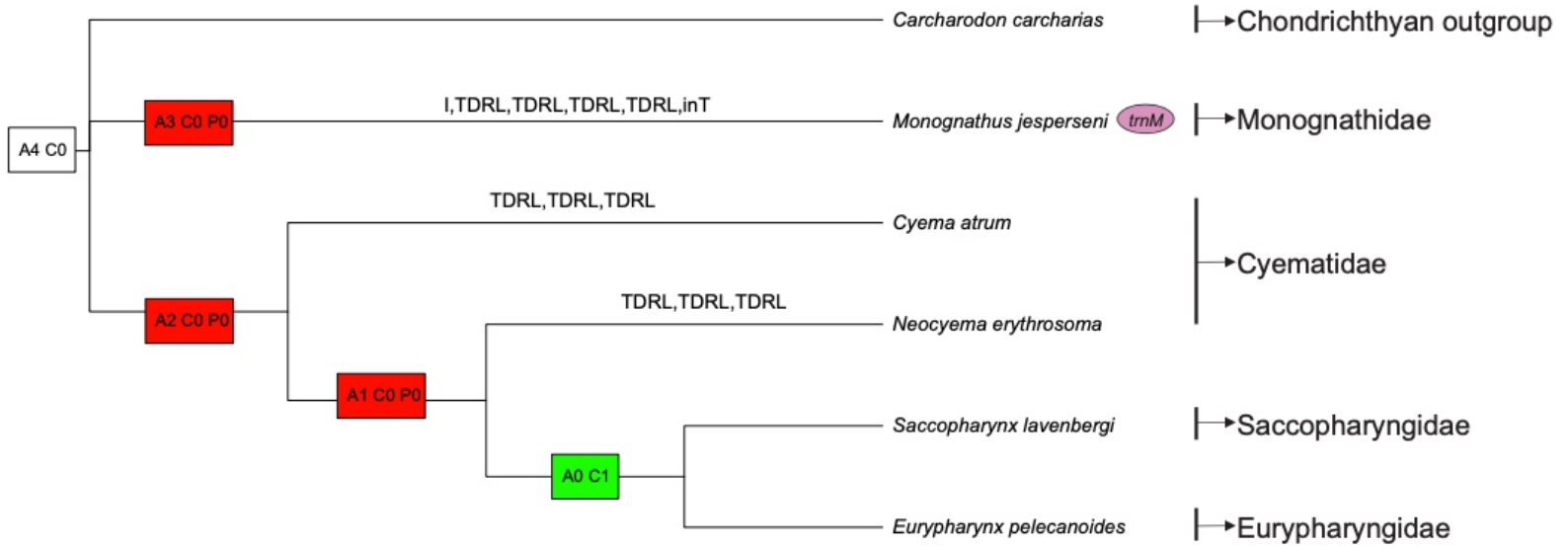
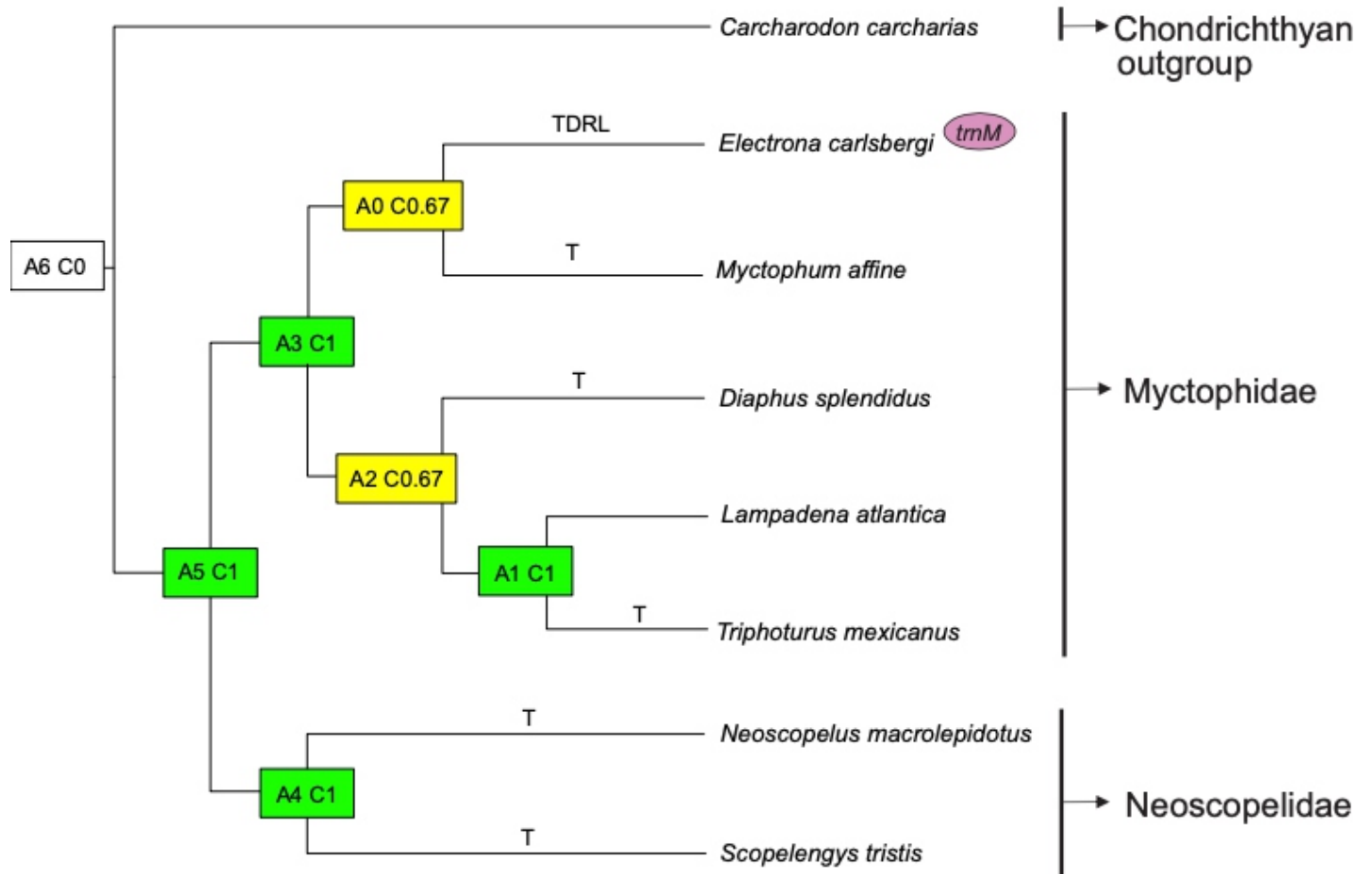


Fig. S2. TreeREx analysis for vertebrate class. (A) Actinopteri - Saccopharyngiformes, (B) Actinopteri - Myctophiformes, (C) Actinopteri - Pleuronectiformes, (D) Amphibia – Anura, (E) Lacertilia - Reptilia. The rearrangements on the branches are given as Transposition, Inversion, Inverse transposition, and Tandem-Duplication-Random-Loss events (TDRLs).

### A. Actinopteri - Saccopharyngiformes



### B. Actinopteri - Myctophiformes



C. Actinopteri - Pleuronectiformes

