

Figure S6

A

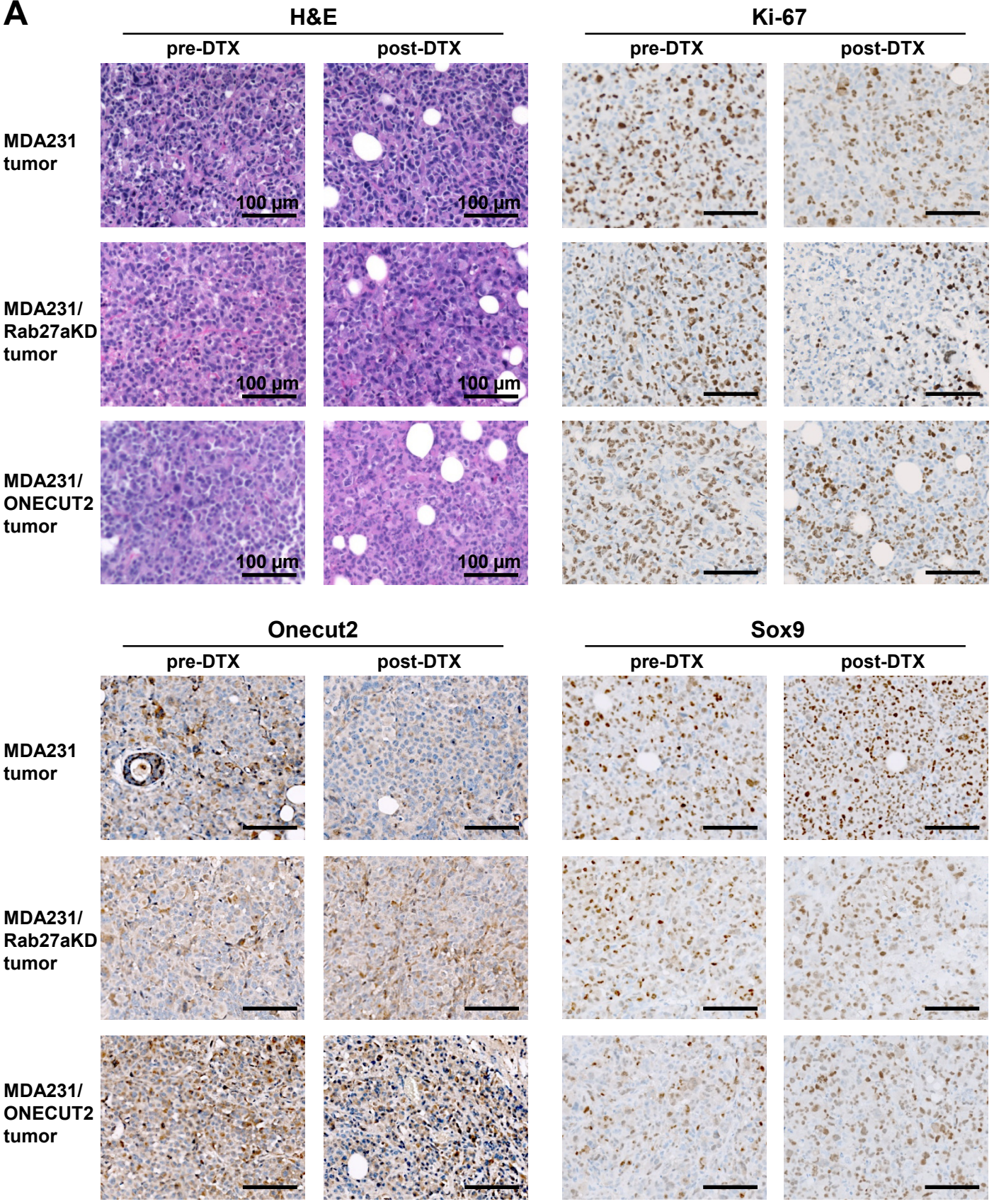


Figure S6 (continued)

B

Onecut2

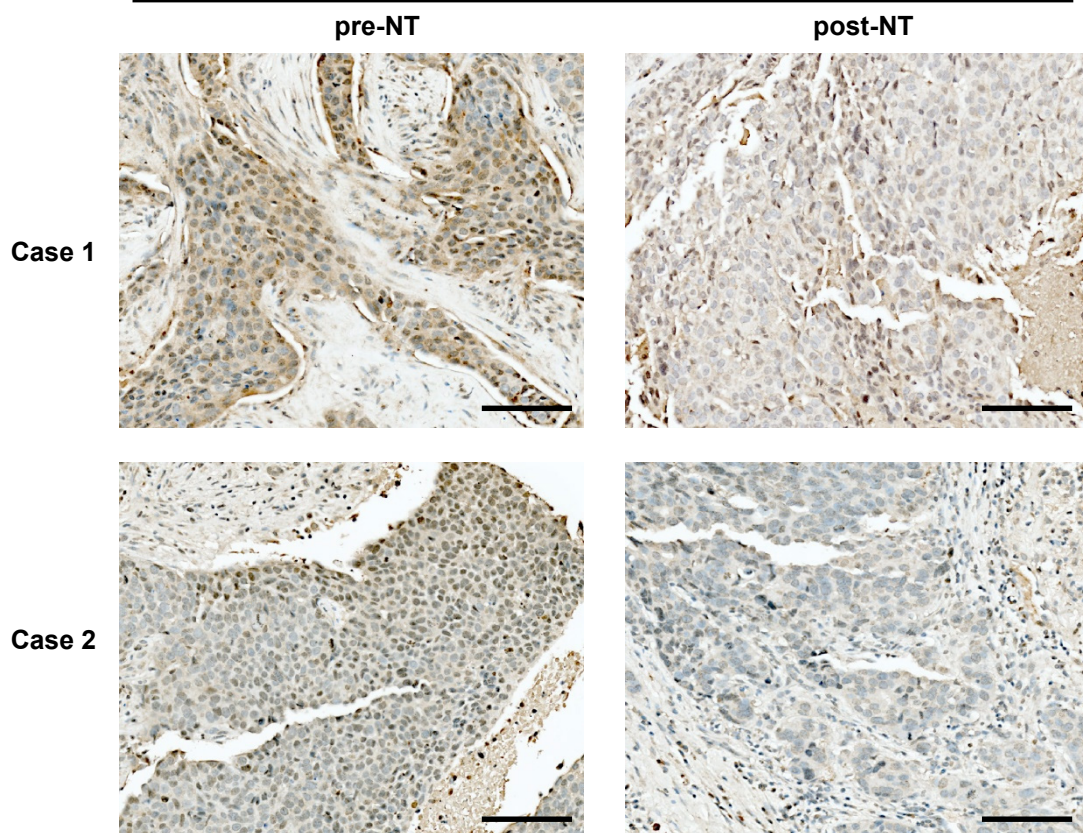


Fig. S6. Histological staining of tumor tissues. (A) MDA231 xenograft tumor tissues collected in Fig. 7A-E were analyzed by hematoxylin and eosin stain (H&E) and IHC using indicated antibodies. (B) IHC showing ONECUT2 expression levels in primary human breast tumors before and after NT. The staining scores were summarized in Fig. 7F. Representative images are shown. Scale bar = 100 μ m.