

Full uncut gels

Title: Exploration of group II metabotropic glutamate receptor modulation in mouse models of Rett syndrome and *MECP2* Duplication syndrome

Authors: Sheryl Anne D. Vermudez¹, Aditi Buch¹, Kelly Weiss¹, Rocco G. Gogliotti², and Colleen M. Niswender^{1,3,4,5*}

Affiliations: ¹Department of Pharmacology and Warren Center for Neuroscience Drug Discovery, Vanderbilt University, Nashville, TN 37232, USA

²Department of Molecular Pharmacology and Neuroscience, Loyola University Chicago, IL 60660, USA

³Vanderbilt Kennedy Center, Vanderbilt University, Nashville, TN 37232, USA

⁴Vanderbilt Institute of Chemical Biology, Vanderbilt University, Nashville, TN 37232, USA

⁵Vanderbilt Brain Institute, Vanderbilt University, Nashville, TN 37232, USA

***Corresponding author**

Colleen M. Niswender

12478C MRB IV

Vanderbilt University

Nashville, TN 37232

Office: (615) 343-4303

Fax: (615) 343-3088

Colleen.niswender@vanderbilt.edu

Declaration of Interest

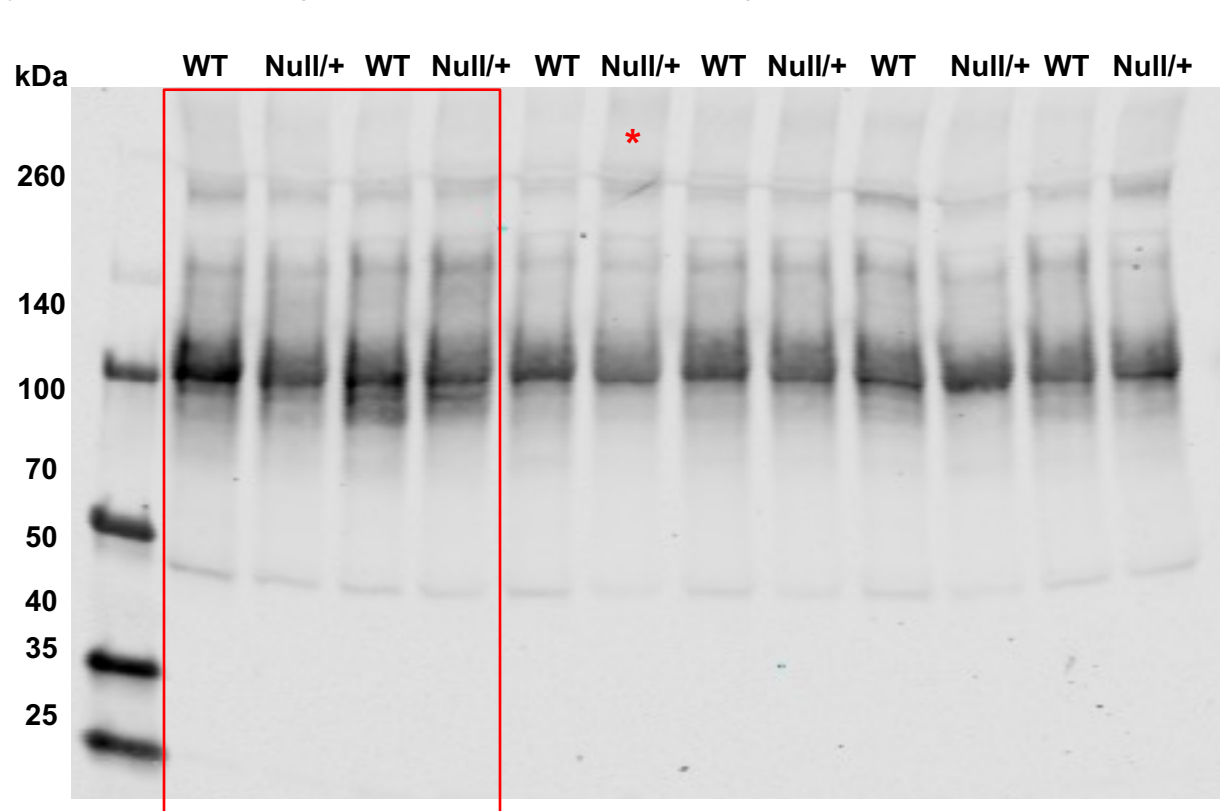
C.M.N. receives research support and licensing revenue from Boehringer-Ingelheim for the development of mGlu₃ ligands and is an inventor on multiple patents for mGlu receptor allosteric modulators.

Full unedited gel for Figure 1D (Quantification in Figure 1E)

Mouse line: *Mecp2*^{Null/+}

Brain Region: Cortex

Antibody: Mouse anti-mGlu₂ (1:1000, Abcam cat. no. ab15672)



WT (*Mecp2*^{+/+})

Null/+ (*Mecp2*^{Null/+})

< D (Dimer)

Figure 1D

*Artifact on band; sample excluded from quantification

Full unedited gel for Figure 1D (Quantification in Figure 1E)
Mouse line: *Mecp2*^{Null/+}
Brain Region: Cortex
Antibody: Mouse anti-Gapdh (1:1000, ThermoFisher cat. no. MA5-15738)

WT (*Mecp2*^{+/+})
Null/+ (*Mecp2*^{Null/+})

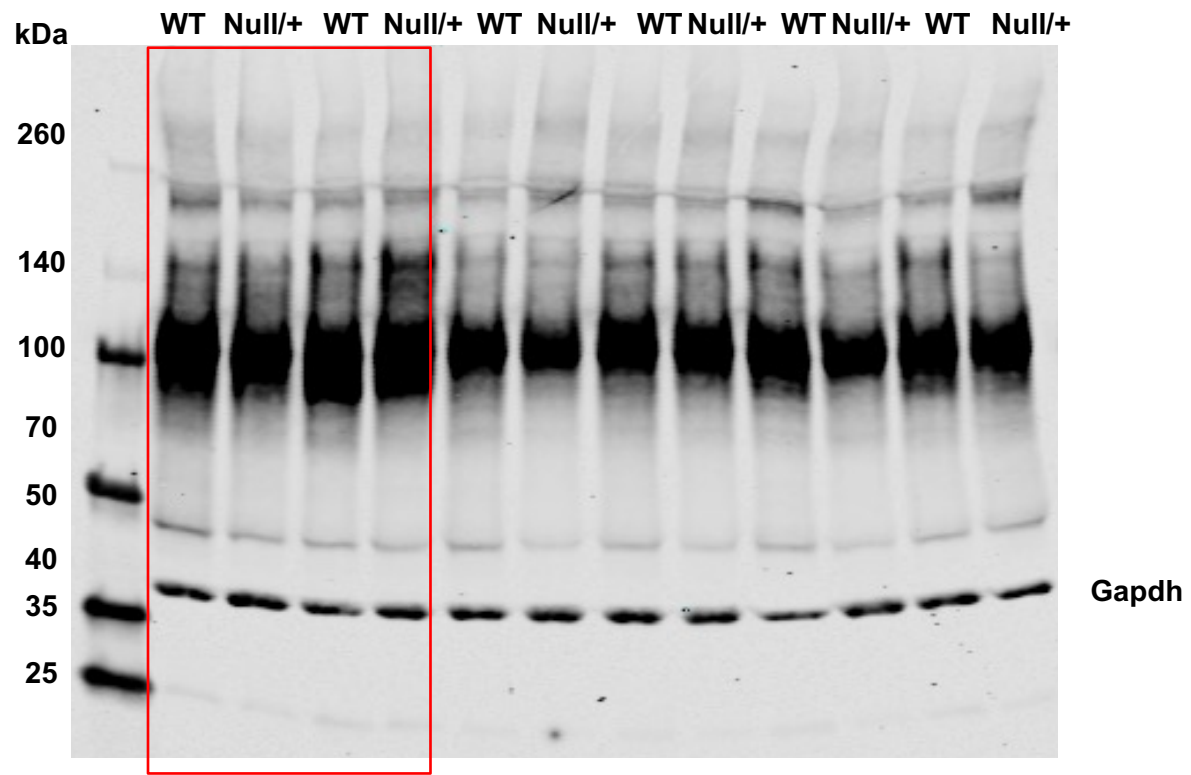
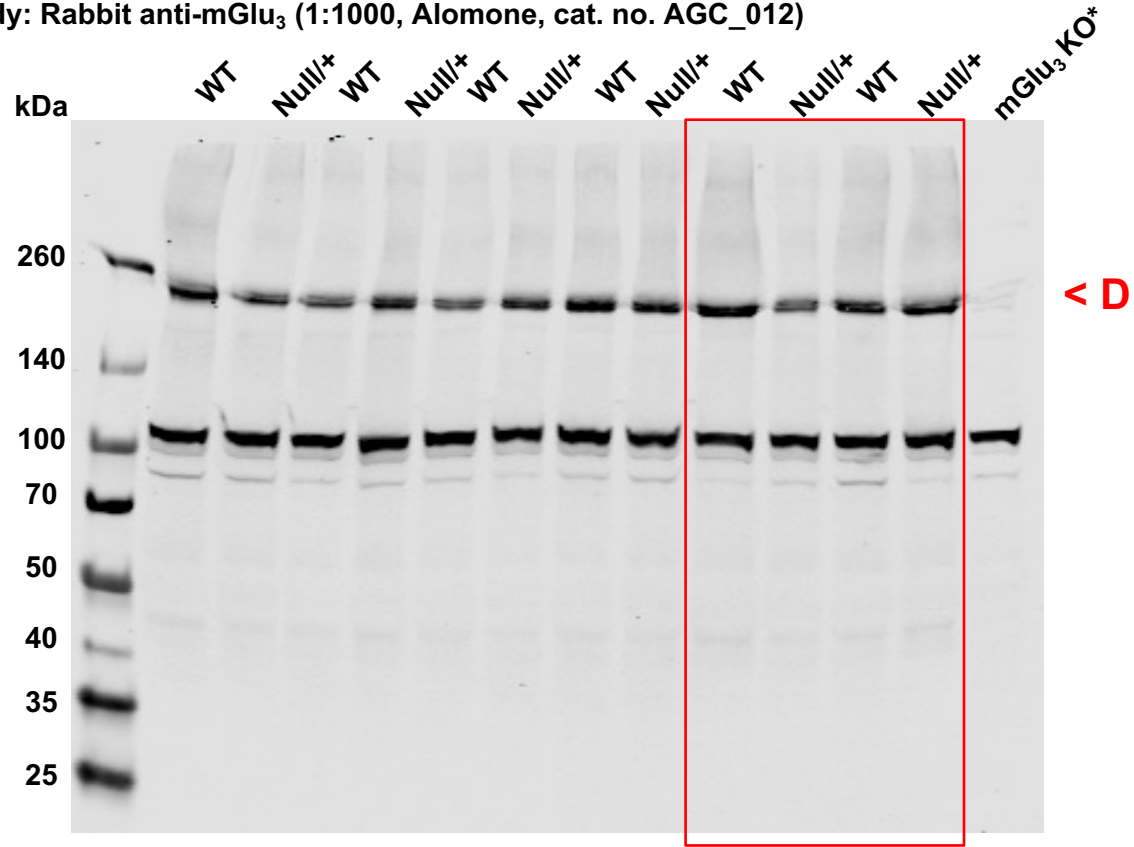


Figure 1D

Full unedited gel for Figure 1D (Quantification in Figure 1E)
Mouse line: *Mecp2*^{Null/+}
Brain Region: Cortex
Antibody: Rabbit anti-mGlu₃ (1:1000, Alomone, cat. no. AGC_012)



WT (*Mecp2*^{+/+})
Null/+ (*Mecp2*^{Null/+})

< D (Dimer)

*mGlu₃ KO (knockout) mouse
previously characterized in
Dogra et. al., 2021, Biol.
Psychiatry

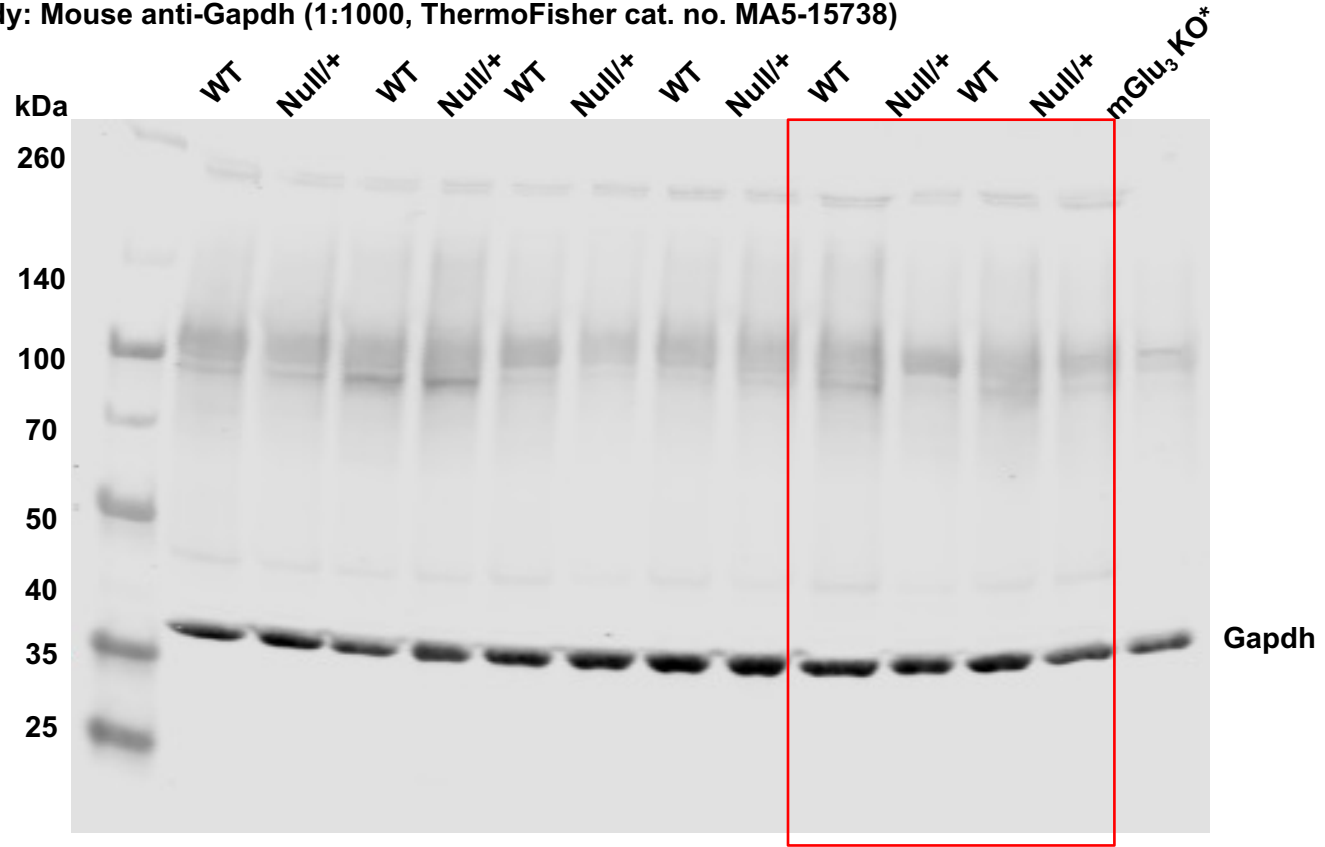
Figure 1D

Full unedited gel for Figure 1D (Quantification in Figure 1E)

Mouse line: *Mecp2*^{Null/+}

Brain Region: Cortex

Antibody: Mouse anti-Gapdh (1:1000, ThermoFisher cat. no. MA5-15738)



WT (*Mecp2*^{+/+})
Null/+ (*Mecp2*^{Null/+})

*mGlu₃ KO (knockout) mouse
previously characterized in
Dogra et. al., 2021, Biol.
Psychiatry

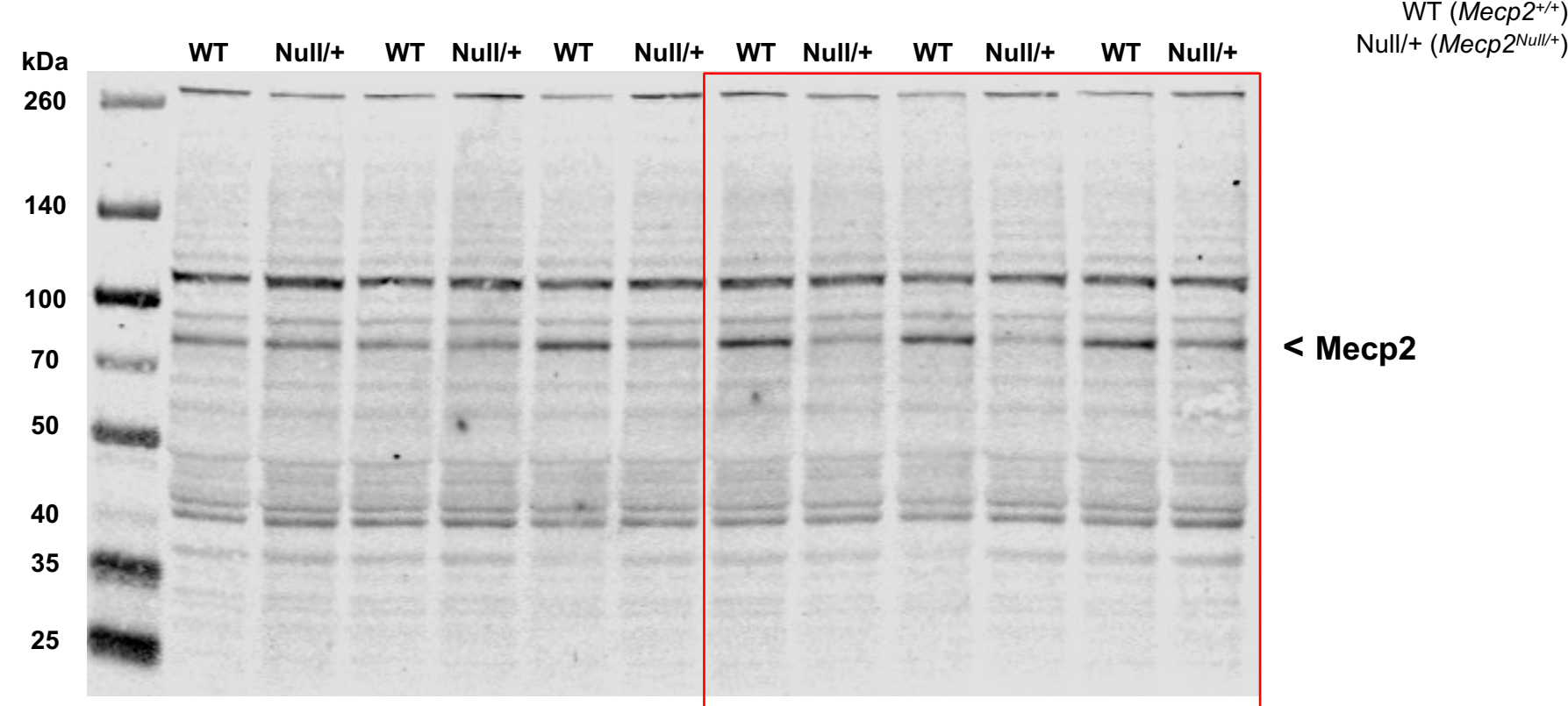
Figure 1D

Full unedited gel for Supplementary Figure 1A (Quantification in Supplementary Figure 1B)

Mouse line: *Mecp2*^{Null/+}

Brain Region: Hippocampus

Antibody: Rabbit anti-MeCP2 (1:1000, Millipore, cat. no. 07-013)



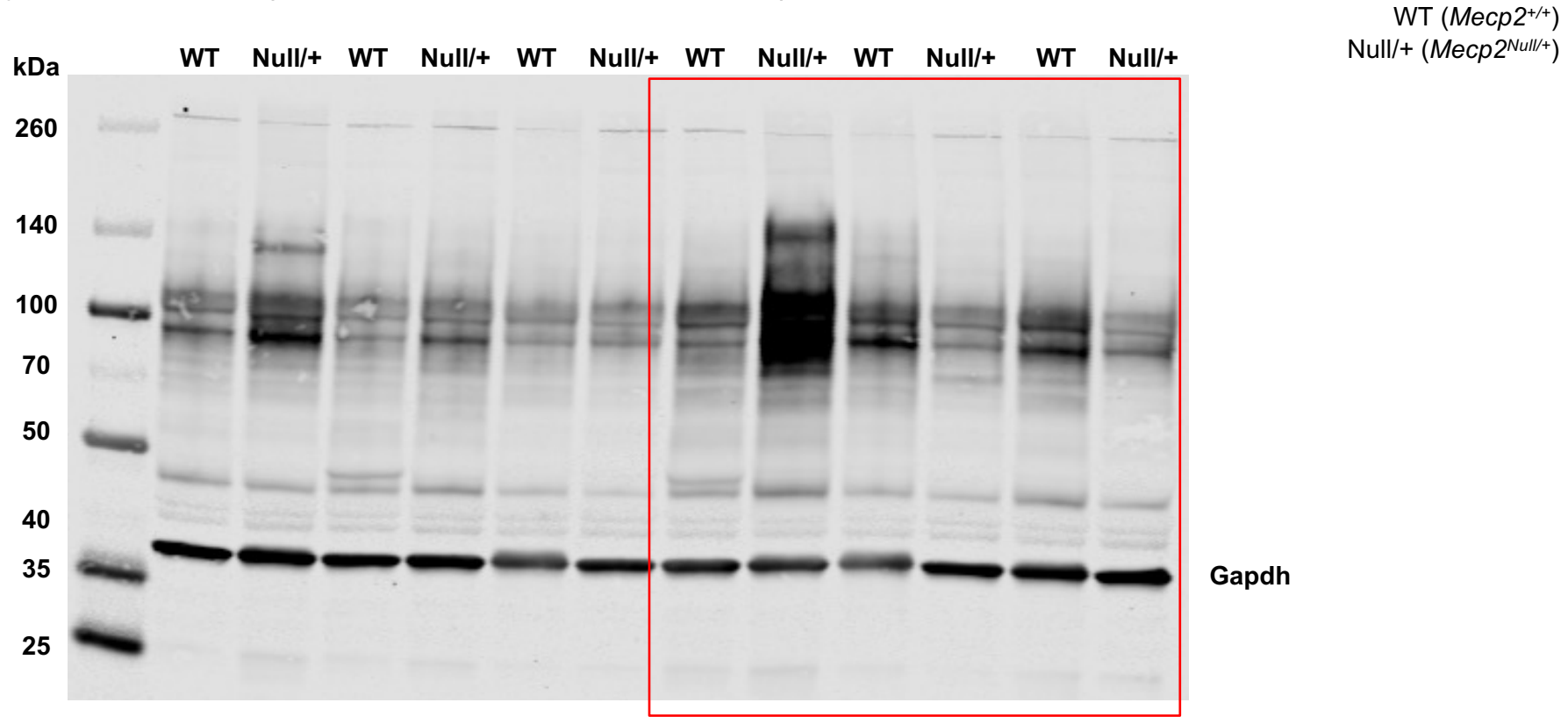
Supplementary Figure 1A

Full unedited gel for Supplementary Figure 1A (Quantification in Supplementary Figure 1B)

Mouse line: *Mecp2*^{Null/+}

Brain Region: Hippocampus

Antibody: Mouse anti-Gapdh (1:1000, ThermoFisher cat. no. MA5-15738)



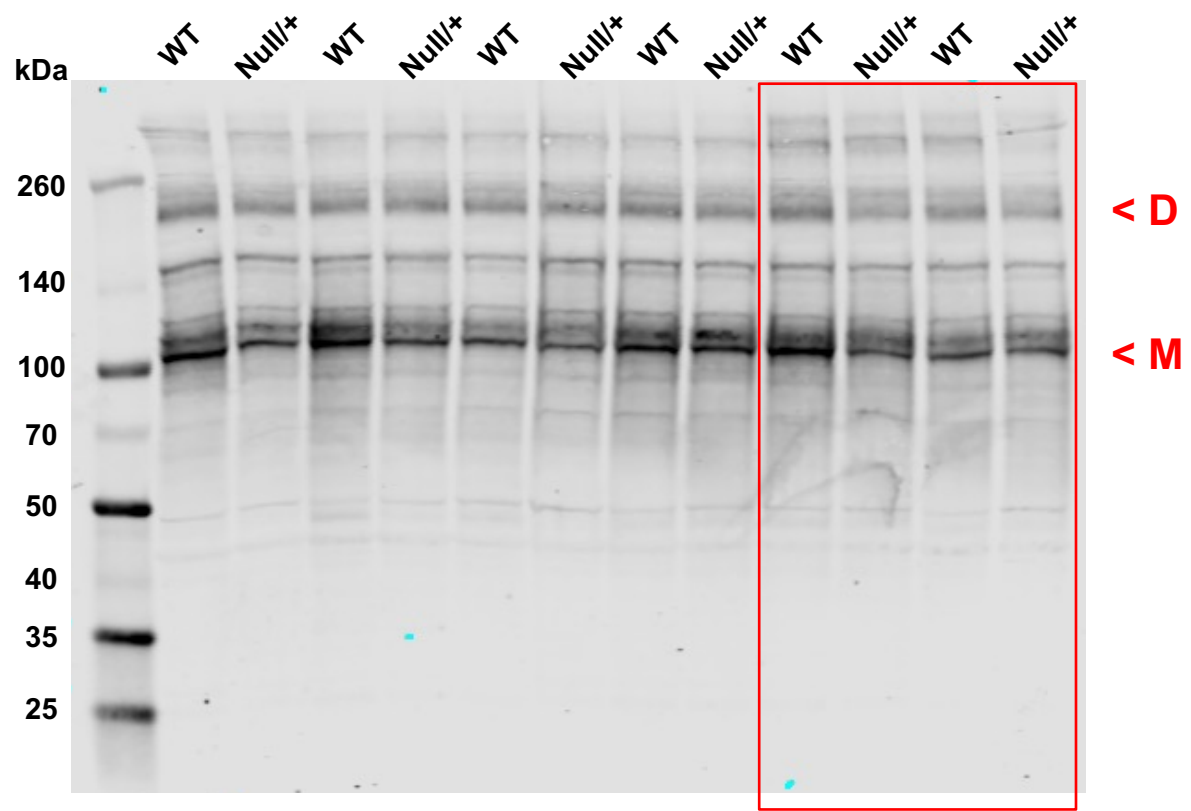
Supplementary Figure 1A

Full unedited gel for Figure 1F (Quantification in Figure 1G)

Mouse line: *Mecp2*^{Null/+}

Brain Region: Hippocampus

Antibody: Mouse anti-mGlu₂ (1:1000, Abcam cat. no. ab15672)



WT (*Mecp2*^{+/+})
Null/+ (*Mecp2*^{Null/+})

< D (Dimer)
< M (Monomer)

Figure 1F

Full unedited gel for Figure 1F (Quantification in Figure 1G)

Mouse line: *Mecp2*^{Null/+}

Brain Region: Hippocampus

Antibody: Mouse anti-Gapdh (1:1000, ThermoFisher cat. no. MA5-15738)

WT (*Mecp2*^{+/+})
Null/+ (*Mecp2*^{Null/+})

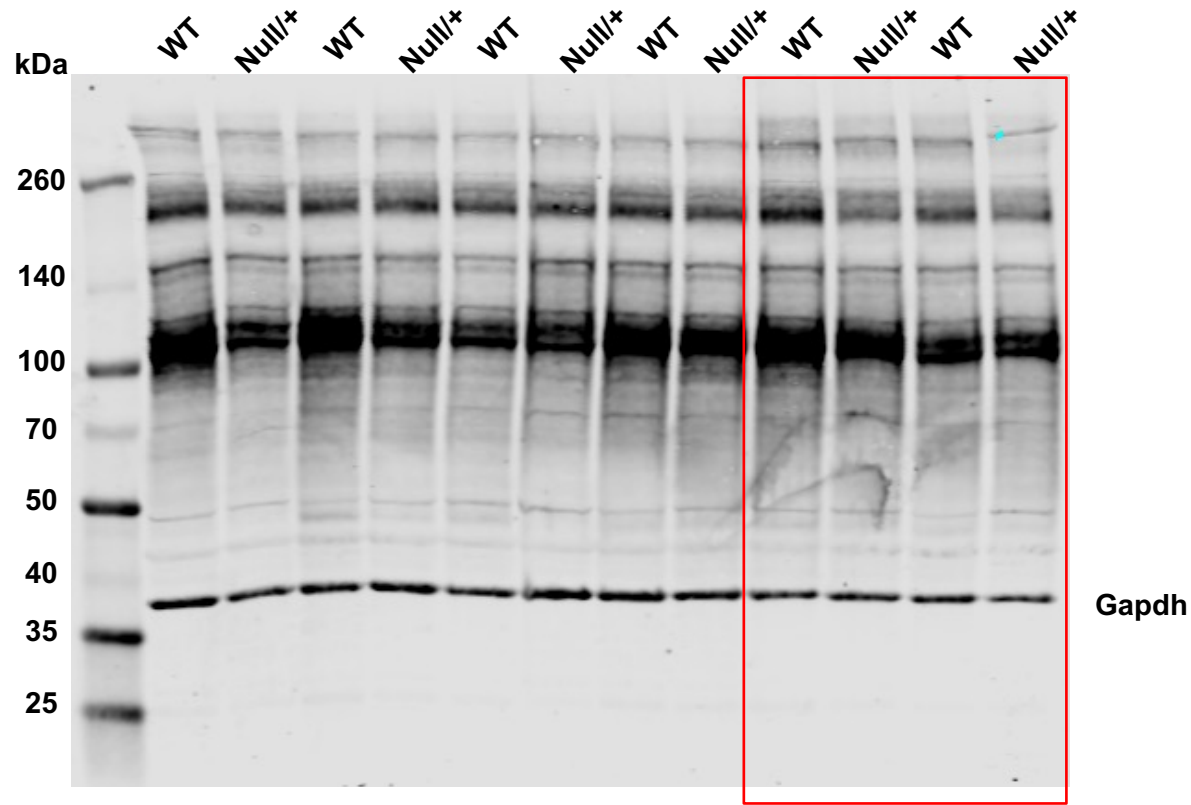
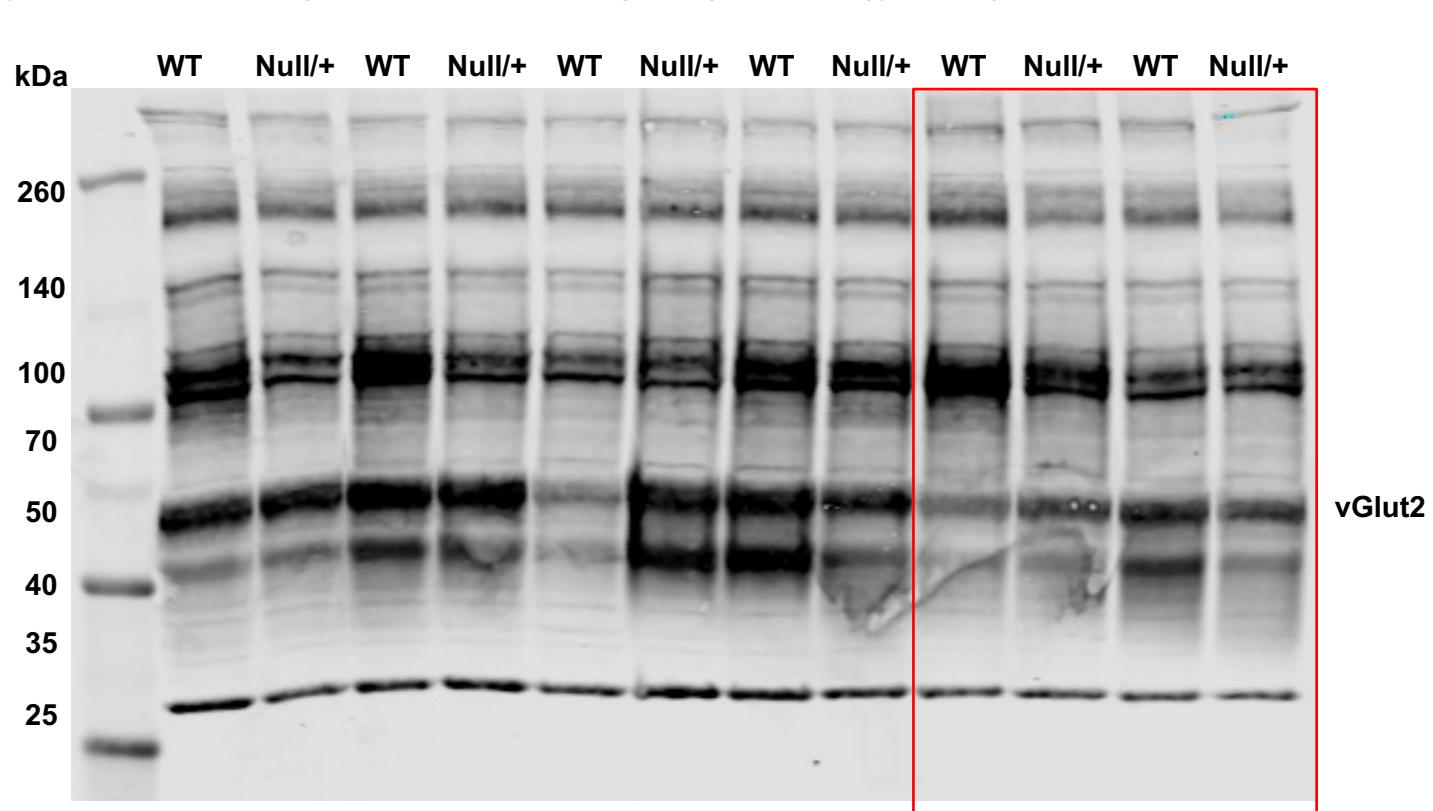


Figure 1F

Full unedited gel for Figure 1F (Quantification in Figure 1G)
Mouse line: *Mecp2*^{Null/+}
Brain Region: Hippocampus
Antibody: Rabbit anti-vGlut2 (1:1000, cat. no. Cell Signaling Technology, 71555)



WT (*Mecp2*^{+/+})
Null/+ (*Mecp2*^{Null/+})

Figure 1F

Full unedited gel for Figure 1F (Quantification in Figure 1G)
Mouse line: *Mecp2*^{Null/+}
Brain Region: Hippocampus
Antibody: Rabbit anti-mGlu₃ (1:1000, Alomone, cat. no. AGC_012)

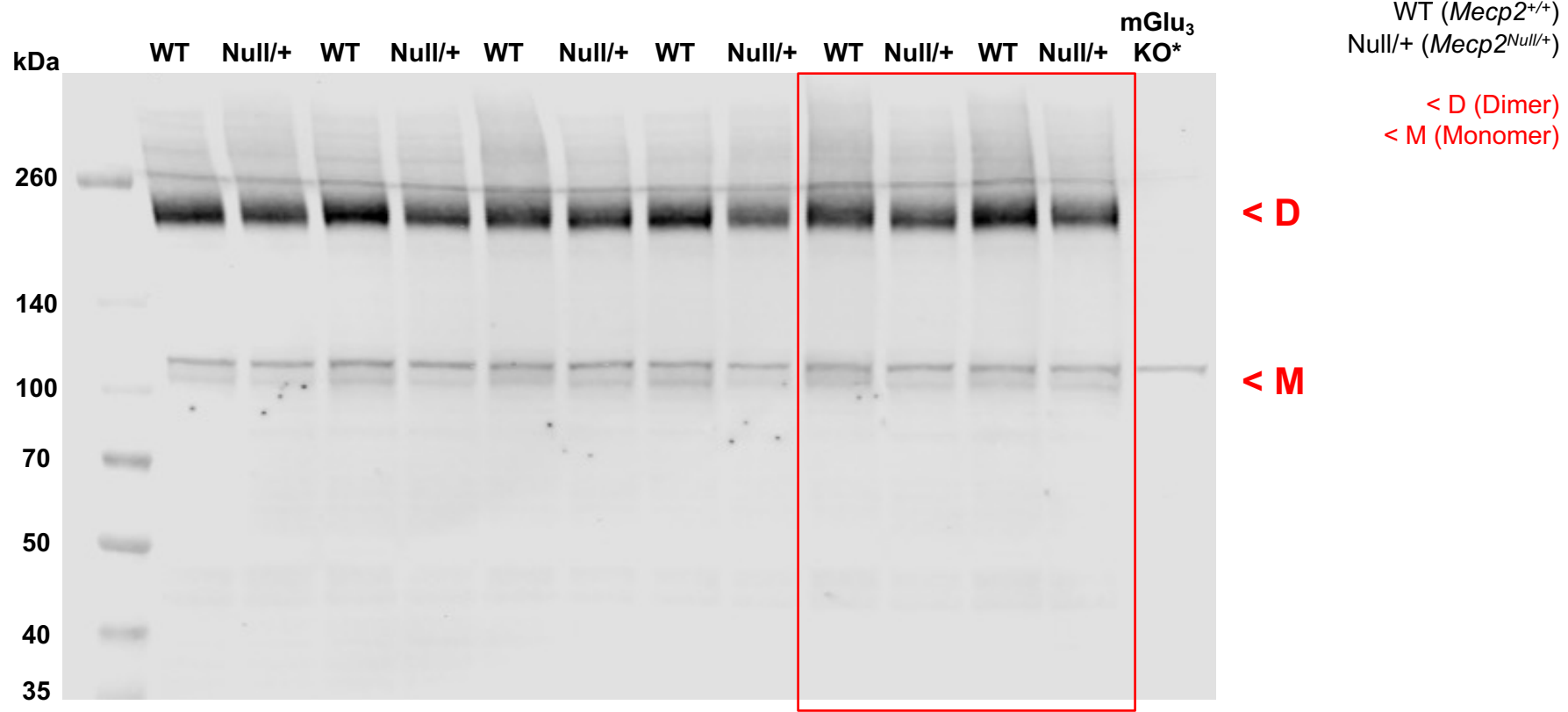
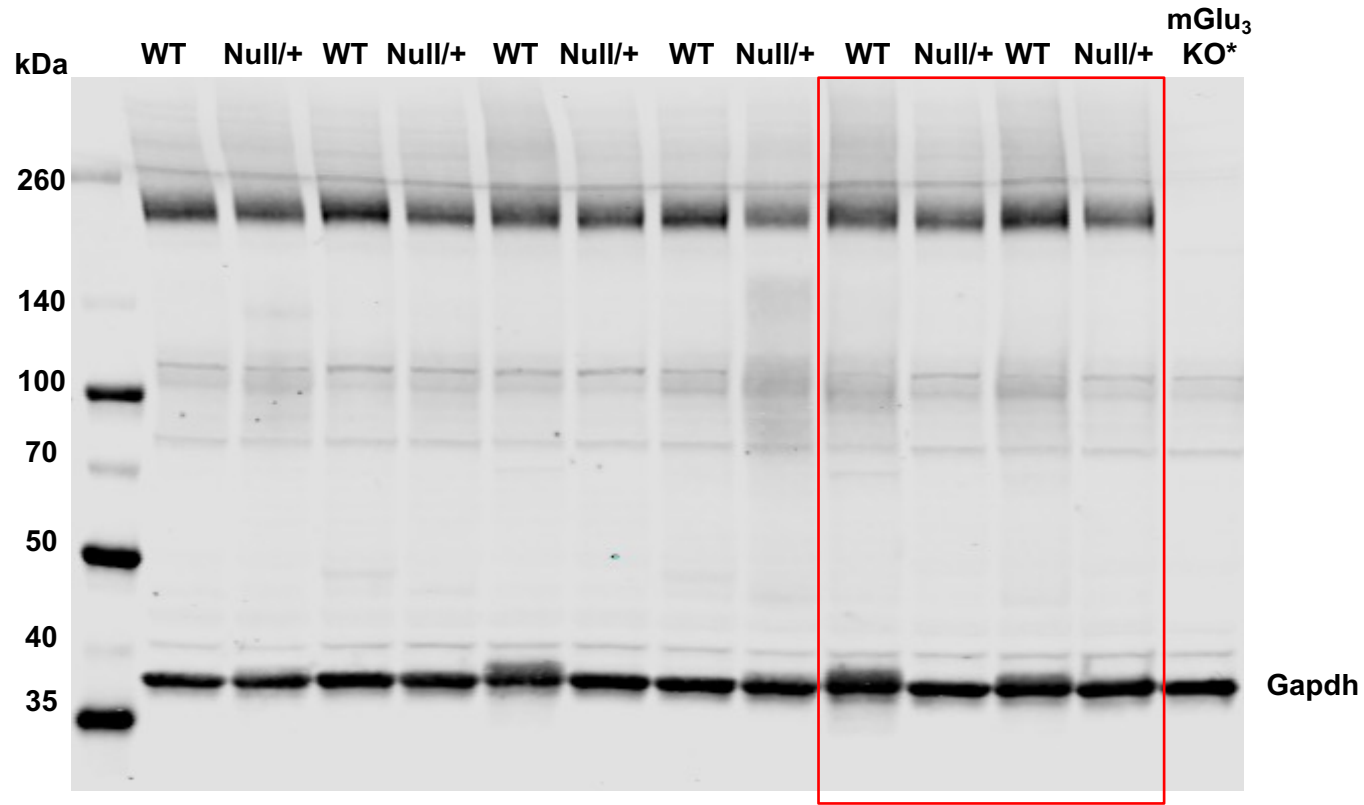


Figure 1F

*mGlu₃ KO (knockout) mouse previously characterized in Dogra et. al., 2021, Biol. Psychiatry

Full unedited gel for Figure 1F (Quantification in Figure 1G)
Mouse line: *Mecp2*^{Null/+}
Brain Region: Hippocampus
Antibody: Mouse anti-Gapdh (1:1000, ThermoFisher cat. no. MA5-15738)



WT (*Mecp2*^{+/+})
Null/+ (*Mecp2*^{Null/+})

Figure 1F

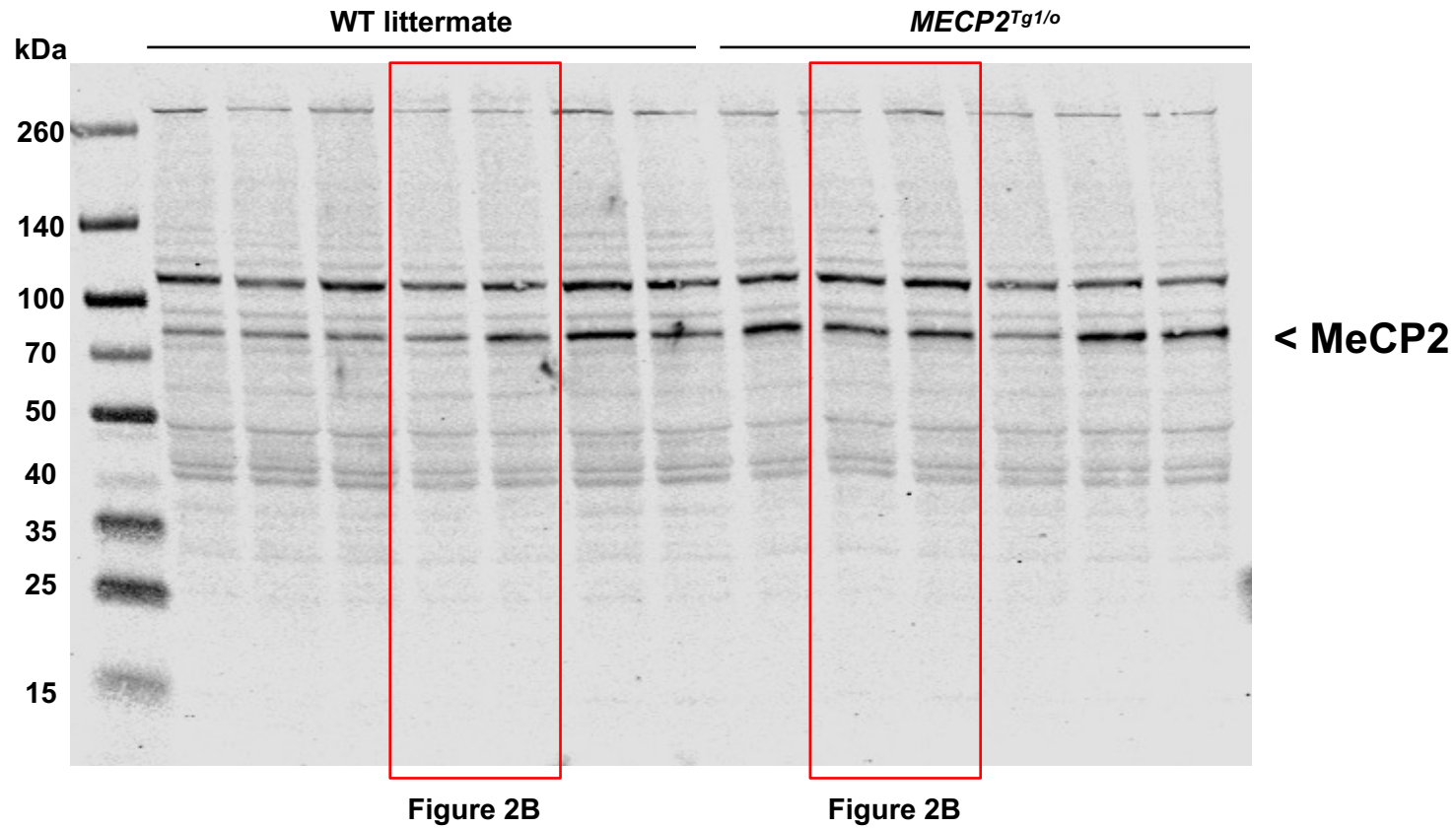
*mGlu₃ KO (knockout) mouse previously characterized in Dogra et. al., 2021, Biol. Psychiatry

Full unedited gel for Figure 2B (Quantification in Figure 2C)

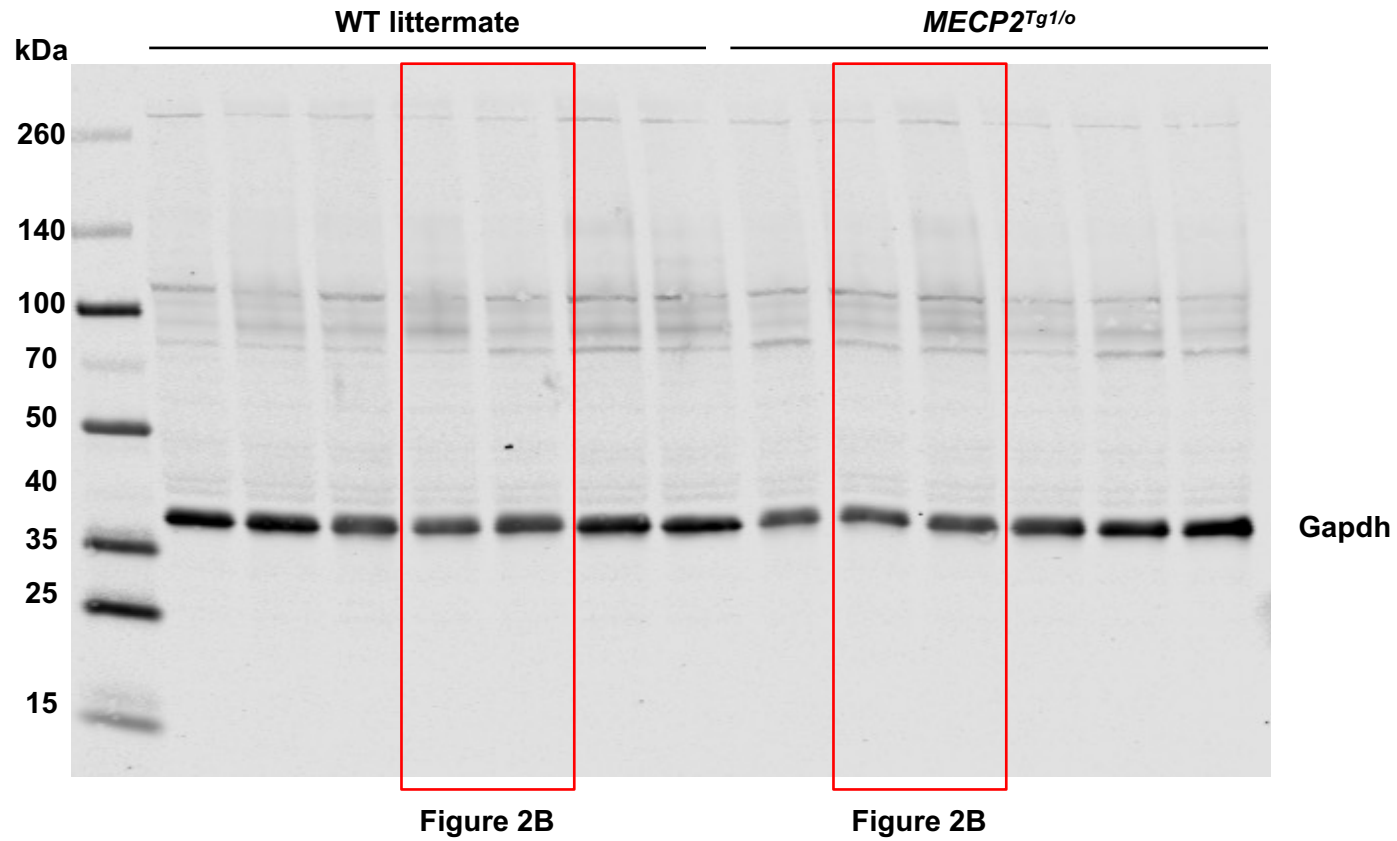
Mouse line: *MECP2^{Tg1/o}*

Brain Region: Hippocampus

Antibody: Rabbit anti-MeCP2 (1:1000, Millipore, cat. no. 07-013)



Full unedited gel for Figure 2B (Quantification in Figure 2C)
Mouse line: *MECP2^{Tg1/o}*
Brain Region: Hippocampus
Antibody: Mouse anti-Gapdh (1:1000, ThermoFisher cat. no. MA5-15738)



Full unedited gel for Figure 2B (Quantification in Figure 2C)

Mouse line: *MECP2^{Tg1/o}*

Brain Region: Hippocampus

Antibody: Rabbit anti-vGlut2 (1:1000, cat. no. Cell Signaling Technology, 71555)

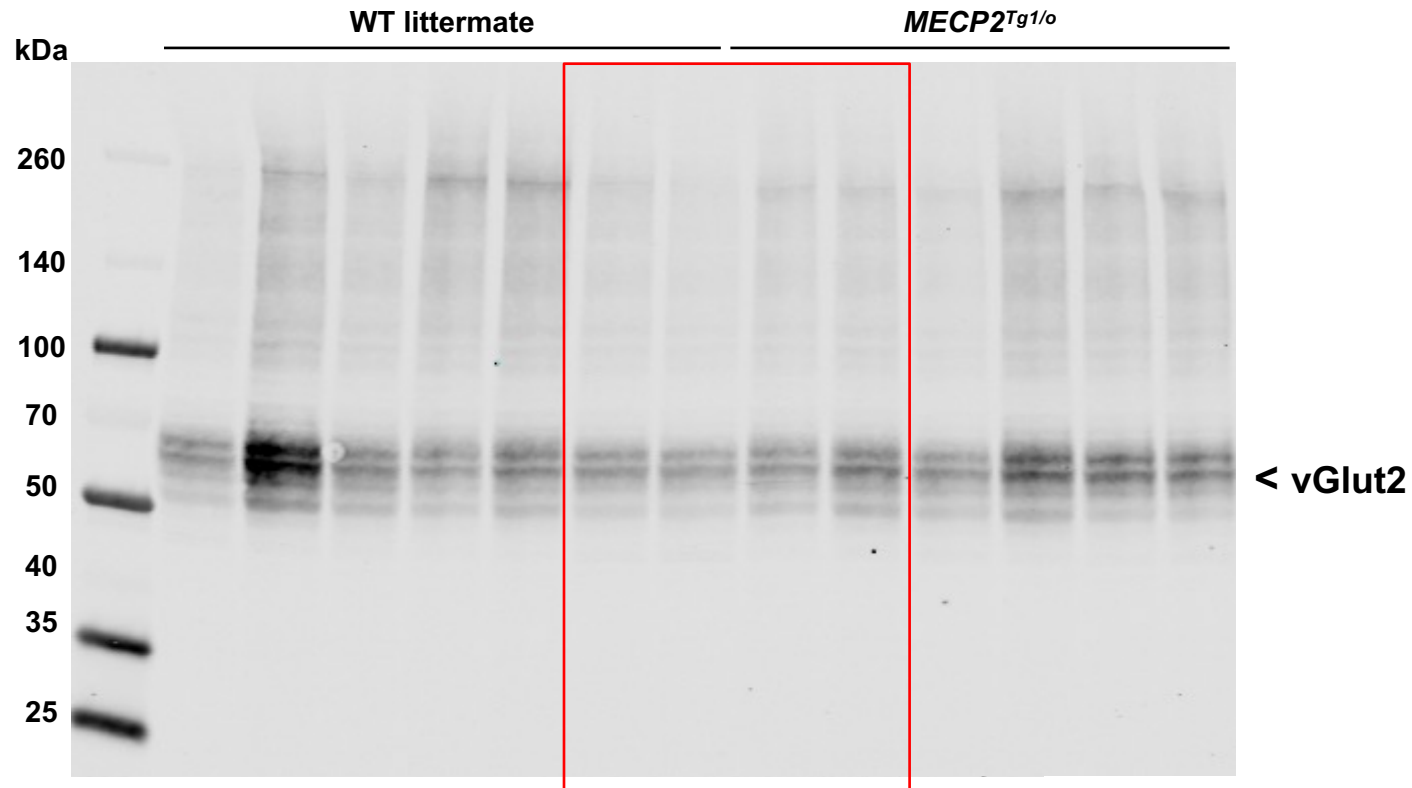


Figure 2B

Full unedited gel for Figure 2B (Quantification in Figure 2C)
Mouse line: *MECP2^{Tg1/o}*
Brain Region: Hippocampus
Antibody: Mouse anti-Gapdh (1:1000, ThermoFisher cat. no. MA5-15738)

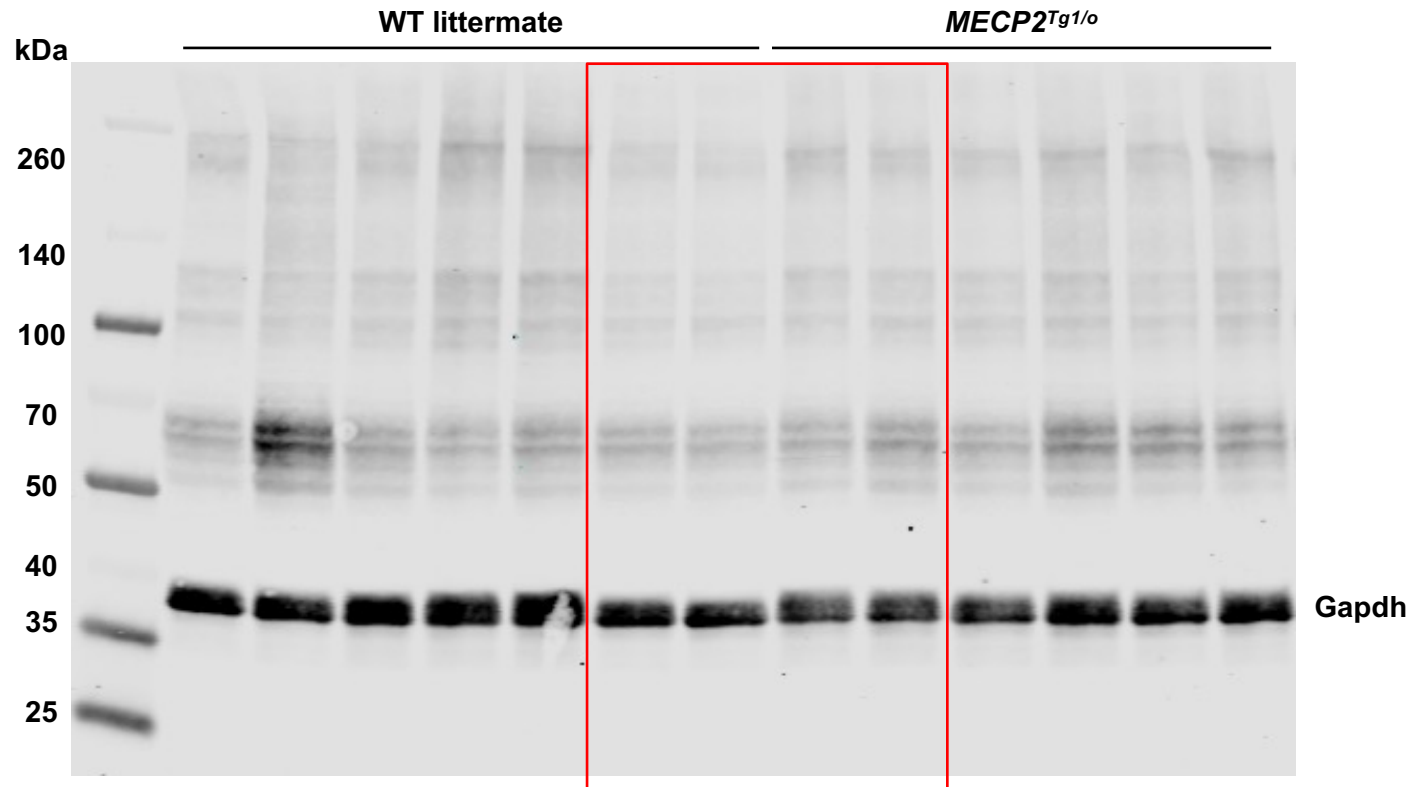
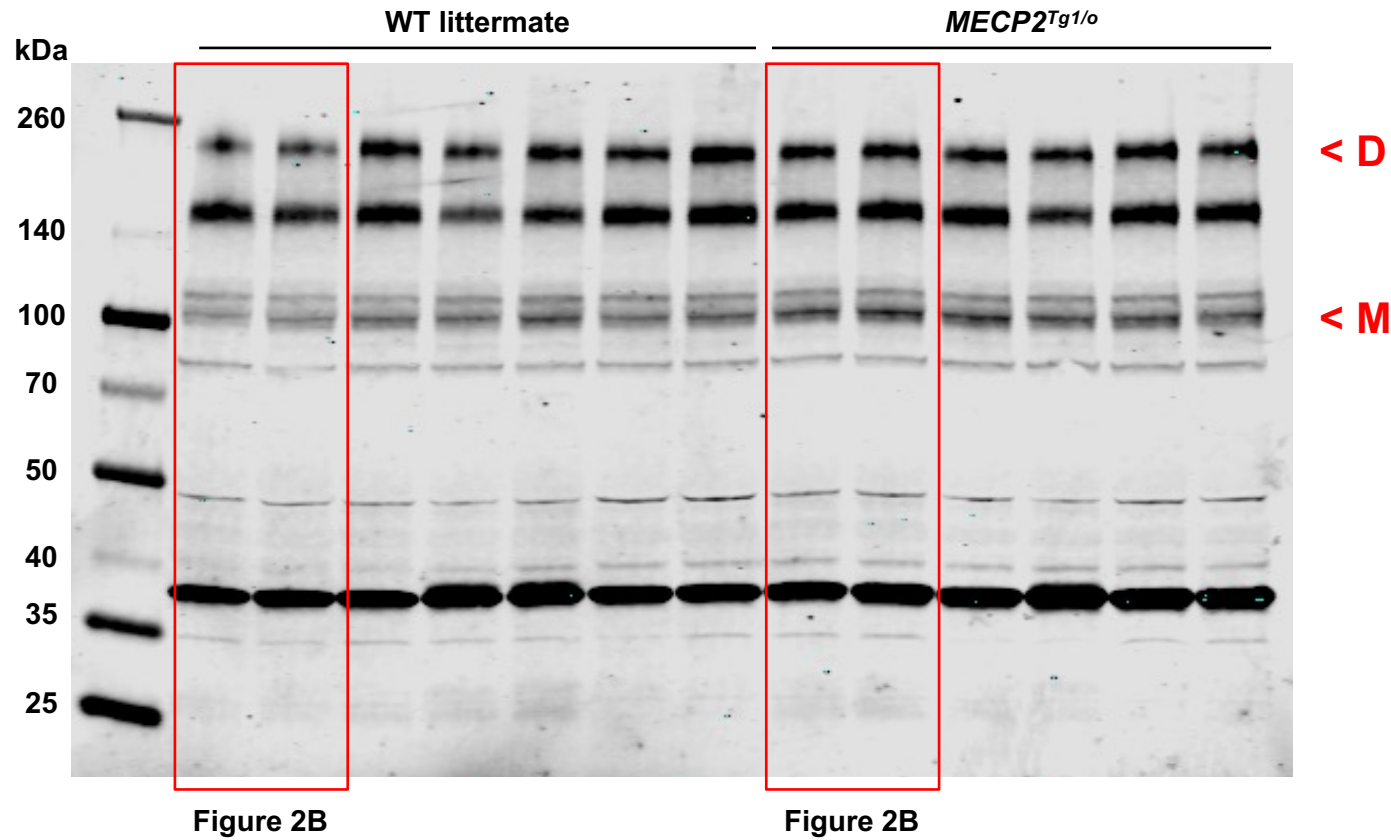
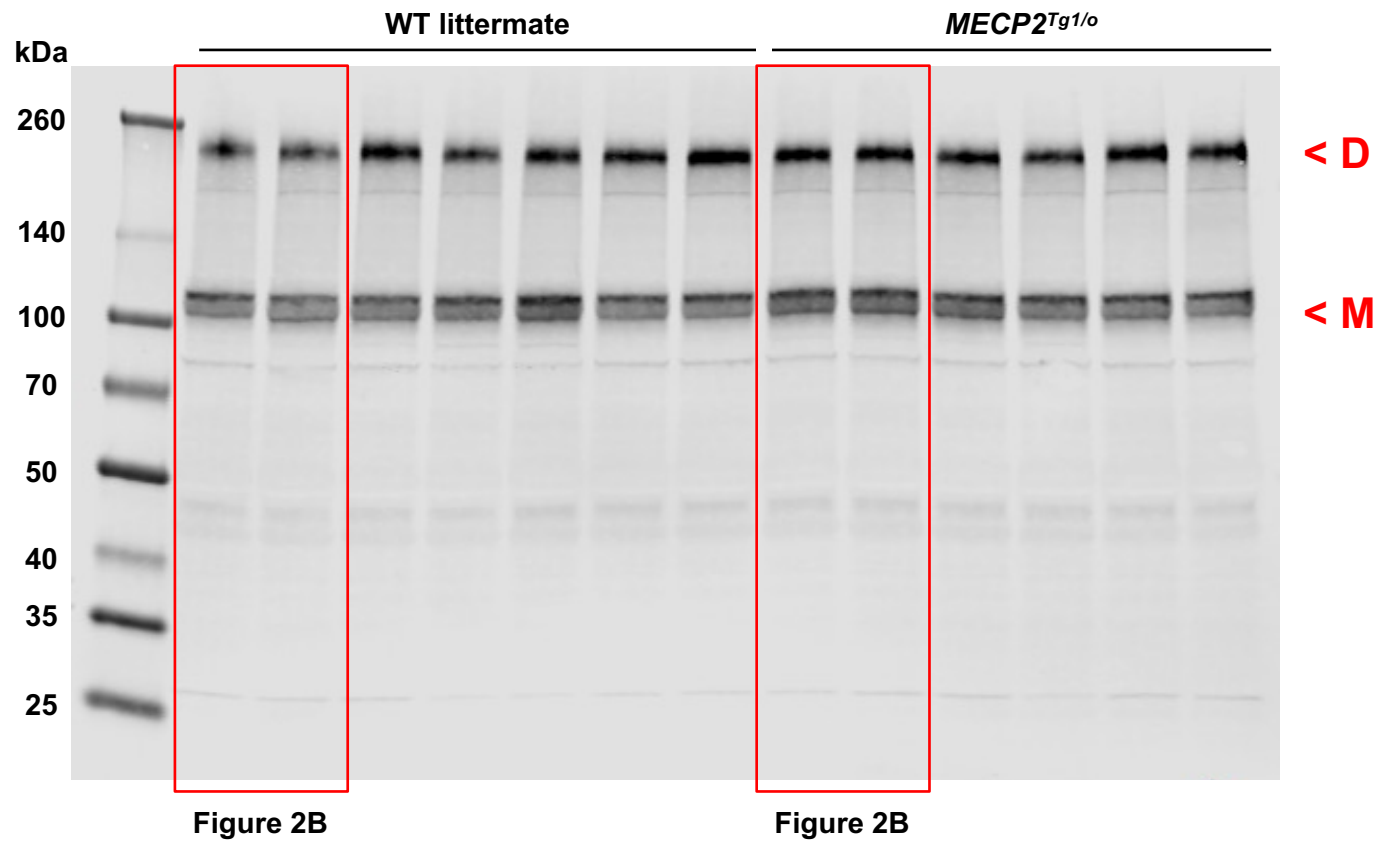


Figure 2B

Full unedited gel for Figure 2B (Quantification in Figure 2C)
Mouse line: *MECP2^{Tg1/o}*
Brain Region: Hippocampus
Antibody: Mouse anti-mGlu₂ (1:1000, Abcam cat. no. ab15672)



Full unedited gel for Figure 2B (Quantification in Figure 2C)
Mouse line: *MECP2^{Tg1/o}*
Brain Region: Hippocampus
Antibody: Rabbit anti-mGlu₃ (1:1000, Alomone, cat. no. AGC_012)



< D (Dimer)
< M (Monomer)

Full unedited gel for Figure 2B (Quantification in Figure 2C)
Mouse line: *MECP2^{Tg1/o}*
Brain Region: Hippocampus
Antibody: Mouse anti-Gapdh (1:1000, ThermoFisher cat. no. MA5-15738)

