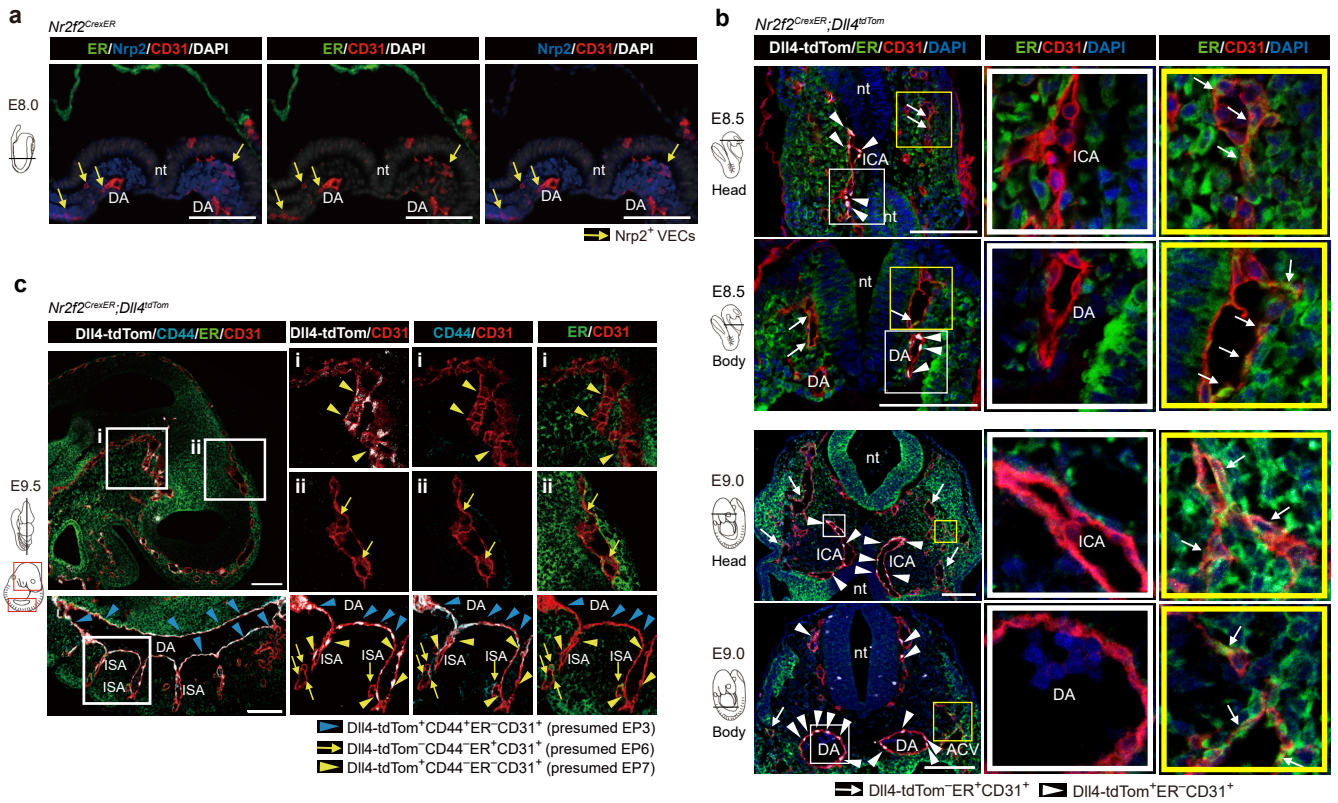


**Fig. S9**



**Fig. S9. Expression of Nr2f2-CrexER in mouse embryos.**

**a-c,** Representative immunostaining on cross sections (E8.0-E9.0) and sagittal sections (E9.5) of *Nr2f2-CrexER* and *Nr2f2-CrexER;Dll4-tdTomato* embryos as indicated. At E8.0 (a), expression of ER was not detected in the VECs, in contrast to that of *Nrp2* (arrows). From E8.5 to E9.5 (b-c), endothelial expression of ER (arrows) is complementary to that of *Dll4-tdTom* (arrowheads), in line with the presumed endogenous vascular *Nr2f2* expression. Images to the right show inserts at high magnification. The diagrams to the left indicate the positions of sections and imaging. nt, neural tube; DA, dorsal aorta; ICA, internal carotid artery; ISA, intersegmental artery; ACV, anterior cardinal vein. Scale bars, 100  $\mu$ m.