

Figure S1

Patients with indeterminate pulmonary nodules detected by LDCT

Plasma sample collection, clinical record and pathological examination

Included: 459

- Patients with IPNs detected by LDCT
- Patients without previous cancer history
- Underwent surgical resection
- Able to collect blood samples and clinical information
- Signed written consents

Shanghai Pulmonary Hospital
4/2019 - 5/2019

Benign (n = 20)
Malignant (n = 179)

Shanghai Pulmonary Hospital
9/2019 - 10/2019

Benign (n = 35)
Malignant (n = 225)

Excluded: 350

- Hemolysis > 3 (107)
- Non-LUAD (65)
- Ratio of Benign : Malignant set to 1:2 (155)
- Failed in sequencing library construction (23)

Training cohort

Benign (n = 17)
Malignant (n = 30)

Testing cohort

Benign (n = 24)
Malignant (n = 38)

Figure S2

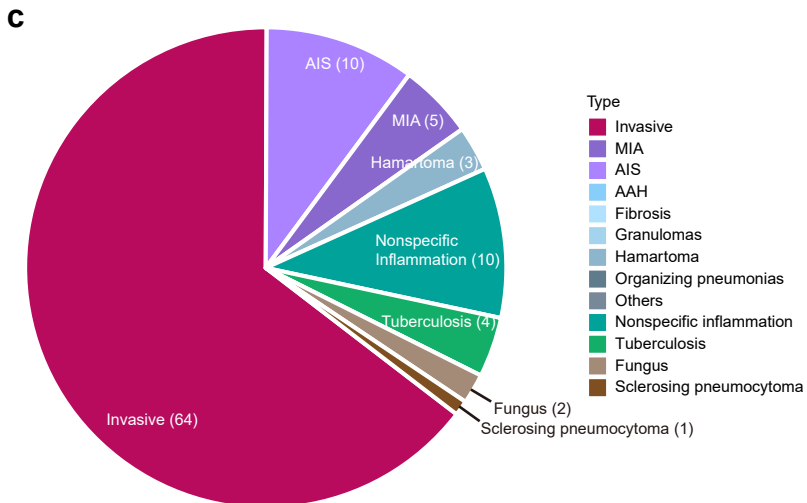
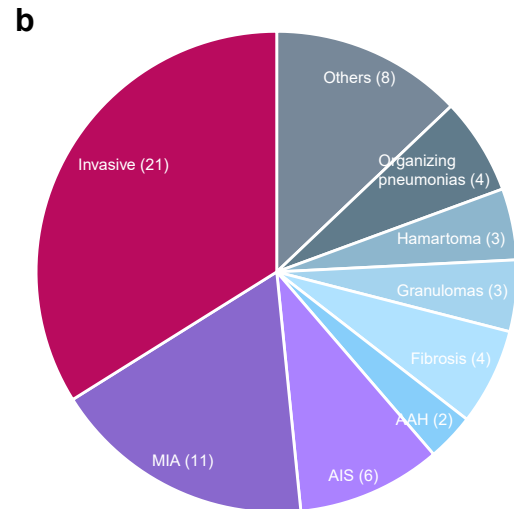
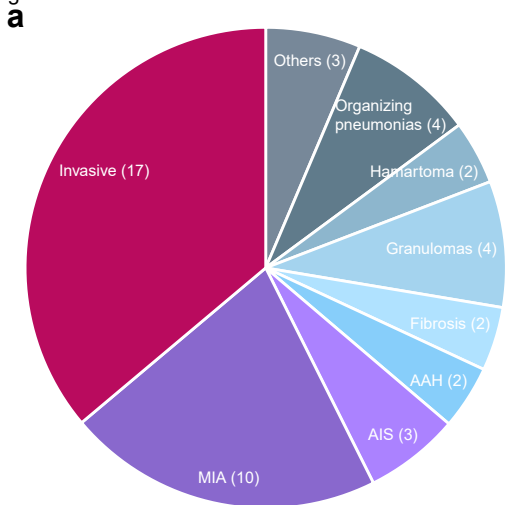
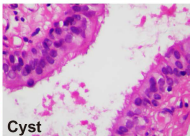
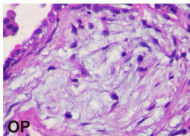
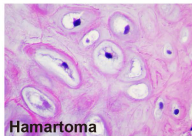
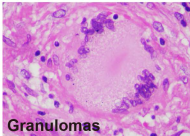
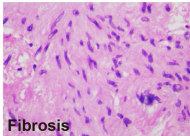
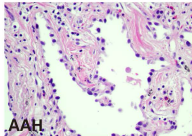


Figure S3

Benign



Malignant

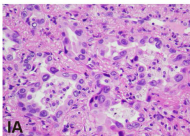
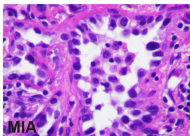
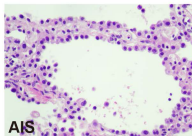


Figure S4

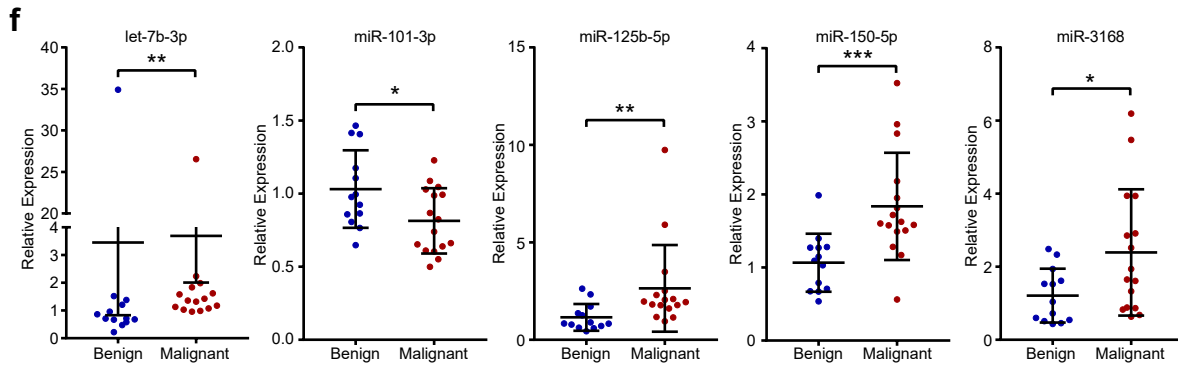
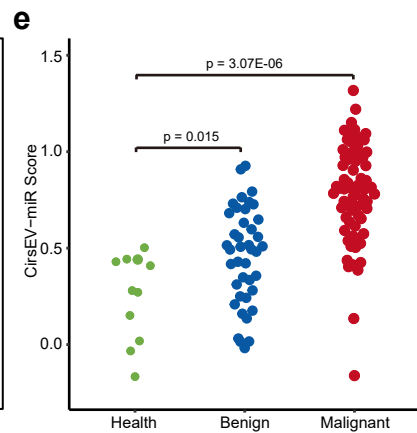
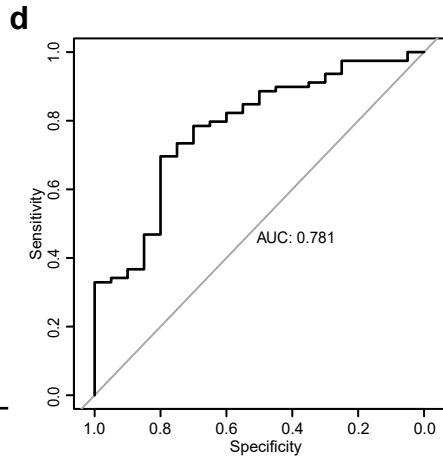
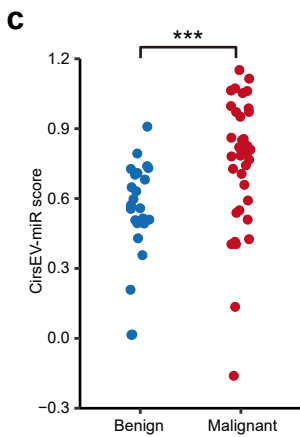
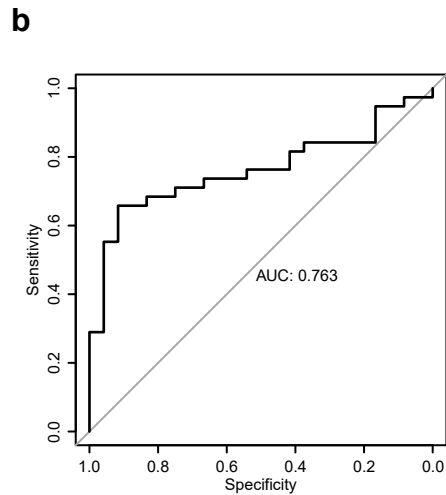
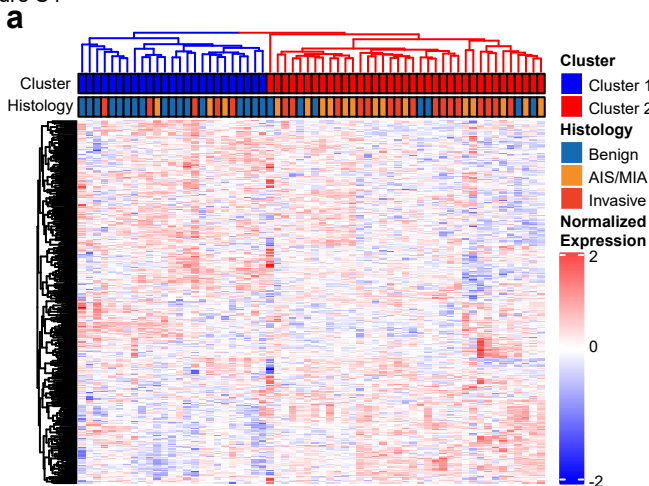
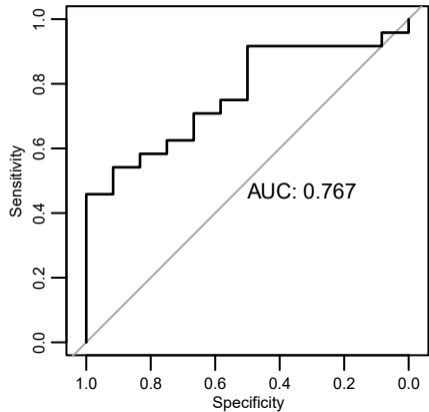


Figure S5

a



b

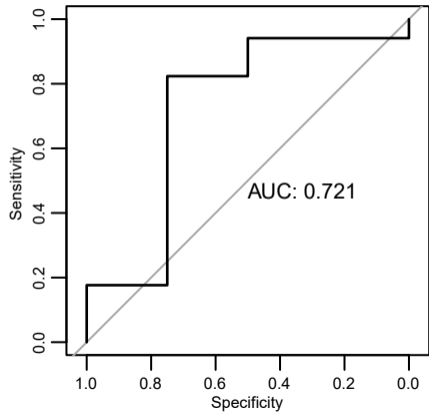


Table S1. Classifiers constructed from six identified DEMs.

| Classifier | Elements |
|-------------------|--|
| One-miRNA | let-7b-3p |
| Two-miRNA | let-7b-3p, miR-125b-5p |
| Three-miRNA | let-7b-3p, miR-125b-5p, miR-197-3p |
| Four-miRNA | let-7b-3p, miR-125b-5p, miR-197-3p, miR-150-5p |
| Five-miRNA | let-7b-3p, miR-125b-5p, miR-197-3p, miR-150-5p, miR-3168 |
| Six-miRNA | let-7b-3p, miR-125b-5p, miR-197-3p, miR-150-5p, miR-3168, miR-101-3p |

Table S2. Performance of classifiers in the training and test cohorts.

| Classifier | Training cohort | | | Testing cohort | | |
|-------------|-----------------|-------------|-------------|----------------|-------------|-------------|
| | AUC | Sensitivity | Specificity | AUC | Sensitivity | Specificity |
| One-miRNA | 0.875 | 0.667 | 1.000 | 0.680 | 0.737 | 0.583 |
| Two-miRNA | 0.886 | 0.933 | 0.824 | 0.754 | 0.632 | 0.833 |
| Three-miRNA | 0.892 | 0.800 | 0.882 | 0.773 | 0.658 | 0.833 |
| Four-miRNA | 0.882 | 0.800 | 0.882 | 0.720 | 0.684 | 0.792 |
| Five-miRNA | 0.904 | 0.800 | 0.941 | 0.743 | 0.632 | 0.917 |
| Six-miRNA | 0.794 | 0.833 | 0.706 | 0.729 | 0.684 | 0.833 |
| CirsEV-miR | 0.920 | 0.900 | 0.882 | 0.763 | 0.658 | 0.917 |

Table S3. The five sEV-miRNAs and their corresponding coefficient in the CirsEV-miR model.

| | |
|-------------|-------------|
| Intercept | -1.75739839 |
| let-7b-3p | 0.28001472 |
| miR-101-3p | -0.09222138 |
| miR-125b-5p | 0.12801717 |
| miR-150-5p | 0.05133272 |
| miR-3168 | 0.06252532 |

Table S4. Target genes of the five sEV-miRNAs

| Gene Name | Gene Ensembl id | Tarbase Methods |
|-----------|-----------------|-----------------|
| SLK | ENSG00000065613 | HITS-CLIP |
| IRS2 | ENSG00000185950 | HITS-CLIP |
| BRAF | ENSG00000157764 | HITS-CLIP |
| POU2F1 | ENSG00000143190 | PAR-CLIP |
| CNOT6 | ENSG00000113300 | HITS-CLIP |
| ASAH1 | ENSG00000104763 | HITS-CLIP |
| GSK3B | ENSG00000082701 | Multiple |
| C5orf30 | ENSG00000181751 | HITS-CLIP |
| CCAR2 | ENSG00000158941 | HITS-CLIP |
| ERBB2IP | ENSG00000112851 | HITS-CLIP |
| TOB2 | ENSG00000183864 | HITS-CLIP |
| LEPROTL1 | ENSG00000104660 | HITS-CLIP |
| FEM1B | ENSG00000169018 | HITS-CLIP |
| TROVE2 | ENSG00000116747 | HITS-CLIP |
| ZNF273 | ENSG00000198039 | Multiple |
| ZNF616 | ENSG00000204611 | HITS-CLIP |
| TTYH3 | ENSG00000136295 | HITS-CLIP |
| ITGB1 | ENSG00000150093 | HITS-CLIP |
| YAP1 | ENSG00000137693 | Multiple |
| WASL | ENSG00000106299 | HITS-CLIP |
| CDS2 | ENSG00000101290 | HITS-CLIP |
| ANGEL2 | ENSG00000174606 | HITS-CLIP |
| STXBP5L | ENSG00000145087 | HITS-CLIP |
| RHOBTB3 | ENSG00000164292 | PAR-CLIP |
| PTPLB | ENSG00000206527 | HITS-CLIP |
| NUCKS1 | ENSG00000069275 | HITS-CLIP |
| TPM1 | ENSG00000140416 | HITS-CLIP |
| USP25 | ENSG00000155313 | HITS-CLIP |
| KBTBD8 | ENSG00000163376 | HITS-CLIP |
| MGAT5 | ENSG00000152127 | HITS-CLIP |
| ADORA2B | ENSG00000170425 | HITS-CLIP |
| CD59 | ENSG00000085063 | HITS-CLIP |
| ELK4 | ENSG00000158711 | HITS-CLIP |
| RAI1 | ENSG00000108557 | HITS-CLIP |
| NUP153 | ENSG00000124789 | HITS-CLIP |
| ARF3 | ENSG00000134287 | HITS-CLIP |
| THBS1 | ENSG00000137801 | Multiple |
| STOM | ENSG00000148175 | Multiple |
| LGR4 | ENSG00000205213 | HITS-CLIP |
| ANKRD52 | ENSG00000139645 | HITS-CLIP |
| LRRC8B | ENSG00000197147 | HITS-CLIP |

| | | |
|----------|-----------------|-----------|
| PAFAH1B1 | ENSG0000007168 | HITS-CLIP |
| NAP1L1 | ENSG00000187109 | HITS-CLIP |
| ZDHHC20 | ENSG00000180776 | HITS-CLIP |
| TMEM135 | ENSG00000166575 | HITS-CLIP |
| ALDH1A3 | ENSG00000184254 | HITS-CLIP |
| RABGAP1 | ENSG00000011454 | HITS-CLIP |
| TTC33 | ENSG00000113638 | HITS-CLIP |
| ARPP19 | ENSG00000128989 | HITS-CLIP |
| SPRED1 | ENSG00000166068 | HITS-CLIP |
| PTPN14 | ENSG00000152104 | HITS-CLIP |
| BACH1 | ENSG00000156273 | HITS-CLIP |
| ITCH | ENSG00000078747 | HITS-CLIP |
| WAC | ENSG00000095787 | Multiple |
| DNAJB5 | ENSG00000137094 | HITS-CLIP |
| PBX1 | ENSG00000185630 | HITS-CLIP |
| IRGQ | ENSG00000167378 | HITS-CLIP |
| BPTF | ENSG00000171634 | HITS-CLIP |
| ITGA3 | ENSG00000005884 | HITS-CLIP |
| PLCL2 | ENSG00000154822 | HITS-CLIP |
| CCT4 | ENSG00000115484 | HITS-CLIP |
| VPS36 | ENSG00000136100 | HITS-CLIP |
| APPBP2 | ENSG00000062725 | HITS-CLIP |
| TMED5 | ENSG00000117500 | HITS-CLIP |
| RHPN2 | ENSG00000131941 | HITS-CLIP |
| PHB | ENSG00000167085 | HITS-CLIP |
| HBP1 | ENSG00000105856 | HITS-CLIP |
| DSTYK | ENSG00000133059 | HITS-CLIP |
| TPBG | ENSG00000146242 | HITS-CLIP |
| ZC3H8 | ENSG00000144161 | PAR-CLIP |
| ATP11B | ENSG00000058063 | HITS-CLIP |
| RALBP1 | ENSG00000017797 | HITS-CLIP |
| KIF13A | ENSG00000137177 | HITS-CLIP |
| PPP6C | ENSG00000119414 | HITS-CLIP |
| DCUN1D4 | ENSG00000109184 | HITS-CLIP |
| MEF2D | ENSG00000116604 | HITS-CLIP |
| MCU | ENSG00000156026 | HITS-CLIP |
| RAB21 | ENSG00000080371 | HITS-CLIP |
| SETD5 | ENSG00000168137 | HITS-CLIP |
| ZNF736 | ENSG00000234444 | HITS-CLIP |
| OSBPL3 | ENSG00000070882 | HITS-CLIP |
| KPNA2 | ENSG00000182481 | HITS-CLIP |
| ZFHX3 | ENSG00000140836 | HITS-CLIP |
| ARF1 | ENSG00000143761 | HITS-CLIP |
| TMOD3 | ENSG00000138594 | HITS-CLIP |

| | | |
|---------|-----------------|-----------|
| NOTCH2 | ENSG00000134250 | HITS-CLIP |
| PTMS | ENSG00000159335 | HITS-CLIP |
| GLS | ENSG00000115419 | HITS-CLIP |
| VCL | ENSG00000035403 | HITS-CLIP |
| ARFGEF2 | ENSG00000124198 | HITS-CLIP |
| PPP2R5C | ENSG00000078304 | HITS-CLIP |
| RHOA | ENSG00000067560 | HITS-CLIP |
| SEC61A1 | ENSG00000058262 | HITS-CLIP |
| CACUL1 | ENSG00000151893 | HITS-CLIP |
| GTF2B | ENSG00000137947 | HITS-CLIP |
| CHD7 | ENSG00000171316 | HITS-CLIP |
| MED17 | ENSG00000042429 | HITS-CLIP |
| PMP22 | ENSG00000109099 | HITS-CLIP |
| IPO7 | ENSG00000205339 | HITS-CLIP |
| DDX3X | ENSG00000215301 | HITS-CLIP |
| RSRP1 | ENSG00000117616 | HITS-CLIP |
| FSTL1 | ENSG00000163430 | HITS-CLIP |
| MARK3 | ENSG00000075413 | HITS-CLIP |
| FKBP1A | ENSG00000088832 | HITS-CLIP |
| CALM2 | ENSG00000143933 | HITS-CLIP |
| MTMR12 | ENSG00000150712 | HITS-CLIP |
| ASF1B | ENSG00000105011 | HITS-CLIP |
| ZNF107 | ENSG00000196247 | HITS-CLIP |
| NCOA5 | ENSG00000124160 | HITS-CLIP |
| CDK2AP1 | ENSG00000111328 | HITS-CLIP |
| PDS5B | ENSG00000083642 | Multiple |
| APP | ENSG00000142192 | Multiple |
| CKAP5 | ENSG00000175216 | HITS-CLIP |
| TAOK1 | ENSG00000160551 | Multiple |
| TAB3 | ENSG00000157625 | HITS-CLIP |
| KBTBD6 | ENSG00000165572 | HITS-CLIP |
| TMEM123 | ENSG00000152558 | HITS-CLIP |
| PLEKHA8 | ENSG00000106086 | HITS-CLIP |
| RNF220 | ENSG00000187147 | HITS-CLIP |
| RPS6KA5 | ENSG00000100784 | HITS-CLIP |
| TNRC6B | ENSG00000100354 | HITS-CLIP |
| ZSWIM6 | ENSG00000130449 | HITS-CLIP |
| PTER | ENSG00000165983 | HITS-CLIP |
| ZNF548 | ENSG00000188785 | HITS-CLIP |
| PRDM1 | ENSG00000057657 | HITS-CLIP |
| TMEM66 | ENSG00000133872 | HITS-CLIP |
| ETV5 | ENSG00000244405 | HITS-CLIP |
| ASAP1 | ENSG00000153317 | HITS-CLIP |
| SLC7A1 | ENSG00000139514 | HITS-CLIP |

| | | |
|----------|-----------------|-----------|
| ICE1 | ENSG00000164151 | HITS-CLIP |
| FOXP1 | ENSG00000114861 | HITS-CLIP |
| TES | ENSG00000135269 | HITS-CLIP |
| ZBTB37 | ENSG00000185278 | HITS-CLIP |
| LYPD3 | ENSG00000124466 | HITS-CLIP |
| ETNK1 | ENSG00000139163 | HITS-CLIP |
| PEG10 | ENSG00000242265 | HITS-CLIP |
| ZNF217 | ENSG00000171940 | HITS-CLIP |
| ITGAV | ENSG00000138448 | HITS-CLIP |
| LARP4B | ENSG00000107929 | HITS-CLIP |
| CROT | ENSG00000005469 | HITS-CLIP |
| PSD3 | ENSG00000156011 | HITS-CLIP |
| RNF145 | ENSG00000145860 | HITS-CLIP |
| GPR37 | ENSG00000170775 | HITS-CLIP |
| NFAT5 | ENSG00000102908 | HITS-CLIP |
| PPP1R12A | ENSG00000058272 | HITS-CLIP |
| TET3 | ENSG00000187605 | HITS-CLIP |
| KLHDC10 | ENSG00000128607 | PAR-CLIP |
| SLC5A3 | ENSG00000198743 | HITS-CLIP |
| HNRNPAB | ENSG00000197451 | HITS-CLIP |
| CLIP1 | ENSG00000130779 | HITS-CLIP |
| PHC3 | ENSG00000173889 | HITS-CLIP |
| FBN1 | ENSG00000166147 | HITS-CLIP |
| ATP6AP2 | ENSG00000182220 | HITS-CLIP |
| FNDC3B | ENSG00000075420 | HITS-CLIP |
| CTNNB1 | ENSG00000168036 | HITS-CLIP |
| PUM1 | ENSG00000134644 | Multiple |
| ACTR3 | ENSG00000115091 | Multiple |
| GFPT1 | ENSG00000198380 | Multiple |
| FAR1 | ENSG00000197601 | HITS-CLIP |
| WWC3 | ENSG00000047644 | HITS-CLIP |
| NUFIP2 | ENSG00000108256 | Multiple |
| ST8SIA4 | ENSG00000113532 | Multiple |
| DYNC1LI2 | ENSG00000135720 | Multiple |
| VPS37A | ENSG00000155975 | HITS-CLIP |
| UBE3A | ENSG00000114062 | Multiple |
| ATL2 | ENSG00000119787 | HITS-CLIP |
| HERC2 | ENSG00000128731 | HITS-CLIP |
| CSNK1A1 | ENSG00000113712 | HITS-CLIP |
| CREBRF | ENSG00000164463 | HITS-CLIP |
| MYC | ENSG00000136997 | Multiple |
| TEX30 | ENSG00000151287 | HITS-CLIP |
| DEDD | ENSG00000158796 | HITS-CLIP |
| NR4A3 | ENSG00000119508 | HITS-CLIP |

| | | |
|----------|-----------------|-----------|
| AHCTF1 | ENSG00000153207 | HITS-CLIP |
| AHDC1 | ENSG00000126705 | HITS-CLIP |
| CCL7 | ENSG00000108688 | HITS-CLIP |
| KLF3 | ENSG00000109787 | HITS-CLIP |
| ARID1A | ENSG00000117713 | HITS-CLIP |
| TFRC | ENSG00000072274 | HITS-CLIP |
| RNF34 | ENSG00000170633 | HITS-CLIP |
| RPS16 | ENSG00000105193 | HITS-CLIP |
| SETD8 | ENSG00000183955 | HITS-CLIP |
| ZC3H12C | ENSG00000149289 | HITS-CLIP |
| ECT2 | ENSG00000114346 | HITS-CLIP |
| SET | ENSG00000119335 | HITS-CLIP |
| SLC38A2 | ENSG00000134294 | HITS-CLIP |
| RNF19A | ENSG00000034677 | HITS-CLIP |
| RAB11A | ENSG00000103769 | HITS-CLIP |
| RAB18 | ENSG00000099246 | HITS-CLIP |
| FOSL2 | ENSG00000075426 | Multiple |
| C5orf51 | ENSG00000205765 | HITS-CLIP |
| PTGS2 | ENSG00000073756 | HITS-CLIP |
| PABPC1 | ENSG00000070756 | HITS-CLIP |
| RBM47 | ENSG00000163694 | HITS-CLIP |
| CSNK2A1 | ENSG00000101266 | HITS-CLIP |
| TMPO | ENSG00000120802 | HITS-CLIP |
| FAM3C | ENSG00000196937 | HITS-CLIP |
| OTUD4 | ENSG00000164164 | HITS-CLIP |
| DNAJB14 | ENSG00000164031 | HITS-CLIP |
| FSCN1 | ENSG00000075618 | Multiple |
| TRIO | ENSG00000038382 | HITS-CLIP |
| CS | ENSG00000062485 | HITS-CLIP |
| RDH10 | ENSG00000121039 | Multiple |
| TSC22D2 | ENSG00000196428 | Multiple |
| PDCL | ENSG00000136940 | HITS-CLIP |
| IGF2BP3 | ENSG00000136231 | HITS-CLIP |
| ZC3H11A | ENSG00000058673 | HITS-CLIP |
| ADNP | ENSG00000101126 | HITS-CLIP |
| CCNY | ENSG00000108100 | HITS-CLIP |
| CD2BP2 | ENSG00000169217 | HITS-CLIP |
| FGF5 | ENSG00000138675 | HITS-CLIP |
| YY1 | ENSG00000100811 | HITS-CLIP |
| ARID5B | ENSG00000150347 | Multiple |
| COL1A2 | ENSG00000164692 | HITS-CLIP |
| SSR3 | ENSG00000114850 | HITS-CLIP |
| UBE2O | ENSG00000175931 | HITS-CLIP |
| ARHGAP29 | ENSG00000137962 | HITS-CLIP |

| | | |
|-----------|-----------------|-----------|
| ARRDC3 | ENSG00000113369 | HITS-CLIP |
| NFE2L2 | ENSG00000116044 | HITS-CLIP |
| UBE2H | ENSG00000186591 | HITS-CLIP |
| PRKAR1A | ENSG00000108946 | HITS-CLIP |
| AMOTL2 | ENSG00000114019 | HITS-CLIP |
| MGEA5 | ENSG00000198408 | Multiple |
| PUM2 | ENSG00000055917 | Multiple |
| ATXN7L3B | ENSG00000253719 | HITS-CLIP |
| AHR | ENSG00000106546 | HITS-CLIP |
| REV3L | ENSG00000009413 | HITS-CLIP |
| GOLGA1 | ENSG00000136935 | HITS-CLIP |
| MAGI1 | ENSG00000151276 | HITS-CLIP |
| EPM2AIP1 | ENSG00000178567 | PAR-CLIP |
| RBBP7 | ENSG00000102054 | HITS-CLIP |
| SOD2 | ENSG00000112096 | Multiple |
| AKAP13 | ENSG00000170776 | HITS-CLIP |
| PJA2 | ENSG00000198961 | HITS-CLIP |
| RTF1 | ENSG00000137815 | HITS-CLIP |
| UBR7 | ENSG00000012963 | HITS-CLIP |
| RLF | ENSG00000117000 | HITS-CLIP |
| FGD4 | ENSG00000139132 | HITS-CLIP |
| BASP1 | ENSG00000176788 | HITS-CLIP |
| RAB22A | ENSG00000124209 | HITS-CLIP |
| ENPP5 | ENSG00000112796 | HITS-CLIP |
| PPIP5K2 | ENSG00000145725 | HITS-CLIP |
| USP9X | ENSG00000124486 | HITS-CLIP |
| WDR43 | ENSG00000163811 | HITS-CLIP |
| HNRNPA2B1 | ENSG00000122566 | HITS-CLIP |
| HIPK1 | ENSG00000163349 | HITS-CLIP |
| RAB11B | ENSG00000185236 | Multiple |
| KCTD15 | ENSG00000153885 | HITS-CLIP |
| ZNF367 | ENSG00000165244 | PAR-CLIP |
| TSN | ENSG00000211460 | HITS-CLIP |
| ZDHHC17 | ENSG00000186908 | HITS-CLIP |
| NCKAP1 | ENSG00000061676 | Multiple |
| KHNYN | ENSG00000100441 | HITS-CLIP |
| CTDSPL2 | ENSG00000137770 | HITS-CLIP |
| HEBP2 | ENSG00000051620 | HITS-CLIP |
| CLDN12 | ENSG00000157224 | HITS-CLIP |
| ITGA6 | ENSG00000091409 | HITS-CLIP |
| VAV3 | ENSG00000134215 | HITS-CLIP |
| LSM14B | ENSG00000149657 | HITS-CLIP |
| CPEB3 | ENSG00000107864 | HITS-CLIP |
| ZC3H4 | ENSG00000130749 | HITS-CLIP |

| | | |
|-----------|-----------------|-----------|
| 6-Mar | ENSG00000145495 | HITS-CLIP |
| RAD21 | ENSG00000164754 | HITS-CLIP |
| ESRP1 | ENSG00000104413 | HITS-CLIP |
| SCARB2 | ENSG00000138760 | HITS-CLIP |
| KMT2C | ENSG00000055609 | HITS-CLIP |
| BTG1 | ENSG00000133639 | Multiple |
| SLFN5 | ENSG00000166750 | HITS-CLIP |
| PAR6B | ENSG00000124171 | HITS-CLIP |
| SLC23A2 | ENSG00000089057 | HITS-CLIP |
| DIS3 | ENSG00000083520 | HITS-CLIP |
| C20orf194 | ENSG00000088854 | HITS-CLIP |
| KLF6 | ENSG00000067082 | HITS-CLIP |
| GPR176 | ENSG00000166073 | HITS-CLIP |
| CBX5 | ENSG00000094916 | Multiple |
| SETX | ENSG00000107290 | Multiple |
| C3orf52 | ENSG00000114529 | HITS-CLIP |
| RAB14 | ENSG00000119396 | Multiple |
| TFG | ENSG00000114354 | PAR-CLIP |
| GOLIM4 | ENSG00000173905 | HITS-CLIP |
| UGDH | ENSG00000109814 | HITS-CLIP |
| NIN | ENSG00000100503 | HITS-CLIP |
| N4BP1 | ENSG00000102921 | HITS-CLIP |
| BMP2R | ENSG00000204217 | HITS-CLIP |
| ARHGAP12 | ENSG00000165322 | HITS-CLIP |
| BCL2L11 | ENSG00000153094 | HITS-CLIP |
| ERLEC1 | ENSG00000068912 | HITS-CLIP |
| TFAM | ENSG00000108064 | HITS-CLIP |
| COL4A1 | ENSG00000187498 | HITS-CLIP |
| SYNCRIP | ENSG00000135316 | HITS-CLIP |
| ASAP2 | ENSG00000151693 | Multiple |
| INO80D | ENSG00000114933 | HITS-CLIP |
| EFNA1 | ENSG00000169242 | HITS-CLIP |
| ZNF670 | ENSG00000277462 | HITS-CLIP |
| MARCKS | ENSG00000277443 | HITS-CLIP |
| MLLT6 | ENSG00000275023 | HITS-CLIP |
| ARHGAP1 | ENSG00000175220 | HITS-CLIP |
| RNF41 | ENSG00000181852 | PAR-CLIP |
| CCNT2 | ENSG00000082258 | Multiple |
| VAPB | ENSG00000124164 | HITS-CLIP |
| B2M | ENSG00000166710 | HITS-CLIP |
| CELF2 | ENSG00000048740 | HITS-CLIP |
| SRRT | ENSG00000087087 | HITS-CLIP |
| RNF114 | ENSG00000124226 | HITS-CLIP |
| HSPA13 | ENSG00000155304 | PAR-CLIP |

| | | |
|---------|-----------------|-----------|
| RNF11 | ENSG00000123091 | Multiple |
| POU2F1 | ENSG00000143190 | Multiple |
| ANP32E | ENSG00000143401 | Multiple |
| FASN | ENSG00000169710 | HITS-CLIP |
| CCNG1 | ENSG00000113328 | PAR-CLIP |
| EIF3L | ENSG00000100129 | PAR-CLIP |
| SLC38A1 | ENSG00000111371 | HITS-CLIP |
| LONRF3 | ENSG00000175556 | Multiple |
| PRLR | ENSG00000113494 | HITS-CLIP |
| PPP1R2 | ENSG00000184203 | Multiple |
| NEK7 | ENSG00000151414 | Multiple |
| MSI2 | ENSG00000153944 | HITS-CLIP |
| TENM3 | ENSG00000218336 | HITS-CLIP |
| SEC16A | ENSG00000148396 | HITS-CLIP |
| FOS | ENSG00000170345 | HITS-CLIP |
| PDLIM5 | ENSG00000163110 | HITS-CLIP |
| MLK4 | ENSG00000143674 | Multiple |
| ZMAT3 | ENSG00000172667 | PAR-CLIP |
| NETO2 | ENSG00000171208 | PAR-CLIP |
| CNOT6 | ENSG00000113300 | PAR-CLIP |
| BICD2 | ENSG00000185963 | Multiple |
| GSK3B | ENSG00000082701 | PAR-CLIP |
| RNF44 | ENSG00000146083 | PAR-CLIP |
| RBM25 | ENSG00000119707 | Multiple |
| ARAP2 | ENSG00000047365 | PAR-CLIP |
| FBXL3 | ENSG00000005812 | PAR-CLIP |
| WAPAL | ENSG00000062650 | HITS-CLIP |
| PKIA | ENSG00000171033 | PAR-CLIP |
| RBL2 | ENSG00000103479 | PAR-CLIP |
| DAZAP2 | ENSG00000183283 | PAR-CLIP |
| ITPRIP | ENSG00000148841 | HITS-CLIP |
| AVPI1 | ENSG00000119986 | PAR-CLIP |
| RBM27 | ENSG00000091009 | HITS-CLIP |
| VWA9 | ENSG00000138614 | PAR-CLIP |
| UGCG | ENSG00000148154 | HITS-CLIP |
| TNPO1 | ENSG00000083312 | Multiple |
| EFCAB14 | ENSG00000159658 | Multiple |
| UBE2Z | ENSG00000159202 | Multiple |
| TVP23B | ENSG00000171928 | HITS-CLIP |
| ZNF283 | ENSG00000167637 | PAR-CLIP |
| CDH2 | ENSG00000170558 | PAR-CLIP |
| G3BP1 | ENSG00000145907 | PAR-CLIP |
| HSPA1A | ENSG00000204389 | Multiple |
| RPS23 | ENSG00000186468 | PAR-CLIP |

| | | |
|------------------|-----------------|-----------|
| PDCD4 | ENSG00000150593 | HITS-CLIP |
| MASTL | ENSG00000120539 | PAR-CLIP |
| ADAM10 | ENSG00000137845 | HITS-CLIP |
| KL | ENSG00000133116 | Multiple |
| EMP1 | ENSG00000134531 | HITS-CLIP |
| OTUD3 | ENSG00000169914 | Multiple |
| DSC2 | ENSG00000134755 | HITS-CLIP |
| IRF4 | ENSG00000137265 | PAR-CLIP |
| PDHX | ENSG00000110435 | HITS-CLIP |
| RAP2B | ENSG00000181467 | Multiple |
| TCP11L2 | ENSG00000166046 | HITS-CLIP |
| GTF2E2 | ENSG00000197265 | Multiple |
| MEGF9 | ENSG00000106780 | HITS-CLIP |
| UBP1 | ENSG00000153560 | HITS-CLIP |
| RP4-695O20__B.10 | ENSG00000197182 | PAR-CLIP |
| ANO6 | ENSG00000177119 | HITS-CLIP |
| RPL17 | ENSG00000265681 | PAR-CLIP |
| GRAMD1B | ENSG00000023171 | PAR-CLIP |
| NUP62 | ENSG00000213024 | Multiple |
| BCL9 | ENSG00000116128 | PAR-CLIP |
| CIC | ENSG00000079432 | Multiple |
| FBXL5 | ENSG00000118564 | PAR-CLIP |
| ZBED4 | ENSG00000100426 | PAR-CLIP |
| TPD52 | ENSG00000076554 | Multiple |
| AREL1 | ENSG00000119682 | PAR-CLIP |
| ATXN7L3 | ENSG00000087152 | HITS-CLIP |
| FHL1 | ENSG00000022267 | PAR-CLIP |
| ZBTB38 | ENSG00000177311 | HITS-CLIP |
| PLA2R1 | ENSG00000153246 | HITS-CLIP |
| PLEC | ENSG00000178209 | HITS-CLIP |
| ANKRD11 | ENSG00000167522 | PAR-CLIP |
| ITGB8 | ENSG00000105855 | Multiple |
| NUCKS1 | ENSG00000069275 | Multiple |
| CLASP2 | ENSG00000163539 | Multiple |
| UBAC2 | ENSG00000134882 | HITS-CLIP |
| ZNF12 | ENSG00000164631 | Multiple |
| RAD23B | ENSG00000119318 | Multiple |
| SMAD2 | ENSG00000175387 | PAR-CLIP |
| CAMSAP1 | ENSG00000130559 | PAR-CLIP |
| SKOR1 | ENSG00000188779 | HITS-CLIP |
| DICER1 | ENSG00000100697 | Multiple |
| CBX2 | ENSG00000173894 | HITS-CLIP |
| DNM2 | ENSG00000079805 | HITS-CLIP |
| EN2 | ENSG00000164778 | PAR-CLIP |

| | | |
|--------------|-----------------|-----------|
| SCAI | ENSG00000173611 | PAR-CLIP |
| MAST4 | ENSG00000069020 | HITS-CLIP |
| TMEM33 | ENSG00000109133 | Multiple |
| CBFA2T2 | ENSG00000078699 | Multiple |
| MMGT1 | ENSG00000169446 | PAR-CLIP |
| NRAS | ENSG00000213281 | HITS-CLIP |
| DNAJC3 | ENSG00000102580 | HITS-CLIP |
| LPHN2 | ENSG00000117114 | Multiple |
| HN1 | ENSG00000189159 | Multiple |
| MTHFD2 | ENSG00000065911 | Multiple |
| THUMPD3 | ENSG00000134077 | PAR-CLIP |
| PPP2R3A | ENSG00000073711 | HITS-CLIP |
| MAP7D3 | ENSG00000129680 | PAR-CLIP |
| PRRC1 | ENSG00000164244 | PAR-CLIP |
| CD38 | ENSG00000004468 | PAR-CLIP |
| CHST15 | ENSG00000182022 | HITS-CLIP |
| CLIC4 | ENSG00000169504 | HITS-CLIP |
| COPS8 | ENSG00000198612 | PAR-CLIP |
| MSMO1 | ENSG00000052802 | PAR-CLIP |
| KBTBD2 | ENSG00000170852 | Multiple |
| CHD1 | ENSG00000153922 | PAR-CLIP |
| KIF1B | ENSG00000054523 | PAR-CLIP |
| ABT1 | ENSG00000146109 | Multiple |
| SPPL2A | ENSG00000138600 | HITS-CLIP |
| TMED7-TICAM2 | ENSG00000251201 | PAR-CLIP |
| RAB3D | ENSG00000105514 | HITS-CLIP |
| DR1 | ENSG00000117505 | HITS-CLIP |
| FAM78A | ENSG00000126882 | PAR-CLIP |
| EXOC5 | ENSG00000070367 | HITS-CLIP |
| FBXO30 | ENSG00000118496 | Multiple |
| ERO1L | ENSG00000197930 | Multiple |
| C16orf87 | ENSG00000155330 | PAR-CLIP |
| FAM115A | ENSG00000198420 | HITS-CLIP |
| YOD1 | ENSG00000180667 | Multiple |
| HEATR6 | ENSG00000068097 | Multiple |
| TMED7 | ENSG00000134970 | PAR-CLIP |
| SMAD9 | ENSG00000120693 | PAR-CLIP |
| RRN3 | ENSG00000085721 | PAR-CLIP |
| SLC25A3 | ENSG00000075415 | Multiple |
| SOX11 | ENSG00000176887 | HITS-CLIP |
| PTPN9 | ENSG00000169410 | PAR-CLIP |
| CRK | ENSG00000167193 | HITS-CLIP |
| KIAA1598 | ENSG00000187164 | HITS-CLIP |
| FBXW7 | ENSG00000109670 | Multiple |

| | | |
|----------|-----------------|-----------|
| GATA3 | ENSG00000107485 | Multiple |
| TRIM37 | ENSG00000108395 | Multiple |
| COL12A1 | ENSG00000111799 | HITS-CLIP |
| TRIAP1 | ENSG00000170855 | PAR-CLIP |
| ARRDC4 | ENSG00000140450 | HITS-CLIP |
| THBS1 | ENSG00000137801 | HITS-CLIP |
| RUNX1 | ENSG00000159216 | PAR-CLIP |
| TMEM167A | ENSG00000174695 | Multiple |
| RPL3 | ENSG00000100316 | PAR-CLIP |
| MTMR6 | ENSG00000139505 | PAR-CLIP |
| VANGL1 | ENSG00000173218 | PAR-CLIP |
| PHACTR2 | ENSG00000112419 | HITS-CLIP |
| UBTD2 | ENSG00000168246 | PAR-CLIP |
| OPN3 | ENSG00000054277 | PAR-CLIP |
| AGO3 | ENSG00000126070 | Multiple |
| PIP5K1C | ENSG00000186111 | Multiple |
| MEX3B | ENSG00000183496 | PAR-CLIP |
| CLCN3 | ENSG00000109572 | HITS-CLIP |
| PAK2 | ENSG00000180370 | HITS-CLIP |
| C11orf30 | ENSG00000158636 | Multiple |
| SAMD8 | ENSG00000156671 | PAR-CLIP |
| PVRL2 | ENSG00000130202 | HITS-CLIP |
| SRP19 | ENSG00000153037 | HITS-CLIP |
| SPATA2 | ENSG00000158480 | Multiple |
| TADA2B | ENSG00000173011 | Multiple |
| ELK3 | ENSG00000111145 | Multiple |
| SETD7 | ENSG00000145391 | Multiple |
| LMNB2 | ENSG00000176619 | Multiple |
| USP37 | ENSG00000135913 | Multiple |
| SEL1L | ENSG00000071537 | HITS-CLIP |
| FAM175A | ENSG00000163322 | PAR-CLIP |
| CPEB4 | ENSG00000113742 | PAR-CLIP |
| HABP4 | ENSG00000130956 | PAR-CLIP |
| EXTL3 | ENSG00000012232 | HITS-CLIP |
| COPS7B | ENSG00000144524 | HITS-CLIP |
| EXPH5 | ENSG00000110723 | PAR-CLIP |
| DIDO1 | ENSG00000101191 | Multiple |
| UBQLN1 | ENSG00000135018 | HITS-CLIP |
| IFNGR2 | ENSG00000159128 | Multiple |
| CSNK1G3 | ENSG00000151292 | HITS-CLIP |
| PURA | ENSG00000185129 | PAR-CLIP |
| TEP1 | ENSG00000129566 | HITS-CLIP |
| CYP51A1 | ENSG00000001630 | Multiple |
| PAFAH1B1 | ENSG00000007168 | Multiple |

| | | |
|----------|-----------------|-----------|
| ATAD1 | ENSG00000138138 | HITS-CLIP |
| SLTM | ENSG00000137776 | HITS-CLIP |
| NAP1L1 | ENSG00000187109 | Multiple |
| GCLM | ENSG00000023909 | PAR-CLIP |
| SGPL1 | ENSG00000166224 | PAR-CLIP |
| REEP3 | ENSG00000165476 | Multiple |
| YWHAG | ENSG00000170027 | HITS-CLIP |
| SEC23A | ENSG00000100934 | HITS-CLIP |
| PPP1CC | ENSG00000186298 | Multiple |
| MCL1 | ENSG00000143384 | Multiple |
| PTPN4 | ENSG00000088179 | HITS-CLIP |
| MAPK14 | ENSG00000112062 | HITS-CLIP |
| GNA13 | ENSG00000120063 | Multiple |
| CCND2 | ENSG00000118971 | HITS-CLIP |
| NDNL2 | ENSG00000185115 | PAR-CLIP |
| ADAT1 | ENSG00000065457 | HITS-CLIP |
| TSPAN3 | ENSG00000140391 | PAR-CLIP |
| ZNF260 | ENSG00000254004 | Multiple |
| MKL2 | ENSG00000186260 | Multiple |
| HNRNPDL | ENSG00000152795 | PAR-CLIP |
| HOXA9 | ENSG00000078399 | Multiple |
| TM9SF3 | ENSG00000077147 | PAR-CLIP |
| RC3H2 | ENSG00000056586 | Multiple |
| MTMR4 | ENSG00000108389 | HITS-CLIP |
| HNRNPF | ENSG00000169813 | Multiple |
| NIP7 | ENSG00000132603 | PAR-CLIP |
| PGM2 | ENSG00000169299 | HITS-CLIP |
| ZNF850 | ENSG00000267041 | PAR-CLIP |
| BRIP1 | ENSG00000136492 | HITS-CLIP |
| ARHGAP17 | ENSG00000140750 | PAR-CLIP |
| SYPL1 | ENSG00000008282 | Multiple |
| BACH1 | ENSG00000156273 | Multiple |
| SAMSN1 | ENSG00000155307 | PAR-CLIP |
| CPSF2 | ENSG00000165934 | Multiple |
| GNG12 | ENSG00000172380 | PAR-CLIP |
| HUWE1 | ENSG00000086758 | Multiple |
| FRS2 | ENSG00000166225 | HITS-CLIP |
| CBX4 | ENSG00000141582 | HITS-CLIP |
| BCL9L | ENSG00000186174 | Multiple |
| STX3 | ENSG00000166900 | HITS-CLIP |
| KLF12 | ENSG00000118922 | Multiple |
| MRPS12 | ENSG00000128626 | PAR-CLIP |
| EPB41L4B | ENSG00000095203 | HITS-CLIP |
| CAMSAP2 | ENSG00000118200 | Multiple |

| | | |
|-----------|-----------------|-----------|
| DIP2B | ENSG00000066084 | Multiple |
| ANKRD50 | ENSG00000151458 | Multiple |
| LCOR | ENSG00000196233 | Multiple |
| ACLY | ENSG00000131473 | HITS-CLIP |
| ZC3H6 | ENSG00000188177 | PAR-CLIP |
| KIAA0319L | ENSG00000142687 | Multiple |
| FZD6 | ENSG00000164930 | Multiple |
| ZNF24 | ENSG00000172466 | PAR-CLIP |
| PPP3R1 | ENSG00000221823 | HITS-CLIP |
| HIST1H4C | ENSG00000197061 | PAR-CLIP |
| TOB1 | ENSG00000141232 | HITS-CLIP |
| UBE2E2 | ENSG00000182247 | PAR-CLIP |
| WAC | ENSG00000095787 | PAR-CLIP |
| GAN | ENSG00000261609 | Multiple |
| WNK1 | ENSG00000060237 | Multiple |
| GSE1 | ENSG00000131149 | HITS-CLIP |
| PMF1 | ENSG00000160783 | PAR-CLIP |
| PHF20 | ENSG00000025293 | PAR-CLIP |
| B4GALT6 | ENSG00000118276 | PAR-CLIP |
| SEMA3C | ENSG00000075223 | Multiple |
| CA12 | ENSG00000074410 | HITS-CLIP |
| PREPL | ENSG00000138078 | HITS-CLIP |
| ADO | ENSG00000181915 | Multiple |
| SOD1 | ENSG00000142168 | PAR-CLIP |
| TMEM64 | ENSG00000180694 | HITS-CLIP |
| EYA4 | ENSG00000112319 | PAR-CLIP |
| SLC4A4 | ENSG00000080493 | PAR-CLIP |
| CCT5 | ENSG00000150753 | Multiple |
| ZNF664 | ENSG00000179195 | Multiple |
| ATG4D | ENSG00000130734 | PAR-CLIP |
| IER2 | ENSG00000160888 | Multiple |
| ERLIN2 | ENSG00000147475 | HITS-CLIP |
| ZSCAN22 | ENSG00000182318 | PAR-CLIP |
| URB2 | ENSG00000135763 | HITS-CLIP |
| ZNF507 | ENSG00000168813 | HITS-CLIP |
| CPSF6 | ENSG00000111605 | Multiple |
| APPBP2 | ENSG00000062725 | PAR-CLIP |
| SMC3 | ENSG00000108055 | HITS-CLIP |
| SLC1A1 | ENSG00000106688 | PAR-CLIP |
| TMED5 | ENSG00000117500 | Multiple |
| SPG11 | ENSG00000104133 | HITS-CLIP |
| DSTYK | ENSG00000133059 | Multiple |
| STYX | ENSG00000198252 | HITS-CLIP |
| AP4E1 | ENSG00000081014 | HITS-CLIP |

| | | |
|----------|-----------------|-----------|
| MED13 | ENSG00000108510 | Multiple |
| CCNF | ENSG00000162063 | PAR-CLIP |
| SNTB2 | ENSG00000168807 | HITS-CLIP |
| ADNP2 | ENSG00000101544 | HITS-CLIP |
| TMTC3 | ENSG00000139324 | Multiple |
| PAPPA | ENSG00000182752 | HITS-CLIP |
| SQLE | ENSG00000104549 | HITS-CLIP |
| RALBP1 | ENSG00000017797 | Multiple |
| PTPN1 | ENSG00000196396 | HITS-CLIP |
| PPTC7 | ENSG00000196850 | Multiple |
| NUP88 | ENSG00000108559 | HITS-CLIP |
| HIPK3 | ENSG00000110422 | HITS-CLIP |
| KIF13A | ENSG00000137177 | Multiple |
| DCBLD2 | ENSG00000057019 | Multiple |
| PAPOLA | ENSG00000090060 | PAR-CLIP |
| DLG5 | ENSG00000151208 | HITS-CLIP |
| FZR1 | ENSG00000105325 | HITS-CLIP |
| AFF4 | ENSG00000072364 | HITS-CLIP |
| ANKRD17 | ENSG00000132466 | Multiple |
| STAG2 | ENSG00000101972 | Multiple |
| TIMM8A | ENSG00000126953 | PAR-CLIP |
| HNRNPA0 | ENSG00000177733 | Multiple |
| N4BP2L2 | ENSG00000244754 | Multiple |
| CSDE1 | ENSG00000009307 | HITS-CLIP |
| IRF2BP2 | ENSG00000168264 | HITS-CLIP |
| DGCR2 | ENSG00000070413 | HITS-CLIP |
| RBM22 | ENSG00000086589 | PAR-CLIP |
| LMNB1 | ENSG00000113368 | Multiple |
| MEF2D | ENSG00000116604 | Multiple |
| HMGB2 | ENSG00000164104 | Multiple |
| TNKS2 | ENSG00000107854 | Multiple |
| SP3 | ENSG00000172845 | HITS-CLIP |
| MOB1B | ENSG00000173542 | PAR-CLIP |
| ATP1B1 | ENSG00000143153 | Multiple |
| URI1 | ENSG00000105176 | Multiple |
| SERINC3 | ENSG00000132824 | HITS-CLIP |
| GPATCH2L | ENSG00000089916 | HITS-CLIP |
| C19orf12 | ENSG00000131943 | PAR-CLIP |
| PPP2R5D | ENSG00000112640 | HITS-CLIP |
| ARID4A | ENSG00000032219 | HITS-CLIP |
| ZNF292 | ENSG00000188994 | PAR-CLIP |
| WEE1 | ENSG00000166483 | Multiple |
| CDK1 | ENSG00000170312 | PAR-CLIP |
| SFT2D2 | ENSG00000213064 | HITS-CLIP |

| | | |
|----------|-----------------|-----------|
| LRP12 | ENSG00000147650 | PAR-CLIP |
| PHF3 | ENSG00000118482 | Multiple |
| AGFG1 | ENSG00000173744 | Multiple |
| IGIP | ENSG00000182700 | Multiple |
| IGF1R | ENSG00000140443 | PAR-CLIP |
| LSM14A | ENSG00000257103 | PAR-CLIP |
| PIK3C2B | ENSG00000133056 | HITS-CLIP |
| FMR1 | ENSG00000102081 | Multiple |
| BTBD3 | ENSG00000132640 | Multiple |
| PSME4 | ENSG00000068878 | HITS-CLIP |
| KPNA2 | ENSG00000182481 | PAR-CLIP |
| AGO4 | ENSG00000134698 | PAR-CLIP |
| EVI5 | ENSG00000067208 | Multiple |
| HSPD1 | ENSG00000144381 | HITS-CLIP |
| ARF1 | ENSG00000143761 | Multiple |
| FAM174A | ENSG00000174132 | HITS-CLIP |
| NACC1 | ENSG00000160877 | Multiple |
| CLTC | ENSG00000141367 | Multiple |
| KPNA4 | ENSG00000186432 | HITS-CLIP |
| DNAJC7 | ENSG00000168259 | Multiple |
| IFITM3 | ENSG00000142089 | HITS-CLIP |
| SQSTM1 | ENSG00000161011 | PAR-CLIP |
| TSPAN12 | ENSG00000106025 | Multiple |
| ZNF800 | ENSG00000048405 | HITS-CLIP |
| ID4 | ENSG00000172201 | PAR-CLIP |
| VCL | ENSG00000035403 | PAR-CLIP |
| USP47 | ENSG00000170242 | HITS-CLIP |
| GNB1 | ENSG00000078369 | Multiple |
| SNN | ENSG00000184602 | Multiple |
| LUC7L3 | ENSG00000108848 | HITS-CLIP |
| NHLRC2 | ENSG00000196865 | Multiple |
| ETF1 | ENSG00000120705 | HITS-CLIP |
| RHOA | ENSG00000067560 | Multiple |
| B3GALNT2 | ENSG00000162885 | Multiple |
| PCDH10 | ENSG00000138650 | HITS-CLIP |
| MAP3K13 | ENSG00000073803 | HITS-CLIP |
| CHD7 | ENSG00000171316 | PAR-CLIP |
| TJP1 | ENSG00000104067 | Multiple |
| FAM91A1 | ENSG00000176853 | Multiple |
| EED | ENSG00000074266 | HITS-CLIP |
| CD2AP | ENSG00000198087 | HITS-CLIP |
| RAB1A | ENSG00000138069 | Multiple |
| NARS | ENSG00000134440 | PAR-CLIP |
| PSAP | ENSG00000197746 | HITS-CLIP |

| | | |
|----------|-----------------|-----------|
| TMEM179B | ENSG00000185475 | PAR-CLIP |
| HNRNPU | ENSG00000153187 | Multiple |
| TCF19 | ENSG00000137310 | PAR-CLIP |
| HSDL1 | ENSG00000103160 | Multiple |
| MGARP | ENSG00000137463 | PAR-CLIP |
| ZKSCAN8 | ENSG00000198315 | PAR-CLIP |
| EZH2 | ENSG00000106462 | Multiple |
| CDK6 | ENSG00000105810 | PAR-CLIP |
| HEG1 | ENSG00000173706 | Multiple |
| MAP3K9 | ENSG00000006432 | PAR-CLIP |
| NISCH | ENSG00000010322 | HITS-CLIP |
| FYN | ENSG00000010810 | PAR-CLIP |
| 7-Sep | ENSG00000122545 | PAR-CLIP |
| SERINC1 | ENSG00000111897 | HITS-CLIP |
| NDFIP1 | ENSG00000131507 | PAR-CLIP |
| CALM2 | ENSG00000143933 | PAR-CLIP |
| PRKCE | ENSG00000171132 | HITS-CLIP |
| SMARCD1 | ENSG00000066117 | Multiple |
| MBD1 | ENSG00000141644 | PAR-CLIP |
| BUB3 | ENSG00000154473 | PAR-CLIP |
| GCC1 | ENSG00000179562 | PAR-CLIP |
| MSN | ENSG00000147065 | PAR-CLIP |
| ZCCHC2 | ENSG00000141664 | PAR-CLIP |
| RPS20 | ENSG00000008988 | Multiple |
| EPC1 | ENSG00000120616 | HITS-CLIP |
| CDK2AP1 | ENSG00000111328 | PAR-CLIP |
| TANK | ENSG00000136560 | Multiple |
| VHL | ENSG00000134086 | HITS-CLIP |
| PTPN22 | ENSG00000134242 | HITS-CLIP |
| MAT2B | ENSG00000038274 | HITS-CLIP |
| 7-Mar | ENSG00000136536 | PAR-CLIP |
| LBR | ENSG00000143815 | Multiple |
| DST | ENSG00000151914 | Multiple |
| KIAA2026 | ENSG00000183354 | PAR-CLIP |
| AMMECR1L | ENSG00000144233 | PAR-CLIP |
| TMEM65 | ENSG00000164983 | Multiple |
| NKX6-1 | ENSG00000163623 | PAR-CLIP |
| FOXK2 | ENSG00000141568 | HITS-CLIP |
| ZNF746 | ENSG00000181220 | Multiple |
| SIKE1 | ENSG00000052723 | Multiple |
| ADIPOR2 | ENSG00000006831 | Multiple |
| IER3 | ENSG00000137331 | HITS-CLIP |
| RFX7 | ENSG00000181827 | Multiple |
| FAT4 | ENSG00000196159 | Multiple |

| | | |
|----------|-----------------|-----------|
| ATP2B1 | ENSG00000070961 | PAR-CLIP |
| ANLN | ENSG00000011426 | Multiple |
| FAM96A | ENSG00000166797 | Multiple |
| NSD1 | ENSG00000165671 | Multiple |
| RCN2 | ENSG00000117906 | HITS-CLIP |
| PLEKHA8 | ENSG00000106086 | Multiple |
| NCL | ENSG00000115053 | HITS-CLIP |
| ATP5B | ENSG00000110955 | Multiple |
| FAM222B | ENSG00000173065 | Multiple |
| CHEK1 | ENSG00000149554 | Multiple |
| C7orf49 | ENSG00000122783 | HITS-CLIP |
| KLF10 | ENSG00000155090 | HITS-CLIP |
| MPP5 | ENSG00000072415 | Multiple |
| MRFAP1 | ENSG00000179010 | HITS-CLIP |
| TMEM181 | ENSG00000146433 | Multiple |
| PPP2R5A | ENSG00000066027 | PAR-CLIP |
| MAML3 | ENSG00000196782 | PAR-CLIP |
| TNRC6B | ENSG00000100354 | Multiple |
| PDE4D | ENSG00000113448 | HITS-CLIP |
| PRRC2C | ENSG00000117523 | HITS-CLIP |
| ZNF197 | ENSG00000186448 | PAR-CLIP |
| MCTS1 | ENSG00000232119 | HITS-CLIP |
| DCAF13 | ENSG00000164934 | HITS-CLIP |
| ASH1L | ENSG00000116539 | PAR-CLIP |
| TOP2B | ENSG00000077097 | HITS-CLIP |
| ZSWIM6 | ENSG00000130449 | PAR-CLIP |
| IMPA1 | ENSG00000133731 | Multiple |
| PANK3 | ENSG00000120137 | Multiple |
| MTMR7 | ENSG00000003987 | HITS-CLIP |
| EDEM1 | ENSG00000134109 | HITS-CLIP |
| SRSF1 | ENSG00000136450 | HITS-CLIP |
| PURB | ENSG00000146676 | Multiple |
| MRPL35 | ENSG00000132313 | PAR-CLIP |
| EVL | ENSG00000196405 | HITS-CLIP |
| HIF1AN | ENSG00000166135 | HITS-CLIP |
| SENP6 | ENSG00000112701 | HITS-CLIP |
| NMI | ENSG00000123609 | PAR-CLIP |
| OSBPL9 | ENSG00000117859 | PAR-CLIP |
| ZFP82 | ENSG00000181007 | PAR-CLIP |
| SLC35F5 | ENSG00000115084 | PAR-CLIP |
| TMEM170B | ENSG00000205269 | HITS-CLIP |
| ZNF207 | ENSG00000010244 | Multiple |
| RFC1 | ENSG00000035928 | HITS-CLIP |
| TRIP12 | ENSG00000153827 | HITS-CLIP |

| | | |
|-----------|-----------------|-----------|
| C19orf82 | ENSG00000267106 | HITS-CLIP |
| DYRK2 | ENSG00000127334 | Multiple |
| TXNDC16 | ENSG00000087301 | HITS-CLIP |
| H2AFV | ENSG00000105968 | Multiple |
| DCAF7 | ENSG00000136485 | Multiple |
| CDK8 | ENSG00000132964 | Multiple |
| RIOK2 | ENSG00000058729 | PAR-CLIP |
| ARL4C | ENSG00000188042 | Multiple |
| C7orf73 | ENSG00000243317 | PAR-CLIP |
| HECTD1 | ENSG00000092148 | Multiple |
| ASAP1 | ENSG00000153317 | PAR-CLIP |
| MAPK1IP1L | ENSG00000168175 | HITS-CLIP |
| GREB1L | ENSG00000141449 | Multiple |
| ACVR2B | ENSG00000114739 | PAR-CLIP |
| EDEM3 | ENSG00000116406 | Multiple |
| FAM46A | ENSG00000112773 | Multiple |
| CD81 | ENSG00000110651 | Multiple |
| RAB5A | ENSG00000144566 | HITS-CLIP |
| FAM69B | ENSG00000165716 | HITS-CLIP |
| PCGF5 | ENSG00000180628 | PAR-CLIP |
| SCAMP1 | ENSG00000085365 | Multiple |
| EIF5 | ENSG00000100664 | Multiple |
| ARID2 | ENSG00000189079 | HITS-CLIP |
| PRICKLE1 | ENSG00000139174 | PAR-CLIP |
| ATM | ENSG00000149311 | PAR-CLIP |
| XPO7 | ENSG00000130227 | PAR-CLIP |
| SCAP | ENSG00000114650 | HITS-CLIP |
| MAVS | ENSG00000088888 | HITS-CLIP |
| HECTD2 | ENSG00000165338 | PAR-CLIP |
| EIF2S3 | ENSG00000130741 | PAR-CLIP |
| ISOC1 | ENSG00000066583 | HITS-CLIP |
| ETNK1 | ENSG00000139163 | Multiple |
| MLEC | ENSG00000110917 | Multiple |
| ARHGAP18 | ENSG00000146376 | HITS-CLIP |
| PISD | ENSG00000241878 | PAR-CLIP |
| ZNF143 | ENSG00000166478 | PAR-CLIP |
| ZNF217 | ENSG00000171940 | Multiple |
| LARP4B | ENSG00000107929 | Multiple |
| ABHD10 | ENSG00000144827 | PAR-CLIP |
| ANK3 | ENSG00000151150 | HITS-CLIP |
| RASA1 | ENSG00000145715 | HITS-CLIP |
| SH3BP4 | ENSG00000130147 | HITS-CLIP |
| FH | ENSG00000091483 | HITS-CLIP |
| ARHGEF11 | ENSG00000132694 | HITS-CLIP |

| | | |
|----------|-----------------|--------------|
| SNX31 | ENSG00000174226 | PAR-CLIP |
| DERL2 | ENSG00000072849 | PAR-CLIP |
| KANSL1 | ENSG00000120071 | HITS-CLIP |
| CERS2 | ENSG00000143418 | PAR-CLIP |
| SLC9A1 | ENSG00000090020 | HITS-CLIP |
| REPIN1 | ENSG00000214022 | HITS-CLIP |
| KIAA1432 | ENSG00000107036 | Multiple |
| SMC4 | ENSG00000113810 | HITS-CLIP |
| HDGF | ENSG00000143321 | HITS-CLIP |
| ZFX | ENSG00000005889 | Multiple |
| DDIT4 | ENSG00000168209 | Multiple |
| SFXN1 | ENSG00000164466 | PAR-CLIP |
| TFAP4 | ENSG00000090447 | Multiple |
| PIKFYVE | ENSG00000115020 | HITS-CLIP |
| AEBP2 | ENSG00000139154 | Multiple |
| TET3 | ENSG00000187605 | Multiple |
| CMIP | ENSG00000153815 | HITS-CLIP |
| ZNF655 | ENSG00000197343 | Multiple |
| CSNK1D | ENSG00000141551 | Multiple |
| ATP5G3 | ENSG00000154518 | Multiple |
| AGO1 | ENSG00000092847 | PAR-CLIP |
| AP1S2 | ENSG00000182287 | Multiple |
| PCNX | ENSG00000100731 | HITS-CLIP |
| HNRNPAB | ENSG00000197451 | Multiple |
| CLIP1 | ENSG00000130779 | Multiple |
| EEF2 | ENSG00000167658 | PAR-CLIP |
| TMEM161B | ENSG00000164180 | HITS-CLIP |
| BTG2 | ENSG00000159388 | Multiple |
| CASP3 | ENSG00000164305 | Western Blot |
| FBN1 | ENSG00000166147 | Multiple |
| STX16 | ENSG00000124222 | PAR-CLIP |
| PDCD10 | ENSG00000114209 | HITS-CLIP |
| PAQR7 | ENSG00000182749 | PAR-CLIP |
| AK6 | ENSG00000273841 | HITS-CLIP |
| JUN | ENSG00000177606 | PAR-CLIP |
| PPP1R15B | ENSG00000158615 | HITS-CLIP |
| WDR33 | ENSG00000136709 | PAR-CLIP |
| DCP2 | ENSG00000172795 | Multiple |
| ATP6AP2 | ENSG00000182220 | Multiple |
| ZNF649 | ENSG00000198093 | PAR-CLIP |
| FANCM | ENSG00000187790 | HITS-CLIP |
| GOLGA8A | ENSG00000175265 | Multiple |
| HMGXB4 | ENSG00000100281 | PAR-CLIP |
| SLC20A2 | ENSG00000168575 | PAR-CLIP |

| | | |
|----------|-----------------|-----------|
| CCND1 | ENSG00000110092 | Multiple |
| GRPEL2 | ENSG00000164284 | Multiple |
| PFN2 | ENSG00000070087 | PAR-CLIP |
| FAM117B | ENSG00000138439 | PAR-CLIP |
| C10orf12 | ENSG00000155640 | Multiple |
| UBE2A | ENSG00000077721 | Multiple |
| ZNF678 | ENSG00000181450 | PAR-CLIP |
| PUM1 | ENSG00000134644 | HITS-CLIP |
| PPP3CB | ENSG00000107758 | HITS-CLIP |
| TBC1D24 | ENSG00000162065 | PAR-CLIP |
| SNX27 | ENSG00000143376 | PAR-CLIP |
| PTBP3 | ENSG00000119314 | HITS-CLIP |
| TUBA1C | ENSG00000167553 | PAR-CLIP |
| GPD2 | ENSG00000115159 | PAR-CLIP |
| NR3C1 | ENSG00000113580 | PAR-CLIP |
| TAPBP | ENSG00000231925 | HITS-CLIP |
| SSFA2 | ENSG00000138434 | Multiple |
| PIGC | ENSG00000135845 | HITS-CLIP |
| KCTD2 | ENSG00000180901 | PAR-CLIP |
| PUS7L | ENSG00000129317 | HITS-CLIP |
| IFFO2 | ENSG00000169991 | HITS-CLIP |
| SKP2 | ENSG00000145604 | Multiple |
| ZNF264 | ENSG00000083844 | PAR-CLIP |
| CIAPIN1 | ENSG00000005194 | HITS-CLIP |
| PGBD4 | ENSG00000182405 | PAR-CLIP |
| GCN1L1 | ENSG00000089154 | HITS-CLIP |
| FAR1 | ENSG00000197601 | PAR-CLIP |
| TMEM19 | ENSG00000139291 | Multiple |
| NEK4 | ENSG00000114904 | HITS-CLIP |
| TMEM87A | ENSG00000103978 | HITS-CLIP |
| BLOC1S6 | ENSG00000104164 | Multiple |
| SLC19A2 | ENSG00000117479 | Multiple |
| EAPP | ENSG00000129518 | PAR-CLIP |
| LRRC58 | ENSG00000163428 | PAR-CLIP |
| FAM8A1 | ENSG00000137414 | Multiple |
| HELZ | ENSG00000198265 | Multiple |
| MCC | ENSG00000171444 | PAR-CLIP |
| RGMB | ENSG00000174136 | PAR-CLIP |
| SACS | ENSG00000151835 | Multiple |
| C8orf4 | ENSG00000176907 | HITS-CLIP |
| ATP5A1 | ENSG00000152234 | HITS-CLIP |
| ITM2C | ENSG00000135916 | HITS-CLIP |
| PPAP2B | ENSG00000162407 | HITS-CLIP |
| CSNK1A1 | ENSG00000113712 | Multiple |

| | | |
|----------|-----------------|-----------|
| CGGBP1 | ENSG00000163320 | Multiple |
| LNPEP | ENSG00000113441 | HITS-CLIP |
| CEBPA | ENSG00000245848 | PAR-CLIP |
| SMU1 | ENSG00000122692 | HITS-CLIP |
| UBE3C | ENSG00000009335 | PAR-CLIP |
| PARVA | ENSG00000197702 | HITS-CLIP |
| CD46 | ENSG00000117335 | PAR-CLIP |
| RAPGEF6 | ENSG00000158987 | PAR-CLIP |
| MANF | ENSG00000145050 | PAR-CLIP |
| SMIM15 | ENSG00000188725 | HITS-CLIP |
| SACM1L | ENSG00000211456 | Multiple |
| PPM1A | ENSG00000100614 | PAR-CLIP |
| MYO9A | ENSG00000066933 | HITS-CLIP |
| CDC14B | ENSG00000081377 | HITS-CLIP |
| VCAN | ENSG00000038427 | HITS-CLIP |
| USP46 | ENSG00000109189 | PAR-CLIP |
| WSB1 | ENSG00000109046 | HITS-CLIP |
| WDR36 | ENSG00000134987 | PAR-CLIP |
| GPRC5A | ENSG00000013588 | PAR-CLIP |
| LIFR | ENSG00000113594 | Multiple |
| SUB1 | ENSG00000113387 | Multiple |
| DIAPH1 | ENSG00000131504 | Multiple |
| IGF2 | ENSG00000167244 | HITS-CLIP |
| C21orf91 | ENSG00000154642 | Multiple |
| ZDHHC4 | ENSG00000136247 | HITS-CLIP |
| GOLGA4 | ENSG00000144674 | HITS-CLIP |
| KLF3 | ENSG00000109787 | Multiple |
| ATXN1 | ENSG00000124788 | PAR-CLIP |
| ARID1A | ENSG00000117713 | Multiple |
| DEGS1 | ENSG00000143753 | PAR-CLIP |
| CLDND1 | ENSG00000080822 | Multiple |
| DENND5B | ENSG00000170456 | HITS-CLIP |
| ZNF778 | ENSG00000170100 | PAR-CLIP |
| IGF2R | ENSG00000197081 | Multiple |
| MYPOP | ENSG00000176182 | HITS-CLIP |
| ANKRD42 | ENSG00000137494 | Multiple |
| SLC16A1 | ENSG00000155380 | Multiple |
| EIF4A2 | ENSG00000156976 | HITS-CLIP |
| MTPN | ENSG00000105887 | HITS-CLIP |
| SKIL | ENSG00000136603 | Multiple |
| BIRC6 | ENSG00000115760 | HITS-CLIP |
| PCNXL2 | ENSG00000135749 | PAR-CLIP |
| DLG3 | ENSG00000082458 | HITS-CLIP |
| BMP2K | ENSG00000138756 | PAR-CLIP |

| | | |
|----------|-----------------|-----------|
| JRKL | ENSG00000183340 | HITS-CLIP |
| REL | ENSG00000162924 | Multiple |
| CEP350 | ENSG00000135837 | Multiple |
| FRMD6 | ENSG00000139926 | Multiple |
| HAUS6 | ENSG00000147874 | HITS-CLIP |
| MBD2 | ENSG00000134046 | PAR-CLIP |
| ARNTL2 | ENSG00000029153 | PAR-CLIP |
| ATRX | ENSG00000085224 | HITS-CLIP |
| ZFP41 | ENSG00000264668 | PAR-CLIP |
| SPRTN | ENSG00000010072 | PAR-CLIP |
| MAFK | ENSG00000198517 | PAR-CLIP |
| ZNF687 | ENSG00000143373 | HITS-CLIP |
| ZMYM2 | ENSG00000121741 | Multiple |
| APLP2 | ENSG00000084234 | Multiple |
| ENPP2 | ENSG00000136960 | Multiple |
| CD86 | ENSG00000114013 | PAR-CLIP |
| GDE1 | ENSG00000006007 | PAR-CLIP |
| GMPS | ENSG00000163655 | PAR-CLIP |
| HSP90AB1 | ENSG00000096384 | HITS-CLIP |
| ZBTB5 | ENSG00000168795 | PAR-CLIP |
| MYO5A | ENSG00000197535 | Multiple |
| SLC38A2 | ENSG00000134294 | Multiple |
| RNF19A | ENSG00000034677 | Multiple |
| ZNF100 | ENSG00000197020 | Multiple |
| PPP4R1 | ENSG00000154845 | Multiple |
| NSA2 | ENSG00000164346 | HITS-CLIP |
| KDM3B | ENSG00000120733 | PAR-CLIP |
| JMJD1C | ENSG00000171988 | HITS-CLIP |
| TIMP3 | ENSG00000100234 | HITS-CLIP |
| STAU2 | ENSG00000040341 | PAR-CLIP |
| H2AFZ | ENSG00000164032 | HITS-CLIP |
| GNG2 | ENSG00000186469 | HITS-CLIP |
| ATP11A | ENSG00000068650 | PAR-CLIP |
| HIATL1 | ENSG00000148110 | PAR-CLIP |
| CREBZF | ENSG00000137504 | PAR-CLIP |
| SFPQ | ENSG00000116560 | Multiple |
| DAG1 | ENSG00000173402 | Multiple |
| RPRD1B | ENSG00000101413 | HITS-CLIP |
| CFL2 | ENSG00000165410 | PAR-CLIP |
| SEC24A | ENSG00000113615 | Multiple |
| TEAD1 | ENSG00000187079 | Multiple |
| SCYL2 | ENSG00000136021 | HITS-CLIP |
| BAZ2A | ENSG00000076108 | Multiple |
| STRN3 | ENSG00000196792 | PAR-CLIP |

| | | |
|----------|-----------------|-----------|
| TGIF1 | ENSG00000177426 | HITS-CLIP |
| MOB4 | ENSG00000115540 | Multiple |
| STARD3NL | ENSG00000010270 | PAR-CLIP |
| FKBP8 | ENSG00000105701 | HITS-CLIP |
| MARCKSL1 | ENSG00000175130 | Multiple |
| POMT1 | ENSG00000130714 | HITS-CLIP |
| CPEB2 | ENSG00000137449 | Multiple |
| RORA | ENSG00000069667 | Multiple |
| SLC22A23 | ENSG00000137266 | HITS-CLIP |
| CDC42SE2 | ENSG00000158985 | Multiple |
| ZFAND6 | ENSG00000086666 | HITS-CLIP |
| C6ORF174 | ENSG00000255330 | PAR-CLIP |
| GLCC1 | ENSG00000106415 | HITS-CLIP |
| HDAC2 | ENSG00000196591 | PAR-CLIP |
| NRP1 | ENSG00000099250 | Multiple |
| NAA30 | ENSG00000139977 | HITS-CLIP |
| RFX3 | ENSG00000080298 | HITS-CLIP |
| MBD6 | ENSG00000166987 | HITS-CLIP |
| TST | ENSG00000128311 | PAR-CLIP |
| ARL5A | ENSG00000162980 | HITS-CLIP |
| PSMB2 | ENSG00000126067 | HITS-CLIP |
| DHTKD1 | ENSG00000181192 | Multiple |
| RAP2C | ENSG00000123728 | Multiple |
| TMPO | ENSG00000120802 | PAR-CLIP |
| PRIM1 | ENSG00000198056 | HITS-CLIP |
| DCUN1D3 | ENSG00000188215 | HITS-CLIP |
| JAZF1 | ENSG00000153814 | HITS-CLIP |
| GNPNAT1 | ENSG00000100522 | HITS-CLIP |
| ASCC3 | ENSG00000112249 | HITS-CLIP |
| LARP4 | ENSG00000161813 | HITS-CLIP |
| CUX1 | ENSG00000257923 | HITS-CLIP |
| PTPRJ | ENSG00000149177 | HITS-CLIP |
| TNFRSF21 | ENSG00000146072 | PAR-CLIP |
| ZBTB43 | ENSG00000169155 | Multiple |
| MNX1 | ENSG00000130675 | Multiple |
| RNASE4 | ENSG00000258818 | PAR-CLIP |
| RAC1 | ENSG00000136238 | PAR-CLIP |
| CHRAC1 | ENSG00000104472 | PAR-CLIP |
| C6orf62 | ENSG00000112308 | HITS-CLIP |
| OTUD4 | ENSG00000164164 | Multiple |
| STC2 | ENSG00000113739 | HITS-CLIP |
| MAK16 | ENSG00000198042 | PAR-CLIP |
| PEBP1 | ENSG00000089220 | HITS-CLIP |
| MESDC2 | ENSG00000117899 | HITS-CLIP |

| | | |
|----------|-----------------|-----------|
| FGF2 | ENSG00000138685 | PAR-CLIP |
| ATP6V1A | ENSG00000114573 | Multiple |
| RNF219 | ENSG00000152193 | Multiple |
| THAP2 | ENSG00000173451 | PAR-CLIP |
| KDM6B | ENSG00000132510 | Multiple |
| MCUR1 | ENSG00000050393 | HITS-CLIP |
| ZFP64 | ENSG00000020256 | Multiple |
| HOXC13 | ENSG00000123364 | HITS-CLIP |
| SESN2 | ENSG00000130766 | Multiple |
| SDE2 | ENSG00000143751 | HITS-CLIP |
| HSPA4L | ENSG00000164070 | Multiple |
| EBAG9 | ENSG00000147654 | HITS-CLIP |
| PSMD1 | ENSG00000173692 | HITS-CLIP |
| SURF4 | ENSG00000148248 | HITS-CLIP |
| C16orf72 | ENSG00000182831 | Multiple |
| MRGBP | ENSG00000101189 | Multiple |
| PYGO2 | ENSG00000163348 | Multiple |
| SSX2IP | ENSG00000117155 | PAR-CLIP |
| ZBTB21 | ENSG00000173276 | Multiple |
| DHX15 | ENSG00000109606 | PAR-CLIP |
| EMP2 | ENSG00000213853 | HITS-CLIP |
| DYNLL2 | ENSG00000264364 | HITS-CLIP |
| ZC3H11A | ENSG00000058673 | PAR-CLIP |
| ADNP | ENSG00000101126 | Multiple |
| MAD2L1 | ENSG00000164109 | Multiple |
| PSEN1 | ENSG00000080815 | Multiple |
| CCNY | ENSG00000108100 | Multiple |
| ZNF430 | ENSG00000118620 | PAR-CLIP |
| TPI1 | ENSG00000111669 | Multiple |
| EIF2S1 | ENSG00000134001 | PAR-CLIP |
| RRM1 | ENSG00000167325 | HITS-CLIP |
| RANBP2 | ENSG00000153201 | HITS-CLIP |
| MGRN1 | ENSG00000102858 | HITS-CLIP |
| POLR3K | ENSG00000161980 | PAR-CLIP |
| SP1 | ENSG00000185591 | PAR-CLIP |
| RARS | ENSG00000113643 | PAR-CLIP |
| OVGP1 | ENSG00000085465 | PAR-CLIP |
| FAM98A | ENSG00000119812 | HITS-CLIP |
| PSMB1 | ENSG00000008018 | PAR-CLIP |
| ACTN4 | ENSG00000130402 | Multiple |
| KRT80 | ENSG00000167767 | Multiple |
| FNIP1 | ENSG00000217128 | HITS-CLIP |
| SLC39A6 | ENSG00000141424 | HITS-CLIP |
| FUT11 | ENSG00000196968 | PAR-CLIP |

| | | |
|----------|-----------------|-----------|
| SMIM13 | ENSG00000224531 | Multiple |
| KLC1 | ENSG00000126214 | PAR-CLIP |
| NPTN | ENSG00000156642 | HITS-CLIP |
| PTPLAD1 | ENSG00000074696 | PAR-CLIP |
| ZNF451 | ENSG00000112200 | Multiple |
| GNPTAB | ENSG00000111670 | Multiple |
| TSPYL4 | ENSG00000187189 | PAR-CLIP |
| NFE2L2 | ENSG00000116044 | Multiple |
| EPC2 | ENSG00000135999 | PAR-CLIP |
| FAS | ENSG00000026103 | Multiple |
| ARID4B | ENSG00000054267 | HITS-CLIP |
| PRICKLE2 | ENSG00000163637 | HITS-CLIP |
| FOXF1 | ENSG00000103241 | Multiple |
| RPS6KA3 | ENSG00000177189 | HITS-CLIP |
| MKI67 | ENSG00000148773 | PAR-CLIP |
| SCOC | ENSG00000153130 | HITS-CLIP |
| FXR2 | ENSG00000129245 | PAR-CLIP |
| TGFBR3 | ENSG00000069702 | Multiple |
| UBE2F | ENSG00000184182 | PAR-CLIP |
| SUMO3 | ENSG00000184900 | HITS-CLIP |
| TLK1 | ENSG00000198586 | HITS-CLIP |
| CD200R1 | ENSG00000163606 | PAR-CLIP |
| EP300 | ENSG00000100393 | HITS-CLIP |
| POM121 | ENSG00000196313 | HITS-CLIP |
| PRDM2 | ENSG00000116731 | PAR-CLIP |
| ZNF714 | ENSG00000160352 | Multiple |
| DDAH1 | ENSG00000153904 | HITS-CLIP |
| GAB1 | ENSG00000109458 | HITS-CLIP |
| PGRMC2 | ENSG00000164040 | PAR-CLIP |
| MPRIP | ENSG00000133030 | HITS-CLIP |
| ACP2 | ENSG00000134575 | HITS-CLIP |
| TFB2M | ENSG00000162851 | Multiple |
| SLC44A1 | ENSG00000070214 | PAR-CLIP |
| DCUN1D1 | ENSG00000043093 | Multiple |
| CHSY1 | ENSG00000131873 | PAR-CLIP |
| GPCPD1 | ENSG00000125772 | HITS-CLIP |
| CEBPD | ENSG00000221869 | HITS-CLIP |
| FAM73A | ENSG00000180488 | Multiple |
| RASSF9 | ENSG00000198774 | Multiple |
| CDK17 | ENSG00000059758 | Multiple |
| ZBTB7A | ENSG00000178951 | PAR-CLIP |
| PLAG1 | ENSG00000181690 | PAR-CLIP |
| PUM2 | ENSG00000055917 | HITS-CLIP |
| NFIB | ENSG00000147862 | Multiple |

| | | |
|----------|-----------------|-----------|
| REV3L | ENSG00000009413 | Multiple |
| AKT3 | ENSG00000117020 | PAR-CLIP |
| CLDN4 | ENSG00000189143 | HITS-CLIP |
| GLTSCR1 | ENSG00000063169 | Multiple |
| PITPNB | ENSG00000180957 | Multiple |
| STON2 | ENSG00000140022 | HITS-CLIP |
| ATF7IP | ENSG00000171681 | Multiple |
| HPRT1 | ENSG00000165704 | HITS-CLIP |
| OSGIN2 | ENSG00000164823 | HITS-CLIP |
| CHMP3 | ENSG00000115561 | HITS-CLIP |
| HNRNPH2 | ENSG00000126945 | HITS-CLIP |
| TSPYL1 | ENSG00000189241 | Multiple |
| SCAF11 | ENSG00000139218 | HITS-CLIP |
| POLR1E | ENSG00000137054 | PAR-CLIP |
| MPHOSPH9 | ENSG00000051825 | PAR-CLIP |
| UBXN1 | ENSG00000162191 | HITS-CLIP |
| STAMBP | ENSG00000124356 | HITS-CLIP |
| UBE2D1 | ENSG00000072401 | Multiple |
| G3BP2 | ENSG00000138757 | HITS-CLIP |
| RBBP7 | ENSG00000102054 | Multiple |
| PABPN1 | ENSG00000100836 | PAR-CLIP |
| PCDH7 | ENSG00000169851 | HITS-CLIP |
| MFF | ENSG00000168958 | PAR-CLIP |
| AHCY | ENSG00000101444 | HITS-CLIP |
| ARCN1 | ENSG00000095139 | Multiple |
| KPNA6 | ENSG00000025800 | HITS-CLIP |
| EIF3M | ENSG00000149100 | HITS-CLIP |
| NCBP2 | ENSG00000114503 | Multiple |
| LONRF2 | ENSG00000170500 | PAR-CLIP |
| SPINT1 | ENSG00000166145 | HITS-CLIP |
| CYP1B1 | ENSG00000138061 | HITS-CLIP |
| ACSL4 | ENSG00000068366 | PAR-CLIP |
| UBE2D2 | ENSG00000131508 | Multiple |
| UBE2G1 | ENSG00000132388 | Multiple |
| SDC2 | ENSG00000169439 | HITS-CLIP |
| TFIP11 | ENSG00000100109 | HITS-CLIP |
| PAPD7 | ENSG00000112941 | HITS-CLIP |
| RLIM | ENSG00000131263 | HITS-CLIP |
| ZNF512B | ENSG00000196700 | HITS-CLIP |
| C8orf76 | ENSG00000189376 | Multiple |
| PLEKHA1 | ENSG00000107679 | Multiple |
| ZNRF2 | ENSG00000180233 | PAR-CLIP |
| ZNF585A | ENSG00000196967 | PAR-CLIP |
| METTL14 | ENSG00000145388 | Multiple |

| | | |
|----------|-----------------|-----------|
| NDC1 | ENSG00000058804 | HITS-CLIP |
| SLC7A2 | ENSG00000003989 | Multiple |
| TULP4 | ENSG00000130338 | PAR-CLIP |
| FMN2 | ENSG00000155816 | Multiple |
| MYCN | ENSG00000134323 | Multiple |
| 2-Sep | ENSG00000168385 | Multiple |
| DLX1 | ENSG00000144355 | PAR-CLIP |
| C22orf39 | ENSG00000242259 | HITS-CLIP |
| GFRA1 | ENSG00000151892 | Multiple |
| DIMT1 | ENSG00000086189 | Multiple |
| PKN2 | ENSG00000065243 | HITS-CLIP |
| TMEM126B | ENSG00000171204 | HITS-CLIP |
| USP7 | ENSG00000187555 | HITS-CLIP |
| APOOL | ENSG00000155008 | Multiple |
| MATR3 | ENSG00000015479 | PAR-CLIP |
| LRIF1 | ENSG00000121931 | Multiple |
| TMEM30A | ENSG00000112697 | HITS-CLIP |
| CDKN1A | ENSG00000124762 | Multiple |
| ERH | ENSG00000100632 | HITS-CLIP |
| STMN1 | ENSG00000117632 | Multiple |
| UHMK1 | ENSG00000152332 | Multiple |
| WTAP | ENSG00000146457 | Multiple |
| BDP1 | ENSG00000145734 | HITS-CLIP |
| CCNJ | ENSG00000107443 | PAR-CLIP |
| C3orf38 | ENSG00000179021 | Multiple |
| CLSPN | ENSG00000092853 | PAR-CLIP |
| HIAT1 | ENSG00000156875 | PAR-CLIP |
| TNRC6A | ENSG00000090905 | Multiple |
| MAP3K2 | ENSG00000169967 | PAR-CLIP |
| ARF6 | ENSG00000165527 | PAR-CLIP |
| USP9X | ENSG00000124486 | Multiple |
| MBNL1 | ENSG00000152601 | Multiple |
| PRC1 | ENSG00000198901 | PAR-CLIP |
| ZFYVE21 | ENSG00000100711 | HITS-CLIP |
| HEXIM1 | ENSG00000186834 | PAR-CLIP |
| TMEM201 | ENSG00000188807 | PAR-CLIP |
| MON2 | ENSG00000061987 | HITS-CLIP |
| PDXDC1 | ENSG00000179889 | PAR-CLIP |
| NDUFA2 | ENSG00000131495 | Multiple |
| ZFHX4 | ENSG00000091656 | Multiple |
| OXR1 | ENSG00000164830 | PAR-CLIP |
| CNEP1R1 | ENSG00000205423 | PAR-CLIP |
| TNFAIP1 | ENSG00000109079 | PAR-CLIP |
| ZBTB18 | ENSG00000179456 | PAR-CLIP |

| | | |
|-----------|-----------------|-----------|
| GFPT2 | ENSG00000131459 | HITS-CLIP |
| INA | ENSG00000148798 | PAR-CLIP |
| SUV39H2 | ENSG00000152455 | PAR-CLIP |
| SLC39A10 | ENSG00000196950 | HITS-CLIP |
| CKAP2 | ENSG00000136108 | PAR-CLIP |
| TGIF2 | ENSG00000118707 | PAR-CLIP |
| PTX3 | ENSG00000163661 | HITS-CLIP |
| OTULIN | ENSG00000154124 | HITS-CLIP |
| HNRNPA2B1 | ENSG00000122566 | Multiple |
| DCAF12 | ENSG00000198876 | HITS-CLIP |
| RPRD1A | ENSG00000141425 | Multiple |
| MOB3C | ENSG00000142961 | HITS-CLIP |
| ACYP1 | ENSG00000119640 | PAR-CLIP |
| ZBTB1 | ENSG00000126804 | PAR-CLIP |
| CCDC186 | ENSG00000165813 | HITS-CLIP |
| MORC3 | ENSG00000159256 | Multiple |
| BCL11B | ENSG00000127152 | PAR-CLIP |
| GORASP2 | ENSG00000115806 | HITS-CLIP |
| AASDHPPT | ENSG00000149313 | Multiple |
| BCOR | ENSG00000183337 | PAR-CLIP |
| DDX1 | ENSG00000079785 | HITS-CLIP |
| SHANK2 | ENSG00000162105 | HITS-CLIP |
| ZFP41 | ENSG00000181638 | PAR-CLIP |
| CCNI | ENSG00000118816 | Multiple |
| BTBD7 | ENSG00000011114 | Multiple |
| PHF13 | ENSG00000116273 | Multiple |
| CKS2 | ENSG00000123975 | HITS-CLIP |
| HIPK1 | ENSG00000163349 | Multiple |
| HIST2H2BE | ENSG00000184678 | Multiple |
| NRIP1 | ENSG00000180530 | HITS-CLIP |
| ZBTB34 | ENSG00000177125 | Multiple |
| RGL1 | ENSG00000143344 | Multiple |
| AP1G1 | ENSG00000166747 | Multiple |
| SMAD7 | ENSG00000101665 | HITS-CLIP |
| RAB8B | ENSG00000166128 | PAR-CLIP |
| CAAP1 | ENSG00000120159 | PAR-CLIP |
| POMP | ENSG00000132963 | HITS-CLIP |
| DCLRE1B | ENSG00000118655 | Multiple |
| ZNF367 | ENSG00000165244 | Multiple |
| TRIQK | ENSG00000205133 | PAR-CLIP |
| TSN | ENSG00000211460 | Multiple |
| ZFP36L2 | ENSG00000152518 | Multiple |
| TMEM192 | ENSG00000170088 | PAR-CLIP |
| NUPL2 | ENSG00000136243 | PAR-CLIP |

| | | |
|-----------|-----------------|-----------|
| KHNYN | ENSG00000100441 | PAR-CLIP |
| ABCC5 | ENSG00000114770 | PAR-CLIP |
| NKRF | ENSG00000186416 | HITS-CLIP |
| MAGT1 | ENSG00000102158 | HITS-CLIP |
| GATAD1 | ENSG00000157259 | PAR-CLIP |
| CMTM6 | ENSG00000091317 | Multiple |
| ABHD17C | ENSG00000136379 | PAR-CLIP |
| NR1D2 | ENSG00000174738 | Multiple |
| SGOL2 | ENSG00000163535 | HITS-CLIP |
| RIPK4 | ENSG00000183421 | HITS-CLIP |
| SRSF10 | ENSG00000188529 | PAR-CLIP |
| EXOC8 | ENSG00000116903 | PAR-CLIP |
| METTL3 | ENSG00000165819 | PAR-CLIP |
| GPR27 | ENSG00000170837 | HITS-CLIP |
| PDZD8 | ENSG00000165650 | HITS-CLIP |
| CLSTN1 | ENSG00000171603 | HITS-CLIP |
| XRCC5 | ENSG00000079246 | HITS-CLIP |
| KMT2E | ENSG00000005483 | Multiple |
| USP3 | ENSG00000140455 | HITS-CLIP |
| YAE1D1 | ENSG00000241127 | PAR-CLIP |
| PPARGC1B | ENSG00000155846 | HITS-CLIP |
| RAB11FIP1 | ENSG00000156675 | Multiple |
| CCNC | ENSG00000112237 | HITS-CLIP |
| ZNF618 | ENSG00000157657 | PAR-CLIP |
| GTF2A1 | ENSG00000165417 | HITS-CLIP |
| TANC2 | ENSG00000170921 | HITS-CLIP |
| TRIM71 | ENSG00000206557 | PAR-CLIP |
| PHIP | ENSG00000146247 | Multiple |
| CPEB3 | ENSG00000107864 | PAR-CLIP |
| ZC3H4 | ENSG00000130749 | PAR-CLIP |
| MTF2 | ENSG00000143033 | HITS-CLIP |
| HNRNPUL1 | ENSG00000105323 | Multiple |
| MYH6 | ENSG00000197616 | PAR-CLIP |
| TRIM25 | ENSG00000121060 | PAR-CLIP |
| CD55 | ENSG00000196352 | HITS-CLIP |
| TMEM55A | ENSG00000155099 | HITS-CLIP |
| RNF213 | ENSG00000173821 | Multiple |
| BBX | ENSG00000114439 | PAR-CLIP |
| OSMR | ENSG00000145623 | HITS-CLIP |
| CSRP2 | ENSG00000175183 | HITS-CLIP |
| TRIB1 | ENSG00000173334 | Multiple |
| MAPK1 | ENSG00000100030 | Multiple |
| MAP3K7 | ENSG00000135341 | Multiple |
| FNDC3A | ENSG00000102531 | HITS-CLIP |

| | | |
|-----------|-----------------|-----------|
| SLAIN2 | ENSG00000109171 | PAR-CLIP |
| NUP205 | ENSG00000155561 | Multiple |
| FGF1 | ENSG00000113578 | HITS-CLIP |
| NUS1 | ENSG00000153989 | Multiple |
| NECAB1 | ENSG00000123119 | HITS-CLIP |
| C5orf15 | ENSG00000113583 | PAR-CLIP |
| MAPK6 | ENSG00000069956 | Multiple |
| LATS2 | ENSG00000150457 | PAR-CLIP |
| LNX2 | ENSG00000139517 | HITS-CLIP |
| MED6 | ENSG00000133997 | Multiple |
| PTGFRN | ENSG00000134247 | HITS-CLIP |
| FBXW11 | ENSG00000072803 | HITS-CLIP |
| ZNF146 | ENSG00000167635 | PAR-CLIP |
| CSF1 | ENSG00000184371 | PAR-CLIP |
| RANBP9 | ENSG00000010017 | Multiple |
| AP3M1 | ENSG00000185009 | PAR-CLIP |
| GULP1 | ENSG00000144366 | HITS-CLIP |
| SMCO4 | ENSG00000166002 | HITS-CLIP |
| KMT2C | ENSG00000055609 | Multiple |
| TBPL1 | ENSG00000028839 | HITS-CLIP |
| MGAT4A | ENSG00000071073 | Multiple |
| HELLS | ENSG00000119969 | PAR-CLIP |
| GCNT1 | ENSG00000187210 | PAR-CLIP |
| HOXA10 | ENSG00000253293 | HITS-CLIP |
| C7orf31 | ENSG00000153790 | Multiple |
| PPM1D | ENSG00000170836 | HITS-CLIP |
| USP22 | ENSG00000124422 | Multiple |
| ZSCAN9 | ENSG00000137185 | PAR-CLIP |
| PATL1 | ENSG00000166889 | PAR-CLIP |
| CPNE8 | ENSG00000139117 | PAR-CLIP |
| SLC23A2 | ENSG00000089057 | Multiple |
| LYSMD3 | ENSG00000176018 | PAR-CLIP |
| DIS3 | ENSG00000083520 | PAR-CLIP |
| TAF3 | ENSG00000165632 | PAR-CLIP |
| COL5A2 | ENSG00000204262 | HITS-CLIP |
| C17orf104 | ENSG00000180336 | PAR-CLIP |
| GNB4 | ENSG00000114450 | PAR-CLIP |
| RANBP6 | ENSG00000137040 | HITS-CLIP |
| SLMO2 | ENSG00000101166 | HITS-CLIP |
| ZNF623 | ENSG00000183309 | Multiple |
| TOP1 | ENSG00000198900 | PAR-CLIP |
| ZNF675 | ENSG00000197372 | HITS-CLIP |
| RNF139 | ENSG00000170881 | HITS-CLIP |
| CCDC113 | ENSG00000103021 | Multiple |

| | | |
|-----------|-----------------|--------------|
| STARD4 | ENSG00000164211 | PAR-CLIP |
| TNKS | ENSG00000173273 | Multiple |
| TBL1XR1 | ENSG00000177565 | HITS-CLIP |
| ERO1LB | ENSG00000086619 | PAR-CLIP |
| SETX | ENSG00000107290 | PAR-CLIP |
| SPOP | ENSG00000121067 | PAR-CLIP |
| DUSP1 | ENSG00000120129 | Multiple |
| RNASE1 | ENSG00000129538 | HITS-CLIP |
| IREB2 | ENSG00000136381 | PAR-CLIP |
| BZW2 | ENSG00000136261 | HITS-CLIP |
| SECISBP2L | ENSG00000138593 | PAR-CLIP |
| TGFBR2 | ENSG00000163513 | HITS-CLIP |
| SLC1A5 | ENSG00000105281 | PAR-CLIP |
| MEF2A | ENSG00000068305 | Multiple |
| BICC1 | ENSG00000122870 | HITS-CLIP |
| HIVEP3 | ENSG00000127124 | PAR-CLIP |
| RAB14 | ENSG00000119396 | PAR-CLIP |
| IRF1 | ENSG00000125347 | PAR-CLIP |
| ADRB1 | ENSG00000043591 | Multiple |
| MTSS1L | ENSG00000132613 | HITS-CLIP |
| PVRL1 | ENSG00000110400 | HITS-CLIP |
| RPL15 | ENSG00000174748 | PAR-CLIP |
| TSPAN13 | ENSG00000106537 | HITS-CLIP |
| NPC1L1 | ENSG00000015520 | HITS-CLIP |
| ARHGAP5 | ENSG00000100852 | PAR-CLIP |
| RAPH1 | ENSG00000173166 | Multiple |
| KHDRBS1 | ENSG00000121774 | HITS-CLIP |
| RPA2 | ENSG00000117748 | PAR-CLIP |
| USH2A | ENSG00000042781 | PAR-CLIP |
| AKAP11 | ENSG00000023516 | Multiple |
| SP9 | ENSG00000217236 | PAR-CLIP |
| BAG5 | ENSG00000166170 | HITS-CLIP |
| SLC39A14 | ENSG00000104635 | HITS-CLIP |
| TOMM6 | ENSG00000214736 | Multiple |
| LPGAT1 | ENSG00000123684 | Multiple |
| PRR11 | ENSG00000068489 | HITS-CLIP |
| TNRC6C | ENSG00000078687 | Multiple |
| RNF216 | ENSG00000011275 | Multiple |
| FAM110C | ENSG00000184731 | PAR-CLIP |
| MEIS1 | ENSG00000143995 | Western Blot |
| KIAA1551 | ENSG00000174718 | PAR-CLIP |
| PNISR | ENSG00000132424 | PAR-CLIP |
| TMBIM6 | ENSG00000139644 | PAR-CLIP |
| ARHGAP12 | ENSG00000165322 | PAR-CLIP |

| | | |
|----------------|-----------------|-----------|
| FLVCR1 | ENSG00000162769 | PAR-CLIP |
| EIF4G2 | ENSG00000110321 | Multiple |
| BCL2L11 | ENSG00000153094 | Multiple |
| GTF2E1 | ENSG00000153767 | PAR-CLIP |
| NR2F2 | ENSG00000185551 | PAR-CLIP |
| KIF5B | ENSG00000170759 | Multiple |
| ZNF740 | ENSG00000139651 | PAR-CLIP |
| MYO1B | ENSG00000128641 | PAR-CLIP |
| LIN7C | ENSG00000148943 | Multiple |
| GNAI1 | ENSG00000127955 | HITS-CLIP |
| MLLT10 | ENSG00000078403 | HITS-CLIP |
| ARHGEF3 | ENSG00000163947 | HITS-CLIP |
| USP34 | ENSG00000115464 | PAR-CLIP |
| EFHD1 | ENSG00000115468 | PAR-CLIP |
| CD44 | ENSG00000026508 | PAR-CLIP |
| MAP1B | ENSG00000131711 | PAR-CLIP |
| CD47 | ENSG00000196776 | PAR-CLIP |
| DHX33 | ENSG00000005100 | HITS-CLIP |
| SLC29A2 | ENSG00000174669 | HITS-CLIP |
| UBR4 | ENSG00000127481 | HITS-CLIP |
| ZKSCAN1 | ENSG00000106261 | HITS-CLIP |
| LIG4 | ENSG00000174405 | HITS-CLIP |
| PPP1CB | ENSG00000213639 | HITS-CLIP |
| TSHZ2 | ENSG00000182463 | HITS-CLIP |
| SYNCRIP | ENSG00000135316 | Multiple |
| MEX3C | ENSG00000176624 | PAR-CLIP |
| YTHDC1 | ENSG00000083896 | PAR-CLIP |
| SCFD2 | ENSG00000184178 | HITS-CLIP |
| INO80D | ENSG00000114933 | Multiple |
| PANK1 | ENSG00000152782 | PAR-CLIP |
| CUL4B | ENSG00000158290 | PAR-CLIP |
| NDEL1 | ENSG00000166579 | Multiple |
| TUSC2 | ENSG00000114383 | Multiple |
| C7orf55-LUC7L2 | ENSG00000146963 | PAR-CLIP |
| TXNIP | ENSG00000265972 | Multiple |
| PCDHB16 | ENSG00000272674 | HITS-CLIP |
| ZNF792 | ENSG00000180884 | Multiple |
| VAMP3 | ENSG00000049245 | PAR-CLIP |
| SYNRG | ENSG00000275066 | HITS-CLIP |
| PNLIPRP2 | ENSG00000266200 | HITS-CLIP |
| ZFP91 | ENSG00000186660 | Multiple |
| CALU | ENSG00000128595 | Multiple |
| EFNB2 | ENSG00000125266 | Multiple |
| CCNT2 | ENSG00000082258 | PAR-CLIP |

| | | |
|----------|-----------------|-----------|
| RTN4 | ENSG00000115310 | Multiple |
| C17orf85 | ENSG00000074356 | HITS-CLIP |
| DDI2 | ENSG00000197312 | HITS-CLIP |
| RPA1 | ENSG00000132383 | PAR-CLIP |
| VPS13C | ENSG00000129003 | HITS-CLIP |
| BMPER | ENSG00000164619 | HITS-CLIP |
| RBM14 | ENSG00000239306 | HITS-CLIP |
| NSL1 | ENSG00000117697 | HITS-CLIP |
| POU2F1 | ENSG00000143190 | HITS-CLIP |
| SFT2D1 | ENSG00000198818 | HITS-CLIP |
| CDC6 | ENSG00000094804 | HITS-CLIP |
| BLZF1 | ENSG00000117475 | PAR-CLIP |
| DUSP4 | ENSG00000120875 | HITS-CLIP |
| C22orf46 | ENSG00000184208 | HITS-CLIP |
| TMEM50A | ENSG00000183726 | Multiple |
| FOXJ2 | ENSG00000065970 | HITS-CLIP |
| SERTAD3 | ENSG00000167565 | HITS-CLIP |
| PPP1R37 | ENSG00000104866 | Multiple |
| PICALM | ENSG00000073921 | HITS-CLIP |
| JARID2 | ENSG00000008083 | Multiple |
| MTA3 | ENSG00000057935 | HITS-CLIP |
| CTDSP1 | ENSG00000144579 | HITS-CLIP |
| FAM120A | ENSG00000048828 | HITS-CLIP |
| SOX4 | ENSG00000124766 | Multiple |
| CDIP1 | ENSG00000089486 | HITS-CLIP |
| PRKCA | ENSG00000154229 | HITS-CLIP |
| CAMSAP3 | ENSG00000076826 | HITS-CLIP |
| VWA9 | ENSG00000138614 | Multiple |
| TUBGCP3 | ENSG00000126216 | HITS-CLIP |
| SPARC | ENSG00000113140 | HITS-CLIP |
| UGCG | ENSG00000148154 | Multiple |
| B3GNT5 | ENSG00000176597 | HITS-CLIP |
| RREB1 | ENSG00000124782 | HITS-CLIP |
| PDCL3 | ENSG00000115539 | HITS-CLIP |
| CEBPG | ENSG00000153879 | Multiple |
| SIGMAR1 | ENSG00000147955 | HITS-CLIP |
| EFCAB14 | ENSG00000159658 | HITS-CLIP |
| HS1BP3 | ENSG00000118960 | HITS-CLIP |
| NBL1 | ENSG00000158747 | HITS-CLIP |
| TBC1D13 | ENSG00000107021 | HITS-CLIP |
| CDH13 | ENSG00000140945 | HITS-CLIP |
| MTERF | ENSG00000127989 | HITS-CLIP |
| NPDC1 | ENSG00000107281 | HITS-CLIP |
| ADAMTS4 | ENSG00000158859 | Multiple |

| | | |
|---------|-----------------|-----------|
| SNX18 | ENSG00000178996 | Multiple |
| ADAMTS5 | ENSG00000154736 | Multiple |
| ERBB2 | ENSG00000141736 | Multiple |
| LACTB | ENSG00000103642 | HITS-CLIP |
| FAM53B | ENSG00000189319 | HITS-CLIP |
| IRF4 | ENSG00000137265 | HITS-CLIP |
| MANEA | ENSG00000172469 | HITS-CLIP |
| OAZ1 | ENSG00000104904 | PAR-CLIP |
| RAP2B | ENSG00000181467 | HITS-CLIP |
| ARID3A | ENSG00000116017 | Multiple |
| FAM129B | ENSG00000136830 | HITS-CLIP |
| SLC6A6 | ENSG00000131389 | HITS-CLIP |
| SIPA1L3 | ENSG00000105738 | HITS-CLIP |
| CNOT11 | ENSG00000158435 | HITS-CLIP |
| MEGF9 | ENSG00000106780 | Multiple |
| SSH2 | ENSG00000141298 | HITS-CLIP |
| GRB10 | ENSG00000106070 | PAR-CLIP |
| PHF20L1 | ENSG00000129292 | HITS-CLIP |
| TTL | ENSG00000114999 | HITS-CLIP |
| BCL9 | ENSG00000116128 | HITS-CLIP |
| STOX2 | ENSG00000173320 | Multiple |
| TACC2 | ENSG00000138162 | HITS-CLIP |
| CDR2L | ENSG00000109089 | Multiple |
| EZR | ENSG00000092820 | HITS-CLIP |
| YAP1 | ENSG00000137693 | HITS-CLIP |
| HMGB3 | ENSG00000029993 | HITS-CLIP |
| SSR1 | ENSG00000124783 | HITS-CLIP |
| ELF2 | ENSG00000109381 | HITS-CLIP |
| AREL1 | ENSG00000119682 | HITS-CLIP |
| C1orf43 | ENSG00000143612 | HITS-CLIP |
| RPS28 | ENSG00000233927 | HITS-CLIP |
| AFMID | ENSG00000183077 | HITS-CLIP |
| ALPK3 | ENSG00000136383 | HITS-CLIP |
| FUS | ENSG00000089280 | Multiple |
| NELFCD | ENSG00000101158 | HITS-CLIP |
| PGR | ENSG00000082175 | HITS-CLIP |
| FAM126B | ENSG00000155744 | HITS-CLIP |
| PWWP2A | ENSG00000170234 | Multiple |
| TMED2 | ENSG00000086598 | PAR-CLIP |
| TOR2A | ENSG00000160404 | Multiple |
| ALDH4A1 | ENSG00000159423 | HITS-CLIP |
| POLR2C | ENSG00000102978 | PAR-CLIP |
| ZNF12 | ENSG00000164631 | HITS-CLIP |
| POU3F2 | ENSG00000184486 | PAR-CLIP |

| | | |
|--------------|-----------------|-----------|
| NXPE3 | ENSG00000144815 | PAR-CLIP |
| ACSS1 | ENSG00000154930 | HITS-CLIP |
| USP36 | ENSG00000055483 | HITS-CLIP |
| BCL3 | ENSG00000069399 | HITS-CLIP |
| AMFR | ENSG00000159461 | HITS-CLIP |
| H2AFX | ENSG00000188486 | Multiple |
| NLRP2 | ENSG00000022556 | HITS-CLIP |
| CRKL | ENSG00000099942 | HITS-CLIP |
| ATXN2L | ENSG00000168488 | HITS-CLIP |
| MTHFD2 | ENSG00000065911 | HITS-CLIP |
| CD59 | ENSG00000085063 | Multiple |
| PIWIL3 | ENSG00000184571 | PAR-CLIP |
| RASA2 | ENSG00000155903 | HITS-CLIP |
| ZNF775 | ENSG00000196456 | PAR-CLIP |
| GLDC | ENSG00000178445 | HITS-CLIP |
| GTF3C5 | ENSG00000148308 | HITS-CLIP |
| MMS22L | ENSG00000146263 | HITS-CLIP |
| KIF1B | ENSG00000054523 | HITS-CLIP |
| TMED7-TICAM2 | ENSG00000251201 | HITS-CLIP |
| ZFYVE1 | ENSG00000165861 | Multiple |
| BTBD1 | ENSG00000064726 | Multiple |
| NT5C2 | ENSG00000076685 | HITS-CLIP |
| MBTPS1 | ENSG00000140943 | HITS-CLIP |
| WDR55 | ENSG00000120314 | PAR-CLIP |
| WARS | ENSG00000140105 | Multiple |
| BRPF3 | ENSG00000096070 | Multiple |
| HMGCR | ENSG00000113161 | HITS-CLIP |
| SLC25A12 | ENSG00000115840 | PAR-CLIP |
| SLC35G1 | ENSG00000176273 | PAR-CLIP |
| EFEMP1 | ENSG00000115380 | HITS-CLIP |
| HMGA2 | ENSG00000149948 | HITS-CLIP |
| TMEM101 | ENSG00000091947 | PAR-CLIP |
| C21orf58 | ENSG00000160298 | HITS-CLIP |
| AGO3 | ENSG00000126070 | PAR-CLIP |
| BTN3A3 | ENSG00000111801 | PAR-CLIP |
| PIP5K1C | ENSG00000186111 | HITS-CLIP |
| KIAA1522 | ENSG00000162522 | Multiple |
| ETV3 | ENSG00000117036 | Multiple |
| ARMCX4 | ENSG00000196440 | HITS-CLIP |
| PRRG4 | ENSG00000135378 | PAR-CLIP |
| GLRB | ENSG00000109738 | HITS-CLIP |
| LENG8 | ENSG00000167615 | Multiple |
| PAK2 | ENSG00000180370 | Multiple |
| TMEM248 | ENSG00000106609 | HITS-CLIP |

| | | |
|----------|-----------------|-----------|
| TPR | ENSG00000047410 | HITS-CLIP |
| WNT10B | ENSG00000169884 | HITS-CLIP |
| MTUS1 | ENSG00000129422 | PAR-CLIP |
| REST | ENSG00000084093 | Multiple |
| PPP2CA | ENSG00000113575 | PAR-CLIP |
| CEP128 | ENSG00000100629 | HITS-CLIP |
| GTF3C3 | ENSG00000119041 | HITS-CLIP |
| BCL2L13 | ENSG00000099968 | HITS-CLIP |
| ADAR | ENSG00000160710 | Multiple |
| COPS7B | ENSG00000144524 | Multiple |
| PLAGL2 | ENSG00000126003 | Multiple |
| ZDBF2 | ENSG00000204186 | HITS-CLIP |
| AAED1 | ENSG00000158122 | Multiple |
| LRRC8A | ENSG00000136802 | HITS-CLIP |
| NR6A1 | ENSG00000148200 | Multiple |
| YIPF6 | ENSG00000181704 | HITS-CLIP |
| SORT1 | ENSG00000134243 | HITS-CLIP |
| CHD8 | ENSG00000100888 | Multiple |
| KIF3A | ENSG00000131437 | PAR-CLIP |
| IST1 | ENSG00000182149 | Multiple |
| 11-Sep | ENSG00000138758 | HITS-CLIP |
| OGT | ENSG00000147162 | HITS-CLIP |
| C2CD2L | ENSG00000172375 | PAR-CLIP |
| MAZ | ENSG00000103495 | Multiple |
| ARHGEF12 | ENSG00000196914 | HITS-CLIP |
| SGPL1 | ENSG00000166224 | Multiple |
| SZRD1 | ENSG00000055070 | Multiple |
| PPP1CC | ENSG00000186298 | PAR-CLIP |
| DUSP6 | ENSG00000139318 | Multiple |
| NUP133 | ENSG00000069248 | HITS-CLIP |
| MRPL34 | ENSG00000130312 | PAR-CLIP |
| CAPNS1 | ENSG00000126247 | Multiple |
| GDNF | ENSG00000168621 | HITS-CLIP |
| ACTG1 | ENSG00000184009 | Multiple |
| FOXM1 | ENSG00000111206 | HITS-CLIP |
| ZNF260 | ENSG00000254004 | PAR-CLIP |
| SATB2 | ENSG00000119042 | PAR-CLIP |
| PXN | ENSG00000089159 | HITS-CLIP |
| TCEAL8 | ENSG00000180964 | HITS-CLIP |
| NUP210 | ENSG00000132182 | Multiple |
| MAPKAP1 | ENSG00000119487 | HITS-CLIP |
| HERPUD1 | ENSG00000051108 | Multiple |
| ANPEP | ENSG00000166825 | HITS-CLIP |
| SPRED1 | ENSG00000166068 | PAR-CLIP |

| | | |
|----------|-----------------|-----------|
| SH3BP2 | ENSG00000087266 | PAR-CLIP |
| PTPN14 | ENSG00000152104 | Multiple |
| ZFC3H1 | ENSG00000133858 | HITS-CLIP |
| TMEM63A | ENSG00000196187 | PAR-CLIP |
| PKM | ENSG00000067225 | HITS-CLIP |
| SNRK | ENSG00000163788 | Multiple |
| PCTP | ENSG00000141179 | Multiple |
| NOP10 | ENSG00000182117 | HITS-CLIP |
| STX3 | ENSG00000166900 | Multiple |
| WDR45 | ENSG00000196998 | HITS-CLIP |
| TPCN2 | ENSG00000162341 | PAR-CLIP |
| LOXL2 | ENSG00000134013 | HITS-CLIP |
| PTPRD | ENSG00000153707 | HITS-CLIP |
| NBEAL2 | ENSG00000160796 | HITS-CLIP |
| ZNF121 | ENSG00000197961 | HITS-CLIP |
| ANKRD50 | ENSG00000151458 | PAR-CLIP |
| CDCA8 | ENSG00000134690 | Multiple |
| STK11 | ENSG00000118046 | Multiple |
| GPR180 | ENSG00000152749 | HITS-CLIP |
| HIST1H4C | ENSG00000197061 | Multiple |
| STARD8 | ENSG00000130052 | CLASH |
| WAC | ENSG00000095787 | HITS-CLIP |
| IQGAP1 | ENSG00000140575 | HITS-CLIP |
| WNK1 | ENSG00000060237 | CLASH |
| MNT | ENSG00000070444 | HITS-CLIP |
| RUFY3 | ENSG00000018189 | Multiple |
| PLA2G4F | ENSG00000168907 | CLASH |
| GSE1 | ENSG00000131149 | PAR-CLIP |
| GPATCH2 | ENSG00000092978 | Multiple |
| HOXB5 | ENSG00000120075 | HITS-CLIP |
| DDX42 | ENSG00000198231 | PAR-CLIP |
| CA12 | ENSG00000074410 | Multiple |
| SPATA13 | ENSG00000182957 | HITS-CLIP |
| ZNF562 | ENSG00000171466 | HITS-CLIP |
| MGA | ENSG00000174197 | HITS-CLIP |
| CDH11 | ENSG00000140937 | HITS-CLIP |
| CDCA4 | ENSG00000170779 | HITS-CLIP |
| FBXO45 | ENSG00000174013 | PAR-CLIP |
| SMEK1 | ENSG00000100796 | Multiple |
| TMEM138 | ENSG00000149483 | PAR-CLIP |
| GIN3 | ENSG00000181938 | PAR-CLIP |
| PKD1 | ENSG00000008710 | HITS-CLIP |
| NBN | ENSG00000104320 | HITS-CLIP |
| VPS36 | ENSG00000136100 | Multiple |

| | | |
|---------|-----------------|-----------|
| IER2 | ENSG00000160888 | PAR-CLIP |
| AKAP1 | ENSG00000121057 | PAR-CLIP |
| AFAP1 | ENSG00000196526 | HITS-CLIP |
| CPSF6 | ENSG00000111605 | HITS-CLIP |
| ARID3B | ENSG00000179361 | Multiple |
| CDKN1B | ENSG00000111276 | PAR-CLIP |
| MYH9 | ENSG00000100345 | HITS-CLIP |
| CUL1 | ENSG00000055130 | HITS-CLIP |
| RPS6KA1 | ENSG00000117676 | Multiple |
| DDX6 | ENSG00000110367 | PAR-CLIP |
| ANKIB1 | ENSG00000001629 | HITS-CLIP |
| MDFIC | ENSG00000135272 | HITS-CLIP |
| AGO2 | ENSG00000123908 | Multiple |
| OTUB1 | ENSG00000167770 | HITS-CLIP |
| LIN28B | ENSG00000187772 | PAR-CLIP |
| RAB2A | ENSG00000104388 | PAR-CLIP |
| ZSCAN29 | ENSG00000140265 | Multiple |
| EPG5 | ENSG00000152223 | HITS-CLIP |
| CSDE1 | ENSG00000009307 | Multiple |
| AXIN1 | ENSG00000103126 | PAR-CLIP |
| LMNB1 | ENSG00000113368 | HITS-CLIP |
| CDKN2B | ENSG00000147883 | HITS-CLIP |
| TIAM1 | ENSG00000156299 | PAR-CLIP |
| FBXL20 | ENSG00000108306 | HITS-CLIP |
| ATP1B1 | ENSG00000143153 | HITS-CLIP |
| YWHAB | ENSG00000166913 | HITS-CLIP |
| TNFSF15 | ENSG00000181634 | HITS-CLIP |
| KLHL21 | ENSG00000162413 | HITS-CLIP |
| THRA | ENSG00000126351 | HITS-CLIP |
| SIRT5 | ENSG00000124523 | HITS-CLIP |
| GON4L | ENSG00000116580 | HITS-CLIP |
| DNAJC14 | ENSG00000135392 | Multiple |
| CNST | ENSG00000162852 | Multiple |
| MINK1 | ENSG00000141503 | PAR-CLIP |
| DDX17 | ENSG00000100201 | Multiple |
| PABPC4 | ENSG00000090621 | CLASH |
| DOCK11 | ENSG00000147251 | HITS-CLIP |
| HIST4H4 | ENSG00000197837 | HITS-CLIP |
| P4HB | ENSG00000185624 | Multiple |
| UGP2 | ENSG00000169764 | HITS-CLIP |
| NME2 | ENSG00000011052 | CLASH |
| ZFH3 | ENSG00000140836 | Multiple |
| TPX2 | ENSG00000088325 | HITS-CLIP |
| ARF1 | ENSG00000143761 | PAR-CLIP |

| | | |
|----------|-----------------|-----------|
| COX7A2L | ENSG00000115944 | HITS-CLIP |
| CLTC | ENSG00000141367 | HITS-CLIP |
| C6orf48 | ENSG00000204387 | HITS-CLIP |
| ERCC6 | ENSG00000225830 | HITS-CLIP |
| IKZF4 | ENSG00000123411 | HITS-CLIP |
| PTCH2 | ENSG00000117425 | PAR-CLIP |
| NDRG1 | ENSG00000104419 | HITS-CLIP |
| IKZF3 | ENSG00000161405 | HITS-CLIP |
| ZNF768 | ENSG00000169957 | HITS-CLIP |
| LRIG1 | ENSG00000144749 | HITS-CLIP |
| EVC | ENSG00000072840 | HITS-CLIP |
| TAF6 | ENSG00000106290 | HITS-CLIP |
| KDM2A | ENSG00000173120 | HITS-CLIP |
| KIAA0196 | ENSG00000164961 | PAR-CLIP |
| MTMR2 | ENSG00000087053 | HITS-CLIP |
| QSER1 | ENSG00000060749 | PAR-CLIP |
| HNRNPU | ENSG00000153187 | HITS-CLIP |
| IER3IP1 | ENSG00000134049 | Multiple |
| ATP6V1G1 | ENSG00000136888 | HITS-CLIP |
| RNF19B | ENSG00000116514 | HITS-CLIP |
| SWSAP1 | ENSG00000173928 | PAR-CLIP |
| SPTAN1 | ENSG00000197694 | HITS-CLIP |
| VPS37B | ENSG00000139722 | PAR-CLIP |
| DDX3X | ENSG00000215301 | Multiple |
| IGF2BP1 | ENSG00000159217 | Multiple |
| SLC35A4 | ENSG00000176087 | Multiple |
| ECI2 | ENSG00000198721 | HITS-CLIP |
| SERINC1 | ENSG00000111897 | PAR-CLIP |
| TNFRSF1B | ENSG00000028137 | HITS-CLIP |
| STXBP3 | ENSG00000116266 | HITS-CLIP |
| MORF4L2 | ENSG00000123562 | Multiple |
| RAD51D | ENSG00000185379 | HITS-CLIP |
| RSPH3 | ENSG00000130363 | HITS-CLIP |
| APP | ENSG00000142192 | HITS-CLIP |
| EPAS1 | ENSG00000116016 | HITS-CLIP |
| 7-Mar | ENSG00000136536 | Multiple |
| TAOK1 | ENSG00000160551 | PAR-CLIP |
| ALG9 | ENSG00000086848 | Multiple |
| CAPZA1 | ENSG00000116489 | PAR-CLIP |
| SV2A | ENSG00000159164 | Multiple |
| NSUN3 | ENSG00000178694 | HITS-CLIP |
| PDS5A | ENSG00000121892 | HITS-CLIP |
| ADIPOR2 | ENSG00000006831 | HITS-CLIP |
| FAM60A | ENSG00000139146 | HITS-CLIP |

| | | |
|----------|-----------------|-----------|
| CAPRIN1 | ENSG00000135387 | HITS-CLIP |
| SLC3A2 | ENSG00000168003 | Multiple |
| FAT4 | ENSG00000196159 | HITS-CLIP |
| VPS13A | ENSG00000197969 | HITS-CLIP |
| NCOA3 | ENSG00000124151 | HITS-CLIP |
| WDR5 | ENSG00000196363 | Multiple |
| LMTK3 | ENSG00000142235 | HITS-CLIP |
| DPM2 | ENSG00000136908 | HITS-CLIP |
| EIF3K | ENSG00000178982 | HITS-CLIP |
| GIGYF1 | ENSG00000146830 | PAR-CLIP |
| YWHAQ | ENSG00000134308 | HITS-CLIP |
| NCL | ENSG00000115053 | PAR-CLIP |
| FAM222B | ENSG00000173065 | PAR-CLIP |
| MPP5 | ENSG00000072415 | HITS-CLIP |
| RHOV | ENSG00000104140 | HITS-CLIP |
| SLC38A9 | ENSG00000177058 | HITS-CLIP |
| C15orf39 | ENSG00000167173 | HITS-CLIP |
| MFHAS1 | ENSG00000147324 | Multiple |
| CNP | ENSG00000173786 | HITS-CLIP |
| ZNF543 | ENSG00000178229 | Multiple |
| FAM178A | ENSG00000119906 | HITS-CLIP |
| RPP14 | ENSG00000163684 | Multiple |
| SEC61A2 | ENSG00000065665 | HITS-CLIP |
| MBD3 | ENSG00000071655 | HITS-CLIP |
| PCSK7 | ENSG00000160613 | HITS-CLIP |
| VAR5 | ENSG00000204394 | PAR-CLIP |
| HIF1AN | ENSG00000166135 | Multiple |
| ADAM17 | ENSG00000151694 | Multiple |
| EEF1D | ENSG00000104529 | Multiple |
| MED1 | ENSG00000125686 | Multiple |
| BCAT1 | ENSG00000060982 | HITS-CLIP |
| GRN | ENSG00000030582 | Multiple |
| UGT1A1 | ENSG00000242366 | HITS-CLIP |
| AMD1 | ENSG00000123505 | HITS-CLIP |
| CREB1 | ENSG00000118260 | PAR-CLIP |
| SS18 | ENSG00000141380 | HITS-CLIP |
| BOD1L2 | ENSG00000228075 | HITS-CLIP |
| ISYNA1 | ENSG00000105655 | HITS-CLIP |
| PRR14L | ENSG00000183530 | Multiple |
| CHPF2 | ENSG00000033100 | HITS-CLIP |
| KLF13 | ENSG00000169926 | Multiple |
| EDEM3 | ENSG00000116406 | HITS-CLIP |
| CD81 | ENSG00000110651 | HITS-CLIP |
| MTR | ENSG00000116984 | HITS-CLIP |

| | | |
|-----------|-----------------|-----------|
| MLLT4 | ENSG00000130396 | Multiple |
| ATP6V1B2 | ENSG00000147416 | HITS-CLIP |
| SLC7A1 | ENSG00000139514 | Multiple |
| ARID2 | ENSG00000189079 | Multiple |
| SOGA1 | ENSG00000149639 | Multiple |
| FURIN | ENSG00000140564 | HITS-CLIP |
| EIF2S3 | ENSG00000130741 | HITS-CLIP |
| ZBTB37 | ENSG00000185278 | PAR-CLIP |
| MLEC | ENSG00000110917 | HITS-CLIP |
| ZNF385A | ENSG00000161642 | Multiple |
| SH3BP4 | ENSG00000130147 | PAR-CLIP |
| LARP1 | ENSG00000155506 | Multiple |
| ITFG2 | ENSG00000111203 | HITS-CLIP |
| DMWD | ENSG00000185800 | HITS-CLIP |
| PPL | ENSG00000118898 | HITS-CLIP |
| TRAK2 | ENSG00000115993 | HITS-CLIP |
| CSRNP1 | ENSG00000144655 | HITS-CLIP |
| DUS1L | ENSG00000169718 | Multiple |
| PMAIP1 | ENSG00000141682 | Multiple |
| POP7 | ENSG00000172336 | HITS-CLIP |
| RAB11FIP2 | ENSG00000107560 | PAR-CLIP |
| REPIN1 | ENSG00000214022 | Multiple |
| NUDT16L1 | ENSG00000168101 | Multiple |
| YTHDF2 | ENSG00000198492 | Multiple |
| MFSD9 | ENSG00000135953 | Multiple |
| PSMG3 | ENSG00000157778 | HITS-CLIP |
| RBM39 | ENSG00000131051 | HITS-CLIP |
| KLHDC10 | ENSG00000128607 | HITS-CLIP |
| LFNG | ENSG00000106003 | Multiple |
| PLEKHG3 | ENSG00000126822 | HITS-CLIP |
| KCTD21 | ENSG00000188997 | PAR-CLIP |
| S1PR3 | ENSG00000213694 | HITS-CLIP |
| CACHD1 | ENSG00000158966 | HITS-CLIP |
| GNB2 | ENSG00000172354 | HITS-CLIP |
| EEF2 | ENSG00000167658 | HITS-CLIP |
| CCDC142 | ENSG00000135637 | PAR-CLIP |
| GANAB | ENSG00000089597 | HITS-CLIP |
| RBM20 | ENSG00000203867 | PAR-CLIP |
| ZNF395 | ENSG00000186918 | HITS-CLIP |
| B4GALT1 | ENSG00000086062 | Multiple |
| STX16 | ENSG00000124222 | HITS-CLIP |
| HOMEZ | ENSG00000215271 | PAR-CLIP |
| RRP1 | ENSG00000160214 | HITS-CLIP |
| JUN | ENSG00000177606 | Multiple |

| | | |
|-------------|-----------------|-----------|
| RPS12 | ENSG00000112306 | CLASH |
| CRTAP | ENSG00000170275 | HITS-CLIP |
| FBXO28 | ENSG00000143756 | HITS-CLIP |
| DCP2 | ENSG00000172795 | HITS-CLIP |
| FBN2 | ENSG00000138829 | HITS-CLIP |
| LRCH2 | ENSG00000130224 | HITS-CLIP |
| TXLNA | ENSG00000084652 | Multiple |
| GOLGA8A | ENSG00000175265 | HITS-CLIP |
| CTB-102L5.4 | ENSG00000267748 | HITS-CLIP |
| NCAPD2 | ENSG00000010292 | PAR-CLIP |
| URM1 | ENSG00000167118 | HITS-CLIP |
| PPARA | ENSG00000186951 | HITS-CLIP |
| IVL | ENSG00000163207 | Multiple |
| FMNL3 | ENSG00000161791 | CLASH |
| CTNNB1 | ENSG00000168036 | PAR-CLIP |
| ZNF805 | ENSG00000204524 | HITS-CLIP |
| UNK | ENSG00000132478 | HITS-CLIP |
| CDCA3 | ENSG00000111665 | Multiple |
| ACTR3 | ENSG00000115091 | HITS-CLIP |
| CTNNA1 | ENSG00000044115 | HITS-CLIP |
| RRP8 | ENSG00000132275 | PAR-CLIP |
| AXIN2 | ENSG00000168646 | HITS-CLIP |
| TRIM65 | ENSG00000141569 | HITS-CLIP |
| GFPT1 | ENSG00000198380 | HITS-CLIP |
| PABPC3 | ENSG00000151846 | HITS-CLIP |
| EPOR | ENSG00000187266 | Multiple |
| SEC24C | ENSG00000176986 | HITS-CLIP |
| SBNO1 | ENSG00000139697 | HITS-CLIP |
| BHLHE40 | ENSG00000134107 | PAR-CLIP |
| NPEPPS | ENSG00000141279 | PAR-CLIP |
| COL18A1 | ENSG00000182871 | HITS-CLIP |
| POGK | ENSG00000143157 | HITS-CLIP |
| RAPGEF2 | ENSG00000109756 | PAR-CLIP |
| PRR14 | ENSG00000156858 | HITS-CLIP |
| SEC23B | ENSG00000101310 | Multiple |
| NFATC2IP | ENSG00000176953 | HITS-CLIP |
| RNPS1 | ENSG00000205937 | HITS-CLIP |
| IGFBP4 | ENSG00000141753 | HITS-CLIP |
| DYNC1LI2 | ENSG00000135720 | PAR-CLIP |
| IFRD2 | ENSG00000214706 | PAR-CLIP |
| E2F3 | ENSG00000112242 | Multiple |
| SMARCA5 | ENSG00000153147 | HITS-CLIP |
| TSPAN15 | ENSG00000099282 | HITS-CLIP |
| SACS | ENSG00000151835 | HITS-CLIP |

| | | |
|-----------|-----------------|-----------|
| HIST1H2AG | ENSG00000196787 | PAR-CLIP |
| GTF2IRD1 | ENSG00000006704 | HITS-CLIP |
| PLXNB3 | ENSG00000198753 | PAR-CLIP |
| ZC3H7B | ENSG00000100403 | HITS-CLIP |
| RIT1 | ENSG00000143622 | HITS-CLIP |
| STS | ENSG00000101846 | HITS-CLIP |
| KIDINS220 | ENSG00000134313 | HITS-CLIP |
| DESI2 | ENSG00000121644 | PAR-CLIP |
| DLC1 | ENSG00000164741 | HITS-CLIP |
| ACTR2 | ENSG00000138071 | PAR-CLIP |
| IRS4 | ENSG00000133124 | HITS-CLIP |
| FAM120AOS | ENSG00000188938 | HITS-CLIP |
| QKI | ENSG00000112531 | HITS-CLIP |
| UBE3C | ENSG00000009335 | HITS-CLIP |
| CENPF | ENSG00000117724 | PAR-CLIP |
| SON | ENSG00000159140 | Multiple |
| ASPHD1 | ENSG00000174939 | HITS-CLIP |
| TMEM14C | ENSG00000111843 | HITS-CLIP |
| TXNRD1 | ENSG00000198431 | HITS-CLIP |
| BCKDK | ENSG00000103507 | HITS-CLIP |
| TP53INP1 | ENSG00000164938 | Multiple |
| ELMSAN1 | ENSG00000156030 | PAR-CLIP |
| LIFR | ENSG00000113594 | HITS-CLIP |
| HOXA3 | ENSG00000105997 | Multiple |
| DIAPH1 | ENSG00000131504 | HITS-CLIP |
| ATXN1 | ENSG00000124788 | Multiple |
| EPS15 | ENSG00000085832 | HITS-CLIP |
| DENND5B | ENSG00000170456 | PAR-CLIP |
| AGPS | ENSG00000018510 | HITS-CLIP |
| STK35 | ENSG00000125834 | Multiple |
| ANKRD42 | ENSG00000137494 | HITS-CLIP |
| MYL9 | ENSG00000101335 | HITS-CLIP |
| ZNF460 | ENSG00000197714 | Multiple |
| BIRC6 | ENSG00000115760 | Multiple |
| SPAG9 | ENSG00000008294 | HITS-CLIP |
| KRT10 | ENSG00000186395 | qPCR |
| KRT5 | ENSG00000186081 | qPCR |
| FCHO2 | ENSG00000157107 | HITS-CLIP |
| KIAA1462 | ENSG00000165757 | HITS-CLIP |
| SET | ENSG00000119335 | PAR-CLIP |
| PSMD14 | ENSG00000115233 | PAR-CLIP |
| SLC11A2 | ENSG00000110911 | HITS-CLIP |
| WASF2 | ENSG00000158195 | HITS-CLIP |
| FBXO10 | ENSG00000147912 | HITS-CLIP |

| | | |
|-----------|-----------------|-----------|
| GABARAPL1 | ENSG00000139112 | PAR-CLIP |
| MPDU1 | ENSG00000129255 | HITS-CLIP |
| EIF1B | ENSG00000114784 | HITS-CLIP |
| ZC3H13 | ENSG00000123200 | HITS-CLIP |
| SHISA5 | ENSG00000164054 | HITS-CLIP |
| XYLT2 | ENSG00000015532 | Multiple |
| NOL4L | ENSG00000197183 | HITS-CLIP |
| SIM1 | ENSG00000112246 | PAR-CLIP |
| COPZ1 | ENSG00000111481 | Multiple |
| CDYL2 | ENSG00000166446 | HITS-CLIP |
| FLNA | ENSG00000196924 | HITS-CLIP |
| ELOVL5 | ENSG00000012660 | Multiple |
| HIATL1 | ENSG00000148110 | HITS-CLIP |
| SLC39A9 | ENSG00000029364 | Multiple |
| TIMM13 | ENSG00000099800 | HITS-CLIP |
| MUC1 | ENSG00000185499 | Multiple |
| CDC42BPA | ENSG00000143776 | HITS-CLIP |
| NCOA2 | ENSG00000140396 | HITS-CLIP |
| TMEM177 | ENSG00000144120 | Multiple |
| HIST1H4H | ENSG00000158406 | HITS-CLIP |
| KCMF1 | ENSG00000176407 | PAR-CLIP |
| ZFP62 | ENSG00000196670 | HITS-CLIP |
| GPRIN1 | ENSG00000169258 | HITS-CLIP |
| TEAD1 | ENSG00000187079 | HITS-CLIP |
| SLFN13 | ENSG00000154760 | HITS-CLIP |
| AEN | ENSG00000181026 | PAR-CLIP |
| SMARCC1 | ENSG00000173473 | HITS-CLIP |
| CFLAR | ENSG00000003402 | Multiple |
| FAM118A | ENSG00000100376 | Multiple |
| GGCX | ENSG00000115486 | HITS-CLIP |
| PHC2 | ENSG00000134686 | HITS-CLIP |
| FBXL19 | ENSG00000099364 | HITS-CLIP |
| NRP1 | ENSG00000099250 | HITS-CLIP |
| SEMA4C | ENSG00000168758 | Multiple |
| ZNF280D | ENSG00000137871 | PAR-CLIP |
| CHAC1 | ENSG00000128965 | HITS-CLIP |
| SRRM2 | ENSG00000167978 | HITS-CLIP |
| KLHL15 | ENSG00000174010 | PAR-CLIP |
| SENP1 | ENSG00000079387 | HITS-CLIP |
| EEF1A1 | ENSG00000156508 | PAR-CLIP |
| PLEKHM3 | ENSG00000178385 | PAR-CLIP |
| TMEM259 | ENSG00000182087 | HITS-CLIP |
| DDX5 | ENSG00000108654 | Multiple |
| EIF5B | ENSG00000158417 | HITS-CLIP |

| | | |
|-----------|-----------------|-----------|
| LZTS2 | ENSG00000107816 | HITS-CLIP |
| INSR | ENSG00000171105 | PAR-CLIP |
| FLG | ENSG00000143631 | qPCR |
| ZSWIM4 | ENSG00000132003 | HITS-CLIP |
| STC2 | ENSG00000113739 | Multiple |
| PTP4A1 | ENSG00000112245 | Multiple |
| KMT2D | ENSG00000167548 | Multiple |
| SEPN1 | ENSG00000162430 | HITS-CLIP |
| POP1 | ENSG00000104356 | HITS-CLIP |
| PEA15 | ENSG00000162734 | PAR-CLIP |
| SAE1 | ENSG00000142230 | HITS-CLIP |
| PPP1R9B | ENSG00000108819 | HITS-CLIP |
| BMP2 | ENSG00000125845 | HITS-CLIP |
| YRDC | ENSG00000196449 | Multiple |
| AKAP2 | ENSG00000241978 | CLASH |
| TNFRSF10B | ENSG00000120889 | Multiple |
| KDELR1 | ENSG00000105438 | HITS-CLIP |
| FAM210B | ENSG00000124098 | HITS-CLIP |
| PUS7 | ENSG00000091127 | HITS-CLIP |
| FAM199X | ENSG00000123575 | CLASH |
| TMEM2 | ENSG00000135048 | Multiple |
| LYPLA2 | ENSG00000011009 | Multiple |
| BUB1B | ENSG00000156970 | HITS-CLIP |
| DYNLL2 | ENSG00000264364 | PAR-CLIP |
| BCL2L12 | ENSG00000126453 | Multiple |
| PPP1R12C | ENSG00000125503 | Multiple |
| LCLAT1 | ENSG00000172954 | HITS-CLIP |
| FIGN | ENSG00000182263 | HITS-CLIP |
| STRN | ENSG00000115808 | Multiple |
| SMARCD2 | ENSG00000108604 | HITS-CLIP |
| CDK13 | ENSG00000065883 | HITS-CLIP |
| ZNF398 | ENSG00000197024 | PAR-CLIP |
| SDK2 | ENSG00000069188 | HITS-CLIP |
| DSG2 | ENSG00000046604 | Multiple |
| YY1 | ENSG00000100811 | PAR-CLIP |
| SLC16A6 | ENSG00000108932 | HITS-CLIP |
| SP1 | ENSG00000185591 | Multiple |
| MCRS1 | ENSG00000187778 | HITS-CLIP |
| MFSD5 | ENSG00000182544 | HITS-CLIP |
| SEMA4B | ENSG00000185033 | HITS-CLIP |
| PSMB1 | ENSG00000008018 | Multiple |
| B3GALTL | ENSG00000187676 | HITS-CLIP |
| KRT80 | ENSG00000167767 | HITS-CLIP |
| SMIM13 | ENSG00000224531 | HITS-CLIP |

| | | |
|----------|-----------------|-----------|
| GTPBP2 | ENSG00000172432 | Multiple |
| AKIRIN1 | ENSG00000174574 | Multiple |
| UCHL3 | ENSG00000118939 | Multiple |
| MAX | ENSG00000125952 | HITS-CLIP |
| GCSAM | ENSG00000174500 | PAR-CLIP |
| RASSF3 | ENSG00000153179 | Multiple |
| TNKS1BP1 | ENSG00000149115 | Multiple |
| GFM1 | ENSG00000168827 | HITS-CLIP |
| STX6 | ENSG00000135823 | HITS-CLIP |
| PEX13 | ENSG00000162928 | HITS-CLIP |
| NFE2L1 | ENSG00000082641 | HITS-CLIP |
| TSPAN14 | ENSG00000108219 | Multiple |
| KLC2 | ENSG00000174996 | HITS-CLIP |
| DGKB | ENSG00000136267 | HITS-CLIP |
| RCE1 | ENSG00000173653 | HITS-CLIP |
| SUN1 | ENSG00000164828 | PAR-CLIP |
| BBC3 | ENSG00000105327 | Multiple |
| ZNF35 | ENSG00000169981 | HITS-CLIP |
| MGEA5 | ENSG00000198408 | HITS-CLIP |
| ZBTB7A | ENSG00000178951 | HITS-CLIP |
| THUMPD1 | ENSG00000066654 | PAR-CLIP |
| PARP12 | ENSG00000059378 | PAR-CLIP |
| TWISTNB | ENSG00000105849 | PAR-CLIP |
| CLN6 | ENSG00000128973 | HITS-CLIP |
| C18orf54 | ENSG00000166845 | PAR-CLIP |
| CDK12 | ENSG00000167258 | HITS-CLIP |
| POMK | ENSG00000185900 | HITS-CLIP |
| CNOT1 | ENSG00000125107 | Multiple |
| ZNF281 | ENSG00000162702 | Multiple |
| FNDC4 | ENSG00000115226 | HITS-CLIP |
| WHSC1 | ENSG00000109685 | HITS-CLIP |
| STARD13 | ENSG00000133121 | HITS-CLIP |
| INO80 | ENSG00000128908 | PAR-CLIP |
| COX10 | ENSG00000006695 | HITS-CLIP |
| CREB3L2 | ENSG00000182158 | Multiple |
| SCAF11 | ENSG00000139218 | Multiple |
| PARP1 | ENSG00000143799 | Multiple |
| SEC24B | ENSG00000138802 | Multiple |
| CD4 | ENSG00000010610 | HITS-CLIP |
| RNF167 | ENSG00000108523 | Multiple |
| BRPF1 | ENSG00000156983 | Multiple |
| SUZ12 | ENSG00000178691 | PAR-CLIP |
| ARCN1 | ENSG00000095139 | PAR-CLIP |
| PDGFD | ENSG00000170962 | HITS-CLIP |

| | | |
|-------------|-----------------|-----------|
| RC3H1 | ENSG00000135870 | Multiple |
| BSG | ENSG00000172270 | HITS-CLIP |
| CDC27 | ENSG00000004897 | PAR-CLIP |
| SEC23IP | ENSG00000107651 | Multiple |
| CAPN15 | ENSG00000103326 | HITS-CLIP |
| GPSM2 | ENSG00000121957 | HITS-CLIP |
| SCD | ENSG00000099194 | HITS-CLIP |
| SUV420H2 | ENSG00000133247 | Multiple |
| EDC3 | ENSG00000179151 | HITS-CLIP |
| KIF18B | ENSG00000186185 | PAR-CLIP |
| IL6ST | ENSG00000134352 | HITS-CLIP |
| KDM7A | ENSG00000006459 | HITS-CLIP |
| PLEKHA1 | ENSG00000107679 | HITS-CLIP |
| FAM102A | ENSG00000167106 | HITS-CLIP |
| ZNF704 | ENSG00000164684 | HITS-CLIP |
| KIAA0368 | ENSG00000136813 | HITS-CLIP |
| PHF16 | ENSG00000102221 | PAR-CLIP |
| UBAP2L | ENSG00000143569 | HITS-CLIP |
| ZBTB48 | ENSG00000204859 | HITS-CLIP |
| VWA5A | ENSG00000110002 | HITS-CLIP |
| CHD5 | ENSG00000116254 | HITS-CLIP |
| UBN1 | ENSG00000118900 | HITS-CLIP |
| SEC22C | ENSG00000093183 | PAR-CLIP |
| IGSF3 | ENSG00000143061 | HITS-CLIP |
| VPS37C | ENSG00000167987 | HITS-CLIP |
| DDR1 | ENSG00000204580 | HITS-CLIP |
| DHX9 | ENSG00000135829 | HITS-CLIP |
| TIMM44 | ENSG00000104980 | HITS-CLIP |
| STARD7 | ENSG00000084090 | HITS-CLIP |
| UBN2 | ENSG00000157741 | PAR-CLIP |
| GATAD2B | ENSG00000143614 | Multiple |
| ABHD3 | ENSG00000158201 | HITS-CLIP |
| EPS15L1 | ENSG00000127527 | HITS-CLIP |
| COBL | ENSG00000106078 | HITS-CLIP |
| LRIF1 | ENSG00000121931 | HITS-CLIP |
| COG3 | ENSG00000136152 | HITS-CLIP |
| PPAN-P2RY11 | ENSG00000243207 | HITS-CLIP |
| RBM12B | ENSG00000183808 | HITS-CLIP |
| SUPV3L1 | ENSG00000156502 | HITS-CLIP |
| ZBTB14 | ENSG00000198081 | HITS-CLIP |
| SLC25A19 | ENSG00000125454 | HITS-CLIP |
| TNFRSF12A | ENSG00000006327 | HITS-CLIP |
| ARF6 | ENSG00000165527 | HITS-CLIP |
| TMEM201 | ENSG00000188807 | HITS-CLIP |

| | | |
|----------|-----------------|-----------|
| PDXDC1 | ENSG00000179889 | HITS-CLIP |
| EIF6 | ENSG00000242372 | HITS-CLIP |
| CSPG4 | ENSG00000173546 | PAR-CLIP |
| PLD3 | ENSG00000105223 | PAR-CLIP |
| CCDC80 | ENSG00000091986 | Multiple |
| CHAMP1 | ENSG00000198824 | HITS-CLIP |
| MON1B | ENSG00000103111 | HITS-CLIP |
| CARM1 | ENSG00000142453 | Multiple |
| EIF4EBP2 | ENSG00000148730 | Multiple |
| PDZD11 | ENSG00000120509 | Multiple |
| LDLR | ENSG00000130164 | PAR-CLIP |
| EPO | ENSG00000130427 | Multiple |
| EIF1AD | ENSG00000175376 | HITS-CLIP |
| POLG | ENSG00000140521 | PAR-CLIP |
| PER2 | ENSG00000132326 | Multiple |
| NUP155 | ENSG00000113569 | HITS-CLIP |
| ZNF483 | ENSG00000173258 | HITS-CLIP |
| LRP3 | ENSG00000130881 | HITS-CLIP |
| ADARB1 | ENSG00000197381 | HITS-CLIP |
| TNPO2 | ENSG00000105576 | Multiple |
| EMD | ENSG00000102119 | HITS-CLIP |
| ATP2A2 | ENSG00000174437 | HITS-CLIP |
| AHNAK | ENSG00000124942 | Multiple |
| YTHDF3 | ENSG00000185728 | Multiple |
| SH2B1 | ENSG00000178188 | HITS-CLIP |
| DGKD | ENSG00000077044 | HITS-CLIP |
| SMAD7 | ENSG00000101665 | Multiple |
| UBE2W | ENSG00000104343 | HITS-CLIP |
| NDUFS7 | ENSG00000115286 | PAR-CLIP |
| MKNK2 | ENSG00000099875 | Multiple |
| PPIF | ENSG00000108179 | Multiple |
| ADD1 | ENSG00000087274 | PAR-CLIP |
| OSBPL8 | ENSG00000091039 | HITS-CLIP |
| PLEKHA6 | ENSG00000143850 | HITS-CLIP |
| AURKB | ENSG00000178999 | CLASH |
| ZNF106 | ENSG00000103994 | HITS-CLIP |
| FAM134A | ENSG00000144567 | Multiple |
| GPR157 | ENSG00000180758 | HITS-CLIP |
| KHNYN | ENSG00000100441 | Multiple |
| MOAP1 | ENSG00000165943 | HITS-CLIP |
| FAM65A | ENSG00000039523 | HITS-CLIP |
| LEPROT | ENSG00000213625 | HITS-CLIP |
| PTAR1 | ENSG00000188647 | PAR-CLIP |
| LAMP1 | ENSG00000185896 | HITS-CLIP |

| | | |
|-----------|-----------------|-----------|
| FGFR2 | ENSG00000066468 | Multiple |
| MOB1A | ENSG00000114978 | Multiple |
| PRDM4 | ENSG00000110851 | PAR-CLIP |
| VCPIP1 | ENSG00000175073 | HITS-CLIP |
| GFOD2 | ENSG00000141098 | PAR-CLIP |
| ACIN1 | ENSG00000100813 | HITS-CLIP |
| TTC9C | ENSG00000162222 | HITS-CLIP |
| SNX5 | ENSG00000089006 | Multiple |
| EHD1 | ENSG00000110047 | Multiple |
| C10orf76 | ENSG00000120029 | HITS-CLIP |
| LSM14B | ENSG00000149657 | PAR-CLIP |
| NME1 | ENSG00000239672 | HITS-CLIP |
| XPO1 | ENSG00000082898 | Multiple |
| EPHA4 | ENSG00000116106 | PAR-CLIP |
| UNC13B | ENSG00000198722 | HITS-CLIP |
| PHIP | ENSG00000146247 | HITS-CLIP |
| SCNN1A | ENSG00000111319 | HITS-CLIP |
| VEGFA | ENSG00000112715 | Multiple |
| PCF11 | ENSG00000165494 | PAR-CLIP |
| NFATC3 | ENSG00000072736 | HITS-CLIP |
| FGFR1 | ENSG00000077782 | HITS-CLIP |
| HNRNPUL1 | ENSG00000105323 | PAR-CLIP |
| ATL3 | ENSG00000184743 | HITS-CLIP |
| FAM160A2 | ENSG00000051009 | HITS-CLIP |
| AP1B1 | ENSG00000100280 | HITS-CLIP |
| IRAK1 | ENSG00000184216 | Multiple |
| DAAM1 | ENSG00000100592 | HITS-CLIP |
| RNF213 | ENSG00000173821 | HITS-CLIP |
| CTPS1 | ENSG00000171793 | HITS-CLIP |
| MUM1 | ENSG00000160953 | PAR-CLIP |
| EXOC7 | ENSG00000182473 | HITS-CLIP |
| DYNC2H1 | ENSG00000187240 | HITS-CLIP |
| TRIB1 | ENSG00000173334 | PAR-CLIP |
| NSFL1C | ENSG00000088833 | HITS-CLIP |
| NIPBL | ENSG00000164190 | HITS-CLIP |
| DNTTIP2 | ENSG00000067334 | Multiple |
| HIST1H2AC | ENSG00000180573 | Multiple |
| SRF | ENSG00000112658 | HITS-CLIP |
| C22orf29 | ENSG00000215012 | Multiple |
| PPP2R1B | ENSG00000137713 | HITS-CLIP |
| ABL2 | ENSG00000143322 | Multiple |
| ZHX1 | ENSG00000165156 | PAR-CLIP |
| TET2 | ENSG00000168769 | HITS-CLIP |
| SERPINE1 | ENSG00000106366 | Multiple |

| | | |
|----------|-----------------|-----------|
| SCARB2 | ENSG00000138760 | PAR-CLIP |
| CDK16 | ENSG00000102225 | Multiple |
| PUS1 | ENSG00000177192 | PAR-CLIP |
| HELLS | ENSG00000119969 | HITS-CLIP |
| GCNT1 | ENSG00000187210 | Multiple |
| ZNF654 | ENSG00000175105 | HITS-CLIP |
| SNX17 | ENSG00000115234 | HITS-CLIP |
| PCDH9 | ENSG00000184226 | PAR-CLIP |
| IBA57 | ENSG00000181873 | PAR-CLIP |
| ATP5G2 | ENSG00000135390 | Multiple |
| PARD6B | ENSG00000124171 | Multiple |
| PDHB | ENSG00000168291 | PAR-CLIP |
| SLC25A33 | ENSG00000171612 | PAR-CLIP |
| GPR107 | ENSG00000148358 | Multiple |
| MAPKAPK2 | ENSG00000162889 | HITS-CLIP |
| SIM2 | ENSG00000159263 | PAR-CLIP |
| BRWD1 | ENSG00000185658 | Multiple |
| LETM1 | ENSG00000168924 | HITS-CLIP |
| SOX12 | ENSG00000177732 | HITS-CLIP |
| LYPLA1 | ENSG00000120992 | HITS-CLIP |
| SLC1A5 | ENSG00000105281 | Multiple |
| FBXO48 | ENSG00000204923 | PAR-CLIP |
| TECR | ENSG00000099797 | PAR-CLIP |
| RAB14 | ENSG00000119396 | HITS-CLIP |
| ORC5 | ENSG00000164815 | HITS-CLIP |
| TMEM126A | ENSG00000171202 | PAR-CLIP |
| TMEM200A | ENSG00000164484 | HITS-CLIP |
| MED22 | ENSG00000148297 | Multiple |
| PRRC2A | ENSG00000204469 | HITS-CLIP |
| MBOAT2 | ENSG00000143797 | HITS-CLIP |
| XKR8 | ENSG00000158156 | PAR-CLIP |
| NUP37 | ENSG00000075188 | PAR-CLIP |
| ELOVL4 | ENSG00000118402 | PAR-CLIP |
| DYNLRB1 | ENSG00000125971 | HITS-CLIP |
| ARMCX2 | ENSG00000184867 | HITS-CLIP |
| CMPK1 | ENSG00000162368 | PAR-CLIP |
| MTDH | ENSG00000147649 | HITS-CLIP |
| TNRC6C | ENSG00000078687 | HITS-CLIP |
| SYVN1 | ENSG00000162298 | HITS-CLIP |
| MYLK | ENSG00000065534 | HITS-CLIP |
| INTS5 | ENSG00000185085 | HITS-CLIP |
| SUV39H1 | ENSG00000101945 | HITS-CLIP |
| ULBP1 | ENSG00000111981 | HITS-CLIP |
| RTN3 | ENSG00000133318 | HITS-CLIP |

| | | |
|----------------|-----------------|-----------|
| TMBIM6 | ENSG00000139644 | Multiple |
| NNT | ENSG00000112992 | Multiple |
| EIF4G2 | ENSG00000110321 | HITS-CLIP |
| CLOCK | ENSG00000134852 | HITS-CLIP |
| ZNF703 | ENSG00000183779 | PAR-CLIP |
| KBTBD7 | ENSG00000120696 | PAR-CLIP |
| ZMYND8 | ENSG00000101040 | HITS-CLIP |
| LSM4 | ENSG00000130520 | Multiple |
| KIF5B | ENSG00000170759 | HITS-CLIP |
| C8orf88 | ENSG00000253250 | PAR-CLIP |
| MYO1B | ENSG00000128641 | HITS-CLIP |
| PRRX1 | ENSG00000116132 | HITS-CLIP |
| SIN3A | ENSG00000169375 | PAR-CLIP |
| USP34 | ENSG00000115464 | Multiple |
| EFHD1 | ENSG00000115468 | HITS-CLIP |
| NPTX1 | ENSG00000171246 | HITS-CLIP |
| ATR | ENSG00000175054 | HITS-CLIP |
| MAP1B | ENSG00000131711 | HITS-CLIP |
| DHX33 | ENSG00000005100 | Multiple |
| NUDT19 | ENSG00000213965 | HITS-CLIP |
| CDC25A | ENSG00000164045 | HITS-CLIP |
| ANAPC16 | ENSG00000166295 | PAR-CLIP |
| TBR1 | ENSG00000136535 | PAR-CLIP |
| RPL8 | ENSG00000161016 | HITS-CLIP |
| ELF1 | ENSG00000120690 | Multiple |
| KMT2B | ENSG00000272333 | HITS-CLIP |
| HIST1H4E | ENSG00000276966 | Multiple |
| PIGW | ENSG00000277161 | PAR-CLIP |
| HIST1H4B | ENSG00000278705 | Multiple |
| ZNF776 | ENSG00000152443 | PAR-CLIP |
| PIP4K2B | ENSG00000276293 | Multiple |
| NR4A1 | ENSG00000123358 | HITS-CLIP |
| PALM2-AKAP2 | ENSG00000157654 | Multiple |
| RASL10B | ENSG00000270885 | HITS-CLIP |
| PSG7 | ENSG00000221878 | HITS-CLIP |
| TMEM189-UBE2V1 | ENSG00000124208 | HITS-CLIP |
| HIST1H4D | ENSG00000277157 | Multiple |
| HIST1H2AD | ENSG00000196866 | Multiple |
| MUC16 | ENSG00000181143 | HITS-CLIP |
| BRD4 | ENSG00000141867 | PAR-CLIP |
| RASSF5 | ENSG00000266094 | HITS-CLIP |

Table S5. Upregulated DEMs shared between benign PNs, AIS/MIA, and invasive adenocarcinomas.

| Categories | Total | Elements |
|--|-------|--|
| Benign vs AIS/MIA Benign vs Invasive AIS/MIA vs Invasive | 2 | Let-7b-3p, miR-125b-5p |
| Benign vs AIS/MIA Benign vs Invasive | 6 | miR-10b-5p, miR-92b-3p, miR-10a-5p, miR-328-3p, miR-1228-5p, miR-99a-5p |
| AIS/MIA vs Invasive Benign vs Invasive | 1 | miR-100-5p |
| Benign vs Invasive | 11 | miR-125a-5p, miR139-5p, miR-27b-3p, miR-193a-5p, miR-99b-5p, miR-122-5p, let7d-3p, miR-483-5p, miR-150-5p, miR-3168, miR-24-3p |
| Benign vs AIS/MIA | 3 | miR-30d-5p, miR-625-3p, miR-423-3p |
| AIS/MIA vs Invasive | 3 | miR-126-5p, miR-30c-5p, miR-152-3p |

Table S6. Down-regulated DEMs shared between benign PNs, AIS/MIA, and invasive adenocarcinomas.

| Categories | Total | Elements |
|---|--------------|--|
| Benign vs AIS/MIA Benign vs Invasive | 7 | miR-30e-5p, miR-502-3p, miR-503-5p, miR-101-3p, miR-144-3p, let-7g-5p, miR-500a-3p |
| Benign vs Invasive AIS/MIA vs Invasive | 3 | miR-7-5p, miR-532-5p, miR-361-3p |
| Benign vs Invasive | 7 | miR-16-5p, miR-186-5p, miR-399-3p, let-7i-5p, miR-19a-3p, miR-148b-3p, miR-363-3p |
| Benign vs AIS/MIA | 4 | miR-21-5p, miR-103a-3p, miR-144-5p, miR-107 |
| AIS/MIA vs Invasive | 6 | miR-486-3p, miR-25-3p, miR-106-3p, miR-223-5p, miR-128-3p, let-7b-5p |

Table S7. Quality control of small RNA sequencing.

| SampleID | Cohort | Total number of reads | Number of mapped reads | Mapping rate (%) | miRNA Mapping rate (%) | antisense Mapping rate (%) | intergenic Mapping rate (%) | intron Mapping rate (%) | lincRNA Mapping rate (%) | protein_coding Mapping | rRNA Mapping rate (%) |
|--------------|----------|-----------------------|------------------------|------------------|------------------------|----------------------------|-----------------------------|-------------------------|--------------------------|------------------------|-----------------------|
| Training_P01 | Training | 6420144 | 6210073 | 96.727939 | 65.012314 | 2.0837785 | 1.5915433 | 17.678359 | 0.1438228 | 2.4432966 | 0.0858739 |
| Training_P02 | Training | 7030808 | 6755119 | 96.078843 | 64.192956 | 2.8275347 | 1.7637883 | 20.020713 | 0.1046466 | 2.9181993 | 0.1219075 |
| Training_P03 | Training | 6388398 | 6110294 | 95.646733 | 60.463925 | 2.3611753 | 2.028724 | 22.534611 | 0.1511766 | 2.9894934 | 0.134969 |
| Training_P04 | Training | 7968751 | 7717493 | 96.846959 | 49.200815 | 2.8234039 | 1.6111191 | 17.831581 | 0.0859476 | 2.5577315 | 0.1020236 |
| Training_P05 | Training | 5738301 | 5491814 | 95.70453 | 62.679762 | 2.9450105 | 2.2837081 | 24.395582 | 0.1207676 | 3.411605 | 0.1059031 |
| Training_P06 | Training | 8368425 | 8058830 | 96.300439 | 63.96921 | 2.9020238 | 1.725449 | 19.163055 | 0.0943458 | 2.6005895 | 0.1821625 |
| Training_P07 | Training | 8580149 | 7999226 | 93.229453 | 47.175842 | 4.0311733 | 5.302138 | 38.126264 | 0.1297751 | 3.104765 | 0.09448 |
| Training_P08 | Training | 7305660 | 6740400 | 92.262711 | 42.766912 | 4.0512198 | 5.5316153 | 39.486855 | 0.1253041 | 4.3110201 | 0.1194909 |
| Training_P09 | Training | 8717943 | 8215254 | 94.233858 | 52.820398 | 3.4828179 | 4.3877889 | 32.214817 | 0.1141292 | 3.3010533 | 0.154132 |
| Training_P10 | Training | 6641324 | 6453619 | 97.173681 | 74.478294 | 1.8669886 | 1.4142298 | 16.040271 | 0.1004682 | 2.3355397 | 0.0930021 |
| Training_P11 | Training | 8622964 | 8033675 | 93.166051 | 40.549977 | 4.5837241 | 6.2496803 | 43.603482 | 0.1424182 | 3.0840078 | 0.0987946 |
| Training_P12 | Training | 8062412 | 7618913 | 94.499177 | 44.503628 | 4.0110884 | 6.0069199 | 40.136723 | 0.1571834 | 3.1294075 | 0.1155283 |
| Training_P13 | Training | 8173494 | 7975203 | 97.573975 | 73.057745 | 1.4425443 | 1.270789 | 14.931607 | 0.1054707 | 2.4946899 | 0.057497 |
| Training_P14 | Training | 8334820 | 7989530 | 95.857259 | 59.341459 | 2.7660263 | 1.7094497 | 20.521395 | 0.085625 | 2.5983468 | 0.0786905 |
| Training_P15 | Training | 8692719 | 8265328 | 95.083345 | 55.904669 | 3.1158534 | 4.3687679 | 30.933836 | 0.1132784 | 2.8040871 | 0.0951505 |
| Training_P16 | Training | 10023971 | 9679886 | 96.567378 | 68.50353 | 2.6603688 | 2.8110455 | 20.500551 | 0.0877438 | 2.3409108 | 0.09106 |
| Training_P17 | Training | 7985174 | 7792781 | 97.590622 | 74.767877 | 1.6009946 | 1.175357 | 14.527766 | 0.0843259 | 2.2744736 | 0.0579703 |
| Training_P18 | Training | 8536967 | 8289869 | 97.105553 | 73.898287 | 2.1279267 | 1.2076427 | 15.303933 | 0.0940445 | 2.9343578 | 0.0807291 |
| Training_P19 | Training | 6811535 | 6518277 | 95.694686 | 65.511473 | 2.3000685 | 1.7849809 | 21.464046 | 0.1007373 | 2.8107581 | 0.1949672 |
| Training_P20 | Training | 6670790 | 6377753 | 95.607162 | 61.295091 | 2.0375018 | 1.7424319 | 20.695126 | 0.1187592 | 2.7734624 | 0.1127017 |
| Training_P21 | Training | 9012390 | 8719139 | 96.746135 | 63.813778 | 3.5495707 | 1.4078684 | 17.158747 | 0.0775535 | 2.3228928 | 0.1241006 |
| Training_P22 | Training | 9485040 | 9199585 | 96.990471 | 58.675352 | 2.2000703 | 1.5396129 | 17.888796 | 0.0927524 | 2.9080026 | 0.1200453 |
| Training_P23 | Training | 9540743 | 9341317 | 97.909744 | 77.652402 | 1.7113683 | 0.9382938 | 11.971503 | 0.0789949 | 2.6043232 | 0.1020056 |
| Training_P24 | Training | 9717269 | 9131628 | 93.973194 | 37.911957 | 4.1267559 | 6.2277614 | 42.164782 | 0.1472227 | 3.5547906 | 0.0654593 |
| Training_P25 | Training | 9724480 | 9333147 | 95.975795 | 65.353234 | 2.5316532 | 1.8556656 | 21.239856 | 0.1000984 | 3.4969912 | 0.1689516 |
| Training_P26 | Training | 9461001 | 8953965 | 94.640779 | 27.482542 | 6.1691887 | 7.9899352 | 51.695847 | 0.1556582 | 3.1445641 | 0.0607608 |
| Training_P27 | Training | 8830031 | 7904391 | 89.517138 | 31.906011 | 5.0903711 | 6.8018902 | 51.063162 | 0.1747215 | 3.2658114 | 0.1262315 |
| Training_P28 | Training | 9517554 | 9308675 | 97.805329 | 76.198908 | 4.4416937 | 1.086782 | 12.827261 | 0.0954916 | 2.218163 | 0.0697092 |
| Training_P29 | Training | 8986452 | 8392802 | 93.393945 | 42.984822 | 3.7649663 | 5.1011331 | 37.801214 | 0.1230757 | 3.3226408 | 0.0584946 |

| | | | | | | | | | | | |
|--------------|----------|----------|----------|-----------|-----------|-----------|-----------|-----------|-----------|-----------|-----------|
| Training_P30 | Training | 15039641 | 13969091 | 92.881812 | 47.555525 | 3.6496636 | 4.4129428 | 36.302062 | 0.1423995 | 2.9772994 | 0.0921618 |
| Training_P31 | Training | 8565209 | 7962167 | 92.959401 | 36.528525 | 3.9531031 | 3.333816 | 36.144695 | 0.1357911 | 3.1794747 | 0.1259665 |
| Training_P32 | Training | 8443278 | 8001885 | 94.772256 | 59.292112 | 2.7054188 | 2.3527831 | 26.86427 | 0.1115487 | 2.713896 | 0.1187345 |
| Training_P33 | Training | 8898123 | 8507612 | 95.61131 | 51.537631 | 4.2881579 | 4.1629661 | 29.4869 | 0.1103639 | 3.070561 | 0.1220025 |
| Training_P34 | Training | 8259814 | 7697632 | 93.193769 | 52.148628 | 3.6096653 | 4.275094 | 34.633495 | 0.1447924 | 2.8920019 | 0.2507243 |
| Training_P35 | Training | 8215197 | 7599264 | 92.502517 | 40.942682 | 4.5617883 | 5.7807572 | 42.739652 | 0.1460141 | 3.0906173 | 0.1020691 |
| Training_P36 | Training | 10546827 | 9826142 | 93.166807 | 34.373664 | 4.663056 | 6.4966902 | 48.357219 | 0.1575525 | 3.3911936 | 0.0857559 |
| Training_P37 | Training | 7607870 | 7193838 | 94.557846 | 59.010502 | 3.0037281 | 2.4853354 | 27.08632 | 0.1721311 | 2.757105 | 0.1267775 |
| Training_P38 | Training | 6877268 | 6504394 | 94.578167 | 50.540686 | 3.4980481 | 2.9721908 | 31.185473 | 0.1452044 | 3.5443591 | 0.1284337 |
| Training_P39 | Training | 7978539 | 7744101 | 97.061643 | 60.1709 | 2.3663818 | 1.8844666 | 20.781044 | 0.0935658 | 2.7621067 | 0.1157698 |
| Training_P40 | Training | 8626596 | 7630493 | 88.453116 | 30.892751 | 5.1174806 | 5.4304224 | 52.045916 | 0.1611298 | 3.6091934 | 0.105334 |
| Training_P41 | Training | 8807754 | 8191165 | 92.999475 | 35.399531 | 4.510264 | 6.0783295 | 44.664233 | 0.1498322 | 3.1569166 | 0.0593872 |
| Training_P42 | Training | 8187251 | 7883123 | 96.285347 | 51.340867 | 2.8072631 | 2.1762949 | 23.527008 | 0.1157642 | 2.8456446 | 0.0827189 |
| Training_P43 | Training | 11657123 | 10958427 | 94.006274 | 52.123158 | 3.3685233 | 4.0903863 | 31.752851 | 0.185857 | 2.9839106 | 0.0735872 |
| Training_P44 | Training | 10441650 | 9397702 | 90.002078 | 25.643669 | 5.6913736 | 7.8663592 | 55.690508 | 0.1729829 | 3.1926333 | 0.0797784 |
| Training_P45 | Training | 12609717 | 11940591 | 94.693569 | 45.116026 | 4.1579502 | 5.4252842 | 37.647123 | 0.1300166 | 3.7992082 | 0.0635521 |
| Training_P46 | Training | 10296580 | 9636985 | 93.594038 | 45.179365 | 4.3349243 | 5.5300283 | 39.034127 | 0.1283847 | 2.8295978 | 0.0725884 |
| Training_P47 | Training | 9776103 | 8678220 | 88.769728 | 26.290765 | 5.7816484 | 7.8388886 | 55.315503 | 0.1687356 | 3.0946141 | 0.0700278 |
| Testing_P48 | Testing | 8798653 | 8391964 | 95.377827 | 40.812294 | 3.8227762 | 5.5469494 | 36.934989 | 0.1439969 | 3.1561583 | 0.1634302 |
| Testing_P49 | Testing | 6090018 | 5830626 | 95.740702 | 37.654522 | 4.8061277 | 6.421506 | 41.863515 | 0.1419116 | 3.1096861 | 0.1031822 |
| Testing_P50 | Testing | 7113184 | 6801123 | 95.612921 | 47.304861 | 3.4059057 | 5.0827194 | 34.677347 | 0.1342229 | 3.4248229 | 0.1200782 |
| Testing_P51 | Testing | 6995655 | 6690716 | 95.641023 | 50.504046 | 3.143616 | 4.0662165 | 30.821709 | 0.1312254 | 3.5601147 | 0.1911878 |
| Testing_P52 | Testing | 7671052 | 7415133 | 96.663834 | 49.314861 | 2.8719939 | 3.8601331 | 26.765629 | 0.1089214 | 3.7328584 | 0.1277702 |
| Testing_P53 | Testing | 7912879 | 7636533 | 96.507643 | 53.631546 | 3.1050216 | 4.5060239 | 30.286375 | 0.1129505 | 2.8883362 | 0.0886659 |
| Testing_P54 | Testing | 8147273 | 7820632 | 95.990794 | 63.12943 | 4.1369888 | 3.464362 | 24.948009 | 0.0897413 | 1.9136806 | 0.0321756 |
| Testing_P55 | Testing | 8146181 | 7826305 | 96.073301 | 47.07567 | 4.0794368 | 4.5632773 | 30.611125 | 0.1060058 | 2.6849761 | 0.0559332 |
| Testing_P56 | Testing | 7397034 | 6884627 | 93.072805 | 40.907176 | 4.1949719 | 5.3171653 | 39.870875 | 0.1354213 | 3.5128192 | 0.1155328 |
| Testing_P57 | Testing | 8153490 | 7708717 | 94.544999 | 46.678645 | 3.4360884 | 4.9050705 | 35.637474 | 0.1227813 | 3.4338036 | 0.1906024 |
| Testing_P58 | Testing | 6839206 | 6441841 | 94.189896 | 30.662469 | 4.7936685 | 6.3028255 | 49.465021 | 0.1535017 | 3.7193224 | 0.0967011 |
| Testing_P59 | Testing | 7664048 | 7334378 | 95.698487 | 53.514191 | 2.7514694 | 3.5390322 | 27.202661 | 0.110799 | 3.6921763 | 0.1820604 |
| Testing_P60 | Testing | 8697882 | 8457393 | 97.235086 | 48.195872 | 2.1000916 | 2.7980726 | 20.974537 | 0.0773367 | 2.6077914 | 0.1098309 |
| Testing_P61 | Testing | 9882099 | 9420815 | 95.332125 | 58.600051 | 2.5842969 | 3.8797599 | 28.063007 | 0.1040807 | 3.0382262 | 0.2735468 |

| | | | | | | | | | | | |
|-------------|---------|----------|----------|-----------|-----------|-----------|-----------|-----------|-----------|-----------|-----------|
| Testing_P62 | Testing | 6453830 | 6189655 | 95.906694 | 50.763007 | 3.4554861 | 4.6935572 | 32.914839 | 0.1163258 | 3.1482395 | 0.4345207 |
| Testing_P63 | Testing | 6071162 | 5692474 | 93.762512 | 40.623711 | 4.4076471 | 5.719341 | 42.582856 | 0.1361447 | 3.1870223 | 0.1327572 |
| Testing_P64 | Testing | 7207365 | 6548304 | 90.855729 | 53.263813 | 3.1282986 | 3.0923885 | 30.378889 | 0.117379 | 3.5576197 | 0.1357476 |
| Testing_P65 | Testing | 7728240 | 7149117 | 92.506405 | 66.18604 | 2.8675056 | 2.106442 | 22.182516 | 0.0953777 | 3.2691543 | 0.1650623 |
| Testing_P66 | Testing | 10335349 | 9718440 | 94.031077 | 64.836858 | 2.1786281 | 2.3034664 | 22.361449 | 0.0871428 | 4.016484 | 0.1640301 |
| Testing_P67 | Testing | 8842456 | 8025820 | 90.764602 | 48.307326 | 2.9329277 | 2.8245338 | 30.826719 | 0.1108599 | 3.5843793 | 0.1286598 |
| Testing_P68 | Testing | 9267396 | 8456051 | 91.245168 | 52.813731 | 2.8428696 | 2.6458568 | 28.450171 | 0.1319292 | 3.9670202 | 0.1861231 |
| Testing_P69 | Testing | 5093530 | 4722612 | 92.71786 | 49.814502 | 2.5966986 | 2.3777096 | 24.924809 | 0.1088628 | 3.457557 | 0.0725058 |
| Testing_P70 | Testing | 6837055 | 6181701 | 90.414674 | 58.689794 | 2.8401244 | 2.2817344 | 26.171842 | 0.1144682 | 3.2398459 | 0.4111759 |
| Testing_P71 | Testing | 6088264 | 5608943 | 92.127132 | 51.372831 | 3.0550438 | 2.7017746 | 28.166287 | 0.1365052 | 3.8230183 | 0.186999 |
| Testing_P72 | Testing | 7522844 | 6862122 | 91.217125 | 54.212358 | 2.9711485 | 2.7927659 | 29.600887 | 0.1249893 | 3.5260701 | 0.0781342 |
| Testing_P73 | Testing | 6108211 | 5645778 | 92.429322 | 54.833278 | 2.3707184 | 2.252887 | 24.612551 | 0.1509801 | 3.8075606 | 0.1270802 |
| Testing_P74 | Testing | 5579557 | 5153862 | 92.370452 | 55.26582 | 3.0230372 | 3.2176259 | 30.479939 | 0.1293706 | 3.6387147 | 0.149713 |
| Testing_P75 | Testing | 5725124 | 5384489 | 94.050173 | 52.880636 | 2.543618 | 2.6856959 | 25.167198 | 0.1538215 | 3.5095299 | 0.1554744 |
| Testing_P76 | Testing | 5464800 | 4902942 | 89.718599 | 50.100464 | 3.4788568 | 3.0789677 | 31.778308 | 0.1131504 | 3.7703356 | 0.1304761 |
| Testing_P77 | Testing | 5953024 | 5290497 | 88.870749 | 59.337926 | 2.8680607 | 2.2738317 | 27.316432 | 0.1316385 | 3.3165992 | 0.2445233 |
| Testing_P78 | Testing | 7977749 | 7557868 | 94.736849 | 67.293915 | 2.2059859 | 1.8947671 | 20.276419 | 0.078662 | 3.2441865 | 0.140604 |
| Testing_P79 | Testing | 8188578 | 7821221 | 95.513788 | 72.776438 | 1.5802285 | 1.3423607 | 15.144132 | 0.0867362 | 3.425843 | 0.1197916 |
| Testing_P80 | Testing | 5713940 | 5186723 | 90.773144 | 50.773934 | 3.6543241 | 3.2791418 | 31.989505 | 0.1190524 | 3.1317221 | 0.2225908 |
| Testing_P81 | Testing | 5168901 | 4387355 | 84.879842 | 45.75506 | 3.7811772 | 3.2921202 | 36.948572 | 0.1460086 | 3.8450046 | 0.2219257 |
| Testing_P82 | Testing | 5561755 | 5280336 | 94.940104 | 40.575467 | 6.1206837 | 5.4475511 | 39.878618 | 0.130118 | 2.685492 | 0.2003471 |
| Testing_P83 | Testing | 7540631 | 7096751 | 94.11349 | 54.593979 | 2.8465679 | 2.7261912 | 26.129816 | 0.1038362 | 4.9407433 | 0.1542419 |
| Testing_P84 | Testing | 5721595 | 5216472 | 91.17164 | 50.115698 | 3.5680277 | 3.4611324 | 32.239644 | 0.1126208 | 3.682933 | 0.2723552 |
| Testing_P85 | Testing | 6087467 | 5492993 | 90.23446 | 44.745667 | 3.4382895 | 3.5460631 | 34.513734 | 0.1331059 | 3.6286031 | 0.1739337 |
| Testing_P86 | Testing | 7315514 | 7028738 | 96.079893 | 65.986238 | 1.4481476 | 1.3810018 | 14.288753 | 0.1112243 | 3.7268023 | 0.1221675 |
| Testing_P87 | Testing | 11246754 | 10094139 | 89.751576 | 62.356387 | 2.3287771 | 1.9493887 | 23.471036 | 0.0964421 | 4.414646 | 0.2749137 |
| Testing_P88 | Testing | 10416017 | 9961098 | 95.632505 | 50.394497 | 3.3892549 | 4.0312022 | 32.323706 | 0.1188231 | 4.2458112 | 0.1168178 |
| Testing_P89 | Testing | 8236835 | 7948590 | 96.500537 | 55.322771 | 2.7539109 | 3.4672313 | 25.304186 | 0.1013513 | 3.0241894 | 0.1310379 |
| Testing_P90 | Testing | 7917555 | 7745275 | 97.824076 | 49.731828 | 3.1811653 | 4.453399 | 31.017595 | 0.1112054 | 3.2454088 | 0.1107966 |
| Testing_P91 | Testing | 6631221 | 6351325 | 95.779118 | 42.649361 | 3.5324781 | 5.2917147 | 34.718378 | 0.1190959 | 3.6113003 | 0.1171094 |
| Testing_P92 | Testing | 5828762 | 5434153 | 93.229969 | 37.105704 | 4.1778023 | 5.883824 | 41.883455 | 0.1417348 | 3.9539511 | 0.1874472 |
| Testing_P93 | Testing | 6222768 | 5829665 | 93.682827 | 48.08434 | 3.4364868 | 4.5273442 | 34.401188 | 0.1230631 | 3.4495621 | 0.1441421 |

| | | | | | | | | | | | |
|--------------|---------|----------|----------|-----------|-----------|-----------|-----------|-----------|-----------|-----------|-----------|
| Testing_P94 | Testing | 8361269 | 7931636 | 94.861629 | 47.586095 | 3.2820593 | 3.9225829 | 33.91516 | 0.1134591 | 3.3948408 | 0.0963357 |
| Testing_P95 | Testing | 7572777 | 7152678 | 94.452511 | 48.32135 | 3.1266751 | 4.354439 | 32.236513 | 0.1348155 | 3.4128464 | 0.1199551 |
| Testing_P96 | Testing | 5702259 | 5420285 | 95.055048 | 28.988302 | 5.0835396 | 7.3789109 | 49.590769 | 0.1616797 | 3.3223791 | 0.0789411 |
| Testing_P97 | Testing | 6610880 | 6208939 | 93.920008 | 32.121629 | 4.730105 | 6.9114063 | 47.856453 | 0.1668374 | 3.1744299 | 0.1226135 |
| Testing_P98 | Testing | 6601956 | 6202312 | 93.946582 | 29.546358 | 5.522532 | 7.4201846 | 50.495864 | 0.2000517 | 2.923602 | 0.0666579 |
| Testing_P99 | Testing | 6378678 | 5938977 | 93.106706 | 31.878481 | 4.7458089 | 6.1098906 | 48.334604 | 0.1827868 | 3.5384152 | 0.1377145 |
| Testing_P100 | Testing | 6906790 | 6601317 | 95.577207 | 48.591972 | 2.7283722 | 3.5130263 | 26.581968 | 0.1049589 | 3.2326201 | 0.1542697 |
| Testing_P101 | Testing | 12112806 | 11040357 | 91.146156 | 52.948644 | 2.555097 | 2.1565335 | 24.991275 | 0.1112789 | 4.6550216 | 0.4254814 |
| Testing_P102 | Testing | 17877526 | 16345415 | 91.429961 | 57.885558 | 2.9464328 | 1.9318017 | 23.921944 | 0.1321737 | 4.0641912 | 0.3041719 |
| Testing_P103 | Testing | 9700641 | 8362116 | 86.201685 | 51.646968 | 3.6236382 | 2.7513969 | 32.173448 | 0.1202865 | 4.0092025 | 0.1684163 |
| Testing_P104 | Testing | 11180702 | 9938137 | 88.886521 | 40.701934 | 3.8412431 | 3.9040315 | 38.81798 | 0.162247 | 3.8225935 | 0.1479872 |
| Testing_P105 | Testing | 13826070 | 12902715 | 93.321638 | 57.585715 | 2.3800546 | 1.9469778 | 22.910791 | 0.0967477 | 4.7231326 | 0.2696861 |
| Testing_P106 | Testing | 14142420 | 13126680 | 92.817778 | 55.315315 | 3.2480477 | 2.3760616 | 27.092068 | 0.1062931 | 4.2354756 | 0.3015284 |
| Testing_P107 | Testing | 13853107 | 13372137 | 96.528071 | 26.393347 | 1.6428283 | 1.3065376 | 14.684302 | 0.0745194 | 2.0001048 | 0.0283463 |
| Testing_P108 | Testing | 12410136 | 11915628 | 96.015289 | 25.278224 | 2.2364271 | 1.3714342 | 16.013164 | 0.0973903 | 2.3386304 | 0.0577169 |
| Testing_P109 | Testing | 13862046 | 12715028 | 91.725478 | 62.216553 | 2.5854904 | 1.8185096 | 23.150763 | 0.0946649 | 3.4905809 | 0.2130104 |