

**Online resource 1:**

Vector transmission and epidemiology of ‘*Candidatus Phytoplasma pyri*’ in Austria

Journal of Plant Diseases and Protection

Monika Riedle-Bauer<sup>1</sup>, Caroline Paleskić<sup>1,2</sup>, Christina Schönhuber<sup>2</sup>, Martina Staples<sup>1</sup>, Günter Brader<sup>2\*</sup>

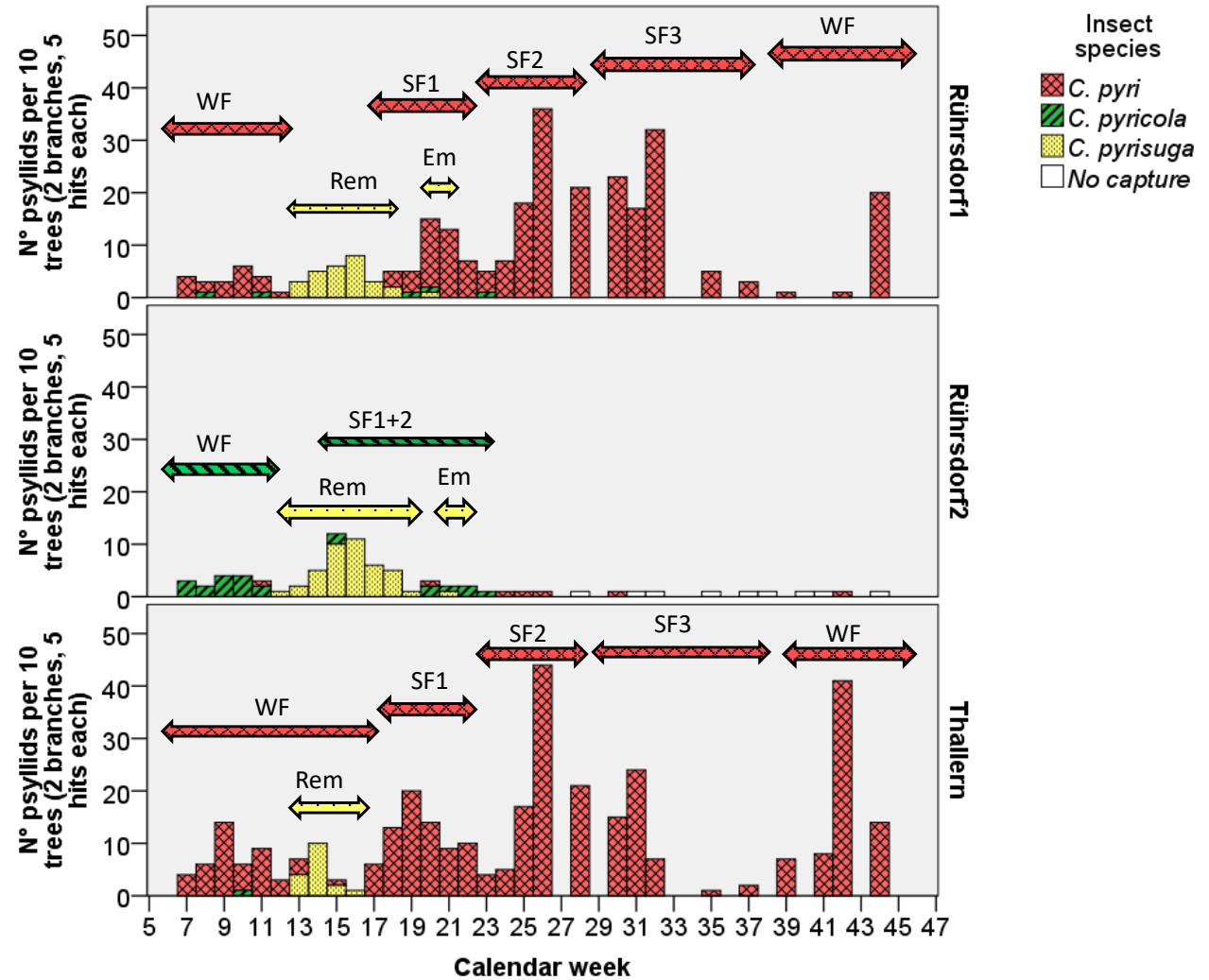
<sup>1</sup>Federal College and Research Institute for Viticulture and Pomology Klosterneuburg, Wienerstraße 74, 3400 Klosterneuburg, Austria; Monika.Riedle-Bauer@weinobst.at

<sup>2</sup>Austrian Institute of Technology, Konrad-Lorenz-Straße 24, 3430 Tulln, Austria

\* Corresponding author: [guenter.brader@ait.ac.at](mailto:guenter.brader@ait.ac.at); phone: +43(0) 50550-4669; fax: +43(0) 50550-3666

Captures of pear psyllids at the locations Rührsdorf 1, Rührsdorf 2 and Thallern, Lower Austria, in the course of the year 2014. Numbers represent total captures of insects on 10 trees (2 branches with 5 hits per tree).

WF-winterform individuals, SF1,2,3, Summerform individuals presumably 1<sup>st</sup>, 2<sup>nd</sup>, 3<sup>rd</sup> generation, Rem-remigrants, Em-Emigrants.



**Online resource 2:**

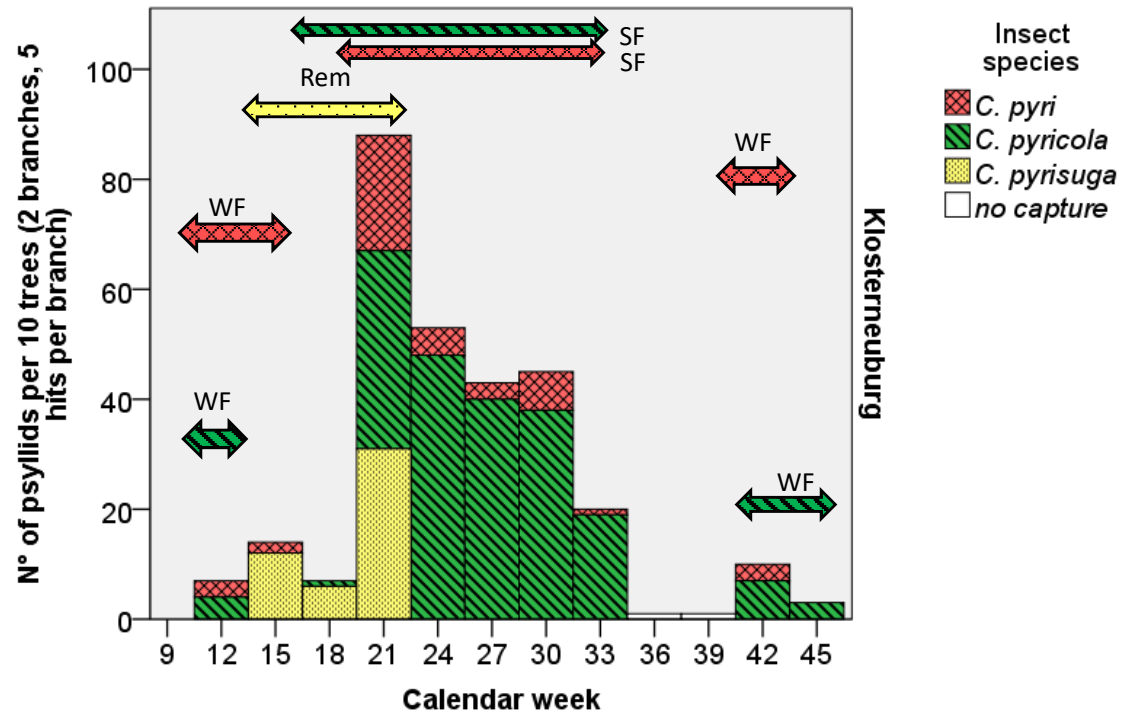
Vector transmission and epidemiology of ‘*Candidatus Phytoplasma pyri*’ in Austria  
Journal of Plant Diseases and Protection  
Monika Riedle-Bauer<sup>1</sup>, Caroline Paleskić<sup>1,2</sup>,  
Christina Schönhuber<sup>2</sup>, Martina Staples<sup>1</sup>, Günter Brader<sup>2\*</sup>

<sup>1</sup>Federal College and Research Institute for Viticulture and Pomology Klosterneuburg, Wienerstraße 74, 3400 Klosterneuburg, Austria; Monika.Riedle-Bauer@weinobst.at

<sup>2</sup>Austrian Institute of Technology, Konrad-Lorenz-Straße 24, 3430 Tulln, Austria

\* Corresponding author: [guenter.brader@ait.ac.at](mailto:guenter.brader@ait.ac.at); phone: +43(0) 50550-4669; fax: +43(0) 50550-3666

Captures of pear psyllids in Klosterneuburg in 2012. Numbers represent total captures of insects on 10 trees (2 branches with 5 hits each per tree).





#### Online resource 4:

Vector transmission and epidemiology of 'Candidatus  
Phytoplasma pyri' in Austria

Journal of Plant Diseases and Protection

Monika Riedle-Bauer<sup>1</sup>, Caroline Paleskić<sup>1,2</sup>, Christina  
Schönhuber<sup>2</sup>, Martina Staples<sup>1</sup>, Günter Brader<sup>2\*</sup>

<sup>1</sup>Federal College and Research Institute for Viticulture  
and Pomology Klosterneuburg, Wienerstraße 74, 3400  
Klosterneuburg, Austria; Monika.Riedle-  
Bauer@weinobst.at

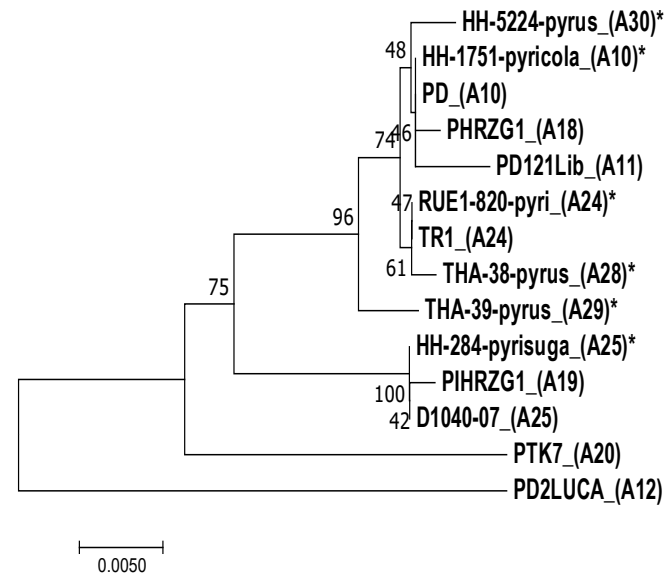
<sup>2</sup>Austrian Institute of Technology, Konrad-Lorenz-Straße  
24, 3430 Tulln, Austria

\* Corresponding author: [guenter.brader@ait.ac.at](mailto:guenter.brader@ait.ac.at);

phone: +43(0) 50550-4669; fax: +43(0) 50550-3666

Phylogenetic relationship of identified *aceF* (a) and *imp*  
(b) strains compared to strains of NCBI database. The  
optimal tree with the sum of branch length = 0.0988 (a)  
and 0.3276 (b) are shown. The percentage of replicate  
trees in which the associated taxa clustered together in  
the bootstrap test (1000 replicates) are shown next to  
the branches. Strains identified in this study are marked  
with an asterisk. In brackets after the strain name the A  
(*aceF*) and *imp* (I) nomenclature of Danet et al. (2011)  
and, if applicable, the A-K nomenclature of Bohunicka  
et al. (2018) is indicated.

a



b

