

Above blots belong to Figure 2 Panel A and placed in the same order as in panel A. Additionally, for Figure 2A all blots were flipped horizontally to allow direct comparison with other panels. 75kDa marker appears dim in all blots.

250  
150  
100  
75  
50  
37

WB:pSTAT5

250  
150  
100  
75  
50  
37

WB:STAT5

250  
150  
100  
75  
50  
37

WB:pErk

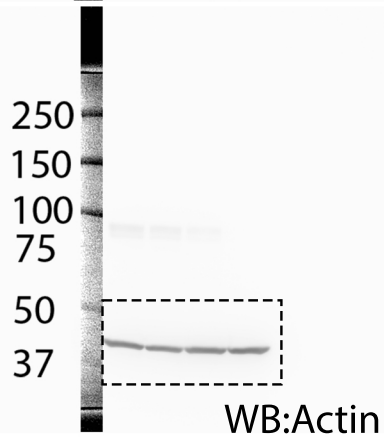
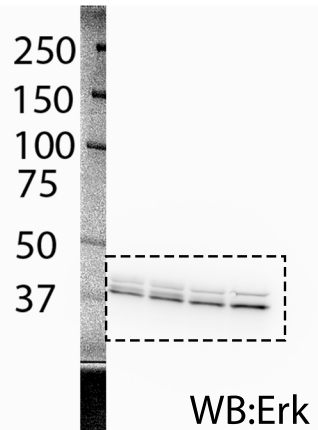
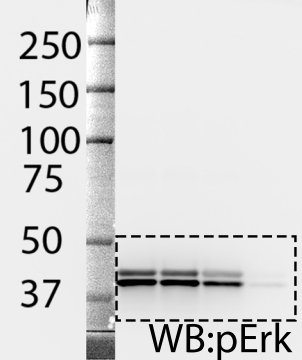
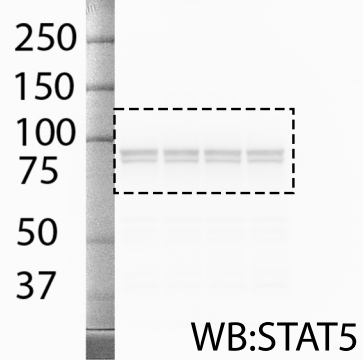
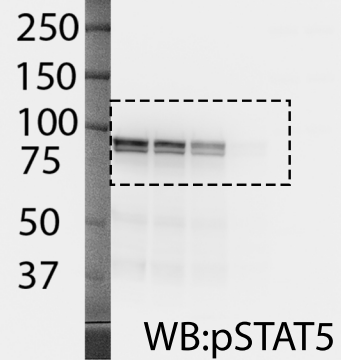
250  
150  
100  
75  
50  
37

WB:Erk

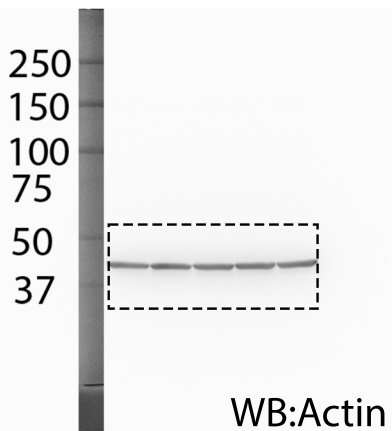
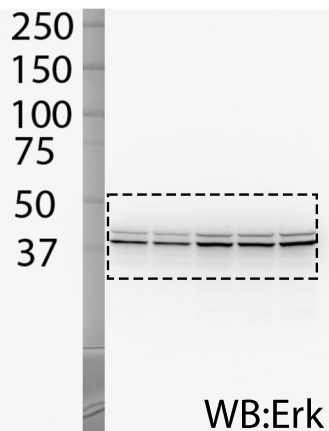
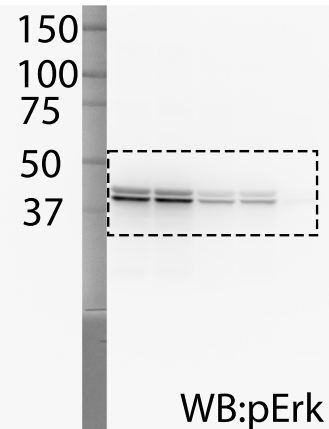
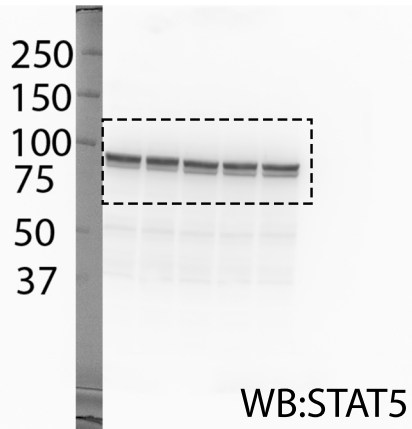
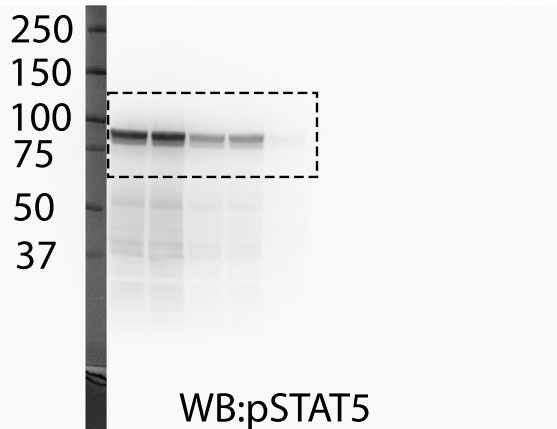
250  
150  
100  
75  
50  
37

WB:Actin

Above blots belong to Figure 2 Panel B and placed in the same order as in panel  
75kDa marker appears dim in all blots.

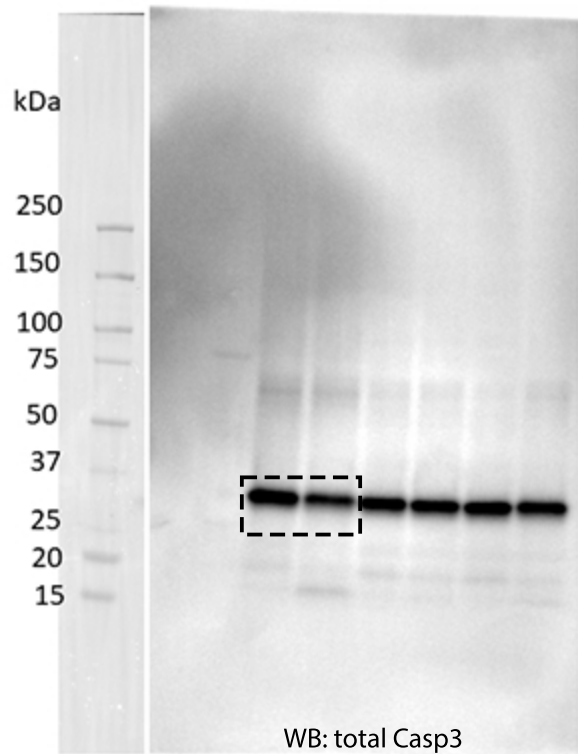


Above blots belong to Figure 2 Panel C and placed in the same order as in panel 75kDa marker appears dim in all blots.

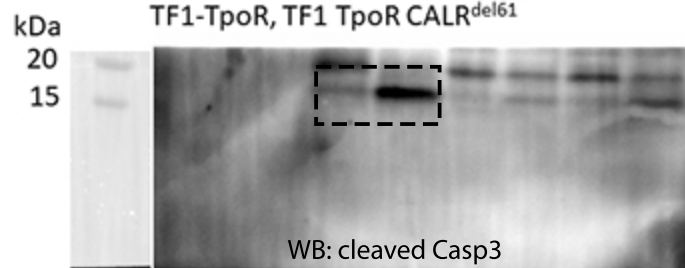


Above blots belong to Figure 2 Panel D and placed in the same order as in panel 75kDa marker appears dim in all blots.

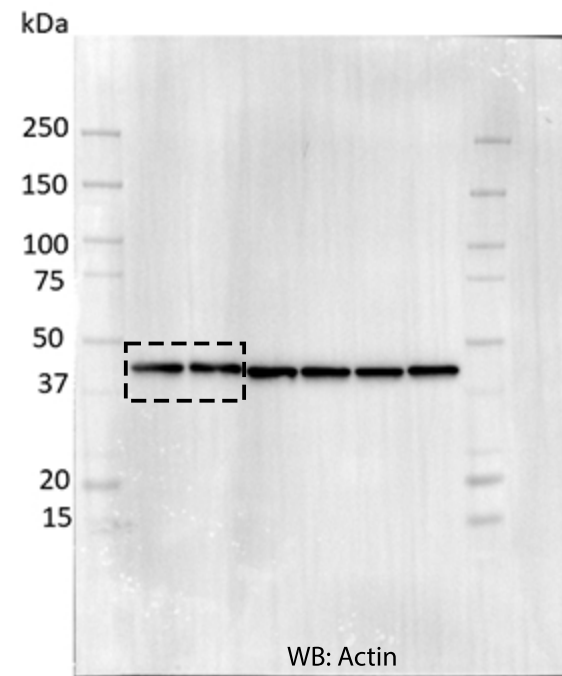
Total caspase 3  
TF1-TpoR, TF1 TpoR CALR<sup>del61</sup>



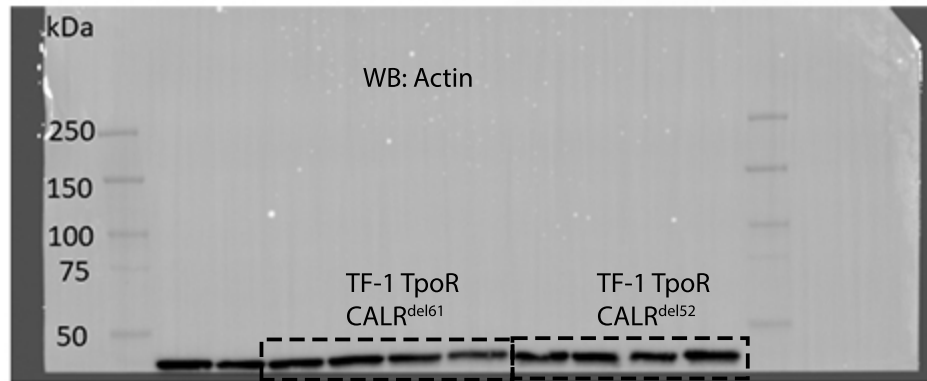
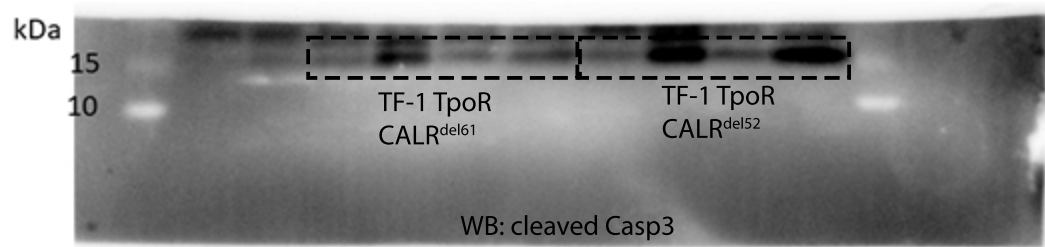
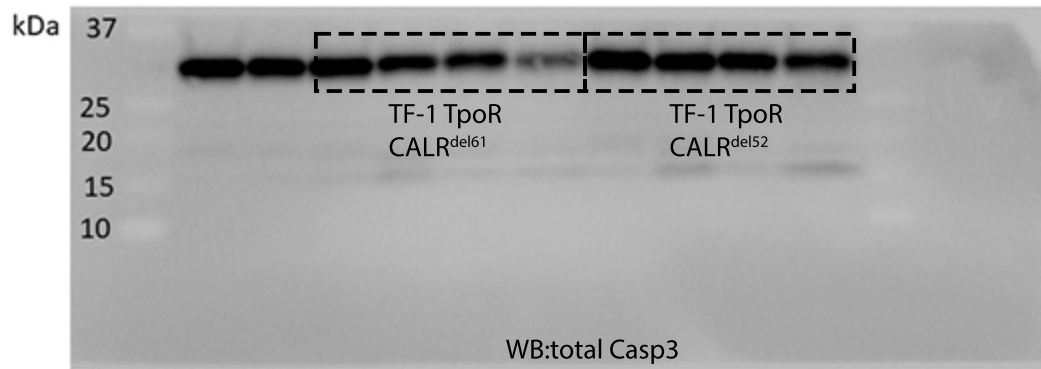
Cleaved caspase 3  
TF1-TpoR, TF1 TpoR CALR<sup>del61</sup>



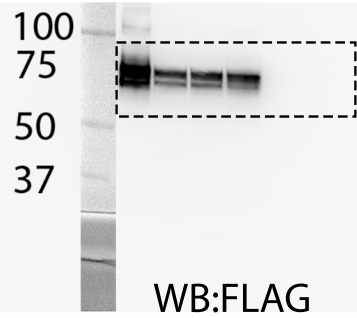
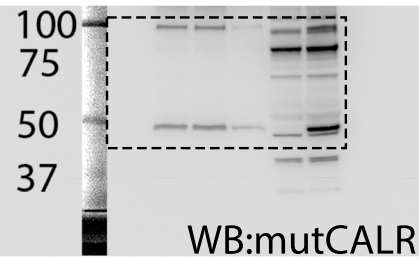
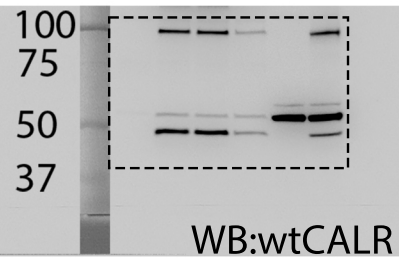
Actin  
TF1-TpoR, TF1 TpoR CALR<sup>del61</sup>



Above blots belong to Figure 2 Panel F left panel



Above blots belong to Figure 2 Panel F middle and right panel



Above blots belong to Figure 2 Panel G and placed in the same order as in panel 75kDa marker appears dim in all blots.