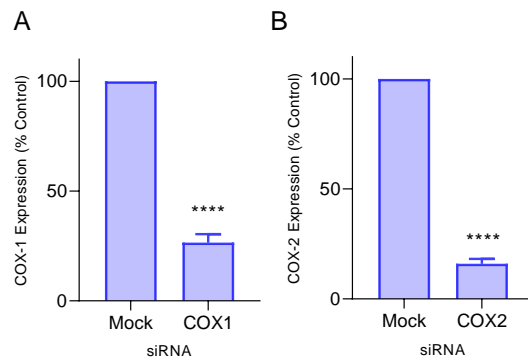
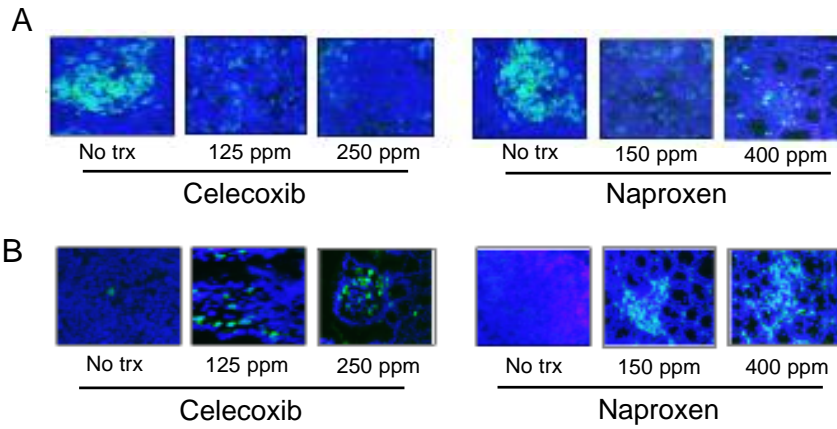


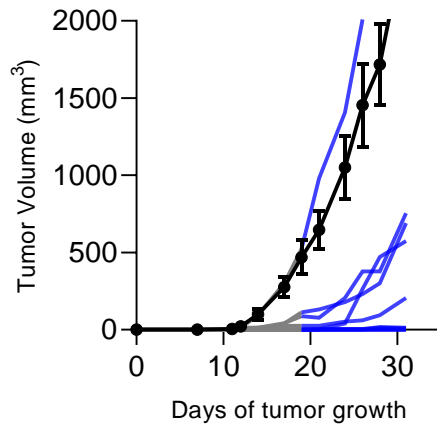
**Supplementary Figure 1. PGE<sub>2</sub> levels after naproxen or celecoxib treatment.** Mean ( $\pm$ SEM) PGE<sub>2</sub> levels in untreated cells, or after treatment with 100  $\mu$ M celecoxib or 1000  $\mu$ M naproxen in MC38 cells. n=3 independent experiments. Values corresponding to each experiment are denoted by matching symbols.



**Supplementary Figure 2. siRNA silencing of COX proteins.** Mean ( $\pm$ SD) percent control expression of (A) COX-1 and (B) COX-2 after gene silencing via siRNA in MC38 cells. \*\*\*\* $p < 0.0001$ .



**Supplementary Figure 3. Celecoxib and naproxen inhibit PD-L1 expression and increases CD8 T cells in the tumor.** Representative (A) PD-L1 and (B) CD8 IHC in tumors from the F1min mice for the indicated treatment and dose.



**Supplementary Figure 4. Discontinuing naproxen treatment results in tumor growth in the majority of mice.** Tumor volume in untreated mice (mean±SEM; black line) or in mice treated with 400 ppm naproxen (individual mice; gray lines) and then when naproxen treatment was discontinued in the same mice (blue lines). n=10 mice/group.