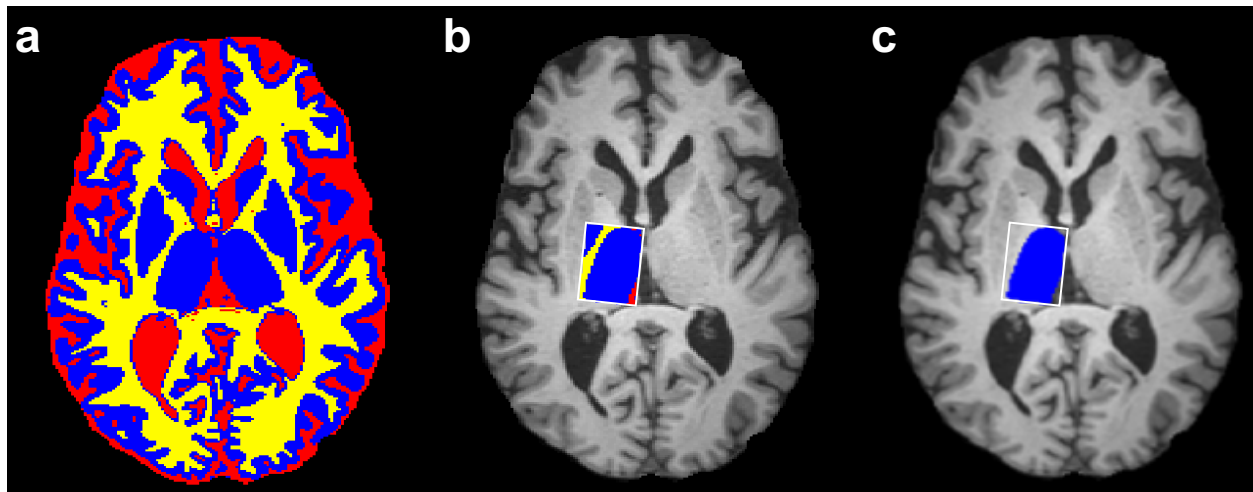


## SUPPLEMENTARY MATERIAL



**Supplementary Fig. 1** Tissue segmentation for compartment correction. **a** Grey matter (GM, blue), white matter (WM, yellow), and cerebral spinal fluid (CSF, red) tissue segmentation was obtained by merging the results from FSL FAST and FIRST. **b** The MRS voxel mask was then applied to the tissue segmentation to determine the tissue voxel fractions for GM, WM and CSF. **c** Voxel fraction corresponding to the thalamus.