

Supplementary

Table S1 The list of m6a-related genes

Gene	Type
METTL3	writers
METTL14	writers
METTL16	writers
WTAP	writers
VIRMA	writers
ZC3H13	writers
RBM15	writers
RBM15B	writers
YTHDC1	readers
YTHDC2	readers
YTHDF1	readers
YTHDF2	readers
YTHDF3	readers
HNRNPC	readers
FMR1	readers
LRPPRC	readers
HNRNPA2B1	readers
IGF2BP1	readers
IGF2BP2	readers
IGF2BP3	readers
RBMX	readers
FTO	erasers
ALKBH5	erasers

Table S2 The list of 234 potential-m6A-related lncRNAs

ID
AC084824.5
SNHG10
AC006449.2
LENG8-AS1
RAD51-AS1
AL022328.2
AC127024.4
AC084036.1
AC009948.1
AL358472.2
AC093157.1
AC125257.1
AC095057.3
OTUD6B-AS1
AL513534.1
AC009318.2
AC010761.1
AL590705.3
LINC02035
AL365203.2
AC132192.2
AL135999.1
AC007938.3
AC138028.4
AC007541.1
AP006621.2
AL365330.1
AC093620.1
NUTM2A-AS1
HCG11
AC120053.1
EBLN3P
SNHG20
AC093726.2
NIFK-AS1
AP003352.1

Table S2 (continued)

Table S2 (continued)

ID
SLC25A25-AS1
TMEM147-AS1
HCG18
AC092171.4
AL355488.1
LINC01945
AC008124.1
SPRY4-AS1
LINC00909
HOTAIRM1
AL035563.1
AL359504.2
WAC-AS1
AC010542.5
AC012360.3
AC005034.3
AP003392.1
LINC01560
APTR
RAMP2-AS1
GAS5-AS1
AL122035.1
AL132989.1
DLEU2
AC093726.1
RHPN1-AS1
GARS-DT
AC012467.2
AC007566.1
AC093484.4
AC024060.1
AL050341.2
LINC00641
FGD5-AS1
AC079684.1
PTOV1-AS2

Table S2 (continued)**Table S2** (continued)

ID
ANKRD10-IT1
MALAT1
MIR503HG
AC007406.5
AC127502.2
AC027031.2
AC060780.1
LINC01355
CASC15
Z83843.1
AC004908.2
CRNDE
OIP5-AS1
AC090589.3
AC087481.3
ADNP-AS1
EIF3J-DT
RPARP-AS1
AC008735.2
AC009113.1
SNHG1
AL136295.7
AC074117.1
AC139795.2
MAPKAPK5-AS1
MHENCN
AC008669.1
SNHG12
AC009812.4
ATP2B1-AS1
ZNF674-AS1
AP001469.3
AC093673.1
THUMP3-AS1
AC139887.2
NCK1-DT

Table S2 (continued)

Table S2 (continued)

ID
NNT-AS1
AC073842.2
THCAT158
PSPC1-AS2
AC010834.3
MAGI2-AS3
AC080013.4
SP2-AS1
AC098484.1
AL365361.1
LINC00174
AC002553.2
AC007038.2
AC093227.1
TMCC1-AS1
SDCBP2-AS1
SNHG16
AC015911.3
AC092953.2
NORAD
ZFPM2-AS1
AC004908.1
AC083799.1
CCDC18-AS1
LINC01176
AC009118.3
DICER1-AS1
AC012615.1
AC022150.2
AL049840.1
AC010326.3
AC015871.3
AC010883.1
AC104083.1
AC090559.1
AL139089.1

Table S2 (continued)**Table S2** (continued)

ID
AL139287.1
AC245060.2
AC090198.1
INE1
AC008074.2
AL354733.3
LRRC75A-AS1
PSMA3-AS1
AL928654.2
AC011477.3
AC011451.1
AL080317.1
ZNF528-AS1
GAS5
SCAMP1-AS1
TRAM2-AS1
C5orf56
AC064807.1
CPB2-AS1
SNHG21
JPX
AC099850.3
AC004253.1
AC108010.1
AC084824.4
AL390728.6
SNHG4
CCNT2-AS1
AC009120.2
AC026401.3
LINC01578
AC011477.2
AL450384.2
AC018647.2
AL133243.2
AC021078.1

Table S2 (continued)

Table S2 (continued)

ID
AL358472.3
ARMCX5-GPRASP2
AC019131.2
AL035587.1
AC005034.5
AC008393.1
AC093297.2
AC084018.1
PWAR6
AC018690.1
DHRS4-AS1
AL133371.2
AL136304.1
AC005332.6
ASH1L-AS1
AC004918.1
AL109811.3
AC004148.2
DLEU1
TMEM161B-AS1
AC002550.2
AC005046.1
AC092747.4
UBR5-AS1
AL359076.1
AC132872.3
AC116914.2
AC064875.1
AC005288.1
LINC01004
CARD8-AS1
AC027097.1
USP46-AS1
AC011450.1
AP005482.3
AC009283.1

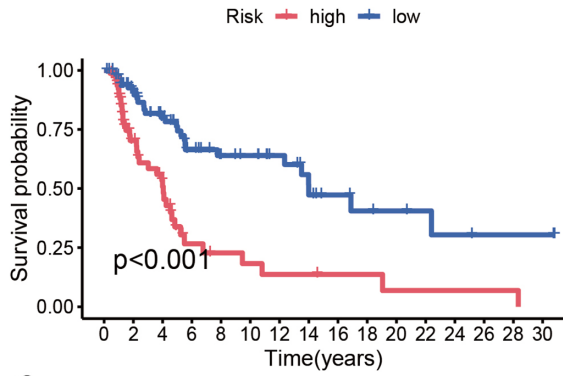
Table S2 (continued)**Table S2** (continued)

ID
AC015849.3
AC079807.1
MIR600HG
AC026271.3
AC073046.1
RUSC1-AS1
AC127024.5
AL590764.1
SMIM25
AL035461.2
THAP9-AS1
PAXIP1-AS2
MSC-AS1
AC000123.1
AL121894.2
AC005104.1
Z97989.1
AC018752.1

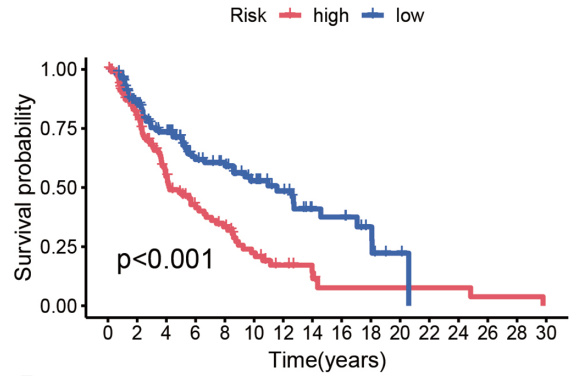
Table S3 The list of 10 potential-m6A-related lncRNAs with the highest prognostic value

Gene	Coef
EBLN3P	-0.032835
SPRY4.AS1	-0.296288
WAC.AS1	-0.029493
AC093726.1	-0.001603
AC015911.3	-0.280683
AC083799.1	-0.04498
AC090559.1	-0.006413
C5orf56	-0.22694
AL133371.2	-0.042645
AC092747.4	-0.038008

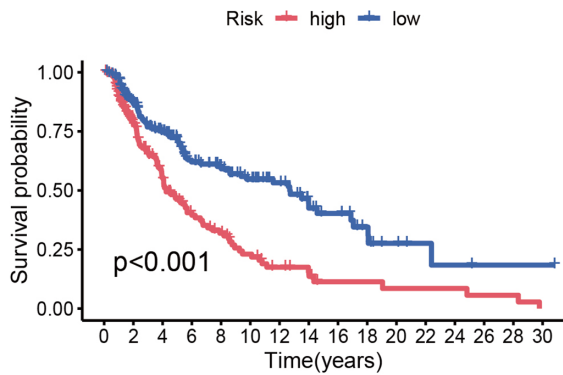
A Patients with FEMALE



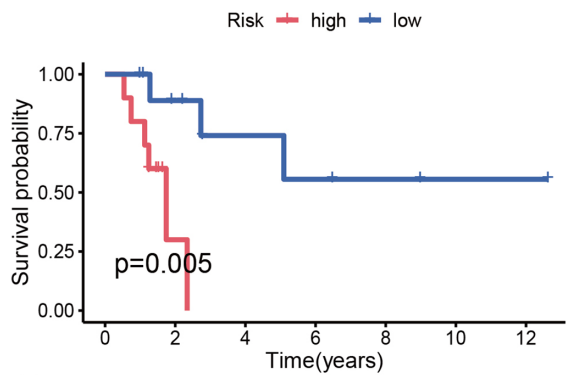
B Patients with MALE



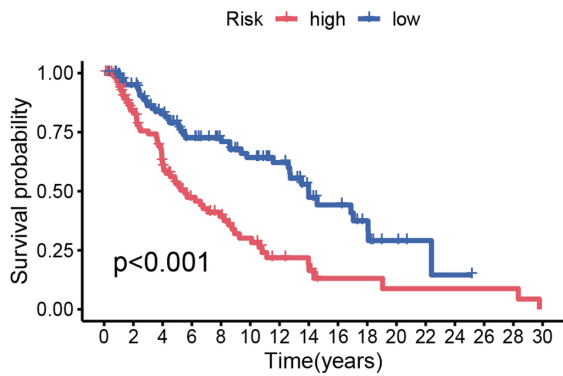
C Patients with M0



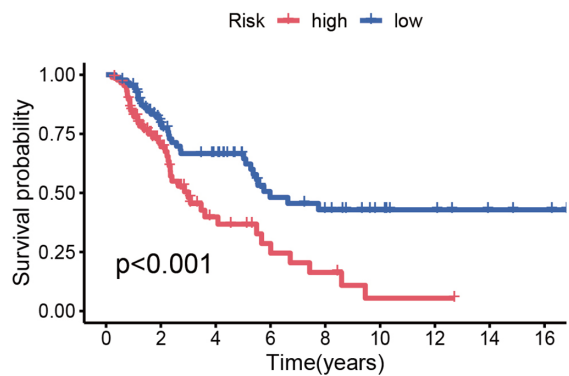
D Patients with M1



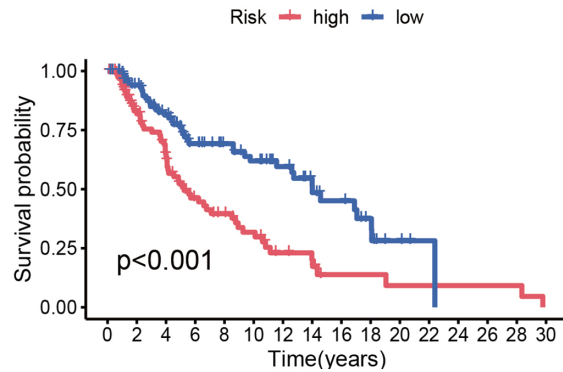
E Patients with N0



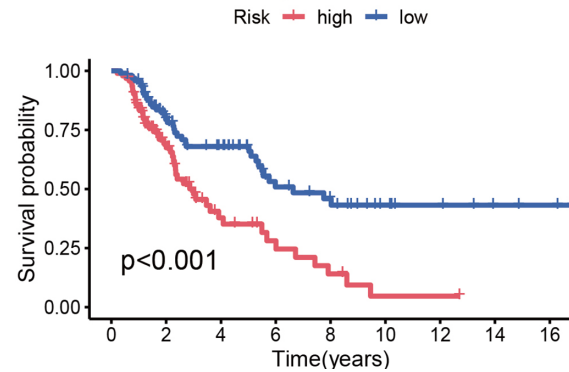
F Patients with N1-3



G Patients with Stage 0-II



H Patients with Stage III-IV



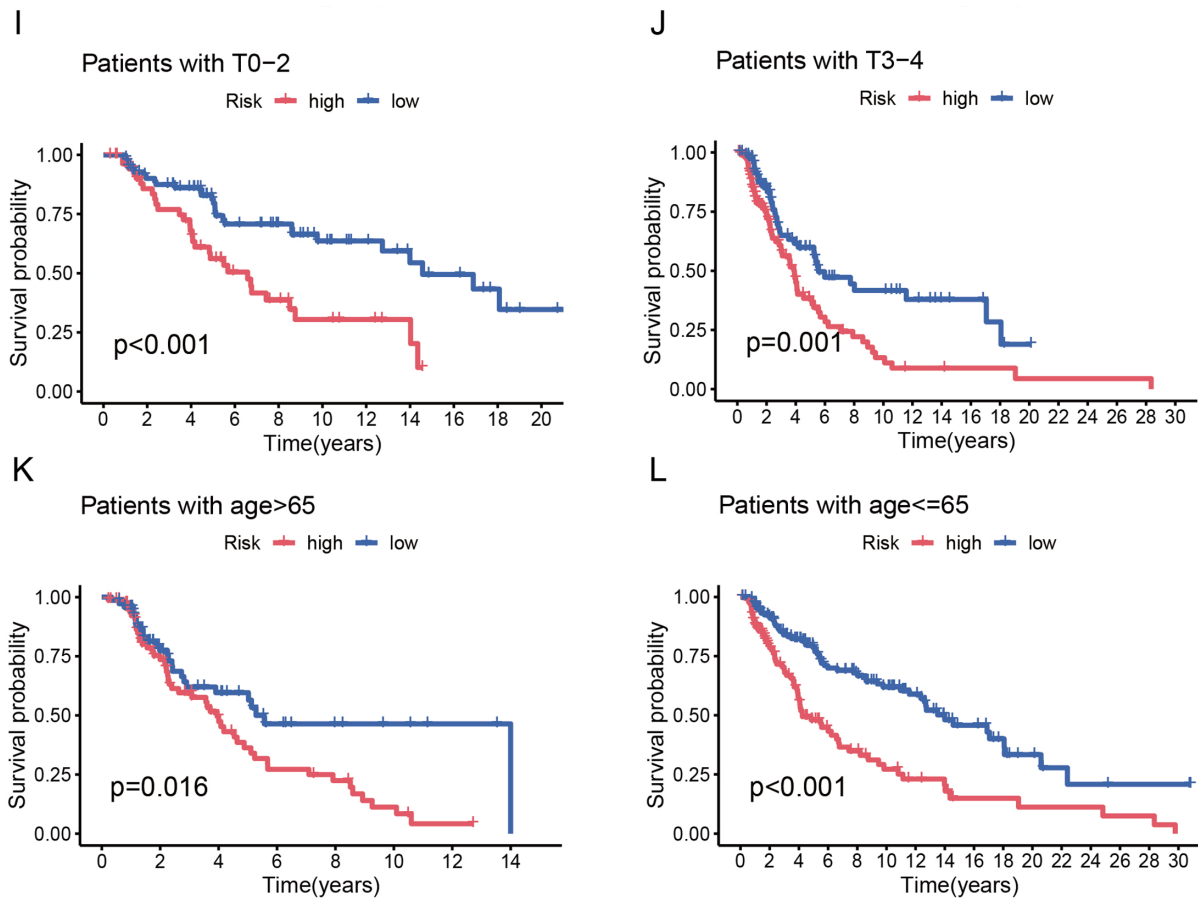
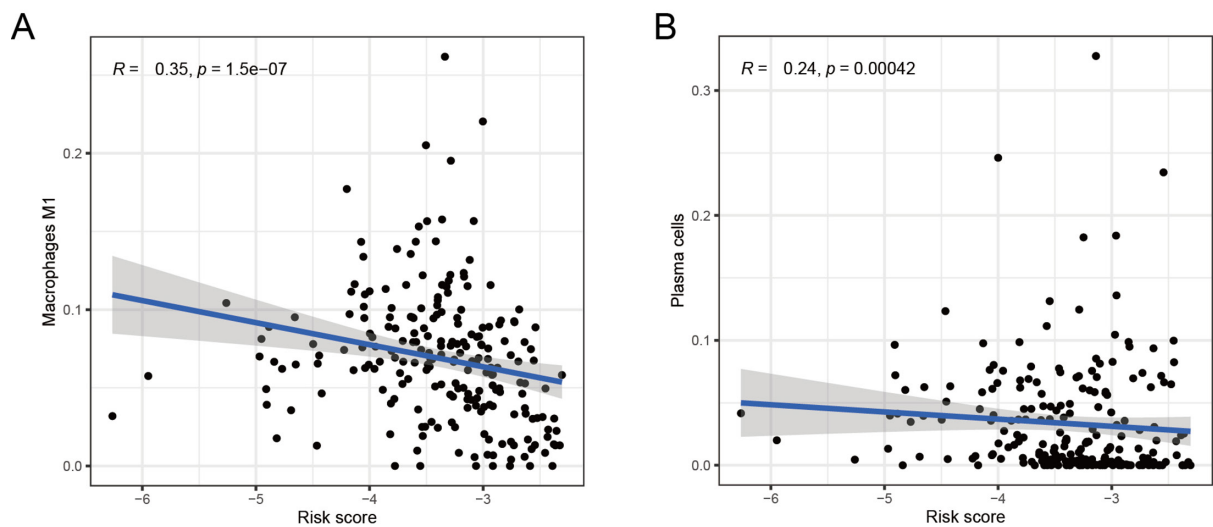
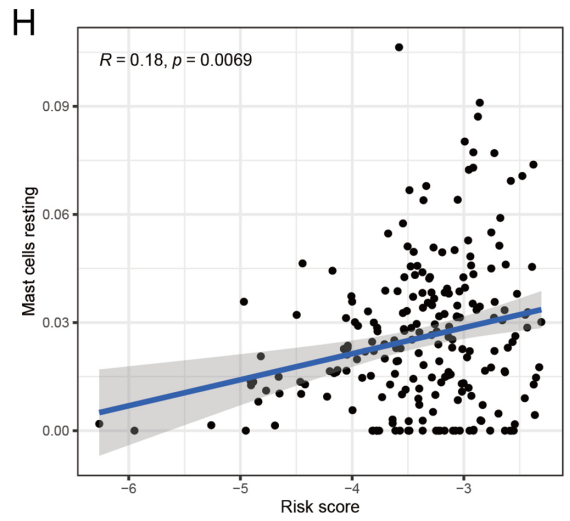
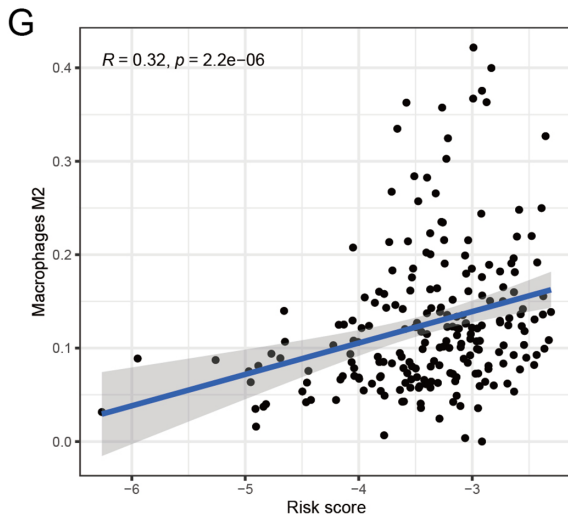
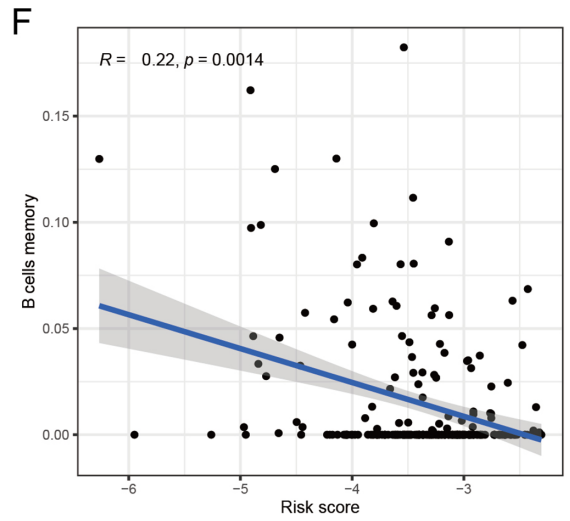
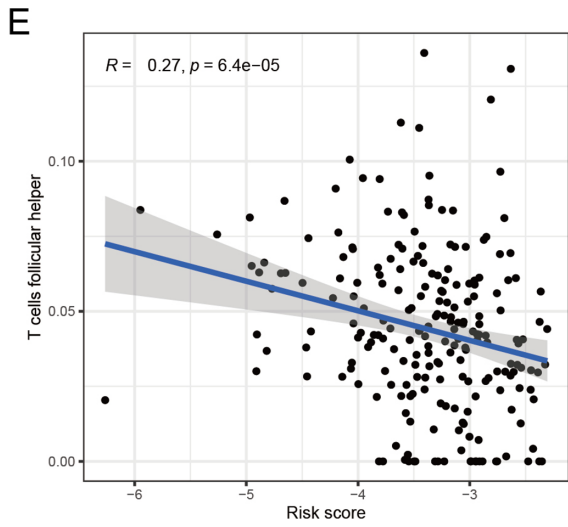
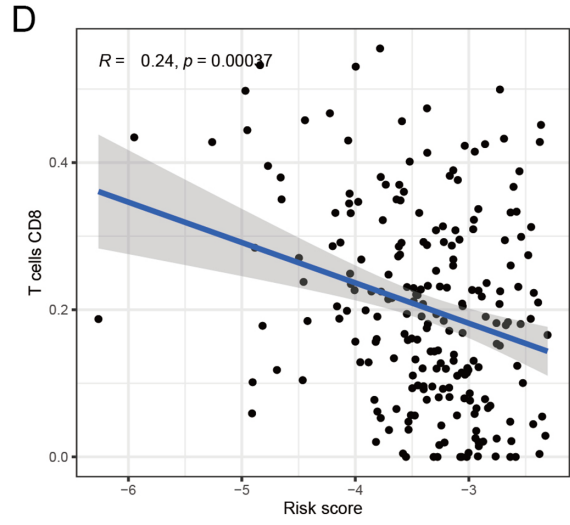
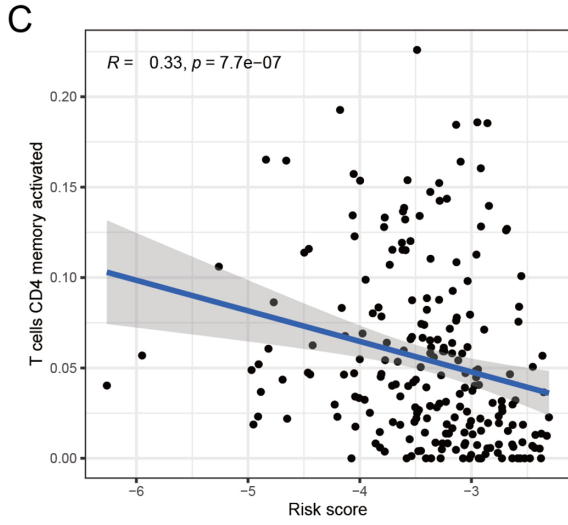


Figure S1 Subgroup survival analysis. (A) Female subgroup. (B) Male subgroup. (C) M0 subgroup. (D) M1 subgroup. (E) N0 subgroup. (F) N1-3 subgroup. (G) Stage 0-II subgroup. (H) Stage III-IV subgroup. (I) T0-2 subgroup. (J) T3-4 subgroup. (K) Age >65 subgroup. (L) Age ≤65 subgroup.





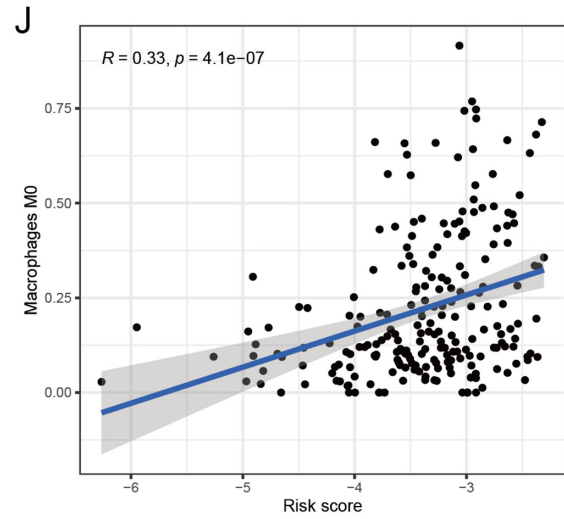
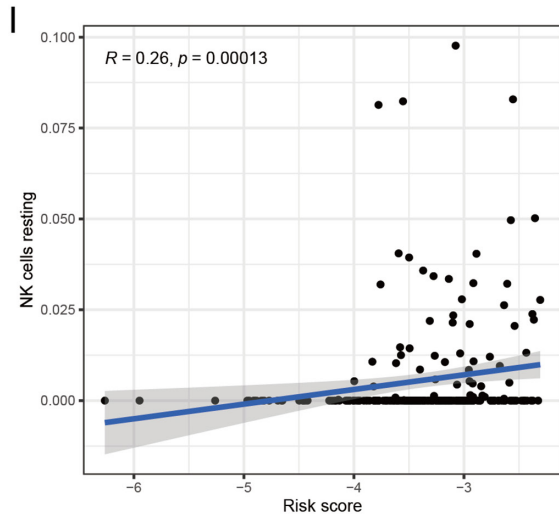


Figure S2 Correlation analysis between the risk score and immune infiltration. (A) M1 macrophages. (B) Plasma cells. (C) Activated memory CD4 T cells. (D) CD8 T cells. (E) T follicular helper cells. (F) Memory B cells. (G) M2 macrophages. (H) Resting mast cells. (I) Resting NK cells. (J) M0 macrophages.