

Supplemental Online Content

Offodile AC II, Lin YL, Melamed A, Rauh-Hain JA, Kinzer D, Keating NL. Association of Maryland global budget revenue with spending and outcomes related to surgical care for Medicare beneficiaries with cancer. *JAMA Surg*. Published online April 6, 2022.
doi:10.1001/jamasurg.2022.0135

eMethods.

- A. Identify hospitals providing cancer surgeries in 2013
- B. Study cohort selection
- C. Model specification for estimating difference-in-differences
- D. Counterfactual assumption
- E. Surgery codes for identifying cancer surgeries

eTable 1. Selection of cancer surgery episodes in 2013 in Maryland and control states

eTable 2. Patient characteristics in the main cohort (all inpatient and outpatient cancer surgical episodes from Maryland and matched control hospitals)

eTable 3. Characteristics of patients receiving a major cancer surgery

eFigure 1. Annual difference-in-differences estimates: main cohort

eFigure 2. Annual difference-in-differences estimates: inpatient major cancer surgery subcohort

eTable 4. Surgery codes for identifying cancer surgeries

eReferences

This supplemental material has been provided by the authors to give readers additional information about their work.

A. Identify hospitals providing cancer surgeries in 2013

eTable 1. Selection of cancer surgery episodes in 2013 in Maryland and control states

	Maryland		Control states	
	N, patients	%, prior step	N, patients	%, prior step
Select Medicare beneficiaries residing in Maryland and control states [#] , who had cancer-related surgery [†] in a short term hospital within the same state as their residence.	3,893		6,359	
For Maryland, exclude those whose surgery performed in the 10 hospitals in the TPR program [‡] .	3,525	90.5%	6,359	100.0%
Select those who were 66 or older at the surgery.	3,026	85.8%	5,262	82.7%
Select those who had continuous parts A&B without managed care enrollment in the 12 months before surgery admission and 30 days after discharge or till death if they died within 30 days of discharge.	2,634	87.0%	4,735	90.0%
Exclude surgery claims not reimbursed by Medicare	2,619	99.4%	4,710	99.5%

[#]Including Arizona, Arkansas, California, Colorado, Connecticut, Delaware, District of Columbia, Hawaii, Illinois, Iowa, Kentucky, Massachusetts, Minnesota, Nevada, New Jersey, New Mexico, New York, North Dakota, Ohio, Oregon, Rhode Island, Vermont, Washington, and West Virginia. For Maryland, West Virginia, Delaware, and DC, 100% Medicare data were available; for other states, 5% data were available.

[†]Identified from inpatient and outpatient claims using surgery codes in Oncology Care Model (ref 1) and additional codes from literature (ref 2). Codes for reconstruction or repair procedures were not used. All surgery claims need to be accompanied with a cancer diagnosis code (ref 1) as the primary diagnosis. The complete list of surgery codes is at the end of the supplement (eTable 4). Emergent surgeries were not included.

[‡]TPR=Total Patient Revenue.

At the end of the selection, there were 35 hospitals from Maryland and 805 hospitals from control states. We used the greedy nearest neighbor matching technique to match these two groups of hospitals by the propensity of being a Maryland hospital, estimated by a logistic regression model which included the hospital characteristics in 2013: total beds, resident to bed ratio, disproportionate share hospital patient percent, percent capacity (average daily census divided by total beds), transfer-adjusted case mix, total inpatient surgical operations, total outpatient surgical operations, nurse staffing ratio (ref 3), and medical school affiliation.

B. Study cohort selection

We followed the same selection process in eTable 1 to identify patients with cancer surgery at the 136 matched hospitals (35 in Maryland and 101 in control states) between January 2011 and November 2018. At the end of the selection, for each Maryland hospital, we made sure its matched controls had data from the same data years and vice versa. For example, if a Maryland hospital has data between 2011 and 2016 while its matched control hospitals have data between 2012 and 2018, the data between 2012 and 2016 for this matched set of hospitals would be included in the analysis. With this restriction, all matched sets still had data from both pre- and post-GBR periods.

eTable 2 shows the number of patients receiving a cancer surgery in Maryland and matched control hospitals by year as well as their characteristics. eTable 3 shows the characteristics of patients receiving an inpatient major cancer surgery (ref 2, eTable 4).

eTable 2. Patient characteristics in the main cohort (all inpatient and outpatient cancer surgical episodes from Maryland and matched control hospitals)

Patient characteristic	Maryland	Control states	Abs. std. diff.
	n= 20320	n= 4737	
	n (%)		
Surgery year			
2011	2296 (11.3)	663 (14.0)	
2012	2299 (11.3)	588 (12.4)	
2013	2619 (12.9)	638 (13.5)	
2014	2634 (13.0)	614 (13.0)	
2015	2594 (12.8)	605 (12.8)	
2016	2717 (13.4)	566 (11.9)	
2017	2684 (13.2)	564 (11.9)	
2018, Jan-Nov	2477 (12.2)	499 (10.5)	
Age at surgery			0.04
66-69	5087 (25.0)	1193 (25.2)	
70-74	5897 (29.0)	1385 (29.2)	
75-79	4397 (21.6)	1032 (21.8)	
80-84	2980 (14.7)	665 (14.0)	
85+	1959 (9.6)	462 (9.8)	
Sex			0.02
Male	6252 (30.8)	1414 (29.9)	
Female	14068 (69.2)	3323 (70.1)	
Race			0.48
NH white	15142 (74.5)	4265 (90.0)	
NH Black	4106 (20.2)	245 (5.2)	
Asian/Pacific Islander	440 (2.2)	58 (1.2)	
Hispanic	304 (1.5)	97 (2.0)	
Other	328 (1.6)	72 (1.5)	
Dual eligible at the month of surgery discharge			0.12
No	18615 (91.6)	4166 (87.9)	
Yes	1705 (8.4)	571 (12.1)	
Cancer diagnosis			0.23
Breast	8106 (39.9)	2119 (44.7)	
Colorectal	2711 (13.3)	778 (16.4)	
Lung	2096 (10.3)	444 (9.4)	
Prostate	1237 (6.1)	347 (7.3)	

Bladder	792 (3.9)	172 (3.6)	
Female GU	1389 (6.8)	255 (5.4)	
Kidney	993 (4.9)	248 (5.2)	
Metastasis	640 (3.1)	88 (1.9)	
Other	2356 (11.6)	286 (6.0)	
Had any nursing facility service in the 90 days before surgery			0.01
No	19925 (98.1)	4640 (98.0)	
Yes	395 (1.9)	97 (2.0)	
Index surgery setting			0.12
IP	12210 (60.1)	2566 (54.2)	
OP	8110 (39.9)	2171 (45.8)	
Diabetes			0.04
No	12977 (63.9)	3146 (66.4)	
Without complication	3774 (18.6)	858 (18.1)	
With complication	3569 (17.6)	733 (15.5)	
Septicemia, Sepsis, Systemic Inflammatory Response Syndrome/Shock			0.02
No	19642 (96.7)	4594 (97.0)	
Yes	678 (3.3)	143 (3.0)	
HIV/AIDS/Opportunistic Infections			0.03
No	20159 (99.2)	4711 (99.5)	
Yes	161 (0.8)	26 (0.5)	
Protein-Calorie Malnutrition			0.02
No	19964 (98.2)	4638 (97.9)	
Yes	356 (1.8)	99 (2.1)	
Morbid Obesity			0.05
No	19211 (94.5)	4525 (95.5)	
Yes	1109 (5.5)	212 (4.5)	
Other Significant Endocrine and Metabolic Disorders			0.02
No	18914 (93.1)	4390 (92.7)	
Yes	1406 (6.9)	347 (7.3)	
End-Stage Liver Disease			0.04
No	19990 (98.4)	4683 (98.9)	
Yes	330 (1.6)	54 (1.1)	
GI diseases (Chronic Hepatitis, Chronic Pancreatitis, Inflammatory Bowel Disease)			0.04
No	19748 (97.2)	4630 (97.7)	
Yes	572 (2.8)	107 (2.3)	
Intestinal Obstruction/Perforation			<0.01
No	19483 (95.9)	4543 (95.9)	
Yes	837 (4.1)	194 (4.1)	
Bone/Joint/Muscle Infections/Necrosis			0.01
No	20138 (99.1)	4689 (99.0)	
Yes	182 (0.9)	48 (1.0)	
Rheumatoid Arthritis and Inflammatory Connective Tissue Disease			0.04
No	18955 (93.3)	4373 (92.3)	
Yes	1365 (6.7)	364 (7.7)	
Hematological Disorders			0.07
No	18106 (89.1)	4314 (91.1)	
Yes	2214 (10.9)	423 (8.9)	
Disorders of Immunity			0.01
No	19527 (96.1)	4561 (96.3)	
Yes	793 (3.9)	176 (3.7)	
Drug/Alcohol Dependence			0.04
No	19954 (98.2)	4674 (98.7)	

Yes	366 (1.8)	63 (1.3)	
Major psychiatric disorder			0.02
No	19278 (94.9)	4468 (94.3)	
Yes	1042 (5.1)	269 (5.7)	
Spinal Cord Injury/Paralytic disorders			0.02
No	20065 (98.7)	4688 (99.0)	
Yes	255 (1.3)	49 (1.0)	
Neurological disorders affecting motor function			0.01
No	19740 (97.1)	4608 (97.3)	
Yes	580 (2.9)	129 (2.7)	
Other Neurologic disorders (Multiple Sclerosis, Seizure, Coma, Brain Anoxic Damage)			0.02
No	19761 (97.2)	4623 (97.6)	
Yes	559 (2.8)	114 (2.4)	
Respirator Dependence/Tracheostomy Status			<0.01
No	20253 (99.7)	4722 (99.7)	
Yes	67 (0.3)	15 (0.3)	
Cardio-respiratory failure			0.05
No	19697 (96.9)	4552 (96.1)	
Yes	623 (3.1)	185 (3.9)	
Congestive Heart Failure			<0.01
No	17458 (85.9)	4070 (85.9)	
Yes	2862 (14.1)	667 (14.1)	
Acute Myocardial Infarction/Angina/Other Acute Ischemic Heart Disease			0.04
No	19010 (93.6)	4378 (92.4)	
Yes	1310 (6.4)	359 (7.6)	
Specified Heart Arrhythmias			0.03
No	16759 (82.5)	3861 (81.5)	
Yes	3561 (17.5)	876 (18.5)	
Cerebrovascular insult			0.04
No	19122 (94.1)	4505 (95.1)	
Yes	1198 (5.9)	232 (4.9)	
Severe peripheral vascular disease			0.01
No	19386 (95.4)	4531 (95.7)	
Yes	934 (4.6)	206 (4.3)	
Vascular Disease			<0.01
No	15723 (77.4)	3666 (77.4)	
Yes	4597 (22.6)	1071 (22.6)	
Cystic Fibrosis/Fibrosis of Lung and Other Chronic Lung Disorders			0.01
No	19782 (97.4)	4602 (97.2)	
Yes	538 (2.6)	135 (2.8)	
Chronic Obstructive Pulmonary Disease			0.1
No	16125 (79.4)	3557 (75.1)	
Yes	4195 (20.6)	1180 (24.9)	
Pneumonia			0.01
No	19946 (98.2)	4645 (98.1)	
Yes	374 (1.8)	92 (1.9)	
Exudative Macular Degeneration			0.01
No	19899 (97.9)	4632 (97.8)	
Yes	421 (2.1)	105 (2.2)	
Acute Renal Failure			0.01
No	19042 (93.7)	4453 (94.0)	
Yes	1278 (6.3)	284 (6.0)	
Chronic Kidney Disease			<0.01

No	19834 (97.6)	4624 (97.6)	
Yes	486 (2.4)	113 (2.4)	
Skin Ulcer			0.03
No	19793 (97.4)	4592 (96.9)	
Yes	527 (2.6)	145 (3.1)	
Head Injury			0.01
No	20220 (99.5)	4709 (99.4)	
Yes	100 (0.5)	28 (0.6)	
Hip/Vertebral Fractures without Spinal Cord Injury			0.05
No	19853 (97.7)	4589 (96.9)	
Yes	467 (2.3)	148 (3.1)	
Limb Amputation			0.02
No	20173 (99.3)	4710 (99.4)	
Yes	147 (0.7)	27 (0.6)	
Complications of Specified Implanted Device or Graft			0.04
No	19677 (96.8)	4621 (97.6)	
Yes	643 (3.2)	116 (2.4)	
Artificial Openings for Feeding or Elimination			0.06
No	19758 (97.2)	4647 (98.1)	
Yes	562 (2.8)	90 (1.9)	

Abs. std. diff. = Absolute standardized difference.

eTable 3. Characteristics of patients receiving a major cancer surgery

Patient characteristic	Maryland	Control states	Abs. std. diff.
	n= 6858	n= 1686	
	n (%)		
Surgery year			
2011	938 (13.7)	245 (14.5)	
2012	799 (11.7)	215 (12.8)	
2013	913 (13.3)	250 (14.8)	
2014	963 (14.0)	225 (13.3)	
2015	890 (13.0)	221 (13.1)	
2016	855 (12.5)	187 (11.1)	
2017	838 (12.2)	192 (11.4)	
2018, Jan-Nov	662 (9.7)	151 (9.0)	
Age at surgery			0.06
66-69	1440 (21.0)	374 (22.2)	
70-74	1991 (29.0)	487 (28.9)	
75-79	1629 (23.8)	378 (22.4)	
80-84	1159 (16.9)	284 (16.8)	
85+	639 (9.3)	163 (9.7)	
Sex			0.07
Male	3310 (48.3)	869 (51.5)	
Female	3548 (51.7)	817 (48.5)	
Race			0.48
NH white	5249 (76.5)	1541 (91.4)	
NH Black	1247 (18.2)	69 (4.1)	
Asian/Pacific Islander	166 (2.4)	30 (1.8)	
Hispanic	100 (1.5)	35 (2.1)	
Other	96 (1.4)	11 (0.7)	
Dual eligible at the month of surgery discharge			0.14
No	6303 (91.9)	1479 (87.7)	
Yes	555 (8.1)	207 (12.3)	
Cancer diagnosis			0.28
Breast	-	-	
Colorectal	2334 (34.0)	737 (43.7)	
Lung	1726 (25.2)	405 (24.0)	
Prostate	-	-	
Bladder	520 (7.6)	116 (6.9)	
Female GU	149 (2.2)	13 (0.8)	
Kidney	801 (11.7)	226 (13.4)	
Metastasis	261 (3.8)	37 (2.2)	
Other	1067 (15.6)	152 (9.0)	
Surgery type			0.33
Colectomy	2640 (38.5)	790 (46.9)	
Cystectomy	316 (4.6)	60 (3.6)	
Esophagectomy/Gastrectomy	302 (4.4)	46 (2.7)	
Lung resection	1899 (27.7)	441 (26.2)	
Nephrectomy	1024 (14.9)	280 (16.6)	
Pancreatectomy	438 (6.4)	41 (2.4)	
Multiple surgeries	239 (3.5)	28 (1.7)	
Had any nursing facility service in the 90 days before surgery			0.02
No	6711 (97.9)	1645 (97.6)	
Yes	147 (2.1)	41 (2.4)	
Diabetes			0.04

No	4266 (62.2)	1072 (63.6)	
Without complication	1352 (19.7)	316 (18.7)	
With complication	1240 (18.1)	298 (17.7)	
Septicemia, Sepsis, Systemic Inflammatory Response Syndrome/Shock			<0.01
No	6567 (95.8)	1615 (95.8)	
Yes	291 (4.2)	71 (4.2)	
HIV/AIDS/Opportunistic Infections			0.01
No	6786 (99.0)	1667 (98.9)	
Yes	72 (1.0)	19 (1.1)	
Protein-Calorie Malnutrition			0.04
No	6683 (97.4)	1631 (96.7)	
Yes	175 (2.6)	55 (3.3)	
Morbid Obesity			0.04
No	6514 (95.0)	1615 (95.8)	
Yes	344 (5.0)	71 (4.2)	
Other Significant Endocrine and Metabolic Disorders			0.07
No	6300 (91.9)	1516 (89.9)	
Yes	558 (8.1)	170 (10.1)	
End-Stage Liver Disease			<0.01
No	6734 (98.2)	1656 (98.2)	
Yes	124 (1.8)	30 (1.8)	
GI diseases (Chronic Hepatitis, Chronic Pancreatitis, Inflammatory Bowel Disease)			0.09
No	6584 (96.0)	1644 (97.5)	
Yes	274 (4.0)	42 (2.5)	
Intestinal Obstruction/Perforation			0.01
No	6385 (93.1)	1567 (92.9)	
Yes	473 (6.9)	119 (7.1)	
Bone/Joint/Muscle Infections/Necrosis			0.01
No	6783 (98.9)	1669 (99.0)	
Yes	75 (1.1)	17 (1.0)	
Rheumatoid Arthritis and Inflammatory Connective Tissue Disease			0.06
No	6419 (93.6)	1553 (92.1)	
Yes	439 (6.4)	133 (7.9)	
Hematological Disorders			0.05
No	5949 (86.7)	1489 (88.3)	
Yes	909 (13.3)	197 (11.7)	
Disorders of Immunity			0.02
No	6560 (95.7)	1620 (96.1)	
Yes	298 (4.3)	66 (3.9)	
Drug/Alcohol Dependence			0.04
No	6702 (97.7)	1657 (98.3)	
Yes	156 (2.3)	29 (1.7)	
Major psychiatric disorder			0.01
No	6517 (95.0)	1604 (95.1)	
Yes	341 (5.0)	82 (4.9)	
Spinal Cord Injury/Paralytic disorders			<0.01
No	6759 (98.6)	1662 (98.6)	
Yes	99 (1.4)	24 (1.4)	
Neurological disorders affecting motor function			0.02
No	6651 (97.0)	1641 (97.3)	
Yes	207 (3.0)	45 (2.7)	
Other Neurologic disorders (Multiple Sclerosis, Seizure, Coma, Brain Anoxic Damage)			0.04
No	6652 (97.0)	1646 (97.6)	

Yes	206 (3.0)	40 (2.4)	
Cardio-respiratory failure			0.06
No	6560 (95.7)	1592 (94.4)	
Yes	298 (4.3)	94 (5.6)	
Congestive Heart Failure			0.01
No	5645 (82.3)	1391 (82.5)	
Yes	1213 (17.7)	295 (17.5)	
Acute Myocardial Infarction/Angina/Other Acute Ischemic Heart Disease			0.09
No	6297 (91.8)	1504 (89.2)	
Yes	561 (8.2)	182 (10.8)	
Specified Heart Arrhythmias			0.04
No	5456 (79.6)	1315 (78.0)	
Yes	1402 (20.4)	371 (22.0)	
Cerebrovascular insult			0.05
No	6357 (92.7)	1585 (94.0)	
Yes	501 (7.3)	101 (6.0)	
Severe peripheral vascular disease			0.01
No	6474 (94.4)	1587 (94.1)	
Yes	384 (5.6)	99 (5.9)	
Vascular Disease			0.03
No	5036 (73.4)	1212 (71.9)	
Yes	1822 (26.6)	474 (28.1)	
Cystic Fibrosis/Fibrosis of Lung and Other Chronic Lung Disorders			0.01
No	6606 (96.3)	1622 (96.2)	
Yes	252 (3.7)	64 (3.8)	
Chronic Obstructive Pulmonary Disease			0.16
No	4835 (70.5)	1061 (62.9)	
Yes	2023 (29.5)	625 (37.1)	
Pneumonia			0.02
No	6683 (97.4)	1638 (97.2)	
Yes	175 (2.6)	48 (2.8)	
Exudative Macular Degeneration			0.02
No	6691 (97.6)	1651 (97.9)	
Yes	167 (2.4)	35 (2.1)	
Acute Renal Failure			0.01
No	6296 (91.8)	1544 (91.6)	
Yes	562 (8.2)	142 (8.4)	
Chronic Kidney Disease			0.02
No	6672 (97.3)	1635 (97.0)	
Yes	186 (2.7)	51 (3.0)	
Skin Ulcer			0.02
No	6677 (97.4)	1635 (97.0)	
Yes	181 (2.6)	51 (3.0)	
Head Injury			0.05
No	6831 (99.6)	1673 (99.2)	
Yes	27 (0.4)	13 (0.8)	
Hip/Vertebral Fractures without Spinal Cord Injury			0.05
No	6696 (97.6)	1632 (96.8)	
Yes	162 (2.4)	54 (3.2)	
Limb Amputation			0.01
No	6792 (99.0)	1672 (99.2)	
Yes	66 (1.0)	14 (0.8)	
Complications of Specified Implanted Device or Graft			0.04

No	6613 (96.4)	1637 (97.1)	
Yes	245 (3.6)	49 (2.9)	
Artificial Openings for Feeding or Elimination			0.1
No	6570 (95.8)	1644 (97.5)	
Yes	288 (4.2)	42 (2.5)	

Abs. std. diff. = Absolute standardized difference.

C. Model specification for estimating difference-in-differences

For each outcome measure, we used a linear regression model to estimate the difference-in-differences (D-i-D). (ref 4) For binary outcome measures, this is also known as the linear probability model. The estimating equation has the form:

$$E(y_{iht}) = \beta_0 + \beta_1 Hospital_h + \beta_2 Year_t + \beta_3 Patient_factors_{iht} + \delta_0 \mathbf{1}[h \in MD, t = 2014] + \delta_{post} \mathbf{1}[h \in MD, t > 2014] + \varepsilon_{iht}$$

where y_{iht} is the outcome measure for patient i in hospital h and year t , $Hospital_h$ is a vector of hospital fixed effects, $Year_t$ is a vector of year fixed effects, $Patient_factors_{iht}$ is a vector of patient characteristics that were unbalanced between Maryland and the control group, $\mathbf{1}[h \in MD, t = 2014]$ is a dummy variable that is equal to 1 if the hospital is in Maryland and the year is 2014. This term is to remove the year of 2014 from the D-i-D estimation. $\mathbf{1}[h \in MD, t > 2014]$ is a dummy variable that is equal to 1 if the hospital is in Maryland and the year is after 2014. The parameter δ_{post} estimates the D-i-D in the outcome measure for Maryland hospitals from the pre-GBR period to the post period.

D. Counterfactual assumption

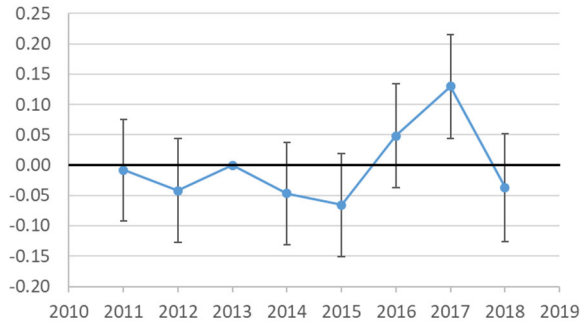
Before estimating the difference-in-difference (D-i-D) in the outcome measure, we used the following equation to examine if Maryland hospitals and their matched control hospitals had similar trends before 2014. The δ_k parameters estimate the difference between Maryland and control hospitals in the whole study period. Parameters δ_{-3} , δ_{-2} , and δ_{-1} are for the pre-GBR period and $\delta_1 - \delta_4$ are for the post-period. If the parameter estimates for the pre-period are close to zero, it means these two groups of hospitals have similar trends before 2014.

$$E(y_{iht}) = \beta_0 + \beta_1 Hospital_h + \beta_2 Year_t + \beta_3 Patient_factors_{iht} + \sum_{k=-3}^4 \delta_k \mathbf{1}[h \in MD, t = 2014 + k] + \varepsilon_{iht}$$

For each cohort and outcome, these δ_k estimates were plotted by year (eFigures 1 and 2).

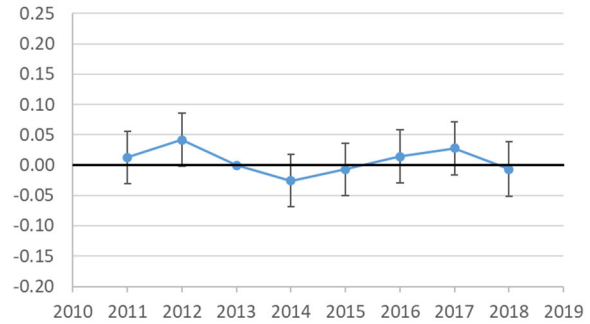
Part I. Main cohort (all inpatient and outpatient cancer surgical episodes from Maryland and matched control hospitals)

a. Total Medicare payment during episode



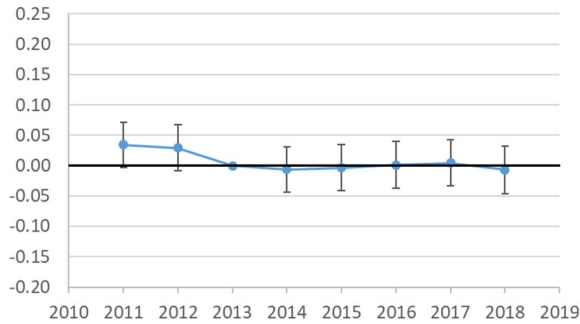
Likelihood ratio test for th pre-trend, $p=0.60$

b. Any ED visit in 30 days



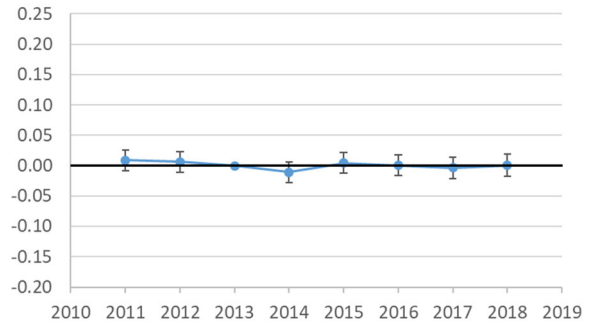
Likelihood ratio test for th pre-trend, $p=0.16$

c. Any readmission in 30 days



Likelihood ratio test for th pre-trend, $p=0.15$

d. Mortality in 30 days



Likelihood ratio test for th pre-trend, $p=0.57$

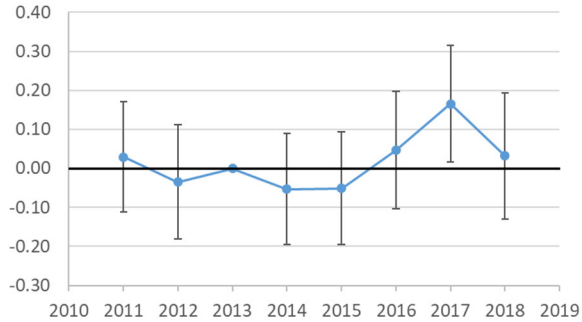
eFigure 1. Annual D-i-D estimates. The coefficient estimates in the figures measure how much the trend for Maryland hospitals depart from the trend for control hospitals before and after GBR implementation. If the estimates before 2014 are not significantly different from zero, it means Maryland hospitals and control hospitals share similar trends before GBR. The year of 2013 is the reference of comparison. The null hypothesis of the likelihood ratio test was that coefficients in the pre-period were all equal to zero.

Conclusion:

None of the estimates in the pre-period were significantly different from zero. That is, no significant violation of the counterfactual assumption was observed.

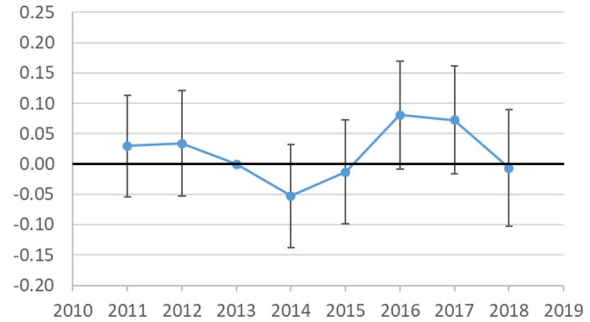
Part II. Inpatient major cancer surgery sub-cohort

a. Total Medicare payment during episode



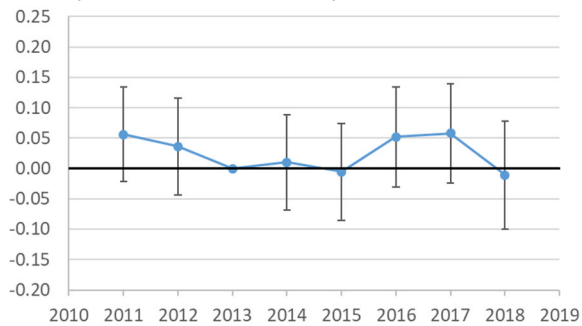
Likelihood ratio test for th pre-trend, $p=0.70$

b. Any ED visit in 30 days



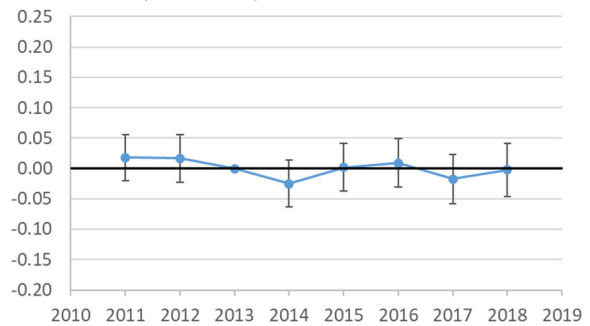
Likelihood ratio test for th pre-trend, $p=0.69$

c. Any readmission in 30 days



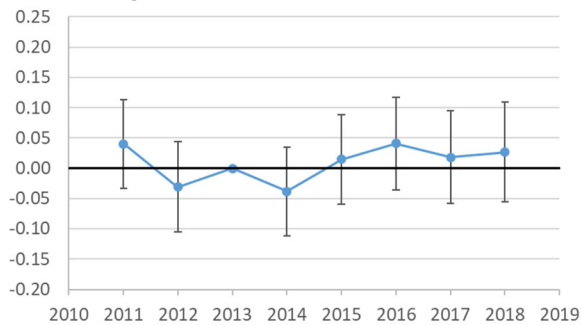
Likelihood ratio test for th pre-trend, $p=0.36$

d. Mortality in 30 days



Likelihood ratio test for th pre-trend, $p=0.59$

e. Discharged to SNF/IRF



Likelihood ratio test for th pre-trend, $p=0.17$

eFigure 2. Annual D-i-D estimates. The coefficient estimates in the figures measure how much the trend for Maryland hospitals depart from the trend for control hospitals before and after GBR implementation. If the estimates before 2014 are not significantly different from zero, it means Maryland hospitals and control hospitals share similar trends before GBR. The year of 2013 is the reference of comparison. The null hypothesis of the likelihood ratio test was that coefficients in the pre-period were all equal to zero.

Conclusion:

None of the estimates in the pre-period were significantly different from zero. That is, no significant violation of the counterfactual assumption was observed.

E. Surgery codes for identifying cancer surgeries

eTable 4. Surgery codes for identifying cancer surgeries

Cancer Type	Code Type	Code	Description	Major Surgery Type
Anal	ICD-9-CM	45.95	Anal anastomosis	
Anal	ICD-9-CM	48.42	Lap pull-thru res rectum	
Anal	ICD-9-CM	48.49	Pull-thru rect resec NEC	
Anal	ICD-9-CM	48.50	Abdominoperineal resection of the rectum, not otherwise	Colectomy
Anal	ICD-9-CM	48.51	Laparoscopic abdominoperineal resection of the rectum	Colectomy
Anal	ICD-9-CM	48.52	Open abdominoperineal resection of the rectum	Colectomy
Anal	ICD-9-CM	48.59	Other abdominoperineal resection of the rectum	Colectomy
Anal	ICD-9-CM	48.62	Anterior resection of rectum with synchronous colostomy	Colectomy
Anal	ICD-9-CM	48.63	Other anterior resection of rectum	Colectomy
Anal	ICD-9-CM	48.69	Other partial resection of rectum	Colectomy
Anal	ICD-9-CM	49.6	Excision of anus	
Anal	ICD-9-CM	57.71	Pelvic exenteration	Cystectomy
Anal	ICD-9-CM	68.8	Pelvic evisceration	
Anal	ICD-10-PCS	0D1B0ZQ	Bypass Ileum to Anus, Open Approach	
Anal	ICD-10-PCS	0D1B4ZQ	Bypass Ileum to Anus, Percutaneous Endoscopic Approach	
Anal	ICD-10-PCS	0D1B8ZQ	Bypass Ileum to Anus, Endo	
Anal	ICD-10-PCS	0DBP0ZZ	Excision of Rectum, Open Approach	
Anal	ICD-10-PCS	0DBP4ZZ	Excision of Rectum, Percutaneous Endoscopic Approach	
Anal	ICD-10-PCS	0DBQ0ZZ	Excision of Anus, Open Approach	
Anal	ICD-10-PCS	0DBQ3ZZ	Excision of Anus, Percutaneous Approach	
Anal	ICD-10-PCS	0DBQ4ZZ	Excision of Anus, Percutaneous Endoscopic Approach	
Anal	ICD-10-PCS	0DBQ7ZZ	Excision of Anus, Via Natural or Artificial Opening	
Anal	ICD-10-PCS	0DBQ8ZZ	Excision of Anus, Endo	
Anal	ICD-10-PCS	0DBQXZZ	Excision of Anus, External Approach	
Anal	ICD-10-PCS	0DBR0ZZ	Excision of Anal Sphincter, Open Approach	
Anal	ICD-10-PCS	0DBR3ZZ	Excision of Anal Sphincter, Percutaneous Approach	
Anal	ICD-10-PCS	0DBR4ZZ	Excision of Anal Sphincter, Percutaneous Endoscopic Approach	
Anal	ICD-10-PCS	0DTP0ZZ	Resection of Rectum, Open Approach	Colectomy
Anal	ICD-10-PCS	0DTP4ZZ	Resection of Rectum, Percutaneous Endoscopic Approach	Colectomy
Anal	ICD-10-PCS	0DTP7ZZ	Resection of Rectum, Via Natural or Artificial Opening	Colectomy
Anal	ICD-10-PCS	0DTP8ZZ	Resection of Rectum, Endo	Colectomy

Anal	ICD-10-PCS	0DTQ0ZZ	Resection of Anus, Open Approach	
Anal	ICD-10-PCS	0DTQ4ZZ	Resection of Anus, Percutaneous Endoscopic Approach	
Anal	ICD-10-PCS	0DTQ7ZZ	Resection of Anus, Via Natural or Artificial Opening	
Anal	ICD-10-PCS	0DTQ8ZZ	Resection of Anus, Endo	
Anal	ICD-10-PCS	0DTR0ZZ	Resection of Anal Sphincter, Open Approach	
Anal	ICD-10-PCS	0DTR4ZZ	Resection of Anal Sphincter, Perc Endo Approach	
Anal	ICD-10-PCS	0TTB0ZZ	Resection of Bladder, Open Approach	Cystectomy
Anal	ICD-10-PCS	0TTB4ZZ	Resection of Bladder, Percutaneous Endoscopic Approach	Cystectomy
Anal	ICD-10-PCS	0TTB7ZZ	Resection of Bladder, Via Natural or Artificial Opening	Cystectomy
Anal	ICD-10-PCS	0TTB8ZZ	Resection of Bladder, Endo	Cystectomy
Anal	ICD-10-PCS	0TTD0ZZ	Resection of Urethra, Open Approach	
Anal	ICD-10-PCS	0TTD4ZZ	Resection of Urethra, Percutaneous Endoscopic Approach	
Anal	ICD-10-PCS	0TTD7ZZ	Resection of Urethra, Via Natural or Artificial Opening	
Anal	ICD-10-PCS	0TTD8ZZ	Resection of Urethra, Endo	
Anal	ICD-10-PCS	0UT20ZZ	Resection of Bilateral Ovaries, Open Approach	
Anal	ICD-10-PCS	0UT70ZZ	Resection of Bilateral Fallopian Tubes, Open Approach	
Anal	ICD-10-PCS	0UT90ZZ	Resection of Uterus, Open Approach	
Anal	ICD-10-PCS	0UTC0ZZ	Resection of Cervix, Open Approach	
Anal	ICD-10-PCS	0UTG0ZZ	Resection of Vagina, Open Approach	
Anal	ICD-10-PCS	0VT00ZZ	Resection of Prostate, Open Approach	
Anal	ICD-10-PCS	0VT04ZZ	Resection of Prostate, Percutaneous Endoscopic Approach	
Anal	ICD-10-PCS	0VT07ZZ	Resection of Prostate, Via Natural or Artificial Opening	
Anal	ICD-10-PCS	0VT08ZZ	Resection of Prostate, Endo	
Anal	ICD-10-PCS	0VT30ZZ	Resection of Bilateral Seminal Vesicles, Open Approach	
Anal	ICD-10-PCS	0VT34ZZ	Resection of Bilateral Seminal Vesicles, Perc Endo Approach	
Bladder	ICD-9-CM	57.71	Pelvic exenteration	Cystectomy
Bladder	ICD-9-CM	57.79	Total cystectomy NEC	Cystectomy
Bladder	ICD-9-CM	57.87	Bladder reconstruction	
Bladder	ICD-9-CM	68.8	Pelvic evisceration	
Bladder	ICD-10-PCS	0TRB07Z	Replacement of Bladder with Autol Sub, Open Approach	
Bladder	ICD-10-PCS	0TRB0JZ	Replacement of Bladder with Synth Sub, Open Approach	
Bladder	ICD-10-PCS	0TRB0KZ	Replacement of Bladder with Nonaut Sub, Open Approach	

Bladder	ICD-10-PCS	0TRB47Z	Replacement of Bladder with Autol Sub, Perc Endo Approach	
Bladder	ICD-10-PCS	0TRB4JZ	Replacement of Bladder with Synth Sub, Perc Endo Approach	
Bladder	ICD-10-PCS	0TRB4KZ	Replacement of Bladder with Nonaut Sub, Perc Endo Approach	
Bladder	ICD-10-PCS	0TRB77Z	Replacement of Bladder with Autol Sub, Via Opening	
Bladder	ICD-10-PCS	0TRB7JZ	Replacement of Bladder with Synth Sub, Via Opening	
Bladder	ICD-10-PCS	0TRB7KZ	Replacement of Bladder with Nonaut Sub, Via Opening	
Bladder	ICD-10-PCS	0TRB87Z	Replacement of Bladder with Autol Sub, Endo	
Bladder	ICD-10-PCS	0TRB8JZ	Replacement of Bladder with Synthetic Substitute, Endo	
Bladder	ICD-10-PCS	0TRB8KZ	Replacement of Bladder with Nonaut Sub, Endo	
Bladder	ICD-10-PCS	0TTB0ZZ	Resection of Bladder, Open Approach	Cystectomy
Bladder	ICD-10-PCS	0TTB4ZZ	Resection of Bladder, Percutaneous Endoscopic Approach	Cystectomy
Bladder	ICD-10-PCS	0TTB7ZZ	Resection of Bladder, Via Natural or Artificial Opening	Cystectomy
Bladder	ICD-10-PCS	0TTB8ZZ	Resection of Bladder, Endo	Cystectomy
Bladder	ICD-10-PCS	0TTC0ZZ	Resection of Bladder Neck, Open Approach	Cystectomy
Bladder	ICD-10-PCS	0TTC4ZZ	Resection of Bladder Neck, Percutaneous Endoscopic Approach	Cystectomy
Bladder	ICD-10-PCS	0TTC7ZZ	Resection of Bladder Neck, Via Natural or Artificial Opening	Cystectomy
Bladder	ICD-10-PCS	0TTC8ZZ	Resection of Bladder Neck, Via Natural or Artificial Opening	Cystectomy
Bladder	ICD-10-PCS	0TTD0ZZ	Resection of Urethra, Open Approach	
Bladder	ICD-10-PCS	0TTD4ZZ	Resection of Urethra, Percutaneous Endoscopic Approach	
Bladder	ICD-10-PCS	0TTD7ZZ	Resection of Urethra, Via Natural or Artificial Opening	
Bladder	ICD-10-PCS	0TTD8ZZ	Resection of Urethra, Endo	
Bladder	ICD-10-PCS	0TUB07Z	Supplement Bladder with Autol Sub, Open Approach	
Bladder	ICD-10-PCS	0TUB0JZ	Supplement Bladder with Synthetic Substitute, Open Approach	
Bladder	ICD-10-PCS	0TUB0KZ	Supplement Bladder with Nonaut Sub, Open Approach	
Bladder	ICD-10-PCS	0TUB47Z	Supplement Bladder with Autol Sub, Perc Endo Approach	
Bladder	ICD-10-PCS	0TUB4JZ	Supplement Bladder with Synth Sub, Perc Endo Approach	
Bladder	ICD-10-PCS	0TUB4KZ	Supplement Bladder with Nonaut Sub, Perc Endo Approach	
Bladder	ICD-10-PCS	0TUB77Z	Supplement Bladder with Autol Sub, Via Opening	
Bladder	ICD-10-PCS	0TUB7JZ	Supplement Bladder with Synthetic Substitute, Via Opening	

Bladder	ICD-10-PCS	0TUB7KZ	Supplement Bladder with Nonaut Sub, Via Opening	
Bladder	ICD-10-PCS	0TUB87Z	Supplement Bladder with Autologous Tissue Substitute, Endo	
Bladder	ICD-10-PCS	0TUB8JZ	Supplement Bladder with Synthetic Substitute, Endo	
Bladder	ICD-10-PCS	0TUB8KZ	Supplement Bladder with Nonaut Sub, Endo	
Bladder	ICD-10-PCS	0UT20ZZ	Resection of Bilateral Ovaries, Open Approach	
Bladder	ICD-10-PCS	0UT70ZZ	Resection of Bilateral Fallopian Tubes, Open Approach	
Bladder	ICD-10-PCS	0UT90ZZ	Resection of Uterus, Open Approach	
Bladder	ICD-10-PCS	0UTC0ZZ	Resection of Cervix, Open Approach	
Bladder	ICD-10-PCS	0UTG0ZZ	Resection of Vagina, Open Approach	
Bladder	ICD-10-PCS	0VT00ZZ	Resection of Prostate, Open Approach	
Bladder	ICD-10-PCS	0VT04ZZ	Resection of Prostate, Percutaneous Endoscopic Approach	
Bladder	ICD-10-PCS	0VT07ZZ	Resection of Prostate, Via Natural or Artificial Opening	
Bladder	ICD-10-PCS	0VT08ZZ	Resection of Prostate, Endo	
Bladder	ICD-10-PCS	0VT30ZZ	Resection of Bilateral Seminal Vesicles, Open Approach	
Bladder	ICD-10-PCS	0VT34ZZ	Resection of Bilateral Seminal Vesicles, Perc Endo Approach	
Breast	ICD-9-CM	85.20	Local excision of lesion of breast	
Breast	ICD-9-CM	85.21	Local excision of lesion of breast	
Breast	ICD-9-CM	85.22	Resection of quadrant of breast	
Breast	ICD-9-CM	85.23	Subtotal mastectomy	
Breast	ICD-9-CM	85.41	Unilateral simple mastectomy	
Breast	ICD-9-CM	85.42	Bilateral simple mastectomy	
Breast	ICD-9-CM	85.43	Unilateral extended simple mastectomy	
Breast	ICD-9-CM	85.44	Bilateral extended simple mastectomy	
Breast	ICD-9-CM	85.45	Unilateral radical mastectomy	
Breast	ICD-9-CM	85.46	Bilateral radical mastectomy	
Breast	ICD-9-CM	85.47	Unilateral extended radical mastectomy	
Breast	ICD-9-CM	85.48	Bilateral extended radical mastectomy	
Breast	ICD-10-PCS	0H0T0JZ	Alteration of Right Breast with Synth Sub, Open Approach	
Breast	ICD-10-PCS	0H0T0KZ	Alteration of Right Breast with Nonaut Sub, Open Approach	
Breast	ICD-10-PCS	0H0T3JZ	Alteration of Right Breast with Synth Sub, Perc Approach	
Breast	ICD-10-PCS	0H0T3KZ	Alteration of Right Breast with Nonaut Sub, Perc Approach	
Breast	ICD-10-PCS	0H0U0JZ	Alteration of Left Breast with Synth Sub, Open Approach	
Breast	ICD-10-PCS	0H0U0KZ	Alteration of Left Breast with Nonaut Sub, Open Approach	

Breast	ICD-10-PCS	0H0U3JZ	Alteration of Left Breast with Synth Sub, Perc Approach	
Breast	ICD-10-PCS	0H0U3KZ	Alteration of Left Breast with Nonaut Sub, Perc Approach	
Breast	ICD-10-PCS	0H0V07Z	Alteration of Bilateral Breast with Autol Sub, Open Approach	
Breast	ICD-10-PCS	0H0V0JZ	Alteration of Bilateral Breast with Synth Sub, Open Approach	
Breast	ICD-10-PCS	0H0V0KZ	Alteration of Bi Breast with Nonaut Sub, Open Approach	
Breast	ICD-10-PCS	0H0V37Z	Alteration of Bilateral Breast with Autol Sub, Perc Approach	
Breast	ICD-10-PCS	0H0V3JZ	Alteration of Bilateral Breast with Synth Sub, Perc Approach	
Breast	ICD-10-PCS	0H0V3KZ	Alteration of Bi Breast with Nonaut Sub, Perc Approach	
Breast	ICD-10-PCS	0H5T0ZZ	Destruction of Right Breast, Open Approach	
Breast	ICD-10-PCS	0H5T3ZZ	Destruction of Right Breast, Percutaneous Approach	
Breast	ICD-10-PCS	0H5T7ZZ	Destruction of Right Breast, Via Opening	
Breast	ICD-10-PCS	0H5T8ZZ	Destruction of Right Breast, Endo	
Breast	ICD-10-PCS	0H5TXZZ	Destruction of Right Breast, External Approach	
Breast	ICD-10-PCS	0H5U0ZZ	Destruction of Left Breast, Open Approach	
Breast	ICD-10-PCS	0H5U3ZZ	Destruction of Left Breast, Percutaneous Approach	
Breast	ICD-10-PCS	0H5U7ZZ	Destruction of Left Breast, Via Opening	
Breast	ICD-10-PCS	0H5U8ZZ	Destruction of Left Breast, Endo	
Breast	ICD-10-PCS	0H5UXZZ	Destruction of Left Breast, External Approach	
Breast	ICD-10-PCS	0H5V0ZZ	Destruction of Bilateral Breast, Open Approach	
Breast	ICD-10-PCS	0H5V3ZZ	Destruction of Bilateral Breast, Percutaneous Approach	
Breast	ICD-10-PCS	0H5V7ZZ	Destruction of Bilateral Breast, Via Opening	
Breast	ICD-10-PCS	0H5V8ZZ	Destruction of Bilateral Breast, Endo	
Breast	ICD-10-PCS	0H5VXZZ	Destruction of Bilateral Breast, External Approach	
Breast	ICD-10-PCS	0HBT0ZZ	Excision of Right Breast, Open Approach	
Breast	ICD-10-PCS	0HBT3ZZ	Excision of Right Breast, Percutaneous Approach	
Breast	ICD-10-PCS	0HBT7ZZ	Excision of Right Breast, Via Natural or Artificial Opening	
Breast	ICD-10-PCS	0HBT8ZZ	Excision of Right Breast, Endo	
Breast	ICD-10-PCS	0HBTXZZ	Excision of Right Breast, External Approach	
Breast	ICD-10-PCS	0HBU0ZZ	Excision of Left Breast, Open Approach	
Breast	ICD-10-PCS	0HBU3ZZ	Excision of Left Breast, Percutaneous Approach	
Breast	ICD-10-PCS	0HBU7ZZ	Excision of Left Breast, Via Natural or Artificial Opening	
Breast	ICD-10-PCS	0HBU8ZZ	Excision of Left Breast, Endo	

Breast	ICD-10-PCS	0HBUXZZ	Excision of Left Breast, External Approach	
Breast	ICD-10-PCS	0HBV0ZZ	Excision of Bilateral Breast, Open Approach	
Breast	ICD-10-PCS	0HBV3ZZ	Excision of Bilateral Breast, Percutaneous Approach	
Breast	ICD-10-PCS	0HBV7ZZ	Excision of Bilateral Breast, Via Opening	
Breast	ICD-10-PCS	0HBV8ZZ	Excision of Bilateral Breast, Endo	
Breast	ICD-10-PCS	0HBVXZZ	Excision of Bilateral Breast, External Approach	
Breast	ICD-10-PCS	0HTT0ZZ	Resection of Right Breast, Open Approach	
Breast	ICD-10-PCS	0HTU0ZZ	Resection of Left Breast, Open Approach	
Breast	ICD-10-PCS	0HTV0ZZ	Resection of Bilateral Breast, Open Approach	
Breast	ICD-10-PCS	0HX5XZZ	Transfer Chest Skin, External Approach	
Breast	ICD-10-PCS	0KTH0ZZ	Resection of Right Thorax Muscle, Open Approach	
Breast	ICD-10-PCS	0KTJ0ZZ	Resection of Left Thorax Muscle, Open Approach	
Breast	CPT	19120	Removal of breast lesion	
Breast	CPT	19125	Excision breast lesion	
Breast	CPT	19126	Excision addl breast lesion	
Breast	CPT	19294	Prep of tumor cavity, placement radiation tx applicator for IORT concurr partial mastect	
Breast	CPT	19301	Partial mastectomy	
Breast	CPT	19302	Partial with axillary lymphadenectomy	
Breast	CPT	19303	Simple mastectomy	
Breast	CPT	19304	Subcutaneous mastectomy	
Breast	CPT	19305	Radical mastectomy	
Breast	CPT	19306	Radical mastectomy	
Breast	CPT	19307	Modified radical mastectomy	
Breast	CPT	28525	Lumpectomy with sentinel node biopsy	
Female GU	ICD-9-CM	65.49	Oth uni salpingo-oophor	
Female GU	ICD-9-CM	65.51	Oth remove both ovaries	
Female GU	ICD-9-CM	65.52	Oth remove remain ovary	
Female GU	ICD-9-CM	65.53	Lap remove both ovaries	
Female GU	ICD-9-CM	65.61	Oth remove ovaries/tubes	
Female GU	ICD-9-CM	65.62	Oth remove rem ova/tube	
Female GU	ICD-9-CM	68.31	Lap scervic hysterectomy	
Female GU	ICD-9-CM	68.39	Subtotl abd hyst NEC/NOS	
Female GU	ICD-9-CM	68.41	Lap total abdominal hyst	
Female GU	ICD-9-CM	68.49	Total abd hyst NEC/NOS	
Female GU	ICD-9-CM	68.51	Lap ast vag hysterectomy	
Female GU	ICD-9-CM	68.61	Lap radical abdomnl hyst	
Female GU	ICD-9-CM	68.69	Radical abd hyst NEC/NOS	
Female GU	ICD-9-CM	68.71	Lap radical vaginal hyst	
Female GU	ICD-9-CM	68.79	Radical vag hyst NEC/NOS	
Female GU	ICD-9-CM	68.8	Pelvic evisceration	
Female GU	ICD-9-CM	68.9	Hysterectomy NEC/NOS	
Female GU	ICD-10-PCS	0TTB0ZZ	Resection of Bladder, Open Approach	Cystectomy
Female GU	ICD-10-PCS	0TTD0ZZ	Resection of Urethra, Open Approach	

Female GU	ICD-10-PCS	0U508ZZ	Destruction of Right Ovary, Via Natural or Artificial Opening Endoscopic	
Female GU	ICD-10-PCS	0U518ZZ	Destruction of Left Ovary, Via Natural or Artificial Opening Endoscopic	
Female GU	ICD-10-PCS	0U528ZZ	Destruction of Bilateral Ovaries, Via Natural or Artificial Opening Endoscopic	
Female GU	ICD-10-PCS	0U548ZZ	Destruction of Uterine Supporting Structure, Via Natural or Artificial Opening Endoscopic	
Female GU	ICD-10-PCS	0UT00ZZ	Resection of Right Ovary, Open Approach	
Female GU	ICD-10-PCS	0UT07ZZ	Resection of Right Ovary, Via Natural or Artificial Opening	
Female GU	ICD-10-PCS	0UT08ZZ	Resection of Right Ovary, Endo	
Female GU	ICD-10-PCS	0UT0FZZ	Resection of Right Ovary, Via Opening w Perc Endo	
Female GU	ICD-10-PCS	0UT10ZZ	Resection of Left Ovary, Open Approach	
Female GU	ICD-10-PCS	0UT17ZZ	Resection of Left Ovary, Via Natural or Artificial Opening	
Female GU	ICD-10-PCS	0UT18ZZ	Resection of Left Ovary, Endo	
Female GU	ICD-10-PCS	0UT1FZZ	Resection of Left Ovary, Via Opening w Perc Endo	
Female GU	ICD-10-PCS	0UT20ZZ	Resection of Bilateral Ovaries, Open Approach	
Female GU	ICD-10-PCS	0UT24ZZ	Resection of Bilateral Ovaries, Perc Endo Approach	
Female GU	ICD-10-PCS	0UT27ZZ	Resection of Bilateral Ovaries, Via Opening	
Female GU	ICD-10-PCS	0UT28ZZ	Resection of Bilateral Ovaries, Endo	
Female GU	ICD-10-PCS	0UT2FZZ	Resection of Bilateral Ovaries, Via Opening w Perc Endo	
Female GU	ICD-10-PCS	0UT40ZZ	Resection of Uterine Supporting Structure, Open Approach	
Female GU	ICD-10-PCS	0UT44ZZ	Resection of Uterine Support Struct, Perc Endo Approach	
Female GU	ICD-10-PCS	0UT70ZZ	Resection of Bilateral Fallopian Tubes, Open Approach	
Female GU	ICD-10-PCS	0UT90ZL	Resection of Uterus, Supracervical, Open Approach	
Female GU	ICD-10-PCS	0UT90ZZ	Resection of Uterus, Open Approach	
Female GU	ICD-10-PCS	0UT94ZL	Resection of Uterus, Supracervical, Percutaneous Endoscopic Approach	
Female GU	ICD-10-PCS	0UT94ZZ	Resection of Uterus, Percutaneous Endoscopic Approach	
Female GU	ICD-10-PCS	0UT97ZL	Resection of Uterus, Supracervical, Via Natural or Artificial Opening	
Female GU	ICD-10-PCS	0UT97ZZ	Resection of Uterus, Via Natural or Artificial Opening	
Female GU	ICD-10-PCS	0UT98ZL	Resection of Uterus, Supracervical, Via Natural or Artificial Opening Endoscopic	
Female GU	ICD-10-PCS	0UT98ZZ	Resection of Uterus, Endo	

Female GU	ICD-10-PCS	0UT9FZL	Resection of Uterus, Supracervical, Via Natural or Artificial Opening With Percutaneous Endoscopic Assistance	
Female GU	ICD-10-PCS	0UT9FZZ	Resection of Uterus, Via Opening w Perc Endo	
Female GU	ICD-10-PCS	0UTC0ZZ	Resection of Cervix, Open Approach	
Female GU	ICD-10-PCS	0UTC4ZZ	Resection of Cervix, Percutaneous Endoscopic Approach	
Female GU	ICD-10-PCS	0UTC7ZZ	Resection of Cervix, Via Natural or Artificial Opening	
Female GU	ICD-10-PCS	0UTC8ZZ	Resection of Cervix, Endo	
Female GU	ICD-10-PCS	0UTG0ZZ	Resection of Vagina, Open Approach	
Female GU	CPT	58548	Lap radical hyst	
Female GU	CPT	58550	Laparo-asst vag hysterectomy	
Female GU	CPT	58552	Laparo-vag hyst incl t/o	
Female GU	CPT	58950	Resect ovarian malignancy	
Female GU	CPT	58953	Tah rad dissect for debulk	
Gastro/Esophageal	ICD-9-CM	42.40	Esophagectomy, not otherwise specified	Esophagectomy
Gastro/Esophageal	ICD-9-CM	42.41	Partial esophagectomy	Esophagectomy
Gastro/Esophageal	ICD-9-CM	42.42	Total esophagectomy	Esophagectomy
Gastro/Esophageal	ICD-9-CM	42.51	Intrathoracic anastomosis of esophagus	
Gastro/Esophageal	ICD-9-CM	42.52	Intrathoracic anastomosis of esophagus	
Gastro/Esophageal	ICD-9-CM	42.53	Intrathoracic anastomosis of esophagus	
Gastro/Esophageal	ICD-9-CM	42.54	Intrathoracic anastomosis of esophagus	
Gastro/Esophageal	ICD-9-CM	42.55	Intrathoracic anastomosis of esophagus	
Gastro/Esophageal	ICD-9-CM	42.56	Intrathoracic anastomosis of esophagus	
Gastro/Esophageal	ICD-9-CM	42.58	Intrathoracic anastomosis of esophagus	
Gastro/Esophageal	ICD-9-CM	42.59	Intrathoracic anastomosis of esophagus	
Gastro/Esophageal	ICD-9-CM	42.61	Antesternal anastomosis of esophagus	
Gastro/Esophageal	ICD-9-CM	42.62	Antesternal anastomosis of esophagus	
Gastro/Esophageal	ICD-9-CM	42.63	Antesternal anastomosis of esophagus	
Gastro/Esophageal	ICD-9-CM	42.64	Antesternal anastomosis of esophagus	
Gastro/Esophageal	ICD-9-CM	42.65	Antesternal anastomosis of esophagus	
Gastro/Esophageal	ICD-9-CM	42.69	Antesternal anastomosis of esophagus	
Gastro/Esophageal	ICD-9-CM	43.42	Local excision of other lesion or tissue of stomach	
Gastro/Esophageal	ICD-9-CM	43.5	Partial gastrectomy with anastomosis to esophagus	Gastrectomy
Gastro/Esophageal	ICD-9-CM	43.6	Partial gastrectomy with anastomosis to duodenum	Gastrectomy

Gastro/Esophageal	ICD-9-CM	43.7	Partial gastrectomy with anastomosis to jejunum	Gastrectomy
Gastro/Esophageal	ICD-9-CM	43.81	Partial gastrectomy with jejunal transposition	Gastrectomy
Gastro/Esophageal	ICD-9-CM	43.82	Laparoscopic vertical (sleeve) gastrectomy	
Gastro/Esophageal	ICD-9-CM	43.89	Open and other partial gastrectomy	Gastrectomy
Gastro/Esophageal	ICD-9-CM	43.91	Total gastrectomy with intestinal interposition	Gastrectomy
Gastro/Esophageal	ICD-9-CM	43.99	Other total gastrectomy	Gastrectomy
Gastro/Esophageal	ICD-9-CM	46.39	Enterostomy NEC	
Gastro/Esophageal	ICD-10-PCS	0D15074	Bypass Esophagus to Cutaneous with Autol Sub, Open Approach	
Gastro/Esophageal	ICD-10-PCS	0D15076	Bypass Esophagus to Stomach with Autol Sub, Open Approach	
Gastro/Esophageal	ICD-10-PCS	0D15079	Bypass Esophagus to Duodenum with Autol Sub, Open Approach	
Gastro/Esophageal	ICD-10-PCS	0D1507A	Bypass Esophagus to Jejunum with Autol Sub, Open Approach	
Gastro/Esophageal	ICD-10-PCS	0D1507B	Bypass Esophagus to Ileum with Autol Sub, Open Approach	
Gastro/Esophageal	ICD-10-PCS	0D150J4	Bypass Esophagus to Cutaneous with Synth Sub, Open Approach	
Gastro/Esophageal	ICD-10-PCS	0D150J6	Bypass Esophagus to Stomach with Synth Sub, Open Approach	
Gastro/Esophageal	ICD-10-PCS	0D150J9	Bypass Esophagus to Duodenum with Synth Sub, Open Approach	
Gastro/Esophageal	ICD-10-PCS	0D150JA	Bypass Esophagus to Jejunum with Synth Sub, Open Approach	
Gastro/Esophageal	ICD-10-PCS	0D150JB	Bypass Esophagus to Ileum with Synth Sub, Open Approach	
Gastro/Esophageal	ICD-10-PCS	0D150K4	Bypass Esophagus to Cutaneous with Nonaut Sub, Open Approach	
Gastro/Esophageal	ICD-10-PCS	0D150K6	Bypass Esophagus to Stomach with Nonaut Sub, Open Approach	
Gastro/Esophageal	ICD-10-PCS	0D150K9	Bypass Esophagus to Duodenum with Nonaut Sub, Open Approach	
Gastro/Esophageal	ICD-10-PCS	0D150KA	Bypass Esophagus to Jejunum with Nonaut Sub, Open Approach	
Gastro/Esophageal	ICD-10-PCS	0D150KB	Bypass Esophagus to Ileum with Nonaut Sub, Open Approach	
Gastro/Esophageal	ICD-10-PCS	0D150Z4	Bypass Esophagus to Cutaneous, Open Approach	
Gastro/Esophageal	ICD-10-PCS	0D150Z6	Bypass Esophagus to Stomach, Open Approach	
Gastro/Esophageal	ICD-10-PCS	0D150Z9	Bypass Esophagus to Duodenum, Open Approach	
Gastro/Esophageal	ICD-10-PCS	0D150ZA	Bypass Esophagus to Jejunum, Open Approach	
Gastro/Esophageal	ICD-10-PCS	0D150ZB	Bypass Esophagus to Ileum, Open Approach	
Gastro/Esophageal	ICD-10-PCS	0D153J4	Bypass Esophagus to Cutaneous with Synth Sub, Perc Approach	
Gastro/Esophageal	ICD-10-PCS	0D15474	Bypass Esophagus to Cutan with Autol Sub, Perc Endo Approach	
Gastro/Esophageal	ICD-10-PCS	0D15476	Bypass Esophag to Stomach with Autol Sub, Perc Endo Approach	
Gastro/Esophageal	ICD-10-PCS	0D15479	Bypass Esophag to Duoden with Autol Sub, Perc Endo Approach	

Gastro/Esophageal	ICD-10-PCS	0D1547A	Bypass Esophag to Jejunum with Autol Sub, Perc Endo Approach	
Gastro/Esophageal	ICD-10-PCS	0D1547B	Bypass Esophagus to Ileum with Autol Sub, Perc Endo Approach	
Gastro/Esophageal	ICD-10-PCS	0D154J4	Bypass Esophagus to Cutan with Synth Sub, Perc Endo Approach	
Gastro/Esophageal	ICD-10-PCS	0D154J6	Bypass Esophag to Stomach with Synth Sub, Perc Endo Approach	
Gastro/Esophageal	ICD-10-PCS	0D154J9	Bypass Esophag to Duoden with Synth Sub, Perc Endo Approach	
Gastro/Esophageal	ICD-10-PCS	0D154JA	Bypass Esophag to Jejunum with Synth Sub, Perc Endo Approach	
Gastro/Esophageal	ICD-10-PCS	0D154JB	Bypass Esophagus to Ileum with Synth Sub, Perc Endo Approach	
Gastro/Esophageal	ICD-10-PCS	0D154K4	Bypass Esophag to Cutan with Nonaut Sub, Perc Endo Approach	
Gastro/Esophageal	ICD-10-PCS	0D154K6	Bypass Esophag to Stomach w Nonaut Sub, Perc Endo	
Gastro/Esophageal	ICD-10-PCS	0D154K9	Bypass Esophag to Duoden with Nonaut Sub, Perc Endo Approach	
Gastro/Esophageal	ICD-10-PCS	0D154KA	Bypass Esophag to Jejunum w Nonaut Sub, Perc Endo	
Gastro/Esophageal	ICD-10-PCS	0D154KB	Bypass Esophag to Ileum with Nonaut Sub, Perc Endo Approach	
Gastro/Esophageal	ICD-10-PCS	0D154Z4	Bypass Esophagus to Cutaneous, Perc Endo Approach	
Gastro/Esophageal	ICD-10-PCS	0D154Z6	Bypass Esophagus to Stomach, Perc Endo Approach	
Gastro/Esophageal	ICD-10-PCS	0D154Z9	Bypass Esophagus to Duodenum, Perc Endo Approach	
Gastro/Esophageal	ICD-10-PCS	0D154ZA	Bypass Esophagus to Jejunum, Perc Endo Approach	
Gastro/Esophageal	ICD-10-PCS	0D154ZB	Bypass Esophagus to Ileum, Percutaneous Endoscopic Approach	
Gastro/Esophageal	ICD-10-PCS	0D15876	Bypass Esophagus to Stomach with Autol Sub, Endo	
Gastro/Esophageal	ICD-10-PCS	0D15879	Bypass Esophagus to Duodenum with Autol Sub, Endo	
Gastro/Esophageal	ICD-10-PCS	0D1587A	Bypass Esophagus to Jejunum with Autol Sub, Endo	
Gastro/Esophageal	ICD-10-PCS	0D1587B	Bypass Esophagus to Ileum with Autol Sub, Endo	
Gastro/Esophageal	ICD-10-PCS	0D158J6	Bypass Esophagus to Stomach with Synthetic Substitute, Endo	
Gastro/Esophageal	ICD-10-PCS	0D158J9	Bypass Esophagus to Duodenum with Synthetic Substitute, Endo	
Gastro/Esophageal	ICD-10-PCS	0D158JA	Bypass Esophagus to Jejunum with Synthetic Substitute, Endo	
Gastro/Esophageal	ICD-10-PCS	0D158JB	Bypass Esophagus to Ileum with Synthetic Substitute, Endo	
Gastro/Esophageal	ICD-10-PCS	0D158K6	Bypass Esophagus to Stomach with Nonaut Sub, Endo	
Gastro/Esophageal	ICD-10-PCS	0D158K9	Bypass Esophagus to Duodenum with Nonaut Sub, Endo	
Gastro/Esophageal	ICD-10-PCS	0D158KA	Bypass Esophagus to Jejunum with Nonaut Sub, Endo	
Gastro/Esophageal	ICD-10-PCS	0D158KB	Bypass Esophagus to Ileum with Nonaut Sub, Endo	
Gastro/Esophageal	ICD-10-PCS	0D158Z6	Bypass Esophagus to Stomach, Endo	

Gastro/Esoophageal	ICD-10-PCS	0D158Z9	Bypass Esophagus to Duodenum, Endo	
Gastro/Esoophageal	ICD-10-PCS	0D158ZA	Bypass Esophagus to Jejunum, Endo	
Gastro/Esoophageal	ICD-10-PCS	0D158ZB	Bypass Esophagus to Ileum, Endo	
Gastro/Esoophageal	ICD-10-PCS	0DB40ZZ	Excision of Esophagogastric Junction, Open Approach	Gastrectomy
Gastro/Esoophageal	ICD-10-PCS	0DB43ZZ	Excision of Esophagogastric Junction, Percutaneous Approach	Gastrectomy
Gastro/Esoophageal	ICD-10-PCS	0DB44ZZ	Excision of Esophagogastric Junction, Percutaneous Endoscopic Approach	Gastrectomy
Gastro/Esoophageal	ICD-10-PCS	0DB47ZZ	Excision of Esophagogastric Junction, Via Natural or Artificial Opening	Gastrectomy
Gastro/Esoophageal	ICD-10-PCS	0DB50ZZ	Excision of Esophagus, Open Approach	Esophagectomy
Gastro/Esoophageal	ICD-10-PCS	0DB53ZZ	Excision of Esophagus, Percutaneous Approach	Esophagectomy
Gastro/Esoophageal	ICD-10-PCS	0DB57ZZ	Excision of Esophagus, Via Natural or Artificial Opening	Esophagectomy
Gastro/Esoophageal	ICD-10-PCS	0DB60ZZ	Excision of Stomach, Open Approach	Gastrectomy
Gastro/Esoophageal	ICD-10-PCS	0DB63ZZ	Excision of Stomach, Percutaneous Approach	Gastrectomy
Gastro/Esoophageal	ICD-10-PCS	0DB64Z3	Excision of Stomach, Percutaneous Endoscopic Approach, Vert	Gastrectomy
Gastro/Esoophageal	ICD-10-PCS	0DB64ZZ	Excision of Stomach, Percutaneous Endoscopic Approach	Gastrectomy
Gastro/Esoophageal	ICD-10-PCS	0DB67ZZ	Excision of Stomach, Via Natural or Artificial Opening	Gastrectomy
Gastro/Esoophageal	ICD-10-PCS	0DB68ZZ	Excision of Stomach, Endo	Gastrectomy
Gastro/Esoophageal	ICD-10-PCS	0DH80UZ	Insertion of Feeding Device into Small Intest, Open Approach	
Gastro/Esoophageal	ICD-10-PCS	0DH83UZ	Insertion of Feeding Device into Small Intest, Perc Approach	
Gastro/Esoophageal	ICD-10-PCS	0DH84UZ	Insert of Feeding Dev into Small Intest, Perc Endo Approach	
Gastro/Esoophageal	ICD-10-PCS	0DH87UZ	Insertion of Feeding Device into Small Intest, Via Opening	
Gastro/Esoophageal	ICD-10-PCS	0DH88UZ	Insertion of Feeding Device into Small Intest, Endo	
Gastro/Esoophageal	ICD-10-PCS	0DH90UZ	Insertion of Feeding Device into Duodenum, Open Approach	
Gastro/Esoophageal	ICD-10-PCS	0DH93UZ	Insertion of Feeding Device into Duodenum, Perc Approach	
Gastro/Esoophageal	ICD-10-PCS	0DH94UZ	Insertion of Feeding Dev into Duodenum, Perc Endo Approach	
Gastro/Esoophageal	ICD-10-PCS	0DH97UZ	Insertion of Feeding Device into Duodenum, Via Opening	
Gastro/Esoophageal	ICD-10-PCS	0DH98UZ	Insertion of Feeding Device into Duodenum, Endo	
Gastro/Esoophageal	ICD-10-PCS	0DHA0UZ	Insertion of Feeding Device into Jejunum, Open Approach	
Gastro/Esoophageal	ICD-10-PCS	0DHA7UZ	Insertion of Feeding Device into Jejunum, Via Opening	
Gastro/Esoophageal	ICD-10-PCS	0DT10ZZ	Resection of Upper Esophagus, Open Approach	Esophagectomy

Gastro/Esophageal	ICD-10-PCS	0DT14ZZ	Resection of Upper Esophagus, Percutaneous Endoscopic	Esophagectomy
Gastro/Esophageal	ICD-10-PCS	0DT17ZZ	Resection of Upper Esophagus, Via Natural or Artificial Opening	Esophagectomy
Gastro/Esophageal	ICD-10-PCS	0DT18ZZ	Resection of Upper Esophagus, Via Natural or Artificial Opening Endoscopic	Esophagectomy
Gastro/Esophageal	ICD-10-PCS	0DT20ZZ	Resection of Middle Esophagus, Open Approach	Esophagectomy
Gastro/Esophageal	ICD-10-PCS	0DT24ZZ	Resection of Middle Esophagus, Percutaneous Endoscopic	Esophagectomy
Gastro/Esophageal	ICD-10-PCS	0DT27ZZ	Resection of Middle Esophagus, Via Natural or Artificial Opening	Esophagectomy
Gastro/Esophageal	ICD-10-PCS	0DT28ZZ	Resection of Middle Esophagus, Via Natural or Artificial Opening Endoscopic	Esophagectomy
Gastro/Esophageal	ICD-10-PCS	0DT30ZZ	Resection of Lower Esophagus, Open Approach	Esophagectomy
Gastro/Esophageal	ICD-10-PCS	0DT34ZZ	Resection of Lower Esophagus, Percutaneous Endoscopic	Esophagectomy
Gastro/Esophageal	ICD-10-PCS	0DT37ZZ	Resection of Lower Esophagus, Via Natural or Artificial Opening	Esophagectomy
Gastro/Esophageal	ICD-10-PCS	0DT38ZZ	Resection of Lower Esophagus, Via Natural or Artificial Opening Endoscopic	Esophagectomy
Gastro/Esophageal	ICD-10-PCS	0DT40ZZ	Resection of Esophagogastric Junction, Open Approach	Gastrectomy
Gastro/Esophageal	ICD-10-PCS	0DT44ZZ	Resection of Esophagogastric Junction, Percutaneous Endoscopic Approach	Gastrectomy
Gastro/Esophageal	ICD-10-PCS	0DT47ZZ	Resection of Esophagogastric Junction, Via Natural or Artificial Opening	Gastrectomy
Gastro/Esophageal	ICD-10-PCS	0DT48ZZ	Resection of Esophagogastric Junction, Via Natural or Artificial Opening Endoscopic	Gastrectomy
Gastro/Esophageal	ICD-10-PCS	0DT50ZZ	Resection of Esophagus, Open Approach	Esophagectomy
Gastro/Esophageal	ICD-10-PCS	0DT54ZZ	Resection of Esophagus, Percutaneous Endoscopic Approach	Esophagectomy
Gastro/Esophageal	ICD-10-PCS	0DT57ZZ	Resection of Esophagus, Via Natural or Artificial Opening	Esophagectomy
Gastro/Esophageal	ICD-10-PCS	0DT58ZZ	Resection of Esophagus, Endo	Esophagectomy
Gastro/Esophageal	ICD-10-PCS	0DT60ZZ	Resection of Stomach, Open Approach	Gastrectomy
Gastro/Esophageal	ICD-10-PCS	0DT64ZZ	Resection of Stomach, Percutaneous Endoscopic Approach	Gastrectomy
Gastro/Esophageal	ICD-10-PCS	0DT67ZZ	Resection of Stomach, Via Natural or Artificial Opening	Gastrectomy
Gastro/Esophageal	ICD-10-PCS	0DT68ZZ	Resection of Stomach, Endo	Gastrectomy
Gastro/Esophageal	ICD-10-PCS	0DT70ZZ	Resection of Stomach, Pylorus, Open Approach	Gastrectomy
Gastro/Esophageal	ICD-10-PCS	0DT74ZZ	Resection of Stomach, Pylorus, Percutaneous Endoscopic Approach	Gastrectomy
Gastro/Esophageal	ICD-10-PCS	0DT77ZZ	Resection of Stomach, Pylorus, Via Natural or Artificial Opening	Gastrectomy

Gastro/Esophageal	ICD-10-PCS	0DT78ZZ	Resection of Stomach, Pylorus, Via Natural or Artificial Opening Endoscopic	Gastrectomy
Gastro/Esophageal	ICD-10-PCS	0DX60Z5	Transfer Stomach to Esophagus, Open Approach	
Gastro/Esophageal	ICD-10-PCS	0DX64Z5	Transfer Stomach to Esophagus, Perc Endo Approach	
Gastro/Esophageal	ICD-10-PCS	0DX80Z5	Transfer Small Intestine to Esophagus, Open Approach	
Gastro/Esophageal	ICD-10-PCS	0DX84Z5	Transfer Small Intestine to Esophagus, Perc Endo Approach	
Gastro/Esophageal	ICD-10-PCS	0DXE0Z5	Transfer Large Intestine to Esophagus, Open Approach	
Gastro/Esophageal	ICD-10-PCS	0DXE4Z5	Transfer Large Intestine to Esophagus, Perc Endo Approach	
Gastro/Esophageal	CPT	43122	Partial esophagectomy, thoracoabdominal or abdominal approach, with or without proximal gastrectomy; with esophagogastrostomy, with or without pyloroplasty	
Gastro/Esophageal	CPT	43276	Ercp stent exchange w/dilate	
Gastro/Esophageal	CPT	43277	Ercp ea duct/ampulla dilate	
Head and Neck	ICD-9-CM	21.4	Resection of nose	
Head and Neck	ICD-9-CM	21.5	Submuc nasal sept resect	
Head and Neck	ICD-9-CM	21.69	Turbinectomy NEC	
Head and Neck	ICD-9-CM	25.2	Partial glossectomy	
Head and Neck	ICD-9-CM	25.3	Complete glossectomy	
Head and Neck	ICD-9-CM	25.4	Radical glossectomy	
Head and Neck	ICD-9-CM	27.42	Wide excision of lip les	
Head and Neck	ICD-9-CM	27.57	Pedicle attach to mouth	
Head and Neck	ICD-9-CM	29.33	Pharyngectomy	
Head and Neck	ICD-9-CM	30.1	Hemilaryngectomy	
Head and Neck	ICD-9-CM	30.21	Epiglottidectomy	
Head and Neck	ICD-9-CM	30.22	Vocal cordectomy	
Head and Neck	ICD-9-CM	30.29	Other part laryngectomy	
Head and Neck	ICD-9-CM	30.3	Complete laryngectomy	
Head and Neck	ICD-9-CM	30.4	Radical laryngectomy	
Head and Neck	ICD-9-CM	40.40	Rad neck dissection NOS	
Head and Neck	ICD-9-CM	40.42	Bilat rad neck dissect	
Head and Neck	ICD-9-CM	76.31	Partial mandibulectomy	
Head and Neck	ICD-9-CM	76.43	Mandibular reconst NEC	
Head and Neck	ICD-9-CM	76.45	Tot face bone osect NEC	
Head and Neck	ICD-10-PCS	07T10ZZ	Resection of Right Neck Lymphatic, Open Approach	
Head and Neck	ICD-10-PCS	07T14ZZ	Resection of Right Neck Lymphatic, Perc Endo Approach	
Head and Neck	ICD-10-PCS	07T20ZZ	Resection of Left Neck Lymphatic, Open Approach	
Head and Neck	ICD-10-PCS	07T24ZZ	Resection of Left Neck Lymphatic, Perc Endo Approach	
Head and Neck	ICD-10-PCS	09BL0ZZ	Excision of Nasal Turbinate, Open Approach	
Head and Neck	ICD-10-PCS	09BL3ZZ	Excision of Nasal Turbinate, Percutaneous Approach	
Head and Neck	ICD-10-PCS	09BL4ZZ	Excision of Nasal Turbinate, Perc Endo Approach	
Head and Neck	ICD-10-PCS	09BL7ZZ	Excision of Nasal Turbinate, Via Opening	
Head and Neck	ICD-10-PCS	09BL8ZZ	Excision of Nasal Turbinate, Endo	

Head and Neck	ICD-10-PCS	09BM0ZZ	Excision of Nasal Septum, Open Approach	
Head and Neck	ICD-10-PCS	09BM3ZZ	Excision of Nasal Septum, Percutaneous Approach	
Head and Neck	ICD-10-PCS	09BM4ZZ	Excision of Nasal Septum, Percutaneous Endoscopic Approach	
Head and Neck	ICD-10-PCS	09BN0ZZ	Excision of Nasopharynx, Open Approach	
Head and Neck	ICD-10-PCS	09BN3ZZ	Excision of Nasopharynx, Percutaneous Approach	
Head and Neck	ICD-10-PCS	09BN4ZZ	Excision of Nasopharynx, Percutaneous Endoscopic Approach	
Head and Neck	ICD-10-PCS	09BN7ZZ	Excision of Nasopharynx, Via Natural or Artificial Opening	
Head and Neck	ICD-10-PCS	09BN8ZZ	Excision of Nasopharynx, Endo	
Head and Neck	ICD-10-PCS	09TK0ZZ	Resection of Nose, Open Approach	
Head and Neck	ICD-10-PCS	09TK4ZZ	Resection of Nose, Percutaneous Endoscopic Approach	
Head and Neck	ICD-10-PCS	09TKXZZ	Resection of Nose, External Approach	
Head and Neck	ICD-10-PCS	09TL0ZZ	Resection of Nasal Turbinate, Open Approach	
Head and Neck	ICD-10-PCS	09TL4ZZ	Resection of Nasal Turbinate, Perc Endo Approach	
Head and Neck	ICD-10-PCS	09TL7ZZ	Resection of Nasal Turbinate, Via Opening	
Head and Neck	ICD-10-PCS	09TL8ZZ	Resection of Nasal Turbinate, Endo	
Head and Neck	ICD-10-PCS	09TM0ZZ	Resection of Nasal Septum, Open Approach	
Head and Neck	ICD-10-PCS	09TM4ZZ	Resection of Nasal Septum, Percutaneous Endoscopic Approach	
Head and Neck	ICD-10-PCS	09TN0ZZ	Resection of Nasopharynx, Open Approach	
Head and Neck	ICD-10-PCS	09TN4ZZ	Resection of Nasopharynx, Percutaneous Endoscopic Approach	
Head and Neck	ICD-10-PCS	09TN7ZZ	Resection of Nasopharynx, Via Natural or Artificial Opening	
Head and Neck	ICD-10-PCS	09TN8ZZ	Resection of Nasopharynx, Endo	
Head and Neck	ICD-10-PCS	0C5R0ZZ	Destruction of Epiglottis, Open Approach	
Head and Neck	ICD-10-PCS	0C5R3ZZ	Destruction of Epiglottis, Percutaneous Approach	
Head and Neck	ICD-10-PCS	0C5R4ZZ	Destruction of Epiglottis, Percutaneous Endoscopic Approach	
Head and Neck	ICD-10-PCS	0C5R7ZZ	Destruction of Epiglottis, Via Natural or Artificial Opening	
Head and Neck	ICD-10-PCS	0C5R8ZZ	Destruction of Epiglottis, Endo	
Head and Neck	ICD-10-PCS	0CB00ZZ	Excision of Upper Lip, Open Approach	
Head and Neck	ICD-10-PCS	0CB03ZZ	Excision of Upper Lip, Percutaneous Approach	
Head and Neck	ICD-10-PCS	0CB0XZZ	Excision of Upper Lip, External Approach	

Head and Neck	ICD-10-PCS	0CB10ZZ	Excision of Lower Lip, Open Approach	
Head and Neck	ICD-10-PCS	0CB13ZZ	Excision of Lower Lip, Percutaneous Approach	
Head and Neck	ICD-10-PCS	0CB1XZZ	Excision of Lower Lip, External Approach	
Head and Neck	ICD-10-PCS	0CB70ZZ	Excision of Tongue, Open Approach	
Head and Neck	ICD-10-PCS	0CB73ZZ	Excision of Tongue, Percutaneous Approach	
Head and Neck	ICD-10-PCS	0CB7XZZ	Excision of Tongue, External Approach	
Head and Neck	ICD-10-PCS	0CBM0ZZ	Excision of Pharynx, Open Approach	
Head and Neck	ICD-10-PCS	0CBM3ZZ	Excision of Pharynx, Percutaneous Approach	
Head and Neck	ICD-10-PCS	0CBM4ZZ	Excision of Pharynx, Percutaneous Endoscopic Approach	
Head and Neck	ICD-10-PCS	0CBM7ZZ	Excision of Pharynx, Via Natural or Artificial Opening	
Head and Neck	ICD-10-PCS	0CBM8ZZ	Excision of Pharynx, Endo	
Head and Neck	ICD-10-PCS	0CBR0ZZ	Excision of Epiglottis, Open Approach	
Head and Neck	ICD-10-PCS	0CBR3ZZ	Excision of Epiglottis, Percutaneous Approach	
Head and Neck	ICD-10-PCS	0CBR4ZZ	Excision of Epiglottis, Percutaneous Endoscopic Approach	
Head and Neck	ICD-10-PCS	0CBR7ZZ	Excision of Epiglottis, Via Natural or Artificial Opening	
Head and Neck	ICD-10-PCS	0CBR8ZZ	Excision of Epiglottis, Endo	
Head and Neck	ICD-10-PCS	0CBS0ZZ	Excision of Larynx, Open Approach	
Head and Neck	ICD-10-PCS	0CBS3ZZ	Excision of Larynx, Percutaneous Approach	
Head and Neck	ICD-10-PCS	0CBS4ZZ	Excision of Larynx, Percutaneous Endoscopic Approach	
Head and Neck	ICD-10-PCS	0CBS7ZZ	Excision of Larynx, Via Natural or Artificial Opening	
Head and Neck	ICD-10-PCS	0CBS8ZZ	Excision of Larynx, Endo	
Head and Neck	ICD-10-PCS	0CBT0ZZ	Excision of Right Vocal Cord, Open Approach	
Head and Neck	ICD-10-PCS	0CBT3ZZ	Excision of Right Vocal Cord, Percutaneous Approach	
Head and Neck	ICD-10-PCS	0CBT4ZZ	Excision of Right Vocal Cord, Perc Endo Approach	
Head and Neck	ICD-10-PCS	0CBT7ZZ	Excision of Right Vocal Cord, Via Opening	
Head and Neck	ICD-10-PCS	0CBT8ZZ	Excision of Right Vocal Cord, Endo	
Head and Neck	ICD-10-PCS	0CBV0ZZ	Excision of Left Vocal Cord, Open Approach	
Head and Neck	ICD-10-PCS	0CBV3ZZ	Excision of Left Vocal Cord, Percutaneous Approach	
Head and Neck	ICD-10-PCS	0CBV4ZZ	Excision of Left Vocal Cord, Perc Endo Approach	
Head and Neck	ICD-10-PCS	0CBV7ZZ	Excision of Left Vocal Cord, Via Opening	
Head and Neck	ICD-10-PCS	0CBV8ZZ	Excision of Left Vocal Cord, Endo	

Head and Neck	ICD-10-PCS	0CT70ZZ	Resection of Tongue, Open Approach	
Head and Neck	ICD-10-PCS	0CT7XZZ	Resection of Tongue, External Approach	
Head and Neck	ICD-10-PCS	0CTM0ZZ	Resection of Pharynx, Open Approach	
Head and Neck	ICD-10-PCS	0CTM4ZZ	Resection of Pharynx, Percutaneous Endoscopic Approach	
Head and Neck	ICD-10-PCS	0CTM7ZZ	Resection of Pharynx, Via Natural or Artificial Opening	
Head and Neck	ICD-10-PCS	0CTM8ZZ	Resection of Pharynx, Endo	
Head and Neck	ICD-10-PCS	0CTR0ZZ	Resection of Epiglottis, Open Approach	
Head and Neck	ICD-10-PCS	0CTR4ZZ	Resection of Epiglottis, Percutaneous Endoscopic Approach	
Head and Neck	ICD-10-PCS	0CTR7ZZ	Resection of Epiglottis, Via Natural or Artificial Opening	
Head and Neck	ICD-10-PCS	0CTR8ZZ	Resection of Epiglottis, Endo	
Head and Neck	ICD-10-PCS	0CTS0ZZ	Resection of Larynx, Open Approach	
Head and Neck	ICD-10-PCS	0CTS4ZZ	Resection of Larynx, Percutaneous Endoscopic Approach	
Head and Neck	ICD-10-PCS	0CTS7ZZ	Resection of Larynx, Via Natural or Artificial Opening	
Head and Neck	ICD-10-PCS	0CTS8ZZ	Resection of Larynx, Endo	
Head and Neck	ICD-10-PCS	0CTT0ZZ	Resection of Right Vocal Cord, Open Approach	
Head and Neck	ICD-10-PCS	0CTT4ZZ	Resection of Right Vocal Cord, Perc Endo Approach	
Head and Neck	ICD-10-PCS	0CTT7ZZ	Resection of Right Vocal Cord, Via Opening	
Head and Neck	ICD-10-PCS	0CTT8ZZ	Resection of Right Vocal Cord, Endo	
Head and Neck	ICD-10-PCS	0CTV0ZZ	Resection of Left Vocal Cord, Open Approach	
Head and Neck	ICD-10-PCS	0CTV4ZZ	Resection of Left Vocal Cord, Perc Endo Approach	
Head and Neck	ICD-10-PCS	0CTV7ZZ	Resection of Left Vocal Cord, Via Opening	
Head and Neck	ICD-10-PCS	0CTV8ZZ	Resection of Left Vocal Cord, Endo	
Head and Neck	ICD-10-PCS	0CX6XZZ	Transfer Lower Gingiva, External Approach	
Head and Neck	ICD-10-PCS	0NBT0ZZ	Excision of Right Mandible, Open Approach	
Head and Neck	ICD-10-PCS	0NBT3ZZ	Excision of Right Mandible, Percutaneous Approach	
Head and Neck	ICD-10-PCS	0NBT4ZZ	Excision of Right Mandible, Percutaneous Endoscopic Approach	
Head and Neck	ICD-10-PCS	0NBV0ZZ	Excision of Left Mandible, Open Approach	
Head and Neck	ICD-10-PCS	0NBV3ZZ	Excision of Left Mandible, Percutaneous Approach	
Head and Neck	ICD-10-PCS	0NBV4ZZ	Excision of Left Mandible, Percutaneous Endoscopic Approach	

Head and Neck	ICD-10-PCS	0NTC0ZZ	Resection of Right Sphenoid Bone, Open Approach	
Head and Neck	ICD-10-PCS	0NTD0ZZ	Resection of Left Sphenoid Bone, Open Approach	
Head and Neck	ICD-10-PCS	0NTF0ZZ	Resection of Right Ethmoid Bone, Open Approach	
Head and Neck	ICD-10-PCS	0NTG0ZZ	Resection of Left Ethmoid Bone, Open Approach	
Head and Neck	ICD-10-PCS	0NTH0ZZ	Resection of Right Lacrimal Bone, Open Approach	
Head and Neck	ICD-10-PCS	0NTJ0ZZ	Resection of Left Lacrimal Bone, Open Approach	
Head and Neck	ICD-10-PCS	0NTK0ZZ	Resection of Right Palatine Bone, Open Approach	
Head and Neck	ICD-10-PCS	0NTL0ZZ	Resection of Left Palatine Bone, Open Approach	
Head and Neck	ICD-10-PCS	0NTM0ZZ	Resection of Right Zygomatic Bone, Open Approach	
Head and Neck	ICD-10-PCS	0NTN0ZZ	Resection of Left Zygomatic Bone, Open Approach	
Head and Neck	ICD-10-PCS	0NTP0ZZ	Resection of Right Orbit, Open Approach	
Head and Neck	ICD-10-PCS	0NTQ0ZZ	Resection of Left Orbit, Open Approach	
Head and Neck	ICD-10-PCS	0NTR0ZZ	Resection of Right Maxilla, Open Approach	
Head and Neck	ICD-10-PCS	0NTS0ZZ	Resection of Left Maxilla, Open Approach	
Head and Neck	ICD-10-PCS	0RTC0ZZ	Resection of Right Temporomandibular Joint, Open Approach	
Head and Neck	ICD-10-PCS	0RTD0ZZ	Resection of Left Temporomandibular Joint, Open Approach	
Head and Neck	CPT	21299	Cranio/maxillofacial surgery	
Head and Neck	CPT	21554	Exc neck tum deep 5 cm/>	
Head and Neck	CPT	21558	Resect neck tumor 5 cm/>	
Head and Neck	CPT	31420	Removal of epiglottis	
Head and Neck	CPT	31599	Larynx surgery procedure	
Head and Neck	CPT	41120	Partial removal of tongue	
Head and Neck	CPT	42844	Extensive surgery of throat	
Head and Neck	CPT	42890	Partial removal of pharynx	
Head and Neck	CPT	42950	Reconstruction of throat	
Kidney	ICD-9-CM	55.4	Partial nephrectomy	Nephrectomy
Kidney	ICD-9-CM	55.5	Total nephrectomy	Nephrectomy
Kidney	ICD-9-CM	55.51	Nephroureterectomy	Nephrectomy
Kidney	ICD-9-CM	55.52	Nephrectomy of remaining kidney	Nephrectomy
Kidney	ICD-9-CM	55.53	Removal of transplanted or rejected kidney	Nephrectomy
Kidney	ICD-9-CM	55.54	Bilateral nephrectomy	Nephrectomy
Kidney	ICD-10-PCS	0TB00ZZ	Excision of Right Kidney, Open Approach	Nephrectomy
Kidney	ICD-10-PCS	0TB03ZZ	Excision of Right Kidney, Percutaneous Approach	Nephrectomy
Kidney	ICD-10-PCS	0TB04ZZ	Excision of Right Kidney, Percutaneous Endoscopic Approach	Nephrectomy
Kidney	ICD-10-PCS	0TB07ZZ	Excision of Right Kidney, Via Natural or Artificial Opening	Nephrectomy

Kidney	ICD-10-PCS	0TB08ZZ	Excision of Right Kidney, Via Natural or Artificial Opening Endoscopic	Nephrectomy
Kidney	ICD-10-PCS	0TB10ZZ	Excision of Left Kidney, Open Approach	Nephrectomy
Kidney	ICD-10-PCS	0TB13ZZ	Excision of Left Kidney, Percutaneous Approach	Nephrectomy
Kidney	ICD-10-PCS	0TB14ZZ	Excision of Left Kidney, Percutaneous Endoscopic Approach	Nephrectomy
Kidney	ICD-10-PCS	0TB17ZZ	Excision of Left Kidney, Via Natural or Artificial Opening	Nephrectomy
Kidney	ICD-10-PCS	0TB18ZZ	Excision of Left Kidney, Via Natural or Artificial Opening Endoscopic	Nephrectomy
Kidney	ICD-10-PCS	0TB30ZZ	Excision of Right Kidney Pelvis, Open Approach	Nephrectomy
Kidney	ICD-10-PCS	0TB33ZZ	Excision of Right Kidney Pelvis, Percutaneous Approach	Nephrectomy
Kidney	ICD-10-PCS	0TB34ZZ	Excision of Right Kidney Pelvis, Percutaneous Endoscopic Approach	Nephrectomy
Kidney	ICD-10-PCS	0TB37ZZ	Excision of Right Kidney Pelvis, Via Natural or Artificial Opening	Nephrectomy
Kidney	ICD-10-PCS	0TB38ZZ	Excision of Right Kidney Pelvis, Via Natural or Artificial Opening Endoscopic	Nephrectomy
Kidney	ICD-10-PCS	0TB40ZZ	Excision of Left Kidney Pelvis, Open Approach	Nephrectomy
Kidney	ICD-10-PCS	0TB43ZZ	Excision of Left Kidney Pelvis, Percutaneous Approach	Nephrectomy
Kidney	ICD-10-PCS	0TB44ZZ	Excision of Left Kidney Pelvis, Percutaneous Endoscopic Approach	Nephrectomy
Kidney	ICD-10-PCS	0TB47ZZ	Excision of Left Kidney Pelvis, Via Natural or Artificial Opening	Nephrectomy
Kidney	ICD-10-PCS	0TB48ZZ	Excision of Left Kidney Pelvis, Via Natural or Artificial Opening Endoscopic	Nephrectomy
Kidney	ICD-10-PCS	0TT00ZZ	Resection of Right Kidney, Open Approach	Nephrectomy
Kidney	ICD-10-PCS	0TT04ZZ	Resection of Right Kidney, Percutaneous Endoscopic Approach	Nephrectomy
Kidney	ICD-10-PCS	0TT10ZZ	Resection of Left Kidney, Open Approach	Nephrectomy
Kidney	ICD-10-PCS	0TT14ZZ	Resection of Left Kidney, Percutaneous Endoscopic Approach	Nephrectomy
Kidney	ICD-10-PCS	0TT20ZZ	Resection of Bilateral Kidneys, Open Approach	Nephrectomy
Kidney	ICD-10-PCS	0TT24ZZ	Resection of Bilateral Kidneys, Percutaneous Endoscopic Approach	Nephrectomy
Kidney	ICD-10-PCS	0TT30ZZ	Resection of Right Kidney Pelvis, Open Approach	Nephrectomy
Kidney	ICD-10-PCS	0TT34ZZ	Resection of Right Kidney Pelvis, Percutaneous Endoscopic	Nephrectomy
Kidney	ICD-10-PCS	0TT37ZZ	Resection of Right Kidney Pelvis, Via Natural or Artificial Opening	Nephrectomy

Kidney	ICD-10-PCS	0TT38ZZ	Resection of Right Kidney Pelvis, Via Natural or Artificial Opening Endoscopic	Nephrectomy
Kidney	ICD-10-PCS	0TT40ZZ	Resection of Left Kidney Pelvis, Open Approach	Nephrectomy
Kidney	ICD-10-PCS	0TT44ZZ	Resection of Left Kidney Pelvis, Percutaneous Endoscopic Approach	Nephrectomy
Kidney	ICD-10-PCS	0TT47ZZ	Resection of Left Kidney Pelvis, Via Natural or Artificial Opening	Nephrectomy
Kidney	ICD-10-PCS	0TT48ZZ	Resection of Left Kidney Pelvis, Via Natural or Artificial Opening Endoscopic	Nephrectomy
Kidney	ICD-10-PCS	0TT60ZZ	Resection of Right Ureter, Open Approach	Nephrectomy
Kidney	ICD-10-PCS	0TT64ZZ	Resection of Right Ureter, Percutaneous Endoscopic Approach	Nephrectomy
Kidney	ICD-10-PCS	0TT67ZZ	Resection of Right Ureter, Via Natural or Artificial Opening	Nephrectomy
Kidney	ICD-10-PCS	0TT68ZZ	Resection of Right Ureter, Via Natural or Artificial Opening Endoscopic	Nephrectomy
Kidney	ICD-10-PCS	0TT70ZZ	Resection of Left Ureter, Open Approach	Nephrectomy
Kidney	ICD-10-PCS	0TT74ZZ	Resection of Left Ureter, Percutaneous Endoscopic Approach	Nephrectomy
Kidney	ICD-10-PCS	0TT77ZZ	Resection of Left Ureter, Via Natural or Artificial Opening	Nephrectomy
Kidney	ICD-10-PCS	0TT78ZZ	Resection of Left Ureter, Via Natural or Artificial Opening Endoscopic	Nephrectomy
Kidney	CPT	50220	Nephrectomy, including partial ureterectomy, any open approach including rib resection;	
Kidney	CPT	50225	Nephrectomy, including partial ureterectomy, any open approach including rib resection; complicated because of previous surgery on same kidney	
Kidney	CPT	50230	Nephrectomy, including partial ureterectomy, any open approach including rib resection; radical, with regional lymphadenectomy and/or vena caval thrombectomy	
Kidney	CPT	50234	Nephrectomy with total ureterectomy and bladder cuff; through same incision	
Kidney	CPT	50236	Nephrectomy with total ureterectomy and bladder cuff; through separate incision	
Kidney	CPT	50240	Nephrectomy, partial	
Kidney	CPT	50543	Laparoscopic partial nephrectomy	
Kidney	CPT	50545	Laparoscopy, surgical; radical nephrectomy (includes removal of Gerota's fascia and surrounding fatty tissue, removal of regional lymph nodes, and adrenalectomy	

Kidney	CPT	50546	Laparoscopy, surgical; nephrectomy, including partial ureterectomy	
Kidney	CPT	50548	Laparoscopy, surgical; nephrectomy with total ureterectomy	
Liver	ICD-9-CM	50.22	Partial hepatectomy	
Liver	ICD-9-CM	50.3	Hepatic lobectomy	
Liver	ICD-9-CM	50.4	Total hepatectomy	
Liver	ICD-9-CM	50.59	Liver transplant NEC	
Liver	ICD-9-CM	50.99	Other operations of Liver	
Liver	ICD-10-PCS	0FB00ZZ	Excision of Liver, Open Approach	
Liver	ICD-10-PCS	0FB03ZZ	Excision of Liver, Percutaneous Approach	
Liver	ICD-10-PCS	0FB04ZZ	Excision of Liver, Percutaneous Endoscopic Approach	
Liver	ICD-10-PCS	0FT00ZZ	Resection of Liver, Open Approach	
Liver	ICD-10-PCS	0FT04ZZ	Resection of Liver, Percutaneous Endoscopic Approach	
Liver	ICD-10-PCS	0FT10ZZ	Resection of Right Lobe Liver, Open Approach	
Liver	ICD-10-PCS	0FT14ZZ	Resection of Right Lobe Liver, Perc Endo Approach	
Liver	ICD-10-PCS	0FT20ZZ	Resection of Left Lobe Liver, Open Approach	
Liver	ICD-10-PCS	0FT24ZZ	Resection of Left Lobe Liver, Perc Endo Approach	
Liver	ICD-10-PCS	0FY00Z0	Transplantation of Liver, Allogeneic, Open Approach	
Liver	ICD-10-PCS	0FY00Z1	Transplantation of Liver, Syngeneic, Open Approach	
Liver	ICD-10-PCS	0FY00Z2	Transplantation of Liver, Zooplastic, Open Approach	
Lung	ICD-9-CM	32.20	Thoracoscopic excision of lesion or tissue of lung	Lung Resection
Lung	ICD-9-CM	32.21	Thoracoscopic excision of lesion or tissue of lung	Lung Resection
Lung	ICD-9-CM	32.22	Thoracoscopic excision of lesion or tissue of lung	Lung Resection
Lung	ICD-9-CM	32.23	Thoracoscopic excision of lesion or tissue of lung	Lung Resection
Lung	ICD-9-CM	32.24	Thoracoscopic excision of lesion or tissue of lung	Lung Resection
Lung	ICD-9-CM	32.25	Thoracoscopic excision of lesion or tissue of lung	Lung Resection
Lung	ICD-9-CM	32.26	Thoracoscopic excision of lesion or tissue of lung	Lung Resection
Lung	ICD-9-CM	32.27	Thoracoscopic excision of lesion or tissue of lung	Lung Resection
Lung	ICD-9-CM	32.28	Thoracoscopic excision of lesion or tissue of lung	Lung Resection
Lung	ICD-9-CM	32.29	Other local excision or destruction of lesion or tissue of lung	
Lung	ICD-9-CM	32.30	Thoracoscopic segmental resection of lung	Lung Resection
Lung	ICD-9-CM	32.39	Other and unspecified segmental resection of lung	Lung Resection
Lung	ICD-9-CM	32.41	Thoracoscopic lobectomy of lung	Lung Resection
Lung	ICD-9-CM	32.49	Other lobectomy of lung	Lung Resection

Lung	ICD-9-CM	32.50	Thoracoscopic pneumonectomy	Lung Resection
Lung	ICD-9-CM	32.59	Other and unspecified pneumonectomy	Lung Resection
Lung	ICD-10-PCS	0B538ZZ	Destruction of Right Main Bronchus, Endo	
Lung	ICD-10-PCS	0B548ZZ	Destruction of Right Upper Lobe Bronchus, Endo	
Lung	ICD-10-PCS	0B558ZZ	Destruction of Right Middle Lobe Bronchus, Endo	
Lung	ICD-10-PCS	0B568ZZ	Destruction of Right Lower Lobe Bronchus, Endo	
Lung	ICD-10-PCS	0B578ZZ	Destruction of Left Main Bronchus, Endo	
Lung	ICD-10-PCS	0B588ZZ	Destruction of Left Upper Lobe Bronchus, Endo	
Lung	ICD-10-PCS	0B598ZZ	Destruction of Lingula Bronchus, Endo	
Lung	ICD-10-PCS	0B5B8ZZ	Destruction of Left Lower Lobe Bronchus, Endo	
Lung	ICD-10-PCS	0B5K0ZZ	Destruction of Right Lung, Open Approach	
Lung	ICD-10-PCS	0B5K3ZZ	Destruction of Right Lung, Percutaneous Approach	
Lung	ICD-10-PCS	0B5K4ZZ	Destruction of Right Lung, Percutaneous Endoscopic Approach	
Lung	ICD-10-PCS	0B5K7ZZ	Destruction of Right Lung, Via Natural or Artificial Opening	
Lung	ICD-10-PCS	0B5K8ZZ	Destruction of Right Lung, Endo	
Lung	ICD-10-PCS	0B5L0ZZ	Destruction of Left Lung, Open Approach	
Lung	ICD-10-PCS	0B5L3ZZ	Destruction of Left Lung, Percutaneous Approach	
Lung	ICD-10-PCS	0B5L4ZZ	Destruction of Left Lung, Percutaneous Endoscopic Approach	
Lung	ICD-10-PCS	0B5L7ZZ	Destruction of Left Lung, Via Natural or Artificial Opening	
Lung	ICD-10-PCS	0B5L8ZZ	Destruction of Left Lung, Endo	
Lung	ICD-10-PCS	0B5M0ZZ	Destruction of Bilateral Lungs, Open Approach	
Lung	ICD-10-PCS	0B5M3ZZ	Destruction of Bilateral Lungs, Percutaneous Approach	
Lung	ICD-10-PCS	0B5M4ZZ	Destruction of Bilateral Lungs, Perc Endo Approach	
Lung	ICD-10-PCS	0B5M7ZZ	Destruction of Bilateral Lungs, Via Opening	
Lung	ICD-10-PCS	0B5M8ZZ	Destruction of Bilateral Lungs, Endo	
Lung	ICD-10-PCS	0BBC4ZZ	Excision of Right Upper Lung Lobe, Perc Endo Approach	Lung Resection
Lung	ICD-10-PCS	0BBD4ZZ	Excision of Right Middle Lung Lobe, Perc Endo Approach	Lung Resection
Lung	ICD-10-PCS	0BBF4ZZ	Excision of Right Lower Lung Lobe, Perc Endo Approach	Lung Resection
Lung	ICD-10-PCS	0BBG4ZZ	Excision of Left Upper Lung Lobe, Perc Endo Approach	Lung Resection
Lung	ICD-10-PCS	0BBH4ZZ	Excision of Lung Lingula, Percutaneous Endoscopic Approach	Lung Resection

Lung	ICD-10-PCS	0BBJ4ZZ	Excision of Left Lower Lung Lobe, Perc Endo Approach	Lung Resection
Lung	ICD-10-PCS	0BBK0ZZ	Excision of Right Lung, Open Approach	Lung Resection
Lung	ICD-10-PCS	0BBK3ZZ	Excision of Right Lung, Percutaneous Approach	Lung Resection
Lung	ICD-10-PCS	0BBK4ZZ	Excision of Right Lung, Percutaneous Endoscopic Approach	Lung Resection
Lung	ICD-10-PCS	0BBK7ZZ	Excision of Right Lung, Via Natural or Artificial Opening	Lung Resection
Lung	ICD-10-PCS	0BBK8ZZ	Excision of Right Lung, Endo	Lung Resection
Lung	ICD-10-PCS	0BBL0ZZ	Excision of Left Lung, Open Approach	Lung Resection
Lung	ICD-10-PCS	0BBL3ZZ	Excision of Left Lung, Percutaneous Approach	Lung Resection
Lung	ICD-10-PCS	0BBL4ZZ	Excision of Left Lung, Percutaneous Endoscopic Approach	Lung Resection
Lung	ICD-10-PCS	0BBL7ZZ	Excision of Left Lung, Via Natural or Artificial Opening	Lung Resection
Lung	ICD-10-PCS	0BBL8ZZ	Excision of Left Lung, Endo	Lung Resection
Lung	ICD-10-PCS	0BBM0ZZ	Excision of Bilateral Lungs, Open Approach	Lung Resection
Lung	ICD-10-PCS	0BBM3ZZ	Excision of Bilateral Lungs, Percutaneous Approach	Lung Resection
Lung	ICD-10-PCS	0BBM4ZZ	Excision of Bilateral Lungs, Perc Endo Approach	Lung Resection
Lung	ICD-10-PCS	0BBM7ZZ	Excision of Bilateral Lungs, Via Opening	Lung Resection
Lung	ICD-10-PCS	0BBM8ZZ	Excision of Bilateral Lungs, Endo	Lung Resection
Lung	ICD-10-PCS	0BTC0ZZ	Resection of Right Upper Lung Lobe, Open Approach	Lung Resection
Lung	ICD-10-PCS	0BTC4ZZ	Resection of Right Upper Lung Lobe, Perc Endo Approach	Lung Resection
Lung	ICD-10-PCS	0BTD0ZZ	Resection of Right Middle Lung Lobe, Open Approach	Lung Resection
Lung	ICD-10-PCS	0BTD4ZZ	Resection of Right Middle Lung Lobe, Perc Endo Approach	Lung Resection
Lung	ICD-10-PCS	0BTF0ZZ	Resection of Right Lower Lung Lobe, Open Approach	Lung Resection
Lung	ICD-10-PCS	0BTF4ZZ	Resection of Right Lower Lung Lobe, Perc Endo Approach	Lung Resection
Lung	ICD-10-PCS	0BTG0ZZ	Resection of Left Upper Lung Lobe, Open Approach	Lung Resection
Lung	ICD-10-PCS	0BTG4ZZ	Resection of Left Upper Lung Lobe, Perc Endo Approach	Lung Resection
Lung	ICD-10-PCS	0BTH0ZZ	Resection of Lung Lingula, Open Approach	Lung Resection
Lung	ICD-10-PCS	0BTH4ZZ	Resection of Lung Lingula, Percutaneous Endoscopic Approach	Lung Resection
Lung	ICD-10-PCS	0BTJ0ZZ	Resection of Left Lower Lung Lobe, Open Approach	Lung Resection
Lung	ICD-10-PCS	0BTJ4ZZ	Resection of Left Lower Lung Lobe, Perc Endo Approach	Lung Resection
Lung	ICD-10-PCS	0BTK0ZZ	Resection of Right Lung, Open Approach	Lung Resection
Lung	ICD-10-PCS	0BTK4ZZ	Resection of Right Lung, Percutaneous Endoscopic Approach	Lung Resection

Lung	ICD-10-PCS	0BTL0ZZ	Resection of Left Lung, Open Approach	Lung Resection
Lung	ICD-10-PCS	0BTL4ZZ	Resection of Left Lung, Percutaneous Endoscopic Approach	Lung Resection
Lung	ICD-10-PCS	0BTM0ZZ	Resection of Bilateral Lungs, Open Approach	Lung Resection
Lung	ICD-10-PCS	0BTM4ZZ	Resection of Bilateral Lungs, Perc Endo Approach	Lung Resection
Ovarian	ICD-9-CM	65.49	Oth uni salpingo-oophor	
Ovarian	ICD-9-CM	65.51	Oth remove both ovaries	
Ovarian	ICD-9-CM	65.52	Oth remove remain ovary	
Ovarian	ICD-9-CM	65.53	Lap remove both ovaries	
Ovarian	ICD-9-CM	65.61	Oth remove ovaries/tubes	
Ovarian	ICD-9-CM	65.62	Oth remove rem ova/tube	
Ovarian	ICD-9-CM	68.31	Lap scervic hysterectomy	
Ovarian	ICD-9-CM	68.39	Subtotl abd hyst NEC/NOS	
Ovarian	ICD-9-CM	68.41	Lap total abdominal hyst	
Ovarian	ICD-9-CM	68.49	Total abd hyst NEC/NOS	
Ovarian	ICD-9-CM	68.51	Lap ast vag hysterectomy	
Ovarian	ICD-9-CM	68.61	Lap radical abdomnl hyst	
Ovarian	ICD-9-CM	68.69	Radical abd hyst NEC/NOS	
Ovarian	ICD-9-CM	68.71	Lap radical vaginal hyst	
Ovarian	ICD-9-CM	68.79	Radical vag hyst NEC/NOS	
Ovarian	ICD-9-CM	68.8	Pelvic evisceration	
Ovarian	ICD-9-CM	68.9	Hysterectomy NEC/NOS	
Ovarian	ICD-10-PCS	0TTB0ZZ	Resection of Bladder, Open Approach	Cystectomy
Ovarian	ICD-10-PCS	0TTD0ZZ	Resection of Urethra, Open Approach	
Ovarian	ICD-10-PCS	0U508ZZ	Destruction of Right Ovary, Via Natural or Artificial Opening Endoscopic	
Ovarian	ICD-10-PCS	0U518ZZ	Destruction of Left Ovary, Via Natural or Artificial Opening Endoscopic	
Ovarian	ICD-10-PCS	0U528ZZ	Destruction of Bilateral Ovaries, Via Natural or Artificial Opening Endoscopic	
Ovarian	ICD-10-PCS	0U548ZZ	Destruction of Uterine Supporting Structure, Via Natural or Artificial Opening Endoscopic	
Ovarian	ICD-10-PCS	0UT00ZZ	Resection of Right Ovary, Open Approach	
Ovarian	ICD-10-PCS	0UT07ZZ	Resection of Right Ovary, Via Natural or Artificial Opening	
Ovarian	ICD-10-PCS	0UT08ZZ	Resection of Right Ovary, Endo	
Ovarian	ICD-10-PCS	0UT0FZZ	Resection of Right Ovary, Via Opening w Perc Endo	
Ovarian	ICD-10-PCS	0UT10ZZ	Resection of Left Ovary, Open Approach	
Ovarian	ICD-10-PCS	0UT17ZZ	Resection of Left Ovary, Via Natural or Artificial Opening	
Ovarian	ICD-10-PCS	0UT18ZZ	Resection of Left Ovary, Endo	
Ovarian	ICD-10-PCS	0UT1FZZ	Resection of Left Ovary, Via Opening w Perc Endo	
Ovarian	ICD-10-PCS	0UT20ZZ	Resection of Bilateral Ovaries, Open Approach	
Ovarian	ICD-10-PCS	0UT24ZZ	Resection of Bilateral Ovaries, Perc Endo Approach	

Ovarian	ICD-10-PCS	0UT27ZZ	Resection of Bilateral Ovaries, Via Opening	
Ovarian	ICD-10-PCS	0UT28ZZ	Resection of Bilateral Ovaries, Endo	
Ovarian	ICD-10-PCS	0UT2FZZ	Resection of Bilateral Ovaries, Via Opening w Perc Endo	
Ovarian	ICD-10-PCS	0UT40ZZ	Resection of Uterine Supporting Structure, Open Approach	
Ovarian	ICD-10-PCS	0UT44ZZ	Resection of Uterine Support Struct, Perc Endo Approach	
Ovarian	ICD-10-PCS	0UT70ZZ	Resection of Bilateral Fallopian Tubes, Open Approach	
Ovarian	ICD-10-PCS	0UT90ZL	Resection of Uterus, Supracervical, Open Approach	
Ovarian	ICD-10-PCS	0UT90ZZ	Resection of Uterus, Open Approach	
Ovarian	ICD-10-PCS	0UT94ZL	Resection of Uterus, Supracervical, Percutaneous Endoscopic Approach	
Ovarian	ICD-10-PCS	0UT94ZZ	Resection of Uterus, Percutaneous Endoscopic Approach	
Ovarian	ICD-10-PCS	0UT97ZL	Resection of Uterus, Supracervical, Via Natural or Artificial Opening	
Ovarian	ICD-10-PCS	0UT97ZZ	Resection of Uterus, Via Natural or Artificial Opening	
Ovarian	ICD-10-PCS	0UT98ZL	Resection of Uterus, Supracervical, Via Natural or Artificial Opening Endoscopic	
Ovarian	ICD-10-PCS	0UT98ZZ	Resection of Uterus, Endo	
Ovarian	ICD-10-PCS	0UT9FZL	Resection of Uterus, Supracervical, Via Natural or Artificial Opening With Percutaneous Endoscopic Assistance	
Ovarian	ICD-10-PCS	0UT9FZZ	Resection of Uterus, Via Opening w Perc Endo	
Ovarian	ICD-10-PCS	0UTC0ZZ	Resection of Cervix, Open Approach	
Ovarian	ICD-10-PCS	0UTC4ZZ	Resection of Cervix, Percutaneous Endoscopic Approach	
Ovarian	ICD-10-PCS	0UTC7ZZ	Resection of Cervix, Via Natural or Artificial Opening	
Ovarian	ICD-10-PCS	0UTC8ZZ	Resection of Cervix, Endo	
Ovarian	ICD-10-PCS	0UTG0ZZ	Resection of Vagina, Open Approach	
Ovarian	CPT	58548	Lap radical hyst	
Ovarian	CPT	58550	Laparo-asst vag hysterectomy	
Ovarian	CPT	58552	Laparo-vag hyst incl t/o	
Ovarian	CPT	58950	Resect ovarian malignancy	
Ovarian	CPT	58953	Tah rad dissect for debulk	
Pancreatic	ICD-9-CM	52.51	Proximal pancreatectomy	Pancreatectomy
Pancreatic	ICD-9-CM	52.52	Distal pancreatectomy	Pancreatectomy
Pancreatic	ICD-9-CM	52.53	Radical subtotal pancreatectomy	Pancreatectomy
Pancreatic	ICD-9-CM	52.59	Other partial pancreatectomy	Pancreatectomy
Pancreatic	ICD-9-CM	52.6	Total pancreatectomy	Pancreatectomy
Pancreatic	ICD-9-CM	52.7	Rad pancreaticoduodenect	Pancreatectomy

Pancreatic	ICD-10-PCS	0FBG0ZZ	Excision of Pancreas, Open Approach	Pancreatectomy
Pancreatic	ICD-10-PCS	0FBG3ZZ	Excision of Pancreas, Percutaneous Approach	Pancreatectomy
Pancreatic	ICD-10-PCS	0FBG4ZZ	Excision of Pancreas, Percutaneous Endoscopic Approach	Pancreatectomy
Pancreatic	ICD-10-PCS	0FBG8ZZ	Excision of Pancreas, Via Natural or Artificial Opening Endoscopic	Pancreatectomy
Pancreatic	ICD-10-PCS	0FTG0ZZ	Resection of Pancreas, Open Approach	Pancreatectomy
Pancreatic	ICD-10-PCS	0FTG4ZZ	Resection of Pancreas, Percutaneous Endoscopic Approach	Pancreatectomy
Pancreatic	CPT	48999	Pancreas surgery procedure	
Prostate	ICD-9-CM	57.71	Pelvic exenteration	Cystectomy
Prostate	ICD-9-CM	60.21	Transureth prostatectomy	
Prostate	ICD-9-CM	60.29	Oth transureth prostatec	
Prostate	ICD-9-CM	60.3	Suprapubic prostatectomy	
Prostate	ICD-9-CM	60.4	Retropubic prostatectomy	
Prostate	ICD-9-CM	60.5	Radical prostatectomy	
Prostate	ICD-9-CM	60.69	Other prostatectomy	
Prostate	ICD-10-PCS	0TTB0ZZ	Resection of Bladder, Open Approach	Cystectomy
Prostate	ICD-10-PCS	0TTB4ZZ	Resection of Bladder, Percutaneous Endoscopic Approach	Cystectomy
Prostate	ICD-10-PCS	0TTB7ZZ	Resection of Bladder, Via Natural or Artificial Opening	Cystectomy
Prostate	ICD-10-PCS	0TTB8ZZ	Resection of Bladder, Endo	Cystectomy
Prostate	ICD-10-PCS	0TTD0ZZ	Resection of Urethra, Open Approach	
Prostate	ICD-10-PCS	0TTD4ZZ	Resection of Urethra, Percutaneous Endoscopic Approach	
Prostate	ICD-10-PCS	0TTD7ZZ	Resection of Urethra, Via Natural or Artificial Opening	
Prostate	ICD-10-PCS	0TTD8ZZ	Resection of Urethra, Endo	
Prostate	ICD-10-PCS	0V507ZZ	Destruction of Prostate, Via Natural or Artificial Opening	
Prostate	ICD-10-PCS	0V508ZZ	Destruction of Prostate, Endo	
Prostate	ICD-10-PCS	0VB07ZZ	Excision of Prostate, Via Natural or Artificial Opening	
Prostate	ICD-10-PCS	0VB08ZZ	Excision of Prostate, Endo	
Prostate	ICD-10-PCS	0VT00ZZ	Resection of Prostate, Open Approach	
Prostate	ICD-10-PCS	0VT04ZZ	Resection of Prostate, Percutaneous Endoscopic Approach	
Prostate	ICD-10-PCS	0VT07ZZ	Resection of Prostate, Via Natural or Artificial Opening	
Prostate	ICD-10-PCS	0VT08ZZ	Resection of Prostate, Endo	
Prostate	ICD-10-PCS	0VT30ZZ	Resection of Bilateral Seminal Vesicles, Open Approach	
Prostate	ICD-10-PCS	0VT34ZZ	Resection of Bilateral Seminal Vesicles, Perc Endo Approach	
Prostate	CPT	52601	Prostatectomy (TURP)	
Prostate	CPT	52648	Laser surgery of prostate	
Prostate	CPT	55845	Prostatectomy, retropubic radical, with or without nerve sparing; with	

			bilateral pelvic lymphadenectomy, including external iliac, hypogastric, and obturator nodes	
Prostate	CPT	55874	Transperineal placement biodegrad mat, injections, perioprostatic	
Small Intestine / Colorectal	ICD-9-CM	17.31	Laparoscopic multiple segmental resection of large intestine	Colectomy
Small Intestine / Colorectal	ICD-9-CM	17.32	Laparoscopic cecectomy	Colectomy
Small Intestine / Colorectal	ICD-9-CM	17.33	Laparoscopic right hemicolectomy	Colectomy
Small Intestine / Colorectal	ICD-9-CM	17.34	Laparoscopic resection of transverse colon	Colectomy
Small Intestine / Colorectal	ICD-9-CM	17.35	Laparoscopic left hemicolectomy	Colectomy
Small Intestine / Colorectal	ICD-9-CM	17.36	Laparoscopic sigmoidectomy	Colectomy
Small Intestine / Colorectal	ICD-9-CM	17.39	Other laparoscopic partial excision of large intestine	Colectomy
Small Intestine / Colorectal	ICD-9-CM	17.42	Lap robotic assist proc	
Small Intestine / Colorectal	ICD-9-CM	44.39	Gastroenterostomy NEC	
Small Intestine / Colorectal	ICD-9-CM	45.22	Endosc lg bowel thru st	
Small Intestine / Colorectal	ICD-9-CM	45.62	Part sm bowel resect NEC	
Small Intestine / Colorectal	ICD-9-CM	45.71	Open and other multiple segmental resection of large intestine	Colectomy
Small Intestine / Colorectal	ICD-9-CM	45.72	Open and other cecectomy	Colectomy
Small Intestine / Colorectal	ICD-9-CM	45.73	Open and other right hemicolectomy	Colectomy
Small Intestine / Colorectal	ICD-9-CM	45.74	Open and other resection of transverse colon	Colectomy
Small Intestine / Colorectal	ICD-9-CM	45.75	Open and other left hemicolectomy	Colectomy
Small Intestine / Colorectal	ICD-9-CM	45.76	Open and other sigmoidectomy	Colectomy
Small Intestine / Colorectal	ICD-9-CM	45.79	Other and unspecified partial excision of large intestine	Colectomy
Small Intestine / Colorectal	ICD-9-CM	45.81	Laparoscopic total intra-abdominal colectomy	Colectomy
Small Intestine / Colorectal	ICD-9-CM	45.82	Open total intra-abdominal colectomy	Colectomy
Small Intestine / Colorectal	ICD-9-CM	45.83	Other and unspecified total intra-abdominal colectomy	Colectomy
Small Intestine / Colorectal	ICD-9-CM	46.04	Resect ext seg lg bowel	Colectomy
Small Intestine / Colorectal	ICD-9-CM	46.51	Sm bowel stoma closure	
Small Intestine / Colorectal	ICD-9-CM	46.52	Lg bowel stoma closure	
Small Intestine / Colorectal	ICD-9-CM	48.65	Duhamel rectal resection	
Small Intestine / Colorectal	ICD-9-CM	50.23	Opn abltn liver les/tiss	
Small Intestine / Colorectal	ICD-9-CM	50.24	Perc abltn liver les/tis	

Small Intestine / Colorectal	ICD-9-CM	50.25	Lap abltn liver les/tiss	
Small Intestine / Colorectal	ICD-9-CM	50.26	Abltn liver les/tiss NEC	
Small Intestine / Colorectal	ICD-9-CM	50.29	Other destruction of lesion of liver	
Small Intestine / Colorectal	ICD-10-PCS	0D16079	Bypass Stomach to Duodenum with Autol Sub, Open Approach	
Small Intestine / Colorectal	ICD-10-PCS	0D1607A	Bypass Stomach to Jejunum with Autol Sub, Open Approach	
Small Intestine / Colorectal	ICD-10-PCS	0D160J9	Bypass Stomach to Duodenum with Synth Sub, Open Approach	
Small Intestine / Colorectal	ICD-10-PCS	0D160JA	Bypass Stomach to Jejunum with Synth Sub, Open Approach	
Small Intestine / Colorectal	ICD-10-PCS	0D160K9	Bypass Stomach to Duodenum with Nonaut Sub, Open Approach	
Small Intestine / Colorectal	ICD-10-PCS	0D160KA	Bypass Stomach to Jejunum with Nonaut Sub, Open Approach	
Small Intestine / Colorectal	ICD-10-PCS	0D160Z9	Bypass Stomach to Duodenum, Open Approach	
Small Intestine / Colorectal	ICD-10-PCS	0D160ZA	Bypass Stomach to Jejunum, Open Approach	
Small Intestine / Colorectal	ICD-10-PCS	0D16879	Bypass Stomach to Duodenum with Autol Sub, Endo	
Small Intestine / Colorectal	ICD-10-PCS	0D1687A	Bypass Stomach to Jejunum with Autol Sub, Endo	
Small Intestine / Colorectal	ICD-10-PCS	0D168J9	Bypass Stomach to Duodenum with Synthetic Substitute, Endo	
Small Intestine / Colorectal	ICD-10-PCS	0D168JA	Bypass Stomach to Jejunum with Synthetic Substitute, Endo	
Small Intestine / Colorectal	ICD-10-PCS	0D168K9	Bypass Stomach to Duodenum with Nonaut Sub, Endo	
Small Intestine / Colorectal	ICD-10-PCS	0D168KA	Bypass Stomach to Jejunum with Nonaut Sub, Endo	
Small Intestine / Colorectal	ICD-10-PCS	0D168Z9	Bypass Stomach to Duodenum, Endo	
Small Intestine / Colorectal	ICD-10-PCS	0D168ZA	Bypass Stomach to Jejunum, Endo	
Small Intestine / Colorectal	ICD-10-PCS	0DBE0ZZ	Excision of Large Intestine, Open Approach	Colectomy
Small Intestine / Colorectal	ICD-10-PCS	0DBE3ZZ	Excision of Large Intestine, Percutaneous Approach	Colectomy
Small Intestine / Colorectal	ICD-10-PCS	0DBE4ZZ	Excision of Large Intestine, Perc Endo Approach	Colectomy
Small Intestine / Colorectal	ICD-10-PCS	0DBE7ZZ	Excision of Large Intestine, Via Opening	Colectomy
Small Intestine / Colorectal	ICD-10-PCS	0DBE8ZZ	Excision of Large Intestine, Endo	Colectomy
Small Intestine / Colorectal	ICD-10-PCS	0DBF0ZZ	Excision of Right Large Intestine, Open Approach	Colectomy
Small Intestine / Colorectal	ICD-10-PCS	0DBG0ZZ	Excision of Left Large Intestine, Open Approach	Colectomy
Small Intestine / Colorectal	ICD-10-PCS	0DBGFZZ	Excision of Left Large Intestine, Via Natural or Artificial Opening With Percutaneous Endoscopic Assistance	Colectomy
Small Intestine / Colorectal	ICD-10-PCS	0DBK0ZZ	Excision of Ascending Colon, Open Approach	Colectomy
Small Intestine / Colorectal	ICD-10-PCS	0DBL0ZZ	Excision of Transverse Colon, Open Approach	Colectomy

Small Intestine / Colorectal	ICD-10-PCS	0DBLFZZ	Excision of Transverse Colon, Via Natural or Artificial Opening With Percutaneous Endoscopic Assistance	Colectomy
Small Intestine / Colorectal	ICD-10-PCS	0DBM0ZZ	Excision of Descending Colon, Open Approach	Colectomy
Small Intestine / Colorectal	ICD-10-PCS	0DBMFZZ	Excision of Descending Colon, Via Natural or Artificial Opening With Percutaneous Endoscopic Assistance	Colectomy
Small Intestine / Colorectal	ICD-10-PCS	0DBN0ZZ	Excision of Sigmoid Colon, Open Approach	Colectomy
Small Intestine / Colorectal	ICD-10-PCS	0DBNFZZ	Excision of Sigmoid Colon, Via Natural or Artificial Opening With Percutaneous Endoscopic Assistance	Colectomy
Small Intestine / Colorectal	ICD-10-PCS	0DJD8ZZ	Inspection of Lower Intestinal Tract, Endo	
Small Intestine / Colorectal	ICD-10-PCS	0DT90ZZ	Resection of Duodenum, Open Approach	
Small Intestine / Colorectal	ICD-10-PCS	0DT94ZZ	Resection of Duodenum, Percutaneous Endoscopic Approach	
Small Intestine / Colorectal	ICD-10-PCS	0DT97ZZ	Resection of Duodenum, Via Natural or Artificial Opening	
Small Intestine / Colorectal	ICD-10-PCS	0DT98ZZ	Resection of Duodenum, Endo	
Small Intestine / Colorectal	ICD-10-PCS	0DTA0ZZ	Resection of Jejunum, Open Approach	
Small Intestine / Colorectal	ICD-10-PCS	0DTA4ZZ	Resection of Jejunum, Percutaneous Endoscopic Approach	
Small Intestine / Colorectal	ICD-10-PCS	0DTA7ZZ	Resection of Jejunum, Via Natural or Artificial Opening	
Small Intestine / Colorectal	ICD-10-PCS	0DTA8ZZ	Resection of Jejunum, Endo	
Small Intestine / Colorectal	ICD-10-PCS	0DTB0ZZ	Resection of Ileum, Open Approach	
Small Intestine / Colorectal	ICD-10-PCS	0DTB4ZZ	Resection of Ileum, Percutaneous Endoscopic Approach	
Small Intestine / Colorectal	ICD-10-PCS	0DTB7ZZ	Resection of Ileum, Via Natural or Artificial Opening	
Small Intestine / Colorectal	ICD-10-PCS	0DTB8ZZ	Resection of Ileum, Endo	
Small Intestine / Colorectal	ICD-10-PCS	0DTE0ZZ	Resection of Large Intestine, Open Approach	Colectomy
Small Intestine / Colorectal	ICD-10-PCS	0DTE4ZZ	Resection of Large Intestine, Perc Endo Approach	Colectomy
Small Intestine / Colorectal	ICD-10-PCS	0DTE7ZZ	Resection of Large Intestine, Via Opening	Colectomy
Small Intestine / Colorectal	ICD-10-PCS	0DTE8ZZ	Resection of Large Intestine, Endo	Colectomy
Small Intestine / Colorectal	ICD-10-PCS	0DTF0ZZ	Resection of Right Large Intestine, Open Approach	Colectomy
Small Intestine / Colorectal	ICD-10-PCS	0DTF4ZZ	Resection of Right Large Intestine, Perc Endo Approach	Colectomy
Small Intestine / Colorectal	ICD-10-PCS	0DTF7ZZ	Resection of Right Large Intestine, Via Opening	Colectomy
Small Intestine / Colorectal	ICD-10-PCS	0DTF8ZZ	Resection of Right Large Intestine, Endo	Colectomy

Small Intestine / Colorectal	ICD-10-PCS	0DTG0ZZ	Resection of Left Large Intestine, Open Approach	Colectomy
Small Intestine / Colorectal	ICD-10-PCS	0DTG4ZZ	Resection of Left Large Intestine, Perc Endo Approach	Colectomy
Small Intestine / Colorectal	ICD-10-PCS	0DTG7ZZ	Resection of Left Large Intestine, Via Opening	Colectomy
Small Intestine / Colorectal	ICD-10-PCS	0DTG8ZZ	Resection of Left Large Intestine, Endo	Colectomy
Small Intestine / Colorectal	ICD-10-PCS	0DTGFZZ	Resection of Left Large Intestine, Via Natural or Artificial Opening With Percutaneous Endoscopic Assistance	Colectomy
Small Intestine / Colorectal	ICD-10-PCS	0DTH0ZZ	Resection of Cecum, Open Approach	Colectomy
Small Intestine / Colorectal	ICD-10-PCS	0DTH4ZZ	Resection of Cecum, Percutaneous Endoscopic Approach	Colectomy
Small Intestine / Colorectal	ICD-10-PCS	0DTH7ZZ	Resection of Cecum, Via Natural or Artificial Opening	Colectomy
Small Intestine / Colorectal	ICD-10-PCS	0DTH8ZZ	Resection of Cecum, Endo	Colectomy
Small Intestine / Colorectal	ICD-10-PCS	0DTK0ZZ	Resection of Ascending Colon, Open Approach	Colectomy
Small Intestine / Colorectal	ICD-10-PCS	0DTK4ZZ	Resection of Ascending Colon, Percutaneous Endoscopic Approach	Colectomy
Small Intestine / Colorectal	ICD-10-PCS	0DTK7ZZ	Resection of Ascending Colon, Via Natural or Artificial Opening	Colectomy
Small Intestine / Colorectal	ICD-10-PCS	0DTK8ZZ	Resection of Ascending Colon, Via Natural or Artificial Opening Endoscopic	Colectomy
Small Intestine / Colorectal	ICD-10-PCS	0DTL0ZZ	Resection of Transverse Colon, Open Approach	Colectomy
Small Intestine / Colorectal	ICD-10-PCS	0DTL4ZZ	Resection of Transverse Colon, Perc Endo Approach	Colectomy
Small Intestine / Colorectal	ICD-10-PCS	0DTL7ZZ	Resection of Transverse Colon, Via Opening	Colectomy
Small Intestine / Colorectal	ICD-10-PCS	0DTL8ZZ	Resection of Transverse Colon, Endo	Colectomy
Small Intestine / Colorectal	ICD-10-PCS	0DTLFZZ	Resection of Transverse Colon, Via Natural or Artificial Opening With Percutaneous Endoscopic Assistance	Colectomy
Small Intestine / Colorectal	ICD-10-PCS	0DTM0ZZ	Resection of Descending Colon, Open Approach	Colectomy
Small Intestine / Colorectal	ICD-10-PCS	0DTM4ZZ	Resection of Descending Colon, Percutaneous Endoscopic Approach	Colectomy
Small Intestine / Colorectal	ICD-10-PCS	0DTM7ZZ	Resection of Descending Colon, Via Natural or Artificial Opening	Colectomy
Small Intestine / Colorectal	ICD-10-PCS	0DTM8ZZ	Resection of Descending Colon, Via Natural or Artificial Opening Endoscopic	Colectomy
Small Intestine / Colorectal	ICD-10-PCS	0DTMFZZ	Resection of Descending Colon, Via Natural or Artificial Opening With Percutaneous Endoscopic Assistance	Colectomy
Small Intestine / Colorectal	ICD-10-PCS	0DTN0ZZ	Resection of Sigmoid Colon, Open Approach	Colectomy

Small Intestine / Colorectal	ICD-10-PCS	0DTN4ZZ	Resection of Sigmoid Colon, Percutaneous Endoscopic Approach	Colectomy
Small Intestine / Colorectal	ICD-10-PCS	0DTN7ZZ	Resection of Sigmoid Colon, Via Opening	Colectomy
Small Intestine / Colorectal	ICD-10-PCS	0DTN8ZZ	Resection of Sigmoid Colon, Endo	Colectomy
Small Intestine / Colorectal	ICD-10-PCS	0DTNFZZ	Resection of Sigmoid Colon, Via Natural or Artificial Opening With Percutaneous Endoscopic Assistance	Colectomy
Small Intestine / Colorectal	ICD-10-PCS	0DTP0ZZ	Resection of Rectum, Open Approach	Colectomy
Small Intestine / Colorectal	ICD-10-PCS	0DTP4ZZ	Resection of Rectum, Percutaneous Endoscopic Approach	Colectomy
Small Intestine / Colorectal	ICD-10-PCS	0F500ZZ	Destruction of Liver, Open Approach	
Small Intestine / Colorectal	ICD-10-PCS	0F503ZZ	Destruction of Liver, Percutaneous Approach	
Small Intestine / Colorectal	ICD-10-PCS	0F504ZZ	Destruction of Liver, Percutaneous Endoscopic Approach	
Small Intestine / Colorectal	ICD-10-PCS	8E0W4CZ	Robotic Assisted Procedure of Trunk, Perc Endo Approach	
Small Intestine / Colorectal	CPT	44120	Removal of small intestine	
Small Intestine / Colorectal	CPT	44140	Partial removal of colon	
Small Intestine / Colorectal	CPT	44204	Laparo partial colectomy	
Small Intestine / Colorectal	CPT	44207	L colectomy/coloproctostomy	
Small Intestine / Colorectal	CPT	45123	Partial proctectomy	
Small Intestine / Colorectal	CPT	47100	Wedge biopsy of liver	
Small Intestine / Colorectal	CPT	47120	Hepatectomy, resection of liver; partial lobectomy	
Small Intestine / Colorectal	CPT	47370	Laparo ablate liver tumor rf	
Small Intestine / Colorectal	CPT	47382	Percut ablate liver rf	

eReferences

1. Oncology Care Model, Center for Medicare & Medicaid Innovation. <https://innovation.cms.gov/innovation-models/oncology-care>. Accessed May 28th, 2020.
2. Aliu O, Lee AW, Efron J, Higgins R, Butler C, Offodile A. Assessment of costs and care quality associated with major surgical procedures after implementation of Maryland's capitated budget model. *JAMA Netw open*. 2021;4(9):e2126619.
3. Spetz J, Donaldson N, Aydin C, Brown DS. How many nurses per patient? Measurements of nurse staffing in health services research. *Health Serv Res*. 2008 Oct;43(5 Pt 1):1674-92. doi: 10.1111/j.1475-6773.2008.00850.x. Epub 2008 May 5. PMID: 18459953; PMCID: PMC2653880.
4. Schmitt M. Do hospital mergers reduce costs? *J Health Econ*. 2017 Mar;52:74-94. doi: 10.1016/j.jhealeco.2017.01.007. Epub 2017 Feb 7. PMID: 28236720.