

## **Efficacy and Safety Outcomes with Diroximel Fumarate After Switching from Prior Therapies or Continuing on DRF: Results from the Phase 3 EVOLVE-MS-1 Study**

Sibyl Wray,<sup>1</sup> Florian Then Bergh,<sup>2</sup> Annette Wundes,<sup>3</sup> Douglas L. Arnold,<sup>4,5</sup> Jelena Drulovic,<sup>6</sup> Elzbieta Jasinska,<sup>7</sup> James D. Bowen,<sup>8</sup> Donald Negroski,<sup>9</sup> Robert T. Naismith,<sup>10</sup> Samuel F. Hunter,<sup>11</sup> Mark Gudesblatt,<sup>12</sup> Hailu Chen,<sup>13</sup> Jennifer Lyons,<sup>13</sup> Sai L. Shankar,<sup>13</sup> Shivani Kapadia,<sup>13</sup> Jason P. Mendoza,<sup>13</sup> Barry A. Singer<sup>14</sup>

<sup>1</sup>Hope Neurology MS Center, Knoxville, TN, USA

<sup>2</sup>Department of Neurology, University of Leipzig, Leipzig, Germany

<sup>3</sup>Department of Neurology, University of Washington Medical Center, Seattle, WA, USA

<sup>4</sup>Montreal Neurological Institute, McGill University, Montreal, QC, Canada

<sup>5</sup>NeuroRx Research Inc., Montreal, QC, Canada

<sup>6</sup>Clinic of Neurology, University of Belgrade, Belgrade, Serbia

<sup>7</sup>Collegium Medicum UJK and Clinical Center, RESMEDICA, Kielce, Poland

<sup>8</sup>Multiple Sclerosis Center, Swedish Neuroscience Institute, Seattle, WA, USA

<sup>9</sup>MS Center of Sarasota, Sarasota, FL, USA

<sup>10</sup>Washington University School of Medicine, St. Louis, MO, USA

<sup>11</sup>Advanced Neurosciences Institute, Franklin, TN, USA

<sup>12</sup>South Shore Neurologic Associates, Patchogue, NY, USA

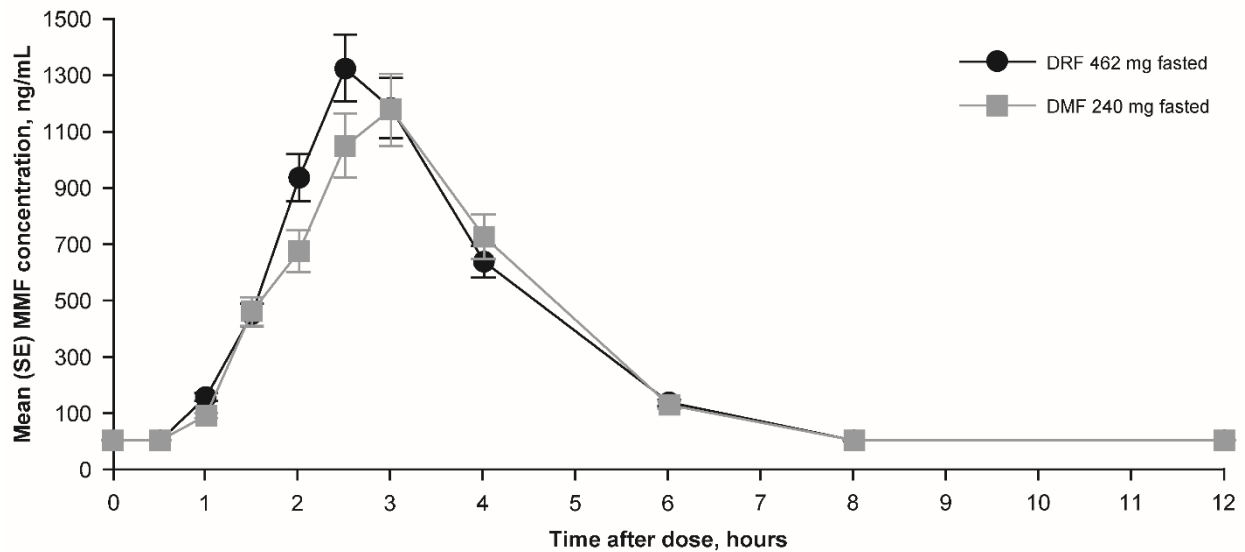
<sup>13</sup>Biogen, Cambridge, MA, USA

<sup>14</sup>The MS Center for Innovations in Care, Missouri Baptist Medical Center, St. Louis, MO, USA

**Corresponding author:** Jason Mendoza, 225 Binney St, Cambridge, MA 02142; email: [jason.mendoza@biogen.com](mailto:jason.mendoza@biogen.com)

## SUPPLEMENTARY MATERIAL

**Supp. Fig. 1** Mean plasma MMF concentration over time following dosing of DRF or DMF. A single oral dose of DRF 462 mg or DMF 240 mg was administered to healthy adults, ages 18 to 55 years, while fasting. MMF was quantified in serum samples collected for pharmacokinetic evaluation following administration of study drug predose and at 0.25, 0.5, 1, 1.5, 2, 2.5, 3, 4, 6, 8, 12, 24, 36, 48, 60, and 72 hours postdose. Mean absorption lag time was 1 hour for both treatments. For DRF and DMF, the median time to maximal concentration was 2.5 and 3.0 hours, respectively. Mean MMF concentrations were less than the lower limit of quantification by 8 hours postdose for both treatments. [1]



*DMF* dimethyl fumarate; *DRF* diroximel fumarate; *MMF* monomethyl fumarate

Reproduced from Naismith RT et al., *Mult Scler.* 2020 [1]

**Supp. Table 1.** List of IRBs and Ethics Committees

<b>Center name</b>	<b>Address</b>
<b>Central IRB</b>	
Copernicus Group IRB	One Triangle Drive Suite 100 Durham, NC 27713
<b>Individual IRBs</b>	
Copernicus Group IRB	One Triangle Drive Suite 100 Durham, NC 27713
The Ottawa Health Science Network Research Ethics Board	725 Parkdale Avenue, Ottawa, Ontario, Canada K1Y 4E9
Western IRB	1019 39th Avenue SE Suite 120 Puyallup, WA 98374
Saint Louis University Institutional Review Board	3556 Caroline St. St. Louis, MO 63104
Indiana University Institutional Review Board	980 Indiana Avenue, Lockefield, Room 3315, Indianapolis, IN 36202
Providence Health & Services Institutional Review Board	5251 NE Glisan Street Portland, OR 97213
The Washington University in St. Louis Institutional Review Board	660 South Euclid Ave., CB 8089 St. Louis, MO 63110
Committee for the Protection of Human Subjects	6410 Fannin St., Suite 1100, Houston, TX 77030
Sutter Health Institutional Review Board	2121 N. California Blvd. Walnut Creek, CA 94596
Georgetown University Institutional Review Board	3900 Reservoir Rd NW Washington, DC 20057
Chesapeake IRB	6940 Columbia Gateway Drive, Suite 110, Columbia, MD 21046
Wake Forest University Health Sciences Institutional Review	Board Medical Center Boulevard, Winston-Salem, NC 27157
Loma Linda University Adventist Health Sciences Center IRB Research Protection Programs	24887 Taylor Street, Suite 202 Loma Linda, CA 92350
BioMed IRB	P.O. Box 600870, San Diego, CA 92160
Mercy Medical Center Des Moines Institutional Review Board	1111 6th Ave., Des Moines, IA 50314
UNM Human Research Protections Office	1 University of New Mexico, MSC:08- 4560, Albuquerque, NM 87131
Upstate Medical University Institutional Review Board	Weiskotten Hall, Rm. 1109 Syracuse, NY 13210
Henry Ford Health System Research Administration, IRB	One Ford Place, Suite 2-F Detroit, MI 48202
OMRF IRB	825 NE 13th Street Oklahoma City, OK 73104
Ethisch Comité AZ Sint-Jan Brugge- Oostende	Ruddershove 10 Brugge Belgium 8000
Ethics Committee for Multicenter Trials	8, Damyan Gruev Str. Sofia, Bulgaria 1303
Ethik-Kommission der Landesärztekammer Baden- Württemberg	Jahnstraße 40 Stuttgart Germany 70597
Ethikkommission Technische Universität Dresden	Fetscherstraße 74 Dresden Germany 01307
Ethik-Kommission der Ärztekammer Niedersachsen	Berliner Allee 20 Hannover Germany 30175
Ethik-Kommission an der Medizinischen Fakultät der Universität Leipzig Haus: Karl-Sudhoff-Institut	Karl-Sudhoff-Institut Käthe-Kollwitz-Straße 82, Leipzig Germany 04109
Ethikkommission der Universität Ulm	Helmholtzstraße 20 (Oberer Eselsberg) Ulm Germany 89081

Komisja Bioetyczna przy Uniwersytecie Medycznym w Łodzi	Plac Hallera 1B Łódź Poland 90-647
Independant Ethics Committee of the NRSBHI City Clinical Hospital No. 3	21, Verkhnevolzhskaya nab. Nizhny Novgorod Russia 603155
Local Ethics Committee of the Federal State Budget Institution Federal Siberian Research Clinical Centre of the Federal Medical Biological Agency of Russia	26, Kolomenskaya str. Krasnoyarsk Krasnoyarsk's region Russia 660037
CEIC Hospital General Universitario Gregorio Marañón Pabellón de Gobierno	1ª planta C/ Dr. Esquerdo, 46, Madrid Spain 28007
Ethics Committee of Communal institution Odesa Regional Clinical Hospital	26 Zabolotnogo Str. Odesa Ukraine 65000
Commission on Ethics and Deontology of State Institution Institute of Neurology Psychiatry and Narcology of National Academy of Medical Sciences of Ukraine	46 Akademika Pavlova str. Kharkiv Ukraine 61068
Ethics Committee of Lviv Regional Clinical Hospital	7 Chernihivska Str. Lviv Ukraine 79000
The Ethics Committee of Kharkiv Railway Clinical Hospital #1 of Branch "Health Center" of the Public joint stock company "Ukrainian Railway"	5 Balakireva lane Kharkiv Ukraine 61103
Ethics Committee of Communal Institution Zaporizhzhya Regional Clinical Hospital of Zaporizhzhya regional Council	10 Orekhivske shose Zaporizhzhya Ukraine 69600
Ethics Committee of Ivano-Frankivsk Regional Clinical Hospital	91 Fedkovycha Str. Ivano-Frankivsk Ukraine 76000
Ethics Committee of Communal Institution Zaporizhzhya City Multiple Discipline Clinical Hospital #9	1 Shastlyva str. Zaporizhzhya Ukraine 69065
Ethics Committee of Communal institution Dnipropetrovsk regional clinical hospital after Mechnikov I.I.	14 Soborna sq. Dnipro Ukraine 49005
Ethics Committee of State Institution Institute of Neurology Psychiatry and Narcology of National Academy of Medical Sciences of Ukraine	46, Akademika Pavlova Str. Kharkiv Ukraine 61068
Local Ethics Committee of Clinical Center Kragujevac	Zmaj Jovina 30, Kragujevac, Serbia, 34000
Local Ethics Committee of Military Medical Academy	Crnotravska 17, Belgrade, Serbia, 11000
Local Ethics Committee of Zvezdara University Medical Center	Dimitrija Tucovica 161, Belgrade, Serbia, 11000
Local Ethics Committee of Clinical Center Nis	Bulevar dr Zorana Đinđića 48, Nis, Serbia, 18000
Local Ethics Committee of Clinical Center of Serbia	Dr. Subotica 6, Belgrade, Serbia, 11000

1. Naismith RT, Wolinsky JS, Wundes A, et al. Droximel fumarate (DRF) in patients with relapsing-remitting multiple sclerosis: Interim safety and efficacy results from the phase 3 EVOLVE-MS-1 study. *Mult Scler.* 2020;26(13):1729-39.