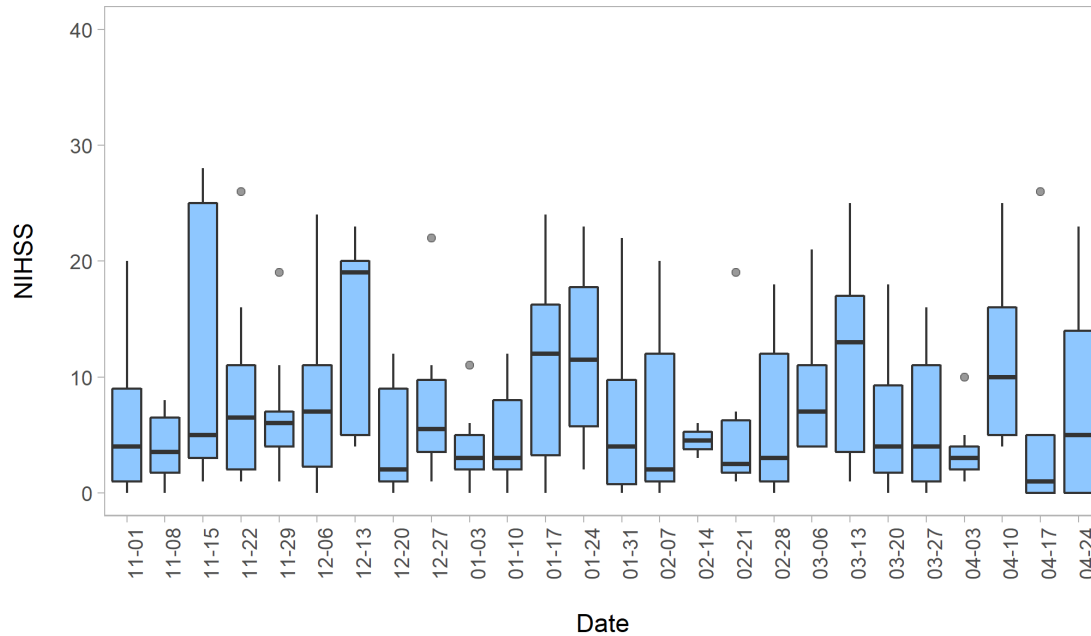


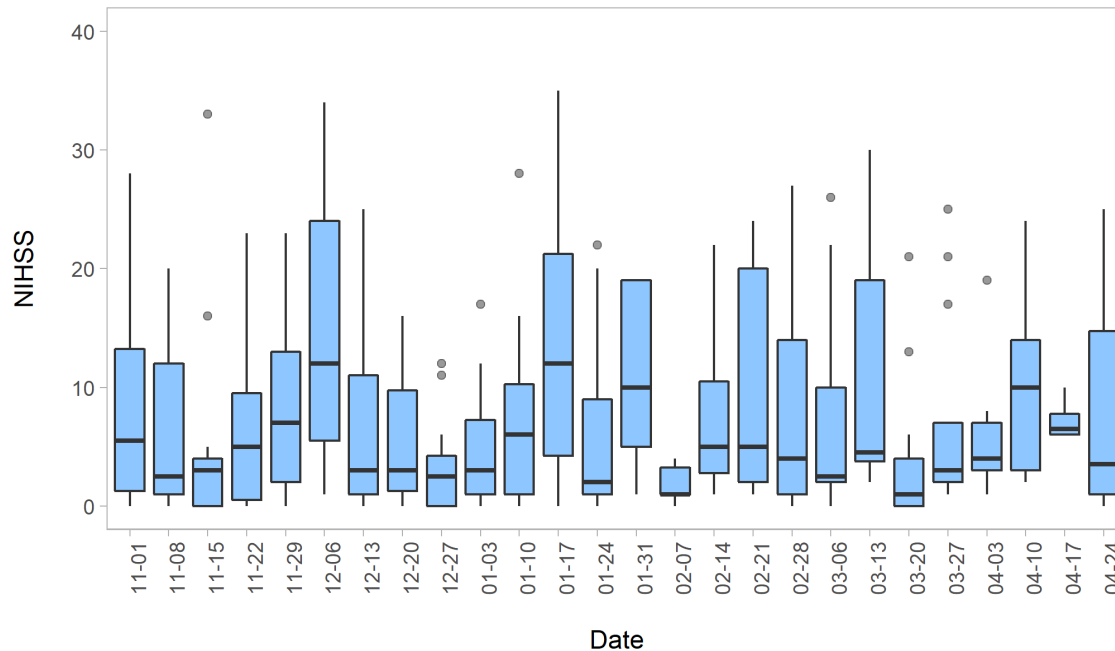
SUPPLEMENTAL MATERIAL

Supplemental Figure. Boxplots of NIHSS by Week, from November 1, 2019 – April 30, 2020

A. Telestroke Consults: NIHSS Distribution by Week



B. CSC Stroke Admissions: NIHSS Distribution by Week



Legend. NIHSS: National Institutes of Health Stroke Scale; CSC: Comprehensive Stroke Center. For each week, the shaded rectangle encloses the 25th to 75th percentile of NIHSS scores, with the horizontal line giving the median score. The whiskers present the upper and lower adjacent values. Outliers are indicated by the points outside of the whiskers.