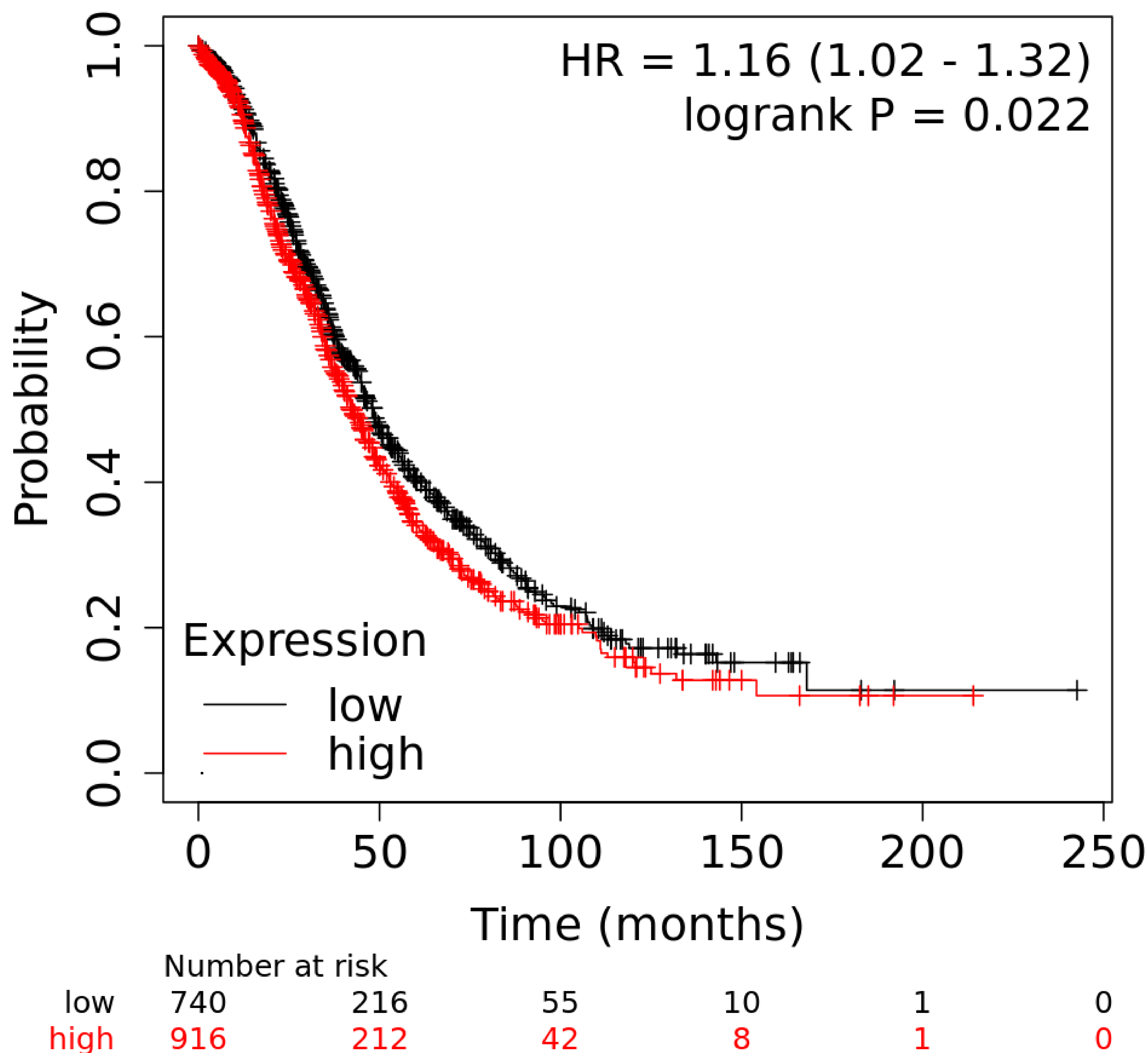


Supplementary Table 1: Ovarian Cancer - Prognoscan Online Platform Analysis

Cohort	Contributor	Array type	Probe ID	N	COX p-value	HR [95% CI]
Duke	Bild	HG-U133A	221561_at	133	0.0145 ^a	0.51 [0.29 - 0.87]
Milan (1992-2003)	Marchini	G4100A	12236	81	0.0119 ^a	2.25 [1.20 - 4.22]
MSKCC (1990-2003)	Bonome	HG-U133_Plus_2	221561_at	185	0.0019 ^b	2.28 [1.36 - 3.82]
MSKCC (1990-2003)	Bonome	HG-U133_Plus_2	221561_at	185	0.0216 ^a	1.96 [1.10 - 3.47]

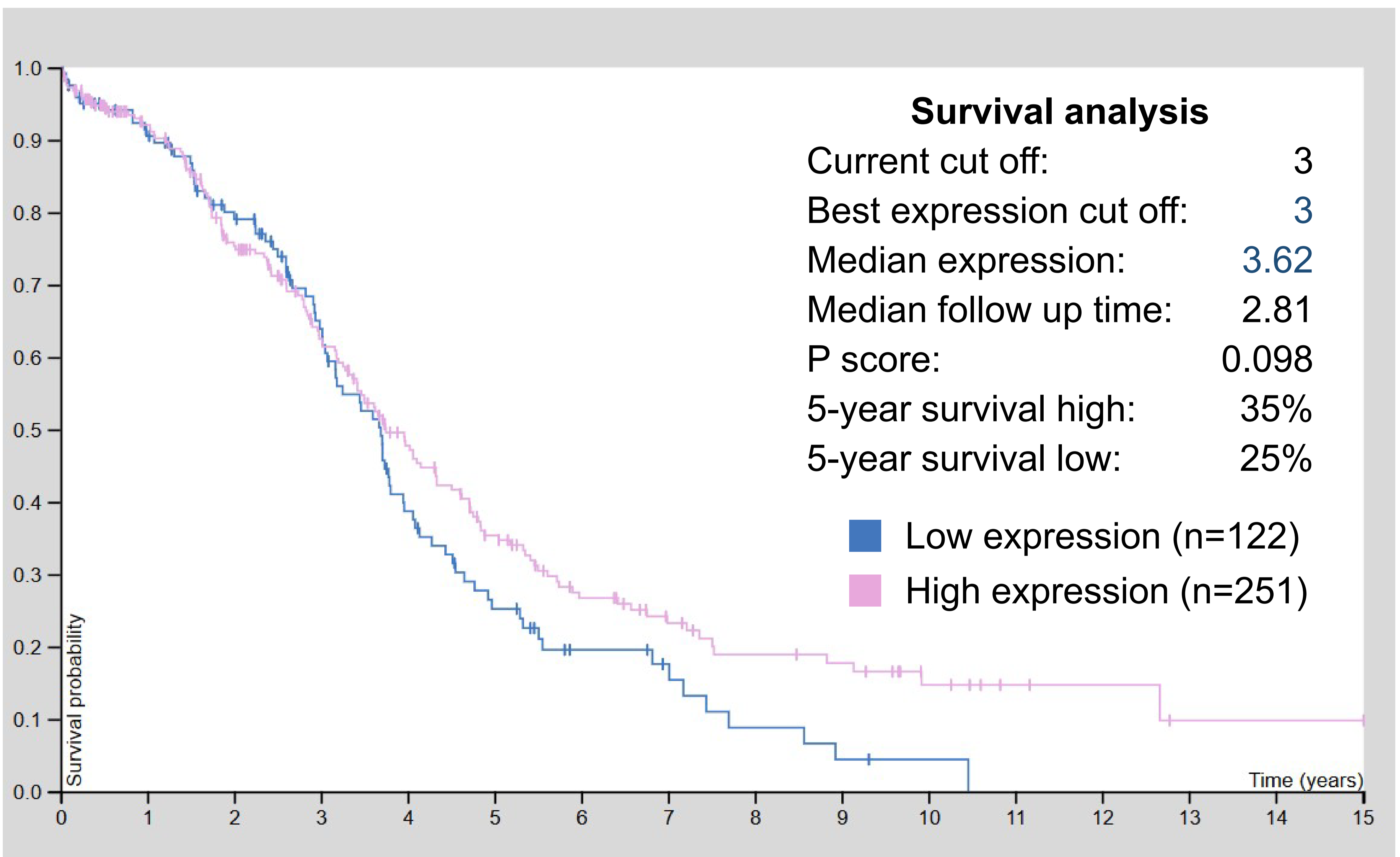
a: overall survival; b: disease free survival

Supplementary Figure 1: Kaplan-Meier Plotter Analysis. *Overall survival* curves for SOAT1 (221561_at) were obtained for Ovarian Cancer patients divided into two groups as low-expression and high expression based on the optimal cut-off value for survival. Information was obtained from the public database available at <https://kmplot.com/analysis/>



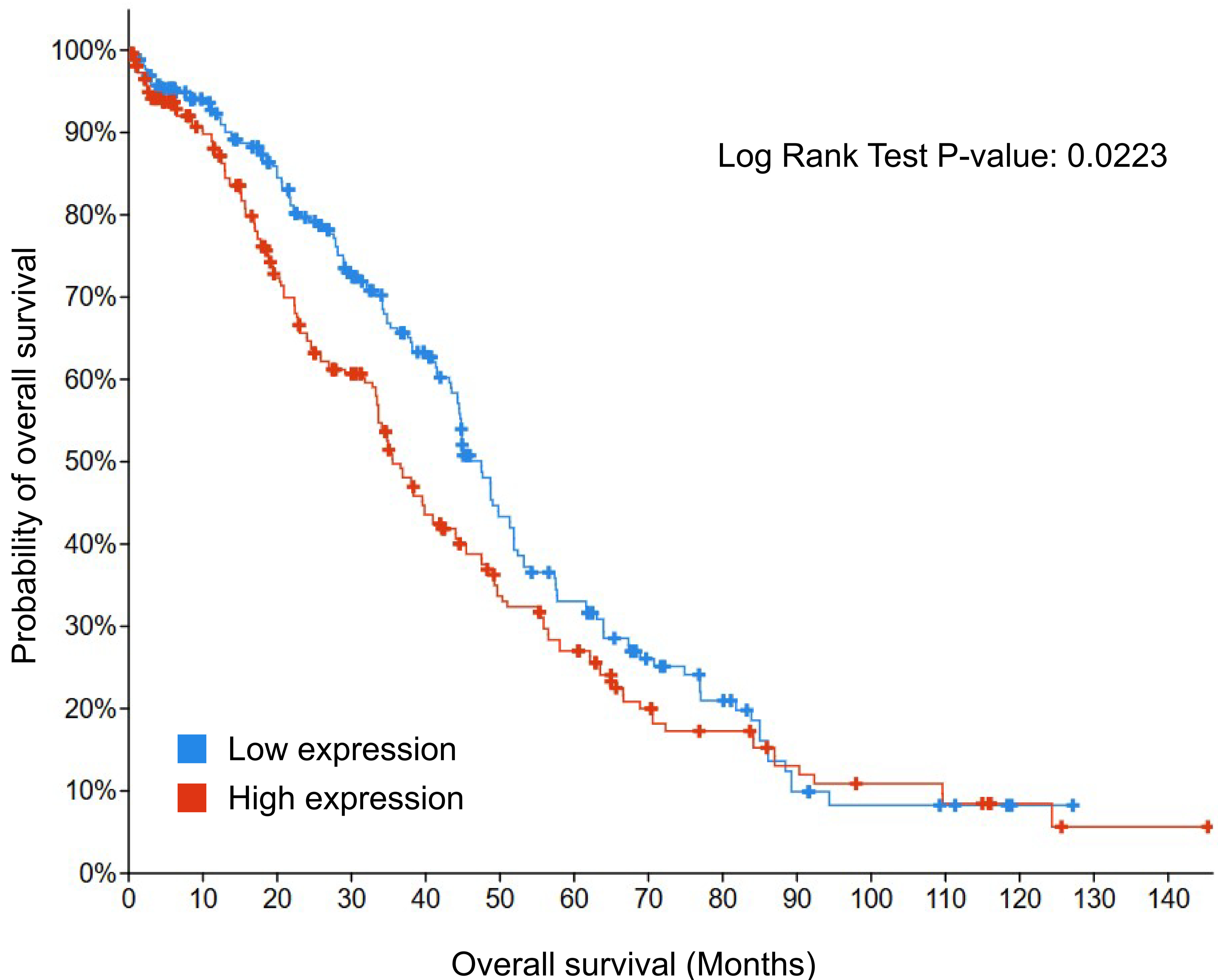
Supplementary Figure 2: The Cancer Genome Atlas (TCGA)

Analysis. **5-year survival** curves for Ovarian Cancer patients divided into two groups (low vs. high ACAT1 expression) based on the optimal cut-off value for survival. Information was obtained from the public database available at <https://www.proteinatlas.org>



Supplementary Figure 3: cBioPortal database analysis. *Overall survival* curves for Ovarian Cancer patients divided into different ACAT1 gene expression groups based on quartiles. Information was obtained from the public database available at

<https://www.cbioportal.org>



	Number of Cases	Number of Events	Median Months Overall (95% CI)
Low expression (-0.87-0.02)	260	146	47.50 (44.51 - 51.87)
High expression (0.02-0.63)	260	165	35.55 (33.64 - 41.98)