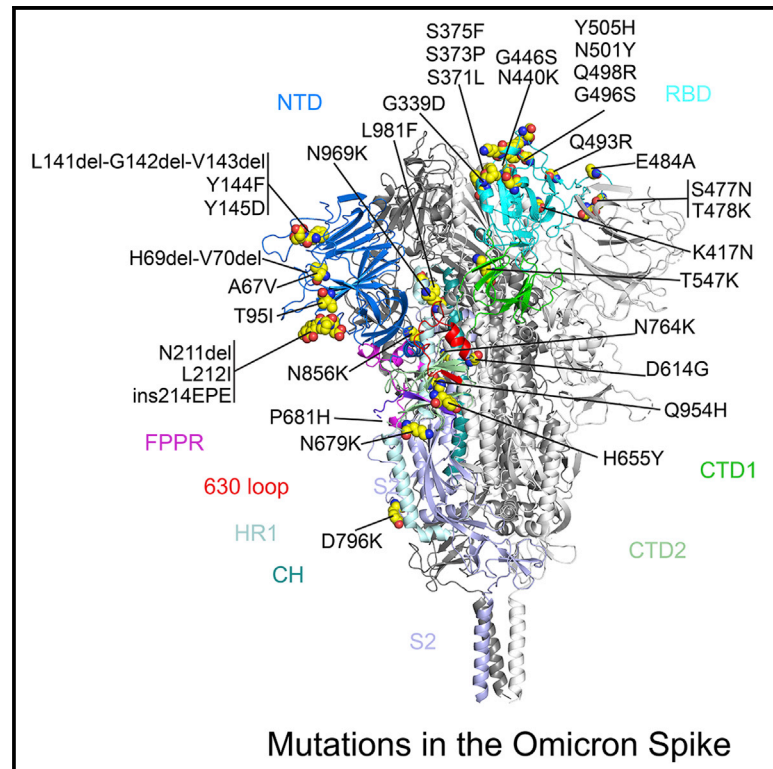


Structural and functional impact by SARS-CoV-2 Omicron spike mutations

Graphical abstract



Authors

Jun Zhang, Yongfei Cai,
Christy L. Lavine, ..., Jianming Lu,
Tianshu Xiao, Bing Chen

Correspondence

xiao@crystal.harvard.edu (T.X.),
bchen@crystal.harvard.edu (B.C.)

In brief

Zhang et al. report that SARS-CoV-2 Omicron variant has an unusually high number of mutations in its spike (S), which requires a high level of host receptor ACE2 for efficient membrane fusion, thereby compromising its fusogenic capability. Mutations remodel the S antigenic structure, causing remarkable resistance to neutralizing antibodies.

Highlights

- Omicron spike requires a high level of ACE2 for efficient membrane fusion
- Mutations in Omicron remodel the antigenic surfaces of the spike trimer
- Excessive mutations may have compromised fusogenic capability of Omicron spike



Article

Structural and functional impact by SARS-CoV-2 Omicron spike mutations

Jun Zhang,^{1,2,12} Yongfei Cai,^{1,2} Christy L. Lavine,³ Hanqin Peng,¹ Haisun Zhu,⁴ Krishna Anand,⁴ Pei Tong,^{5,10} Avneesh Gautam,^{5,10} Megan L. Mayer,^{6,7} Sophia Rits-Volloch,¹ Shaowei Wang,⁸ Piotr Sliz,^{1,2} Duane R. Wesemann,^{5,10} Wei Yang,^{4,11} Michael S. Seaman,³ Jianming Lu,^{8,9} Tianshu Xiao,^{1,2,12,*} and Bing Chen^{1,2,13,*}

¹Division of Molecular Medicine, Boston Children's Hospital, 3 Blackfan Street, Boston, MA 02115, USA

²Department of Pediatrics, Harvard Medical School, 3 Blackfan Street, Boston, MA 02115, USA

³Center for Virology and Vaccine Research, Beth Israel Deaconess Medical Center, 330 Brookline Avenue, Boston, MA 02215, USA

⁴Institute for Protein Innovation, Harvard Institutes of Medicine, 4 Blackfan Circle, Boston, MA 02115, USA

⁵Division of Allergy and Clinical Immunology, Department of Medicine, Brigham and Women's Hospital, Boston, MA 02115, USA

⁶The Harvard Cryo-EM Center for Structural Biology, 250 Longwood Avenue, Boston, MA 02115, USA

⁷Department of Biological Chemistry and Molecular Pharmacology, Harvard Medical School, 240 Longwood Avenue, Boston, MA 02115, USA

⁸Codex BioSolutions, Inc., 12358 Parklawn Drive, Rockville, MD 20852, USA

⁹Department of Biochemistry and Molecular and Cellular Biology, Georgetown University School of Medicine, 3900 Reservoir Road NW, Washington, DC 20057, USA

¹⁰Ragon Institute of MGH, MIT and Harvard, Cambridge, MA 02139, USA

¹¹Present address: GV20 Therapeutics LLC, 1 Broadway Floor 14, Cambridge, MA 02142, USA

¹²These authors contributed equally

¹³Lead contact

*Correspondence: xiao@crystal.harvard.edu (T.X.), bchen@crystal.harvard.edu (B.C.)

<https://doi.org/10.1016/j.celrep.2022.110729>

SUMMARY

The Omicron variant of severe acute respiratory syndrome coronavirus 2 (SARS-CoV-2), bearing an unusually high number of mutations, has become a dominant strain in many countries within several weeks. We report here structural, functional, and antigenic properties of its full-length spike (S) protein with a native sequence in comparison with those of previously prevalent variants. Omicron S requires a substantially higher level of host receptor ACE2 for efficient membrane fusion than other variants, possibly explaining its unexpected cellular tropism. Mutations not only remodel the antigenic structure of the N-terminal domain of the S protein but also alter the surface of the receptor-binding domain in a way not seen in other variants, consistent with its remarkable resistance to neutralizing antibodies. These results suggest that Omicron S has acquired an extraordinary ability to evade host immunity by excessive mutations, which also compromise its fusogenic capability.

INTRODUCTION

Multiple waves of coronavirus disease 2019 (COVID-19) cases have been driven primarily by emergence of new variants of severe acute respiratory syndrome coronavirus 2 (SARS-CoV-2) since its initial outbreak. The latest surge of new infections is caused by the Omicron variant (Organization, 2021), which has acquired an unusually large number of mutations, particularly in its spike (S) protein (~40 residue changes versus 10 on average in all the previous dominant variants; Harvey et al., 2021). This variant, first detected in South Africa and Botswana (also known as lineage B.1.1.529), was designated as a variant of concern (VOC) by the World Health Organization in 2 days and has outcompeted the previously most contagious variant—Delta—in many countries within 2 to 3 weeks. Omicron appears to be much more transmissible than all other variants, as manifested by the sharp increase of new cases in different places (Grabowski et al., 2021; Viana et al., 2021) and by early evidence showing that this variant replicates ~70 times faster than

previous variants in the bronchi tissue (but >10 times less efficient in lung tissue; Chan, 2022). The variant appears to cause only attenuated infection and lung disease in rodents (Halfmann et al., 2022), consistent with the earlier reports that most Omicron cases are generally mild in humans (Ulloa et al., 2022; Wolter et al., 2021). Not surprisingly, it has a remarkable ability to evade host immunity generated by either vaccination of the first-generation vaccines or natural infection from previous variants (Cameroni et al., 2021; Cao et al., 2021; Cele et al., 2021; Liu et al., 2021; Planas et al., 2021), in agreement with a large volume of breakthrough infection and reinfection cases (Altarawneh et al., 2022; Christensen et al., 2022; Goga et al., 2021; Pulliam et al., 2021). It is critical to understand the molecular mechanisms of these extraordinary behaviors of the Omicron variant to tailor effective strategies for controlling its spread.

SARS-CoV-2 is an enveloped positive-stranded RNA virus that can infect a host cell after the virus-encoded trimeric spike (S) protein engages the cellular receptor angiotensin-converting enzyme 2 (ACE2) and induces fusion of the viral and target cell



membranes. The S protein is first synthesized as a single-chain precursor and subsequently cleaved by a host furin-like protease into the receptor-binding fragment S1 and the fusion fragment S2 (Figure S1; Bosch et al., 2003); three copies of each fragment form a noncovalently associated complex as the mature viral spike. After binding to ACE2 on the host cell surface, the S protein is further cleaved in S2 (S2' site; Figure S1) by another cellular protease, either TMPRSS2 or cathepsins B and L (CatB/L) (Hoffmann et al., 2020), prompting dissociation of S1 and a series of conformational changes in S2. The large structural rearrangements of S2 drive the fusion of viral and cell membranes, thereby delivering the viral genome into the host cell to initiate infection (Jackson et al., 2022; Millet and Whittaker, 2014; Tortorici and Veesler, 2019). S1 contains four domains—N-terminal domain (NTD), receptor-binding domain (RBD), and two C-terminal domains (CTDs)—and three copies of S1 wrap around the central helical-bundle structure formed by the prefusion S2 trimer on the surface of virion. The RBD fluctuates between a “down” conformation for a receptor-inaccessible state or an “up” conformation for a receptor-accessible state (Wrapp et al., 2020), effectively engaging the receptor while protecting the receptor-binding site from the host immune system (Shang et al., 2020; Wrapp et al., 2020).

Several structural studies using the stabilized, soluble ectodomain constructs of the Omicron S protein have shown how its mutations modify the antigenic surfaces and how the mutated RBD interacts with ACE2 and monoclonal antibodies in atomic details (Cerutti et al., 2021; Cui et al., 2021; Mannar et al., 2021; McCallum et al., 2021; Ni et al., 2021; Yin et al., 2021). Additional analyses suggest that the function of the Omicron spike is somehow attenuated in cell culture (Meng et al., 2021; Zeng et al., 2021). In this work, we have characterized the full-length S protein of the Omicron variant and determined its structures with a native sequence by cryogenic electron microscopy (cryo-EM). Comparison of the structure, function, and antigenicity of the Omicron S with those of the previously characterized variants (Cai et al., 2021) has given molecular insights into the latest fast-spreading form of SARS-CoV-2.

RESULTS

Omicron S requires a higher level of ACE2 than other variants for efficient membrane fusion

To characterize the full-length S protein derived from a natural isolate of Omicron variant (hCoV-19/South Africa/CERI-KRISP-K032233/2021; Figure S1), we transfected HEK293 cells with an Omicron S expression construct and compared its membrane fusion activity with that of the full-length S constructs from previous variants, including G614, Alpha, Beta, and Delta (Cai et al., 2021; Zhang et al., 2021a, 2021c). All S proteins expressed at comparable levels with the Omicron protein cleaved slightly less between S1 and S2 at 24 h posttransfection (Figure S2A), suggesting that the two mutations (N679K and P681H) in Omicron near the furin cleavage site do not enhance S protein processing. Under our standard assay conditions (Cai et al., 2020), the cells producing these S proteins fused efficiently with ACE2-expressing cells, except that the fusion activity of Omicron S was slightly less than other S proteins (Figure S2B).

To further test whether Omicron S could induce membrane fusion more efficiently than other variants to account for its rapid spread, we carried out a time course experiment with our standard cell-cell fusion assay with both S and ACE2 transfected at saturating levels (Figure 1A; Cai et al., 2020). As shown previously, there were no significant differences in the fusion activity among all other variants (Cai et al., 2021; Zhang et al., 2021c), but the Omicron S again showed a slightly lower activity throughout the time period tested (Figure 1A). When using HEK293 cells, which express a minimal level of endogenous ACE2, as the target cells, all other variants (particularly Delta) had significant fusion activities at later time points, while the Omicron S remained inactive (Figure 1B), suggesting that Omicron S was unable to use low levels of ACE to enter host cells. We next tested HEK293 cells transfected with different amounts of ACE2. As shown in Figure 1C, all variants responded to an increased level of ACE2, but the Omicron S lagged behind the other variants and required an almost 10 times higher level of ACE2 to reach a similar fusion activity. The same pattern was also observed when the S-producing cells were cotransfected with a furin expression construct and/or the target cells cotransfected with TMPRSS2 (Figures 1D, S3A, and S3B). We also performed a similar time course experiment using murine leukemia virus (MLV)-based pseudoviruses expressing the S constructs with the cytoplasmic tail deleted (Zhang et al., 2021c). The Delta variant and one of its sublineage variants AY.4 infected the ACE2-expressing target cells much more rapidly in the early time period than did any other variant, consistent with our previous results (Zhang et al., 2021c). The Omicron pseudoviruses, produced either in the absence or in the presence of overexpression of furin, showed faster kinetics of infection than G614 but still substantially slower than the Delta variants in the early time period (Figure S3C).

These results together suggest that the Omicron S requires higher levels of the receptor ACE2 for efficient membrane fusion and that it has not gained any obvious advantages in its fusogenicity, as compared with other prevalent variants.

Biochemical and antigenic properties of the intact Omicron S protein

To produce the full-length Omicron S protein without any stabilizing modifications, we used a C-terminal strep-tagged construct for expression (Figure S4A) and purified the protein under the identical conditions established for producing other intact S proteins (Cai et al., 2020, 2021; Zhang et al., 2021a). By gel filtration chromatography, the purified Wuhan-Hu-1 S protein can be resolved in three distinct peaks, corresponding to the prefusion S trimer, postfusion S2 trimer, and dissociated S1 monomer, respectively, while the G614 S protein elutes as a single peak of the prefusion trimer with no obvious dissociated S1 and S2 (Figure S4B; Cai et al., 2020; Zhang et al., 2021a). Although the Omicron protein also eluted in one major peak corresponding to the prefusion trimer, there was a significant amount of aggregate on the leading side and also a shoulder on the trailing side, suggesting that the Omicron protein is less stable than the G614 trimer (Figure S4B). SDS-PAGE analysis showed that a large fraction of the protein remained uncleaved at the time when the transfected cells were harvested ~84 h

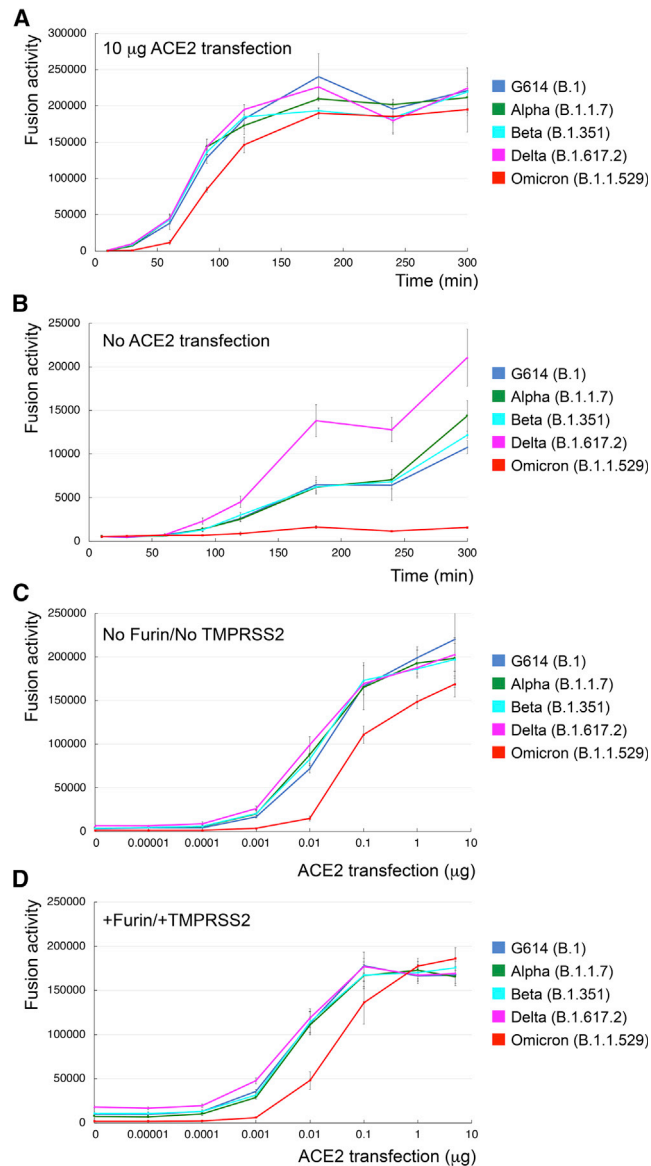


Figure 1. Requirement of higher levels of ACE2 for efficient membrane fusion by the Omicron spike

(A) Time course of cell-cell fusion mediated by various full-length S proteins, as indicated, with the target HEK293 cells transfected with 10 µg ACE2. (B) Time course of cell-cell fusion mediated by various full-length S proteins, as indicated, using HEK293 cells without exogenous ACE2. (C) Cell-cell fusion mediated by various full-length S proteins with HEK293 cells transfected with various levels (0–5 µg) of the ACE2 expression construct. (D) Cell-cell fusion mediated by various full-length S proteins expressed in HEK293 cells cotransfected with 5 µg furin expression construct and the ACE2-expressing target cells cotransfected with 5 µg TMPRSS2 expression construct. The experiments were performed in triplicates and repeated at least twice, with independent samples giving similar results. Error bars indicate the standard deviation calculated by the Excel STDEV function.

posttransfection (Figure S4B), indicating that the furin cleavage for the Omicron variant is indeed not very efficient, consistent with the observations reported by others (Meng et al., 2021;

Zeng et al., 2021). These data indicate that the two mutations in Omicron S near the furin site have reduced the proteolytic cleavage, which has been shown to be critical for enhanced viral infectivity and pathogenesis (Johnson et al., 2021; Peacock et al., 2021).

To analyze receptor-binding and antigenic properties of the prefusion Omicron S trimer, we compared its binding to soluble ACE2 proteins and S-directed monoclonal antibodies with that of the G614 trimer by bio-layer interferometry (BLI). The selected antibodies, isolated from COVID-19 convalescent individuals and also used for characterizing previous variants (Cai et al., 2021; Zhang et al., 2021c), target distinct epitopic regions on the S trimer, as defined by competing groups designated RBD-1, RBD-2, RBD-3, NTD-1, NTD-2, and S2 (Figure S5A; Tong et al., 2021). Those from the NTD-2 and S2 groups are largely non-neutralizing. The Omicron variant bound substantially more strongly to the receptor than did the G614 trimer, regardless of the ACE2 oligomeric state (Figures 2 and S5B; Table S1), suggesting that the mutations in the RBD of Omicron S have increased receptor binding affinity and could in principle enhance the Omicron infectivity.

The selected monoclonal antibodies bind the G614 S trimer with reasonable affinities, as documented previously (Cai et al., 2021; Zhang et al., 2021c). The Omicron variant completely lost binding to both the NTD-1 antibodies, 12C9 and C83B6; both the RBD-2 antibodies, G32B6 and C12A2; and the non-neutralizing anti-S2 antibody C163E6 and showed barely detectable binding to the RBD-1 antibody 63C8 (Figures 2 and S5B; Table S1). Its affinities for the RBD-3 antibody C63C7 and the non-neutralizing NTD-2 antibody C81D6 were the same or even higher than those of the G614 trimer. The BLI data were also largely confirmed by the binding results with the membrane-bound S trimers measured by flow cytometry (Figure S6).

We also measured the neutralization potency of these antibodies and of a designed trimeric ACE2 (Xiao et al., 2021) against infection by the Omicron variant in an HIV-based pseudovirus assay. The Omicron variant was completely resistant to almost all selected antibodies, except for the RBD-3 antibody C63C7 that neutralized very weakly (Table S2), in agreement with their binding affinity for the membrane-bound or purified S proteins, as well as the results reported by others (Cameroni et al., 2021; Cao et al., 2021; Cele et al., 2021; Liu et al., 2021; Planas et al., 2021). The two non-neutralizing antibodies, C81D6 and C163E6, did not neutralize the pseudoviruses, as expected. In contrast, the trimeric ACE2 is significantly more potent against the Omicron variant than the G614, consistent with the increased receptor binding by Omicron.

Overall structure of the full-length S trimer of the Omicron variant

We next determined the cryo-EM structures of the full-length Omicron S trimer with the unmodified sequence. cryo-EM images were acquired on a Titan Krios electron microscope equipped with a Gatan K3 direct electron detector. We used crYOLO (Wagner et al., 2019) for particle picking and RELION (Scheres, 2012) for two-dimensional (2D) classification, three dimensional (3D) classification, and refinement (Figures S7 and S8). 3D classification gave three distinct classes for the Omicron S trimer,

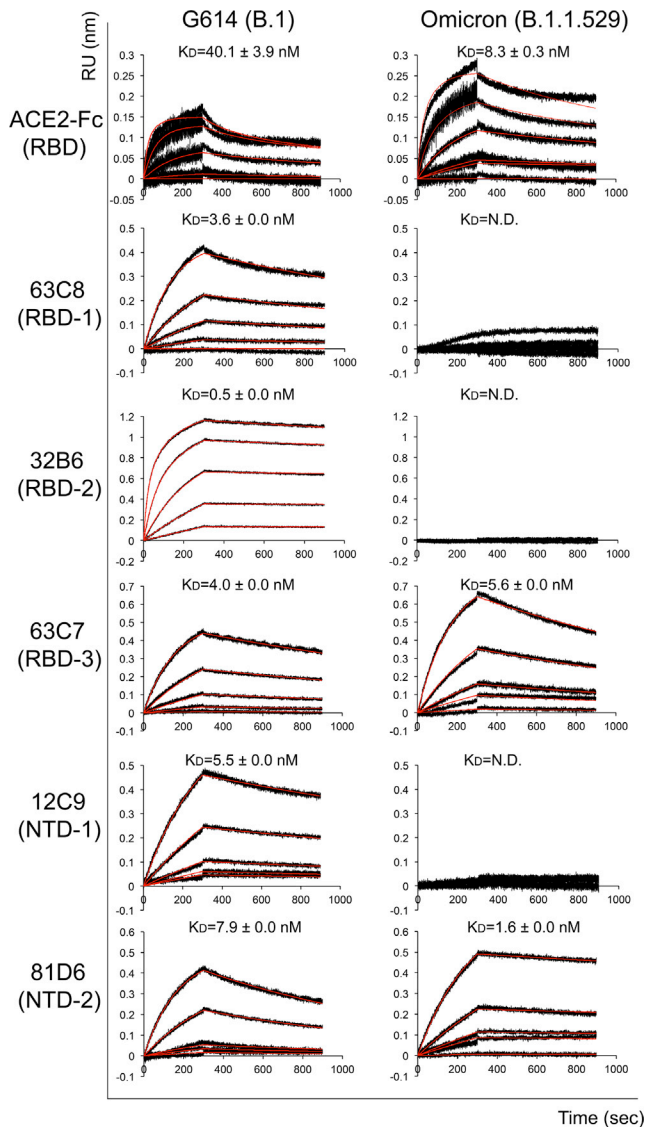


Figure 2. Antigenic properties of the purified full-length Omicron S protein

Bio-layer interferometry (BLI) analysis of the association of prefusion S trimers derived from the G614 “parent” strain (B.1) and Omicron (B.1.1.529) variant with a soluble dimeric ACE2 construct and with a panel of antibodies representing five epitopic regions on the RBD and NTD (see Figure S5A and Tong et al., 2021). For ACE2 binding, purified ACE2 protein was immobilized to AR2G biosensors and dipped into the wells containing each purified S protein at various concentrations. For antibody binding, various antibodies were immobilized to anti-human immunoglobulin G (IgG) Fc capture (AHC) biosensors and dipped into the wells containing each purified S protein at different concentrations. Binding kinetics were evaluated using a 1:1 Langmuir model except for dimeric ACE2 and antibody G32B6 targeting the RBD-2, which were analyzed by a bivalent binding model. The sensorgrams are in black and the fits in red. Binding constants highlighted by underlines were estimated by steady-state analysis as described in the STAR Methods. Binding constants are also summarized here and in Table S1. N.D., not determined; RU, response unit. All experiments were repeated at least twice with essentially identical results.

representing the closed, three-RBD-down prefusion conformation and a one-RBD-up conformation, as well as an RBD-intermediate conformation that was also found for the G614 trimer (Zhang et al., 2021a). These classes were further refined to 3.1–4.3 Å resolution, and we modeled the closed and one-RBD-up conformations (Figures S7, S8, and S9; Table S3).

Similar to other variants, there are no major differences in the overall architecture between the full-length Omicron S protein and the G614 S trimer in the corresponding conformation (Figures 3A and 3B; Zhang et al., 2021a). In the closed, three-RBD-down conformation, the NTD, RBD, CTD1, and CTD2 of S1 wrap around the S2 trimer. In the one-RBD-up conformation, the central helical core structure of S2 was preserved despite the flip-up movement of the RBD, which opened up the S1 trimer by shifting two adjacent NTDs away from the 3-fold axis of the trimer. Noticeably, additional residues near the furin cleavage site at the S1/S2 boundary (residues 682–685), largely disordered in the previous variants (Cai et al., 2020, 2021; Zhang et al., 2021a, 2021c), became structured probably due to the N679K mutation since the sidechain of Lys679 could make some contacts with the nearby CTD-2 (Figure S10). The reduced flexibility of the cleavage site could slow down its docking into the furin active site, thereby decreasing the cleavage efficiency in the Omicron S. The nearby mutation H655Y, not part of the furin site and also present in the Gamma variant, did not lead to any obvious structural changes (Figure S10), but changing its interaction with Phe643 in the CTD-2 from cation- π or hydrogen- π to π - π stacking could help destabilize the domain to some extent (Liao et al., 2013).

Our previous studies indicate that the fusion peptide proximal region (FPPR) (residues 828–853) and 630 loop (residues 620–640) are control elements and their positions may modulate the RBD movement and thereby the kinetics of the S structural rearrangements (Cai et al., 2020; Zhang et al., 2021a, 2021b). The RBD up movement apparently pushes the FPPR and 630 loop out of their original positions in the closed conformation, making them invisible in cryo-EM maps. In the three-RBD-down conformation of the Omicron trimer (Figure 3C), the configurations of the FPPR and 630 loop are identical to the distribution observed in the G614 trimer, and they are all structured. In the one-RBD-up conformation of the G614 trimer, only one of the FPPR and 630-loop pair is ordered (Zhang et al., 2021a). Unexpectedly, all three FPPRs and two 630 loops in the one-RBD-up Omicron trimer remain structured and largely maintain their positions found in the RBD-down conformation; only the 630 loop immediately next to the RBD in the up conformation became partially disordered (Figure 3D). The mutation N856K has apparently created a salt bridge between the FPPR (Lys856) and the CTD-1 (Asp568) of the neighboring protomer (Figure 3D), stabilizing the FPPR even when the RBD above it adopted an up-conformation. As a result, the flipped RBD together with the CTD-1 from the same protomer had to move up by 3 to 4 Å in order to avoid clashes with the FPPR underneath, probably also leaving more space for the 630 loop (Figure S11).

Density for the N-linked glycan at residue Asn343 in the RBD has rotated up almost by 90° in the Omicron map, as compared with that of the G614 and Delta trimers (Figure S12A). The distal end of the glycan was found to make contacts with the

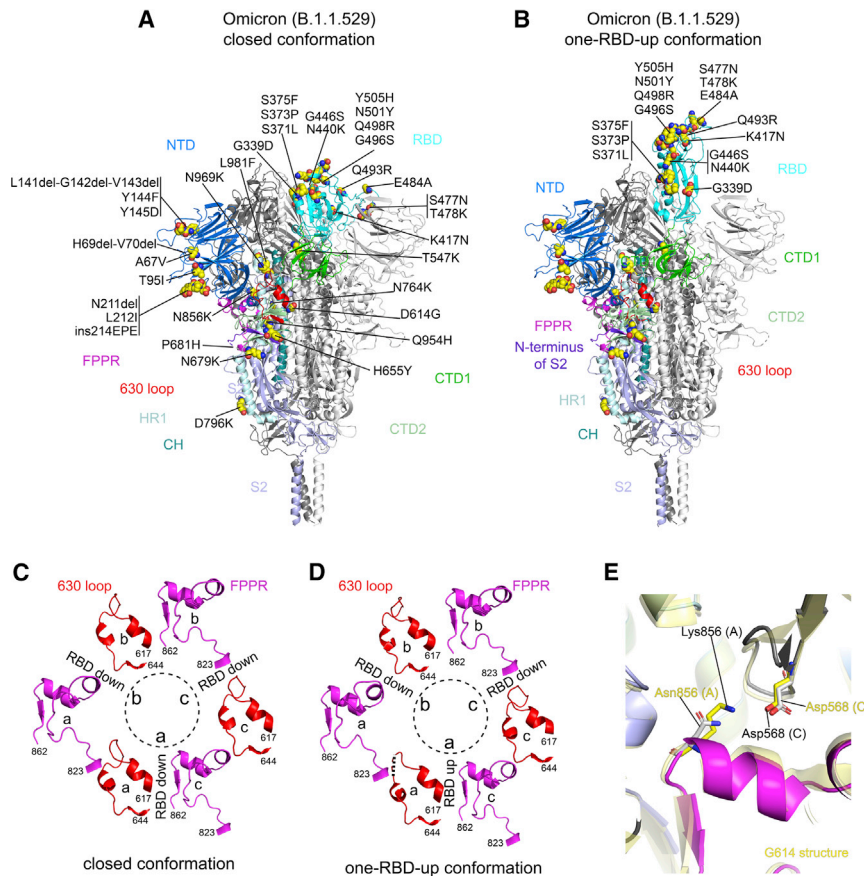


Figure 3. cryo-EM structures of the full-length Omicron S protein

(A) The structure of the closed prefusion conformation of the Omicron S trimer is shown in ribbon diagram with one protomer colored as NTD in blue, RBD in cyan, CTD1 in green, CTD2 in light green, S2 in light blue, the 630 loop in red, FPPR in magenta, HR1 in light blue, CH in teal, and the N-terminal segment of S2 in purple. All mutations in the Omicron variant, as compared with the original virus (Wuhan-Hu-1), are highlighted in sphere model.

(B) The structure of the one-RBD-up conformation of the Omicron S trimer.

(C) Structures, in the Omicron closed conformation, of segments (residues 617–644) containing the 630 loop (red) and segments (residues 823–862) containing the FPPR (magenta) from each of the three protomers (a–c). The position of each RBD is indicated. Dashed lines indicate gaps in the chain trace (disordered loops).

(D) Structures, in the Omicron one-RBD-up conformation, of segments (residues 617–644) containing the 630 loop (red) and segments (residues 823–862) containing the FPPR (magenta) from each of the three protomers (a–c).

(E) Superposition of the structure of the Omicron S trimer in various colors with that of the G614 trimer in yellow aligned by S2, showing the region near the mutation N856K.

neighboring RBD, helping clamp down the three RBDs in the closed conformation of the Delta trimer. Shifting away the N343-glycan would weaken the packing between the neighboring RBDs, at least partially accounting for the slight outward movement of all three RBDs in the Omicron trimer (Figure S12B).

Structural consequences of mutations in the Omicron variant

The overall structure of the RBD has changed little between the Omicron and G614 trimers (Figure 4A), except for a small shift of a short helix (residues 365–371; Figure 4B). The surface along the receptor-binding motif (RBM) exposed in the closed conformation, which includes the ACE2-binding interface and many antibody epitopes from the RBD-1 and RBD-2 groups (Figure S4A), has been modified by the large number of mutations however. N501Y is present in the previous variants and has been shown to enhance ACE2 affinity by making additional contacts (Tian et al., 2021). Mutations Q493R and Q498R can create salt bridges with residues from ACE2, as confirmed by recent studies (Cui et al., 2021; Mannar et al., 2021; McCallum et al., 2021; Yin et al., 2021). K417N and E484A (or some forms) are also found in other variants, and they may reduce the ACE2 affinity because of loss of ionic interactions with the receptor (Cai et al., 2021; Gobeil et al., 2021). In combination, these mutations may be responsible for the observed increase in the receptor binding reported here and by others (Cui et al., 2021; Mannar et al., 2021; Yin et al., 2021).

Three mutations, S477N, T478K, and E484A, in the tip of the RBM, possibly together with K417N, can probably account for loss of binding and neutralization of the Omicron variant by antibodies that target the RBD-2 epitopes. Other mutations, such as G339, N440K, G446S, Q493R, G486S, Q498R, and Y505H, all aligned near the RBD-1 epitopes, are probably responsible for resistance to the antibodies of this group. There are few mutations near the RBD-3 epitopes (the “so-called cryptic site”), explaining why C63C7 retained its binding to the Omicron S.

The mutation S373P may have rigidified the local polypeptide chain, causing an inward shift of the helix formed by residues 365–371, which in turn led to a large rotation of the N-linked glycan at Asn343 (Figures 4B and S12A). Both the shift of the helix and the glycan would lose contacts with the RBD from the neighboring protomer and relax the inter-RBD packing, although these interactions may not be functionally critical because the density of the distal end of N343-glycan in the G614 map is weaker than that in the Delta trimer (Figure S12A).

When the structures of the Omicron and G614 S trimers in the closed conformation were superposed by the S2 region, the most prominent differences were in the NTD (Figure S12B), which contains five point mutations (A67V, T95I, Y144F, Y145D, and L212I), three deletions (H69del-V70del, L141del-G142del-V143del, and N211del) and one three-residue insertion (ins214EPE). When the two NTDs were aligned (Figures 4C and 4D), we could see that these mutations had reconfigured the N-terminal segment and almost all the surface-exposed loops, including the 143–154, 173–187, 210–217, and 245–260 loops.

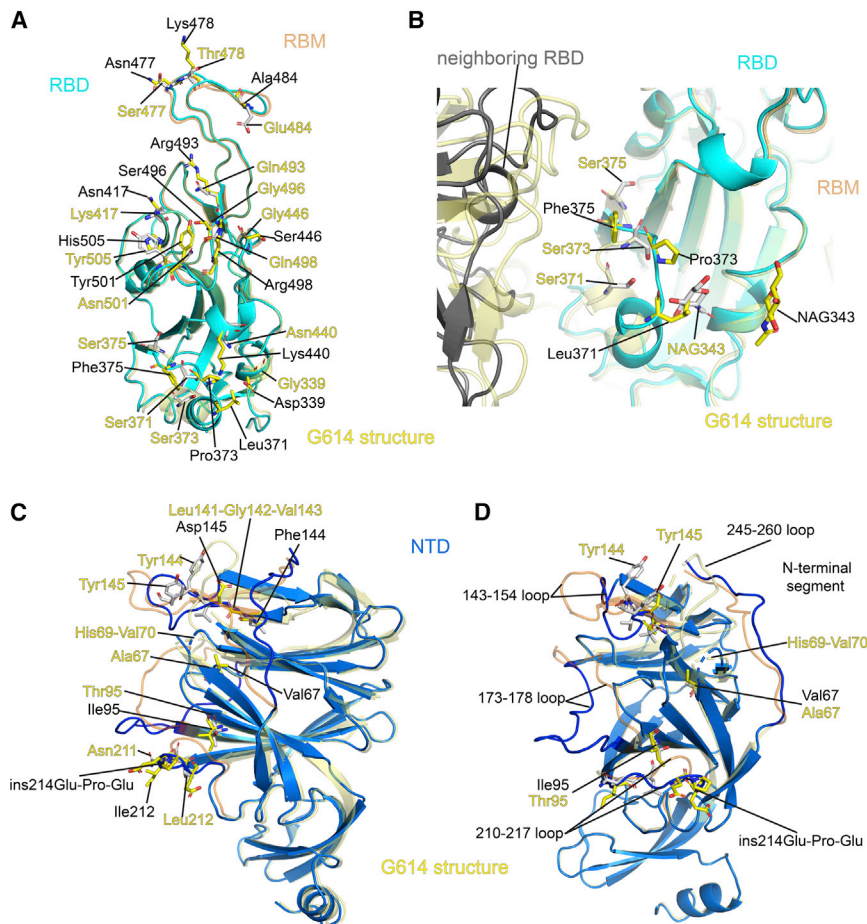


Figure 4. Structural impact of the mutations in the Omicron S

(A) Superposition of the RBD structure of the Omicron S trimer in cyan with the RBD of the G614 S trimer in yellow. Locations of all 15 mutations in the RBD are indicated, and these residues are shown in stick model. The receptor-binding motif (RBM) is colored in orange in the G614 structure.

(B) A close-up view of the RBD superposition in (A) to show the region near the mutations S371L, S373P, and S375F, including part of the neighboring RBD from another protomer. The mutated residues and the N-linked glycans at Asn343 are in stick model. NAG, N-acetylglucosamine.

(C) Superposition of the NTD structure of the Omicron S trimer in blue with the NTD of the G614 S trimer in yellow. Locations of mutations A67V, T95I, Y144F, Y145D, and L212I; deletions H69del-V70del, L141del-G142del-V143del, and N211del; and an insertion ins214EPE are indicated, and these residues are shown in stick model. The N-terminal segment, 143–154, 173–187, 210–217, and 245–260 loops are rearranged between the two structures and highlighted in darker colors.

(D) Another view of superposition of the NTD structure of the Omicron S trimer in blue with the NTD of the G614 S trimer in yellow.

Many of the loops form important parts of the neutralizing epitopes in the NTD (Chi et al., 2020). Thus, these structural changes, substantially different from those found in the previous variants, have once again drastically altered the antigenic surface of the NTD in a different way, accounting for the loss of binding and neutralization by NTD-1 antibodies (Figures 2 and S5; Table S2). It is unclear why the affinity by the NTD-2 antibody C81D6 has increased, as its epitope has not been defined structurally.

Finally, the rest of the mutations, including N764K, D796Y, Q954H, N969K, and L891F, did not lead to any obvious structural changes (Figures S13A–S13D), at least in these prefusion conformations, even though some of them are non-conservative changes.

DISCUSSION

New variants, such as Omicron, may continue to emerge from the worldwide spread of SARS-CoV-2, because the virus has to evolve in order to survive under the selective pressure exerted by increasingly prevalent host immunity from either natural infection or vaccination at the population level. How the Omicron has acquired a much larger number of mutations than all other previous variants is unknown, although origins from immune-compromised individuals or even animals have

the Omicron S protein fits the classical description in which an excessively mutated virus has to compromise its fitness in exchange for the ability to evade host immunity, as its fusogenic capability appears to have been attenuated. We cannot rule out the possibility that the Omicron S under certain optimal conditions (e.g., combination of perfect levels of ACE2, furin, and TMPRSS2 or other co-receptors present in specific tissues), which have not been tested here, is more fusogenic than all other variants or that the viral replication is drastically increased by mutations outside of the spike gene. We have indeed observed increased binding of the Omicron S to the ACE2 receptor, consistent with the results reported by others (Cameroni et al., 2021; Cui et al., 2021; Meng et al., 2021; Yin et al., 2021), but it is puzzling why it consistently shows weaker membrane fusion activity and infectivity in the form of either authentic virus or pseudovirus (Meng et al., 2021; Zeng et al., 2021; Zhao et al., 2021). A key finding from our study is that the Omicron S is different in requiring a much higher level of ACE2 for efficient membrane fusion than all other variants tested. This observation can account for the reduced fusion activity when compared with other variants under the same conditions. It can also explain why Omicron replicates better in the upper respiratory tract than lung, as the former has much higher levels of ACE2 (Soni et al., 2021;

(Sungnak et al., 2020). The transition from the closed to the RBD-up conformation in an S trimer typically requires an order-disorder transition in the FPPR and 630 loop. The structured FPPRs and 630 loops found in the Omicron trimer, in particular with the one-RBD-up conformation, would substantially slow down the transition to two-RBD-up or three-RBD-up conformations, which may be the key trigger for S1 dissociation and S2 refolding required for driving the membrane fusion process. The added kinetic barriers by the structured FPPR and 630 loop would need a higher concentration of ACE2 to overcome. We note that these two structural elements are disordered in many previous structural studies using the stabilized soluble S trimer constructs, which could not provide information regarding the conformational changes of the FPPR and 630 loop in response to the RBD movement.

If the Omicron S is indeed compromised in its fusogenicity, how can we explain the unprecedented spreading of this variant? First, the extraordinary ability of Omicron to evade host immunity would drastically expand the susceptible population and it would be difficult to break the transmission chain until the immunity against Omicron can be rebuilt again by vaccination or infection. A recent study demonstrated that the household secondary attack rate by Omicron is similar to that by Delta among unvaccinated individuals but substantially higher in those fully vaccinated and booster vaccinated (Lyngse et al., 2021), suggesting that the rapid spread by Omicron may primarily be due to immune evasion rather than heightened transmissibility. Moreover, the viral loads from Omicron infection do not seem to be significantly higher than other variants (Adamson et al., 2022). Second, because the Omicron variant causes mainly mild disease, there might be a greater number of asymptomatic cases than the surges caused by the previous variants (Garrett et al., 2022), which could facilitate the spread by the apparently “healthy” individuals. Although another study suggested that the easy release of the fusion peptide may be responsible for the increased transmissibility of the Omicron spike (Gobeil et al., 2022), future studies are clearly needed to address this important question.

We suggested previously that the RBD is a better target for intervention because the NTD can be remodeled differently by different variants while the overall structure of the RBD has been strictly preserved (Zhang et al., 2021c). The Omicron structures further support this notion as this variant has also invented yet another way, including point mutations, deletions, and even an insertion, to modify the NTD, while the overall RBD structure has only a small change, even though ~8% of all RBD residues are mutated, but without any deletions or insertions. It appears that the virus must keep the RBD structure intact in order to maintain its ability to engage the receptor and its fitness. Indeed, neutralizing potency of certain anti-RBD antibodies (e.g., sotrovimab; Dejnirattisai et al., 2021) remains unchanged against the Omicron virus, raising the hope that broadly neutralizing therapeutic antibodies and next-generation vaccines can be developed against the RBD of SARS-CoV-2.

Limitations of the study

All our experiments were performed *in vitro*, and additional studies with authentic viruses will be needed to confirm our find-

ings in more clinically relevant settings. For example, our cryo-EM studies used the full-length Omicron spike protein purified in detergent, and there may still be subtle differences between our structures and those on the surface of virion. Moreover, the MLV- and HIV-based pseudoviruses were used to analyze viral infectivity and antibody neutralization; they may not fully recapitulate all the properties of the authentic virus of the Omicron variant. Finally, mutagenesis studies will help confirm the structural predictions regarding antibody resistance.

STAR★METHODS

Detailed methods are provided in the online version of this paper and include the following:

- KEY RESOURCES TABLE
- RESOURCE AVAILABILITY
 - Lead contact
 - Materials availability
 - Data and code availability
- EXPERIMENTAL MODEL AND SUBJECT DETAILS
- METHOD DETAILS
 - Expression constructs
 - Expression and purification of recombinant proteins
 - Western blot
 - Cell-cell fusion assay
 - Binding assay by bio-layer interferometry (BLI)
 - Flow cytometry
 - MLV-based pseudovirus assay
 - HIV-based pseudovirus assay
 - Cryo-EM sample preparation and data collection
 - Image processing and 3D reconstructions
 - Model building
- QUANTIFICATION AND STATISTICAL ANALYSIS

SUPPLEMENTAL INFORMATION

Supplemental information can be found online at <https://doi.org/10.1016/j.celrep.2022.110729>.

ACKNOWLEDGMENTS

We thank S. Rawson and the SBGrid team for computing support, computing resources from S. Harrison and J. Abraham, K. Arnett for support and advice on the BLI experiments, and S. Harrison and A. Carfi for critical reading of the manuscript. EM data were collected at the Harvard Cryo-EM Center for Structural Biology of Harvard Medical School. We acknowledge support for COVID-19-related structural biology research at Harvard from the Nancy Lurie Marks Family Foundation and the Massachusetts Consortium on Pathogen Readiness (MassCPR). This work was supported by Fast grants by Emergent Ventures (to B.C. and D.R.W.), COVID-19 Awards by Massachusetts Consortium on Pathogen Readiness (MassCPR) (to B.C., D.R.W., and M.S.S.), and NIH grants AI147884 (to B.C.), AI141002 (to B.C.), AI127193 (to B.C. and James Chou), and AI39538, AI165072, and AI169619 (to D.R.W.).

AUTHOR CONTRIBUTIONS

B.C., T.X., J.Z., and Y.C. conceived the project. Y.C. expressed and purified the full-length S proteins with help from H.P. T.X. designed and performed BLI and cell-cell fusion experiments. J.Z. prepared cryo-grids and performed EM data collection with contributions from M.L.M., processed the cryo-EM

data, and built and refined the atomic models. J.L. and S.W. created the Omicron expression construct and performed the neutralization assays using the MLV-based pseudoviruses. C.L.L. and M.S.S. performed the neutralization assays using the HIV-based pseudoviruses. H.Z., K.A., and W.Y. performed the flow cytometry experiments. P.T., A.G., and D.R.W. produced anti-S monoclonal antibodies. S.R.-V. contributed to cell culture and protein production. P.S. provided computational support. All authors analyzed the data. B.C., T.X., J.Z., and Y.C. wrote the manuscript with input from all other authors.

DECLARATION OF INTERESTS

W.Y. serves on the scientific advisory boards of Hummingbird Bioscience and GO Therapeutics and is currently an employee of GV20 Therapeutics LLC. All other authors declare no competing interests.

Received: February 22, 2022

Revised: March 9, 2022

Accepted: March 30, 2022

Published: April 11, 2022

REFERENCES

- Adams, P.D., Afonine, P.V., Bunkoczi, G., Chen, V.B., Davis, I.W., Echols, N., Headd, J.J., Hung, L.W., Kapral, G.J., Grosse-Kunstleve, R.W., et al. (2010). PHENIX: a comprehensive Python-based system for macromolecular structure solution. *Acta Crystallogr. D Biol. Crystallogr.* **66**, 213–221.
- Adamson, B., Sikka, R., Wyllie, A.L., and Premisrut, P. (2022). Discordant SARS-CoV-2 PCR and rapid antigen test results when infectious: a December 2021 occupational case series. Preprint at medRxiv. <https://doi.org/10.1101/2022.01.04.22268770>.
- Altarawneh, H., Chemaitelly, H., Tang, P., Hasan, M.R., Qassim, S., Ayoub, H.H., AlMukdad, S., Yassine, H.M., Benslimane, F.M., Khatib, H.A.A., et al. (2022). Protection afforded by prior infection against SARS-CoV-2 reinfection with the Omicron variant. Preprint at medRxiv. <https://doi.org/10.1101/2022.01.05.22268782>.
- Bosch, B.J., van der Zee, R., de Haan, C.A., and Rottier, P.J. (2003). The coronavirus spike protein is a class I virus fusion protein: structural and functional characterization of the fusion core complex. *J. Virol.* **77**, 8801–8811.
- Cai, Y., Zhang, J., Xiao, T., Lavine, C.L., Rawson, S., Peng, H., Zhu, H., Anand, K., Tong, P., Gautam, A., et al. (2021). Structural basis for enhanced infectivity and immune evasion of SARS-CoV-2 variants. *Science* **373**, 642–648.
- Cai, Y., Zhang, J., Xiao, T., Peng, H., Sterling, S.M., Walsh, R.M., Jr., Rawson, S., Rits-Volloch, S., and Chen, B. (2020). Distinct conformational states of SARS-CoV-2 spike protein. *Science* **369**, 1586–1592.
- Cameron, E., Saliba, C., Bowen, J.E., Rosen, L.E., Culap, K., Pinto, D., VanBlargan, L.A., De Marco, A., Zepeda, S.K., Julio, J.d., et al. (2021). Broadly neutralizing antibodies overcome SARS-CoV-2 Omicron antigenic shift. *Nature* **602**, 664–670.
- Cao, Y., Wang, J., Jian, F., Xiao, T., Song, W., Yisimayi, A., Huang, W., Li, Q., Wang, P., An, R., et al. (2021). Omicron escapes the majority of existing SARS-CoV-2 neutralizing antibodies. *Nature* **602**, 657–663.
- Cele, S., Jackson, L., Khoury, D.S., Khan, K., Moyo-Gwete, T., Tegally, H., San, J.E., Cromer, D., Scheepers, C., Amoako, D., et al. (2021). Omicron extensively but incompletely escapes Pfizer BNT162b2 neutralization. *Nature* **602**, 654–656.
- Cerutti, G., Guo, Y., Liu, L., Zhang, Z., Liu, L., Luo, Y., Huang, Y., Wang, H.H., Ho, D.D., Sheng, Z., et al. (2021). Structural basis for antibody resistance to SARS-CoV-2 omicron variant. Preprint at bioRxiv. <https://doi.org/10.1101/2021.12.21.473620>.
- Chan, M.C. (2022). HKUMed Finds Omicron SARS-CoV-2 Can Infect Faster and Better than Delta in Human Bronchus but with Less Severe Infection in Lung. <https://www.med.hku.hk/en/news/press/20211215-omicron-sars-cov-20211212-infection>.
- Chen, C.Z., Xu, M., Pradhan, M., Gorshkov, K., Petersen, J.D., Straus, M.R., Zhu, W., Shinn, P., Guo, H., Shen, M., et al. (2020). Identifying SARS-CoV-2 entry inhibitors through drug repurposing screens of SARS-S and MERS-S pseudotyped particles. *ACS Pharmacol. Transl. Sci.* **3**, 1165–1175.
- Chen, J., Kovacs, J.M., Peng, H., Rits-Volloch, S., Lu, J., Park, D., Zablowsky, E., Seaman, M.S., and Chen, B. (2015). HIV-1 ENVELOPE. Effect of the cytoplasmic domain on antigenic characteristics of HIV-1 envelope glycoprotein. *Science* **349**, 191–195.
- Chi, X., Yan, R., Zhang, J., Zhang, G., Zhang, Y., Hao, M., Zhang, Z., Fan, P., Dong, Y., Yang, Y., et al. (2020). A neutralizing human antibody binds to the N-terminal domain of the Spike protein of SARS-CoV-2. *Science* **369**, 650–655.
- Christensen, P.A., Olsen, R.J., Long, S.W., Snehal, R., Davis, J.J., Saavedra, M.O., Reppond, K., Shyer, M.N., Cambric, J., Gadd, R., et al. (2022). Early signals of significantly increased vaccine breakthrough, decreased hospitalization rates, and less severe disease in patients with COVID-19 caused by the Omicron variant of SARS-CoV-2 in Houston, Texas. Preprint at medRxiv. <https://doi.org/10.1101/2021.12.30.21268560>.
- Corey, L., Beyrer, C., Cohen, M.S., Michael, N.L., Bedford, T., and Rolland, M. (2021). SARS-CoV-2 variants in patients with immunosuppression. *N. Engl. J. Med.* **385**, 562–566.
- Croll, T.I. (2018). ISOLDE: a physically realistic environment for model building into low-resolution electron-density maps. *Acta Crystallogr. D Struct. Biol.* **74**, 519–530.
- Cui, Z., Liu, P., Wang, N., Wang, L., Fan, K., Zhu, Q., Wang, K., Chen, R., Feng, R., Jia, Z., et al. (2021). Structural and functional characterizations of altered infectivity and immune evasion of SARS-CoV-2 Omicron variant. Preprint at bioRxiv. <https://doi.org/10.1101/2021.12.29.474402>.
- Dejnirattisai, W., Huo, J., Zhou, D., Zahradnik, J., Supasa, P., Liu, C., Duyvesteyn, H.M.E., Ginn, H.M., Mentzer, A.J., Tuekprakhon, A., et al. (2021). Omicron-B.1.1.529 leads to widespread escape from neutralizing antibody responses. Preprint at bioRxiv. <https://doi.org/10.1101/2021.12.03.471045>.
- Emsley, P., Lohkamp, B., Scott, W.G., and Cowtan, K. (2010). Features and development of Coot. *Acta Crystallogr. D Biol. Crystallogr.* **66**, 486–501.
- Garrett, N., Tapley, A., Andriesen, J., Seocharan, I., Fisher, L.H., Bunts, L., Espy, N., Wallis, C.L., Randhawa, A.K., Ketter, N., et al. (2022). High rate of asymptomatic carriage associated with variant strain omicron. Preprint at medRxiv. <https://doi.org/10.1101/2021.12.20.21268130>.
- Gobeil, S.M., Janowska, K., McDowell, S., Mansouri, K., Parks, R., Stalls, V., Kopp, M.F., Manne, K., Li, D., Wiehe, K., et al. (2021). Effect of natural mutations of SARS-CoV-2 on spike structure, conformation, and antigenicity. *Science* **373**, eabi6226.
- Gobeil, S.M.-C., Henderson, R., Stalls, V., Janowska, K., Huang, X., May, A., Speakman, M., Beaudoin, E., Manne, K., Li, D., et al. (2022). Structural diversity of the SARS-CoV-2 Omicron spike. Preprint at bioRxiv. <https://doi.org/10.1101/2022.01.25.477784>.
- Goga, A., Bekker, L.-G., Garrett, N., Reddy, T., Yende-Zuma, N., Fairall, L., Moultrie, H., Takalani, A., Trivella, V., Faesen, M., et al. (2021). Breakthrough Covid-19 infections during periods of circulating Beta, Delta and Omicron variants of concern, among health care workers in the Sisonke Ad26.COVS vaccine trial, South Africa. Preprint at medRxiv. <https://doi.org/10.1101/2021.12.21.21268171>.
- Grabowski, F., Kochańczyk, M., and Lipniacki, T. (2021). Omicron strain spreads with the doubling time of 3.2–3.6 days in South Africa province of Gauteng that achieved herd immunity to Delta variant. Preprint at medRxiv. <https://doi.org/10.1101/2021.12.08.21267494>.
- Gupta, R. (2022). SARS-CoV-2 Omicron spike mediated immune escape and tropism shift. *Res. Sq.* rs.3.rs-1191837. <https://doi.org/10.21203/rs.3.rs-1191837/v1>.
- Halfmann, P.J., Iida, S., Iwatsuki-Horimoto, K., Maemura, T., Kiso, M., Scheaffer, S.M., Darling, T.L., Joshi, A., Loeber, S., Singh, G., et al. (2022). SARS-CoV-2 Omicron virus causes attenuated disease in mice and hamsters. *Nature* **603**, 687–692.

- Harvey, W.T., Carabelli, A.M., Jackson, B., Gupta, R.K., Thomson, E.C., Harrison, E.M., Ludden, C., Reeve, R., Rambaut, A., Consortium, C.-G.U., et al. (2021). SARS-CoV-2 variants, spike mutations and immune escape. *Nat. Rev. Microbiol.* **19**, 409–424.
- Hoffmann, M., Kleine-Weber, H., Schroeder, S., Kruger, N., Herrler, T., Erichsen, S., Schiergens, T.S., Herrler, G., Wu, N.H., Nitsche, A., et al. (2020). SARS-CoV-2 cell entry Depends on ACE2 and TMPRSS2 and is blocked by a clinically proven protease inhibitor. *Cell* **181**, 271–280.e8.
- Jackson, C.B., Farzan, M., Chen, B., and Choe, H. (2022). Mechanisms of SARS-CoV-2 entry into cells. *Nat. Rev. Mol. Cell Biol.* **23**, 3–20.
- Johnson, B.A., Xie, X., Bailey, A.L., Kalveram, B., Lokugamage, K.G., Muruato, A., Zou, J., Zhang, X., Juelich, T., Smith, J.K., et al. (2021). Loss of furin cleavage site attenuates SARS-CoV-2 pathogenesis. *Nature* **591**, 293–299.
- Kucukelbir, A., Sigworth, F.J., and Tagare, H.D. (2014). Quantifying the local resolution of cryo-EM density maps. *Nat. Methods* **11**, 63–65.
- Liao, S.M., Du, Q.S., Meng, J.Z., Pang, Z.W., and Huang, R.B. (2013). The multiple roles of histidine in protein interactions. *Chem. Cent. J.* **7**, 44.
- Liu, L., Iketani, S., Guo, Y., Chan, J.F.-W., Wang, M., Liu, L., Luo, Y., Chu, H., Huang, Y., Nair, M.S., et al. (2021). Striking antibody evasion manifested by the Omicron variant of SARS-CoV-2. *Nature* **602**, 676–681.
- Lynge, F.P., Mortensen, L.H., Denwood, M.J., Christiansen, L.E., Møller, C.H., Skov, R.L., Spiess, K., Fomsgaard, A., Lassaunière, M.M., Rasmussen, M., et al. (2021). SARS-CoV-2 omicron VOC transmission in Danish households. Preprint at medRxiv. <https://doi.org/10.1101/2021.12.27.21268278>.
- Mannar, D., Saville, J.W., Zhu, X., Srivastava, S.S., Berezuk, A.M., Tuttle, K.S., Marquez, C., Sekirov, I., and Subramaniam, S. (2021). SARS-CoV-2 omicron variant: ACE2 binding, cryo-EM structure of spike protein-ACE2 complex and antibody evasion. Preprint at bioRxiv. <https://doi.org/10.1101/2021.12.19.473380>.
- Mastrorade, D.N. (2005). Automated electron microscope tomography using robust prediction of specimen movements. *J. Struct. Biol.* **152**, 36–51.
- McCallum, M., Czudnochowski, N., Rosen, L.E., Zepeda, S.K., Bowen, J.E., Dillen, J.R., Powell, A., Croll, T., Nix, J., Virgin, H.W., et al. (2021). Structural basis of SARS-CoV-2 Omicron immune evasion and receptor engagement. Preprint at bioRxiv. <https://doi.org/10.1101/2021.12.28.474380>.
- Meng, B., Ferreira, I.A.T.M., Abdullahi, A., Saito, A., Kimura, I., Yamasoba, D., Kemp, S.A., Goonawardane, N., Papa, G., Fatihi, S., et al. (2021). SARS-CoV-2 Omicron spike mediated immune escape, infectivity and cell-cell fusion. Preprint at bioRxiv. <https://doi.org/10.1101/2021.12.17.473248>.
- Millet, J.K., and Whittaker, G.R. (2014). Host cell entry of Middle East respiratory syndrome coronavirus after two-step, furin-mediated activation of the spike protein. *Proc. Natl. Acad. Sci. U S A* **111**, 15214–15219.
- Millet, J.K., and Whittaker, G.R. (2016). Murine leukemia virus (MLV)-based coronavirus spike-pseudotyped particle production and infection. *Bio. Protoc.* **6**, e2035.
- Morin, A., Eisenbraun, B., Key, J., Sanschagrin, P.C., Timony, M.A., Ottaviano, M., and Sliz, P. (2013). Collaboration gets the most out of software. *Elife* **2**, e01456.
- Ni, D., Lau, K., Turelli, P., Raclot, C., Beckert, B., Nazarov, S., Pojer, F., Myasnikov, A., Stahlberg, H., and Trono, D. (2021). Structural analysis of the Spike of the Omicron SARS-COV-2 variant by Cryo-EM and implications for immune evasion. Preprint at bioRxiv. <https://doi.org/10.1101/2021.12.27.474250>.
- Organization, W.H. (2021). Classification of Omicron (B.1.1.529): SARS-CoV-2 Variant of Concern. [https://www.who.int/news/item/26-11-2021-classification-of-omicron-\(b.2021.2529\)-sars-cov-2022-variant-of-concern](https://www.who.int/news/item/26-11-2021-classification-of-omicron-(b.2021.2529)-sars-cov-2022-variant-of-concern).
- Peacock, T.P., Goldhill, D.H., Zhou, J., Bailion, L., Frise, R., Swann, O.C., Kugathasan, R., Penn, R., Brown, J.C., Sanchez-David, R.Y., et al. (2021). The furin cleavage site in the SARS-CoV-2 spike protein is required for transmission in ferrets. *Nat. Microbiol.* **6**, 899–909.
- Pettersen, E.F., Goddard, T.D., Huang, C.C., Couch, G.S., Greenblatt, D.M., Meng, E.C., and Ferrin, T.E. (2004). UCSF Chimera—a visualization system for exploratory research and analysis. *J. Comput. Chem.* **25**, 1605–1612. <https://doi.org/10.1002/jcc.20084>.
- Planas, D., Saunders, N., Maes, P., Guivel-Benhassine, F., Planchais, C., Buchrieser, J., Bolland, W.-H., Porrot, F., Staropoli, I., Lemoine, F., et al. (2021). Considerable escape of SARS-CoV-2 variant Omicron to antibody neutralization. *Nature* **602**, 671–675.
- Pulliam, J.R.C., van Schalkwyk, C., Govender, N., von Gottberg, A., Cohen, C., Groome, M.J., Dushoff, J., Mlisana, K., and Moultrie, H. (2021). Increased risk of SARS-CoV-2 reinfection associated with emergence of the Omicron variant in South Africa. Preprint at medRxiv. <https://doi.org/10.1101/2021.11.11.21266068>.
- Punjani, A., Rubinstein, J.L., Fleet, D.J., and Brubaker, M.A. (2017). cryo-SPARC: algorithms for rapid unsupervised cryo-EM structure determination. *Nat. Methods* **14**, 290–296.
- Scheres, S.H. (2012). RELION: implementation of a Bayesian approach to cryo-EM structure determination. *J. Struct. Biol.* **180**, 519–530.
- Sentis, C., Billaud, G., Bal, A., Frobert, E., Bouscambert, M., Destras, G., Josset, L., Lina, B., Morfin, F., Gaymard, A., et al. (2022). SARS-CoV-2 Omicron variant, lineage BA.1, is associated with lower viral load in nasopharyngeal samples compared to Delta variant. Preprint at medRxiv. <https://doi.org/10.1101/2022.02.02.22269653>.
- Shang, J., Wan, Y., Luo, C., Ye, G., Geng, Q., Auerbach, A., and Li, F. (2020). Cell entry mechanisms of SARS-CoV-2. *Proc. Natl. Acad. Sci. U S A* **117**, 11727–11734.
- Shuai, H., Chan, J.F., Hu, B., Chai, Y., Yuen, T.T., Yin, F., Huang, X., Yoon, C., Hu, J.C., Liu, H., et al. (2022). Attenuated replication and pathogenicity of SARS-CoV-2 B.1.1.529 Omicron. *Nature* **603**, 693–699.
- Soni, S., Jiang, Y., Tesfaigzi, Y., Hornick, J.L., and Cataltepe, S. (2021). Comparative analysis of ACE2 protein expression in rodent, non-human primate, and human respiratory tract at baseline and after injury: a conundrum for COVID-19 pathogenesis. *PLoS One* **16**, e0247510.
- Sungnak, W., Huang, N., Becavin, C., Berg, M., Queen, R., Litvinukova, M., Talavera-Lopez, C., Maatz, H., Reichart, D., Sampaziotis, F., et al. (2020). SARS-CoV-2 entry factors are highly expressed in nasal epithelial cells together with innate immune genes. *Nat. Med.* **26**, 681–687.
- Suzuki, R., Yamasoba, D., Kimura, I., Wang, L., Kishimoto, M., Ito, J., Morioka, Y., Nao, N., Nasser, H., Uriu, K., et al. (2022). Attenuated fusogenicity and pathogenicity of SARS-CoV-2 Omicron variant. *Nature* **603**, 700–705.
- Tian, F., Tong, B., Sun, L., Shi, S., Zheng, B., Wang, Z., Dong, X., and Zheng, P. (2021). N501Y mutation of spike protein in SARS-CoV-2 strengthens its binding to receptor ACE2. *Elife* **10**, e69091.
- Tong, P., Gautam, A., Windsor, I.W., Travers, M., Chen, Y., Garcia, N., Whiteman, N.B., McKay, L.G.A., Storm, N., Malsick, L.E., et al. (2021). Memory B cell repertoire for recognition of evolving SARS-CoV-2 spike. *Cell* **148**, 4969–4980.e15.
- Tortorici, M.A., and Veesler, D. (2019). Structural insights into coronavirus entry. *Adv. Virus Res.* **105**, 93–116.
- Ulloa, A.C., Buchan, S.A., Daneman, N., and Brown, K.A. (2022). Early estimates of SARS-CoV-2 Omicron variant severity based on a matched cohort study, Ontario, Canada. Preprint at medRxiv. <https://doi.org/10.1101/2021.12.24.21268382>.
- Viana, R., Moyo, S., Amoako, D.G., Tegally, H., Scheepers, C., Althaus, C.L., Anyaneji, U.J., Bester, P.A., Boni, M.F., Chand, M., et al. (2021). Rapid epidemic expansion of the SARS-CoV-2 Omicron variant in southern Africa. Preprint at medRxiv. <https://doi.org/10.1101/2021.12.19.21268028>.
- Wagner, T., Merino, F., Stabrin, M., Moriya, T., Antoni, C., Apelbaum, A., Hagel, P., Sitsel, O., Raisch, T., Prumbaum, D., et al. (2019). SPHIRE-crYOLO is a fast and accurate fully automated particle picker for cryo-EM. *Commun. Biol.* **2**, 218.
- Wei, C., Shan, K.J., Wang, W., Zhang, S., Huan, Q., and Qian, W. (2021). Evidence for a mouse origin of the SARS-CoV-2 Omicron variant. *J. Genet. Genom.* **48**, 1111–1121.
- Wolter, N., Jassat, W., Walaza, S., Welch, R., Moultrie, H., Groome, M., Amoako, D.G., Everatt, J., Bhiman, J.N., Scheepers, C., et al. (2021). Early assessment of the clinical severity of the SARS-CoV-2 Omicron variant in

- South Africa. Preprint at medRxiv. <https://doi.org/10.1101/2021.12.21.21268116>.
- Wrapp, D., Wang, N., Corbett, K.S., Goldsmith, J.A., Hsieh, C.L., Abiona, O., Graham, B.S., and McLellan, J.S. (2020). Cryo-EM structure of the 2019-nCoV spike in the prefusion conformation. *Science* **367**, 1260–1263.
- Xiao, T., Lu, J., Zhang, J., Johnson, R.I., McKay, L.G.A., Storm, N., Lavine, C.L., Peng, H., Cai, Y., Rits-Volloch, S., et al. (2021). A trimeric human angiotensin-converting enzyme 2 as an anti-SARS-CoV-2 agent. *Nat. Struct. Mol. Biol.* **28**, 202–209.
- Yin, W., Xu, Y., Xu, P., Cao, X., Wu, C., Gu, C., He, X., Wang, X., Huang, S., Yuan, Q., et al. (2021). Structures of the Omicron spike trimer with ACE2 and an anti-Omicron antibody: mechanisms for the high infectivity, immune evasion and antibody drug discovery. Preprint at bioRxiv. <https://doi.org/10.1101/2021.12.27.474273>.
- Zeng, C., Evans, J.P., Qu, P., Faraone, J., Zheng, Y.-M., Carlin, C., Bednash, J.S., Zhou, T., Lozanski, G., Mallampalli, R., et al. (2021). Neutralization and stability of SARS-CoV-2 omicron variant. Preprint at bioRxiv. <https://doi.org/10.1101/2021.12.16.472934>.
- Zhang, J., Cai, Y., Xiao, T., Lu, J., Peng, H., Sterling, S.M., Walsh, R.M., Jr., Rits-Volloch, S., Zhu, H., Woosley, A.N., et al. (2021a). Structural impact on SARS-CoV-2 spike protein by D614G substitution. *Science* **372**, 525–530.
- Zhang, J., Xiao, T., Cai, Y., and Chen, B. (2021b). Structure of SARS-CoV-2 spike protein. *Curr. Opin. Virol.* **50**, 173–182.
- Zhang, J., Xiao, T., Cai, Y., Lavine, C.L., Peng, H., Zhu, H., Anand, K., Tong, P., Gautam, A., Mayer, M.L., et al. (2021c). Membrane fusion and immune evasion by the spike protein of SARS-CoV-2 Delta variant. *Science* **374**, 1353–1360.
- Zhang, K. (2016). Gctf: real-time CTF determination and correction. *J. Struct. Biol.* **193**, 1–12.
- Zhao, H., Lu, L., Peng, Z., Chen, L.L., Meng, X., Zhang, C., Ip, J.D., Chan, W.M., Chu, A.W., Chan, K.H., et al. (2021). SARS-CoV-2 Omicron variant shows less efficient replication and fusion activity when compared with delta variant in TMPRSS2-expressed cells. *Emerg. Microb. Infect.*, 1–18.
- Zheng, S.Q., Palovcak, E., Armache, J.P., Verba, K.A., Cheng, Y., and Agard, D.A. (2017). MotionCor2: anisotropic correction of beam-induced motion for improved cryo-electron microscopy. *Nat. Methods* **14**, 331–332.

STAR★METHODS

KEY RESOURCES TABLE

REAGENT or RESOURCE	SOURCE	IDENTIFIER
Antibodies		
C63C7	Tong et al. (2021)	N/A
C63C8	Tong et al. (2021)	N/A
C12A2	Tong et al. (2021)	N/A
G32B6	Tong et al. (2021)	N/A
C12C9	Tong et al. (2021)	N/A
C83B6	Tong et al. (2021)	N/A
C81D6	Tong et al. (2021)	N/A
C163E6	Tong et al. (2021)	N/A
Sars-Cov-2(2019-nCov) Spike RBD, Rabbit PAb	Sino Biological	Cat#40592-T62
Anti-Rabbit whole IgG-Alkaline Phosphatase antibody	Sigma	Cat#A3687
Bacterial and virus strains		
MLV-based SARS-CoV-2 Omicron pseudovirus	This paper	N/A
HIV-based SARS-CoV-2 Omicron pseudovirus	This paper	N/A
MLV-based SARS-CoV-2 B.1 pseudovirus	Zeng et al. (2021)	N/A
HIV-based SARS-CoV-2 B.1 pseudovirus	Zeng et al. (2021)	N/A
MLV-based SARS-CoV-2 Delta pseudovirus	Zeng et al. (2021)	N/A
MLV-based SARS-CoV-2 Delta AY.4.2 pseudovirus	This paper	N/A
Chemicals, peptides, and recombinant proteins		
T27W ACE2-foldon	Xiao et al. (2021)	N/A
Dimeric ACE2	Xiao et al. (2021)	N/A
Monomeric ACE2	Xiao et al. (2021)	N/A
Critical commercial assays		
Gal-Screen β -Galactosidase Reporter Gene Assay System	ThermoFisher Scientific	Cat#: T1028
Firefly Luciferase Assay Kit	Codex BioSolutions	Cat#: CB-80552-010
Bright-Glo™ Luciferase Assay System	Promega	Cat#: E2650
BCIP/NBT Color Development Substrate	Promega	Cat#: S3771
n-Dodecyl- β -D-Maltopyranoside,	Anatrace	Cat# D310
Strep-Tactin Sepharose	IBA lifesciences	Cat#2-1201-025
Desthiobiotin	IBA lifesciences	Cat#2-1000
Expi293 expression Medium	ThermoFisher	Cat# A1435101
Deposited data		
Omicron three-RBD-down structure	This paper	PDB:7TNW
Omicron three-RBD-down map	This paper	EMDB:EMD-26021
Omicron one-RBD-up structure	This paper	PDB:7TO4
Omicron one-RBD-up map	This paper	EMDB:EMD-26029
Experimental models: Cell lines		
HEK293T cells	ATCC	Cat#: CRL-3216
Expi293F Cells	ThermoFisher Scientific	Cat#: R79007
293T/17 cells	ATCC	Cat#: CRL-11268
Oligonucleotides		
PCR primer 1: 5'-end primer for generating the Omicron expression construct with C-terminal deletion	GCCCTCTAGAGCCACCATGTTCC TGCTGACCACAAAGCGGACAATG TTCGTGTTTCTGGTGCTGC	N/A

(Continued on next page)

Continued

REAGENT or RESOURCE	SOURCE	IDENTIFIER
PCR primer 2: 3'-end primer for generating the Omicron expression construct with C-terminal deletion	TAAACTTAAGCGGATCCTCAGCA GCAGGAGCCACAGCTAC	N/A
PCR primer 3: 5'-end primer for generating the Omicron expression construct without the Strep tag	GGGGACAAC TTTGTACAAAAAAG TTGGAGCCACCATGTTTCGTGTTTCTG	N/A
PCR primer 4: 3'-end primer for generating the Omicron expression construct without the Strep tag	GGGGACAAC TTTGTACAAGAAAG TTGCTTATCATGTATAGTGCAGC TTCACGC	N/A
Sequencing primer 1: Confirming the Omicron insert	CGCAAATGGGCGGTAGGCGTG	N/A
Sequencing primer 2: Confirming the Omicron insert	CAGCAGGAGCCACAGCTAC	N/A
Sequencing primer 3: Confirming the Omicron insert	GTTTCGTGTTCAAGAACATC	N/A
Sequencing primer 4: Confirming the Omicron insert	CCTGTACCGGCTGTTCCGG	N/A
Sequencing primer 5: Confirming the Omicron insert	AACAAC TCTATCGCTAT CC	N/A
Sequencing primer 6: Confirming the Omicron insert	CTGAACACCCTGGTCAA GC	N/A
Sequencing primer 7: Confirming the Omicron insert	CCTGGAAAGACCAGGCGG	N/A
Recombinant DNA		
pCMV-IRES-puro-Spike (Omicron variant)	This paper	N/A
pCMV-IRES-puro-Spike-strep (Omicron variant)	This paper	N/A
pCMV-IRES-puro-Spike (B.1)	Zeng et al. (2021)	N/A
pCMV-IRES-puro-Spike (Alpha variant)	Cai et al. (2021)	N/A
pCMV-IRES-puro-Spike (Beta variant)	Cai et al. (2021)	N/A
pCMV-IRES-puro-Spike (Delta variant)	Zeng et al. (2021)	N/A
pCMV-IRES-puro-full-length-ACE2	Cai et al. (2020)	N/A
Furin human untagged clone	Origene	Cat#: SC337473
TMPRSS2 human untagged clone	Origene	Cat#: SC323858
α -fragment of β -Galactosidase	Cai et al. (2020)	N/A
ω -fragment of β -Galactosidase	Cai et al. (2020)	N/A
Software and algorithms		
Octet Data Analysis HT Version 12.0	Sartorius	https://www.sartorius.com/en/products/protein-analysis/octet-systems-software
Relion	Scheres. (2012)	https://www.sciencedirect.com/science/article/pii/S1047847712002481
crYOLO	Wagner et al. (2019)	https://www.nature.com/articles/s42003-019-0437-z
SerialEM	Mastronarde. (2005)	https://pubmed.ncbi.nlm.nih.gov/16182563/
cryoSPARC	Punjani et al. (2017)	https://www.nature.com/articles/nmeth.4169
Phenix	Adams et al. (2010)	https://pubmed.ncbi.nlm.nih.gov/20124702/
ISOLDE	Croll. (2018)	https://www.ncbi.nlm.nih.gov/pmc/articles/PMC6096486/
UCSF Chimera	Pettersen et al., 2004	https://onlinelibrary.wiley.com/doi/10.1002/jcc.20084

RESOURCE AVAILABILITY

Lead contact

Further information and requests for resources and reagents should be directed to and will be fulfilled by the lead contact, Dr. Bing Chen (bchen@crystal.harvard.edu).

Materials availability

All unique expression constructs and proteins generated in the current study are available from the [lead contact](#) under an MTA with Boston Children's Hospital.

Data and code availability

- The atomic structure coordinates have been deposited in the RCSB Protein DataBank (PDB) under the accession numbers PDB: 7TNW and PDB: 7TO4 and the electron microscopy maps deposited in the Electron Microscopy DataBank (EMDB) under the accession numbers EMD: EMD-26021 and EMD: EMD-26029, and they are publicly available. These accession numbers are also listed in the [key resources table](#).
- This paper does not report original code.
- Any additional information required to reanalyze the data reported in this paper is available from the [lead contact](#) upon request.

EXPERIMENTAL MODEL AND SUBJECT DETAILS

This study has used the following cell lines: HEK293T cells purchased from the American Type Culture Collection (ATCC; Cat#: CRL-3216), Expi293F cells from ThermoFisher Scientific (Cat#: R79007) and 293T/17 cells from the ATCC (Cat#: CRL-11268). All cells were grown following the standard protocols recommended by the manufacturer. Briefly, they were grown in DMEM (Gibco Cat: #10313), Pen Strep (Gibco Cat#: 15140-122), GlutaMAX (Gibco Cat#: 35050-061), and 10%FBS (Avantor/Seradigm Cat#:97068-085) at 37°C with 5.5% CO₂ in T-Flasks or plates, or for suspension culture, in Expi 293 Expression Medium (Gibco Cat#:A14351) and Pen Strep in VWR Erlenmeyer Flasks at 37°C with 8% CO₂, 80% humidity and 130 rpm in a shaker incubator.

METHOD DETAILS

Expression constructs

The gene of a full-length spike (S) protein from Omicron variant (hCoV-19/South Africa/CERI-KRISP-K032233/2021; GISAID accession ID: EPI_ISL_6699757) was assembled from DNA fragments synthesized by Integrated DNA Technologies, Inc. (Coralville, Iowa). The S gene was fused with a C-terminal twin Strep tag (SGGGSWSHPQFEKGGGSGGSSAWSHQFEK) and cloned into a mammalian cell expression vector pCMV-IRES-puro (Codex BioSolutions, Inc, Gaithersburg, MD). The furin and TMPRSS2 expression constructs were purchased from Origene (Rockville, MD, Cat# SC118550 and CAT# SC323858).

Expression and purification of recombinant proteins

Expression and purification of the full-length S proteins were carried out as previously described ([Cai et al., 2020](#)). Briefly, expi293F cells (ThermoFisher Scientific, Waltham, MA) were transiently transfected with the S protein expression constructs. To purify the S protein, the transfected cells were lysed in a solution containing Buffer A (100 mM Tris-HCl, pH 8.0, 150 mM NaCl, 1 mM EDTA) and 1% (w/v) n-dodecyl-β-D-maltopyranoside (DDM) (Anatrace, Inc. Maumee, OH), EDTA-free complete protease inhibitor cocktail (Roche, Basel, Switzerland), and incubated at 4°C for one hour. After a clarifying spin, the supernatant was loaded on a strep-tactin column equilibrated with the lysis buffer. The column was then washed with 50 column volumes of Buffer A and 0.3% DDM, followed by additional washes with 50 column volumes of Buffer A and 0.1% DDM, and with 50 column volumes of Buffer A and 0.02% DDM. The S protein was eluted by Buffer A containing 0.02% DDM and 5 mM d-Desthiobiotin. The protein was further purified by gel filtration chromatography on a Superose 6 10/300 column (GE Healthcare, Chicago, IL) in a buffer containing 25 mM Tris-HCl, pH 7.5, 150 mM NaCl, 0.02% DDM. All RBD proteins were purchased from Sino Biological US Inc (Wayne, PA).

The monomeric ACE2 or dimeric ACE2 proteins were produced as described ([Xiao et al., 2021](#)). Briefly, Expi293F cells transfected with monomeric ACE2 or dimeric ACE2 expression construct and the supernatant of the cell culture was collected. The monomeric ACE2 protein was purified by affinity chromatography using Ni Sepharose excel (Cytiva Life Sciences, Marlborough, MA), followed by gel filtration chromatography. The dimeric ACE2 protein was purified by GammaBind Plus Sepharose beads (GE Healthcare), followed gel filtration chromatography on a Superdex 200 Increase 10/300 GL column. All the monoclonal antibodies were produced as described ([Tong et al., 2021](#)).

Western blot

Western blot was performed using an anti-SARS-COV-2 S antibody following a protocol described previously ([Chen et al., 2015](#)). Briefly, full-length S protein samples were prepared from cell pellets and resolved in 4-15% Mini-Protean TGX gel (Bio-Rad, Hercules, CA) and transferred onto PVDF membranes. Membranes were blocked with 5% skimmed milk in PBS for 1 hour and incubated a SARS-CoV-2 (2019-nCoV) Spike RBD Antibody (Sino Biological Inc., Beijing, China, Cat: 40592-T62) for another hour at room temperature. Alkaline phosphatase conjugated anti-Rabbit IgG (1:5000) (Sigma-Aldrich, St. Louis, MO) was used as a secondary antibody. Proteins were visualized using one-step NBT/BCIP substrates (Promega, Madison, WI).

Cell-cell fusion assay

The cell-cell fusion assay, based on the α -complementation of *E. coli* β -galactosidase, was used to measure fusion activity of SARS-CoV2 S proteins, as described (Cai et al., 2020). Briefly, to produce S-expressing cells, HEK293T cells were transfected by polyethylenimine (PEI; 80 μ g) with either 5 or 10 μ g of the full-length SARS-CoV2 (G614, Alpha, Beta, Delta or Omicron) S construct, as indicated in each specific experiment, and the α fragment of *E. coli* β -galactosidase construct (10 μ g), with/without 5 μ g of the furin expression construct, as well as the empty vector to make up the total DNA amount to 20 μ g. To create target cells, the full-length ACE2 construct at various amount (10 pg-10 μ g), as indicated in each specific experiment, the ω fragment of *E. coli* β -galactosidase construct (10 μ g), with/without 5 μ g of the TMPRSS-2 construct as well as the empty vector were used to transfect HEK293T cells. After incubation at 37°C for 24 hrs, the cells were detached using PBS buffer and resuspended in complete DMEM medium. Notably, the processing between S1/S2 at the furin cleavage site for the Omicron S was not dramatically different from that of other variants at the time when the cells were harvested and therefore the changes in cell-cell fusion observed for Omicron S would not be due to the reduced furin cleavage. 50 μ L S-expressing cells (1.0×10^6 cells/mL) were mixed with 50 μ L ACE2-expressing target cells (1.0×10^6 cells/mL) to allow cell-cell fusion to proceed at 37°C for 2 hrs for our standard assays or from 10 min to 5 hours for the time-course experiments. Cell-cell fusion activity was quantified using a chemiluminescent assay system, Gal-Screen (Applied Biosystems, Foster City, CA), following the standard protocol recommended by the manufacturer. The substrate was added to the cell mixture and allowed to react for 90 min in dark at room temperature. The luminescence signal was recorded with a Synergy Neo plate reader (Biotek, Winooski, VT).

Binding assay by bio-layer interferometry (BLI)

Binding of monomeric or dimeric ACE2 to the full-length Spike protein of each variant was measured using an Octet RED384 system (ForteBio, Fremont, CA). Briefly, monomeric ACE2 or dimeric ACE2 was immobilized to Amine Reactive 2nd Generation (AR2G) biosensors (ForteBio, Fremont, CA) and dipped in the wells containing the S protein at various concentrations (G614 or Omicron, 0.617-150 nM) for association for 5 minutes, followed by a 10 min dissociation phase in a running buffer (PBS, 0.02% Tween 20, 0.02% DDM, 2 mg/mL BSA). To measure binding of a full-length S protein to monoclonal antibodies, the antibody was immobilized to anti-human IgG Fc Capture (AHC) biosensor (ForteBio, Fremont, CA) following a protocol recommended by the manufacturer. The full-length S protein was diluted using a running buffer (PBS, 0.02% Tween 20, 0.02% DDM, 2 mg/mL BSA) to various concentrations (0.617-50 nM) and transferred to a 96-well plate. The sensors were dipped in the wells containing the S protein solutions for 5 min, followed with a 10 min dissociation phase in the running buffer. Control sensors with no ACE2 or antibody were also dipped in the S protein solutions and the running buffer as references. Recorded sensorgrams with background subtracted from the references were analyzed using the software Octet Data Analysis HT Version 12.0 (ForteBio). Binding kinetics was evaluated using a 1:1 Langmuir model except for dimeric ACE2 and antibodies G32B6 and C12A2, which were analyzed by a bivalent binding model. All K_D values for multivalent interactions with antibody IgG or dimeric ACE2 and trimeric S protein are the apparent affinities with avidity effects.

Flow cytometry

Expi293F cells (ThermoFisher Scientific) were grown in Expi293 expression medium (ThermoFisher Scientific). Cell surface display DNA constructs for the SARS-CoV-2 spike variants together with a plasmid expressing blue fluorescent protein (BFP) were transiently transfected into Expi293F cells using ExpiFectamine 293 reagent (ThermoFisher Scientific) per manufacturer's instruction. Two days after transfection, the cells were stained with primary antibodies at 10 μ g/mL concentration. For antibody staining, an Alexa Fluor 647 conjugated donkey anti-human IgG Fc F(ab')₂ fragment (Jackson ImmunoResearch, West Grove, PA) was used as secondary antibody at 5 μ g/mL concentration. Cells were run through an Intellicyt iQue Screener Plus flow cytometer. Cells gated for positive BFP expression were analyzed for antibody and ACE2₆₁₅-foldon T27W binding. The flow cytometry assays were repeated three times with essentially identical results.

MLV-based pseudovirus assay

Murine Leukemia Virus (MLV) particles (plasmids of the MLV components kindly provided by Dr. Gary Whittaker at Cornell University and Drs. Catherine Chen and Wei Zheng at National Center for Advancing Translational Sciences, National Institutes of Health), pseudotyped with various SARS-CoV-2 S protein constructs, were generated in HEK 293T cells, following a protocol described previously for SARS-CoV (Chen et al., 2020; Millet and Whittaker, 2016). To enhance incorporation of S protein into the particles, the C-terminal 19 residues in the cytoplasmic tail of each S protein were deleted. To increase the cleavage between S1 and S2, 1.5 μ g of the furin expression construct was added into the DNA mixture (20 μ g) for MLV particle production. To prepare for infection, 7.5×10^3 of HEK 293 cells, stably transfected with a full-length human ACE2 expression construct, in 15 μ L culture medium were plated into a 384-well white-clear plate coated with poly-D-Lysine to enhance the cell attachment. On day 2, 15 μ L of MLV pseudoviruses for each variant were added into each well pre-seeded with HEK293-ACE2 cells. The plate was centrifuged at 114 xg for 5 min at 12°C. After incubation of the pseudoviruses with the cells for a time period (10 min-8 hr), as indicated in the figures, the medium was removed and the cells were washed once with 1xDPBS. 30 μ L of fresh medium was added back into each well. The cells were then incubated at 37°C for additional 40 hr. Luciferase activities were measured with Firefly Luciferase Assay Kit (CB-80552-010, Codex BioSolutions Inc).

HIV-based pseudovirus assay

Neutralizing activity against SARS-CoV-2 pseudovirus was measured using a single-round infection assay in 293T/ACE2 target cells. Pseudotyped virus particles were produced in 293T/17 cells (ATCC) by co-transfection of plasmids encoding codon-optimized SARS-CoV-2 full-length S constructs, packaging plasmid pCMV DR8.2, and luciferase reporter plasmid pHR' CMV-Luc. G614 S, Omicron S, packaging and luciferase plasmids were kindly provided by Drs. Barney Graham and Tongqing Zhou (Vaccine Research Center, NIH). The 293T cell line stably overexpressing the human ACE2 cell surface receptor protein was kindly provided by Drs. Michael Farzan and Huihui Ma (The Scripps Research Institute). For neutralization assays, serial dilutions of monoclonal antibodies (mAbs) were performed in duplicate followed by addition of pseudovirus. Pooled serum samples from convalescent COVID-19 patients or pre-pandemic normal healthy serum (NHS) were used as positive and negative controls, respectively. Plates were incubated for 1 hour at 37°C followed by addition of 293/ACE2 target cells (1×10^4 /well). Wells containing cells + pseudovirus (without sample) or cells alone acted as positive and negative infection controls, respectively. Assays were harvested on day 3 using Promega BrightGlo luciferase reagent and luminescence detected with a Promega GloMax luminometer. Titers are reported as the concentration of mAb that inhibited 50% or 80% virus infection (IC_{50} and IC_{80} titers, respectively). All neutralization experiments were repeated twice with similar results.

Cryo-EM sample preparation and data collection

To prepare cryo EM grids, 4.0 μ L of the freshly purified full-length Omicron S trimer from the peak fraction in DDM, concentrated to \sim 3.5 mg/mL was applied to a 1.2/1.3 Quantifoil gold grid (Quantifoil Micro Tools GmbH), which were glow discharged with a PELCO easiGlow™ Glow Discharge Cleaning system (Ted Pella, Inc.) for 60 s at 15 mA in advance. Grids were immediately plunge-frozen in liquid ethane using a Vitrobot Mark IV (ThermoFisher Scientific), and excess protein was blotted away by using grade 595 filter paper (Ted Pella, Inc.) with a blotting time of 4 s, a blotting force of -12 at 4°C with 100% humidity. The grids were first screened for ice thickness and particle distribution. Selected grids were used to acquire images by a Titan Krios transmission electron microscope (ThermoFisher Scientific) operated at 300 keV and equipped with a BioQuantum GIF/K3 direct electron detector. Automated data collection was carried out using SerialEM version 3.8.6 (Mastronarde, 2005) at a nominal magnification of 105,000 \times and the K3 detector in counting mode (calibrated pixel size, 0.83 Å) at an exposure rate of 13.362 electrons per pixel per second. Each movie add a total accumulated electron exposure of \sim 53.592 $e^-/\text{Å}^2$, fractionated in 50 frames. Data sets were acquired using a defocus range of 0.5-2.2 μ m.

Image processing and 3D reconstructions

Drift correction for cryo-EM images was performed using MotionCorr2 (Zheng et al., 2017), and contrast transfer function (CTF) was estimated by Gctf (Zhang, 2016) using motion-corrected sums without dose-weighting. Motion corrected sums with dose-weighting were used for all other image processing. crYOLO (Wagner et al., 2019) was used for particle picking and RELION3.0.8 (Scheres, 2012) for 2D classification, 3D classification and refinement procedure. 3,873,988 particles were extracted from 34,031 images using crYOLO with a trained model, and then subjected to 2D classification, giving 2,091,339 good particles. A low-resolution negative-stain reconstruction of the Wuhan-Hu-1 (D614) sample was low-pass filtered to 40 Å resolution and used as an initial model for 3D classification with C1 symmetry. After the first round of 3D classification, a major class with clear structural features was re-extracted with a smaller boxsize and subjected to a second round of 3D classification in C1 symmetry, giving one major class apparently in the closed conformation, and five smaller classes with poor map quality. The major class was re-extracted/unbinned and subjected to one round of 3D auto-refinement, yielding a map at 3.7 Å resolution from 210,415 particles. An additional round of signal-subtraction and 3D classification using a mask for the apex region of the S trimer were performed, leading to three distinct groups, one with one class in the closed, RBD-down conformation, the second with two classes in the RBD-intermediate conformation, and the third with two classes in the one-RBD-up conformation. Particles from the second group were combined and subjected to another round of 3D classification using the apex region mask, producing two major classes in the RBD-down conformation, one class in the RBD-intermediate conformation and another one in the one-RBD-up conformation. Particles from the two RBD-down classes were combined with those from the RBD-down class from the first round of signal-subtraction/classification based on the apex region to give a class with total 69,374 particles, which was subjected to 3D auto-refinement in C1 symmetry. Additional two rounds of 3D auto-refinement in C3 symmetry using a whole mask of this class, followed by CTF refinement, particle polishing, and 3D auto-refinement, produced a map at 3.1 Å resolution. Particles in the two classes of the one-RBD-up conformation from the first round of signal-subtraction/classification based on the apex region were combined with those from the second round of signal-subtraction/classification in the same conformation, and auto-refined in C1 symmetry using a whole mask, followed by CTF refinement, particle polishing and a final round of 3D auto-refinement, giving a final reconstruction from 87,330 particles with a map at 3.4 Å resolution. The class in the RBD-intermediate conformation from the second round of signal-subtraction/classification based on the apex region was auto-refined in C1 symmetry with a whole mask, producing a map at 4.3 Å resolution. Additional rounds of 3D auto-refinement were performed for each class using different sizes of masks at the apex region to improve local resolution near the RBD and NTD. The best density maps were used for model building. At the same time, we have also used cryo-SPARC (Punjani et al., 2017) to validate the data processing, which has given similar results.

All resolutions were reported from the gold-standard Fourier shell correlation (FSC) using the 0.143 criterion. Density maps were corrected from the modulation transfer function of the K3 detector and sharpened by applying a temperature factor that was esti-

mated using post-processing in RELION. Local resolution was determined using ResMap ([Kucukelbir et al., 2014](#)) with half-reconstructions as input maps.

Model building

The initial templates for model building used our G614 S trimer structures (PDB ID: 7KRQ and PDB ID: 7KRR; ref([Zhang et al., 2021a](#))). Several rounds of manual building were performed in Coot ([Emsley et al., 2010](#)). The model was then refined in Phenix ([Adams et al., 2010](#)) against the 3.1 Å (RBD-down), 3.4 Å (one-RBD-up) cryo-EM maps of the Omicron variant. Iteratively, refinement was performed in both Refmac (real space refinement) and ISOLDE ([Croll, 2018](#)), and the Phenix refinement strategy included `minimization_global`, `local_grid_search`, and `adp`, with rotamer, Ramachandran, and reference-model restraints, using 7KRQ and 7KRR as the reference model. The refinement statistics are summarized in [Table S3](#). Structural biology applications used in this project were compiled and configured by SBGrid ([Morin et al., 2013](#)).

QUANTIFICATION AND STATISTICAL ANALYSIS

The cell-cell fusion and pseudovirus experiments were carried out in triplicate and repeated at least twice with similar results. Error bars in the figures indicate the standard deviation calculated by the Excel STDEV function. All the BLI binding experiments were repeated at least twice with essentially identical results. Cryo-EM statistics were determined by Relion, cryo-SPARC, and ResMap as described in the [STAR Methods](#).

Cell Reports, Volume 39

Supplemental information

Structural and functional impact

by SARS-CoV-2 Omicron spike mutations

Jun Zhang, Yongfei Cai, Christy L. Lavine, Hanqin Peng, Haisun Zhu, Krishna Anand, Pei Tong, Avneesh Gautam, Megan L. Mayer, Sophia Rits-Volloch, Shaowei Wang, Piotr Sliz, Duane R. Wesemann, Wei Yang, Michael S. Seaman, Jianming Lu, Tianshu Xiao, and Bing Chen

Supplemental information

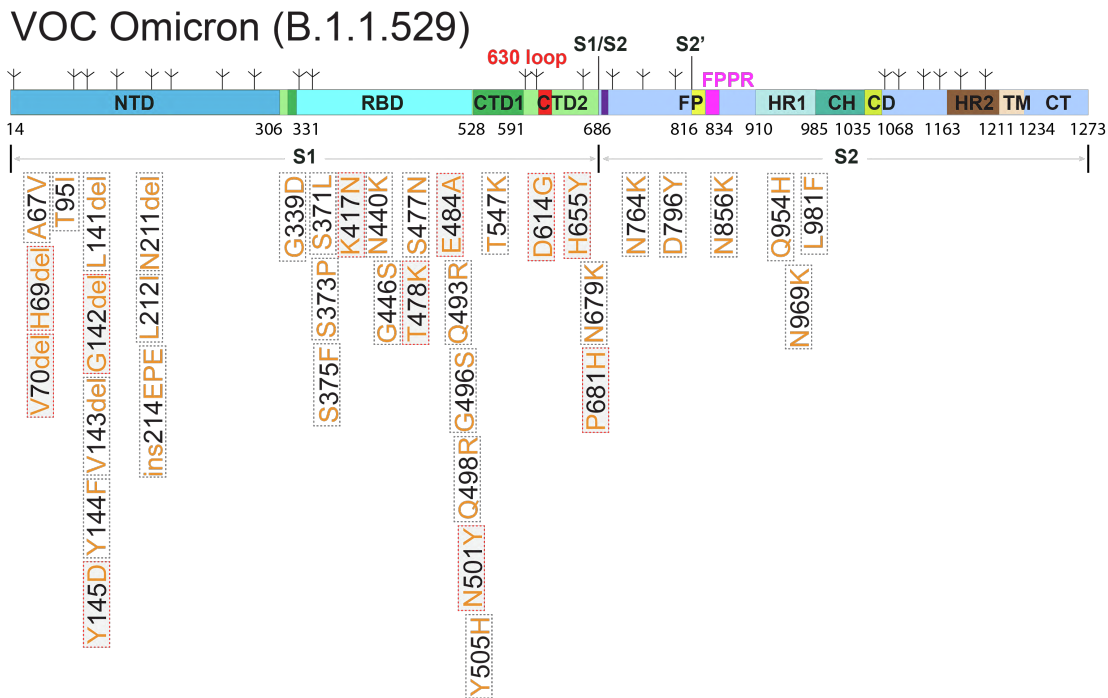


Figure S1. Schematic representation of full-length Omicron (B.1.1.529) spike (S) protein. Related to Figures 1, 3 and 4. The sequence is derived from an Omicron variant (hCoV-19/South Africa/CERI-KRISP-K032233/2021). Segments of S1 and S2 include: NTD, N-terminal domain; RBD, receptor-binding domain; CTD1, C-terminal domain 1; CTD2, C-terminal domain 2; 630 loop; S1/S2, S1/S2 cleavage site; S2', S2' cleavage site; FP, fusion peptide; FPPR, fusion peptide proximal region; HR1, heptad repeat 1; CH, central helix region; CD, connector domain; HR2, heptad repeat 2; TM, transmembrane anchor; CT, cytoplasmic tail; and tree-like symbols for glycans. Positions of all mutations (from the amino-acid sequence of Wuhan-Hu-1) are indicated and those highlighted in red rectangles are also present in one of the previous VOCs.

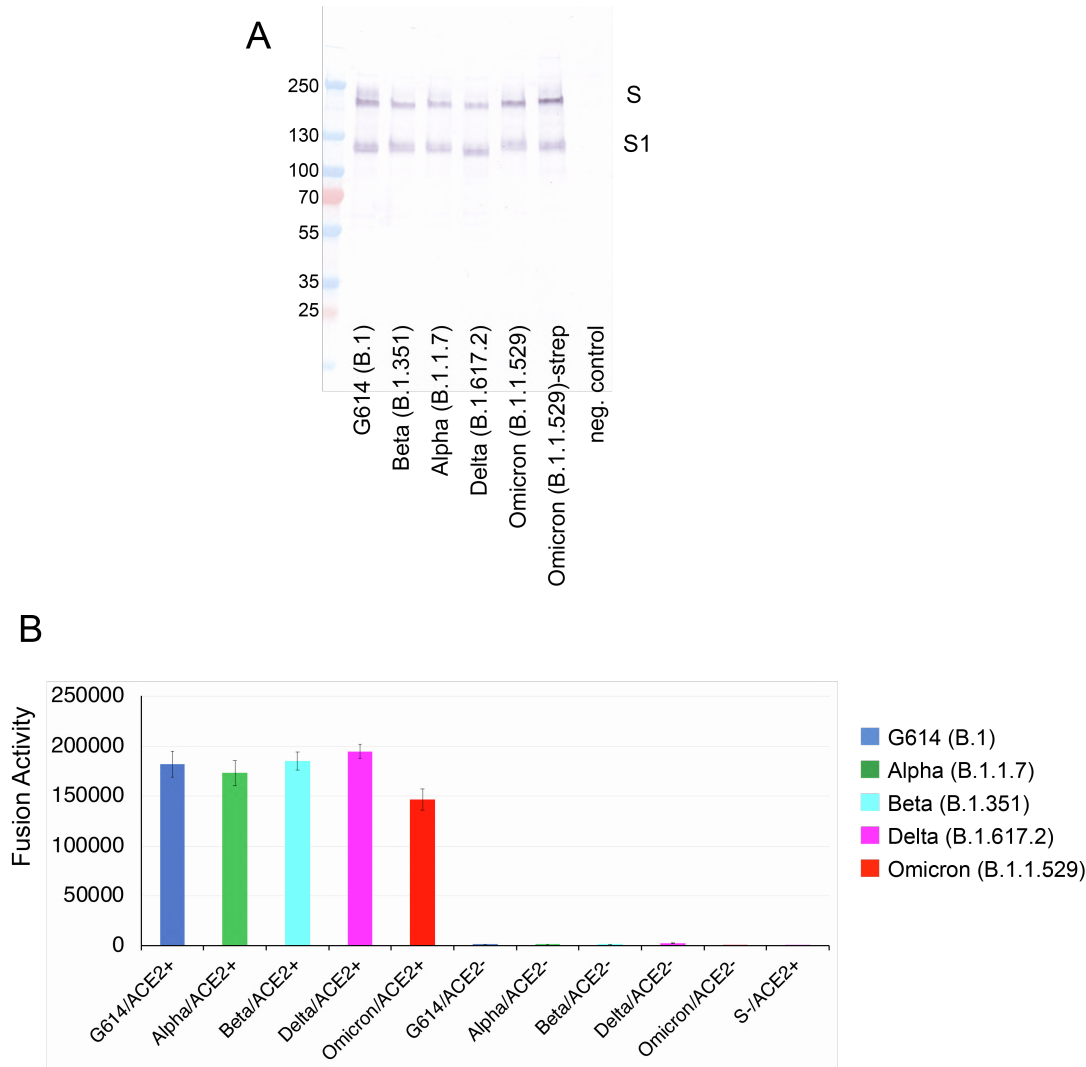


Figure S2. Expression and cell-cell fusion of the Omicron variant S protein. Related to Figure 1. (A) Expression and processing of the full-length S constructs in HEK293 cells. S protein samples prepared from HEK293 cells transiently transfected with 10 μ g of the full-length S expression plasmids were detected by anti-RBD polyclonal antibodies. Bands for the uncleaved S and S1 fragment are indicated. (B) HEK293T cells transfected with the untagged, full-length S protein expression plasmids were fused with ACE2-expressing cells. Cell-cell fusion led to reconstitution of α and ω fragments of β -galactosidase yielding an active enzyme, and the fusion activity was then quantified by a chemiluminescent assay. No ACE2 and no S were negative controls. All the experiments were performed in triplicates and repeated at least twice with independent samples giving similar results.

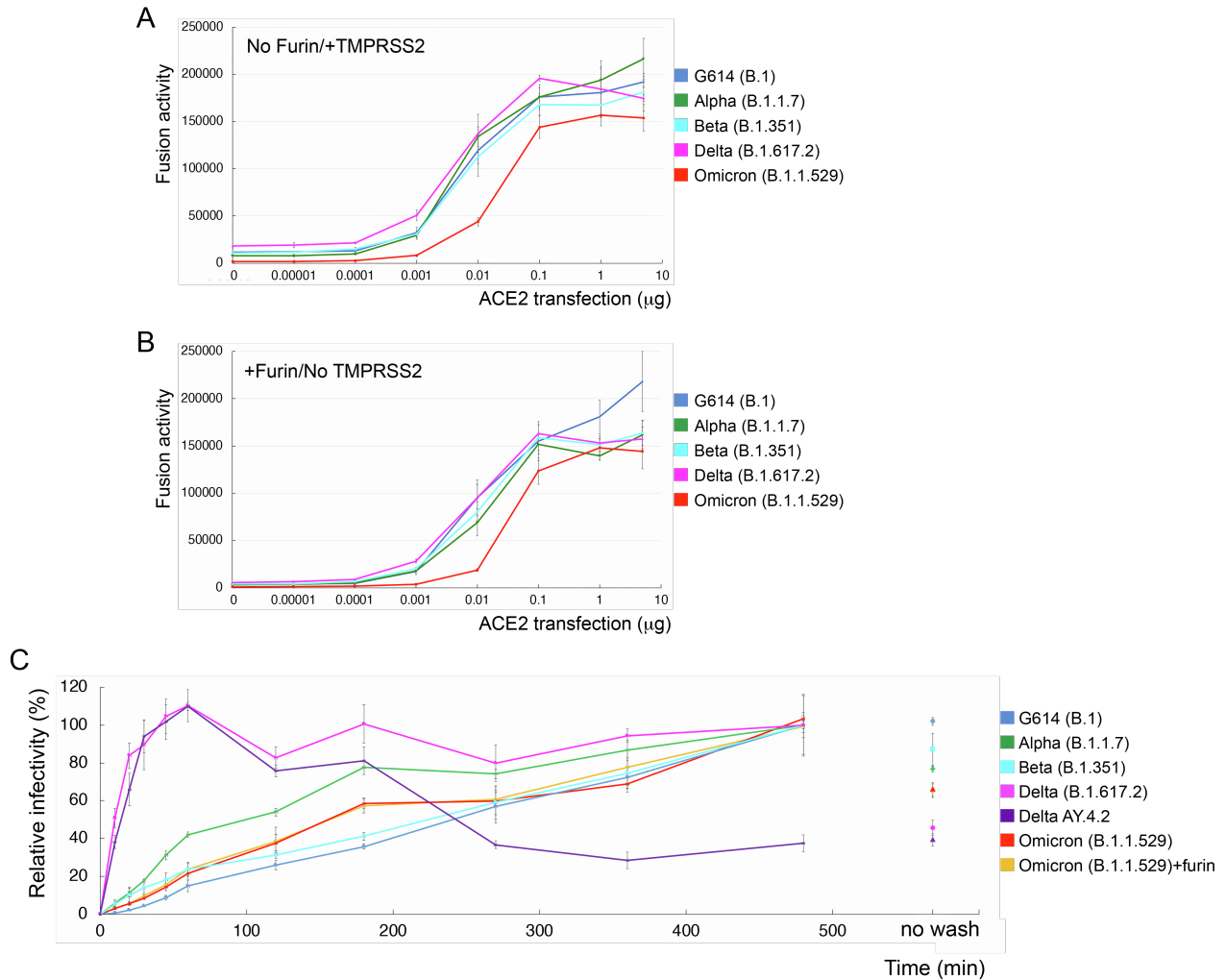


Figure S3. Comparison of membrane fusion mediated by the Delta variant with that by other variants. Related to Figure 1. (A) Cell-cell fusion mediated by various full-length S proteins with the ACE2-expressing target cells cotransfected with 5 μg TMPRSS2 expression construct. **(B)** Cell-cell fusion mediated by various full-length S proteins expressed in HEK293 cells cotransfected with 5 μg furin expression construct and the ACE2-expressing target cells. **(C)** Time course of infection HEK293-ACE2 cells by MLV-based pseudotyped viruses using various SARS-CoV-2 variant S constructs containing a CT deletion in a single cycle. Infection was initiated by mixing viruses and target cells, and viruses were washed out at each time point as indicated. Delta AY.4.2 is a sublineage of the original Delta (B.1.617.2). Omicron (B.1.1.529)+furin is a virus preparation derived from cotransfection of Omicron S and furin. The experiments were performed in triplicates and repeated at least three times with independent samples giving similar results.

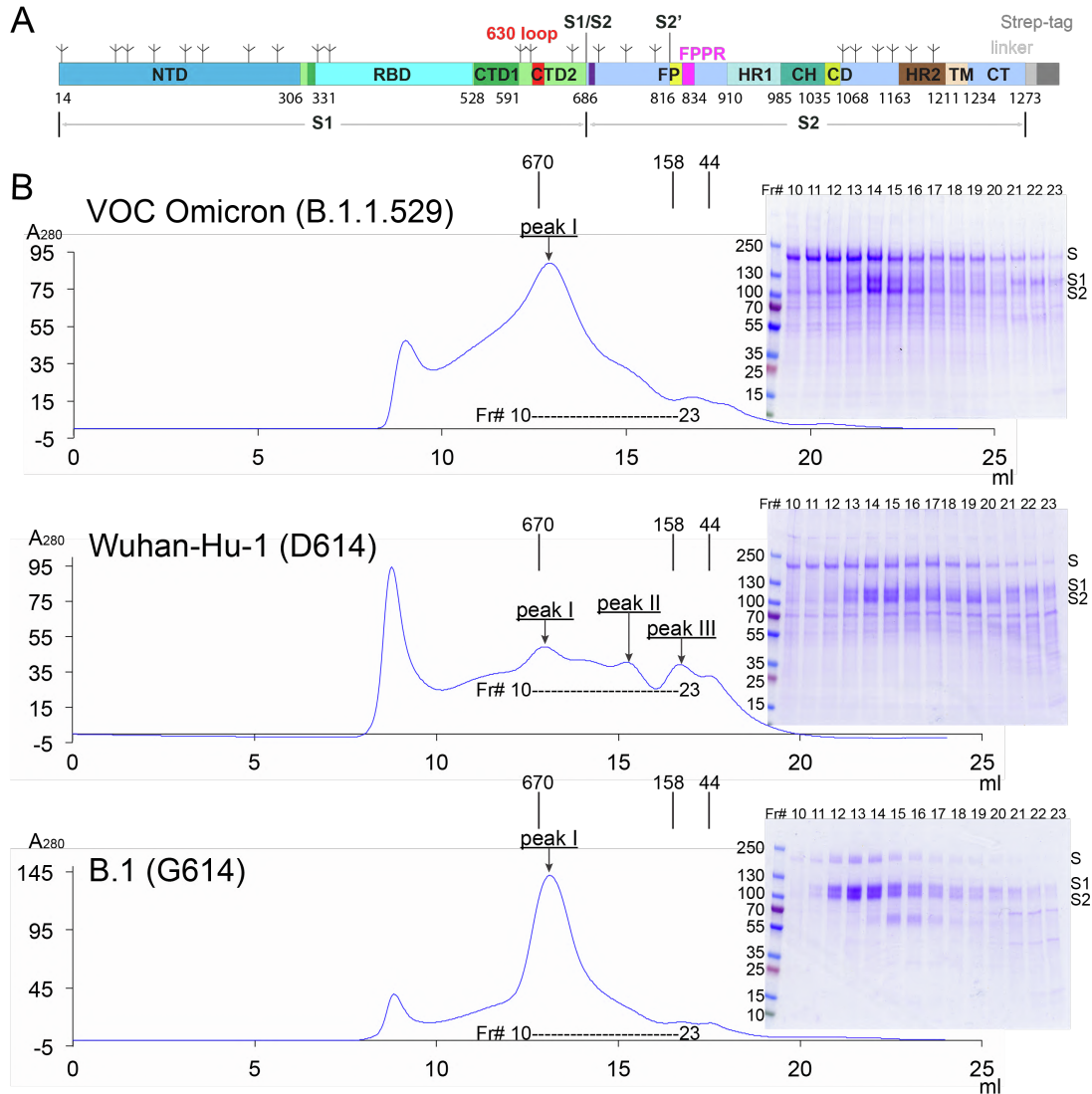


Figure S4. Production of the full-length S protein from the Omicron variant. Related to Figures 2, 3 and 4. (A) A strep-tag for purification was fused to the C-terminus of the full-length S protein by a flexible linker. (B) The full-length Omicron S protein was extracted and purified in detergent DDM, and resolved by gel-filtration chromatography on a Superose 6 column. Peak I, the prefusion S trimer; peak II, the postfusion S2 trimer; and peak III, the dissociated monomeric S1. Inset, peak fractions were analyzed by Coomassie stained SDS-PAGE. Labeled bands are S, S1 and S2. Fr#, fraction number. The molecular weight standards include thyroglobulin (670 kDa), γ -globulin (158 kDa) and ovalbumin (44 kDa). Each experiment was repeated at least three times independently with similar results. The data for the preparations from the Wuhan-Hu-1 (D614) and B.1 (G614), published previously (Cai et al., 2020; Zhang et al., 2021a), are included for convenient comparison.

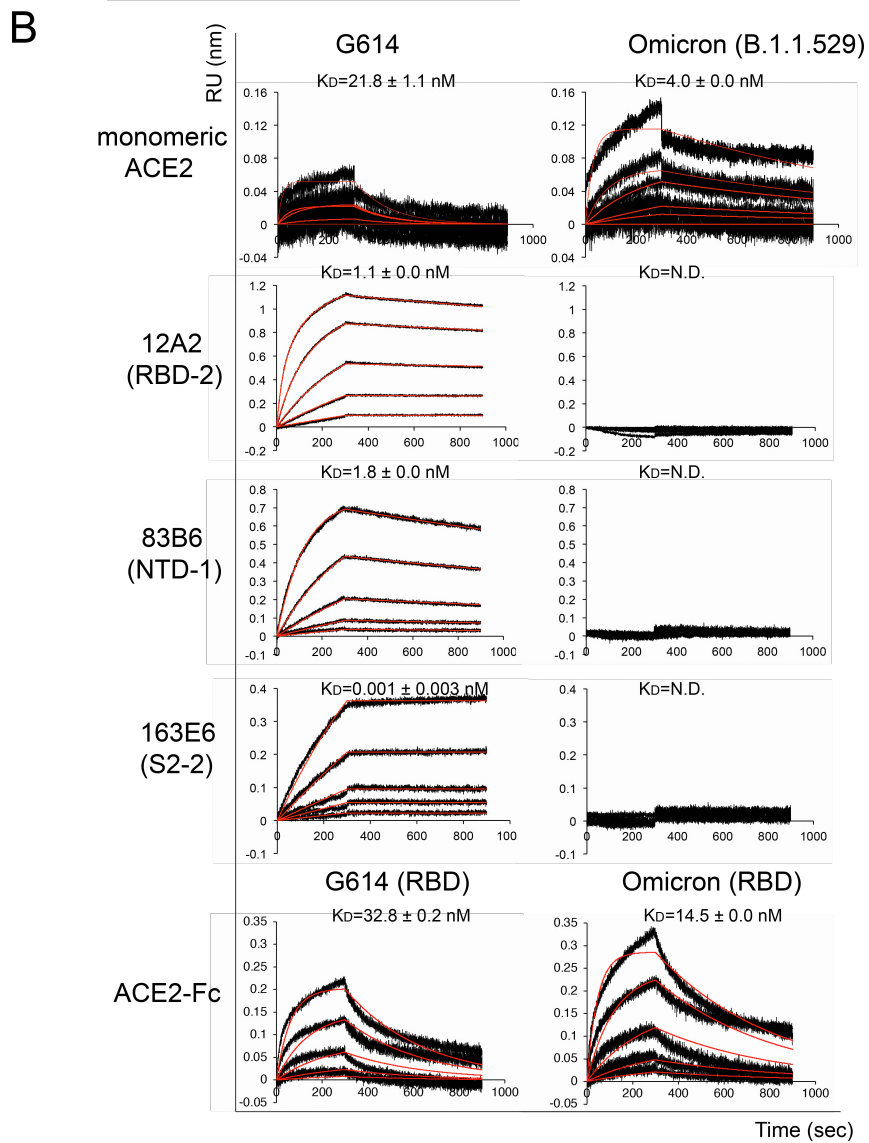
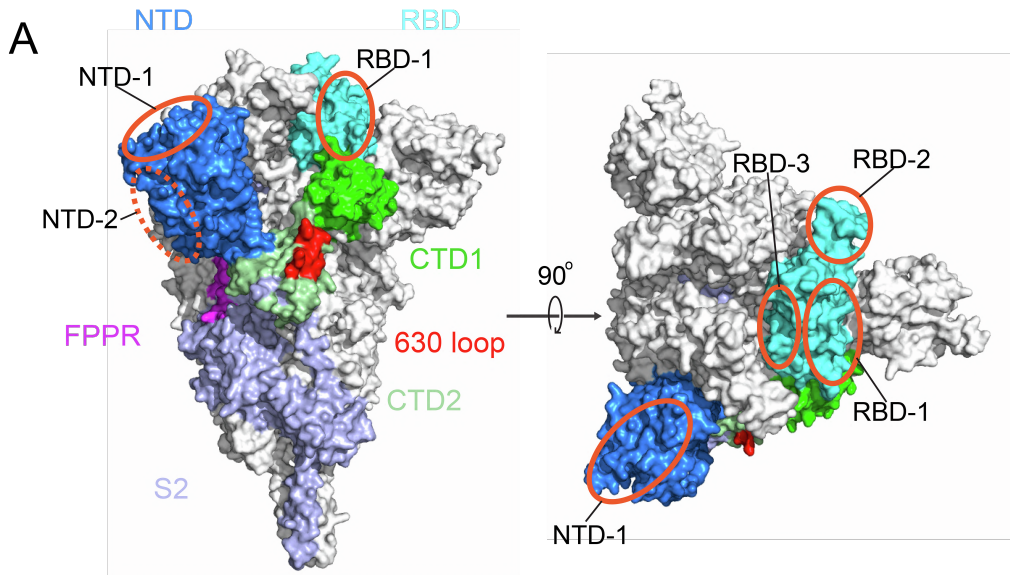


Figure S5. Additional antigenic properties of the purified full-length Omicron S protein. Related to Figure 2. (A) Antibody competition clusters as described in ref(Tong et al., 2021). Surface regions of the S trimer targeted by antibodies on S1 are highlighted by orange ellipses, including RBD-1, RBD-2, RBD-3, NTD-1 and NTD-2. The exact location of NTD-2 is uncertain and therefore marked with a dashed line. (B) Binding analysis of the prefusion S trimers from G614 and Omicron variant with soluble ACE2 constructs was performed by bi-layer interferometry (BLI). For ACE2 binding, purified ACE2 protein was immobilized to AR2G biosensors and dipped into the wells containing each purified S proteins at various concentrations. For antibody binding, various antibodies were immobilized to AHC biosensors and dipped into the wells containing each purified S protein at different concentrations. Binding kinetics were evaluated using a 1:1 Langmuir model except for dimeric ACE2 and antibody G32B6 targeting the RBD-2, which were analyzed by a bivalent binding model. The sensorgrams are in black and the fits in red. Binding constants highlighted by underlines were estimated by steady-state analysis as described in the Methods. RU, response unit. Binding constants are also summarized here and in Data S1-Table S1. N.D., not determined. All experiments were repeated at least twice with essentially identical results.

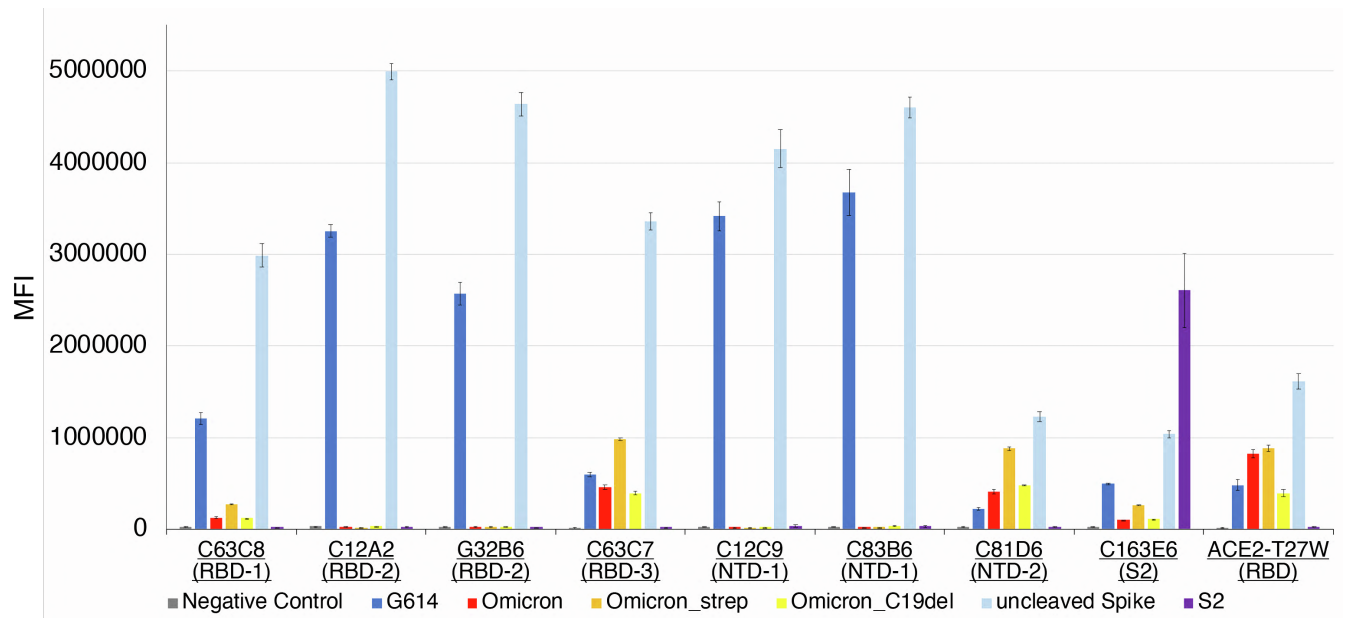


Figure S6. Antigenic properties of the cell-surface Omicron S protein assessed by flow cytometry. Related to Figure 2. Antibody binding to the full-length S proteins of the G614 and Omicron variants, as well as the uncleaved wildtype spike and an S2 construct expressed on the cell surfaces analyzed by flow cytometry. Omicron, the unmodified, full-length S protein from the Omicron variant. Omicron_strep, the S protein fused with a C-terminal twin Strep tag. Omicron_C19del, the S protein with the C-terminal 19 residues deleted. The antibodies and their targets are indicated. A designed ACE2-based inhibitor ACE2615-foldon-T27W was used for detecting receptor binding (Xiao et al., 2021). MFI, mean fluorescent intensity. The error bars represent standard errors of mean from measurements using three independently transfected cell samples. The flow cytometry assays were repeated three times with essentially identical results.

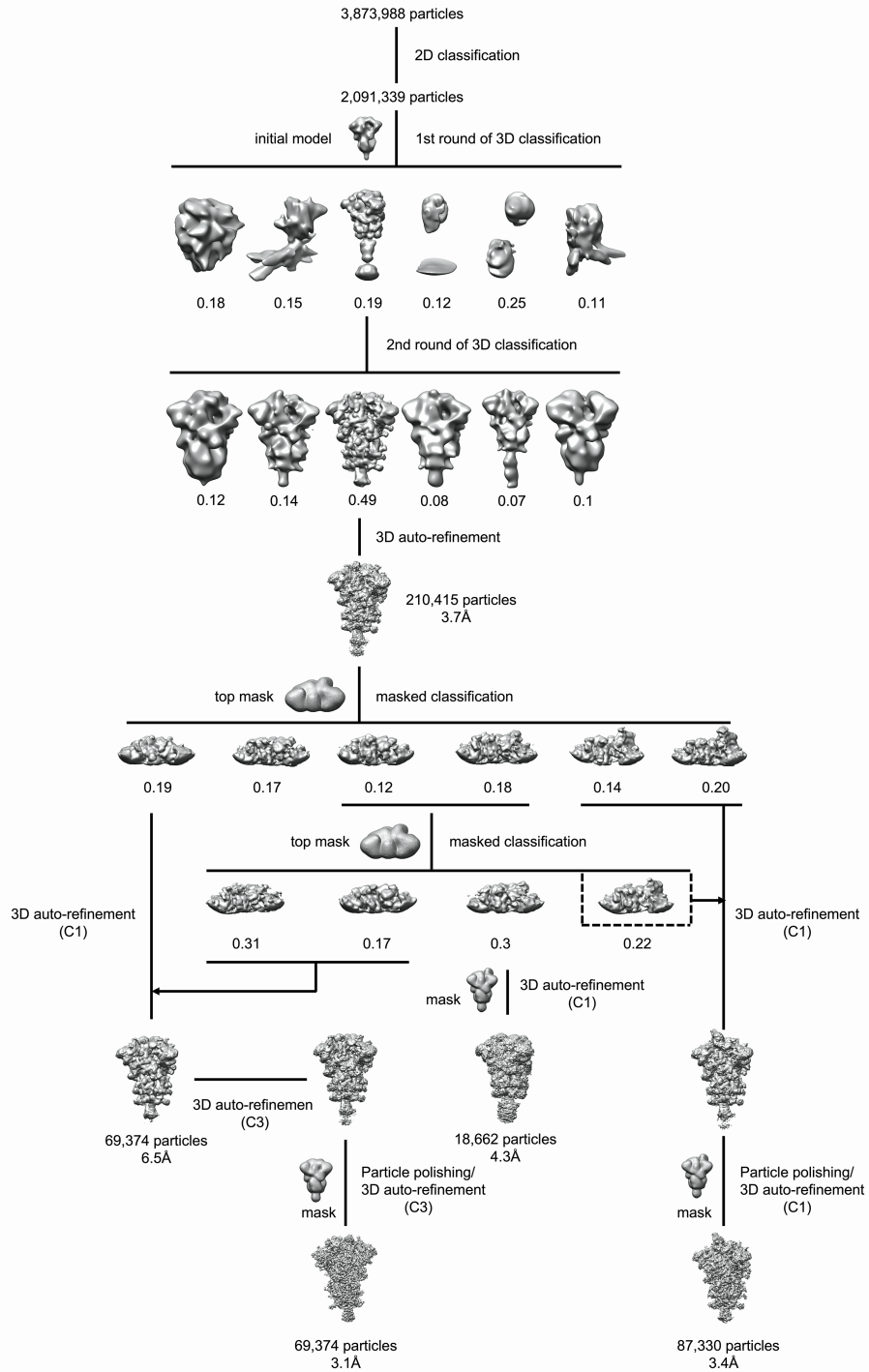
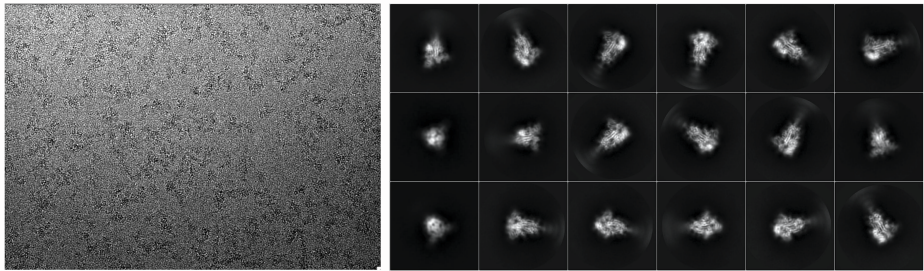


Figure S7. Cryo-EM analysis of the Omicron S trimer. Related to Figures 3 and 4. Top, representative micrograph, and 2D averages (box dimension: 396Å) of the cryo-EM particle images of the Omicron S trimer. Bottom, data processing workflow for structure determination.

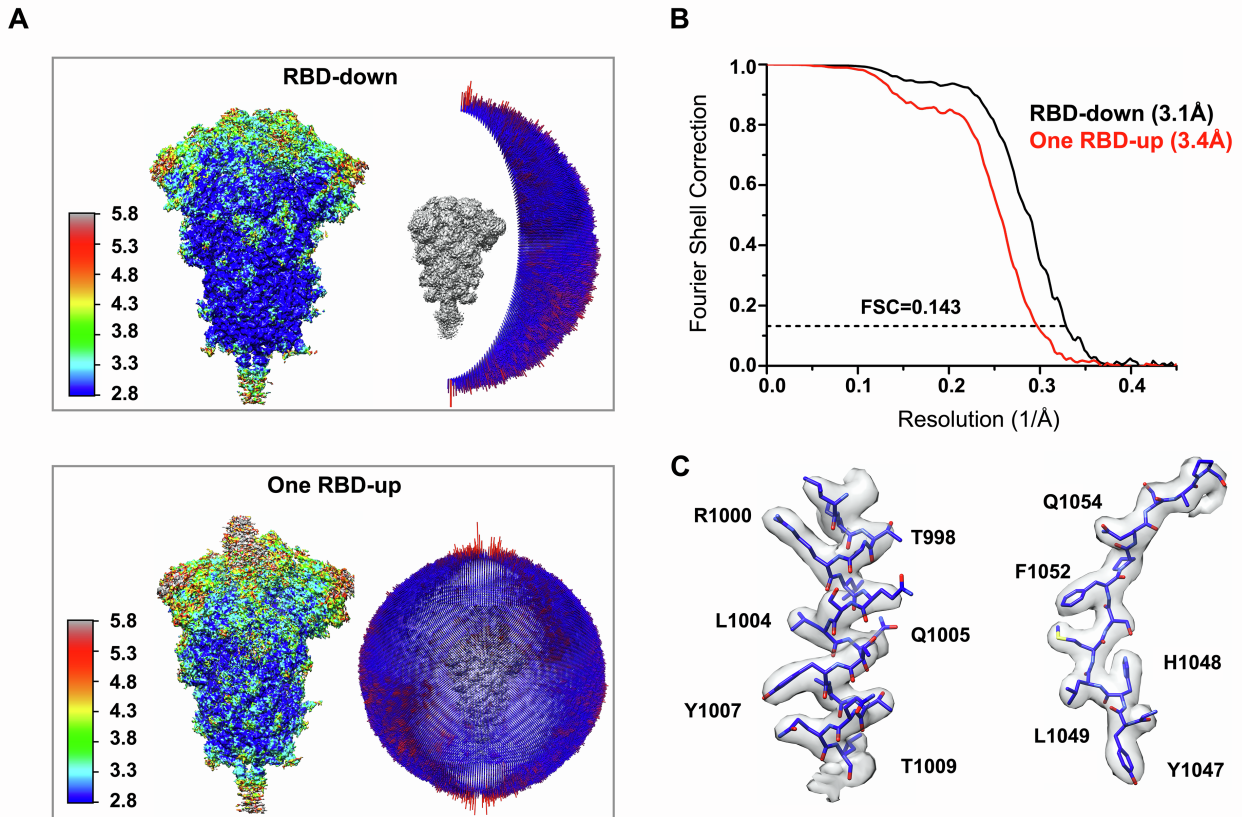
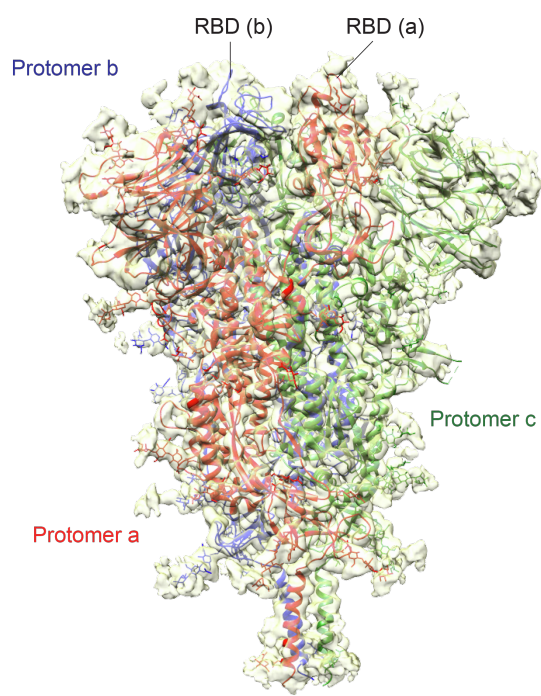
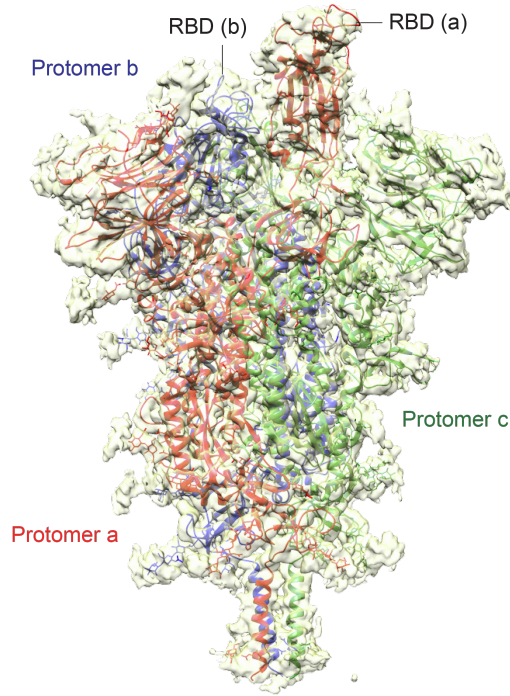


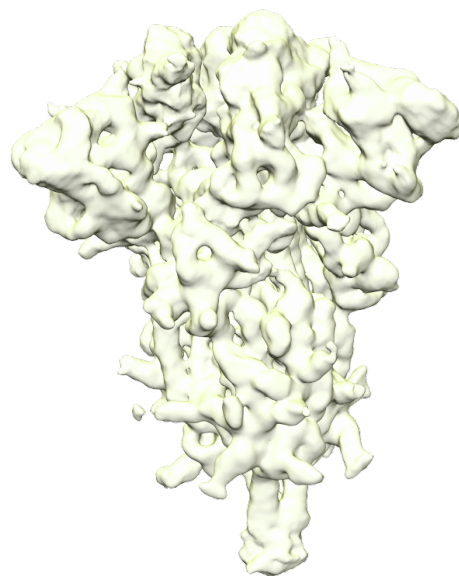
Figure S8. Analysis of the Omicron S trimer structure. Related to Figures 3 and 4. (A) 3D reconstructions of the Omicron trimer preparation in the three-RBD-down and one-RBD-up conformations, respectively, are colored according to local resolution estimated by ResMap. Angular distribution of the cryo-EM particles used in each reconstruction is shown in the side view of the EM map. (B) Gold standard FSC curves of the three refined 3D reconstructions of the Omicron S trimer. (C) Representative density in gray surface from the EM map of the three-RBD-down conformation.



Omicron closed conformation
(40%; 3.1Å)



Omicron one-RBD-up conformation
(50%; 3.4Å)



Omicron one-RBD-intermediate conformation
(10%; 4.3Å)

Figure S9. Cryo-EM structures of the full-length S protein of the Omicron variant. Related to Figures 3 and 4. Three structures of the Omicron S trimer, representing the closed prefusion conformation and one-RBD-up conformations, were modeled based on corresponding cryo-EM density maps at 3.1 and 3.4Å

resolution, respectively. Three protomers (a, b, c) are colored in red, blue and green, respectively. RBD locations are indicated. A third class representing a one-RBD-intermediate conformation refined to 4.3 was not modeled. Particle percentage for each class in the data processing is also indicated, but it may not accurately reflect the conformation distribution of the S trimer in solution.

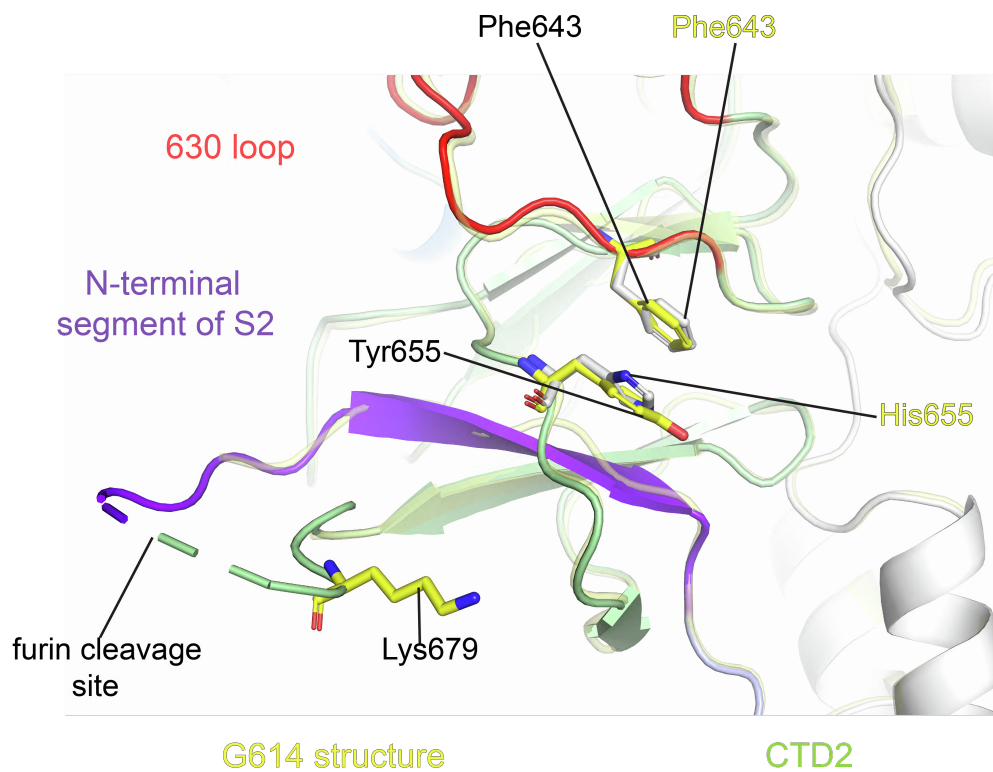
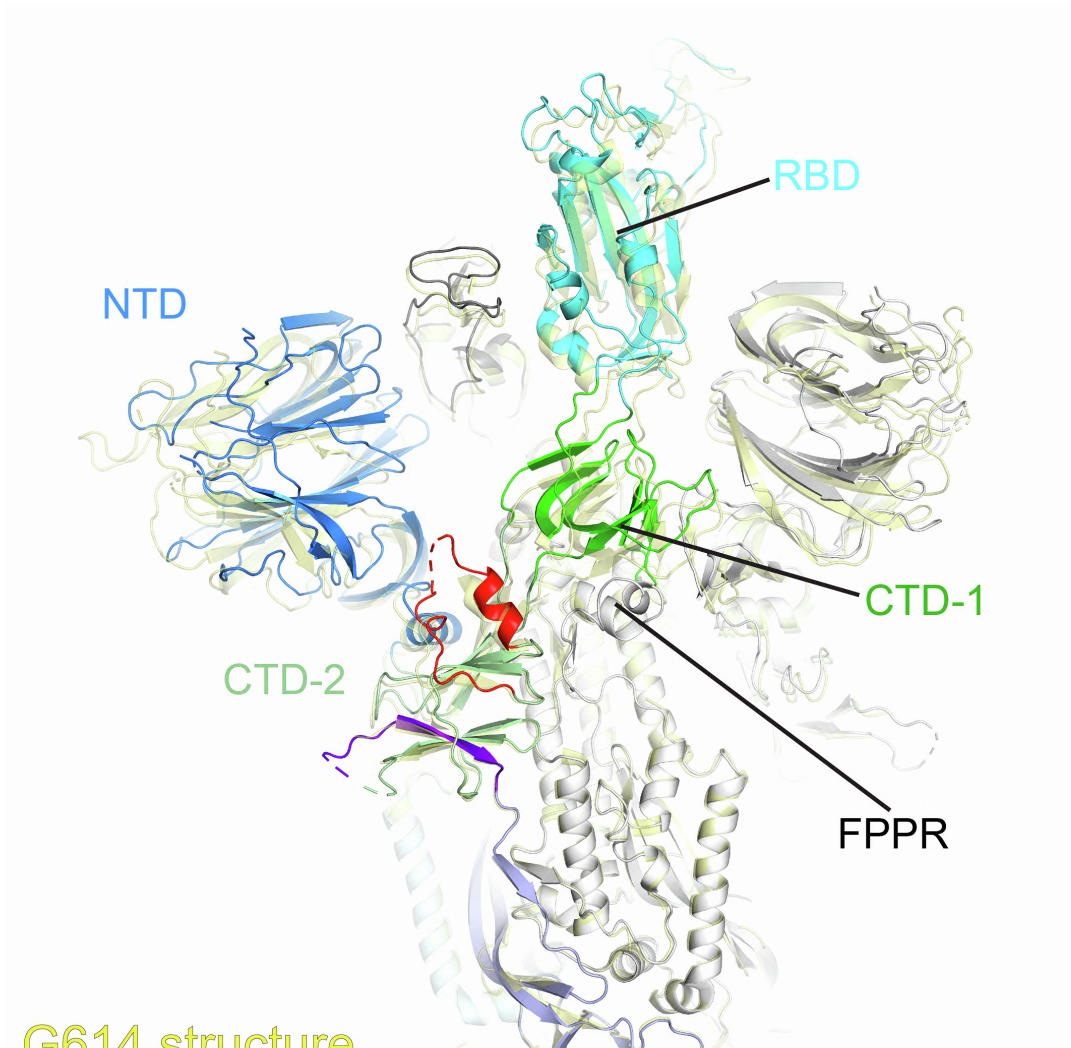


Figure S10. Additional ordered residues near the furin site in the Omicron structure. Related to Figures 3 and 4. Superposition of the structure of the Omicron S trimer in ribbon representation and various colors with the structure of the G614 S in yellow aligned by S2, showing the region near the furin cleavage site.



G614 structure

RBD-up conformation

Figure S11. Superposition of the Omicron and the G614 structures. Related to Figures 3 and 4. Side view of superposition of the one-RBD-up conformation of the Omicron S (various colors) in ribbon diagram, aligned by the S2 portion with the one-RBD-up conformation of the G614 S (yellow). The positions of the RBD in the up conformation and the CTD-1 underneath, as well as the FPPR from the neighboring protomer are indicated.

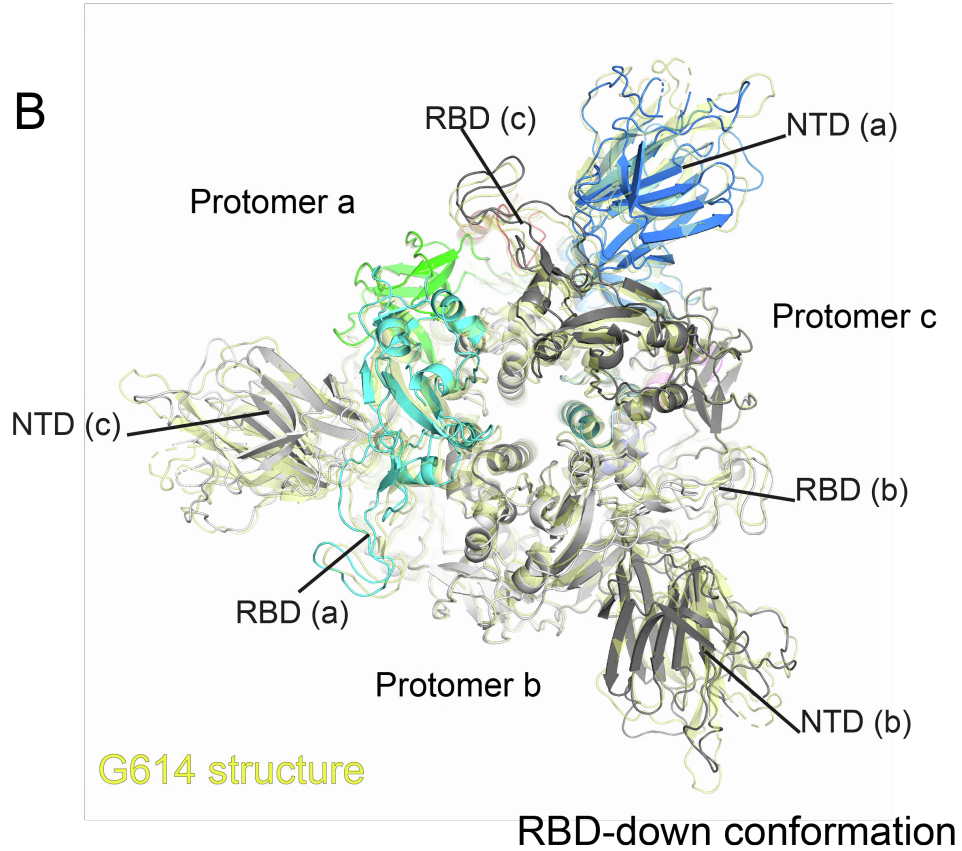
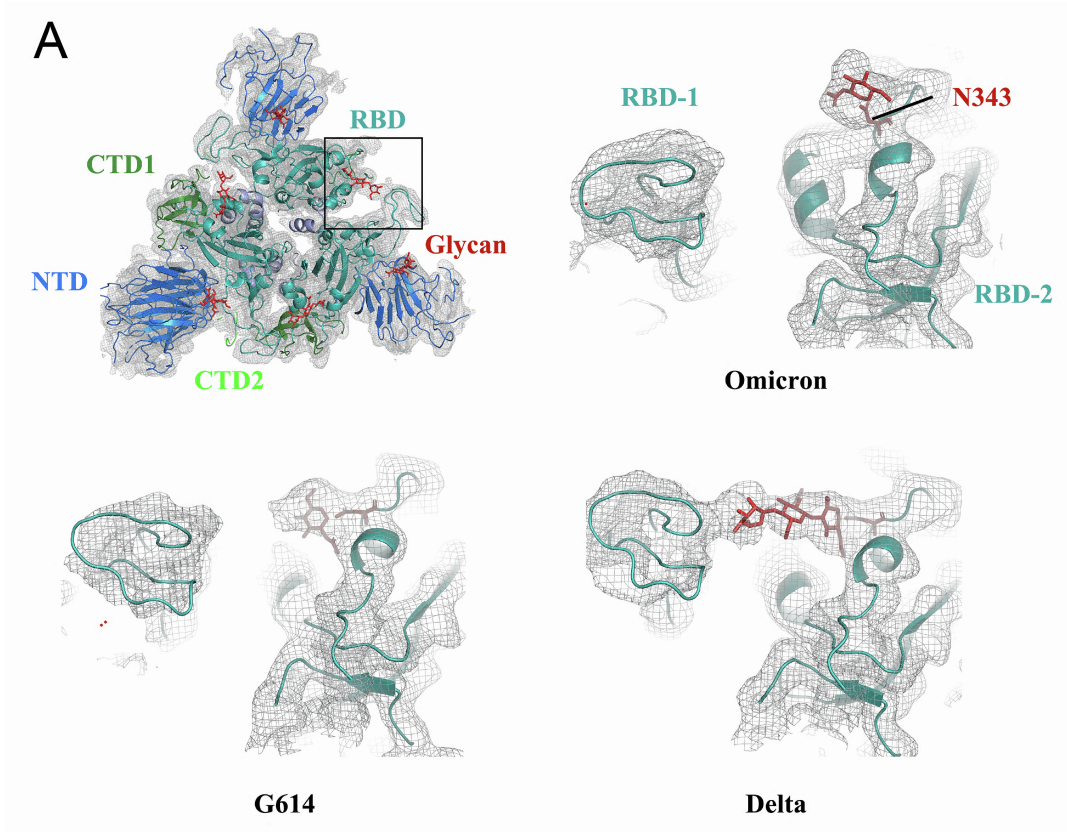


Figure S12. Comparison of the density of the N-linked glycan at Asn343 and the S1 structure between the Omicron and G614 S trimers. Related to Figures 3 and 4. (A) The EM maps of G614, Omicron and Delta trimers in the closed prefusion conformation are compared at the same resolution (3.2Å) and the same contour level. (B) Top view of superposition of the closed conformation of the Omicron S (various colors) in ribbon diagram and the G614 S (yellow), aligned by the S2 portion. RBD positions are indicated.

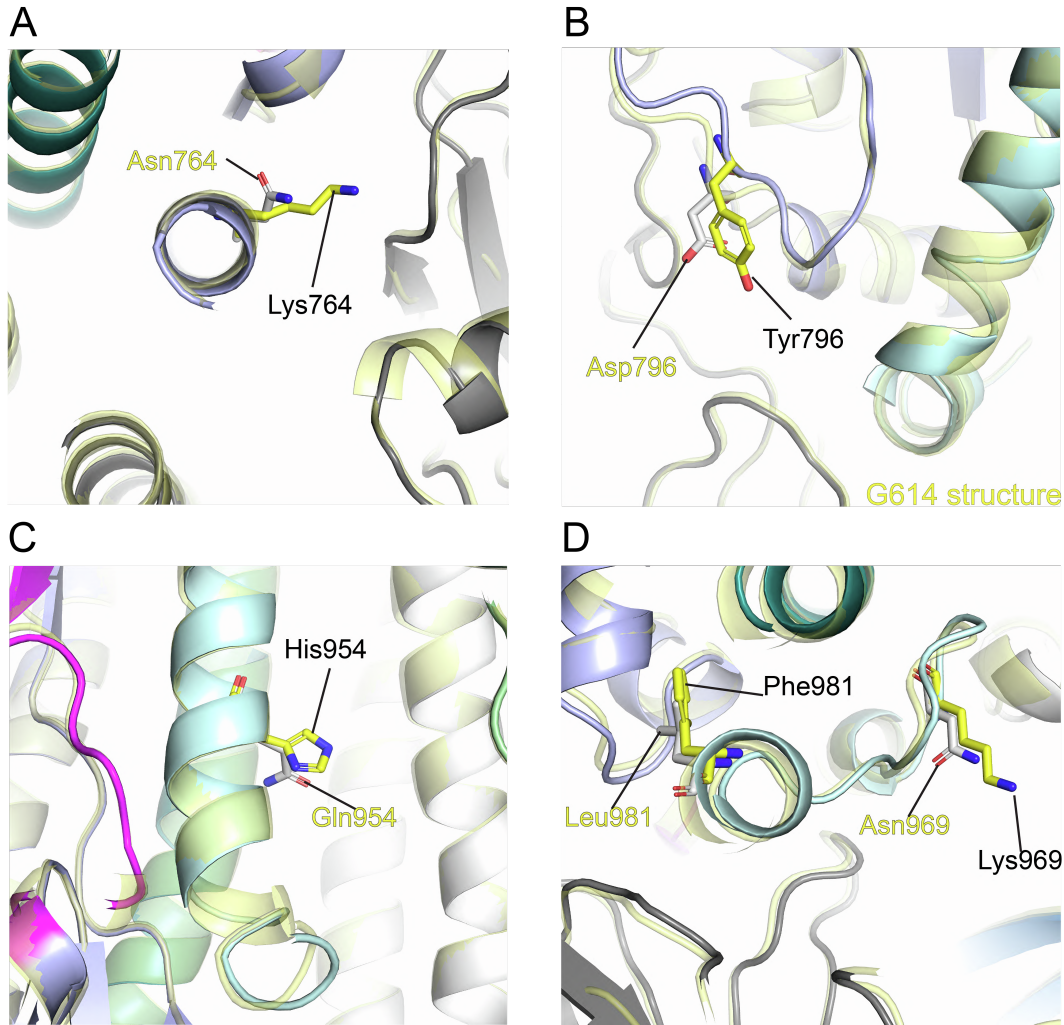


Figure S13. Additional mutations in the Omicron variants. Related to Figures 3 and 4. (A) Superposition of the structure of the Omicron S trimer in ribbon representation and various colors with the structure of the G614 S in yellow aligned by S2, showing the regions near the mutation N764K. (B)-(D) Similar in (A), the regions near D796Y, Q954H, and N969K/L981F, respectively. All mutations are shown as sticks.

Table S1. Binding constants of S-ACE2 interaction. Related to Figure 2.

		K_D (M)	K_D Error	k_a (1/Ms)	k_{a2}	k_a Error	k_{a2} Error	k_{dis} (1/s)	k_{dis2}	k_{dis} Error	k_{dis2} Error
ACE2-Fc (RBD)	G614 S	4.01E-08	3.93E-09	9.78E+04	3.46E+01	4.94E+03	9.07E-01	3.92E-03	2.82E-01	3.29E-04	1.83E-02
	Omicron S	8.33E-09	3.13E-10	1.04E+05	1.38E+01	2.01E+03	5.04E+00	8.63E-04	6.63E-01	2.77E-05	2.43E-01
ACE2-Fc (RBD)	G614 RBD	3.28E-08	2.44E-10	9.03E+04		5.82E+02		2.96E-03		1.10E-05	
	Omicron RBD	1.45E-08	8.53E-11	1.32E+05		6.15E+02		1.92E-03		6.90E-06	
Monomeric ACE2 (RBD)	G614 S	2.18E-08	1.10E-09	3.33E+05		1.61E+04		7.27E-03		1.03E-04	
	Omicron S	3.97E-09	6.00E-11	2.19E+05		2.80E+03		8.70E-04		7.05E-06	
C63C8 (RBD-1)	G614 S	3.55E-09	2.03E-11	1.38E+05		5.91E+02		4.92E-04		1.87E-06	
	Omicron S	N.D.	N.D.	N.D.		N.D.		N.D.		N.D.	
G32B6 (RBD-2)	G614 S	5.29E-10	8.91E-12	2.29E+05	3.23E-01	1.63E+03	3.20E-02	1.21E-04	3.28E-02	1.85E-06	3.10E-03
	Omicron S	N.D.	N.D.	N.D.	N.D.	N.D.	N.D.	N.D.	N.D.	N.D.	N.D.
C12A2 (RBD-2)	G614 S	1.13E-09	2.24E-11	1.62E+05	1.42E-01	1.59E+03	1.39E-02	1.83E-04	2.37E-02	3.15E-06	2.36E-03
	Omicron S	N.D.	N.D.	N.D.	N.D.	N.D.	N.D.	N.D.	N.D.	N.D.	N.D.
C63C7 (RBD-3)	G614 S	4.03E-09	1.82E-11	1.19E+05		4.13E+02		4.80E-04		1.40E-06	
	Omicron S	5.63E-09	3.05E-11	1.06E+05		4.85E+02		5.95E-04		1.72E-06	
C12C9 (NTD-1)	G614 S	5.49E-09	4.04E-11	6.38E+04		3.88E+02		3.50E-04		1.45E-06	
	Omicron S	N.D.	N.D.	N.D.		N.D.		N.D.		N.D.	
C83B6 (NTD-1)	G614 S	1.75E-09	5.81E-12	1.64E+05		2.91E+02		2.86E-04		8.06E-07	
	Omicron S	N.D.	N.D.	N.D.		N.D.		N.D.		N.D.	
C81D6 (NTD-2)	G614 S	7.91E-09	4.09E-11	1.04E+05		4.81E+02		8.19E-04		1.85E-06	
	Omicron S	1.62E-09	2.00E-11	7.23E+04		3.69E+02		1.17E-04		1.32E-06	
C163E6 (S2-2)	G614 S	1.35E-12	2.85E-12	3.58E+04		3.87E+02		<1.0E-07		1.02E-07	
	D Omicron S	N.D.	N.D.	N.D.		N.D.		N.D.		N.D.	

Table S2. Neutralization of the SARS-CoV-2 Omicron variant. Related to Figure 2.

Antibody/ACE2 construct	Neutralization titer ($\mu\text{g/ml}$)			
	G614 (B.1)		Omicron (B.1.1529)	
	IC ₅₀	IC ₈₀	IC ₅₀	IC ₈₀
C63C8 (RBD-1)	12.578	33.721	>50	>50
C12A2 (RBD-2)	0.026	0.094	>50	>50
G32B6 (RBD-2)	0.016	0.056	>50	>50
C63C7 (RBD-3)	10.494	>50	48.823	>50
C12C9 (NTD-1)	0.066	>50	>50	>50
C83B6 (NTD-1)	0.288	>50	>50	>50
C81D6 (NTD-2)	>50	>50	>50	>50
C163E6 (S2-2)	>50	>50	>50	>50
ACE2-T27W-Fd	0.098	0.468	0.036	0.126
Positive serum pool 2 (1/x)	1,172	213	<20	<20
Normal Human Serum (1/x)	<20	<20	<20	<20

Table S3. Cryo-EM statistics. Related to Figure 3 and STAR Methods.

EM data collection and reconstruction statistics		
Protein	Full-length S of Omicron variant	
Microscope	Titan Krios	
Voltage(kV)	300	
Detector	Gatan K3	
Magnification(nominal)	105,000	
Energy filter slit width (eV)	20	
Calibrated pixel size (Å/pix)	0.83	
Exposure rate (e ⁻ /pix/sec)	13.362	
Frames per exposure	50	
Total electron exposure (e ⁻ /Å ²)	53.592	
Exposure per frame (e ⁻ /Å ²)	1.072	
Defocus range (µm)	-0.5,-2.2	
Automation software	SerialEM	
# of Micrographs used	34,031	
Particles extracted	3,873,988	
Particles after 2D classification	2,091,339	
Class	RBD-down	RBD-up
Total # of refined particles	69,374	87,330
Symmetry imposed	C3	C1
Estimated accuracy of translations/rotations	0.79/1.78	1.35/2.74
Map sharpening B-factor	-94.3	-105.1
Unmasked Resolution at 0.5/0.143 FSC (Å)	3.9/3.4	4.5/3.8
Masked resolution at 0.5/0.143 FSC (Å)	3.5/3.1	3.9/3.4
Model refinement and validation statistics		
Class	RBD-down	RBD-up
PDB		
Composition		
Amino acids	3357	3350
Glycans	54	57
RMSD bonds (Å)	0.013	0.013
RMSD angles (°)	1.88	1.95
Mean B-factors		
Amino acids	100	126
Glycans	144	159
Ramachandran		
Favored (%)	91.54	92.03
Allowed(%)	7.65	7.19
Outliers(%)	0.81	0.78
Rotamer outliers (%)	1.81	2.60
Clash score	5.90	5.55
C-beta outliers (%)	0.67	0.64
CaBLAM outliers (%)	3.45	3.03
CC (mask)	0.84	0.82
CC (volume)	0.83	0.81
MolProbity score	2.02	2.10
EMRinger score	3.50	2.79