

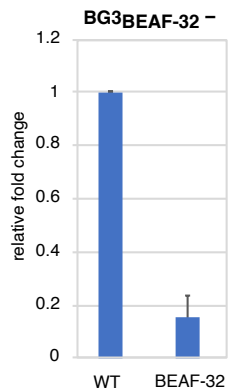
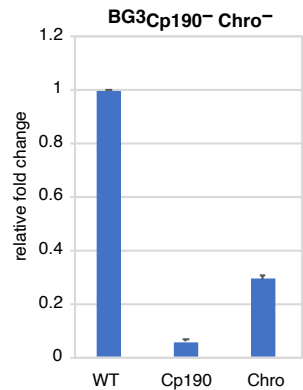
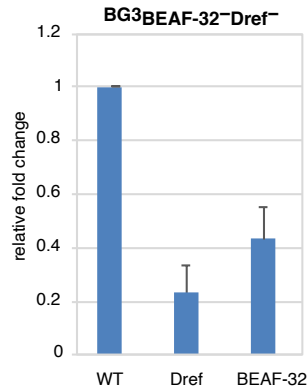
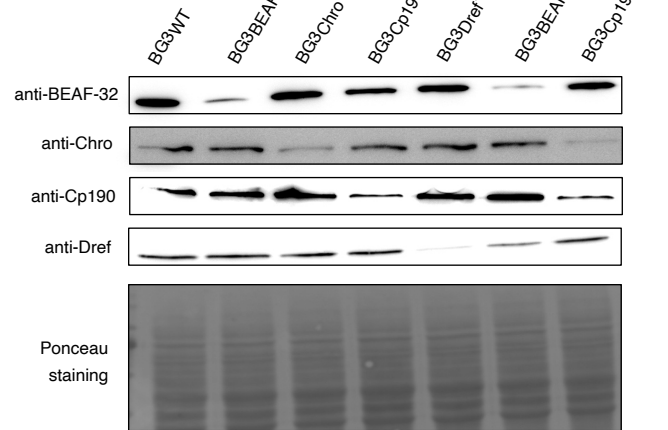
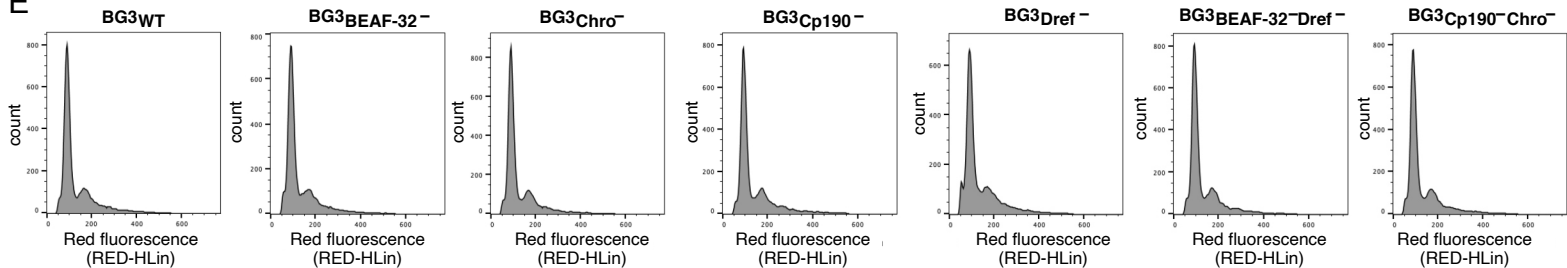
A**B****C****D****E**

Figure S1. *RNAi efficiency and cell cycle analysis in the three knockdowns.* RT-qPCR in (A) BEAF-32 single knockdown, (B) Cp190 Chro double knockdown and (C). BEAF-32 Dref double knockdown. Data is normalised with Rpl32 and plotted relative to WT levels. (D) Western Blots showing the depletion of BEAF-32, Chro, Cp190 and Dref following RNAi treatment in WT and BEAF-32, Cp190, Chro and Dref single and double knockdowns as indicated in the panel. (E) FACS analysis showing no effect on cell growth or cell cycle arrest in WT or BEAF-32, Cp190, Chro and Dref single and double knockdowns.