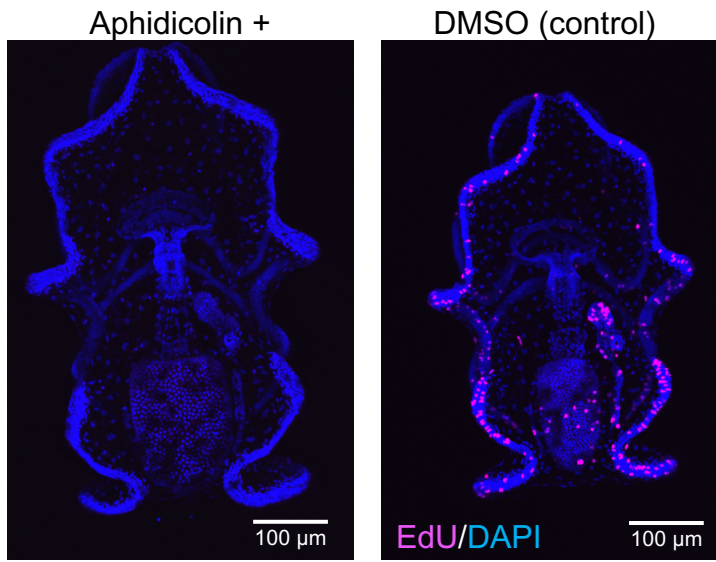


Supplementary Figure

Hydrocoel morphogenesis forming the
pentaradial body plan in a sea cucumber,
Apostichopus japonicus

Sumio Udagawa, Takafumi Ikeda, Kohei Oguchi, Hisanori
Kohtsuka and Toru Miura

Supplementary figure 1



Supplementary Figure 1 EdU detection in aphidicolin-treated specimens.

Cell proliferation was detected using EdU after a 3-hour treatment with aphidicolin. In larvae incubated with EdU and 0.5 % DMSO (control), EdU signal was detected in the whole body. On the other hand, EdU signal was not detected in larvae incubated with EdU and aphidicolin.