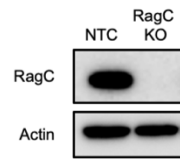
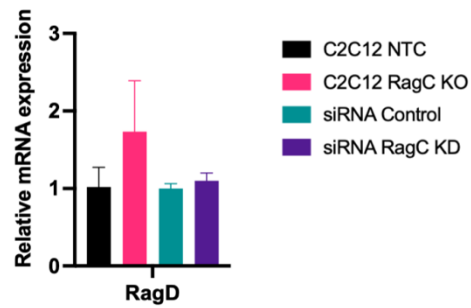


S3A



S3B



(S3) RagD expression is not increased as compensation for RagC CRISPR knockout or siRNA knockdown. (A) C2C12 cells with RagC CRISPR knockout were used for Fig 5A. (B) RagC CRISPR knockout (in C2C12s) and RagC siRNA knockdown (in HEK 293Ts) showed no significant compensation of RagD expression. The data underlying all the graphs shown in the figure is included in the S1 Data file.