

Role of SPAK-NKCC1 signaling cascade in the choroid plexus blood-CSF barrier damage after stroke

Jun Wang^{1,2}, Ruijia Liu², Md Nabiul Hasan^{2,8}, Sydney Fischer², Yang Chen^{1,2}, Matt Como³, Victoria M Fiesler², Mohammad Iqbal H. Bhuiyan^{2,8}, Shuying Dong², Eric Li², Kristopher T Kahle⁴, Jinwei Zhang⁵, Xianming Deng⁶, Arohan R Subramanya^{7,8}, Gulnaz Begum^{2,8}, Yan Yin^{1*}, Dandan Sun^{2,8*}

¹Department of Neurology, The Second Hospital of Dalian Medical University, Dalian, Liaoning, China

²Department of Neurology, University of Pittsburgh, Pittsburgh, PA, USA

³Pennsylvania State University, State College, PA, USA.

⁴Department of Neurosurgery, The Massachusetts General Hospital and Harvard Medical School, Boston, MA, USA

⁵Institute of Biomedical and Clinical Sciences, Medical School, College of Medicine and Health, University of Exeter, Hatherly Laboratory, Exeter, EX4 4PS, UK

⁶State Key Laboratory of Cellular Stress Biology, Innovation Center for Cell Signaling Network, School of Life Sciences, Xiamen University, Xiamen, Fujian, China

⁷Department of Medicine, Renal-Electrolyte Division, University of Pittsburgh School of Medicine, Pittsburgh, PA, USA

⁸ Research Service, Veterans Affairs Pittsburgh Health Care System, Pittsburgh, PA, USA

Running title: SPAK-NKCC1 complex in the blood-CSF barrier

***Address correspondence to:**

Dandan Sun, M.D., Ph.D.

Department of Neurology

University of Pittsburgh

7016 Biomedical Science Tower 3, 3501 Fifth Ave.

Pittsburgh, PA 15260

Tel: (412) 624-0418, Fax: (412) 648-3321

E-mail address: sund@upmc.edu

Yan Yin, M.D., Ph.D.

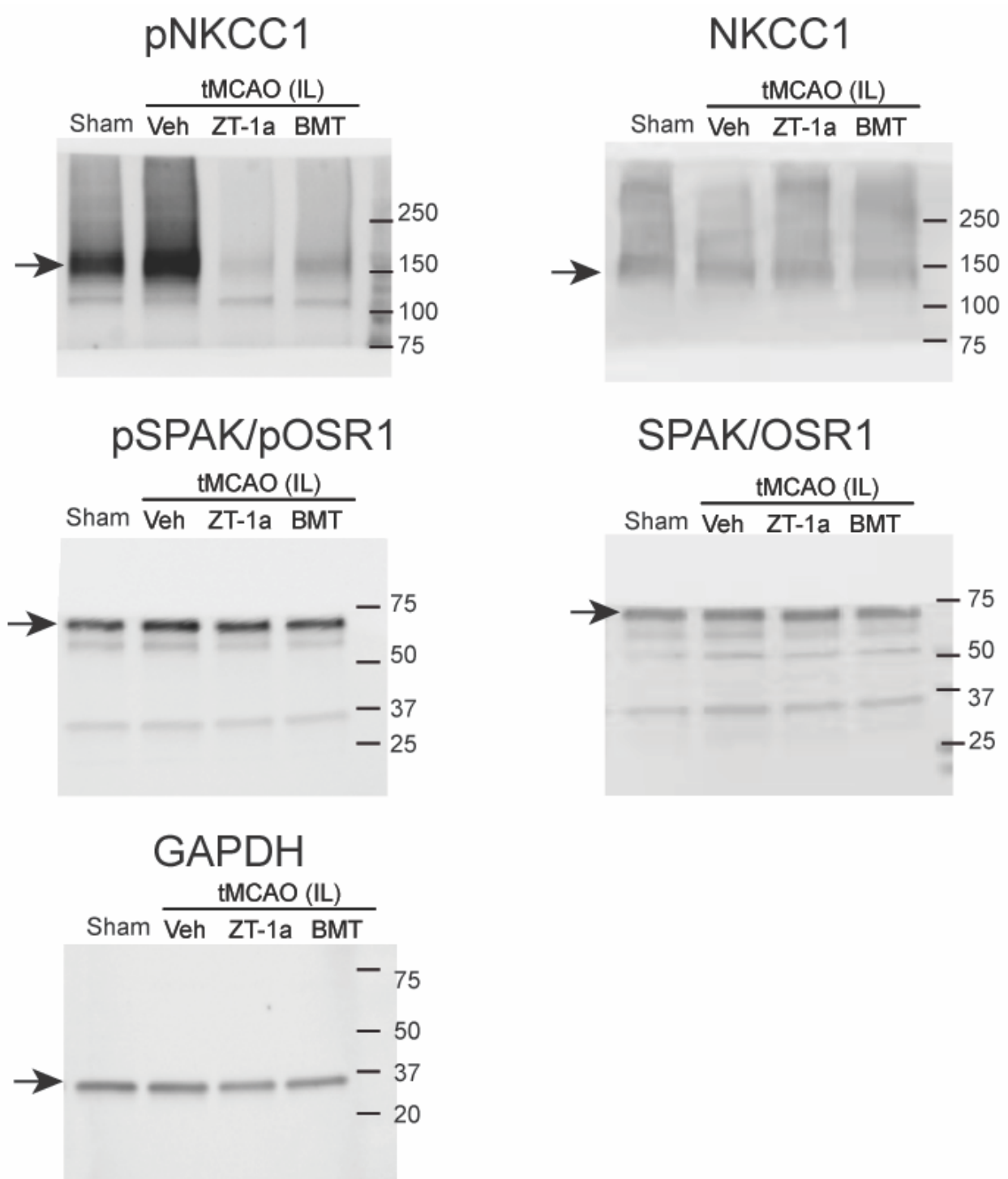
Department of Neurology

The Second Hospital of Dalian Medical University

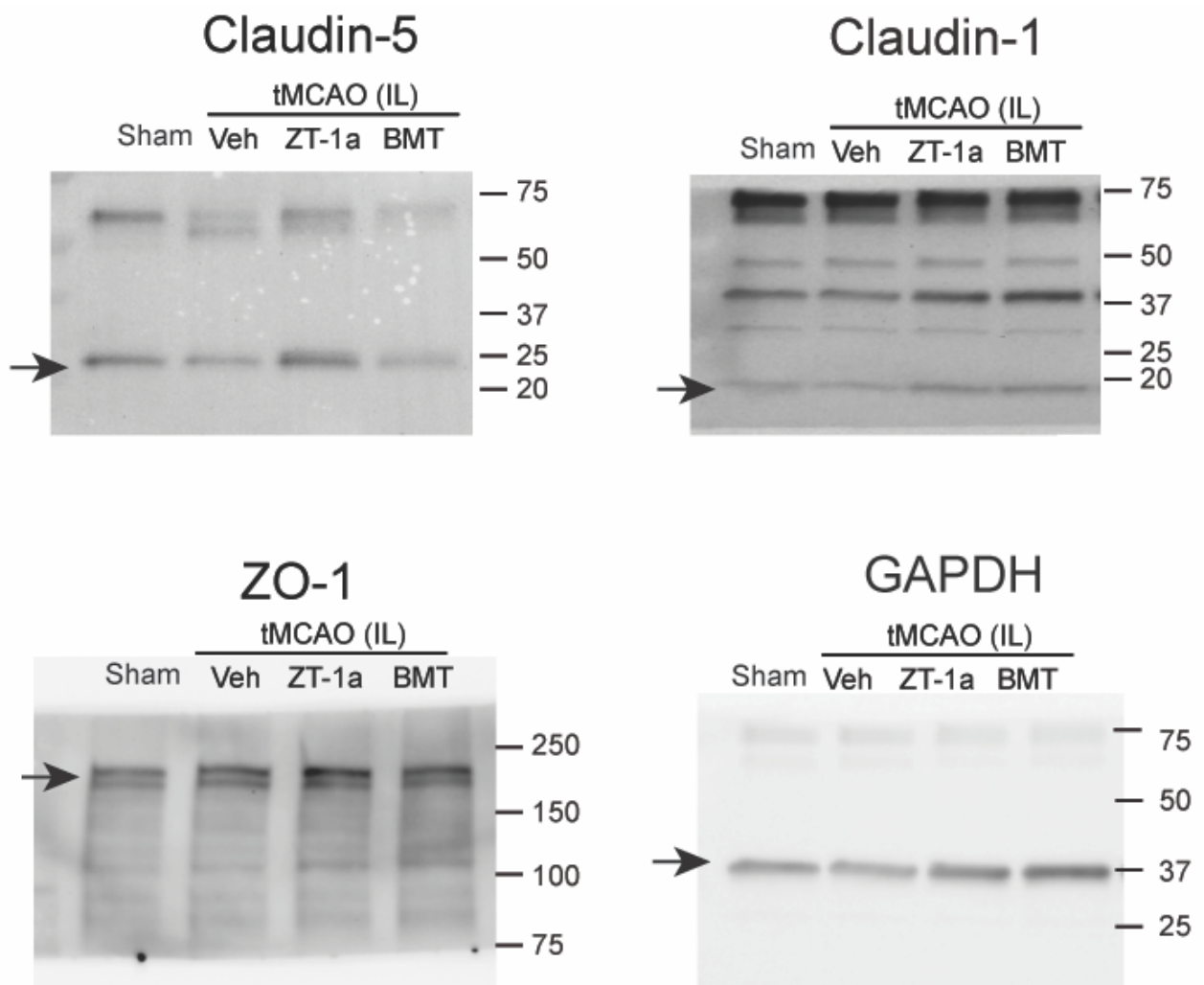
Dalian, Liaoning, China 116027

E-mail address: yanyin1208@126.com

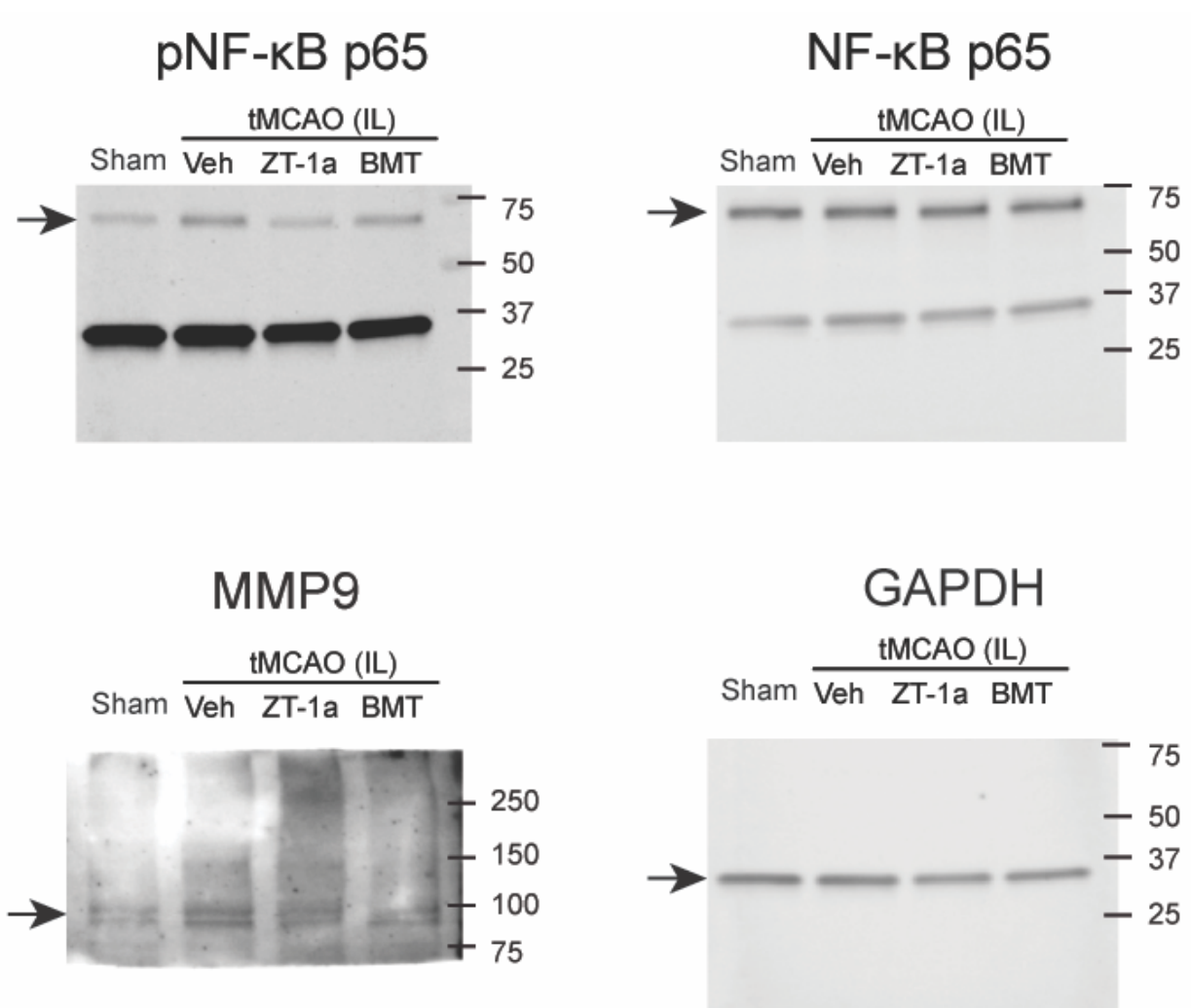
SPAK-NKCC1 blot of isolated ChP in **Figure 2f**.



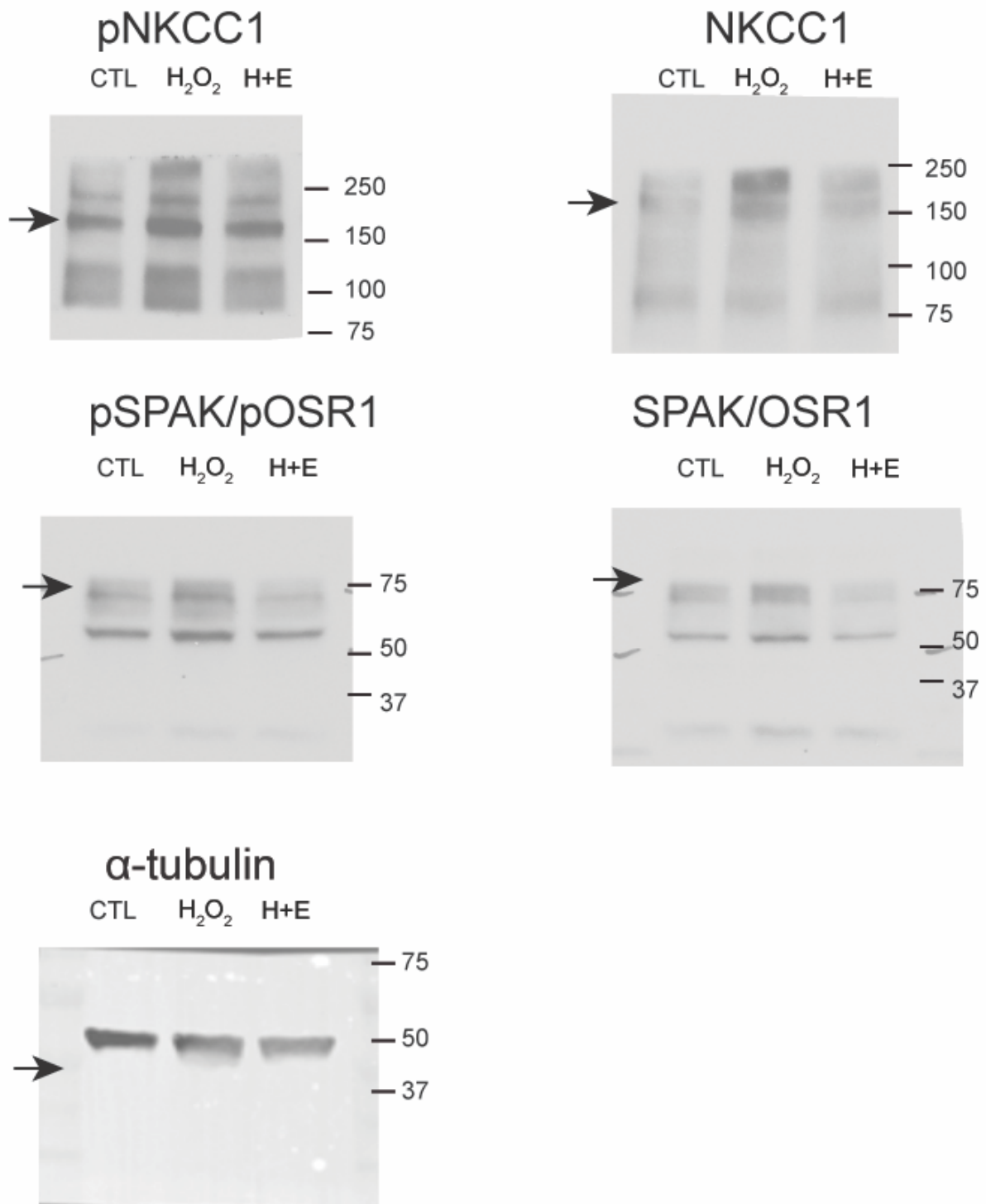
Claudin-1, Claudin-5 and ZO-1 blot of isolated ChP in **Figure 3e**.



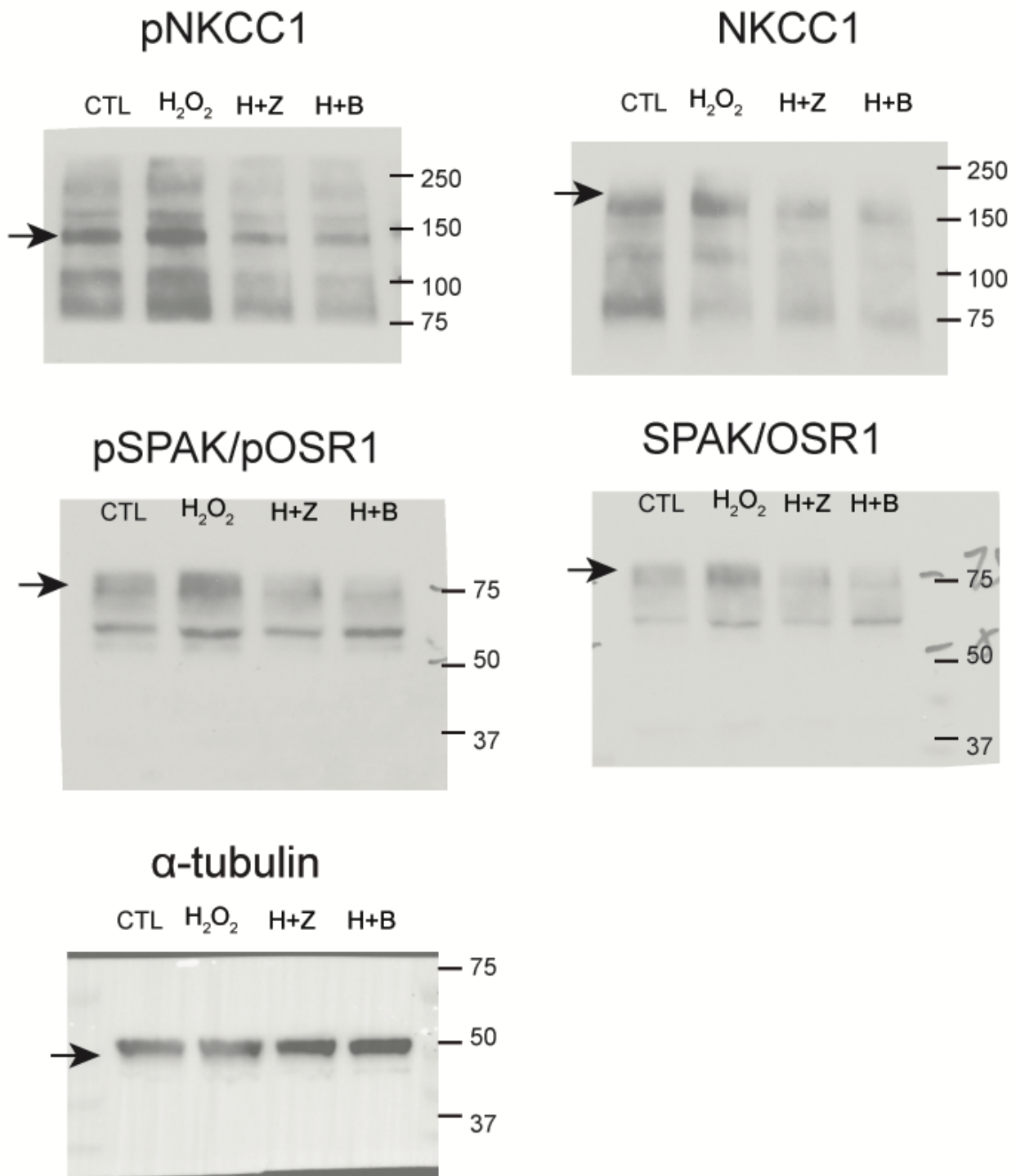
NF- κ B and MMP9 blot of isolated ChP in **Figure 4e**.



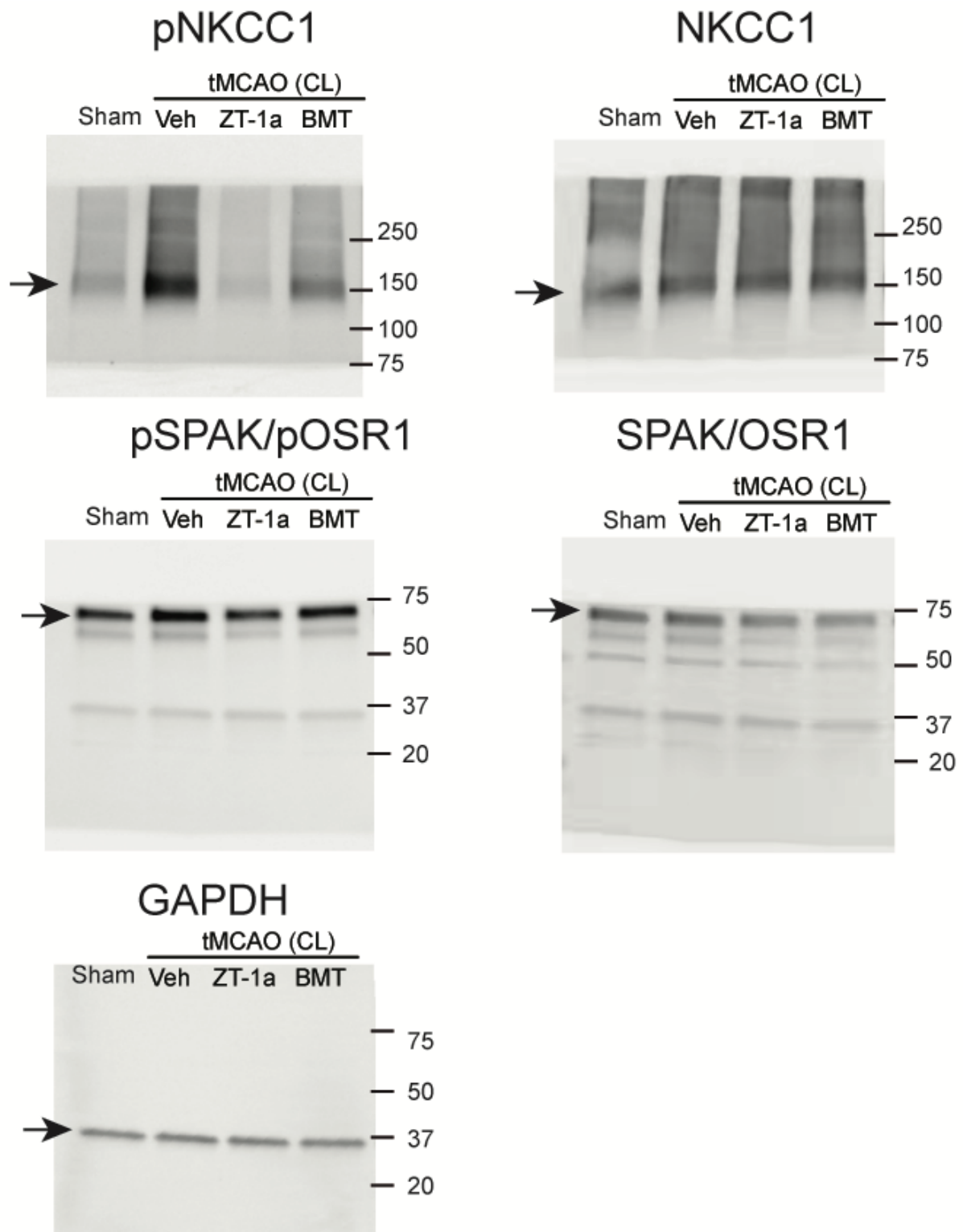
SPAK-NKCC1 blot of cultured neurons in **Figure 7g**.



SPAK-NKCC1 blot of cultured neurons in **Figure 7i**.



SPAK-NKCC1 blot of isolated ChP in **Supplementary Figure 2d**.



NF- κ B and MMP9 blot of isolated ChP in **Supplementary Figure 5e**.

