

Diagnostic Yield of Targeted Hearing Loss Gene Panel Sequencing
in a Large German Cohort with a Balanced Age Distribution
from a Single Diagnostic Center: An Eight-Year Study

Supplemental Digital Content 8.

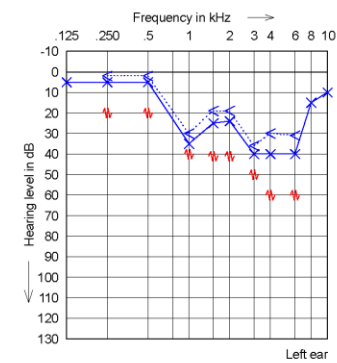
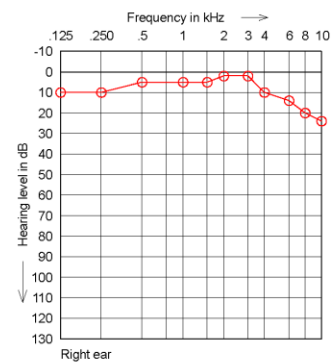
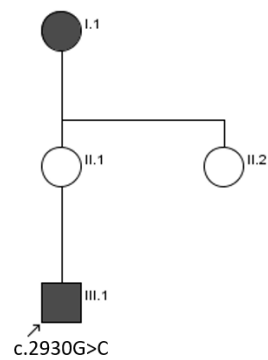
Pedigrees and audiograms of all solved cases with medically significant novel variants and medically significant variant reclassifications

1. Novel variants in solved cases (n=13)

ID	Pedigree	Audiogram	
41	<p data-bbox="176 867 275 927">SMPX c.140del</p>		
55	<p data-bbox="176 1273 386 1333">TMPRSS3 c.413C>A; c.965C>A</p>		

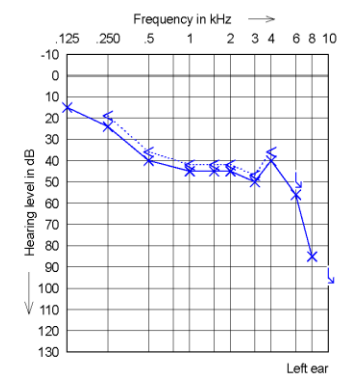
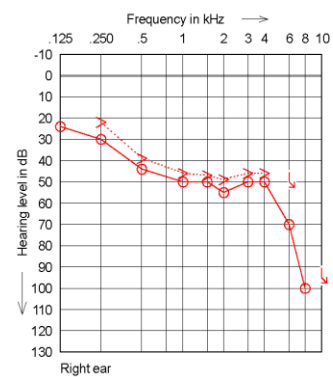
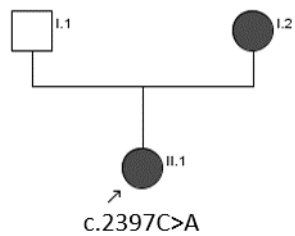
67

COL11A1
c.2930G>C



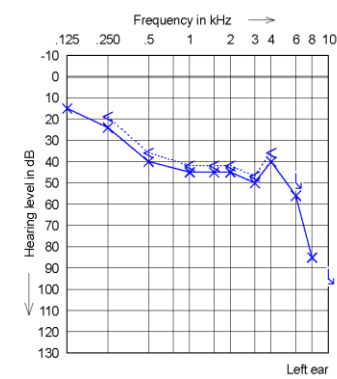
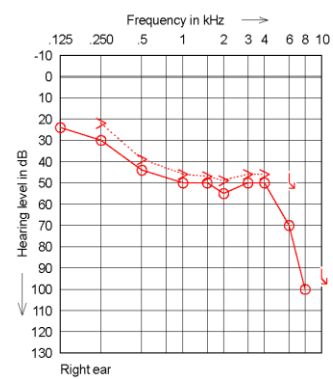
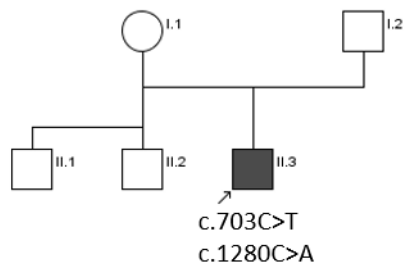
68

MYO6
c.2397C>A



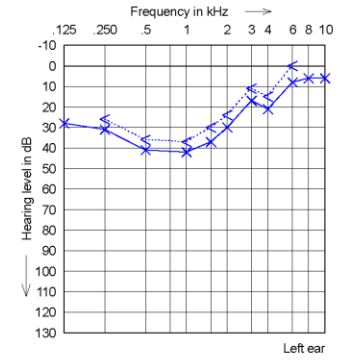
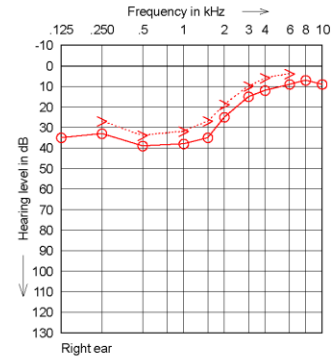
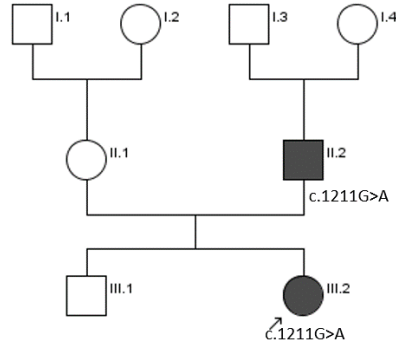
74

SLC26A4
c.703C>T; c.1280C>A



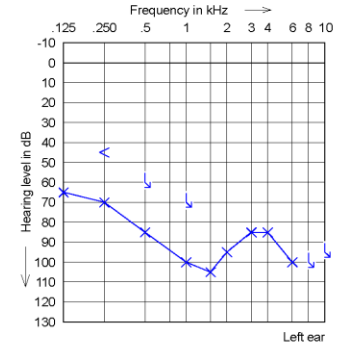
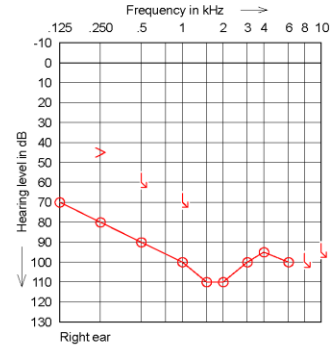
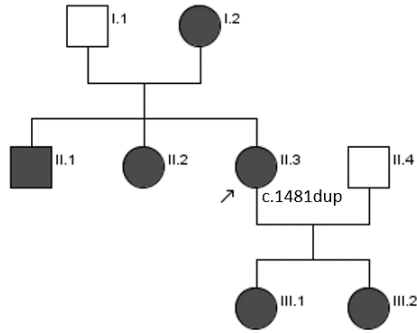
112

MYO7A
c.1211G>A



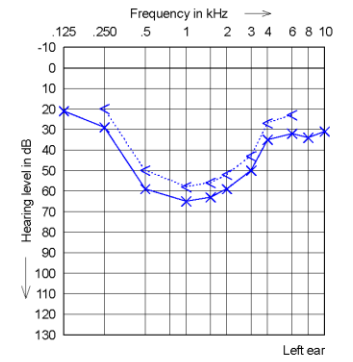
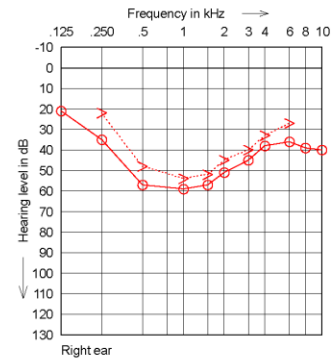
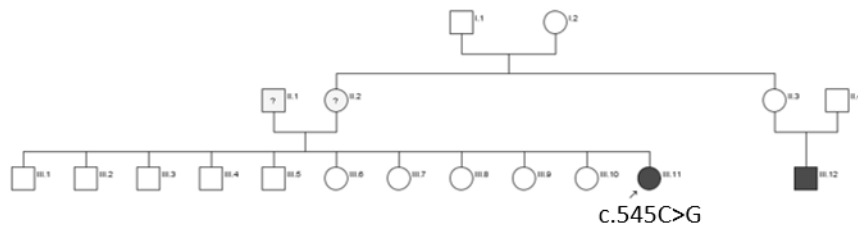
120

EYA4
c.1481dup



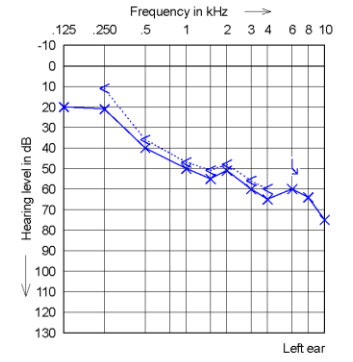
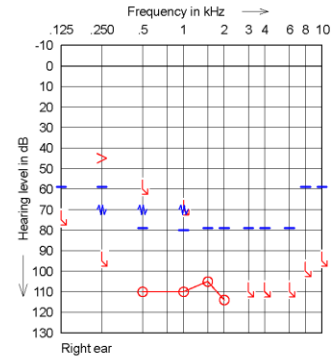
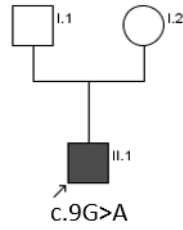
172

POU4F3
c.545C>G



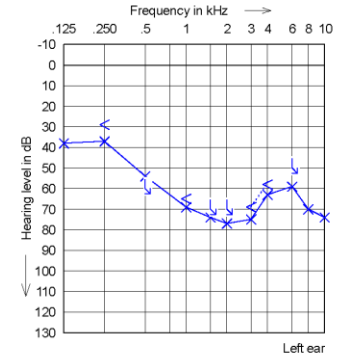
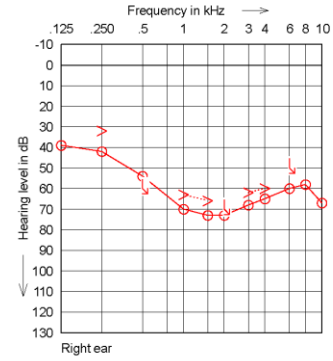
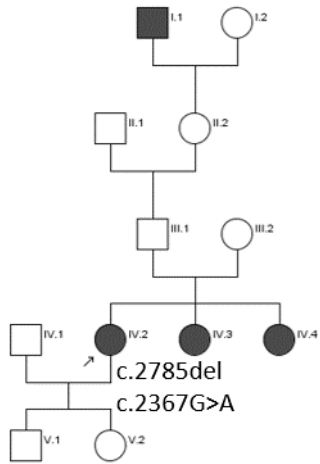
202

TFAP2A
c.9G>A



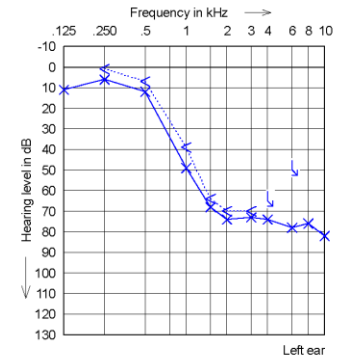
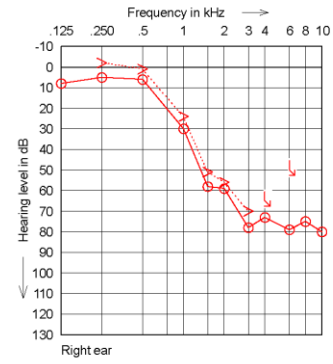
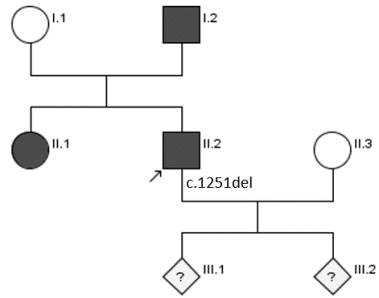
206

TECTA
c.2785del; c.2367G>A



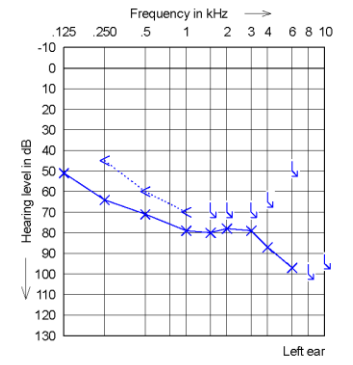
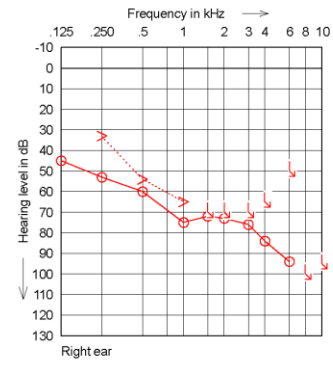
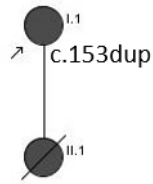
211

KCNQ4
c.1251del

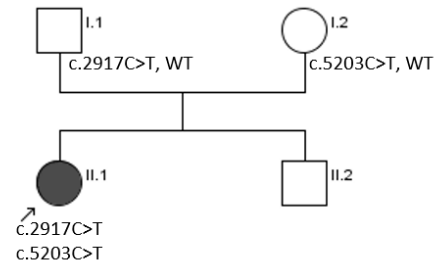


224

GATA3
c.153dup



299



OTOF
c.2719C>T; c.5203C>T

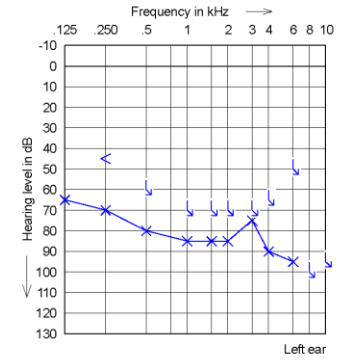
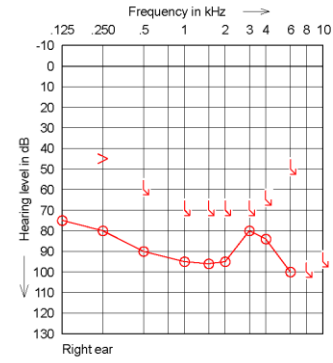
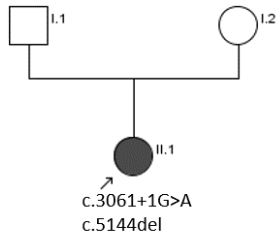


2. Medically significant variant reclassifications in solved cases (n=9)

ID	Pedigree	Audiogram	
32	<p style="text-align: center;">Pedigree</p> <p>COL4A3 c.4882T>G</p> <p>WT: COL4A3 WT</p>	<p style="text-align: center;">Audiogram</p> <p>Right ear</p> <p>Left ear</p>	
58	<p style="text-align: center;">Pedigree</p> <p>COL11A1 c.2644C>T</p>	<p style="text-align: center;">Audiogram</p> <p>Right ear</p> <p>Left ear</p>	

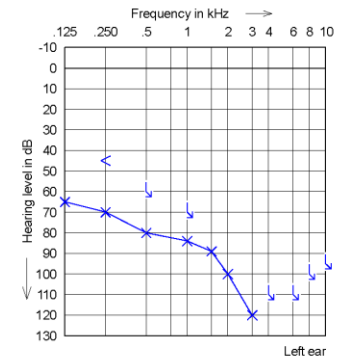
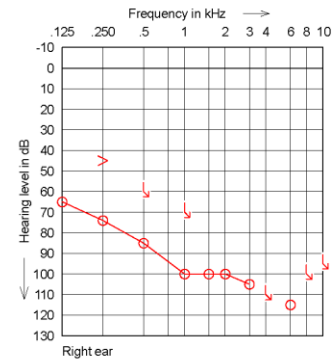
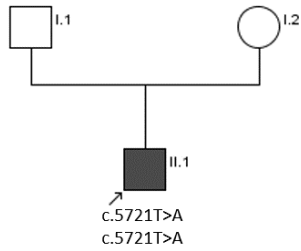
59

LOXHD1
c.3061+1G>A; c.5144del



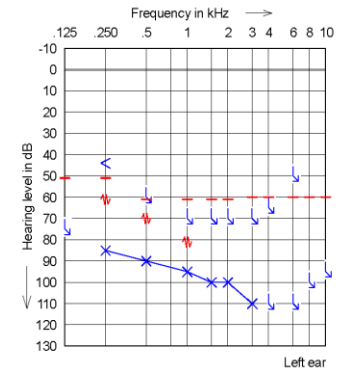
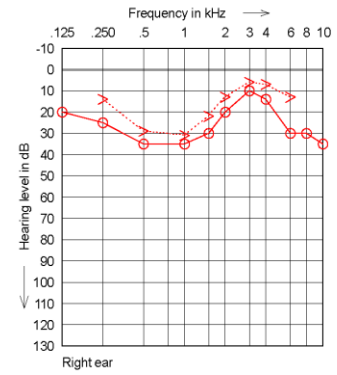
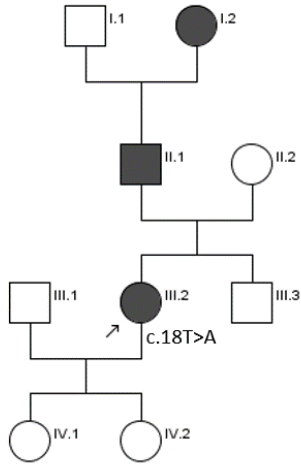
89

LOXHD1
c.5721T>A; c.5721T>A



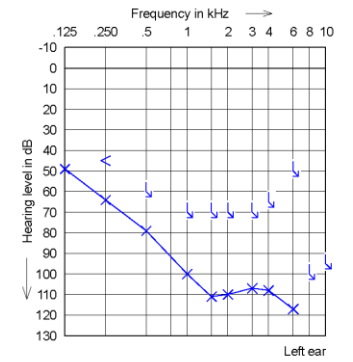
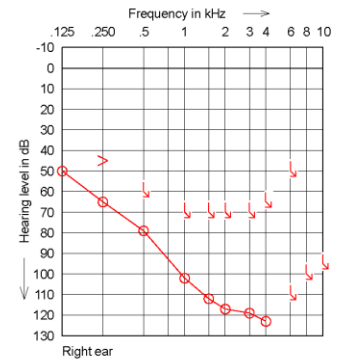
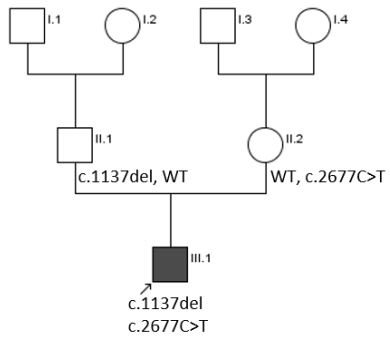
127

EDNRB
c.18T>A



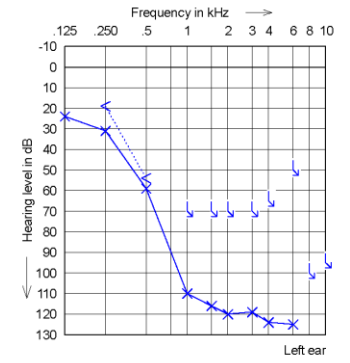
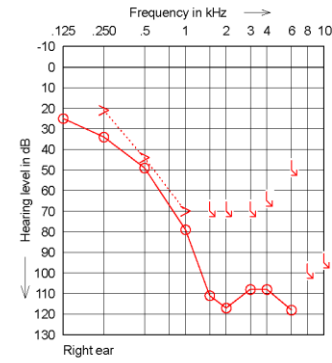
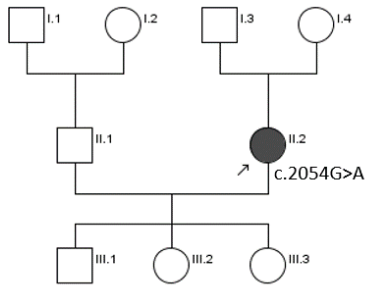
140

MYO15A
c.1137del; c.2677C>T



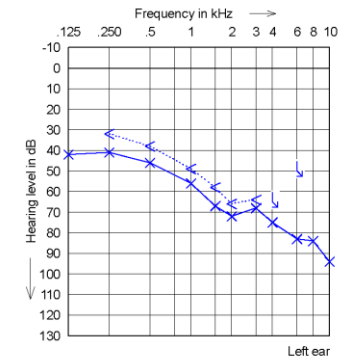
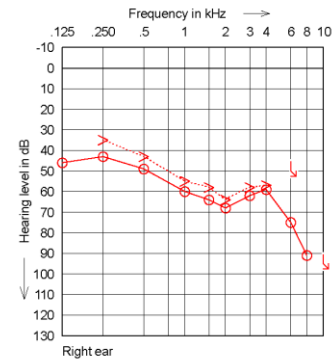
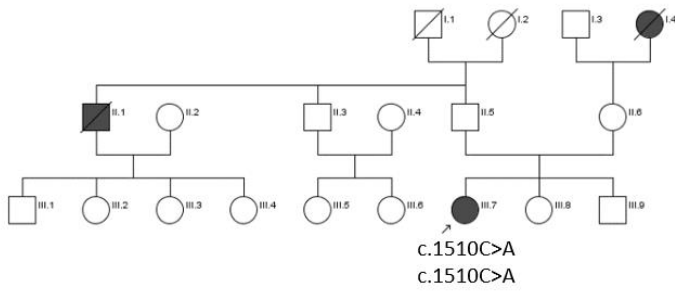
148

WFS1
c.2054G>A

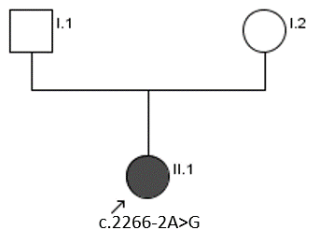


230

COL9A2
c.1510C>A; c.1510C>A



277



DIAPH3
c.2266-2A>G

