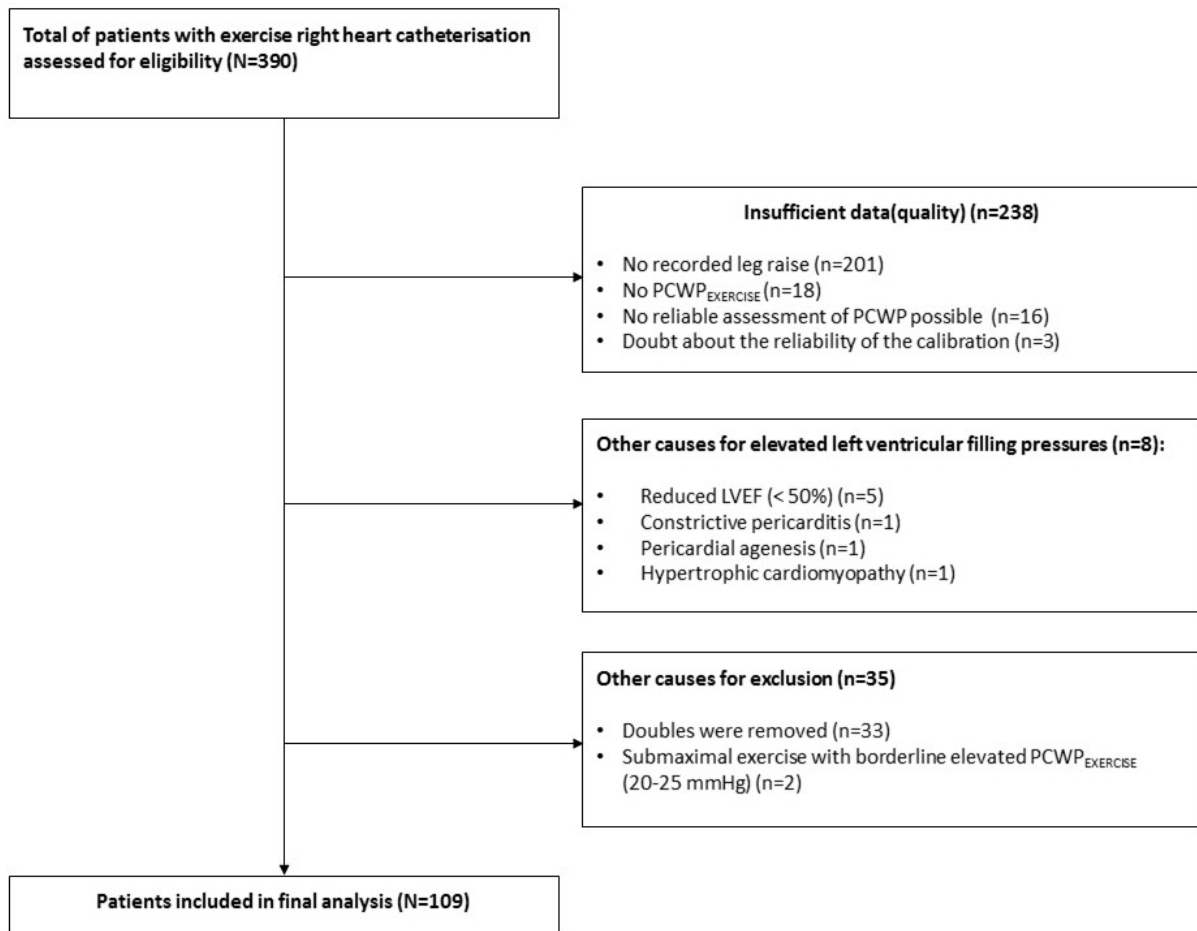


Supplemental Material

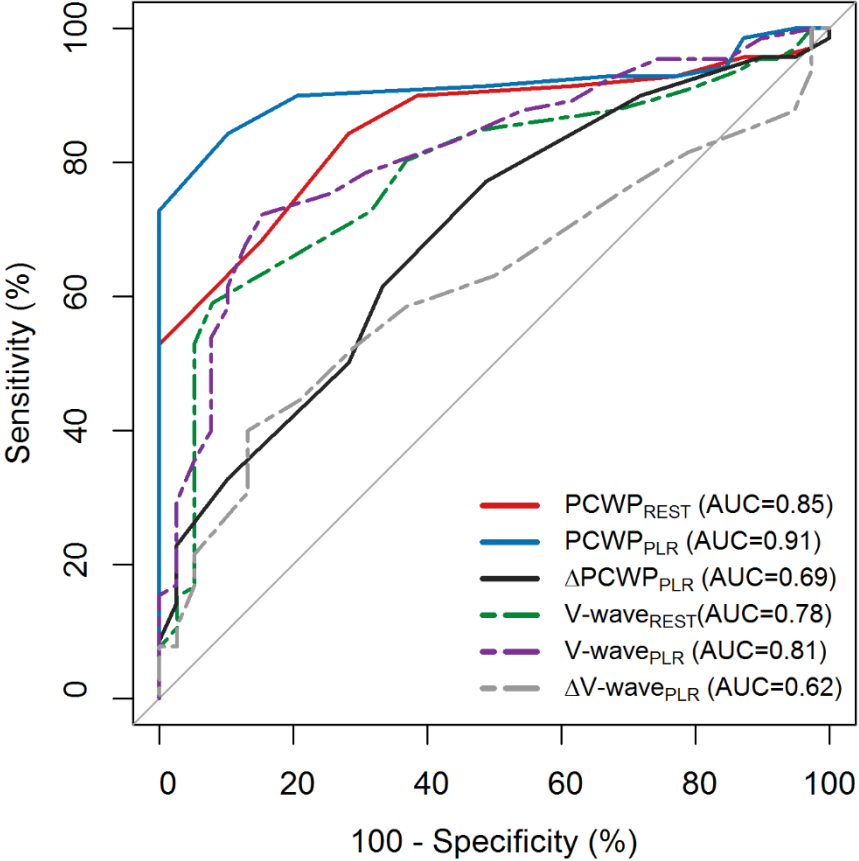
Supplemental Figures and Figure Legends I-III

Supplemental Figure I. Flowchart



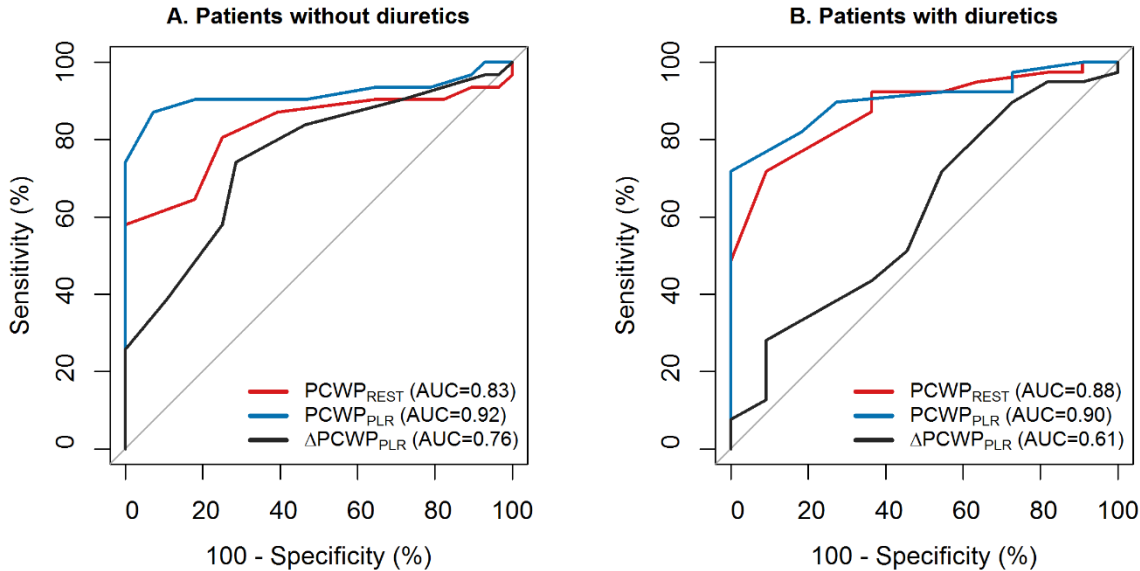
Supplemental Figure I Legend: Abbreviations: PCWP, pulmonary capillary wedge pressure; PCWP_{EXERCISE}, PCWP at peak exertion; LVEF, left ventricular ejection fraction.

Supplemental Figure II. ROC-curve analysis to diagnose HFpEF (occult- and manifest-HFpEF combined)



Supplemental Figure II Legend: Abbreviations: AUC, area under the curve; PCWP, pulmonary capillary wedge pressure; PLR, passive leg raise.

Supplemental Figure III. Influence of diuretics to diagnose HFpEF (occult- and manifest-HFpEF combined)



Supplemental Figure III Legend: Abbreviations: AUC, area under the curve; PCWP, pulmonary capillary wedge pressure; PLR, passive leg raise.

Supplemental Tables I-II

Supplemental Table I. Diagnoses of non-HFpEF patients

Diagnoses	n = 39
CTEPH	6 (15%)
CTED	7 (18%)
IPAH	6 (15%)
Asymptomatic PH-gene carriers	4 (10%)
Dyspnea e.c.i.	4 (10%)
Deconditioning / Obesity	4 (10%)
Fatigue post-pulmonary embolism	2 (5%)
Symptomatic atrial fibrillation	1 (3%)
Diffusion-disorder with MCTD	1 (3%)
Dilated pulmonary artery e.c.i.	1 (3%)
Post-viral dyspnea	1 (3%)
OSAS	1 (3%)
PVOD	1 (3%)

Subtext Supplemental Table I: Abbreviations: CTEPH, chronic trombo-embolic pulmonary hypertension; CTED, chronic thrombo-embolic disease; IPAH, idiopathic pulmonary arterial hypertension; PH, pulmonary hypertension; e.c.i., e cause ignota; MCTD, mixed connective tissue disease; OSAS, obstructive sleep apnea syndrome; PVOD, pulmonary veno-occlusive disease.

Supplemental Table II. Data external validation cohort

	non-HFpEF (n=24)	occult-HFpEF (n=18)
Age (years)	61 (12)	72 (9)
Gender (female)	11 (46%)	7 (39%)
BMI	27.2 (4.4)	33.0 (6.0)
NYHA		
1	2 (8%)	0 (0%)
2	14 (58%)	9 (50%)
3	7 (29%)	9 (50%)
4	1 (4%)	0 (0%)
H₂FPEF score		
Low (0-1)	8 (33%)	0 (0%)
Intermediate (2-5)	16 (67%)	13 (72%)
High likelihood (6-9)	0 (0%)	5 (28%)
PCWP measurements		
PCWP _{REST} (mmHg)	8 [6, 9]	12 [10, 13]
PCWP _{PLR} (mmHg)	12[10-13]	20 [16-22]
PCWP _{EXERCISE} (mmHg)	15[12-17]	30 [27-34]

Subtext Supplemental Table II: Abbreviations: PCWP_{REST}, pulmonary capillary wedge pressure at rest;

PCWP_{PLR}, PCWP at passive leg raise;