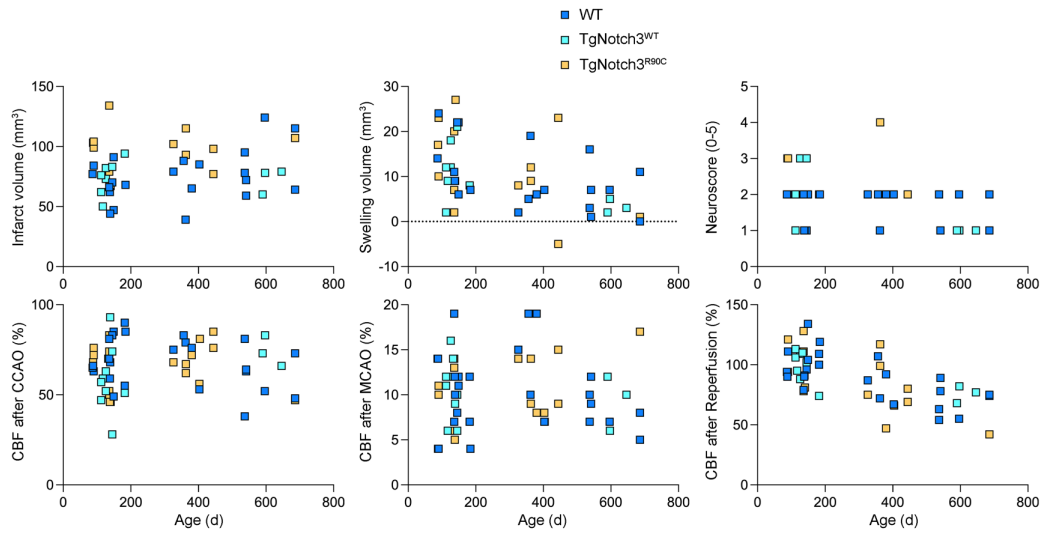
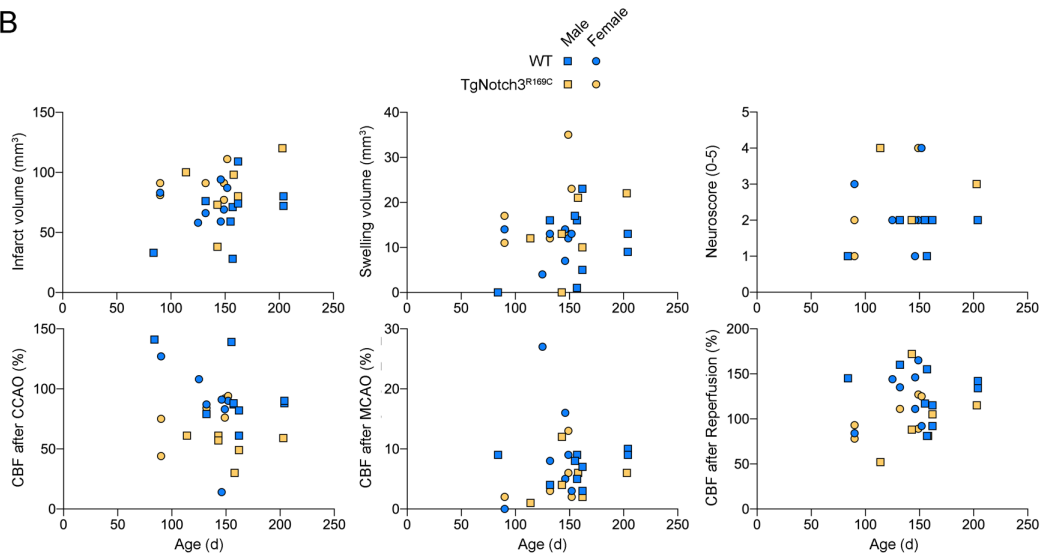


A



B



**Supplementary Figure 1.** Distribution of outcomes by age, genotype and sex after different stages of filament middle cerebral artery occlusion (fMCAO) in *Notch3<sup>R90C</sup>* (A) and *Notch3<sup>R169C</sup>* (B) cohorts. Vertical axis labels “CBF CCAO” refers to the CBF after CCA clamping, “CBF MCAO” refers to the CBF drop after filament insertion, and “CBF Reperfusion” refers to CBF after filament removal. Each data point represents one animal.

**Supplementary Table 1. Systemic physiology**

<b>Experiment</b>	<b>Genotype</b>	<b>pH</b>	<b>pCO<sub>2</sub></b>	<b>pO<sub>2</sub></b>	<b>BP</b>
Distal MCAO Area of CBF deficit	TgNotch3 <sup>WT</sup>	7.35±0.05	37±7	138±14	79±5
	TgNotch3 <sup>R90C</sup>	7.35±0.04	36±6	143±16	83±5
	WT	7.35±0.03	29±2	130±22	76±6
	TgNotch3 <sup>R169C</sup>	7.36±0.03	29±3	139±30	75±5
Peri-infarct SD	WT	7.37±0.02	37±3	136±27	90±4
	TgNotch3 <sup>R90C</sup>	7.38±0.02	35±4	135±20	84±11
	WT	7.35±0.02	37±3	111±10	91±4
	TgNotch3 <sup>R169C</sup>	7.35±0.04	35±4	106±7	91±8

Mean ± standard deviation.