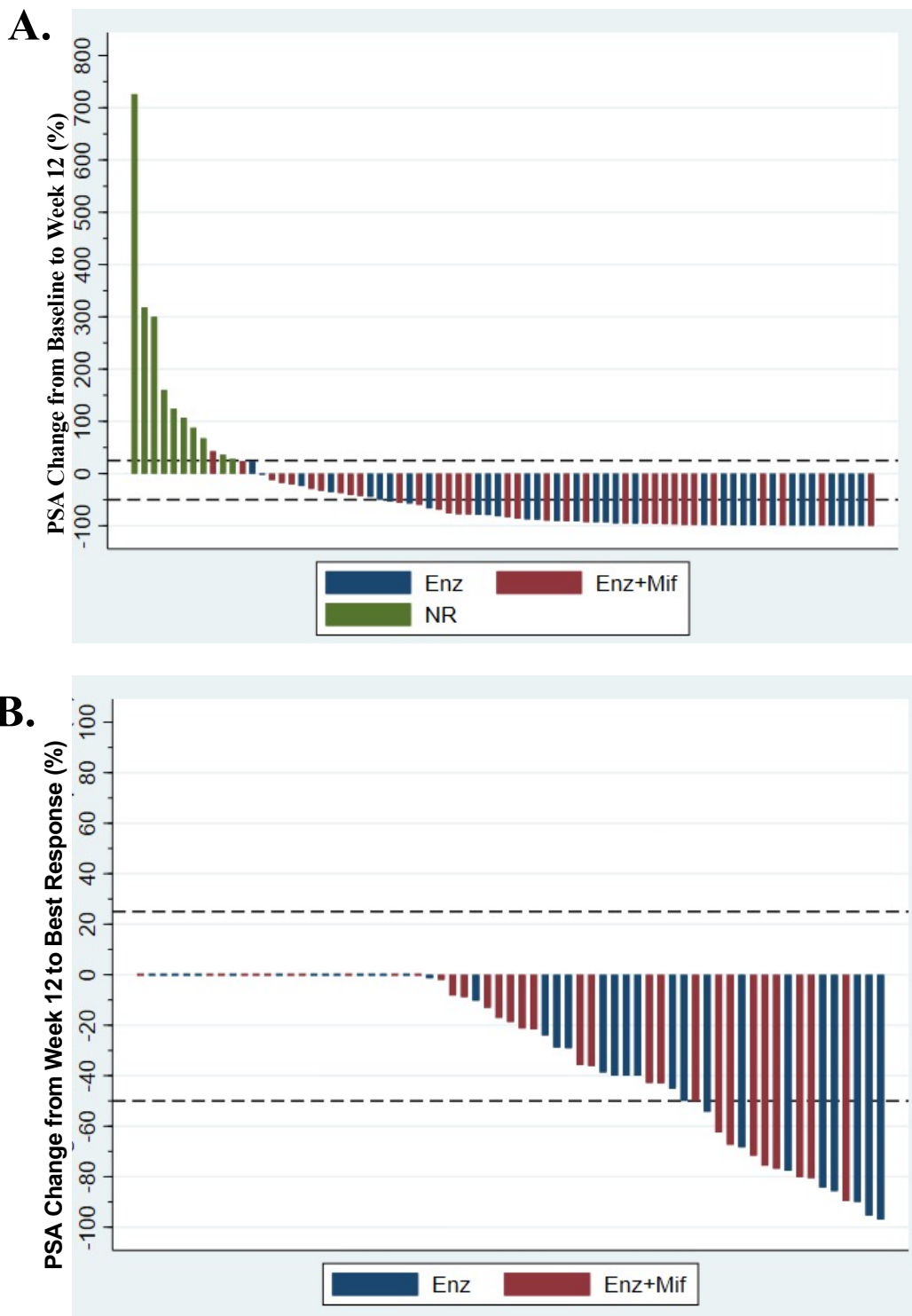


# Supplementary Figure 3



## Supplementary Figure 3: PSA response on study

Decrease in PSA by treatment arm. Waterfall plot showing percent reduction in PSA at (A) Baseline to week 12 comparing not randomized (NR) patients with those who ultimately proceeded to randomization with Enz or Enz+Mif (B) PSA response comparing 12-week after Enz alone lead-in prior to combination with Mif to best PSA response. Note for Panel A, this does not reflect decrease in PSA from drug combination, but rather decrease in PSA for patients randomized to each arm. Positive values represent patients whose baseline PSA was nadir value. For panel 2A, the patient for whom there was a >25% change in PSA from baseline to week 12 still proceeded to randomization due to the absolute change in PSA being <5 ng/mL.

Enz, enzalutamide; Enz alone, Enz 160mg daily after 12-week enzalutamide monotherapy lead in; Enz+Mif, Enz 120mg and Mif 300 mg daily after 12 week Enz lead-in; Mif, Mifepristone; NR, not randomized