

THE LANCET

Supplementary appendix

This appendix formed part of the original submission and has been peer reviewed. We post it as supplied by the authors.

Supplement to: COVID-19 National Preparedness Collaborators. Pandemic preparedness and COVID-19: an exploratory analysis of infection and fatality rates, and contextual factors associated with preparedness in 177 countries, from Jan 1, 2020, to Sept 30, 2021. *Lancet* 2022; published online Feb 1. [https://doi.org/10.1016/S0140-6736\(22\)00172-6](https://doi.org/10.1016/S0140-6736(22)00172-6).

1 Appendix 1: Supplemental methods and results for “**Pandemic**
2 **preparedness and COVID-19: an exploratory analysis of infection and**
3 **fatality rates and contextual factors associated with preparedness in**
4 **177 countries, from January 1, 2020, to September 30, 2021”**
5

6 This appendix provides further methodological and supplementary results for “**Pandemic**
7 **preparedness and COVID-19: an exploratory analysis of infection and fatality rates and**
8 **contextual factors associated with preparedness in 177 countries, from January 1, 2020, to**
9 **September 30, 2021.”**
10
11
12
13
14
15
16
17
18
19
20
21
22
23
24
25
26
27
28
29
30
31
32
33
34
35
36
37
38
39
40

41	Table of Contents	
42	Section 1: Abbreviations	4
43	Section 2: Additional tables	5
44	2.1 GATHER	5
45	2.2 Covariate name, spatiotemporal coverage, data source, notes, assessment of missingness, and	
46	summary statistics	8
47	2.3 Analysis of multicollinearity between stage 1 variables	12
48	2.4 Correlation between stage 1 variables	13
49	2.5 Correlation between stage 2 variables	14
50	2.6 Results of stage 1 and stage 2 regressions	40
51	2.6.1 Results of stage 1 multivariate regressions, January 1, 2020 – September 30, 2021	40
52	2.6.2 Results of stage 2 bivariate regressions, January 1, 2020 – September 30, 2021	41
53	2.6.3 Results of stage 1 multivariate regressions, January 1, 2020 – October 15, 2020	42
54	2.6.4 Results of stage 2 bivariate regressions, January 1, 2020 – October 15, 2020	43
55	Section 3: Additional methods	44
56	Figure 3.1.1: Modelling pathway for Stages 1-3 for IFR and infections	44
57	3.2 Proxy for previous exposure to beta coronaviruses	44
58	Figure 3.2.1: Number of known and probable beta coronavirus bat species per grid cell	45
59	3.3 PCA analysis for trust in government and corruption	45
60	Section 4: Sensitivity analyses	47
61	4.1 Using a correction of 1% of median for log transformations	47
62	Figure 4.1.1: Infections vs. IFR	47
63	Figure 4.1.2: Bivariate results	47
64	4.2 Using centred and scaled variables	48
65	Figure 4.2.1: Infections vs. IFR	48
66	Figure 4.2.2 Bivariate results	48
67	48
68	4.3 Including variant spread in stage 1	49
69	Figure 4.3.1: Infections vs. IFR	49
70	Figure 4.3.2: Bivariate results	49
71	Section 5: Supplemental results	50
72	5.1 Additional bivariate analyses	50
73	5.2 Additional intermediate pathway analyses looking at testing and mask use	51
74	5.3 Additional analyses for the first phase of the pandemic (pre-variants and vaccines, January 1,	
75	2020 – October 15, 2020)	52
76	Figure 5.3.1: Intermediate mobility pathways	52

77	5.4 Analyses for seroprevalence study locations (n=303 nationals and subnationals, n=101 nationals only)	53
78		
79	Figure 5.4.1: Seroprevalence study locations	53
80	Figure 5.4.2: Infections vs. IFR	54
81	Figure 5.4.3: Intermediate pathways, vaccine coverage, and mobility change, January 1, 2020 – September	
82	30, 2021	54
83	Figure 5.4.4 Bivariate results.....	55
84	5.5 Analyses using only reported COVID deaths	55
85	Figure 5.5.1: Infections vs. IFR	55
86	Figure 5.5.2 Bivariate plots	56
87	5.6 Scatter of raw data versus adjusted for stage 1 variables – IFR and cumulative infections	56
88	5.7 Using 2021 Global Health Security Index metrics in lieu of 2019 metrics, bivariate results.....	57
89	<i>Section 6: Author Contributions.....</i>	57
90	Managing the estimation or publications process.....	57
91	Writing the first draft of the manuscript	57
92	Primary responsibility for applying analytical methods to produce estimates.....	57
93	Primary responsibility for seeking, cataloguing, extracting, or cleaning data; designing or coding figures and	
94	tables.....	57
95	Providing data or critical feedback on data sources	58
96	Developing methods or computational machinery	58
97	Providing critical feedback on methods or results.....	58
98	Drafting the work or revising is critically for important intellectual content	58
99	Managing the overall research enterprise.....	58
100	<i>Section 7: References.....</i>	58
101		
102		

103	Section 1: Abbreviations
104	
105	BMI: body-mass index
106	COVID-19: coronavirus disease 2019
107	JEE: Joint External Evaluation
108	GBD: Global Burden of Diseases, Injuries, and Risk Factors Study
109	GHS Index: Global Health Security Index
110	HAQ Index: Healthcare Access and Quality Index
111	IFR: infection-fatality ratio
112	IHR: infection-hospitalisation ratio
113	IDR: infection-detection ratio
114	IHME: Institute for Health Metrics and Evaluation
115	PCA: principal component analysis
116	SARS-CoV2: severe acute respiratory syndrome coronavirus 2
117	WHO: World Health Organization
118	UHC effective coverage index: universal health coverage effective coverage index
119	UI: uncertainty interval
120	



Checklist of information that should be included in new reports of global health estimates

Item #	Checklist item	Reported on page #
Objectives and funding		
1	Define the indicator(s), populations (including age, sex, and geographic entities), and time period(s) for which estimates were made.	Summary. Main Text: Introduction, Methods (Overview).
2	List the funding sources for the work.	Summary. Main Text: Acknowledgments and declarations.
Data Inputs		
<i>For all data inputs from multiple sources that are synthesized as part of the study:</i>		
3	Describe how the data were identified and how the data were accessed.	Main Text: Methods. Supplementary Appendix, Section 3.
4	Specify the inclusion and exclusion criteria. Identify all ad-hoc exclusions.	Main Text: Methods.
5	Provide information on all included data sources and their main characteristics. For each data source used, report reference information or contact name/institution, population represented, data collection method, year(s) of data collection, sex and age range, diagnostic criteria or measurement method, and sample size, as relevant.	Supplementary Appendix: Section 2.0, Table 2. Main characteristics of data, metadata, and/or NIDs available through: http://ghdx.healthdata.org/ (upon publication)
6	Identify and describe any categories of input data that have potentially important biases (e.g., based on characteristics listed in item 5).	Main text: Limitations

		section. Supplementa ry appendix (biases for input data in each modelling step identified in each section)
<i>For data inputs that contribute to the analysis but were not synthesized as part of the study:</i>		
7	Describe and give sources for any other data inputs.	N/A
<i>For all data inputs:</i>		
8	Provide all data inputs in a file format from which data can be efficiently extracted (e.g., a spreadsheet rather than a PDF), including all relevant meta-data listed in item 5. For any data inputs that cannot be shared because of ethical or legal reasons, such as third-party ownership, provide a contact name or the name of the institution that retains the right to the data.	Available through: http://ghdx.healthdata.org/ (upon publication)
Data analysis		
9	Provide a conceptual overview of the data analysis method. A diagram may be helpful.	Main text: Methods
10	Provide a detailed description of all steps of the analysis, including mathematical formulae. This description should cover, as relevant, data cleaning, data pre-processing, data adjustments and weighting of data sources, and mathematical or statistical model(s).	Main text: Methods
11	Describe how candidate models were evaluated and how the final model(s) were selected.	Supplementa ry Appendix: Section 3
12	Provide the results of an evaluation of model performance, if done, as well as the results of any relevant sensitivity analysis.	Supplementa ry Appendix: Sections 3.0 & 4.0
13	Describe methods for calculating uncertainty of the estimates. State which sources of uncertainty were, and were not, accounted for in the uncertainty analysis.	Main Text: Methods; Supplementa ry Appendix
14	State how analytic or statistical source code used to generate estimates can be accessed.	Available through: http://ghdx.healthdata.org/ (upon publication)
Results and Discussion		
15	Provide published estimates in a file format from which data can be efficiently extracted.	Available through: http://ghdx.org/

		healthdata.org/ (upon publication)
16	Report a quantitative measure of the uncertainty of the estimates (e.g. uncertainty intervals).	Available through: http://ghdx.healthdata.org/ (upon publication)
17	Interpret results in light of existing evidence. If updating a previous set of estimates, describe the reasons for changes in estimates.	Main Text: Discussion
18	Discuss limitations of the estimates. Include a discussion of any modelling assumptions or data limitations that affect interpretation of the estimates.	Main Text: Limitations

125

126 2.2 Covariate name, spatiotemporal coverage, data source, notes, assessment of missingness, and summary statistics

Short name	Covariate name	Temporal coverage	Spatial coverage	Data source	Notes	N (%) missing	Median (IQR)	Range
Pneumonia RR	Relative risk of death from pneumonia divided by the average risk of death from pneumonia	2013-2019	National and subnational	Modelling COVID-19 scenarios for the United States ¹	Varies weekly	0 (0%)	0.93 (0.91 – 0.95)	0.76 – 1.22
Age	Age structure of the population (5-year age bins)	2020	National and subnational	Global Burden of Disease Study 2019 ²		0 (0%)	-	-
Altitude	% of population living below 100 m	2015	National and subnational	Global Burden of Disease Study 2019 ²		0 (0%)	30.4 (1.5 – 63.9)	0.0 – 100.0
Population density	% of population living above 1000 people/km ²	2020	National and subnational	Modelling COVID-19 scenarios for the United States ¹		0 (0%)	51.9 (36.2 – 69.6)	0.0 – 100.0
Air pollution	PM _{2.5} air pollution concentration (mg/m ³)	2019	National and subnational	Global Burden of Disease Study 2019 ²		0 (0%)	18.5 (10.2 – 34.2)	3.5 - 217.5
Smoking prevalence	Age-standardised tobacco smoking prevalence	2019	National and subnational	Global Burden of Disease Study 2019 ²		0 (0%)	0.17 (0.12 – 0.22)	0.04 -0.44
GDP	Gross domestic product per capita	2019	National and subnational	Global Burden of Disease Study 2019 ²		0 (0%)	15,722.8 (7345.9 – 39772.2)	131.8 – 102,793.9
BMI	Population-adjusted body-mass index	2019	National and subnational	Global Burden of Disease Study 2019 ²		0 (0%)	26.5 (24.5 – 28.2)	20.5 – 30.8
UHC	Universal health coverage	2019	Nationals	Global Burden of Disease Study 2019, Measuring Universal Health Coverage ^{2,3}	Included 2 subcomponents – communicable and non-communicable, maternal, and neonatal	0 (0%)	61.2 (49.6 – 72.7)	22.3 – 96.3
Mobility	Largest % change from a January 2020 baseline	2020-2021	National and subnational	Modelling COVID-19 scenarios for the United States ¹		0 (0%)	61.3 (51.2 – 72.9)	20.0 – 93.2
Mandates	Mean fraction of mandates on over period	2020-2021	National and subnational	Modelling COVID-19 scenarios for the United States ¹	Locations measured at the subnational level had a mandate in place if 2/3 of locations or more had it in place on a given date	1/361 (0.3%)	44.0 (33.3 – 49.5)	0.0 – 85.5

Testing	Mean testing per capita over the time period	2020-2021	National and subnational	Modeling COVID-19 scenarios for the United States ¹		0 (0%)	71.4 / 100,000 (21.5 / 100,000 – 200.7 / 100,000)	0.3 / 100,000 – 1713.3 / 100,000
Vaccine coverage	Maximum vaccine coverage over the time period	2021	National and subnational	Modeling COVID-19 scenarios for the United States ¹		0 (0%)	50.9 (27.4 – 65.0)	0.0 – 94.3
COPD	Age-standardised COPD prevalence	2019	National and subnational	Global Burden of Disease Study 2019 ²		0 (0%)	2.3 (2.0 - 3.2)	0.7-4.4
Cancer	Age-standardised cancer prevalence	2019	National and subnational	Global Burden of Disease Study 2019 ²		0 (0%)	5.6 (4.3- 8.1)	2.1 – 20.8
Interpersonal trust	Trust in other people	2017-2021	National only	WORLD VALUES SURVEY WAVE 7 ⁴	Trust coded as those who answered “most people can be trusted” on Q57	102/177 (57.6%)	20.7 (11.9 – 32.9)	2.1 – 77.4
Trust in science	Trust in science	2018	National only	Wellcome Global Monitor Survey ⁵	Those that answered “A lot” to trusting science	40/177 (22.6%)	29.8 (23.0 – 39.4)	6.7 – 76.0
Trust in government - WVS	Trust in one’s government	2017-2021	National only	WORLD VALUES SURVEY WAVE 7 ⁴	Coded as “A great deal” or “Quite a lot” on Q71 asking about confidence in government	102/177 (57.6%)	40.1 (37.3 – 51.7)	0.0 – 95.2
Trust in government - Gallup	Trust in one’s government		National only	Gallup World Poll ⁶		46/177 (26%)	53.7 (39.1 – 68.9)	15.7 – 99.3
Governmental Corruption - CPI	Perceived governmental corruption	2020	National only	Transparency International ⁷		10/177 (5.6%)	40.0 (29.0 – 56.5)	12.0 – 88.0
JEE	Joint External Evaluation Components and Prevent Epidemics’ Preparedness overall score	2016-2021	National only	WHO and Prevent Epidemics ⁸	Only places that have completed a JEE; overall score is a summary variable of JEE components created by Prevent Epidemics	89/177 (50.3%)	Overall score: 50.0 (38.0 -69.3)	Overall score: 26.0 – 93.0

GHSI	Global Health Security Index components and overall score	2019	National only	Global Health Security Index 2019 ⁹	Weighted average of the other components	7/177 (4.0%)	Overall score: 39.3 (31.9-51.6)	Overall score: 16.2 – 83.5
GINI	Gini Index		National only	SWIID v8.2 ¹⁰ & Bosancinau ¹¹		27/177 (15.3%)	38.38 (33.10 – 44.05)	23.68 – 65.11
HAQ Index	Healthcare Access and Quality Index	2019	National only	Global Burden of Disease Study 2019 ²		0 (0%)	63.3 (42.4 -79.5)	12.8 – 96.8
Electoral populism	Populism-based campaign run		National only	Populism in Power ¹² & Bosancinau ¹¹	Whether a democratically elected head of government ran a populist campaign	0 (0%)	0 (0 – 0)	0 -1
Government effectiveness			National only	World Bank Indicators ¹³ & Bosancinau ¹¹	Perceived quality of public services, its provision and providers	1/177 (0.6%)	-0.09 (-0.66 – 0.57)	-2.45 – 2.23
State fragility	State Fragility Index		National only	State Fragility Index ¹⁴ & Bosancinau ¹¹	Incapacity to provide essential public goods and services and cope with shocks	19/177 (10.7%)	7.0 (3.0 – 12.0)	0.0 – 24.0
Index of federalism		2017	National only	Database of Political Institutions ¹⁵	Extent to which power and decision-making processes are decentralised	54/177 (30.5%)	-0.07 (-0.59 – 0.68)	-1.03 – 1.51
Bureaucracy corruption	Public sector corruption		National only	Varieties of Democracy Institute, Version 10 ^{16,17}	Pervasiveness of bureaucratic corruption in the public sector	13/177 (7.3%)	0.48 (0.19 – 0.72)	0 – 0.97
EDI	Electoral Democracy Index	2020	National only	Varieties of Democracy Institute, Version 11 ^{18,19}	Aggregate indicator combining free and fair elections, free association, freedom of expression, and access to alternative information, suffrage, and elected officials	13/177 (7.3%)	0.32 (0.05 – 0.63)	0.00 – 0.86

Beds per capita	Number of hospital beds per capita before start of the pandemic	2019	National and subnational	Global Burden of Disease Study 2019 ²		0 (0%)	206.0 / 100,000 (102.7 / 100,000 – 328.3 / 100,000)	18.4 / 100,000 – 1185.9 / 100,000
Health spending per capita	Total health expenditure per capita	2020	National only	Global Burden of Disease Health Financing Collaborator Network ²⁰	Mean value	0 (0%)	538.1 (87.1 – 1744.7)	5.0 – 6869.6
Government health spending per capita	Government health spending per capita	2020	National only	Global Burden of Disease Health Financing Collaborator Network ²⁰	Mean value	0 (0%)	932.7 (252.2- 2518.3)	23.5 – 12131.9
Bats	Average number of beta-coronavirus host bat species in a given location	2021 Bats & Ranges	National only	IUCN ²¹ & Verena Consortium ²²	See section 3.1 below	0 (0%)	11.5 (4.2 - 16.6)	0.0 – 42.0

127

128

129
130

2.3 Analysis of multicollinearity between stage 1 variables

Covariates	Variance inflation factors	
	Cumulative infections per capita	IFR
GDP per capita	1.280	2.860
% of population living above 1000 people/km ²	1.242	1.181
Average number of beta-coronavirus host bat species	1.105	1.299
% of population living below 100 m	1.245	-
BMI	-	2.432
Smoking prevalence	-	1.486
PM _{2.5} air pollution concentration (mg/m ³)	-	1.455
COPD prevalence	-	1.703
Cancer prevalence	-	1.215

131
132

133

2.4 Correlation between stage 1 variables

	GDP per capita	% of population living above 1000 people/km ²	% of population living below 100 m	Average number of beta-coronavirus host bat species	BMI	PM _{2.5} air pollution concentration (mg/m ³)	Smoking prevalence	COPD prevalence	Cancer prevalence
GDP per capita	1	0.343	0.135	-0.380	0.709	-0.594	0.417	0.336	0.449
% of population living above 1000 people/km ²	0.343	1	0.231	-0.122	0.287	-0.205	0.054	0.095	0.224
% of population living below 100 m	0.135	0.231	1	-0.063	-	-	-	-	-
Average number of beta-coronavirus host bat species	-0.380	-0.122	-0.063	1	-0.526	0.345	-0.077	-0.102	-0.087
BMI	0.709	0.287	-	-0.526	1	-0.584	0.193	0.117	0.446
PM _{2.5} air pollution concentration (mg/m ³)	-0.594	-0.205	-	0.345	-0.584	1	-0.198	-0.304	-0.268
Smoking prevalence	0.417	0.054	-	-0.077	0.193	-0.198	1	0.224	0.420
COPD prevalence	0.336	0.095	-	-0.102	0.117	-0.304	0.224	1	-0.166
Cancer prevalence	0.449	0.224	-	-0.087	0.446	-0.268	0.420	-0.166	1

134

135

136

137

138

2.5 Correlation between stage 2 variables

First variable	Correlated variable	Correlation	P-value
Electoral democracy index	Electoral populism	0.004	0.9598
Electoral democracy index	Global health security index compliance with international norms score	0.404	<0.0001
Electoral democracy index	Global health security index detect score	0.481	<0.0001
Electoral democracy index	Global health security index health sector score	0.464	<0.0001
Electoral democracy index	Global health security index overall score	0.558	<0.0001
Electoral democracy index	Global health security index prevent score	0.476	<0.0001
Electoral democracy index	Global health security index respond score	0.417	<0.0001
Electoral democracy index	Global health security index risk environment score	0.635	<0.0001
Electoral democracy index	Government corruption - PCA	-0.721	<0.0001
Electoral democracy index	Government effectiveness	0.631	<0.0001
Electoral democracy index	Government health spending per capita	0.566	<0.0001
Electoral democracy index	Health spending per capita	0.568	<0.0001
Electoral democracy index	Healthcare Access and Quality Index	0.512	<0.0001
Electoral democracy index	Hospital beds per capita	0.382	<0.0001
Electoral democracy index	Income inequality	-0.342	<0.0001
Electoral democracy index	Interpersonal trust	0.416	0.0002
Electoral democracy index	Joint external evaluation detect score	0.359	0.0006
Electoral democracy index	Joint external evaluation other score	0.359	0.0006
Electoral democracy index	Joint external evaluation overall score	0.335	0.0014
Electoral democracy index	Joint external evaluation prevent score	0.343	0.0011
Electoral democracy index	Joint external evaluation respond score	0.259	0.0149
Electoral democracy index	State fragility	-0.630	<0.0001
Electoral democracy index	Trust in government - PCA	-0.317	0.0002
Electoral democracy index	Trust in science	0.273	0.0013
Electoral democracy index	Universal health coverage	0.544	<0.0001
Electoral democracy index	Universal health coverage - CMNNs	0.466	<0.0001

Electoral democracy index	Universal health coverage - NCDs	0.516	<0.0001
Electoral populism	Electoral democracy index	0.004	0.9598
Electoral populism	Global health security index compliance with international norms score	0.105	0.1738
Electoral populism	Global health security index detect score	0.136	0.0774
Electoral populism	Global health security index health sector score	0.261	0.0006
Electoral populism	Global health security index overall score	0.178	0.0201
Electoral populism	Global health security index prevent score	0.158	0.0395
Electoral populism	Global health security index respond score	0.136	0.0763
Electoral populism	Global health security index risk environment score	0.092	0.2309
Electoral populism	Government corruption - PCA	-0.015	0.8482
Electoral populism	Government effectiveness	0.055	0.4657
Electoral populism	Government health spending per capita	0.063	0.4033
Electoral populism	Health spending per capita	0.083	0.2712
Electoral populism	Healthcare Access and Quality Index	0.164	0.0288
Electoral populism	Hospital beds per capita	0.155	0.0392
Electoral populism	Income inequality	-0.066	0.4256
Electoral populism	Interpersonal trust	-0.133	0.2536
Electoral populism	Joint external evaluation detect score	0.109	0.3121
Electoral populism	Joint external evaluation other score	0.092	0.3930
Electoral populism	Joint external evaluation overall score	0.094	0.3861
Electoral populism	Joint external evaluation prevent score	0.070	0.5189
Electoral populism	Joint external evaluation respond score	0.098	0.3653
Electoral populism	State fragility	-0.116	0.1464
Electoral populism	Trust in government - PCA	-0.082	0.3447
Electoral populism	Trust in science	-0.026	0.7610
Electoral populism	Universal health coverage	0.114	0.1320
Electoral populism	Universal health coverage - CMNNs	0.181	0.0157
Electoral populism	Universal health coverage - NCDs	0.147	0.0506
Global health security index compliance with international norms score	Electoral democracy index	0.404	<0.0001

Global health security index compliance with international norms score	Electoral populism	0.105	0.1738
Global health security index compliance with international norms score	Global health security index detect score	0.598	<0.0001
Global health security index compliance with international norms score	Global health security index health sector score	0.563	<0.0001
Global health security index compliance with international norms score	Global health security index overall score	0.714	<0.0001
Global health security index compliance with international norms score	Global health security index prevent score	0.600	<0.0001
Global health security index compliance with international norms score	Global health security index respond score	0.579	<0.0001
Global health security index compliance with international norms score	Global health security index risk environment score	0.363	<0.0001
Global health security index compliance with international norms score	Government corruption - PCA	-0.396	<0.0001
Global health security index compliance with international norms score	Government effectiveness	0.432	<0.0001
Global health security index compliance with international norms score	Government health spending per capita	0.429	<0.0001
Global health security index compliance with international norms score	Health spending per capita	0.442	<0.0001
Global health security index compliance with international norms score	Healthcare Access and Quality Index	0.316	<0.0001
Global health security index compliance with international norms score	Hospital beds per capita	0.249	0.0011
Global health security index compliance with international norms score	Income inequality	-0.297	0.0003
Global health security index compliance with international norms score	Interpersonal trust	0.312	0.0073
Global health security index compliance with international norms score	Joint external evaluation detect score	0.517	<0.0001

Global health security index compliance with international norms score	Joint external evaluation other score	0.447	<0.0001
Global health security index compliance with international norms score	Joint external evaluation overall score	0.486	<0.0001
Global health security index compliance with international norms score	Joint external evaluation prevent score	0.495	<0.0001
Global health security index compliance with international norms score	Joint external evaluation respond score	0.416	0.0001
Global health security index compliance with international norms score	State fragility	-0.345	<0.0001
Global health security index compliance with international norms score	Trust in government - PCA	0.043	0.6209
Global health security index compliance with international norms score	Trust in science	0.245	0.0041
Global health security index compliance with international norms score	Universal health coverage	0.342	<0.0001
Global health security index compliance with international norms score	Universal health coverage - CMNNs	0.272	0.0003
Global health security index compliance with international norms score	Universal health coverage - NCDs	0.319	<0.0001
Global health security index detect score	Electoral democracy index	0.481	<0.0001
Global health security index detect score	Electoral populism	0.136	0.0774
Global health security index detect score	Global health security index compliance with international norms score	0.598	<0.0001
Global health security index detect score	Global health security index health sector score	0.727	<0.0001
Global health security index detect score	Global health security index overall score	0.883	<0.0001
Global health security index detect score	Global health security index prevent score	0.747	<0.0001
Global health security index detect score	Global health security index respond score	0.676	<0.0001
Global health security index detect score	Global health security index risk environment score	0.499	<0.0001
Global health security index detect score	Government corruption - PCA	-0.471	<0.0001
Global health security index detect score	Government effectiveness	0.560	<0.0001
Global health security index detect score	Government health spending per capita	0.522	<0.0001

Global health security index detect score	Health spending per capita	0.541	<0.0001
Global health security index detect score	Healthcare Access and Quality Index	0.510	<0.0001
Global health security index detect score	Hospital beds per capita	0.326	<0.0001
Global health security index detect score	Income inequality	-0.276	0.0007
Global health security index detect score	Interpersonal trust	0.279	0.0169
Global health security index detect score	Joint external evaluation detect score	0.702	<0.0001
Global health security index detect score	Joint external evaluation other score	0.663	<0.0001
Global health security index detect score	Joint external evaluation overall score	0.670	<0.0001
Global health security index detect score	Joint external evaluation prevent score	0.683	<0.0001
Global health security index detect score	Joint external evaluation respond score	0.555	<0.0001
Global health security index detect score	State fragility	-0.537	<0.0001
Global health security index detect score	Trust in government - PCA	-0.123	0.1576
Global health security index detect score	Trust in science	0.157	0.0697
Global health security index detect score	Universal health coverage	0.526	<0.0001
Global health security index detect score	Universal health coverage - CMNNs	0.460	<0.0001
Global health security index detect score	Universal health coverage - NCDs	0.510	<0.0001
Global health security index health sector score	Electoral democracy index	0.464	<0.0001
Global health security index health sector score	Electoral populism	0.261	0.0006
Global health security index health sector score	Global health security index compliance with international norms score	0.563	<0.0001
Global health security index health sector score	Global health security index detect score	0.727	<0.0001
Global health security index health sector score	Global health security index overall score	0.913	<0.0001
Global health security index health sector score	Global health security index prevent score	0.847	<0.0001
Global health security index health sector score	Global health security index respond score	0.780	<0.0001
Global health security index health sector score	Global health security index risk environment score	0.673	<0.0001
Global health security index health sector score	Government corruption - PCA	-0.603	<0.0001
Global health security index health sector score	Government effectiveness	0.695	<0.0001
Global health security index health sector score	Government health spending per capita	0.697	<0.0001
Global health security index health sector score	Health spending per capita	0.712	<0.0001
Global health security index health sector score	Healthcare Access and Quality Index	0.721	<0.0001
Global health security index health sector score	Hospital beds per capita	0.445	<0.0001

Global health security index health sector score	Income inequality	-0.463	<0.0001
Global health security index health sector score	Interpersonal trust	0.561	<0.0001
Global health security index health sector score	Joint external evaluation detect Score	0.796	<0.0001
Global health security index health sector score	Joint external evaluation other score	0.796	<0.0001
Global health security index health sector score	Joint external evaluation overall score	0.811	<0.0001
Global health security index health sector score	Joint external evaluation prevent score	0.790	<0.0001
Global health security index health sector score	Joint external evaluation respond score	0.749	<0.0001
Global health security index health sector score	State fragility	-0.653	<0.0001
Global health security index health sector score	Trust in government - PCA	-0.086	0.3206
Global health security index health sector score	Trust in science	0.343	<0.0001
Global health security index health sector score	Universal health coverage	0.731	<0.0001
Global health security index health sector score	Universal health coverage - CMNNs	0.668	<0.0001
Global health security index health sector score	Universal health coverage - NCDs	0.722	<0.0001
Global health security index overall score	Electoral democracy index	0.558	<0.0001
Global health security index overall score	Electoral populism	0.178	0.0201
Global health security index overall score	Global health security index compliance with international norms score	0.714	<0.0001
Global health security index overall score	Global health security index detect score	0.883	<0.0001
Global health security index overall score	Global health security index health sector score	0.913	<0.0001
Global health security index overall score	Global health security index prevent score	0.913	<0.0001
Global health security index overall score	Global health security index respond score	0.861	<0.0001
Global health security index overall score	Global health security index risk environment score	0.718	<0.0001
Global health security index overall score	Government corruption - PCA	-0.666	<0.0001
Global health security index overall score	Government effectiveness	0.758	<0.0001
Global health security index overall score	Government health spending per capita	0.705	<0.0001
Global health security index overall score	Health spending per capita	0.728	<0.0001
Global health security index overall score	Healthcare Access and Quality Index	0.705	<0.0001
Global health security index overall score	Hospital beds per capita	0.431	<0.0001
Global health security index overall score	Income inequality	-0.424	<0.0001
Global health security index overall score	Interpersonal trust	0.547	<0.0001
Global health security index overall score	Joint external evaluation detect score	0.849	<0.0001

Global health security index overall score	Joint external evaluation other score	0.815	<0.0001
Global health security index overall score	Joint external evaluation overall score	0.844	<0.0001
Global health security index overall score	Joint external evaluation prevent score	0.842	<0.0001
Global health security index overall score	Joint external evaluation respond score	0.751	<0.0001
Global health security index overall score	State fragility	-0.691	<0.0001
Global health security index overall score	Trust in government - PCA	-0.065	0.4568
Global health security index overall score	Trust in science	0.337	0.0001
Global health security index overall score	Universal health coverage	0.723	<0.0001
Global health security index overall score	Universal health coverage - CMNNs	0.654	<0.0001
Global health security index overall score	Universal health coverage - NCDs	0.703	<0.0001
Global health security index prevent score	Electoral democracy index	0.476	<0.0001
Global health security index prevent score	Electoral populism	0.158	0.0395
Global health security index prevent score	Global health security index compliance with international norms score	0.600	<0.0001
Global health security index prevent score	Global health security index detect score	0.747	<0.0001
Global health security index prevent score	Global health security index health sector score	0.847	<0.0001
Global health security index prevent score	Global health security index overall score	0.913	<0.0001
Global health security index prevent score	Global health security index respond score	0.739	<0.0001
Global health security index prevent score	Global health security index risk environment score	0.667	<0.0001
Global health security index prevent score	Government corruption - PCA	-0.609	<0.0001
Global health security index prevent score	Government effectiveness	0.700	<0.0001
Global health security index prevent score	Government health spending per capita	0.680	<0.0001
Global health security index prevent score	Health spending per capita	0.691	<0.0001
Global health security index prevent score	Healthcare Access and Quality Index	0.689	<0.0001
Global health security index prevent score	Hospital beds per capita	0.418	<0.0001
Global health security index prevent score	Income inequality	-0.438	<0.0001
Global health security index prevent score	Interpersonal trust	0.509	<0.0001
Global health security index prevent score	Joint external evaluation detect score	0.813	<0.0001
Global health security index prevent score	Joint external evaluation other score	0.775	<0.0001
Global health security index prevent score	Joint external evaluation overall score	0.818	<0.0001
Global health security index prevent score	Joint external evaluation prevent score	0.824	<0.0001

Global health security index prevent score	Joint external evaluation respond score	0.731	<0.0001
Global health security index prevent score	State fragility	-0.636	<0.0001
Global health security index prevent score	Trust in government - PCA	-0.062	0.4765
Global health security index prevent score	Trust in science	0.359	<0.0001
Global health security index prevent score	Universal health coverage	0.699	<0.0001
Global health security index prevent score	Universal health coverage - CMNNs	0.654	<0.0001
Global health security index prevent score	Universal health coverage - NCDs	0.679	<0.0001
Global health security index respond score	Electoral democracy index	0.417	<0.0001
Global health security index respond score	Electoral populism	0.136	0.0763
Global health security index respond score	Global health security index compliance with international norms score	0.579	<0.0001
Global health security index respond score	Global health security index detect score	0.676	<0.0001
Global health security index respond score	Global health security index health sector score	0.780	<0.0001
Global health security index respond score	Global health security index overall score	0.861	<0.0001
Global health security index respond score	Global health security index prevent score	0.739	<0.0001
Global health security index respond score	Global health security index risk environment score	0.543	<0.0001
Global health security index respond score	Government corruption - PCA	-0.536	<0.0001
Global health security index respond score	Government effectiveness	0.592	<0.0001
Global health security index respond score	Government health spending per capita	0.524	<0.0001
Global health security index respond score	Health spending per capita	0.570	<0.0001
Global health security index respond score	Healthcare Access and Quality Index	0.523	<0.0001
Global health security index respond score	Hospital beds per capita	0.253	0.0009
Global health security index respond score	Income inequality	-0.282	0.0005
Global health security index respond score	Interpersonal trust	0.473	<0.0001
Global health security index respond score	Joint external evaluation detect score	0.722	<0.0001
Global health security index respond score	Joint external evaluation other score	0.699	<0.0001
Global health security index respond score	Joint external evaluation overall score	0.737	<0.0001
Global health security index respond score	Joint external evaluation prevent score	0.717	<0.0001
Global health security index respond score	Joint external evaluation respond score	0.697	<0.0001
Global health security index respond score	State fragility	-0.526	<0.0001
Global health security index respond score	Trust in government - PCA	0.025	0.7721

Global health security index respond score	Trust in science	0.259	0.0024
Global health security index respond score	Universal health coverage	0.559	<0.0001
Global health security index respond score	Universal health coverage - CMNNs	0.469	<0.0001
Global health security index respond score	Universal health coverage - NCDs	0.531	<0.0001
Global health security index risk environment score	Electoral democracy index	0.635	<0.0001
Global health security index risk environment score	Electoral populism	0.092	0.2309
Global health security index risk environment score	Global health security index compliance with international norms score	0.363	<0.0001
Global health security index risk environment score	Global health security index detect score	0.499	<0.0001
Global health security index risk environment score	Global health security index health sector score	0.673	<0.0001
Global health security index risk environment score	Global health security index overall score	0.718	<0.0001
Global health security index risk environment score	Global health security index prevent score	0.667	<0.0001
Global health security index risk environment score	Global health security index respond score	0.543	<0.0001
Global health security index risk environment score	Government corruption - PCA	-0.870	<0.0001
Global health security index risk environment score	Government effectiveness	0.940	<0.0001
Global health security index risk environment score	Government health spending per capita	0.782	<0.0001
Global health security index risk environment score	Health spending per capita	0.786	<0.0001
Global health security index risk environment score	Healthcare Access and Quality Index	0.864	<0.0001
Global health security index risk environment score	Hospital beds per capita	0.542	<0.0001
Global health security index risk environment score	Income inequality	-0.449	<0.0001
Global health security index risk environment score	Interpersonal trust	0.702	<0.0001
Global health security index risk environment score	Joint external evaluation detect score	0.842	<0.0001
Global health security index risk environment score	Joint external evaluation other score	0.830	<0.0001
Global health security index risk environment score	Joint external evaluation overall score	0.851	<0.0001
Global health security index risk environment score	Joint external evaluation prevent score	0.852	<0.0001
Global health security index risk environment score	Joint external evaluation respond score	0.761	<0.0001
Global health security index risk environment score	State fragility	-0.892	<0.0001
Global health security index risk environment score	Trust in government - PCA	-0.068	0.4327
Global health security index risk environment score	Trust in science	0.430	<0.0001
Global health security index risk environment score	Universal health coverage	0.858	<0.0001
Global health security index risk environment score	Universal health coverage - CMNNs	0.852	<0.0001

Global health security index risk environment score	Universal health coverage - NCDs	0.849	<0.0001
Government corruption - PCA	Electoral democracy index	-0.721	<0.0001
Government corruption - PCA	Electoral populism	-0.015	0.8482
Government corruption - PCA	Global health security index compliance with international norms score	-0.396	<0.0001
Government corruption - PCA	Global health security index detect score	-0.471	<0.0001
Government corruption - PCA	Global health security index health sector score	-0.603	<0.0001
Government corruption - PCA	Global health security index overall score	-0.666	<0.0001
Government corruption - PCA	Global health security index prevent score	-0.609	<0.0001
Government corruption - PCA	Global health security index respond score	-0.536	<0.0001
Government corruption - PCA	Global health security index risk environment score	-0.87	<0.0001
Government corruption - PCA	Government corruption - PCA	1	<0.0001
Government corruption - PCA	Government effectiveness	-0.911	<0.0001
Government corruption - PCA	Government health spending per capita	-0.774	<0.0001
Government corruption - PCA	Health spending per capita	-0.773	<0.0001
Government corruption - PCA	Healthcare Access and Quality Index	-0.714	<0.0001
Government corruption - PCA	Hospital beds per capita	-0.464	<0.0001
Government corruption - PCA	Income inequality	0.424	<0.0001
Government corruption - PCA	Interpersonal trust	-0.727	<0.0001
Government corruption - PCA	Joint external evaluation detect score	-0.767	<0.0001
Government corruption - PCA	Joint external evaluation other score	-0.69	<0.0001
Government corruption - PCA	Joint external evaluation overall score	-0.749	<0.0001
Government corruption - PCA	Joint external evaluation prevent score	-0.755	<0.0001
Government corruption - PCA	Joint external evaluation respond score	-0.672	<0.0001
Government corruption - PCA	State fragility	0.747	<0.0001
Government corruption - PCA	Trust in government - PCA	-0.007	0.9323
Government corruption - PCA	Trust in science	-0.418	<0.0001
Government corruption - PCA	Universal health coverage	-0.757	<0.0001
Government corruption - PCA	Universal health coverage - CMNNs	-0.697	<0.0001
Government effectiveness	Electoral democracy index	0.631	<0.0001
Government effectiveness	Electoral populism	0.055	0.4657

Government effectiveness	Global health security index compliance with international norms score	0.432	<0.0001
Government effectiveness	Global health security index detect score	0.560	<0.0001
Government effectiveness	Global health security index health sector score	0.695	<0.0001
Government effectiveness	Global health security index overall score	0.758	<0.0001
Government effectiveness	Global health security index prevent score	0.700	<0.0001
Government effectiveness	Global health security index respond score	0.592	<0.0001
Government effectiveness	Global health security index risk environment score	0.940	<0.0001
Government effectiveness	Government corruption - PCA	-0.911	<0.0001
Government effectiveness	Government health spending per capita	0.784	<0.0001
Government effectiveness	Health spending per capita	0.798	<0.0001
Government effectiveness	Healthcare Access and Quality Index	0.808	<0.0001
Government effectiveness	Hospital beds per capita	0.506	<0.0001
Government effectiveness	Income inequality	-0.460	<0.0001
Government effectiveness	Interpersonal trust	0.745	<0.0001
Government effectiveness	Joint external evaluation detect score	0.858	<0.0001
Government effectiveness	Joint external evaluation other score	0.823	<0.0001
Government effectiveness	Joint external evaluation overall score	0.848	<0.0001
Government effectiveness	Joint external evaluation prevent score	0.848	<0.0001
Government effectiveness	Joint external evaluation respond score	0.750	<0.0001
Government effectiveness	State fragility	-0.825	<0.0001
Government effectiveness	Trust in government - PCA	0.057	0.5126
Government effectiveness	Trust in science	0.387	<0.0001
Government effectiveness	Universal health coverage	0.821	<0.0001
Government effectiveness	Universal health coverage - CMNNs	0.790	<0.0001
Government effectiveness	Universal health coverage - NCDs	0.794	<0.0001
Government health spending per capita	Electoral democracy index	0.566	<0.0001
Government health spending per capita	Electoral populism	0.063	0.4033
Government health spending per capita	Global health security index compliance with international norms score	0.429	<0.0001
Government health spending per capita	Global health security index detect score	0.522	<0.0001

Government health spending per capita	Global health security index health sector score	0.697	<0.0001
Government health spending per capita	Global health security index overall score	0.705	<0.0001
Government health spending per capita	Global health security index prevent score	0.680	<0.0001
Government health spending per capita	Global health security index respond score	0.524	<0.0001
Government health spending per capita	Global health security index risk environment score	0.782	<0.0001
Government health spending per capita	Government corruption - PCA	-0.774	<0.0001
Government health spending per capita	Government effectiveness	0.784	<0.0001
Government health spending per capita	Health spending per capita	0.964	<0.0001
Government health spending per capita	Healthcare Access and Quality Index	0.769	<0.0001
Government health spending per capita	Hospital beds per capita	0.486	<0.0001
Government health spending per capita	Income inequality	-0.542	<0.0001
Government health spending per capita	Interpersonal trust	0.765	<0.0001
Government health spending per capita	Joint external evaluation detect score	0.775	<0.0001
Government health spending per capita	Joint external evaluation other score	0.733	<0.0001
Government health spending per capita	Joint external evaluation overall score	0.768	<0.0001
Government health spending per capita	Joint external evaluation prevent score	0.759	<0.0001
Government health spending per capita	Joint external evaluation respond score	0.700	<0.0001
Government health spending per capita	State fragility	-0.652	<0.0001
Government health spending per capita	Trust in government - PCA	-0.028	0.7479
Government health spending per capita	Trust in science	0.564	<0.0001
Government health spending per capita	Universal health coverage	0.817	<0.0001
Government health spending per capita	Universal health coverage - CMNNs	0.686	<0.0001
Government health spending per capita	Universal health coverage - NCDs	0.777	<0.0001
Health spending per capita	Electoral democracy index	0.568	<0.0001
Health spending per capita	Electoral populism	0.083	0.2712
Health spending per capita	Global health security index compliance with international norms score	0.442	<0.0001
Health spending per capita	Global health security index detect score	0.541	<0.0001
Health spending per capita	Global health security index health sector score	0.712	<0.0001
Health spending per capita	Global health security index overall score	0.728	<0.0001
Health spending per capita	Global health security index prevent score	0.691	<0.0001

Health spending per capita	Global health security index respond score	0.570	<0.0001
Health spending per capita	Global health security index risk environment score	0.786	<0.0001
Health spending per capita	Government corruption - PCA	-0.773	<0.0001
Health spending per capita	Government effectiveness	0.798	<0.0001
Health spending per capita	Government health spending per capita	0.964	<0.0001
Health spending per capita	Healthcare Access and Quality Index	0.771	<0.0001
Health spending per capita	Hospital beds per capita	0.472	<0.0001
Health spending per capita	Income inequality	-0.515	<0.0001
Health spending per capita	Interpersonal trust	0.730	<0.0001
Health spending per capita	Joint external evaluation detect score	0.773	<0.0001
Health spending per capita	Joint external evaluation other score	0.721	<0.0001
Health spending per capita	Joint external evaluation overall score	0.759	<0.0001
Health spending per capita	Joint external evaluation prevent score	0.749	<0.0001
Health spending per capita	Joint external evaluation respond score	0.691	<0.0001
Health spending per capita	State fragility	-0.652	<0.0001
Health spending per capita	Trust in government - PCA	-0.023	0.7947
Health spending per capita	Trust in science	0.536	<0.0001
Health spending per capita	Universal health coverage	0.811	<0.0001
Health spending per capita	Universal health coverage - CMNNs	0.685	<0.0001
Health spending per capita	Universal health coverage - NCDs	0.779	<0.0001
Healthcare Access and Quality Index	Electoral democracy index	0.512	<0.0001
Healthcare Access and Quality Index	Electoral populism	0.164	0.0288
Healthcare Access and Quality Index	Global health security index compliance with international norms score	0.316	<0.0001
Healthcare Access and Quality Index	Global health security index detect score	0.510	<0.0001
Healthcare Access and Quality Index	Global health security index health sector score	0.721	<0.0001
Healthcare Access and Quality Index	Global health security index overall score	0.705	<0.0001
Healthcare Access and Quality Index	Global health security index prevent score	0.689	<0.0001
Healthcare Access and Quality Index	Global health security index respond score	0.523	<0.0001
Healthcare Access and Quality Index	Global health security index risk environment score	0.864	<0.0001
Healthcare Access and Quality Index	Government corruption - PCA	-0.714	<0.0001

Healthcare Access and Quality Index	Government effectiveness	0.808	<0.0001
Healthcare Access and Quality Index	Government health spending per capita	0.769	<0.0001
Healthcare Access and Quality Index	Health spending per capita	0.771	<0.0001
Healthcare Access and Quality Index	Hospital beds per capita	0.626	<0.0001
Healthcare Access and Quality Index	Income inequality	-0.612	<0.0001
Healthcare Access and Quality Index	Interpersonal trust	0.621	<0.0001
Healthcare Access and Quality Index	Joint external evaluation detect score	0.839	<0.0001
Healthcare Access and Quality Index	Joint external evaluation other score	0.856	<0.0001
Healthcare Access and Quality Index	Joint external evaluation overall score	0.871	<0.0001
Healthcare Access and Quality Index	Joint external evaluation prevent score	0.870	<0.0001
Healthcare Access and Quality Index	Joint external evaluation respond score	0.793	<0.0001
Healthcare Access and Quality Index	State fragility	-0.831	<0.0001
Healthcare Access and Quality Index	Trust in government - PCA	-0.193	0.0241
Healthcare Access and Quality Index	Trust in science	0.367	<0.0001
Healthcare Access and Quality Index	Universal health coverage	0.939	<0.0001
Healthcare Access and Quality Index	Universal health coverage - CMNNs	0.944	<0.0001
Healthcare Access and Quality Index	Universal health coverage - NCDs	0.987	<0.0001
Hospital beds per capita	Electoral democracy index	0.382	<0.0001
Hospital beds per capita	Electoral populism	0.155	0.0392
Hospital beds per capita	Global health security index compliance with international norms score	0.249	0.0011
Hospital beds per capita	Global health security index detect score	0.326	<0.0001
Hospital beds per capita	Global health security index health sector score	0.445	<0.0001
Hospital beds per capita	Global health security index overall score	0.431	<0.0001
Hospital beds per capita	Global health security index prevent score	0.418	<0.0001
Hospital beds per capita	Global health security index respond score	0.253	0.0009
Hospital beds per capita	Global health security index risk environment score	0.542	<0.0001
Hospital beds per capita	Government corruption - PCA	-0.464	<0.0001
Hospital beds per capita	Government effectiveness	0.506	<0.0001
Hospital beds per capita	Government health spending per capita	0.486	<0.0001
Hospital beds per capita	Health spending per capita	0.472	<0.0001

Hospital beds per capita	Healthcare Access and Quality Index	0.626	<0.0001
Hospital beds per capita	Income inequality	-0.567	<0.0001
Hospital beds per capita	Interpersonal trust	0.327	0.0042
Hospital beds per capita	Joint external evaluation detect score	0.571	<0.0001
Hospital beds per capita	Joint external evaluation other score	0.632	<0.0001
Hospital beds per capita	Joint external evaluation overall score	0.601	<0.0001
Hospital beds per capita	Joint external evaluation prevent score	0.630	<0.0001
Hospital beds per capita	Joint external evaluation respond score	0.497	<0.0001
Hospital beds per capita	State fragility	-0.568	<0.0001
Hospital beds per capita	Trust in government - PCA	-0.103	0.2306
Hospital beds per capita	Trust in science	0.087	0.3137
Hospital beds per capita	Universal health coverage	0.533	<0.0001
Hospital beds per capita	Universal health coverage - CMNNs	0.614	<0.0001
Hospital beds per capita	Universal health coverage - NCDs	0.609	<0.0001
Income inequality	Electoral democracy index	-0.342	<0.0001
Income inequality	Electoral populism	-0.066	0.4256
Income inequality	Global health security index compliance with international norms score	-0.297	0.0003
Income inequality	Global health security index detect score	-0.276	0.0007
Income inequality	Global health security index health sector score	-0.463	<0.0001
Income inequality	Global health security index overall score	-0.424	<0.0001
Income inequality	Global health security index prevent score	-0.438	<0.0001
Income inequality	Global health security index respond score	-0.282	0.0005
Income inequality	Global health security index risk environment score	-0.449	<0.0001
Income inequality	Government corruption - PCA	0.424	<0.0001
Income inequality	Government effectiveness	-0.460	<0.0001
Income inequality	Government health spending per capita	-0.542	<0.0001
Income inequality	Health spending per capita	-0.515	<0.0001
Income inequality	Healthcare Access and Quality Index	-0.612	<0.0001
Income inequality	Hospital beds per capita	-0.567	<0.0001
Income inequality	Interpersonal trust	-0.599	<0.0001

Income inequality	Joint external evaluation detect score	-0.375	0.0007
Income inequality	Joint external evaluation other score	-0.445	<0.0001
Income inequality	Joint external evaluation overall score	-0.428	0.0001
Income inequality	Joint external evaluation prevent score	-0.403	0.0002
Income inequality	Joint external evaluation respond score	-0.431	0.0001
Income inequality	State fragility	0.412	<0.0001
Income inequality	Trust in government - PCA	-0.005	0.9506
Income inequality	Trust in science	-0.304	0.0004
Income inequality	Universal health coverage	-0.539	<0.0001
Income inequality	Universal health coverage - CMNNs	-0.551	<0.0001
Income inequality	Universal health coverage - NCDs	-0.601	<0.0001
Interpersonal trust	Electoral democracy index	0.416	0.0002
Interpersonal trust	Electoral populism	-0.133	0.2536
Interpersonal trust	Global health security index compliance with international norms score	0.312	0.0073
Interpersonal trust	Global health security index detect score	0.279	0.0169
Interpersonal trust	Global health security index health sector score	0.561	<0.0001
Interpersonal trust	Global health security index overall score	0.547	<0.0001
Interpersonal trust	Global health security index prevent score	0.509	<0.0001
Interpersonal trust	Global health security index respond score	0.473	<0.0001
Interpersonal trust	Global health security index risk environment score	0.702	<0.0001
Interpersonal trust	Government corruption - PCA	-0.727	<0.0001
Interpersonal trust	Government effectiveness	0.745	<0.0001
Interpersonal trust	Government health spending per capita	0.765	<0.0001
Interpersonal trust	Health spending per capita	0.730	<0.0001
Interpersonal trust	Healthcare Access and Quality Index	0.621	<0.0001
Interpersonal trust	Hospital beds per capita	0.327	0.0042
Interpersonal trust	Income inequality	-0.599	<0.0001
Interpersonal trust	Joint external evaluation detect Score	0.732	<0.0001
Interpersonal trust	Joint external evaluation other score	0.706	<0.0001
Interpersonal trust	Joint external evaluation overall score	0.758	<0.0001

Interpersonal trust	Joint external evaluation prevent score	0.732	<0.0001
Interpersonal trust	Joint external evaluation respond score	0.703	<0.0001
Interpersonal trust	State fragility	-0.482	<0.0001
Interpersonal trust	Trust in government - PCA	0.355	0.0018
Interpersonal trust	Trust in science	0.549	<0.0001
Interpersonal trust	Universal health coverage	0.630	<0.0001
Interpersonal trust	Universal health coverage - CMNNs	0.544	<0.0001
Interpersonal trust	Universal health coverage - NCDs	0.596	<0.0001
Joint external evaluation detect Score	Electoral democracy index	0.359	0.0006
Joint external evaluation detect Score	Electoral populism	0.109	0.3121
Joint external evaluation detect Score	Global health security index compliance with international norms score	0.517	<0.0001
Joint external evaluation detect Score	Global health security index detect score	0.702	<0.0001
Joint external evaluation detect Score	Global health security index health sector score	0.796	<0.0001
Joint external evaluation detect Score	Global health security index overall score	0.849	<0.0001
Joint external evaluation detect Score	Global health security index prevent score	0.813	<0.0001
Joint external evaluation detect Score	Global health security index respond score	0.722	<0.0001
Joint external evaluation detect Score	Global health security index risk environment score	0.842	<0.0001
Joint external evaluation detect Score	Government corruption - PCA	-0.767	<0.0001
Joint external evaluation detect Score	Government effectiveness	0.858	<0.0001
Joint external evaluation detect Score	Government health spending per capita	0.775	<0.0001
Joint external evaluation detect Score	Health spending per capita	0.773	<0.0001
Joint external evaluation detect Score	Healthcare Access and Quality Index	0.839	<0.0001
Joint external evaluation detect Score	Hospital beds per capita	0.571	<0.0001
Joint external evaluation detect Score	Income inequality	-0.375	0.0007
Joint external evaluation detect Score	Interpersonal trust	0.732	<0.0001
Joint external evaluation detect Score	Joint external evaluation other score	0.873	<0.0001
Joint external evaluation detect Score	Joint external evaluation overall score	0.946	<0.0001
Joint external evaluation detect Score	Joint external evaluation prevent score	0.940	<0.0001
Joint external evaluation detect Score	Joint external evaluation respond score	0.847	<0.0001
Joint external evaluation detect Score	State fragility	-0.721	<0.0001

Joint external evaluation detect Score	Trust in government - PCA	-0.035	0.7767
Joint external evaluation detect Score	Trust in science	0.325	0.0053
Joint external evaluation detect Score	Universal health coverage	0.842	<0.0001
Joint external evaluation detect Score	Universal health coverage - CMNNs	0.806	<0.0001
Joint external evaluation detect Score	Universal health coverage - NCDs	0.831	<0.0001
Joint external evaluation other score	Electoral democracy index	0.359	0.0006
Joint external evaluation other score	Electoral populism	0.092	0.3930
Joint external evaluation other score	Global health security index compliance with international norms score	0.447	<0.0001
Joint external evaluation other score	Global health security index detect score	0.663	<0.0001
Joint external evaluation other score	Global health security index health sector score	0.796	<0.0001
Joint external evaluation other score	Global health security index overall score	0.815	<0.0001
Joint external evaluation other score	Global health security index prevent score	0.775	<0.0001
Joint external evaluation other score	Global health security index respond score	0.699	<0.0001
Joint external evaluation other score	Global health security index risk environment score	0.830	<0.0001
Joint external evaluation other score	Government corruption - PCA	-0.690	<0.0001
Joint external evaluation other score	Government effectiveness	0.823	<0.0001
Joint external evaluation other score	Government health spending per capita	0.733	<0.0001
Joint external evaluation other score	Health spending per capita	0.721	<0.0001
Joint external evaluation other score	Healthcare Access and Quality Index	0.856	<0.0001
Joint external evaluation other score	Hospital beds per capita	0.632	<0.0001
Joint external evaluation other score	Income inequality	-0.445	<0.0001
Joint external evaluation other score	Interpersonal trust	0.706	<0.0001
Joint external evaluation other score	Joint external evaluation detect score	0.873	<0.0001
Joint external evaluation other score	Joint external evaluation overall score	0.957	<0.0001
Joint external evaluation other score	Joint external evaluation prevent score	0.912	<0.0001
Joint external evaluation other score	Joint external evaluation respond score	0.913	<0.0001
Joint external evaluation other score	State fragility	-0.740	<0.0001
Joint external evaluation other score	Trust in government - PCA	-0.127	0.2937
Joint external evaluation other score	Trust in science	0.306	0.0089
Joint external evaluation other score	Universal health coverage	0.813	<0.0001

Joint external evaluation other score	Universal health coverage - CMNNs	0.807	<0.0001
Joint external evaluation other score	Universal health coverage - NCDs	0.837	<0.0001
Joint external evaluation overall score	Electoral democracy index	0.335	0.0014
Joint external evaluation overall score	Electoral populism	0.094	0.3861
Joint external evaluation overall score	Global health security index compliance with international norms score	0.486	<0.0001
Joint external evaluation overall score	Global health security index detect score	0.670	<0.0001
Joint external evaluation overall score	Global health security index health sector score	0.811	<0.0001
Joint external evaluation overall score	Global health security index overall score	0.844	<0.0001
Joint external evaluation overall score	Global health security index prevent score	0.818	<0.0001
Joint external evaluation overall score	Global health security index respond score	0.737	<0.0001
Joint external evaluation overall score	Global health security index risk environment score	0.851	<0.0001
Joint external evaluation overall score	Government corruption - PCA	-0.749	<0.0001
Joint external evaluation overall score	Government effectiveness	0.848	<0.0001
Joint external evaluation overall score	Government health spending per capita	0.768	<0.0001
Joint external evaluation overall score	Health spending per capita	0.759	<0.0001
Joint external evaluation overall score	Healthcare Access and Quality Index	0.871	<0.0001
Joint external evaluation overall score	Hospital beds per capita	0.601	<0.0001
Joint external evaluation overall score	Income inequality	-0.428	0.0001
Joint external evaluation overall score	Interpersonal trust	0.758	<0.0001
Joint external evaluation overall score	Joint external evaluation detect score	0.946	<0.0001
Joint external evaluation overall score	Joint external evaluation other score	0.957	<0.0001
Joint external evaluation overall score	Joint external evaluation prevent score	0.978	<0.0001
Joint external evaluation overall score	Joint external evaluation respond score	0.955	<0.0001
Joint external evaluation overall score	State fragility	-0.744	<0.0001
Joint external evaluation overall score	Trust in government - PCA	-0.079	0.5153
Joint external evaluation overall score	Trust in science	0.322	0.0058
Joint external evaluation overall score	Universal health coverage	0.851	<0.0001
Joint external evaluation overall score	Universal health coverage - CMNNs	0.837	<0.0001
Joint external evaluation overall score	Universal health coverage - NCDs	0.859	<0.0001
Joint external evaluation prevent score	Electoral democracy index	0.343	0.0011

Joint external evaluation prevent score	Electoral populism	0.070	0.5189
Joint external evaluation prevent score	Global health security index compliance with international norms score	0.495	<0.0001
Joint external evaluation prevent score	Global health security index detect score	0.683	<0.0001
Joint external evaluation prevent score	Global health security index health sector score	0.790	<0.0001
Joint external evaluation prevent score	Global health security index overall score	0.842	<0.0001
Joint external evaluation prevent score	Global health security index prevent score	0.824	<0.0001
Joint external evaluation prevent score	Global health security index respond score	0.717	<0.0001
Joint external evaluation prevent score	Global health security index risk environment score	0.852	<0.0001
Joint external evaluation prevent score	Government corruption - PCA	-0.755	<0.0001
Joint external evaluation prevent score	Government effectiveness	0.848	<0.0001
Joint external evaluation prevent score	Government health spending per capita	0.759	<0.0001
Joint external evaluation prevent score	Health spending per capita	0.749	<0.0001
Joint external evaluation prevent score	Healthcare Access and Quality Index	0.870	<0.0001
Joint external evaluation prevent score	Hospital beds per capita	0.630	<0.0001
Joint external evaluation prevent score	Income inequality	-0.403	0.0002
Joint external evaluation prevent score	Interpersonal trust	0.732	<0.0001
Joint external evaluation prevent score	Joint external evaluation detect score	0.940	<0.0001
Joint external evaluation prevent score	Joint external evaluation other score	0.912	<0.0001
Joint external evaluation prevent score	Joint external evaluation overall score	0.978	<0.0001
Joint external evaluation prevent score	Joint external evaluation respond score	0.887	<0.0001
Joint external evaluation prevent score	State fragility	-0.749	<0.0001
Joint external evaluation prevent score	Trust in government - PCA	-0.072	0.5553
Joint external evaluation prevent score	Trust in science	0.265	0.0242
Joint external evaluation prevent score	Universal health coverage	0.864	<0.0001
Joint external evaluation prevent score	Universal health coverage - CMNNs	0.846	<0.0001
Joint external evaluation prevent score	Universal health coverage - NCDs	0.860	<0.0001
Joint external evaluation respond score	Electoral democracy index	0.259	0.0149
Joint external evaluation respond score	Electoral populism	0.098	0.3653
Joint external evaluation respond score	Global health security index compliance with international norms score	0.416	0.0001

Joint external evaluation respond score	Global health security index detect score	0.555	<0.0001
Joint external evaluation respond score	Global health security index health sector score	0.749	<0.0001
Joint external evaluation respond score	Global health security index overall score	0.751	<0.0001
Joint external evaluation respond score	Global health security index prevent score	0.731	<0.0001
Joint external evaluation respond score	Global health security index respond score	0.697	<0.0001
Joint external evaluation respond score	Global health security index risk environment score	0.761	<0.0001
Joint external evaluation respond score	Government corruption - PCA	-0.672	<0.0001
Joint external evaluation respond score	Government effectiveness	0.750	<0.0001
Joint external evaluation respond score	Government health spending per capita	0.700	<0.0001
Joint external evaluation respond score	Health spending per capita	0.691	<0.0001
Joint external evaluation respond score	Healthcare Access and Quality Index	0.793	<0.0001
Joint external evaluation respond score	Hospital beds per capita	0.497	<0.0001
Joint external evaluation respond score	Income inequality	-0.431	0.0001
Joint external evaluation respond score	Interpersonal trust	0.703	<0.0001
Joint external evaluation respond score	Joint external evaluation detect score	0.847	<0.0001
Joint external evaluation respond score	Joint external evaluation other score	0.913	<0.0001
Joint external evaluation respond score	Joint external evaluation overall score	0.955	<0.0001
Joint external evaluation respond score	Joint external evaluation prevent score	0.887	<0.0001
Joint external evaluation respond score	State fragility	-0.664	<0.0001
Joint external evaluation respond score	Trust in government - PCA	-0.085	0.4824
Joint external evaluation respond score	Trust in science	0.369	0.0014
Joint external evaluation respond score	Universal health coverage	0.758	<0.0001
Joint external evaluation respond score	Universal health coverage - CMNNs	0.760	<0.0001
Joint external evaluation respond score	Universal health coverage - NCDs	0.781	<0.0001
State fragility	Electoral democracy index	-0.630	<0.0001
State fragility	Electoral populism	-0.116	0.1464
State fragility	Global health security index compliance with international norms score	-0.345	<0.0001
State fragility	Global health security index detect score	-0.537	<0.0001
State fragility	Global health security index health sector score	-0.653	<0.0001
State fragility	Global health security index overall score	-0.691	<0.0001

State fragility	Global health security index prevent score	-0.636	<0.0001
State fragility	Global health security index respond score	-0.526	<0.0001
State fragility	Global health security index risk environment score	-0.892	<0.0001
State fragility	Government corruption - PCA	0.747	<0.0001
State fragility	Government effectiveness	-0.825	<0.0001
State fragility	Government health spending per capita	-0.652	<0.0001
State fragility	Health spending per capita	-0.652	<0.0001
State fragility	Healthcare Access and Quality Index	-0.831	<0.0001
State fragility	Hospital beds per capita	-0.568	<0.0001
State fragility	Income inequality	0.412	<0.0001
State fragility	Interpersonal trust	-0.482	<0.0001
State fragility	Joint external evaluation detect score	-0.721	<0.0001
State fragility	Joint external evaluation other score	-0.740	<0.0001
State fragility	Joint external evaluation overall score	-0.744	<0.0001
State fragility	Joint external evaluation prevent score	-0.749	<0.0001
State fragility	Joint external evaluation respond score	-0.664	<0.0001
State fragility	Trust in government - PCA	0.228	0.0085
State fragility	Trust in science	-0.208	0.0158
State fragility	Universal health coverage	-0.785	<0.0001
State fragility	Universal health coverage - CMNNs	-0.841	<0.0001
State fragility	Universal health coverage - NCDs	-0.807	<0.0001
Trust in government - PCA	Electoral democracy index	-0.317	0.0002
Trust in government - PCA	Electoral populism	-0.082	0.3447
Trust in government - PCA	Global health security index compliance with international norms score	0.043	0.6209
Trust in government - PCA	Global health security index detect score	-0.123	0.1576
Trust in government - PCA	Global health security index health sector score	-0.086	0.3206
Trust in government - PCA	Global health security index overall score	-0.065	0.4568
Trust in government - PCA	Global health security index prevent score	-0.062	0.4765
Trust in government - PCA	Global health security index respond score	0.025	0.7721
Trust in government - PCA	Global health security index risk environment score	-0.068	0.4327

Trust in government - PCA	Government corruption - PCA	-0.007	0.9323
Trust in government - PCA	Government effectiveness	0.057	0.5126
Trust in government - PCA	Government health spending per capita	-0.028	0.7479
Trust in government - PCA	Health spending per capita	-0.023	0.7947
Trust in government - PCA	Healthcare Access and Quality Index	-0.193	0.0241
Trust in government - PCA	Hospital beds per capita	-0.103	0.2306
Trust in government - PCA	Income inequality	-0.005	0.9506
Trust in government - PCA	Interpersonal trust	0.355	0.0018
Trust in government - PCA	Joint external evaluation detect score	-0.035	0.7767
Trust in government - PCA	Joint external evaluation other score	-0.127	0.2937
Trust in government - PCA	Joint external evaluation overall score	-0.079	0.5153
Trust in government - PCA	Joint external evaluation prevent score	-0.072	0.5553
Trust in government - PCA	Joint external evaluation respond score	-0.085	0.4824
Trust in government - PCA	State fragility	0.228	0.0085
Trust in government - PCA	Trust in government - PCA	1	
Trust in government - PCA	Trust in science	0.205	0.0205
Trust in government - PCA	Universal health coverage	-0.168	0.0500
Trust in government - PCA	Universal health coverage - CMNNs	-0.193	0.0242
Trust in science	Electoral democracy index	0.273	0.0013
Trust in science	Electoral populism	-0.026	0.7610
Trust in science	Global health security index compliance with international norms score	0.245	0.0041
Trust in science	Global health security index detect score	0.157	0.0697
Trust in science	Global health security index health sector score	0.343	<0.0001
Trust in science	Global health security index overall score	0.337	0.0001
Trust in science	Global health security index prevent score	0.359	<0.0001
Trust in science	Global health security index respond score	0.259	0.0024
Trust in science	Global health security index risk environment score	0.430	<0.0001
Trust in science	Government corruption - PCA	-0.418	<0.0001
Trust in science	Government effectiveness	0.387	<0.0001
Trust in science	Government health spending per capita	0.564	<0.0001

Trust in science	Health spending per capita	0.536	<0.0001
Trust in science	Healthcare Access and Quality Index	0.367	<0.0001
Trust in science	Hospital beds per capita	0.087	0.3137
Trust in science	Income inequality	-0.304	0.0004
Trust in science	Interpersonal trust	0.549	<0.0001
Trust in science	Joint external evaluation detect score	0.325	0.0053
Trust in science	Joint external evaluation other score	0.306	0.0089
Trust in science	Joint external evaluation overall score	0.322	0.0058
Trust in science	Joint external evaluation prevent score	0.265	0.0242
Trust in science	Joint external evaluation respond score	0.369	0.0014
Trust in science	State fragility	0.205	0.0205
Trust in science	Trust in government - PCA	0.208	0.0147
Trust in science	Universal health coverage	0.392	<0.0001
Trust in science	Universal health coverage - CMNNs	0.294	0.0005
Trust in science	Universal health coverage - NCDs	0.350	<0.0001
Universal health coverage	Electoral democracy index	0.544	<0.0001
Universal health coverage	Electoral populism	0.114	0.1320
Universal health coverage	Global health security index compliance with international norms score	0.342	<0.0001
Universal health coverage	Global health security index detect score	0.526	<0.0001
Universal health coverage	Global health security index health sector score	0.731	<0.0001
Universal health coverage	Global health security index overall score	0.723	<0.0001
Universal health coverage	Global health security index prevent score	0.699	<0.0001
Universal health coverage	Global health security index respond score	0.559	<0.0001
Universal health coverage	Global health security index risk environment score	0.858	<0.0001
Universal health coverage	Government corruption - PCA	-0.757	<0.0001
Universal health coverage	Government effectiveness	0.821	<0.0001
Universal health coverage	Government health spending per capita	0.817	<0.0001
Universal health coverage	Health spending per capita	0.811	<0.0001
Universal health coverage	Healthcare Access and Quality Index	0.939	<0.0001
Universal health coverage	Hospital beds per capita	0.533	<0.0001

Universal health coverage	Income inequality	-0.539	<0.0001
Universal health coverage	Interpersonal trust	0.630	<0.0001
Universal health coverage	Joint external evaluation detect score	0.842	<0.0001
Universal health coverage	Joint external evaluation other score	0.813	<0.0001
Universal health coverage	Joint external evaluation overall score	0.851	<0.0001
Universal health coverage	Joint external evaluation prevent score	0.864	<0.0001
Universal health coverage	Joint external evaluation respond score	0.758	<0.0001
Universal health coverage	State fragility	-0.785	<0.0001
Universal health coverage	Trust in government - PCA	-0.168	0.0500
Universal health coverage	Trust in science	0.392	<0.0001
Universal health coverage	Universal health coverage - CMNNs	0.909	<0.0001
Universal health coverage	Universal health coverage - NCDs	0.958	<0.0001
Universal health coverage - CMNNs	Electoral democracy index	0.466	<0.0001
Universal health coverage - CMNNs	Electoral populism	0.181	0.0157
Universal health coverage - CMNNs	Global health security index compliance with international norms score	0.272	0.0003
Universal health coverage - CMNNs	Global health security index detect score	0.460	<0.0001
Universal health coverage - CMNNs	Global health security index health sector score	0.668	<0.0001
Universal health coverage - CMNNs	Global health security index overall score	0.654	<0.0001
Universal health coverage - CMNNs	Global health security index prevent score	0.654	<0.0001
Universal health coverage - CMNNs	Global health security index respond score	0.469	<0.0001
Universal health coverage - CMNNs	Global health security index risk environment score	0.852	<0.0001
Universal health coverage - CMNNs	Government corruption - PCA	-0.697	<0.0001
Universal health coverage - CMNNs	Government effectiveness	0.790	<0.0001
Universal health coverage - CMNNs	Government health spending per capita	0.686	<0.0001
Universal health coverage - CMNNs	Health spending per capita	0.685	<0.0001
Universal health coverage - CMNNs	Healthcare Access and Quality Index	0.944	<0.0001
Universal health coverage - CMNNs	Hospital beds per capita	0.614	<0.0001
Universal health coverage - CMNNs	Income inequality	-0.551	<0.0001
Universal health coverage - CMNNs	Interpersonal trust	0.544	<0.0001
Universal health coverage - CMNNs	Joint external evaluation detect score	0.806	<0.0001

Universal health coverage - CMNNs	Joint external evaluation other score	0.807	<0.0001
Universal health coverage - CMNNs	Joint external evaluation overall score	0.837	<0.0001
Universal health coverage - CMNNs	Joint external evaluation prevent score	0.846	<0.0001
Universal health coverage - CMNNs	Joint external evaluation respond score	0.760	<0.0001
Universal health coverage - CMNNs	State fragility	-0.841	<0.0001
Universal health coverage - CMNNs	Trust in government - PCA	-0.193	0.0242
Universal health coverage - CMNNs	Trust in science	0.294	0.0005
Universal health coverage - CMNNs	Universal health coverage	0.909	<0.0001
Universal health coverage - CMNNs	Universal health coverage - NCDs	0.923	<0.0001
Universal health coverage - NCDs	Electoral democracy index	0.516	<0.0001
Universal health coverage - NCDs	Electoral populism	0.147	0.0506
Universal health coverage - NCDs	Global health security index compliance with international norms score	0.319	<0.0001
Universal health coverage - NCDs	Global health security index detect score	0.510	<0.0001
Universal health coverage - NCDs	Global health security index health sector score	0.722	<0.0001
Universal health coverage - NCDs	Global health security index overall score	0.703	<0.0001
Universal health coverage - NCDs	Global health security index prevent score	0.679	<0.0001
Universal health coverage - NCDs	Global health security index respond score	0.531	<0.0001
Universal health coverage - NCDs	Global health security index risk environment score	0.849	<0.0001
Universal health coverage - NCDs	Government corruption - PCA	-0.707	<0.0001
Universal health coverage - NCDs	Government effectiveness	0.794	<0.0001
Universal health coverage - NCDs	Government health spending per capita	0.777	<0.0001
Universal health coverage - NCDs	Health spending per capita	0.779	<0.0001
Universal health coverage - NCDs	Healthcare Access and Quality Index	0.987	<0.0001
Universal health coverage - NCDs	Hospital beds per capita	0.609	<0.0001
Universal health coverage - NCDs	Income inequality	-0.601	<0.0001
Universal health coverage - NCDs	Interpersonal trust	0.596	<0.0001
Universal health coverage - NCDs	Joint external evaluation detect score	0.831	<0.0001
Universal health coverage - NCDs	Joint external evaluation other score	0.837	<0.0001
Universal health coverage - NCDs	Joint external evaluation overall score	0.859	<0.0001
Universal health coverage - NCDs	Joint external evaluation prevent score	0.860	<0.0001

Universal health coverage - NCDs	Joint external evaluation respond score	0.781	<0.0001
Universal health coverage - NCDs	State fragility	-0.807	<0.0001
Universal health coverage - NCDs	Trust in government - PCA	-0.219	0.0105
Universal health coverage - NCDs	Trust in science	0.350	<0.0001
Universal health coverage - NCDs	Universal health coverage	0.958	<0.0001
Universal health coverage - NCDs	Universal health coverage - CMNNs	0.923	<0.0001

139
140
141
142
143
144

2.6 Results of stage 1 and stage 2 regressions

2.6.1 Results of stage 1 multivariate regressions, January 1, 2020 – September 30, 2021

Covariates	Beta estimate (uncertainty interval)	
	Cumulative infections per capita	IFR
GDP per capita	-0.17 (-0.28 - -0.05)	-0.17 (-0.28 - -0.05)
% of population living above 1000 people/km ²	0.05 (-0.10 – 0.19)	-0.03 (-0.16-0.06)
Average number of beta-coronavirus host bat species	0.08 (-0.04 – 0.23)	0.07 (-0.01-0.18)
% of population living below 100 m	-0.15 (-0.25 - -0.06)	-
BMI	-	1.74 (0.65-3.2)
Smoking prevalence	-	0.01 (-0.16-0.19)
PM _{2.5} air pollution concentration (mg/m ³)	-	-0.03 (-0.16-0.06)
COPD prevalence	-	0.04 (-0.16-0.27)
Cancer prevalence	-	-0.16 (-0.4-0.01)

145
146

147
148

2.6.2 Results of stage 2 bivariate regressions, January 1, 2020 – September 30, 2021

Covariates	Beta estimate (uncertainty interval)	
	Cumulative infections per capita	IFR
Hospital beds per capita	-0.07 (-0.21 - 0.06)	-0.03 (-0.11 - 0.04)
Government health spending per capita	-0.17 (-0.34 - 0)	-0.01 (-0.10 - 0.08)
Healthcare Access and Quality Index	-0.09 (-0.28 - 0.05)	-0.04 (-0.11 - 0.05)
Health spending per capita	-0.16 (-0.32 - -0.02)	-0.02 (-0.09 - 0.08)
Universal health coverage - CMNNs	-0.03 (-0.16 - 0.13)	0.00 (-0.07 - 0.09)
Electoral populism	0.12 (0.02 - 0.22)	-0.03 (-0.12 - 0.05)
Global health security index overall score	-0.10 (-0.26 - 0.07)	-0.03 (-0.10 - 0.04)
Global health security index prevent score	-0.08 (-0.24 - 0.04)	0.01 (-0.08 - 0.12)
Global health security index detect score	-0.03 (-0.17 - 0.12)	-0.02 (-0.11 - 0.07)
Global health security index respond score	-0.12 (-0.28 - 0.03)	-0.03 (-0.13 - 0.08)
Global health security index health sector score	-0.11 (-0.27 - 0.07)	0.00 (-0.11 - 0.11)
Global health security index compliance with international norms score	-0.08 (-0.2 - 0.08)	-0.02 (-0.12 - 0.05)
Global health security index risk environment score	-0.06 (-0.22 - 0.08)	-0.02 (-0.12 - 0.04)
Income inequality	0.17 (0.00 - 0.31)	0.01 (-0.09 - 0.09)
Government effectiveness	-0.16 (-0.34 - -0.01)	-0.02 (-0.12 - 0.06)
Government corruption - PCA	0.14 (0.05 - 0.27)	0.08 (0.02 - 0.19)
Trust in government - PCA	-0.25 (-0.36 - -0.11)	-0.03 (-0.12 - 0.06)
Interpersonal trust	-0.67 (-0.94 - -0.42)	0.01 (-0.03 - 0.07)
Joint external evaluation overall score	-0.15 (-0.35 - 0.07)	-0.02 (-0.17 - 0.08)
Joint external evaluation prevent score	-0.16 (-0.35 - 0.08)	0.00 (-0.07 - 0.06)
Joint external evaluation detect Score	-0.14 (-0.33 - 0.14)	-0.03 (-0.09 - 0.04)
Joint external evaluation respond score	-0.14 (-0.35 - 0.06)	-0.06 (-0.19 - 0.07)
Joint external evaluation other score	-0.08 (-0.28 - 0.11)	-0.05 (-0.19 - 0.07)
Universal health coverage - NCDs	-0.08 (-0.24 - 0.05)	-0.01 (-0.15 - 0.09)
State fragility	-0.01 (-0.15 - 0.14)	-0.01 (-0.13 - 0.12)
Trust in science	-0.11 (-0.27 - 0.05)	-0.02 (-0.12 - 0.09)
Universal health coverage	-0.14 (-0.29 - 0.07)	0.01 (-0.12 - 0.18)
Electoral democracy index	-0.08 (-0.25 - 0.07)	0.02 (-0.07 - 0.11)

149
150

2.6.3 Results of stage 1 multivariate regressions, January 1, 2020 – October 15, 2020

Covariates	Beta estimate (uncertainty interval)	
	Cumulative infections per capita	IFR
GDP per capita	-0.21 (-0.39 - -0.09)	-0.19 (-0.31 - 0.01)
% of population living above 1000 people/km ²	0.10 (-0.13 – 0.35)	-0.04 (-0.17 - 0.08)
Average number of beta-coronavirus host bat species	0.01 (-0.19 – 0.22)	0.04 (-0.09 - 0.14)
% of population living below 100 m	-0.24 (-0.37 - -0.09)	-
BMI	-	3.36 (1.72 - 4.88)
Smoking prevalence	-	-0.38 (-0.64 - -0.11)
PM _{2.5} air pollution concentration (mg/m ³)	-	-0.20 (-0.39 - 0.03)
COPD prevalence	-	0.51 (0.19 - 0.78)
Cancer prevalence	-	-0.13 (-0.42 - 0.1)

151
152

153
154

2.6.4 Results of stage 2 bivariate regressions, January 1, 2020 – October 15, 2020

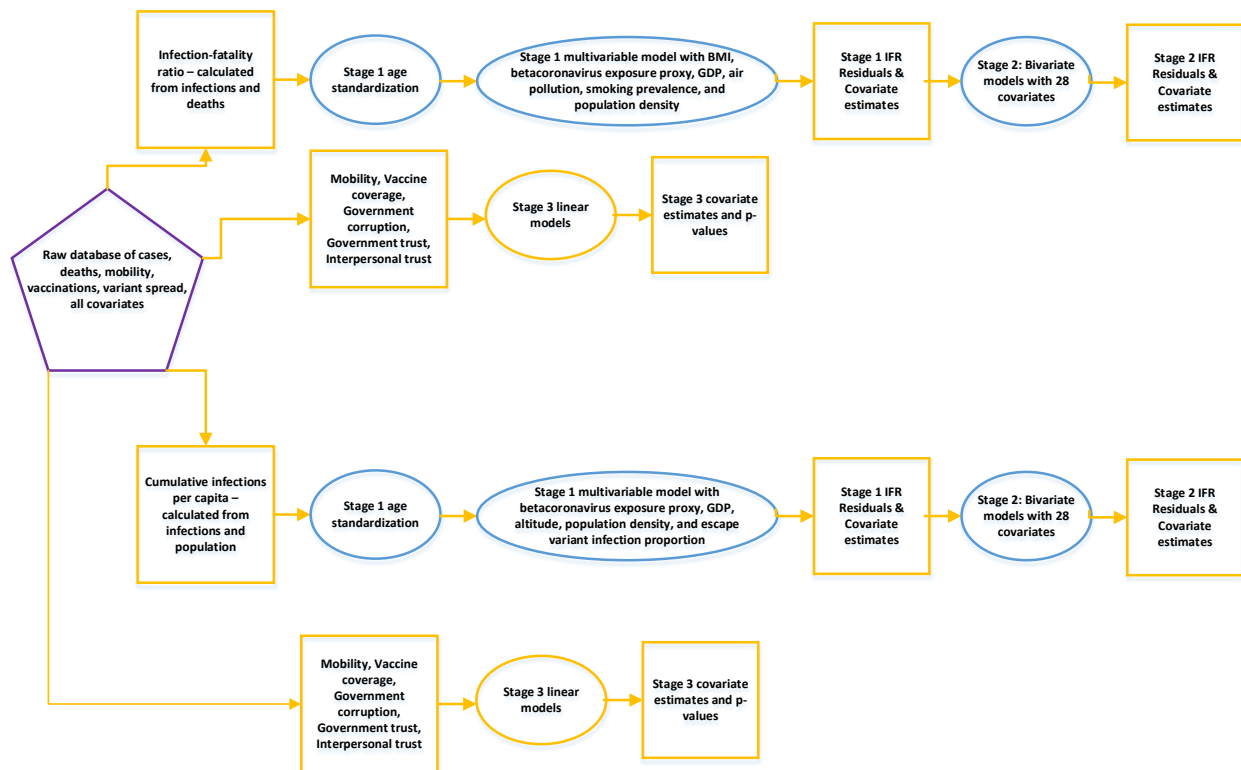
Covariates	Beta estimate (uncertainty interval)	
	Cumulative infections per capita	IFR
Hospital beds per capita	-0.21 (-0.41 - 0.02)	-0.03 (-0.11 - 0.04)
Government health spending per capita	-0.05 (-0.28 - 0.17)	-0.01 (-0.1 - 0.08)
Healthcare Access and Quality Index	-0.07 (-0.31 - 0.19)	-0.04 (-0.11 - 0.05)
Health spending per capita	-0.09 (-0.36 - 0.14)	-0.02 (-0.09 - 0.08)
Universal health coverage - CMNNs	-0.12 (-0.38 - 0.13)	0.00 (-0.07 - 0.09)
Electoral populism	0.15 (-0.09 - 0.37)	-0.03 (-0.12 - 0.05)
Global health security index overall score	-0.06 (-0.34 - 0.18)	-0.03 (-0.10 - 0.04)
Global health security index prevent score	-0.07 (-0.30 - 0.18)	0.01 (-0.08 - 0.12)
Global health security index detect score	-0.04 (-0.33 - 0.20)	-0.02 (-0.11 - 0.07)
Global health security index respond score	-0.01 (-0.28 - 0.27)	-0.03 (-0.13 - 0.08)
Global health security index health sector score	-0.04 (-0.25 - 0.22)	0.00 (-0.11 - 0.11)
Global health security index compliance with international norms score	-0.10 (-0.32 - 0.12)	-0.02 (-0.12 - 0.05)
Global health security index risk environment score	-0.20 (-0.44 - 0.04)	-0.02 (-0.12 - 0.04)
Income inequality	0.19 (-0.05 - 0.40)	0.01 (-0.09 - 0.09)
Government effectiveness	-0.24 (-0.55 - -0.05)	-0.02 (-0.12 - 0.06)
Government corruption - PCA	0.24 (0.07 - 0.43)	0.08 (0.02 - 0.19)
Trust in government - PCA	-0.31 (-0.51 - -0.13)	-0.03 (-0.12 - 0.06)
Interpersonal trust	-0.62 (-0.97 - -0.26)	0.01 (-0.03 - 0.07)
Joint external evaluation overall score	-0.17 (-0.42 - 0.19)	-0.02 (-0.17 - 0.08)
Joint external evaluation prevent score	-0.13 (-0.52 - 0.27)	0.00 (-0.07 - 0.06)
Joint external evaluation detect Score	-0.13 (-0.46 - 0.28)	-0.03 (-0.09 - 0.04)
Joint external evaluation respond score	-0.23 (-0.58 - 0.1)	-0.06 (-0.19 - 0.07)
Joint external evaluation other score	0.06 (-0.29 - 0.34)	-0.05 (-0.19 - 0.07)
Universal health coverage - NCDs	-0.04 (-0.30 - 0.16)	-0.01 (-0.15 - 0.09)
State fragility	0.19 (-0.02 - 0.47)	-0.01 (-0.13 - 0.12)
Trust in science	0.16 (-0.08 - 0.43)	-0.02 (-0.12 - 0.09)
Universal health coverage	-0.10 (-0.41 - 0.13)	0.01 (-0.12 - 0.18)
Electoral democracy index	-0.11 (-0.36 - 0.11)	0.02 (-0.07 - 0.11)

155

156 Section 3: Additional methods

157 For our final analysis, we included all variables that we had access to, there was previous
158 literature connecting, and there was theoretical perspective on how they could be included. In
159 general, we opted for an inclusive modelling strategy and included rather than excluded
160 variables in this exploratory analysis. A diagram of our analytic pathway follows.

162 Figure 3.1.1: Modelling pathway for Stages 1-3 for IFR and infections



165
166

167 3.2 Proxy for previous exposure to beta coronaviruses

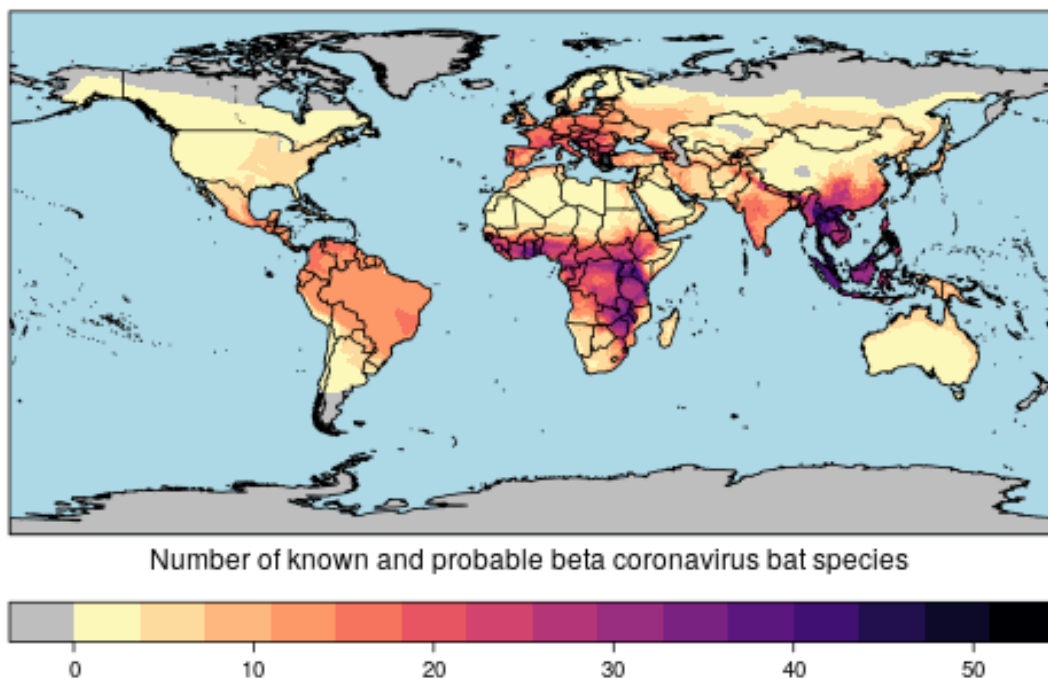
168

169 Literature suggests that possible previous exposure to SARS, MERS, or other beta
170 coronaviruses may provide cross-immunity to SARS-CoV2.²³⁻²⁵ In order to capture
171 previous exposure to other beta coronaviruses, we obtained a list of possible bat hosts
172 of beta coronaviruses produced by authors at the Verena Consortium.¹⁸ These authors
173 used an ensemble model of seven other statistical models (network- and trait-based
174 models) to predict possible bat beta coronavirus hosts in addition to known bat hosts.
175 This list of 300+ species was then compared against known species ranges, determined
176 by experts, using the IUCN Red List of Threatened Species.²¹ Of the 448 known and
177 probable species extracted from the publication by Becker et al,²² 441 were able to be

178 retrieved from the IUCN red list, allowing for possible changes in species naming
179 convention.

180
181 Following the extraction of a geographical range for each species, each range was
182 converted to a 1-km by 1-km raster in R using the raster package. Ranges were then
183 layered one on top of the other, interpolated to a 5-km by 5-km grid cell range for
184 processing times using the average of all cells in that grid. All ranges were then summed
185 together to get the estimated number of bat species per grid cell, as seen in Figure 1
186 below.

187
188 Figure 3.2.1: Number of known and probable beta coronavirus bat species per
189 grid cell



190
191 The number of species per grid cell were then averaged over the first and second
192 administrative region in agreement with our COVID-19 units of analysis. Number of bat
193 species per location ranged from 0 to 42, with a median exposure of 11.5 (IQR: 4.2–
194 16.6).
195

196 197 3.3 PCA analysis for trust in government and corruption

198 We used principal component analysis (PCA) to create summary metrics that combine
199 information about trust in government and/or corruption. The input variables were
200 governmental corruption, bureaucracy corruption, trust in government (WVS), and trust
201 in government (Gallup). The first summary metric combined the two trust covariates,
202 and the second combined the two corruption covariates. Using centered and scaled
203 versions of the covariates, the summary metrics consist of the first principal component
204 from each PCA analysis. The first component (of four) explained 92.6% of the variation

205 for the trust variable and 94.4% of the corruption variable. PCA requires that all
206 variables have complete data, but some of the variables had missing data. We used the
207 imputePCA function from the missMDA R package to impute missing values, but only
208 used observations that had at least one of the two original observations. The package
209 implements the iterative PCA method described in Josse and Husson (2010).²⁶ To
210 propagate uncertainty from the imputation process, we created 100 datasets with
211 random realisations of the imputation.

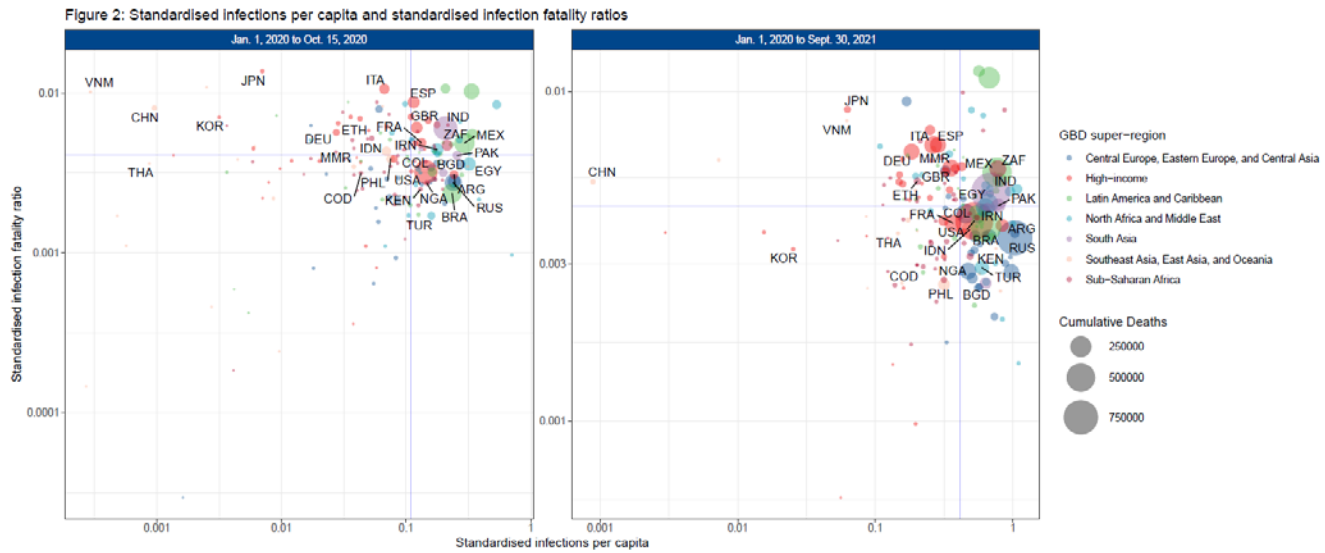
212

213

214

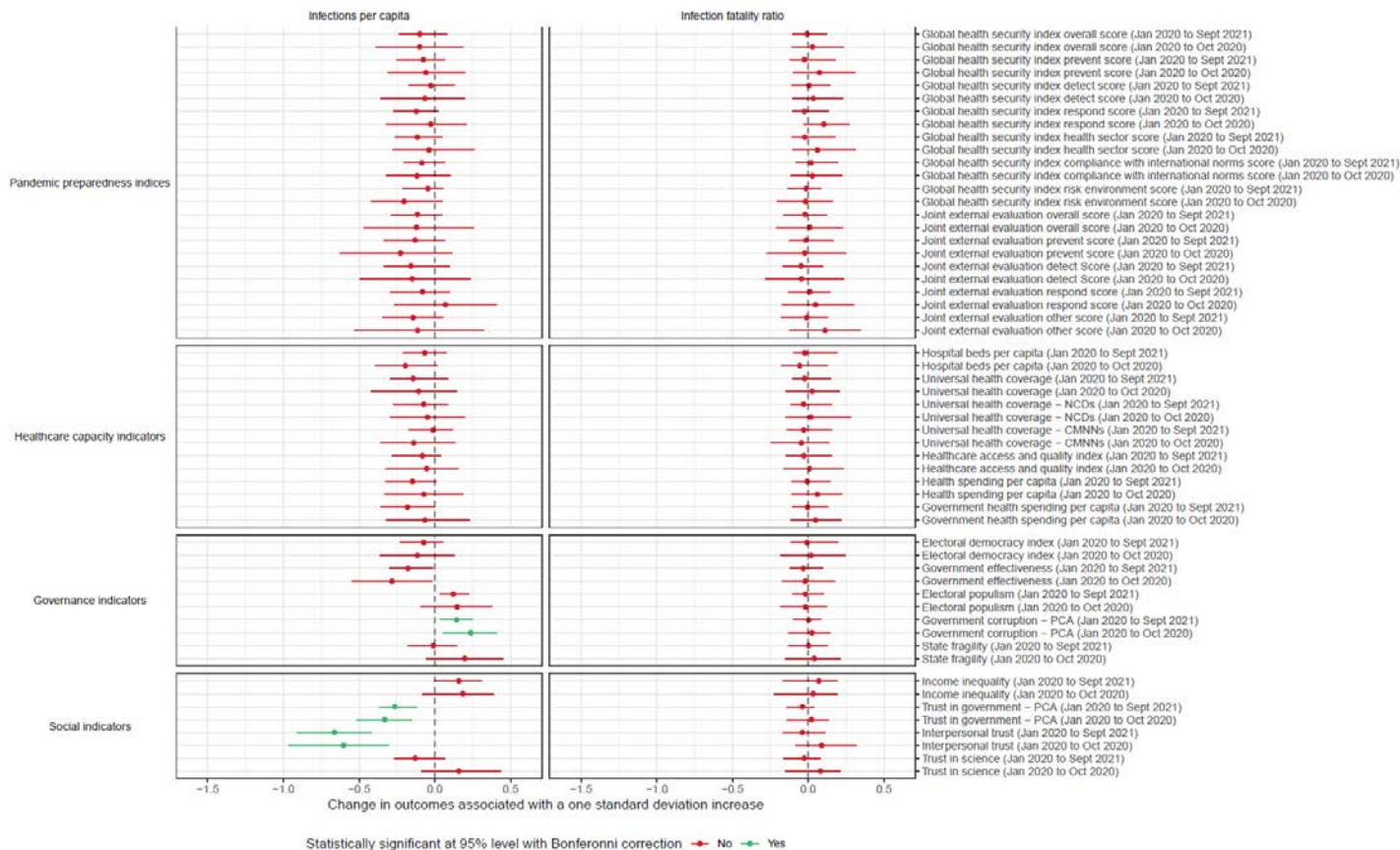
215 Section 4: Sensitivity analyses

216 4.1 Using a correction of 1% of median for log transformations



217
218 Figure 4.1.1: Infections vs. IFR

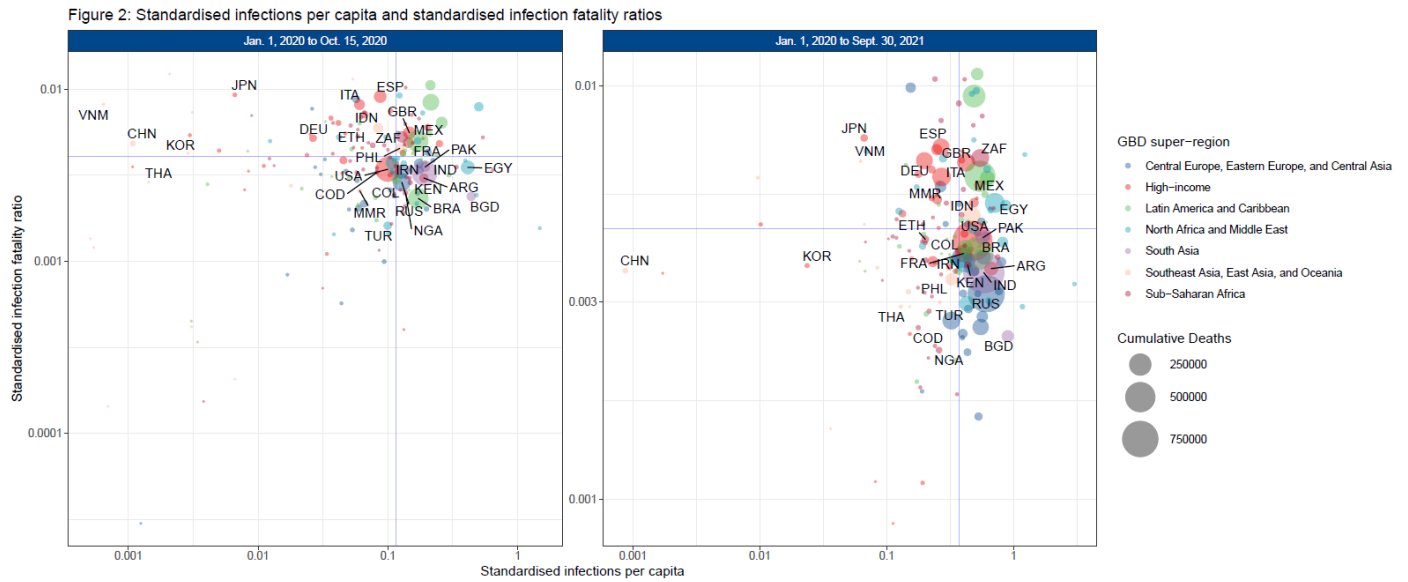
219
220 Figure 4.1.2: Bivariate results



222
223

4.2 Using centred and scaled variables

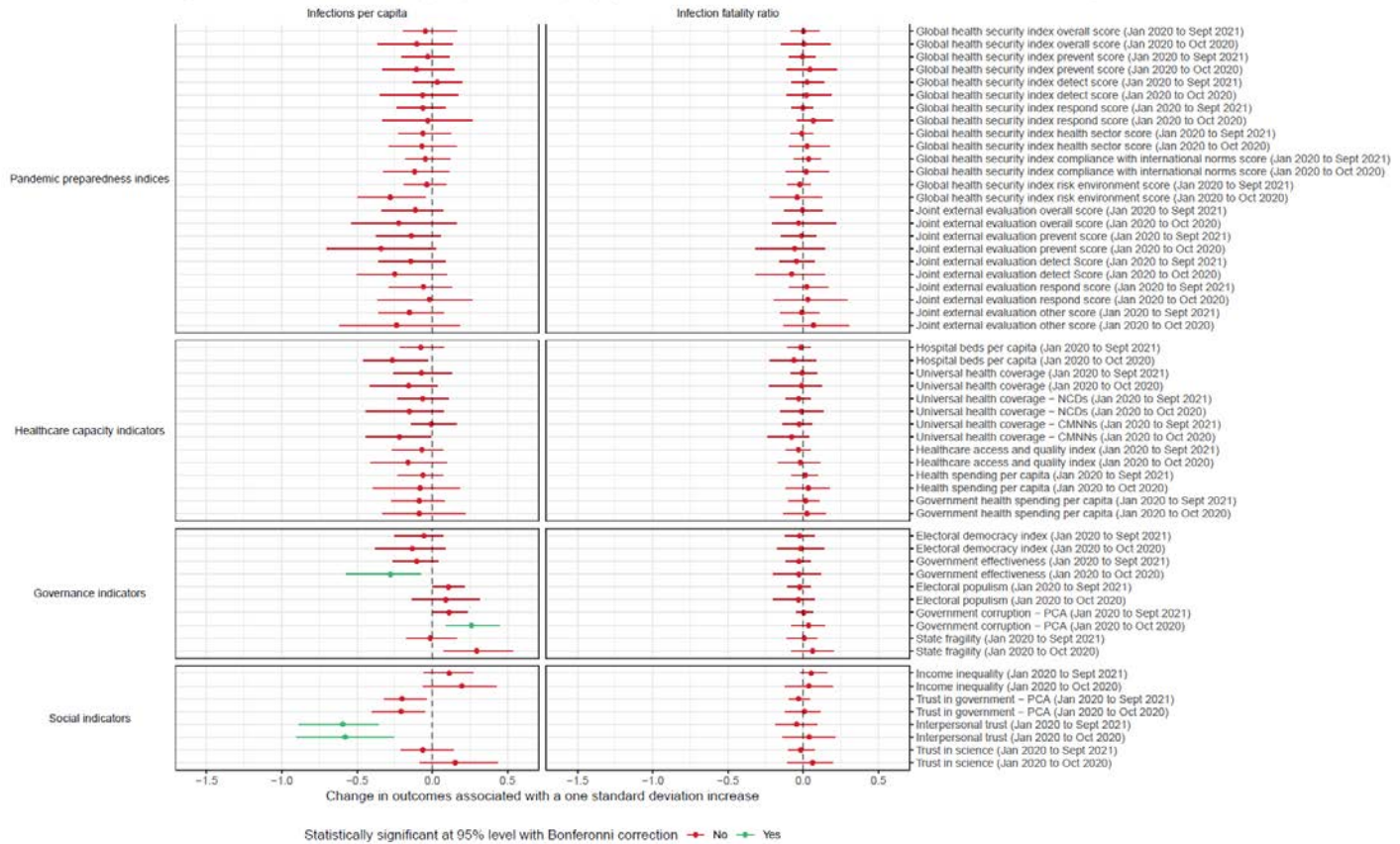
Figure 4.2.1: Infections vs. IFR



224
225
226

Figure 4.2.2 Bivariate results

Figure 3: Associations between key preparedness, capacity, governance, and social indicators and infections and infection fatality ratio



227

228
229

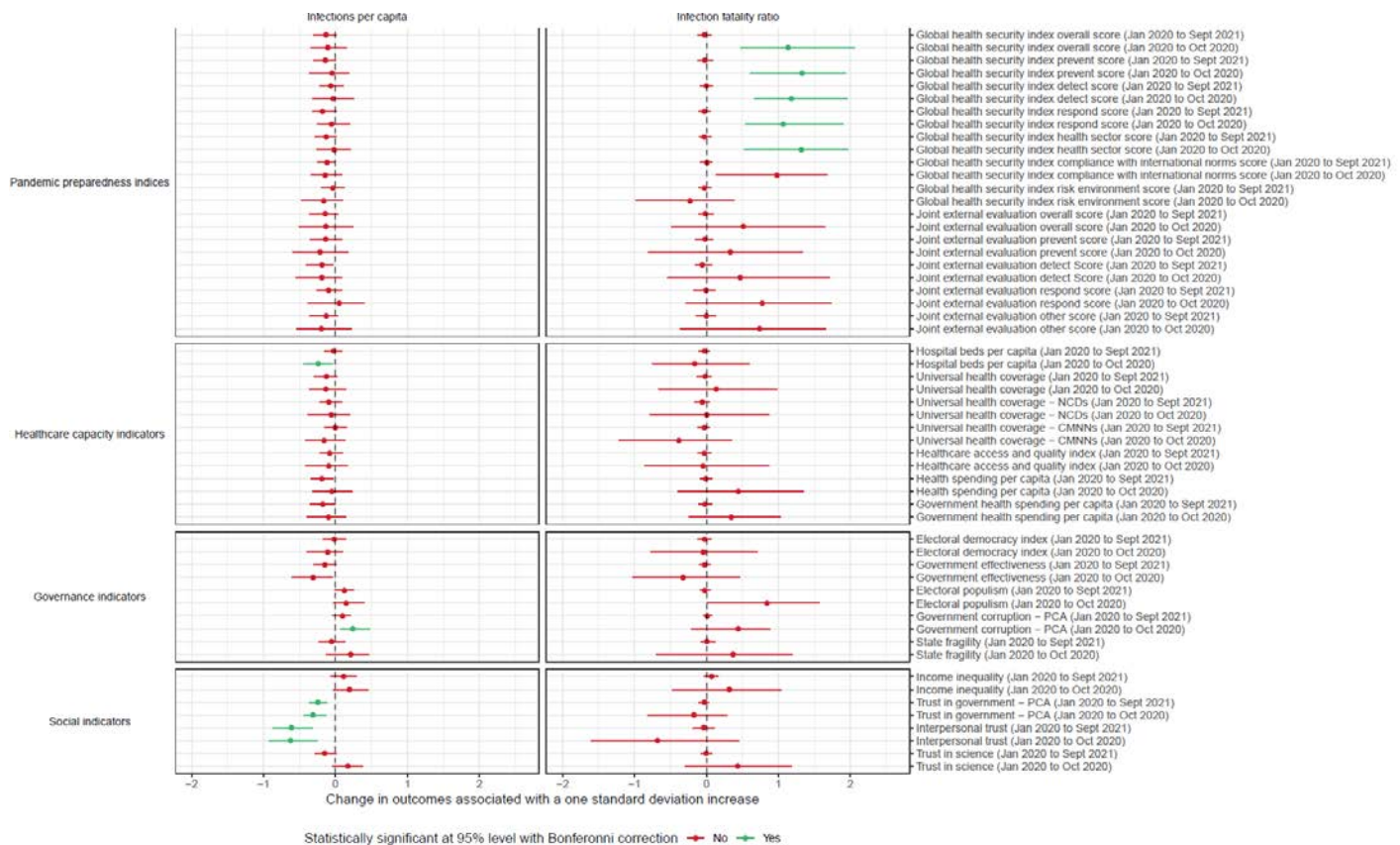
4.3 Including variant spread in stage 1

Figure 4.3.1: Infections vs. IFR



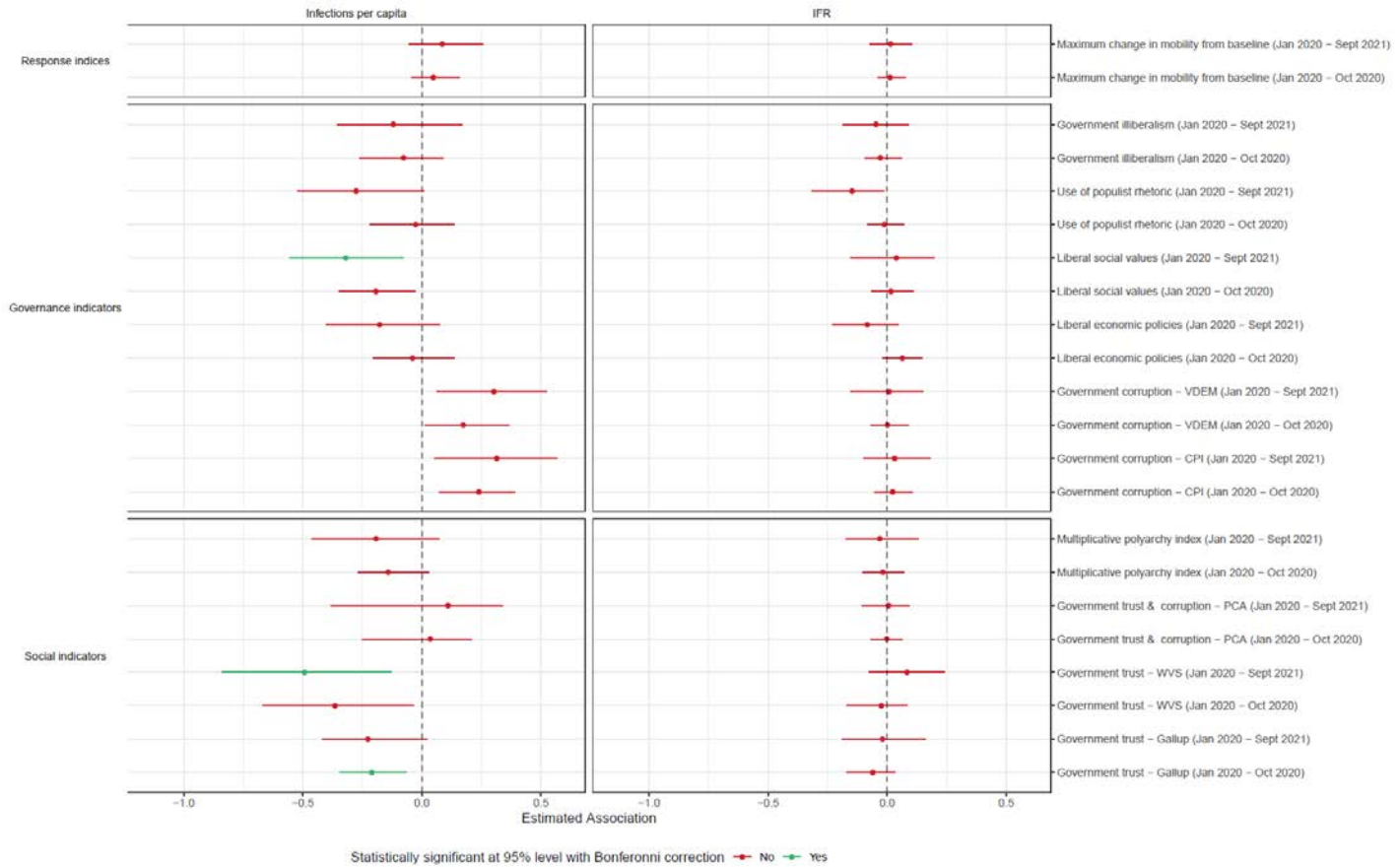
230
231
232

Figure 4.3.2: Bivariate results



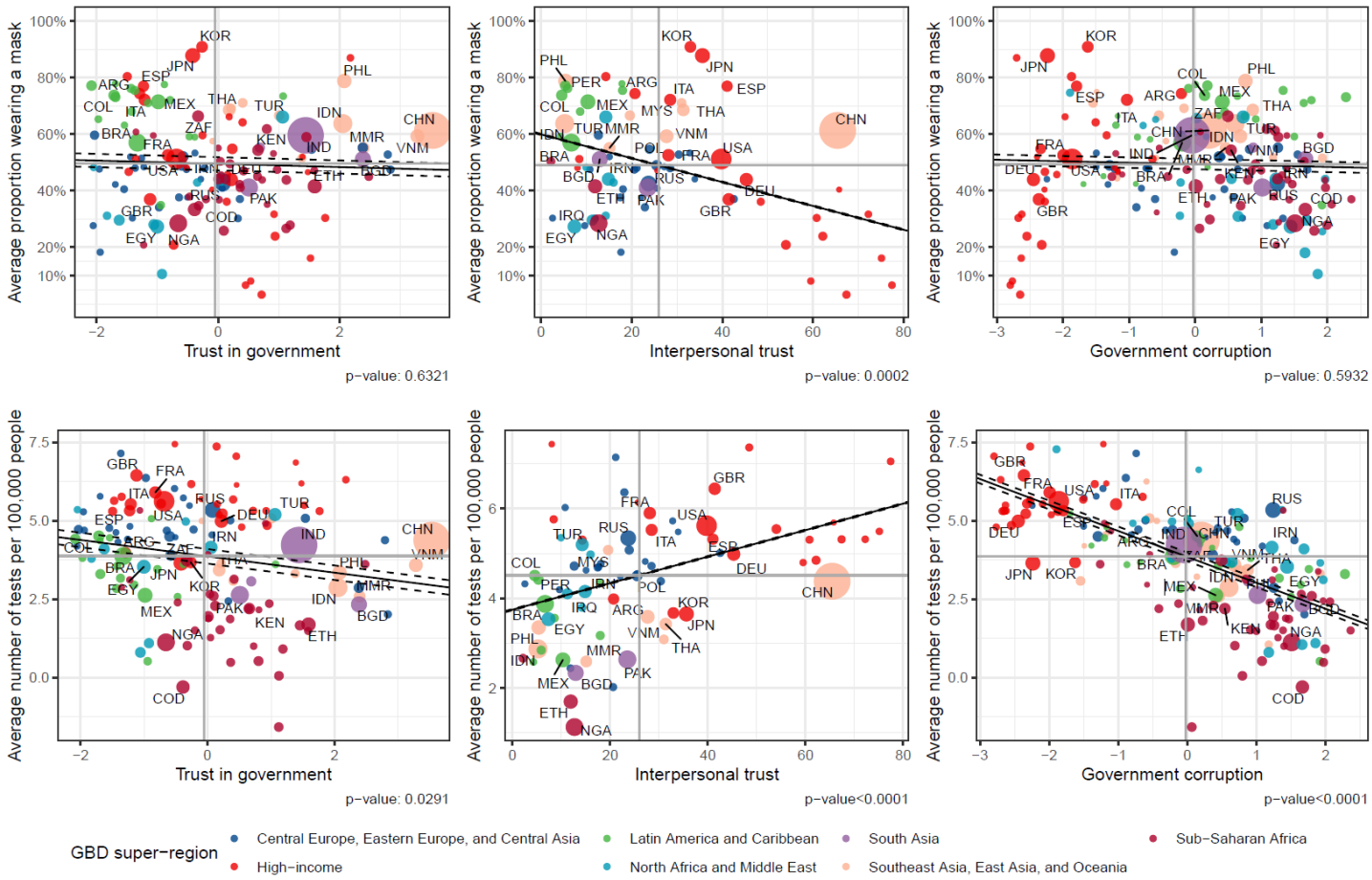
233

234 Section 5: Supplemental results
 235 5.1 Additional bivariate analyses



236
 237
 238

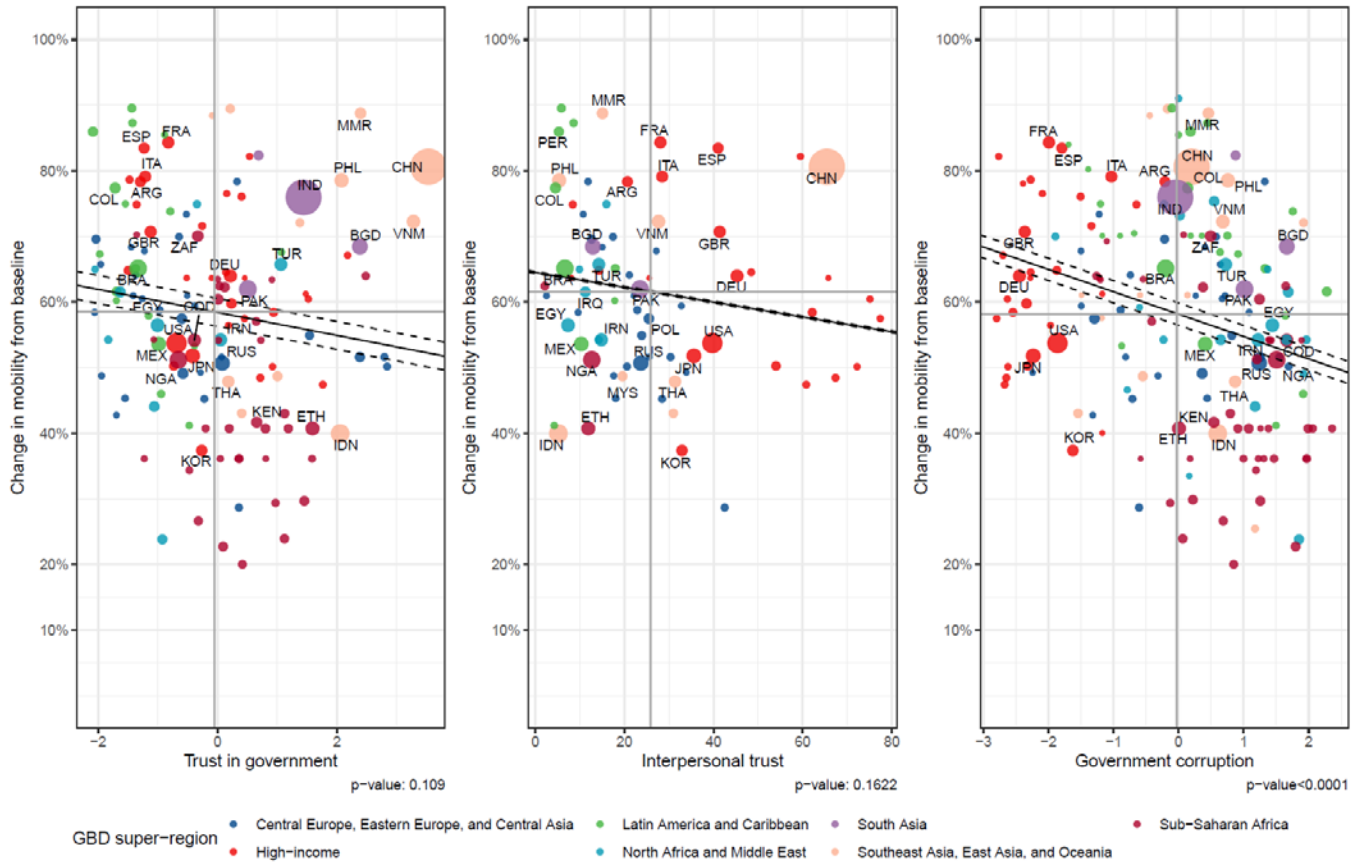
5.2 Additional intermediate pathway analyses looking at testing and mask use



241
 242
 243
 244

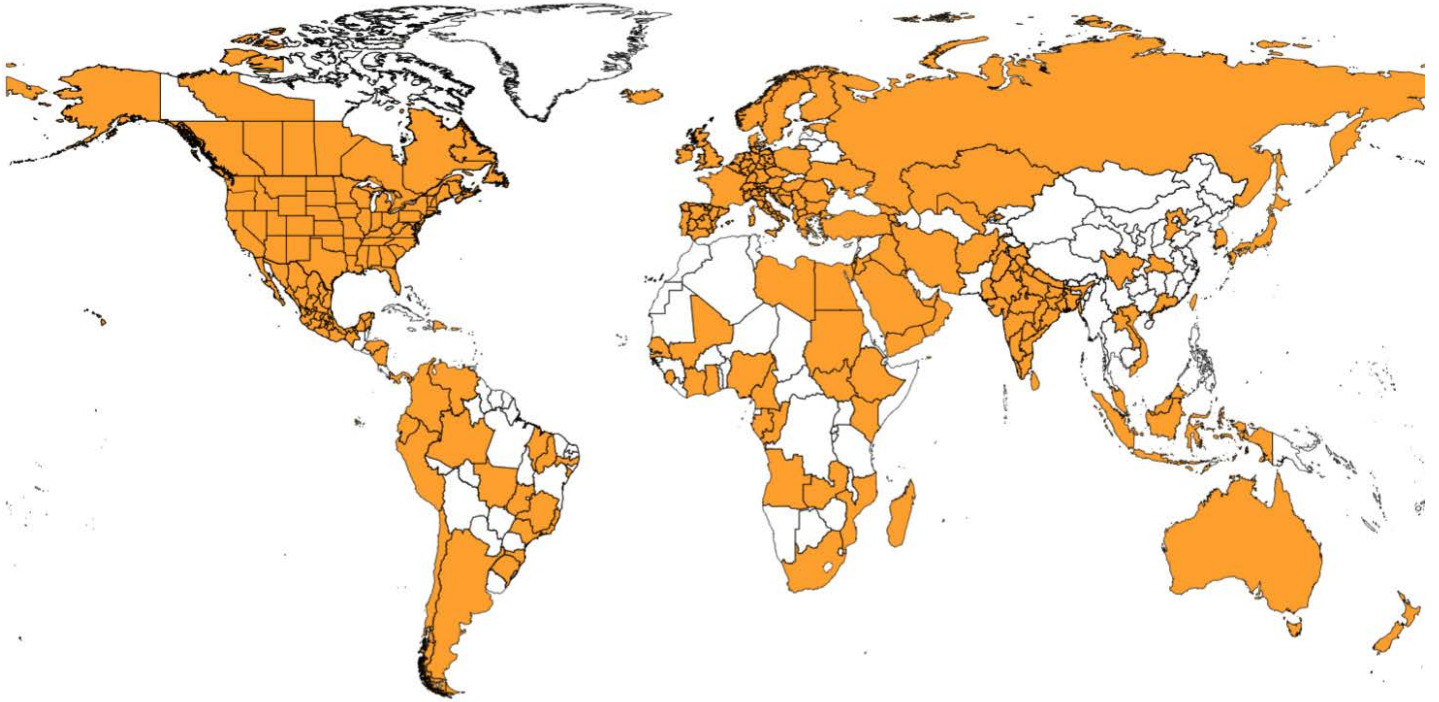
5.3 Additional analyses for the first phase of the pandemic (pre-variants and vaccines, January 1, 2020 – October 15, 2020)

Figure 5.3.1: Intermediate mobility pathways



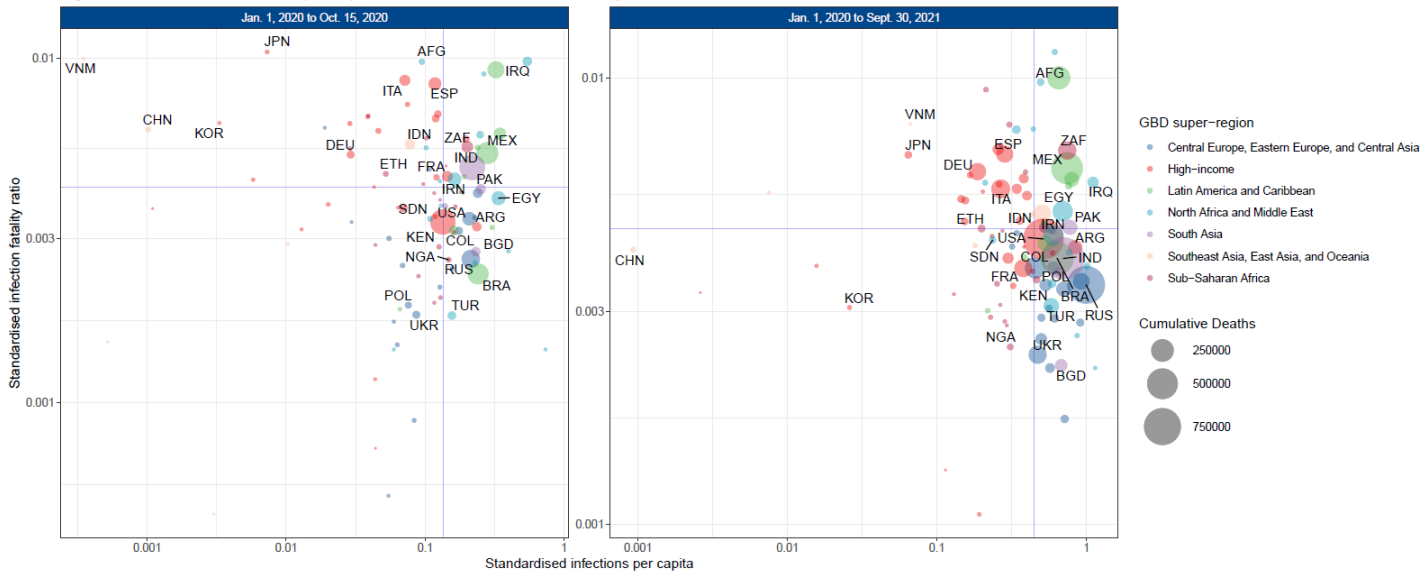
245
 246

247 5.4 Analyses for seroprevalence study locations (n=303 nationals and
248 subnationals, n=101 nationals only)
249 Figure 5.4.1: Seroprevalence study locations



250

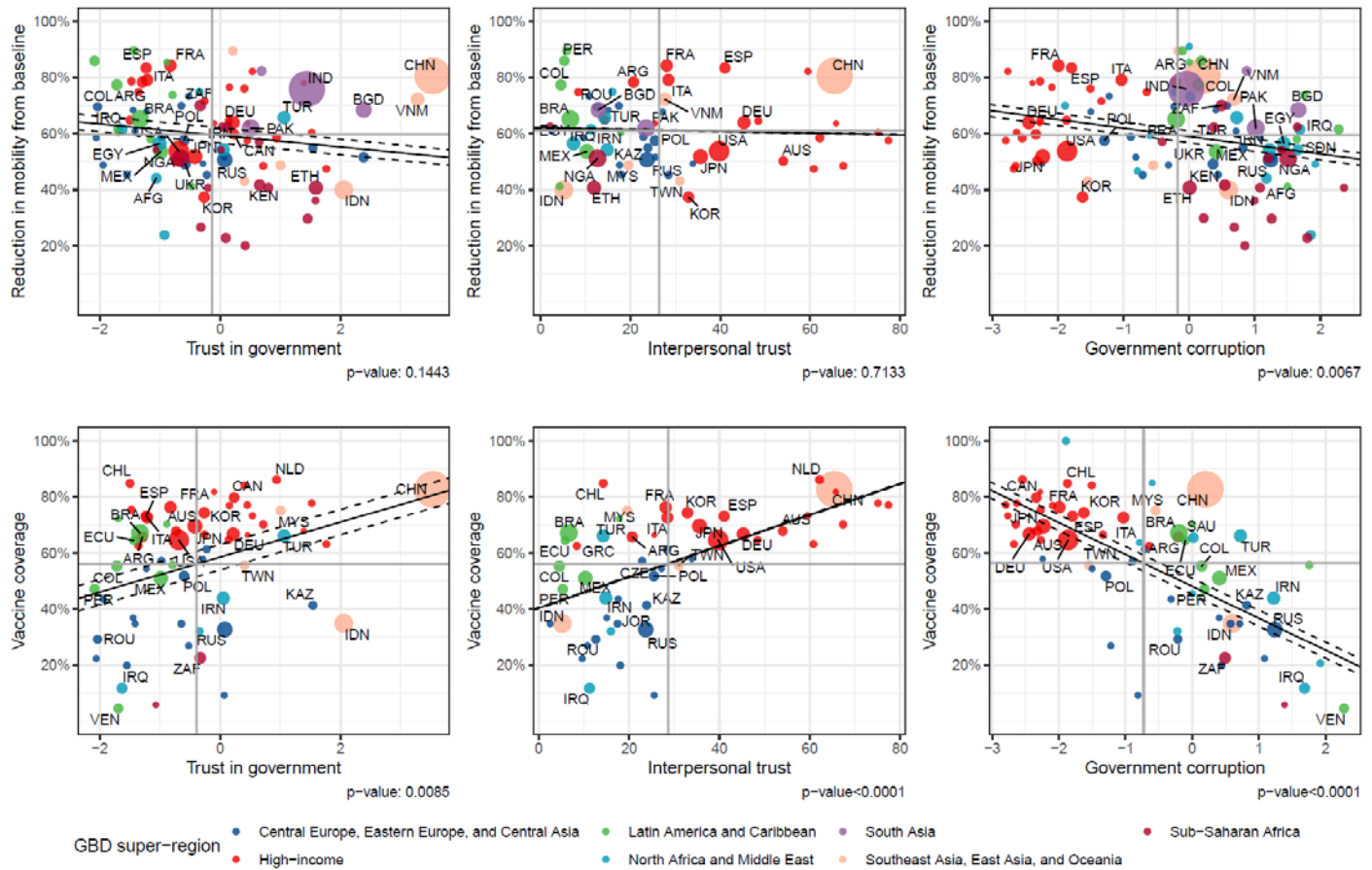
Figure 2: Standardised infections per capita and standardised infection fatality ratios



251
252
253
254

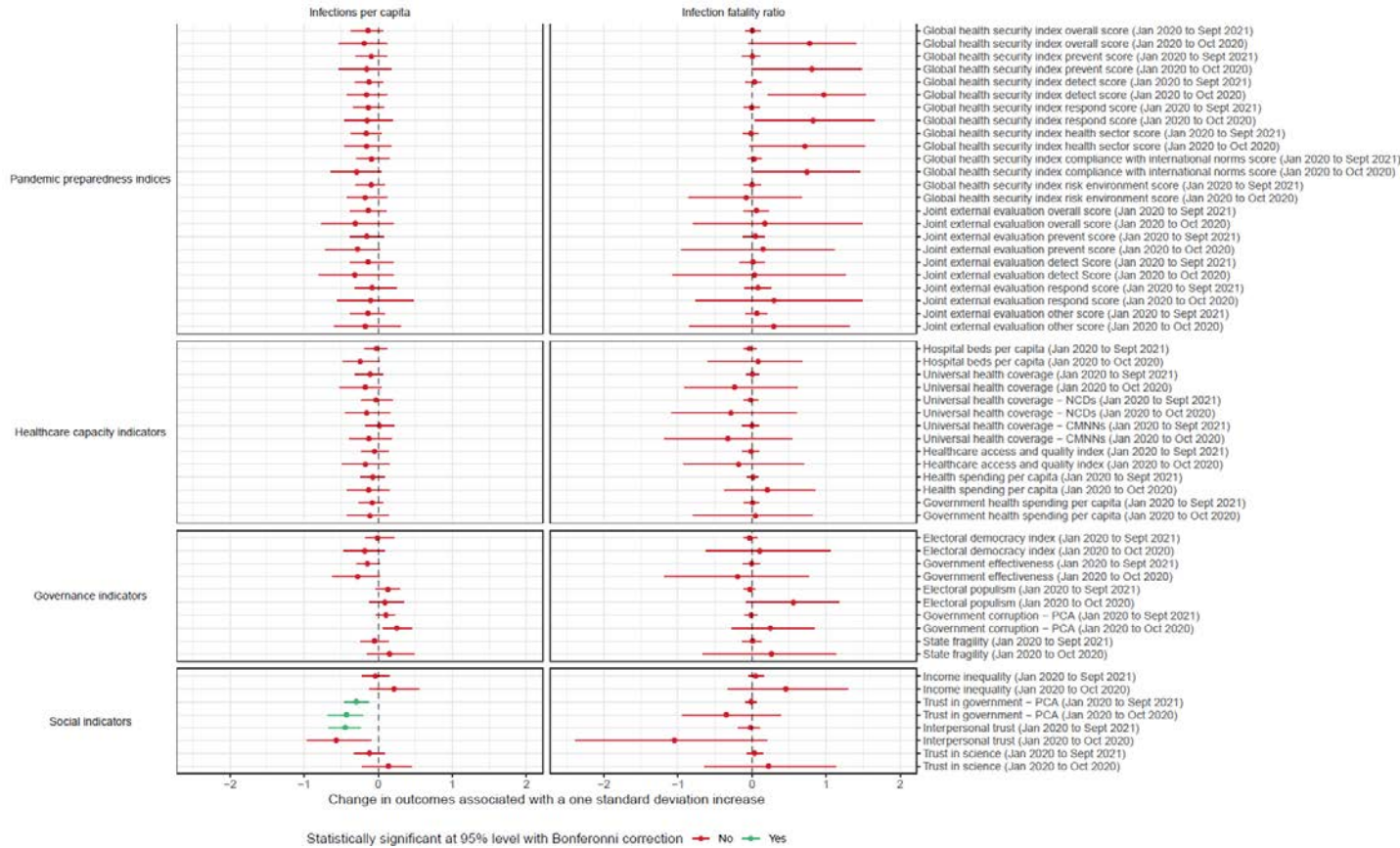
Figure 5.4.2: Infections vs. IFR

Figure 5.4.3: Intermediate pathways, vaccine coverage, and mobility change, January 1, 2020 – September 30, 2021



255

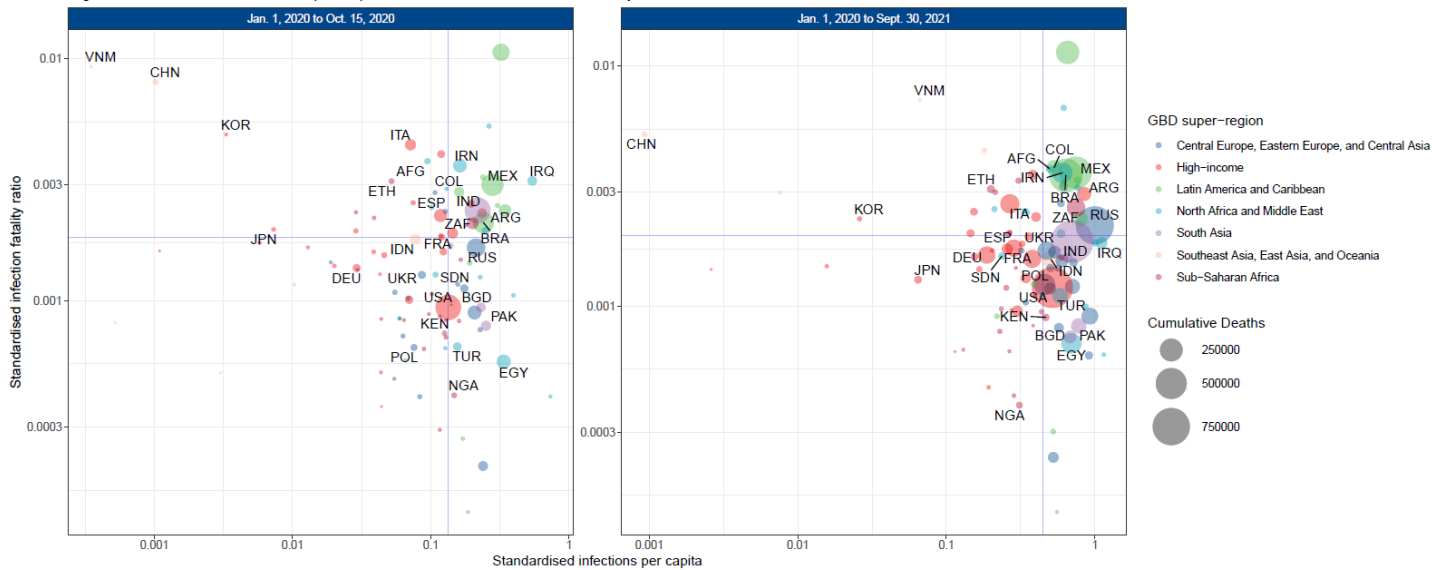
Figure 5.4.4 Bivariate results



5.5 Analyses using only reported COVID deaths

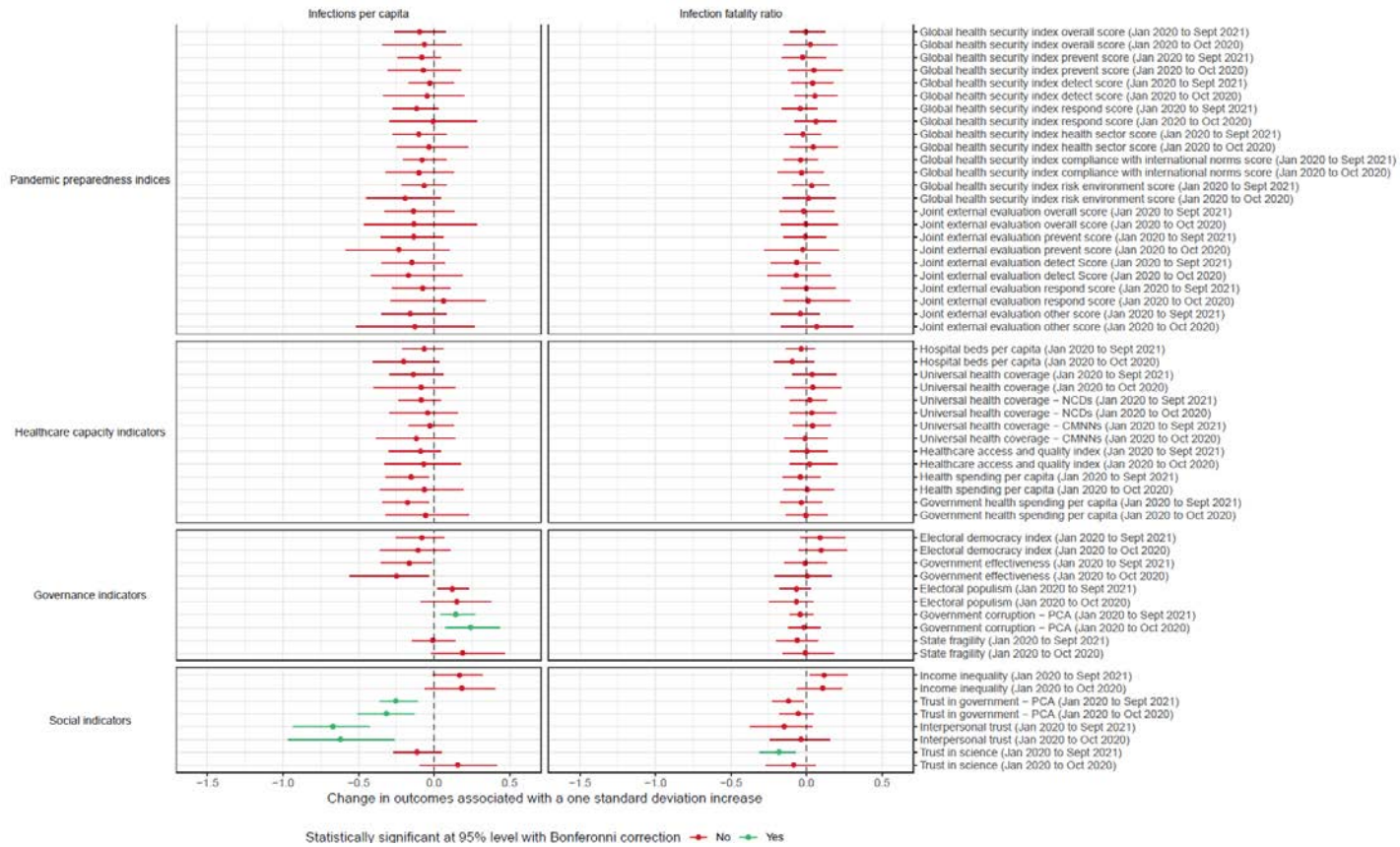
Figure 5.5.1: Infections vs. IFR

Figure 2: Standardised infections per capita and standardised infection fatality ratios



261

Figure 5.5.2 Bivariate plots
Figure 3: Associations between key preparedness, capacity, governance, and social indicators and infections and infection fatality ratio



262

263

264

5.6 Scatter of raw data versus adjusted for stage 1 variables – IFR and cumulative infections

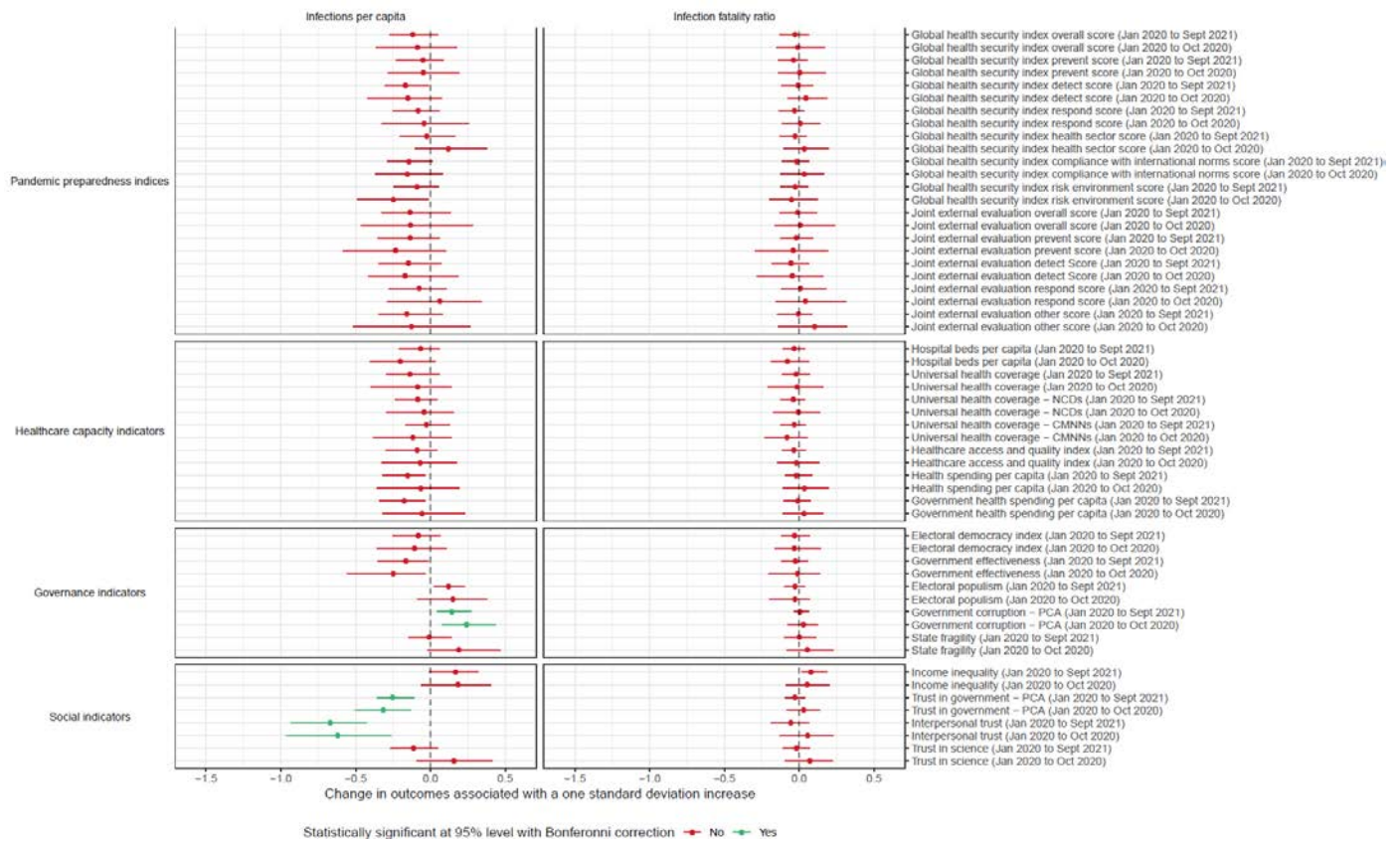


265

266
267

5.7 Using 2021 Global Health Security Index metrics in lieu of 2019 metrics, bivariate results

Figure 3: Associations between key preparedness, capacity, governance, and social indicators and infections and infection fatality ratio



268
269

270 Section 6: Author Contributions

271

272 Managing the estimation or publications process

273 Erin N Hulland and Joseph L Dieleman

274 Writing the first draft of the manuscript

275 Thomas J Bollyky and Erin N Hulland

276 Primary responsibility for applying analytical methods to produce estimates

277 Erin N Hulland, Reed J D Sorenson, and Mark Moses

278 Primary responsibility for seeking, cataloguing, extracting, or cleaning data; designing or coding figures and tables

280 Bree Bang-Jensen, Emily Combs, Joseph L Dieleman, Samuel B Ewald, Alize J Ferrari, John

281 Gallagher, Gaorui Guo, Monika Helak, Erin N Hulland, Casey Johanns, Kate E LeGrand, Akiaja

282 Lindstrom, Ana M Mantilla Herrera, Ali H Mokdad, Mark Moses, Christopher J L Murray,

283 Paulami Naik, James Kevin O'Halloran, Maja Pasovic, Louise Penberthy, David M Pigott, Damian

284 Francesco Santomauro, Reed J D Sorensen, Emma Spurlock, and Anh T Vo.

285 Providing data or critical feedback on data sources
286 Cristiana Abbafati, Christopher Adolph, Bree Bang-Jensen, Thomas J Bollyky, Rachel Castellano,
287 Suman Chakrabarti, Xiaochen Dai, William James Dangel, Carolyn Dapper, Joseph L Dieleman,
288 Bruce B Duncan, Lucas Earl, Megan Erickson, Abraham D Flaxman, Nancy Fullman, Emmanuela
289 Gakidou, Bayan Galal, John Gallagher, John R Giles, Gaorui Guo, Monika Helak, Erin N Hulland,
290 Bulat Idrisov, Samantha Kiernan, Kate E LeGrand, Ian D Letourneau, Rafael Lozano, Beatrice
291 Magistro, Deborah Carvalho Malta, Johan Månsson, Fatima Marinho, Alemnesh H Mirkuzie, Ali
292 H Mokdad, Lorenzo Monasta, Christopher J L Murray, Shuhei Nomura, Latera Tesfaye Olana,
293 Maja Pasovic, Valeria Maria de Azeredo Passos, David M Pigott, Grace Reinke, Damian
294 Francesco Santomauro, Maria Inês Schmidt, Reed J D Sorensen, Emma Spurlock, Christopher E
295 Troeger, Anh T Vo, Rebecca Walcott, Simon D Wigley, Charles Shey Wiysonge, Nahom
296 Alemseged Worku, Yifan Wu, and Sarah Wulf Hanson.

297 Developing methods or computational machinery
298 Adrien Allorant, Aleksandr Y Aravkin, Ryan M Barber, Austin Carter, Emma Castro, Suman
299 Chakrabarti, James K Collins, Xiaochen Dai, William James Dangel, Joseph L Dieleman, Tatiana
300 Fedosseeva, Abraham D Flaxman, John R Giles, Gaorui Guo, Jiawei He, Erin N Hulland, Emily
301 Linebarger, Ali H Mokdad, Mark Moses, Christopher J L Murray, Robert C Reiner Jr, Aleksei
302 Sholokhov, Reed J D Sorensen, Christopher E Troeger, Sarah Wulf Hanson, and Peng Zheng.

303 Providing critical feedback on methods or results
304 Cristiana Abbafati, Christopher Adolph, Ryan M Barber, Thomas J Bollyky, James K Collins,
305 Xiaochen Dai, Joseph L Dieleman, Emmanuela Gakidou, Simon I Hay, Erin N Hulland, Paulo A
306 Lotufo, Rafael Lozano, Deborah Carvalho Malta, Alemnesh H Mirkuzie, Ali H Mokdad,
307 Christopher J L Murray, Latera Tesfaye Olana, Samuel M Ostroff, Maja Pasovic, David M Pigott,
308 Robert C Reiner Jr, Reed J D Sorensen, Emma Spurlock, Christopher E Troeger, Theo Vos, Ally
309 Walker, Simon D Wigley, Charles Shey Wiysonge, and Nahom Alemseged Worku.

310 Drafting the work or revising is critically for important intellectual content
311 Cristiana Abbafati, Thomas J Bollyky, James K Collins, Joseph L Dieleman, Simon I Hay, Erin N
312 Hulland, Paulo A Lotufo, Deborah Carvalho Malta, Alemnesh H Mirkuzie, Ali H Mokdad, Lorenzo
313 Monasta, Christopher J L Murray, Reed J D Sorensen, Elena Varavikova, and Charles Shey
314 Wiysonge.

315 Managing the overall research enterprise
316 Joanne O Amlag, William James Dangel, Amanda Deen, Joseph L Dieleman, Simon I Hay, Erin N
317 Hulland, Bethany M Huntley, Ali H Mokdad, Christopher J L Murray, Christopher M Odell, and
318 Emma Spurlock.
319

320 Section 7: References

321 1 Modeling COVID-19 scenarios for the United States | Nature Medicine.
322 <https://www.nature.com/articles/s41591-020-1132-9> (accessed May 5, 2021).

323 2 GBD 2019 Risk Factors Collaborators. Global burden of 87 risk factors in 204 countries and
324 territories, 1990-2019: a systematic analysis for the Global Burden of Disease Study 2019.
325 *Lancet* 2020; **396**: 1223–49.

- 326 3 Lozano R, Fullman N, Mumford JE, *et al.* Measuring universal health coverage based on an
327 index of effective coverage of health services in 204 countries and territories, 1990–2019: a
328 systematic analysis for the Global Burden of Disease Study 2019. *The Lancet* 2020; **396**: 1250–
329 84.
- 330 4 Haerpfer C, Inglehart R, Moreno A, *et al.* World Values Survey: Round Seven -Country-Pooled
331 Datafile. *Madrid, Spain & Vienna, Austria: JD Systems Institute & WVSA Secretariat* 2020.
332 DOI:doi.org/10.14281/18241.1.
- 333 5 Gallup (2019) Wellcome Global Monitor – First Wave Findings.
- 334 6 Gallup Analytics World Poll 2018 - Government and Politics.
- 335 7 Transparency International. CORRUPTION PERCEPTIONS INDEX. 2019.
336 <https://www.transparency.org/en/cpi/2019/index/nzl>.
- 337 8 Shahpar C, Lee CT, Wilkason C, Buissonnière M, McClelland A, Frieden TR. Protecting the
338 world from infectious disease threats: now or never. *BMJ Glob Health* 2019; **4**.
339 DOI:[10.1136/bmjgh-2019-001885](https://doi.org/10.1136/bmjgh-2019-001885).
- 340 9 The Global Health Security Index. GHS Index. <https://www.ghsindex.org/> (accessed May 5,
341 2021).
- 342 10 Solt, Frederick. The Standardized World Income Inequality Database, Versions 8.
343 Harvard Dataverse, 2019. <https://doi.org/10.7910/DVN/LM4OWF>
- 344 11 Bosancianu CM, Dionne KY, Hilbig H, *et al.* Political and Social Correlates of Covid-19
345 Mortality. SocArXiv, 2020 DOI:[10.31235/osf.io/ub3zd](https://doi.org/10.31235/osf.io/ub3zd).
- 346 12 Kyle, Jordan, and Brett Meyer. 2020. “High Tide? Populism in Power, 1990-2020.”
347 Working Paper. Tony Blair Institute
- 348 13 The World Bank. Worldwide Governance Indicators.
349 <https://databank.worldbank.org/databases/governance-effectiveness>
- 350 14 The Fund for Peace. Fragile States Index. <https://fragilestatesindex.org/>
- 351 15 Cruz C, Keefer P, Scartascini C. The Database of Political Institutions 2020 (DPI2020).
352 *Inter-American Development Bank* 2021; published online Jan.
353 DOI:<http://dx.doi.org/10.18235/0003049>.
- 354 16 Coppedge M, Gerring J, Knutsen CH, *et al.* V-Dem Dataset v10. *Varieties of Democracy*
355 (*V-Dem*) Project 2020. DOI:<https://doi.org/10.23696/vdemds20>.

- 356 17 Pemstein D, Marquardt K, Tzelgov E, et al. The V-Dem Measurement Model: Latent
357 Variable Analysis for Cross-National and Cross-Temporal Expert-Coded Data.V-Dem Working
358 Paper No. 21. *University of Gothenburg: Varieties of Democracy Institute; 6th edition.*
- 359 18 Pemstein D, Marquardt K, Tzelgov E, et al. The V-Dem Measurement Model: Latent
360 Variable Analysis for Cross-National and Cross-Temporal Expert-Coded Data.V-Dem Working
361 Paper No. 21. *University of Gothenburg: Varieties of Democracy Institute; 5th edition.*
- 362 19 Coppedge M, Gerring J, Knutsen CH, et al. V-Dem Dataset v11. *Varieties of Democracy*
363 (*V-Dem*) Project 2021. DOI:<https://doi.org/10.23696/vdemds21>.
- 364 20 Global Burden of Disease Health Financing Collaborator Network. Tracking Development
365 Assistance for Health and for COVID-19: a review of development assistance, government,
366 out-of-pocket, and other private spending on health for 204 countries and territories, 1990-
367 2050. *Lancet* Forthcoming.
- 368 21 IUCN. The IUCN Red List of Threatened Species. 2021 <https://www.iucnredlist.org>.
- 369 22 Becker DJ, Albery GF, Sjodin AR, et al. Predicting wildlife hosts of betacoronaviruses for
370 SARS-CoV-2 sampling prioritization: a modeling study. *bioRxiv* 2020; 2020.05.22.111344.
- 371 23 Le Bert N, Tan AT, Kunasegaran K, et al. SARS-CoV-2-specific T cell immunity in cases of
372 COVID-19 and SARS, and uninfected controls. *Nature* 2020; **584**: 457–62.
- 373 24 Huang J, Teoh JY-C, Wong SH, Wong MCS. The potential impact of previous exposure to
374 SARS or MERS on control of the COVID-19 pandemic. *Eur J Epidemiol* 2020; **35**: 1099–103.
- 375 25 Pinotti F, Wikramaratna PS, Obolski U, et al. Potential impact of individual exposure
376 histories to endemic human coronaviruses on age-dependent severity of COVID-19. *BMC*
377 *Medicine* 2021; **19**: 19.
- 378 26 Josse J, Husson F. missMDA: A Package for Handling Missing Values in Multivariate Data
379 Analysis. *Journal of Statistical Software* 2016; **70**: 1–31.

380