

Supplementary Tables

Table S1: Baseline characteristics without removing those whose route of arrival was 'other'

| Factor | Stockport | | | Fairfield | | |
|----------------------------------|--|---|-------|--|--|--------|
| | Before implementation (n=79) | Implementation n (n=130) | p | Before implementation n (n=39) | Implementation n (n=95) | p |
| Age | 81 (72.5 – 85) | 77.5 (69 – 83) | 0.162 | 73.0 (62.5 – 79) | 75.0 (64 – 84) | 0.152 |
| Premorbid mRS (0-2); n(%) | 58 (73.4%) Missing:1 | 105 (80.8%) | 0.361 | 29 (74.4%) | 82 (86.3%) | 0.157 |
| Anticoagulant; n(%) | 17 (21.5%) Missing: 1 | 29 (22.3%) | 1.000 | 6 (15.4%) | 26 (27.4%) | 0.209 |
| Sex (female); n(%) | 42 (53.2%) | 72 (55.4%) | 0.866 | 15 (38.5%) | 49 (51.6%) | 0.234 |
| GCS | 15 (12 - 15) Missing:1 | 15 (11 - 15) | 0.355 | 15 (13 - 15) | 15 (13 – 15) | 0.233 |
| Route of arrival; n(%) | Direct 65 (82.3%) Transfer 9 (11.4%) Other 3 (3.8%) In-patient 2 (2.1%) | Direct 86 (66.2%) Transfer 20 (15.4%) Other 23 (17.7%) In-patient 1 (0.8%) | 0.012 | Direct 27 (69.2%) Transfer 2 (5.1%) Other 10 (25.2%) | Direct 78 (82.1%) Transfer 16 (16.8%) Other 1 (1.1%) | <0.001 |
| SBP on admission | 159 (141 – 184) Missing: 1 | 165 (146 – 185) | 0.438 | 162 (137 – 191) Missing: 1 | 157 (138 – 181) | 0.418 |
| Infratentorial; n(%) | 10 (12.7%) Missing: 2 | 11 (8.5%) | 0.421 | 4 (10.3%) Missing: 4 | 6 (6.3%) | 0.549 |
| IVH; n(%) | 23 (29.1%) | 45 (34.6%) | 0.583 | 3 (7.7%) | 16 (16.8%) | 0.22 |

| | | | | | | |
|-------------------------|---|---|-------|--|---|-------|
| | | | | Missing: 5 | | |
| ICH volume (ml) | 13.5 (3.1 – 33.8) | 16.2 (5.9 – 44.1) | 0.231 | 21.1 (3.4 – 44.2) Missing: 6 | 11.0 (3.6 – 23.5) Missing: 1 | 0.301 |
| Death by 30-days | 26 (32.9%) Missing: 3 | 42 (32.3%) Missing: 3 | 0.99 | 9 (23.1%) Missing: 1 | 23 (24.2%) | 1.00 |
| mRS at 6 months | 0-1: 16 (20.2%) 2-3: 8 (10.1%) 4-5: 12 (15.2%) 6: 35 (44.3%) Missing: 8 (10.1%) | 0-1: 24 (18.4%) 2-3: 22 (16.9%) 4-5: 24 (18.5%) 6: 51 (39.2%) Missing: 9 (6.9%) | 0.406 | 0-1: 5 (12.8%) 2-3: 4 (10.3%) 4-5: 5 (12.9%) 6: 14 (35.9%) Missing: 11 (28.2%) | 0-1: 24 (25.2%) 2-3: 11 (11.6%) 4-5: 7 (7.4%) 6: 40 (42.1%) Missing: 13 (13.7%) | 0.003 |

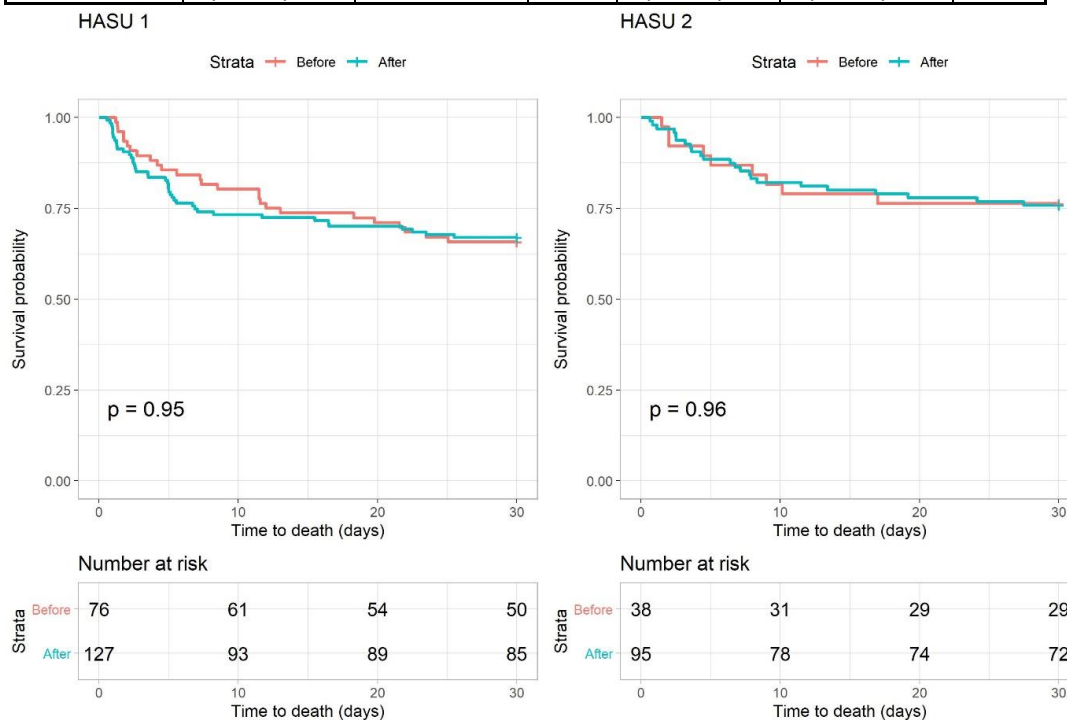


Figure S1: Kaplan Meier survival curves for HASUs 1&2 for the unselected population. Logrank test was performed to test for any significant difference between those admitted before (red line) and after (blue line) care bundle implementation commenced (1 Apr 2017).