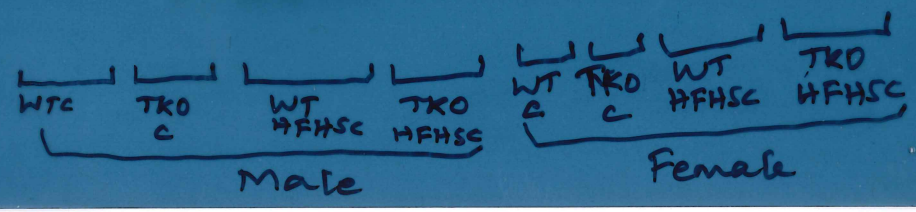
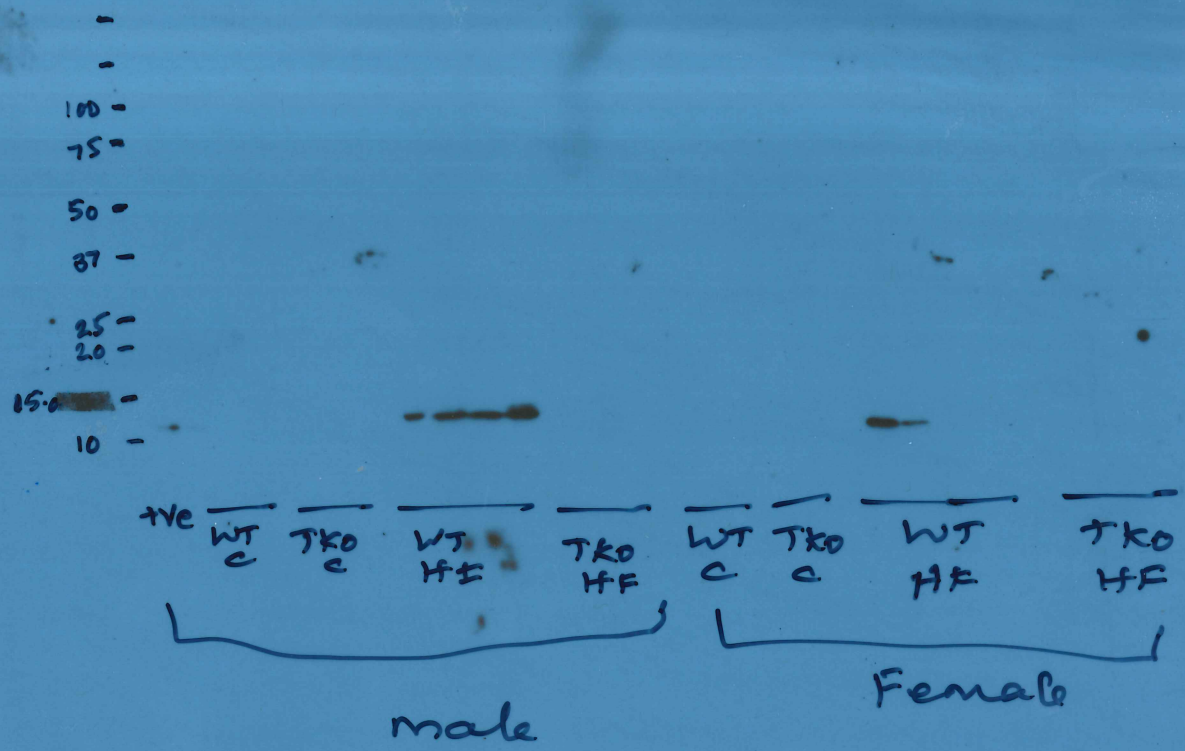


11/11/11
K-0010
1:5000
1:15,200
K-0010



Scrb9 pad extract exp 022720

12/8/21



Advanced ECL - 10 min

1:1000 Abcam Anti SAA

1:25,000 anti Rb

EXP 022720

Date: 12/7/21

Subq Fat extract

Well	Sample	50µg	Buffer	4 X SDS (µl)	Load (µl)
		[Protein] (µg/µl)	Protein (µg) / Volume (µl)		
1	mol wt markers	-	-	-	15 µl
2	± VE C (TgFSAA 1µl)		1	14	5 µl / 15 µl
3	WT-C #1		8.9	6.1	
4	" #2		12.5	2.5	
5	" #3		11.3	3.7	
6	TKO-C #7		11.0	4.0	
7	" #8		8.1	6.9	
8	" #9		11.7	3.3	
9	WT-HFHSC #12 (Leaked)		10.1	4.9	
10	" #12		10.1	4.9	
11	" #14		11.1	3.9	
12	" #15		10.9	4.1	
13	TKO-HFHSC #16		18.6	-	
14	" #17		15.3	-	
15	" #19		11.5	3.5	
16	WTC #26		10.4	4.6	
17	" #27		9.3	5.7	
18	TKOC #32		8.4	6.6	
19	" #33		8.3	6.7	
20	WT-HFHSC #36		18.9	0	
21	" 37		15.9	0	
22	" 38		13.5	1.5	
23	TKO-HFHSC #41		18.4	-	
24	" #42		20.3	-	
25	" 43		20.2	-	
26					

5-20% SDS

4-18% GGE

Other:

Reduced

Non-Reduced

Boil Samples

DO NOT BOIL

Abcam SAA

Coomassie

Transfer:

1° = 1:10000 2° = 1:25,000

Antisubst

ARG for _____

Gel label/orientation

