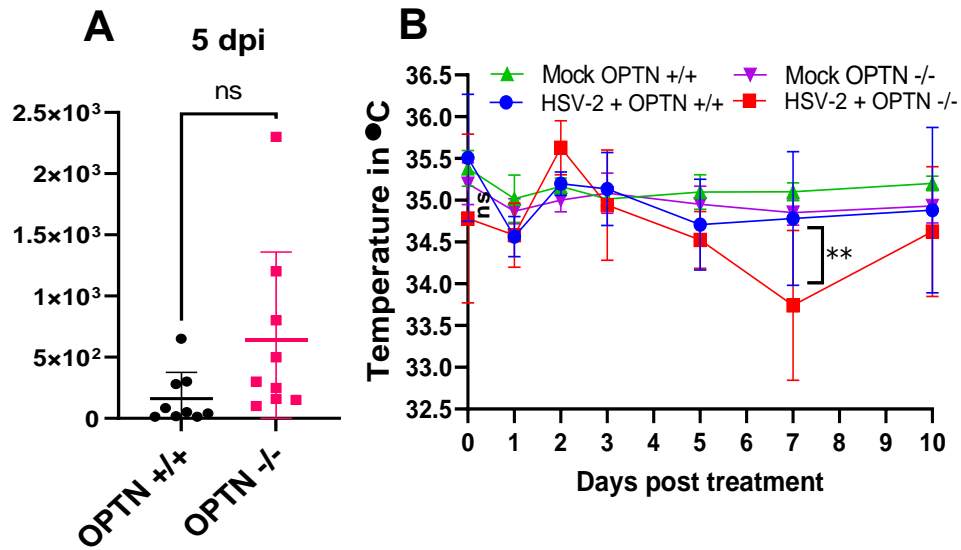


Supplementary Table-1

List of primers and their sequences used in the study.

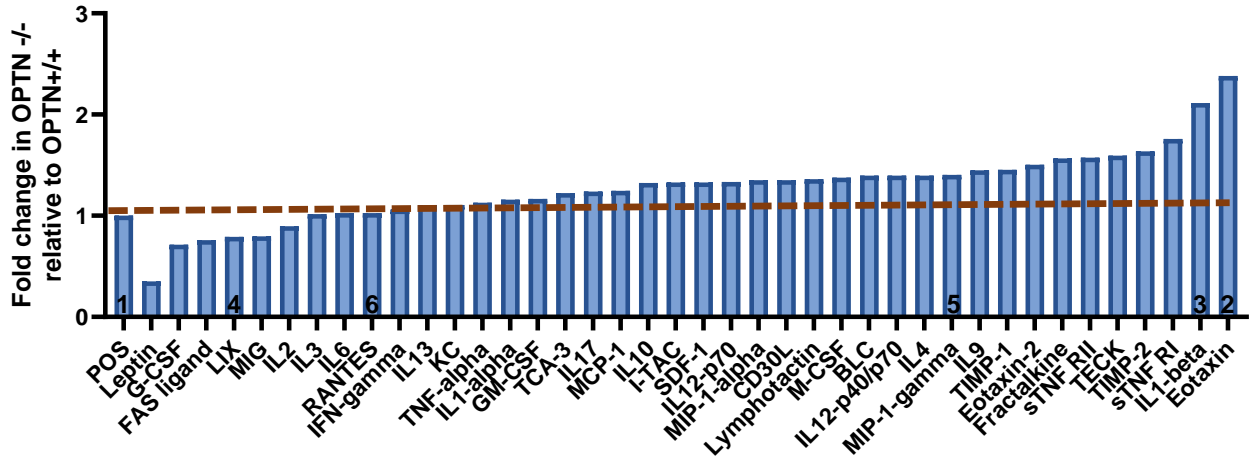
Name:	Sequence:
Human GAPDH F (forward)	5'- TCCACTGGCGTCTTCACC-3'
Human GAPDH R (reverse)	5'- GGCAGAGATGATGACCCTTTT-3'
Human IFN- α F	5'- GAT GGC AAC CAG TTC CAG AAG -3'
Human IFN- α R	5'- AAA GAG GTT GAA GAT CTG CTG GAT -3'
Human IFN- β F	5'- CTC CAC TAC AGC TCT TTC CAT -3'
Human IFN- β R	5'- GTC AAA GTTC ATC CTG TCC TT -3'
Human IL-6 F	5'-AGACAGCCACTCACCTCTTCAG-3'
Human IL-6 R	5'-TTCTGCCAGTGCCTCTTTGCTG-3'
Human TNF- α F	5'-CTCTTCTGCCTGCTGCACTTTG-3'
Human TNF- α R	5'-ATGGGCTACAGGCTTGTCACTC-3'
Human CCL5 F	5'-TGTACTCCCGAACCCATTTC-3'
Human CCL5 R	5'-TACACCAGTGGCAAGTGCTC-3'
Mouse β -actin F	5'-GACGGCCAGGTCATCACTATTG-3'
Mouse β -actin R	5'-AGG AAGGCTGGAAAAGAGCC-3'
Mouse IFN- α F	5'-CCTGCTGGCTGTGAAAT-3'
Mouse IFN- α R	5'-GACAGGGCTCTCCAGACTTC-3'
Mouse IFN- β F	5'-TGTCCTCAACTGCTCTCCAC-3'
Mouse IFN- β R	5'-CATCCAGGCGCTGTTGT-3'
Mouse IL-6 F	5'-ACGGCCTTCCCTACTTCACA-3'
Mouse IL-6 R	5'-CATTTCACGATTTCCGAGA-3'
Mouse CXCL10 F	5'-ATCATCCCTGCGAGCCTATCCT-3'
Mouse CXCL10 R	5'-GACCTTTTTTGGCTAAACGCTTTC-3'
Mouse CCL5 F	5'-CCTGCTGCTTTGCCTACCTCTC-3'
Mouse CCL5 R	5'-ACACACTTGGCGGTTCTTCGA-3'
HSV-2 gB F	5'- GCCTTTTGTGTGTGTGTGGG-3'
HSV-2 gB R	5'- GCCTTTTGTGTGTGTGTGGG-3'

Supplementary figure1:



Supplementary figure1: (A) Genital swabs were taken from HSV-2 333 infected OPTN +/+ and OPTN -/- animals at 5 day post infection (B) Temperature check was performed on both mock infected and HSV-2 infected groups with digital thermometer at the anal periphery from day 0 to day 10 post infection. Data represent three independent experiments with similar results, n=3-5 samples/group/genotype/condition. Error bar represent means \pm SEM. Significance was determined by two-way ANOVA with Šídák's multiple comparisons test. *p < 0.05; **p < 0.01; ***p < 0.001, ****p < 0.0001, ns, not significant.

Supplementary figure2:



Supplementary figure 2: Inflammation antibody array profile of mouse inflammatory proteins in vaginal tissue of OPTN +/+ and OPTN-/- animals infected with 1×10^6 PFU HSV-2 333 strain for 24h. Numbers indicate the position of controls and selective cytokines on array; 1 and 7 - Positive control, 2-Eotaxin, 3-IL-1- β , 4-Lix, 5-MIP-1-gamma, 6-CCL5.