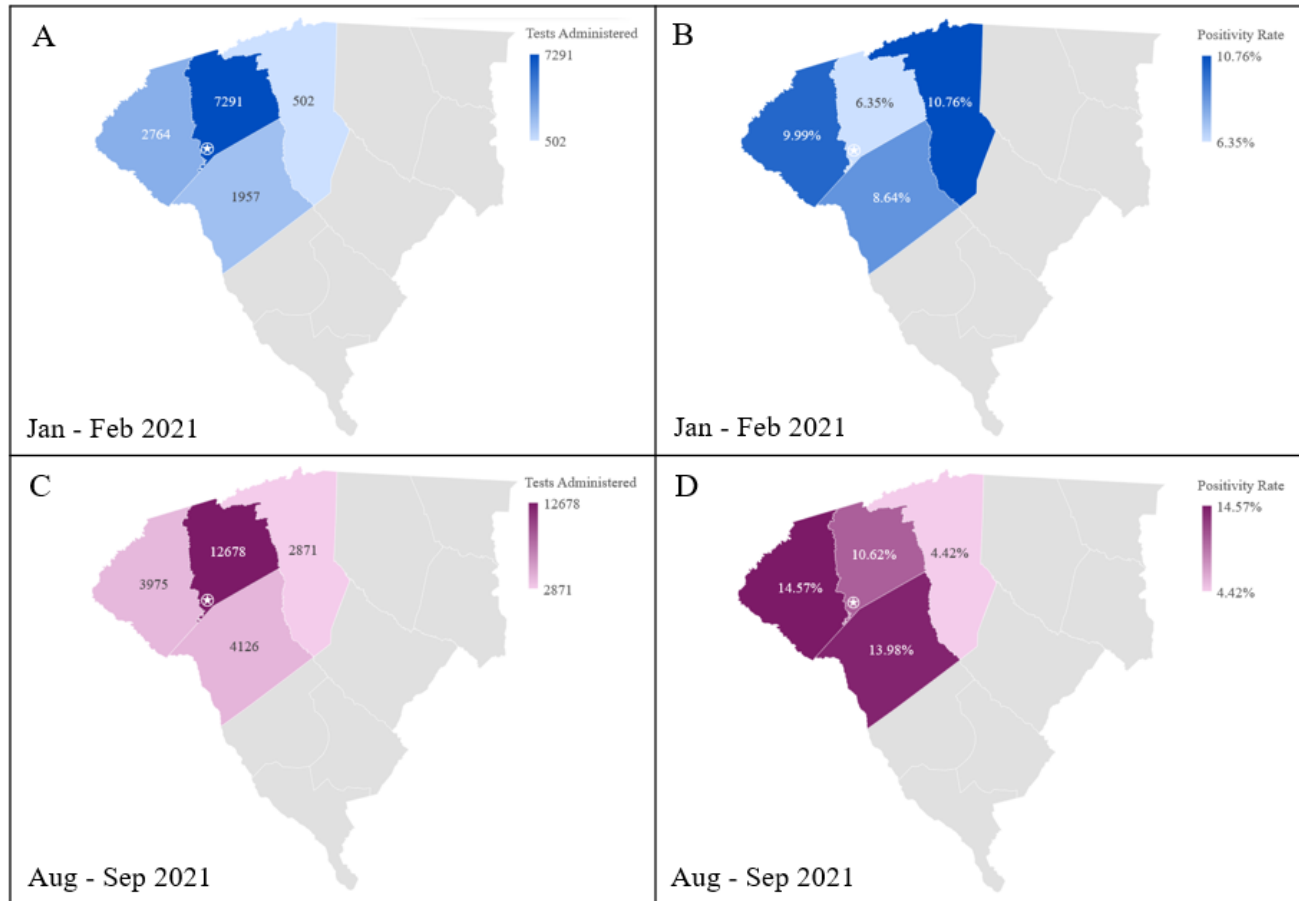
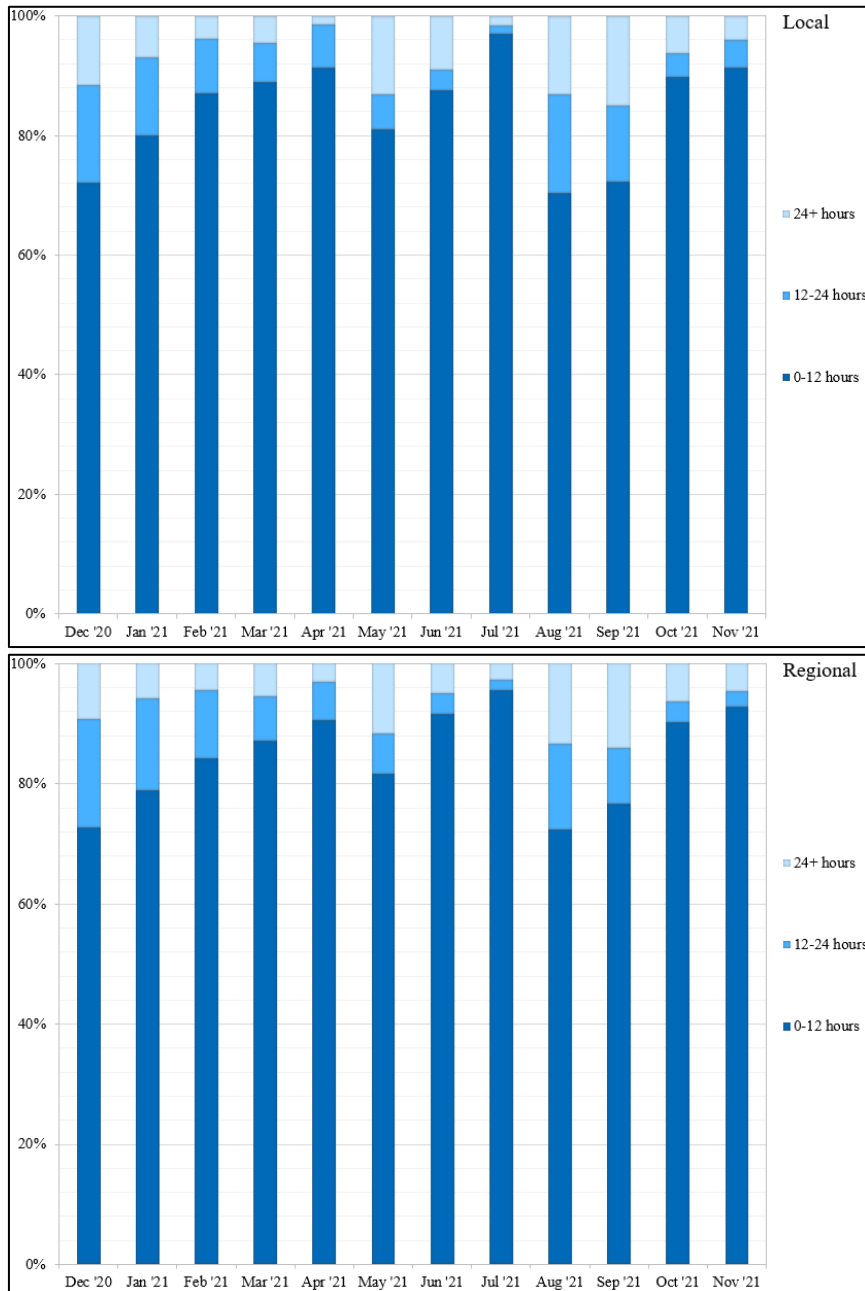


Supplementary Material



Supplementary Figure 1. Relationship between positivity rate/testing quantity and geographic distribution across Upstate South Carolina during two SARS-CoV-2 outbreaks. Only Pickens, Oconee, Anderson, and Greenville Counties met a minimum number of tests (500) appropriate for analysis. The star indicates Clemson University. The top two panels display the number of tests administered by the REDDI Laboratory (**A**) and the percentage of positive cases (**B**) throughout Jan-Feb 2021. The bottom two panels display the number of tests administered by the REDDI Lab (**C**) and the percentage of positive cases (**D**) throughout Aug-Sept 2021. The changing strain composition during these outbreaks may have contributed to variations in disease prevalence.



Supplementary Figure 2. Turn-around time for the Local and Regional Community groups. Turn around time was similar between the two groups.