

Supplemental Online Content

Ocak G, Boenink R, Noordzij M, et al. Trends in mortality due to myocardial infarction, stroke, and pulmonary embolism in patients receiving dialysis. *JAMA Netw Open*. 2022;5(4):e227624. doi:10.1001/jamanetworkopen.2022.7624

eFigure 1. Age and Sex Distribution of Patients Receiving Dialysis and the General Population

eFigure 2. Incidence of Fatal Myocardial Infarction in Patients Receiving Dialysis and the General Population

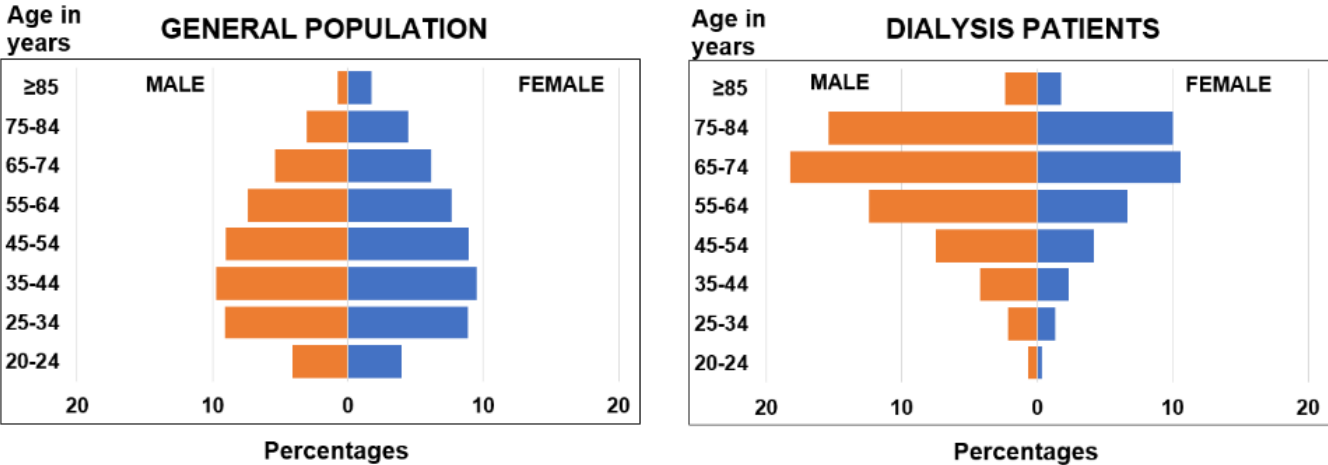
eFigure 3. Incidence of Fatal Stroke in Patients Receiving Dialysis and the General Population

eFigure 4. Incidence of Fatal Pulmonary Embolism in Patients Receiving Dialysis and the General Population

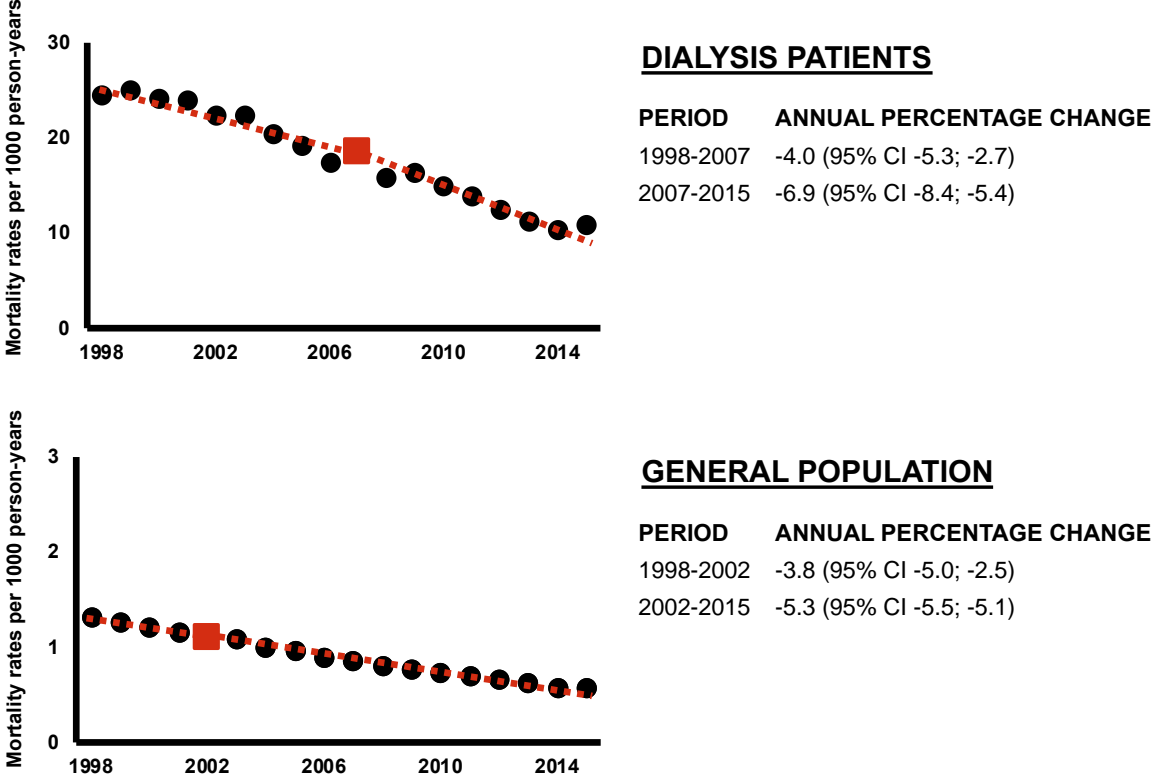
eFigure 5. Incidence of Causes of Death Other Than Myocardial Infarction, Stroke and Pulmonary Embolism in Patients Receiving Dialysis and the General Population

This supplemental material has been provided by the authors to give readers additional information about their work.

eFigure 1. Age and Sex Distribution of Patients Receiving Dialysis and the General Population

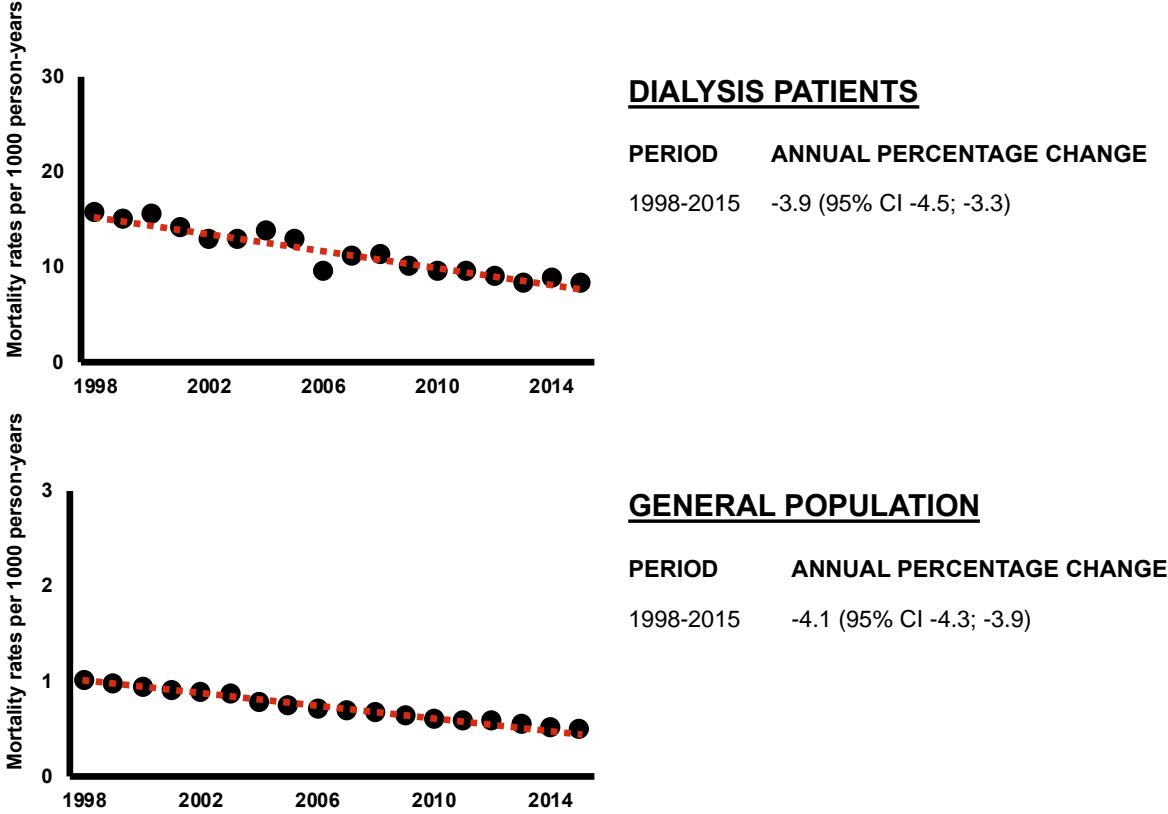


eFigure 2. Incidence of Fatal Myocardial Infarction in Patients Receiving Dialysis and the General Population

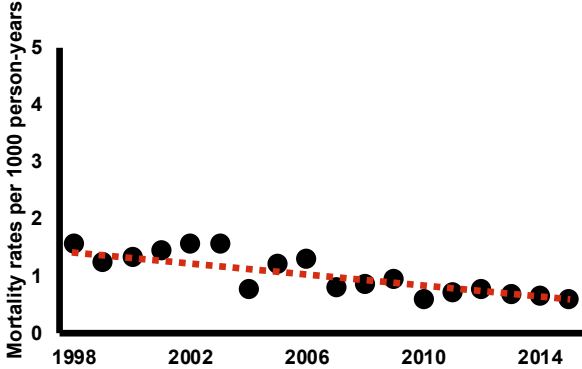


Squares represent joinpoints.

eFigure 3. Incidence of Fatal Stroke in Patients Receiving Dialysis and the General Population

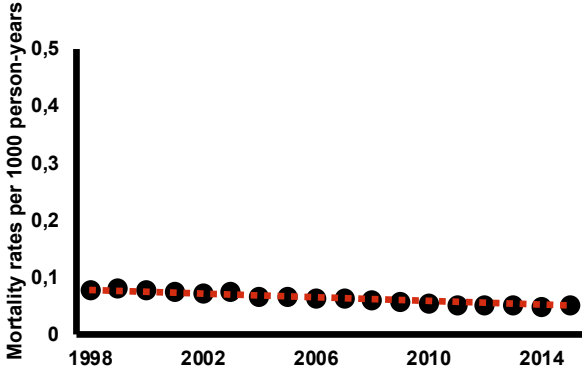


eFigure 4. Incidence of Fatal Pulmonary Embolism in Patients Receiving Dialysis and the General Population



DIALYSIS PATIENTS

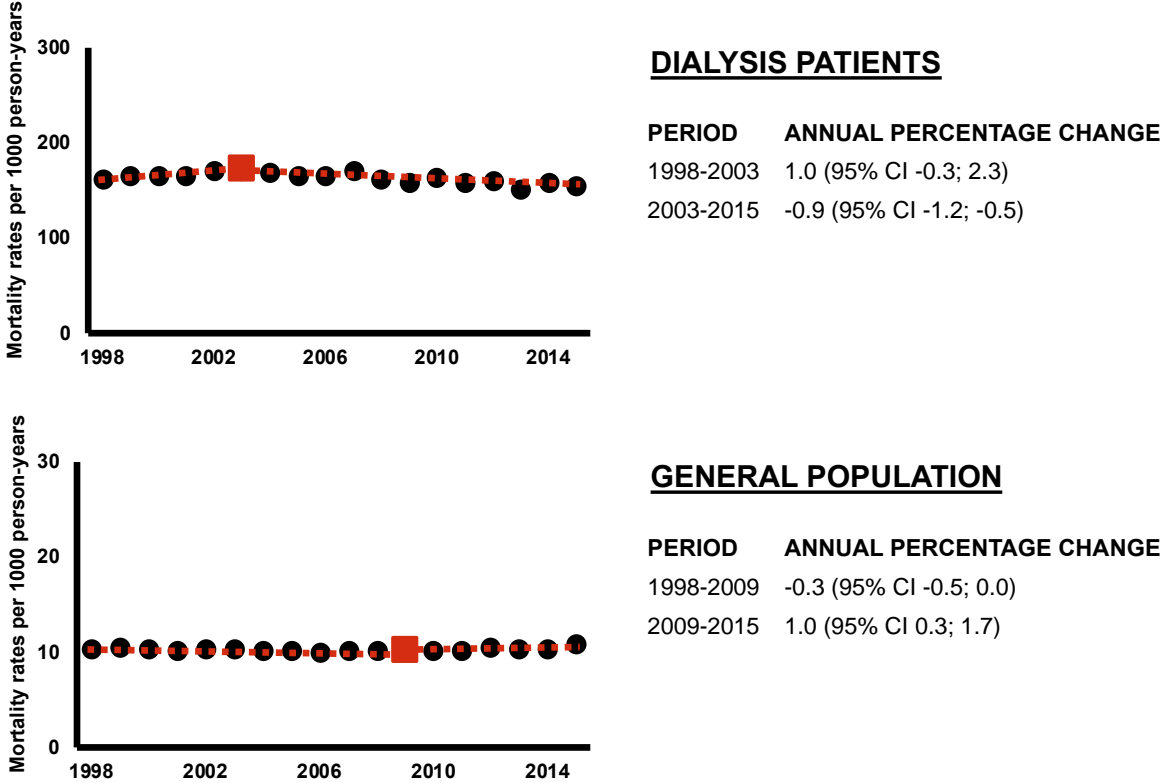
PERIOD ANNUAL PERCENTAGE CHANGE
1998-2015 -5.6 (95% CI -7.2; -3.9)



GENERAL POPULATION

PERIOD ANNUAL PERCENTAGE CHANGE
1998-2015 -3.2 (95% CI -3.4; -2.9)

eFigure 5. Incidence of Causes of Death Other Than Myocardial Infarction, Stroke and Pulmonary Embolism in Patients Receiving Dialysis and the General Population



Squares represent joinpoints.