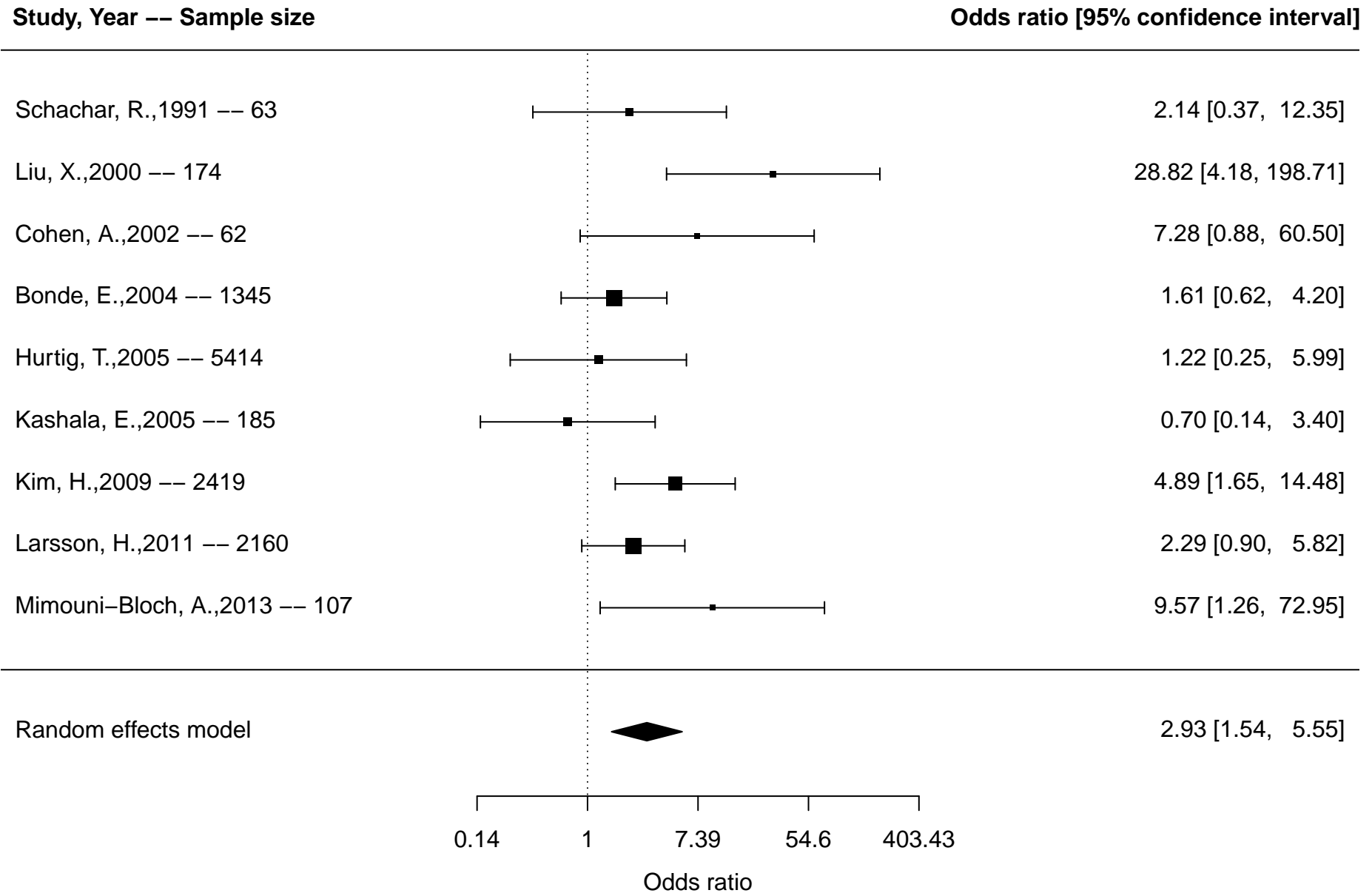


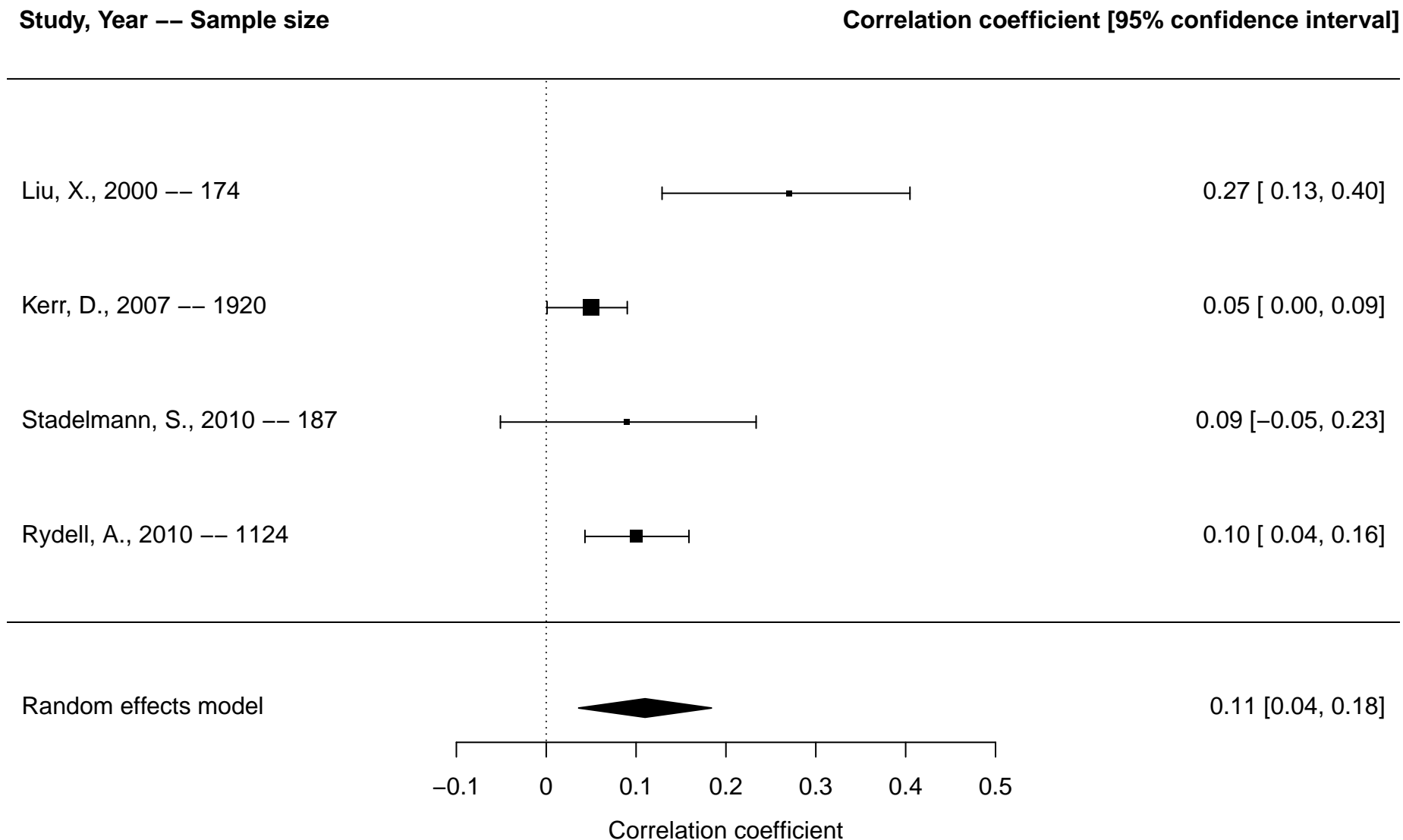
Table of Contents: Supplemental Forest plots of meta-analyses on the associations between parenting factors and ADHD	
Figure S1. Divorce and ADHD overall, dichotomous outcomes.....	2
Figure S2. Divorce and ADHD overall, continuous outcomes.....	3
Figure S3. Divorce and ADHD disorder diagnosis, dichotomous outcomes.....	4
Figure S4. Single parenting and ADHD overall, dichotomous outcomes.....	5
Figure S5. Parental incarceration and ADHD overall, continuous outcomes.....	6
Figure S6. General maltreatment and ADHD overall, dichotomous outcomes.....	7
Figure S7. General maltreatment and ADHD overall, continuous outcomes.....	8
Figure S8. General maltreatment and ADHD diagnosis, dichotomous outcomes.....	9
Figure S9. General maltreatment and inattention, continuous outcomes.....	10
Figure S10. Physical abuse and ADHD overall, continuous outcomes.....	11
Figure S11. Sensitivity/warmth and ADHD overall, continuous outcomes.....	12
Figure S12. Sensitivity/warmth and inattention, continuous outcomes.....	13
Figure S13. Sensitivity/warmth and hyperactivity/impulsivity, continuous outcomes.....	14
Figure S14. Intrusiveness/reactivity and ADHD overall, continuous outcomes.....	15
Figure S15. Negativity/harsh discipline and ADHD overall, continuous outcomes.....	16
Figure S16. Media exposure and ADHD overall, dichotomous outcomes.....	17
Figure S17. Media exposure and ADHD overall, continuous outcomes.....	18
Figure S18. Media exposure and inattention, dichotomous outcomes.....	19
Figure S19. Media exposure and inattention, continuous outcomes.....	20

**Figure S1.** Forest plot of meta-analysis of divorce and attention-deficit/hyperactivity disorder (ADHD) overall\* based on studies reporting dichotomous outcomes



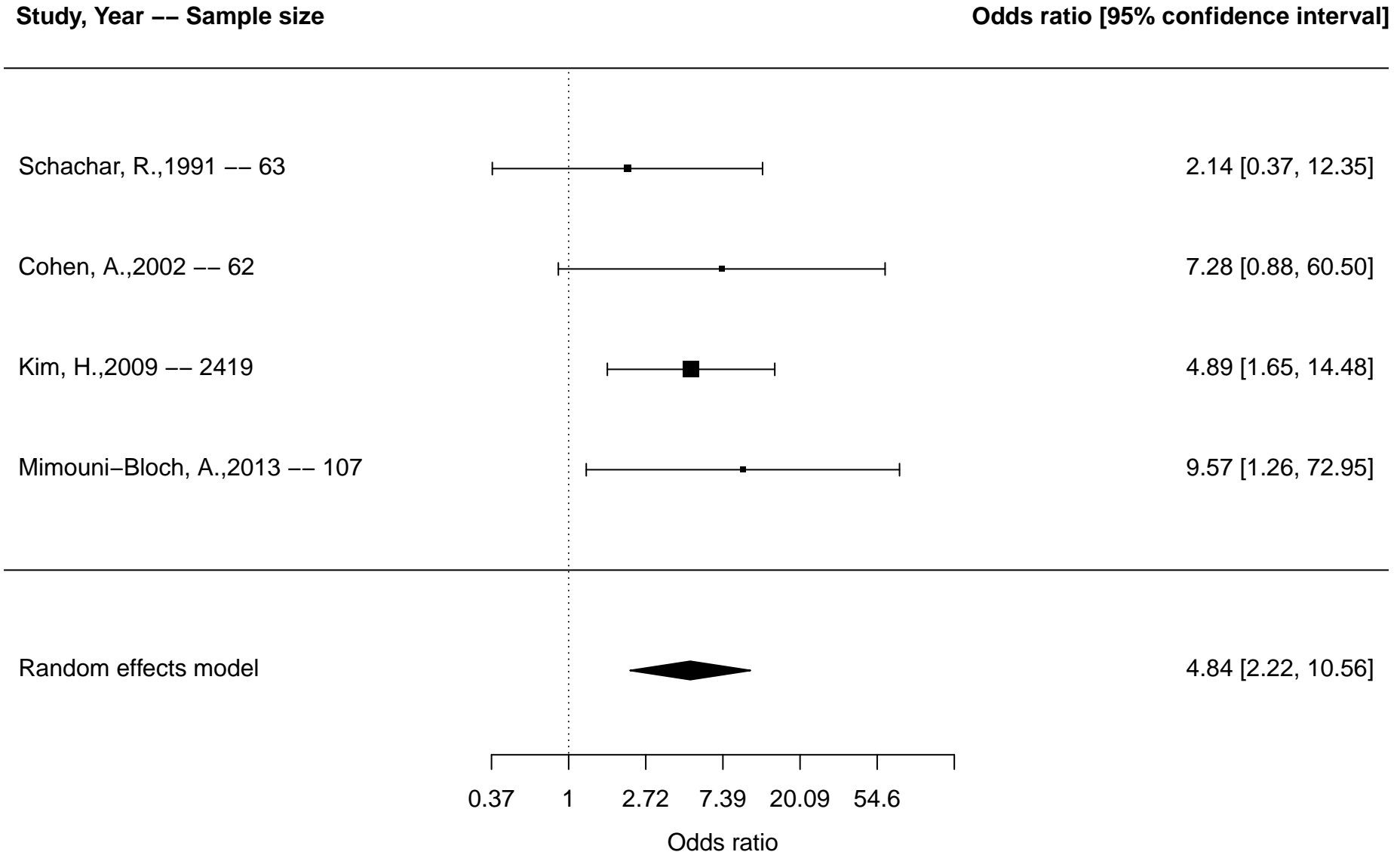
\*Overall includes studies reporting on any included ADHD outcomes (diagnosis, ADHD symptoms, inattention, hyperactivity/impulsivity)

**Figure S2.** Forest plot of meta-analysis of divorce and attention-deficit/hyperactivity disorder (ADHD) overall\* based on studies reporting continuous outcomes



\*Overall includes studies reporting on any included ADHD outcomes (diagnosis, ADHD symptoms, inattention, hyperactivity/impulsivity)

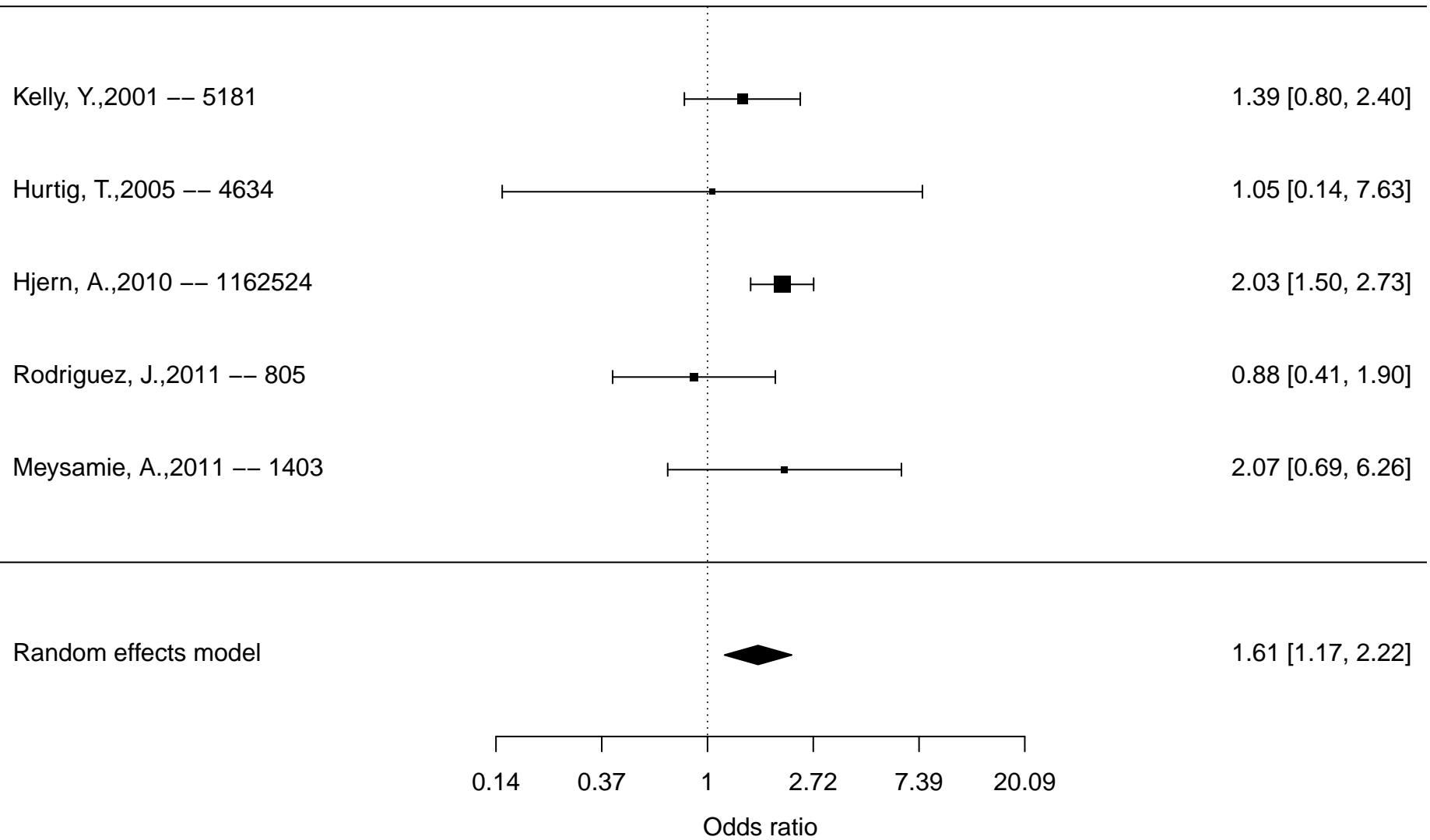
**Figure S3.** Forest plot of meta-analysis of divorce and attention-deficit/hyperactivity disorder (ADHD) diagnosis based on studies reporting dichotomous outcomes



**Figure S4.** Forest plot of meta-analysis of single parenting and attention-deficit/hyperactivity disorder (ADHD) overall\* based on studies reporting dichotomous outcomes

**Study, Year -- Sample size**

**Odds ratio [95% confidence interval]**

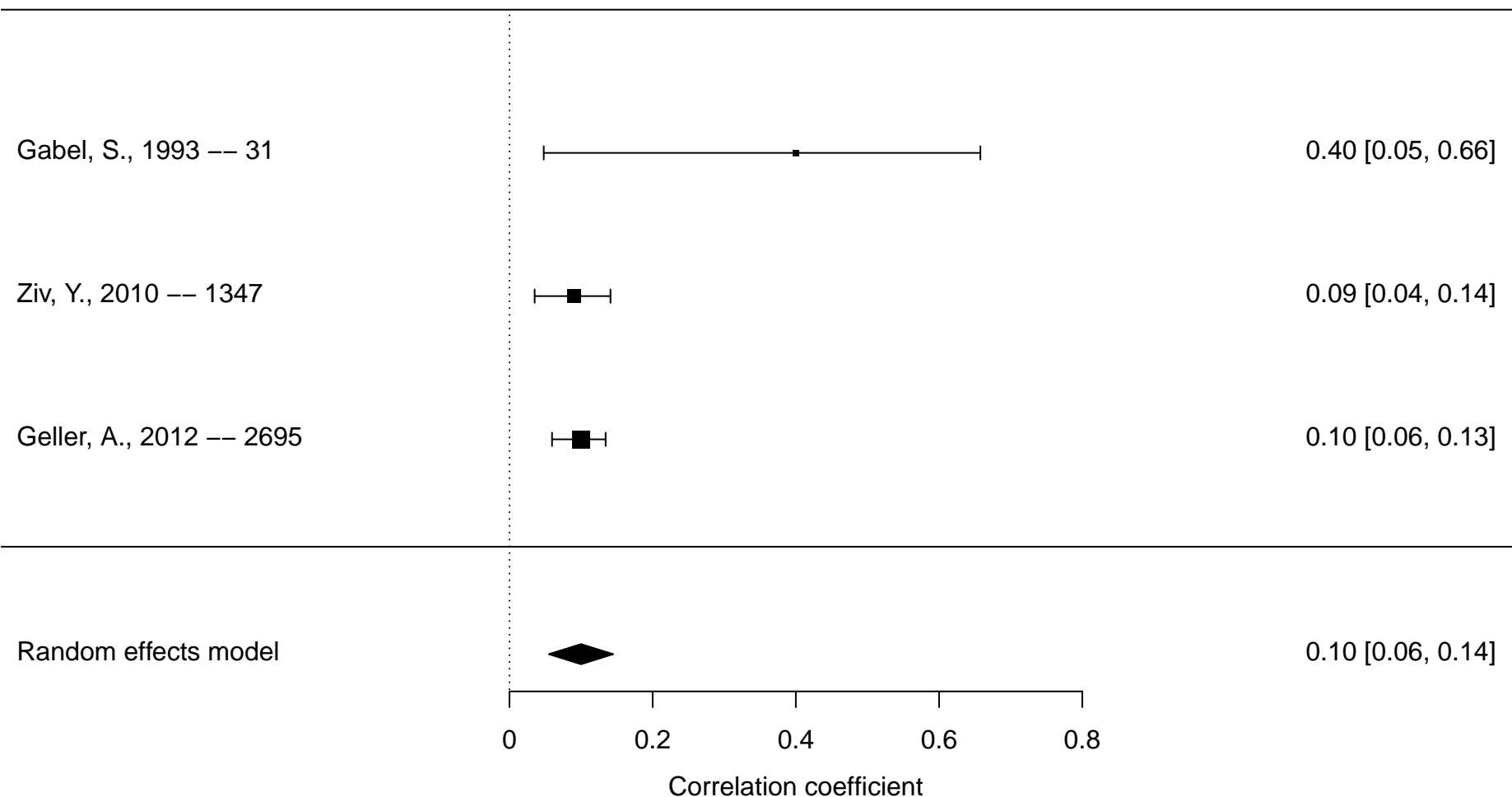


\*Overall includes studies reporting on any included ADHD outcomes (diagnosis, ADHD symptoms, inattention, hyperactivity/impulsivity)

**Figure S5.** Forest plot of meta-analysis of parental incarceration/arrest and attention-deficit/hyperactivity disorder (ADHD) overall\* based on studies reporting continuous outcomes

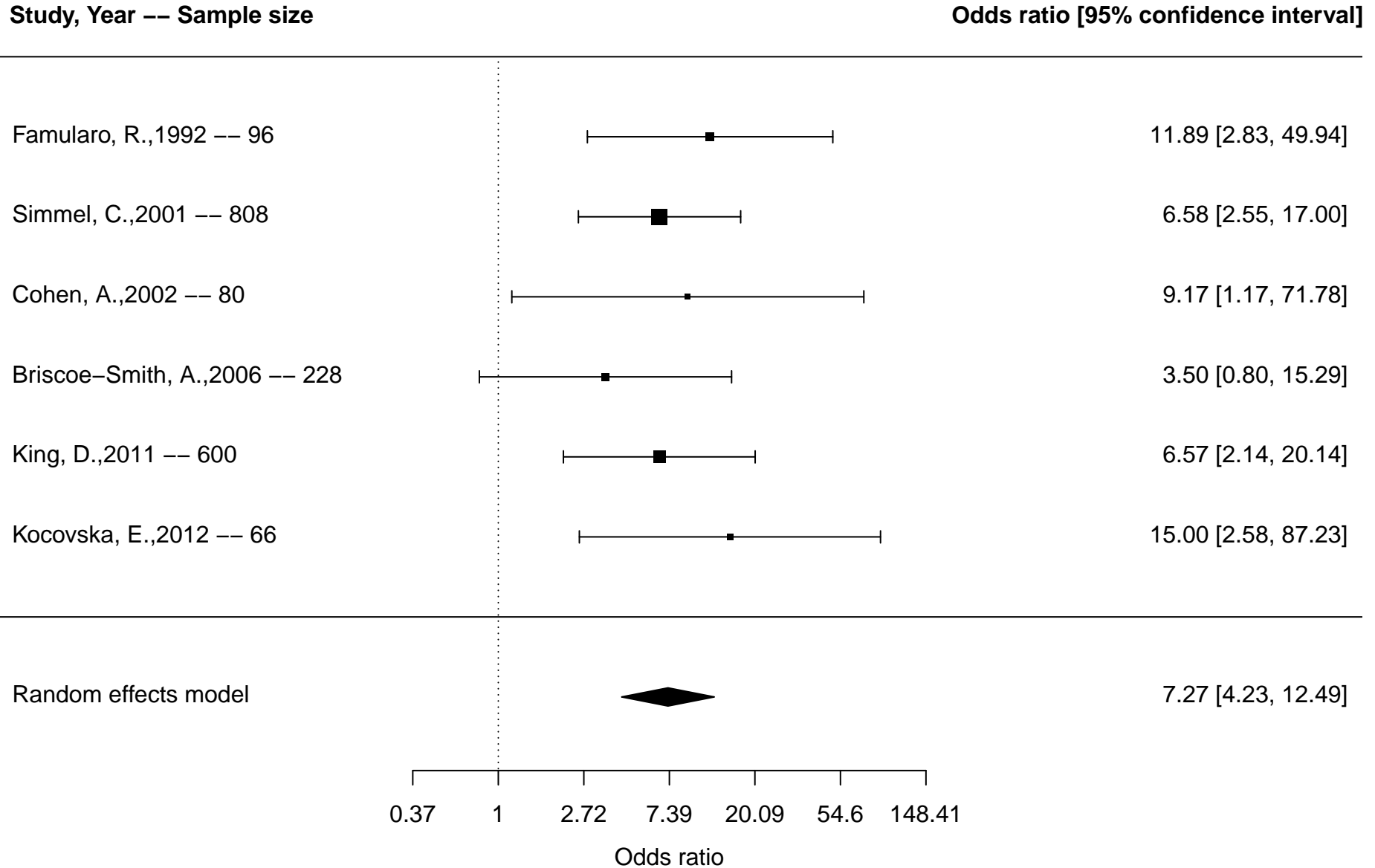
**Study, Year -- Sample size**

**Correlation coefficient [95% confidence interval]**



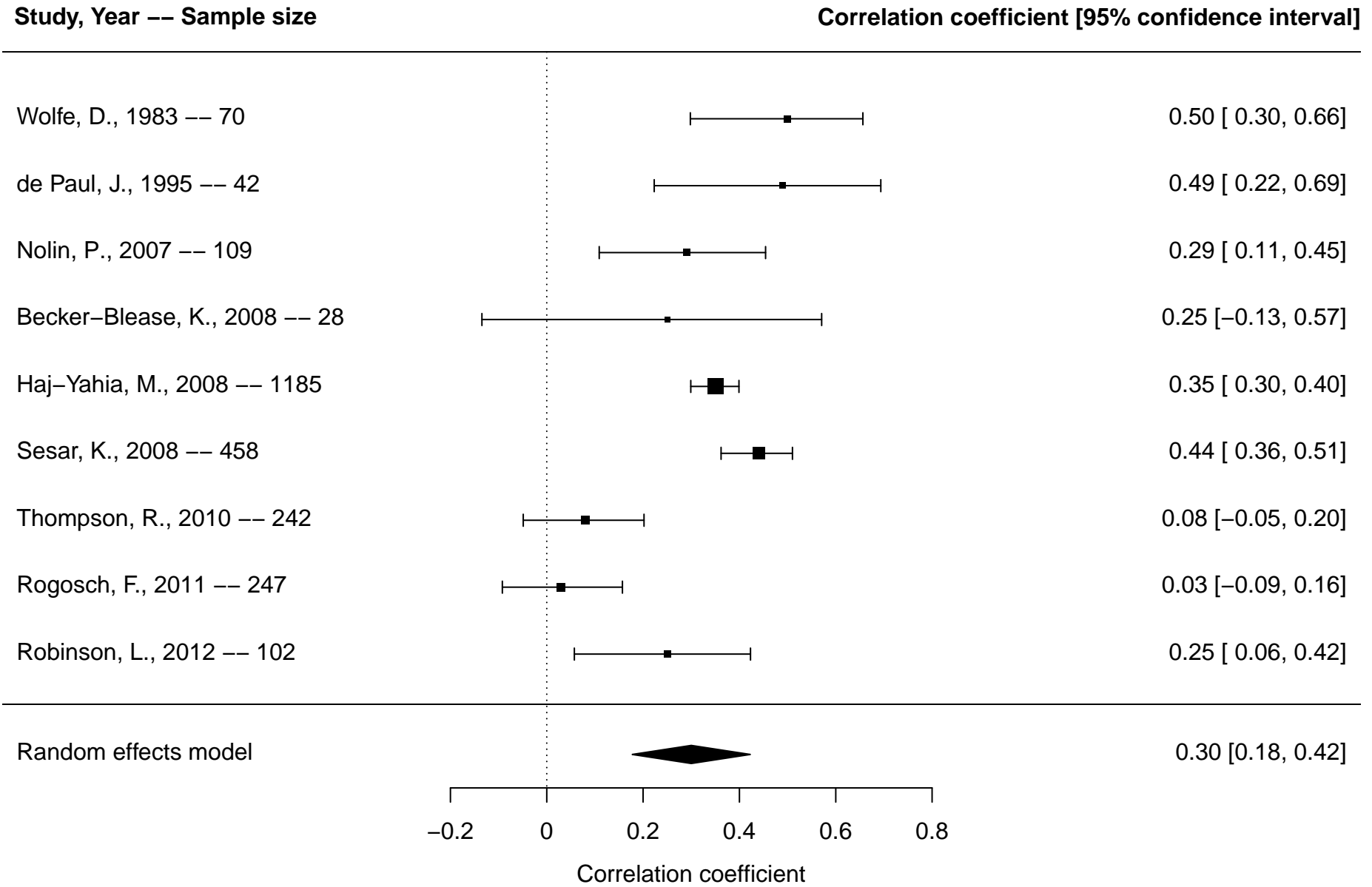
\*Overall includes studies reporting on any included ADHD outcomes (diagnosis, ADHD symptoms, inattention, hyperactivity/impulsivity)

**Figure S6.** Forest plot of meta-analysis of general maltreatment and attention-deficit/hyperactivity disorder (ADHD) overall\* based on studies reporting dichotomous outcomes



\*Overall includes studies reporting on any included ADHD outcomes (diagnosis, ADHD symptoms, inattention, hyperactivity/impulsivity)

**Figure S7.** Forest plot of meta-analysis of general maltreatment and attention-deficit/hyperactivity disorder (ADHD) overall\* based on studies reporting continuous outcomes



\*Overall includes studies reporting on any included ADHD outcomes (diagnosis, ADHD symptoms, inattention, hyperactivity/impulsivity)



**Figure S8.** Forest plot of meta-analysis of general maltreatment and attention-deficit/hyperactivity disorder (ADHD) diagnosis based on studies reporting dichotomous outcomes

**Study, Year -- Sample size**

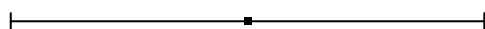
**Odds ratio [95% confidence interval]**

Famularo, R.,1992 -- 96



11.89 [2.83, 49.94]

Cohen, A.,2002 -- 80



9.17 [1.17, 71.78]

Briscoe-Smith, A.,2006 -- 228



3.50 [0.80, 15.29]

King, D.,2011 -- 600



6.57 [2.14, 20.14]

Kocovska, E.,2012 -- 66

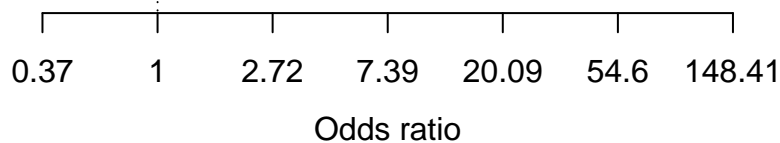


15.00 [2.58, 87.23]

Random effects model



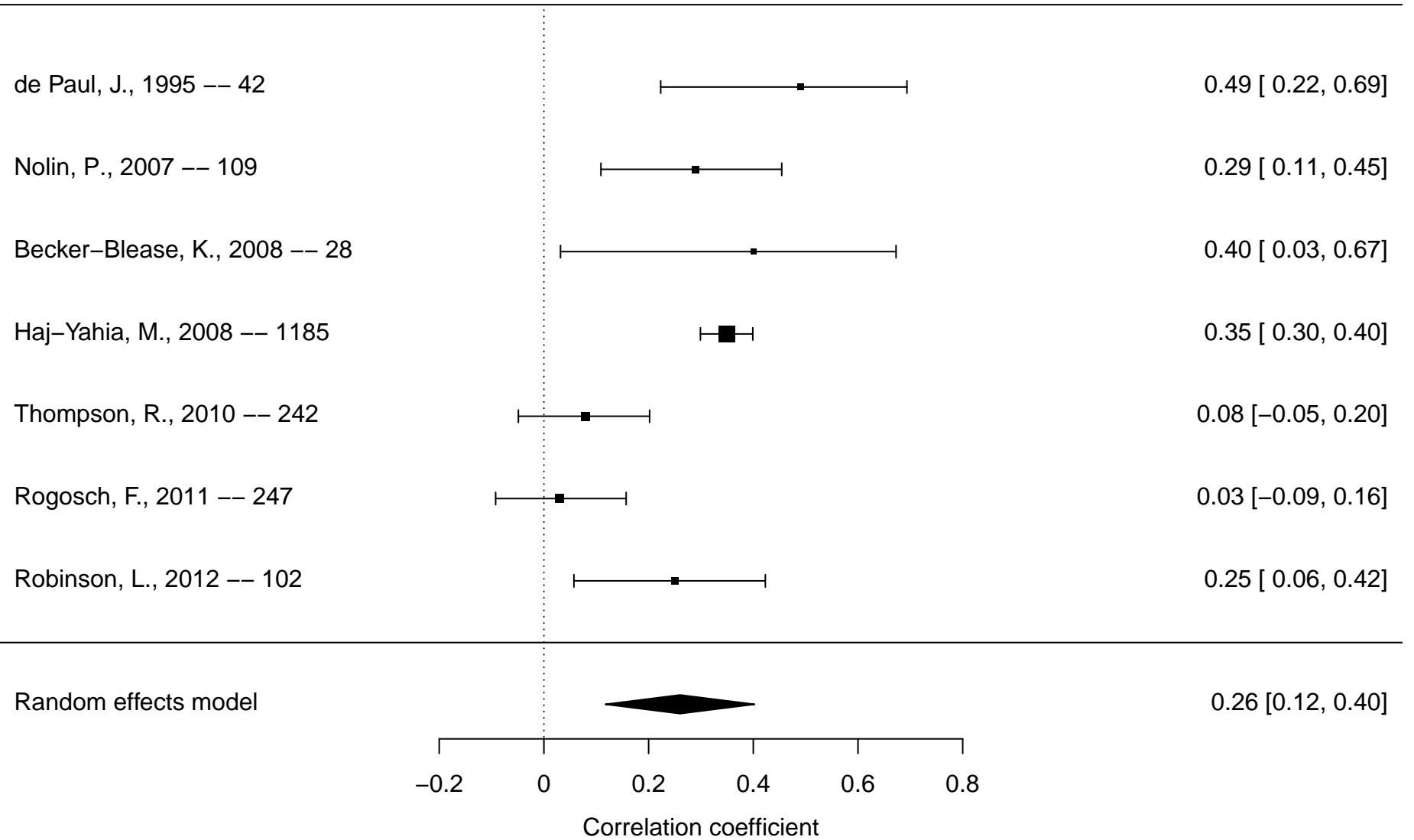
7.63 [3.95, 14.75]



**Figure S9.** Forest plot of meta-analysis of general maltreatment and inattention based on studies reporting continuous outcomes

**Study, Year -- Sample size**

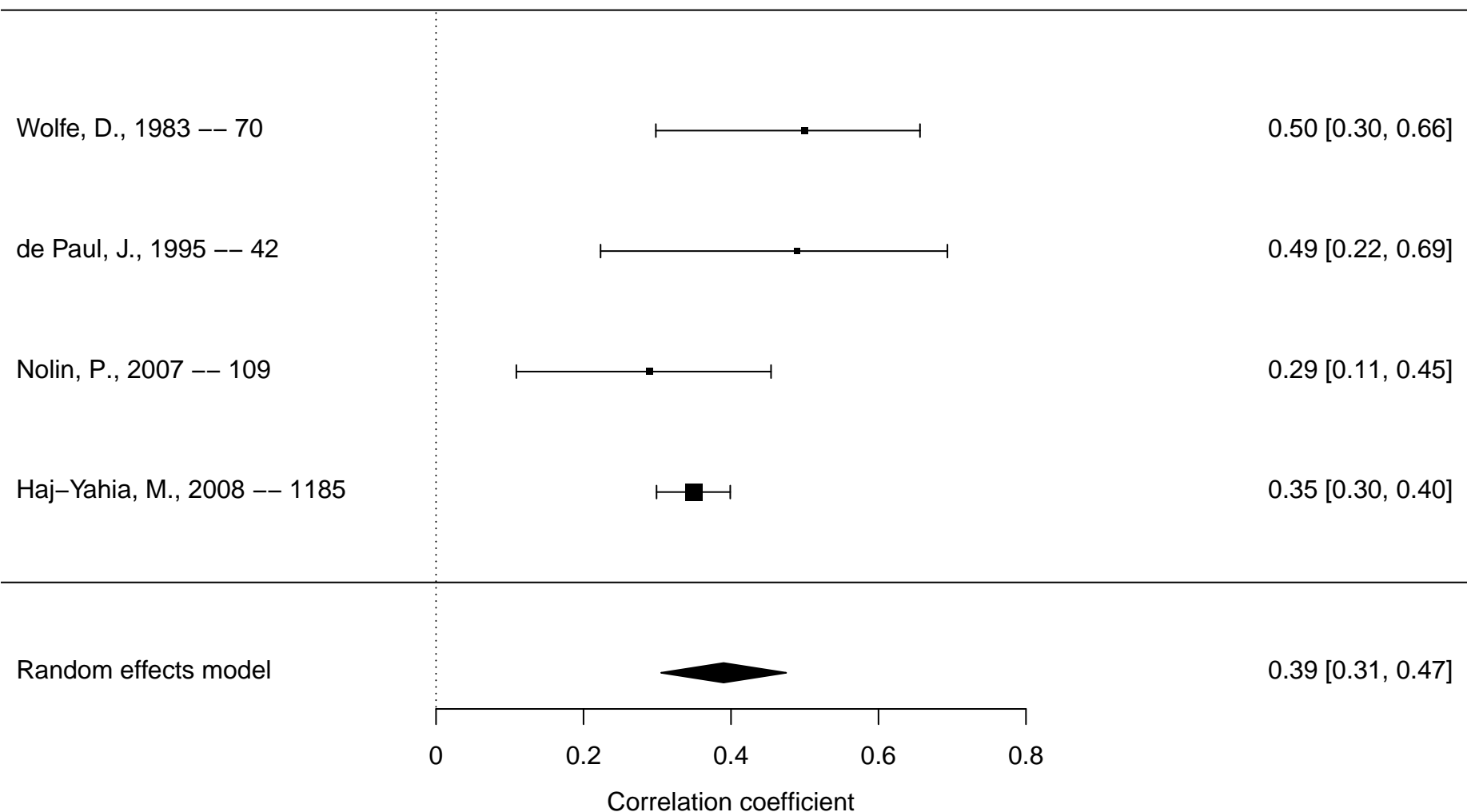
**Correlation coefficient [95% confidence interval]**



**Figure S10.** Forest plot of meta-analysis of physical abuse and attention-deficit/hyperactivity disorder (ADHD) overall\* based on studies reporting continuous outcomes

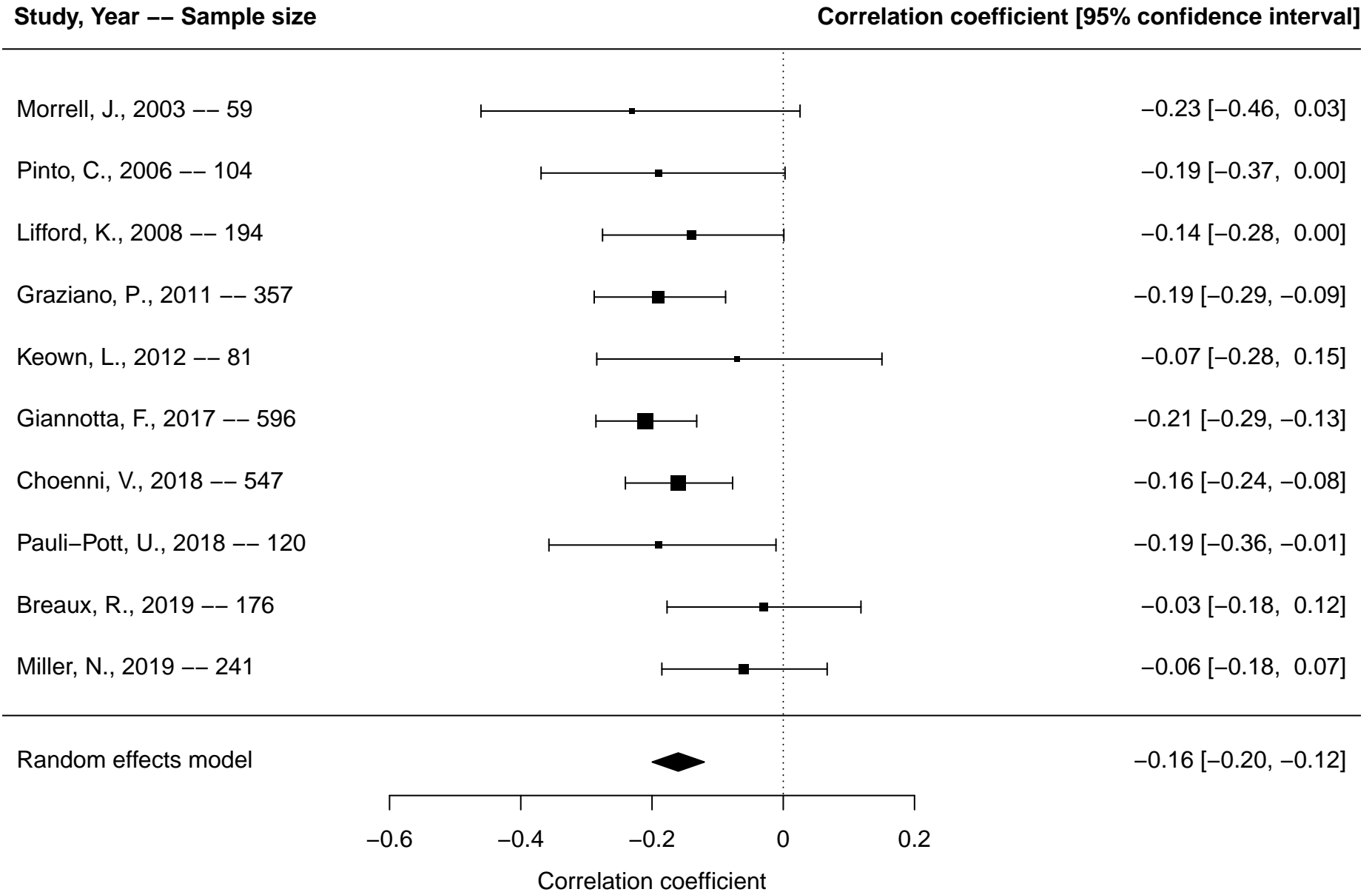
**Study, Year -- Sample size**

**Correlation coefficient [95% confidence interval]**



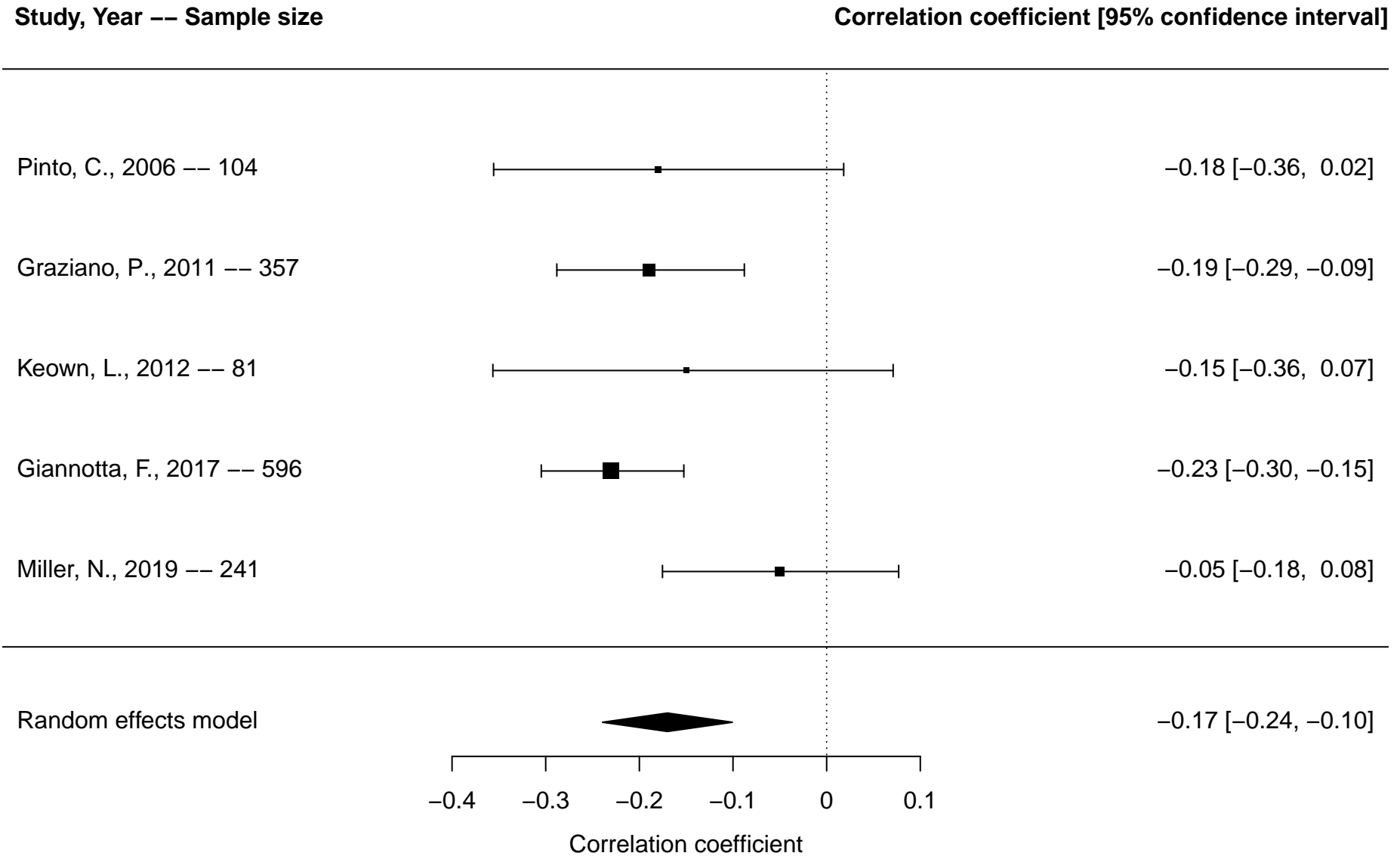
\*Overall includes studies reporting on any included ADHD outcomes (diagnosis, ADHD symptoms, inattention, hyperactivity/impulsivity)

**Figure S11.** Forest plot of meta-analysis of sensitivity/warmth and attention-deficit/hyperactivity disorder (ADHD) overall\* based on studies reporting continuous outcomes



\*Overall includes studies reporting on any included ADHD outcomes (diagnosis, ADHD symptoms, inattention, hyperactivity/impulsivity)

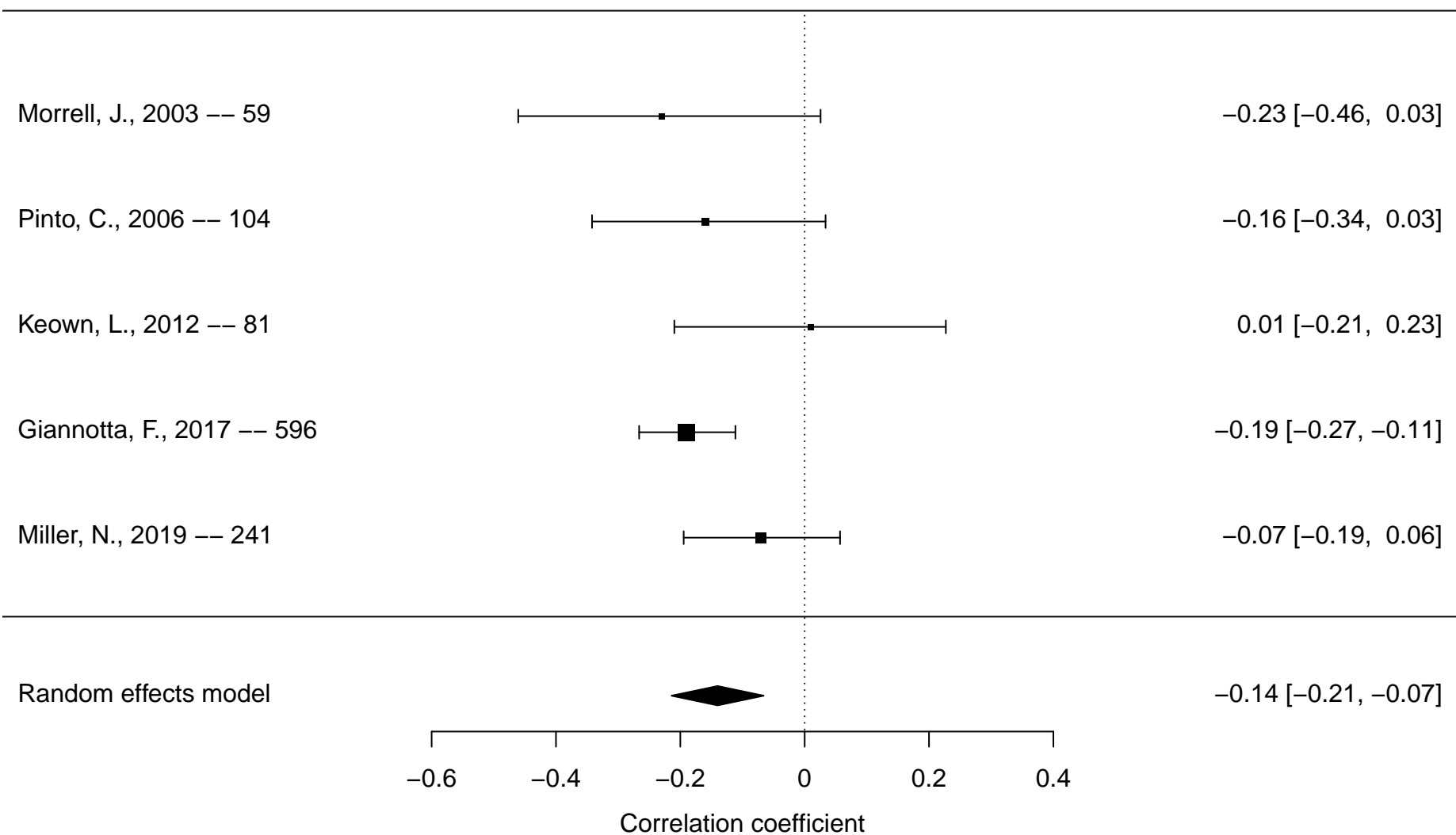
**Figure S12.** Forest plot of meta-analysis of sensitivity/warmth and inattention based on studies reporting continuous outcomes



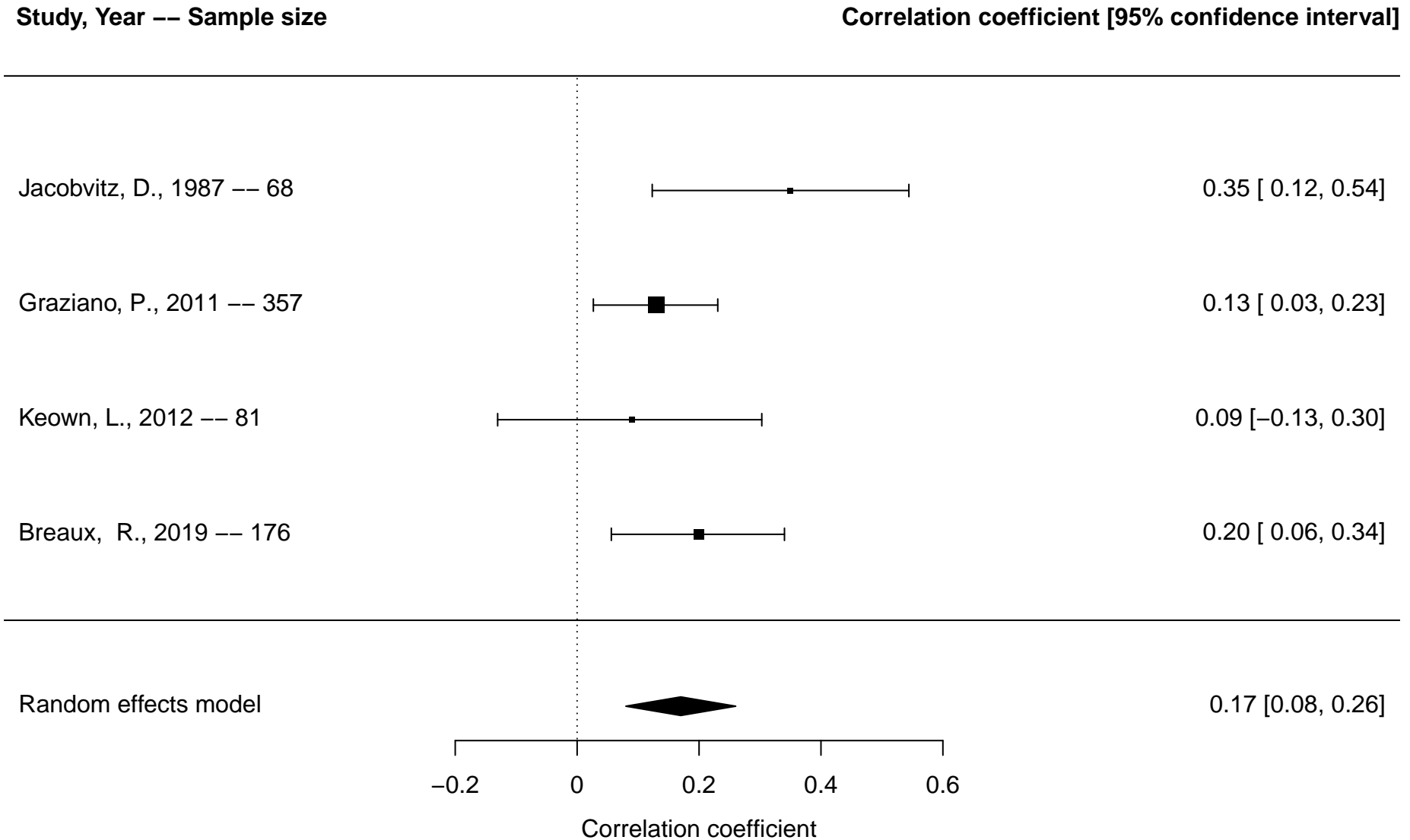
**Figure S13.** Forest plot of meta-analysis of sensitivity/warmth and hyperactivity/impulsivity based on studies reporting continuous outcomes

**Study, Year -- Sample size**

**Correlation coefficient [95% confidence interval]**



**Figure S14.** Forest plot of meta-analysis of intrusiveness/reactivity and attention-deficit/hyperactivity disorder (ADHD) overall\* based on studies reporting continuous outcomes

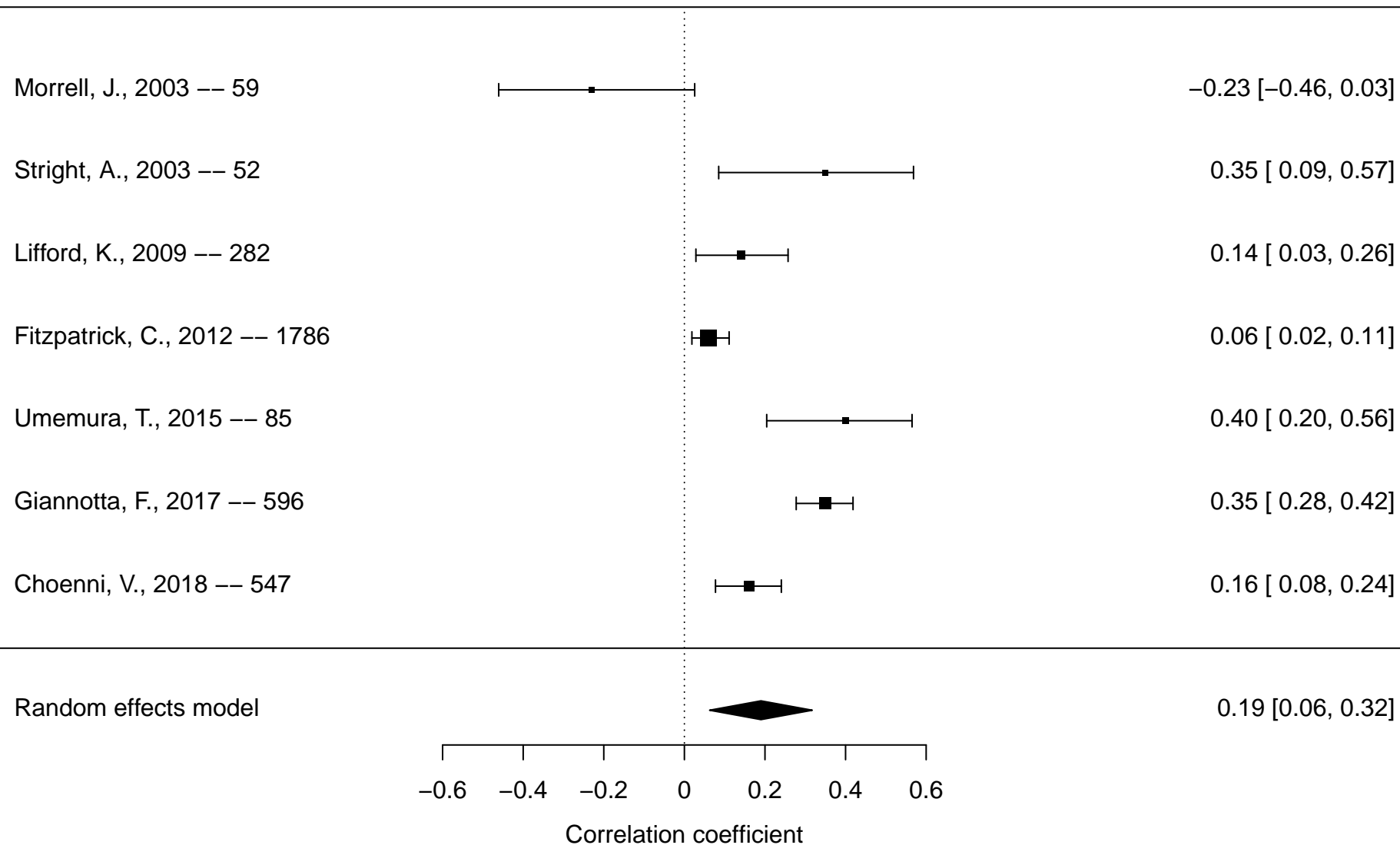


\*Overall includes studies reporting on any included ADHD outcomes (diagnosis, ADHD symptoms, inattention, hyperactivity/impulsivity)

**Figure S15.** Forest plot of meta-analysis of negative/harsh discipline and attention-deficit/hyperactivity disorder (ADHD) overall\* based on studies reporting continuous outcomes

**Study, Year -- Sample size**

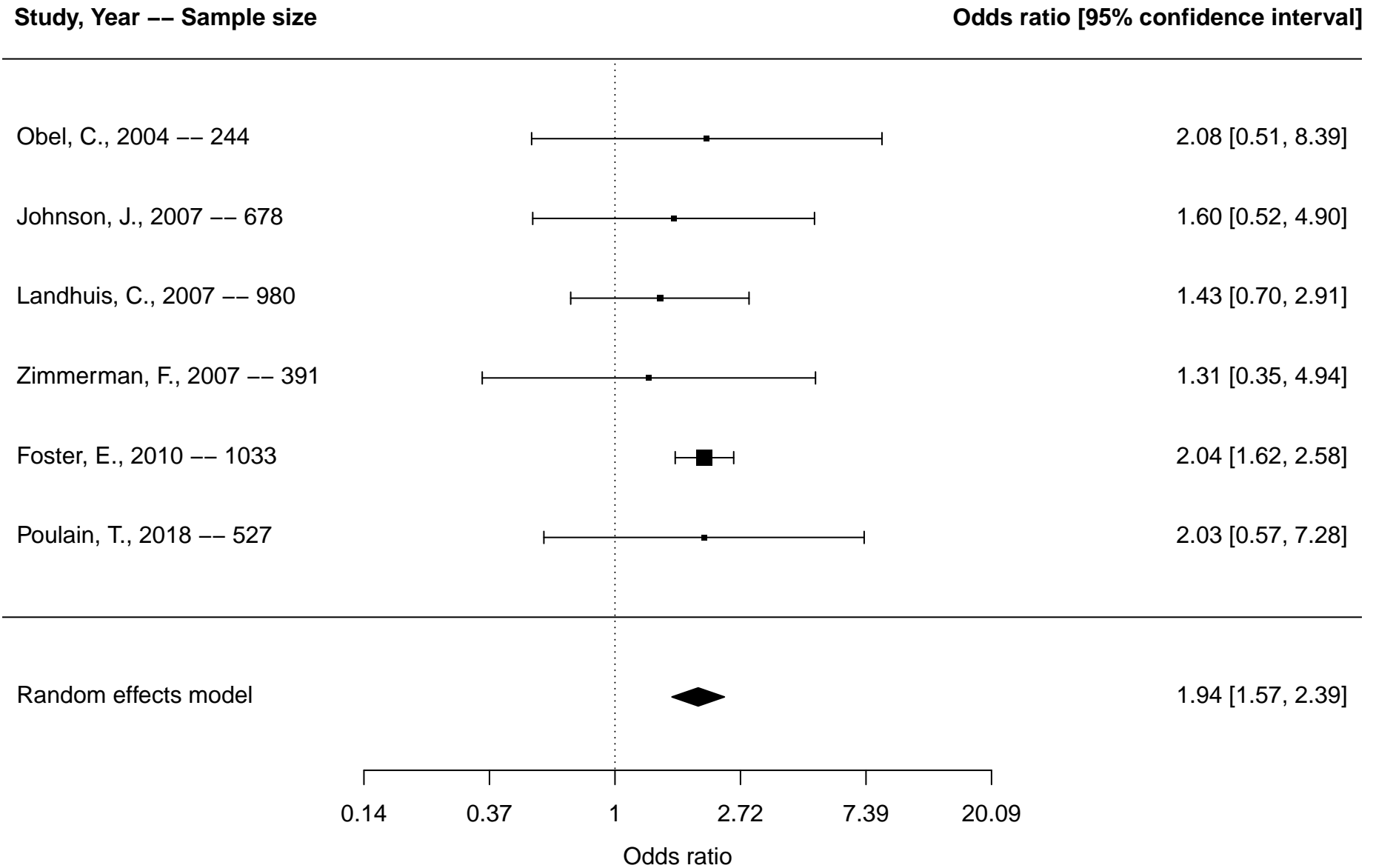
**Correlation coefficient [95% confidence interval]**



\*Overall includes studies reporting on any included ADHD outcomes (diagnosis, ADHD symptoms, inattention, hyperactivity/impulsivity)

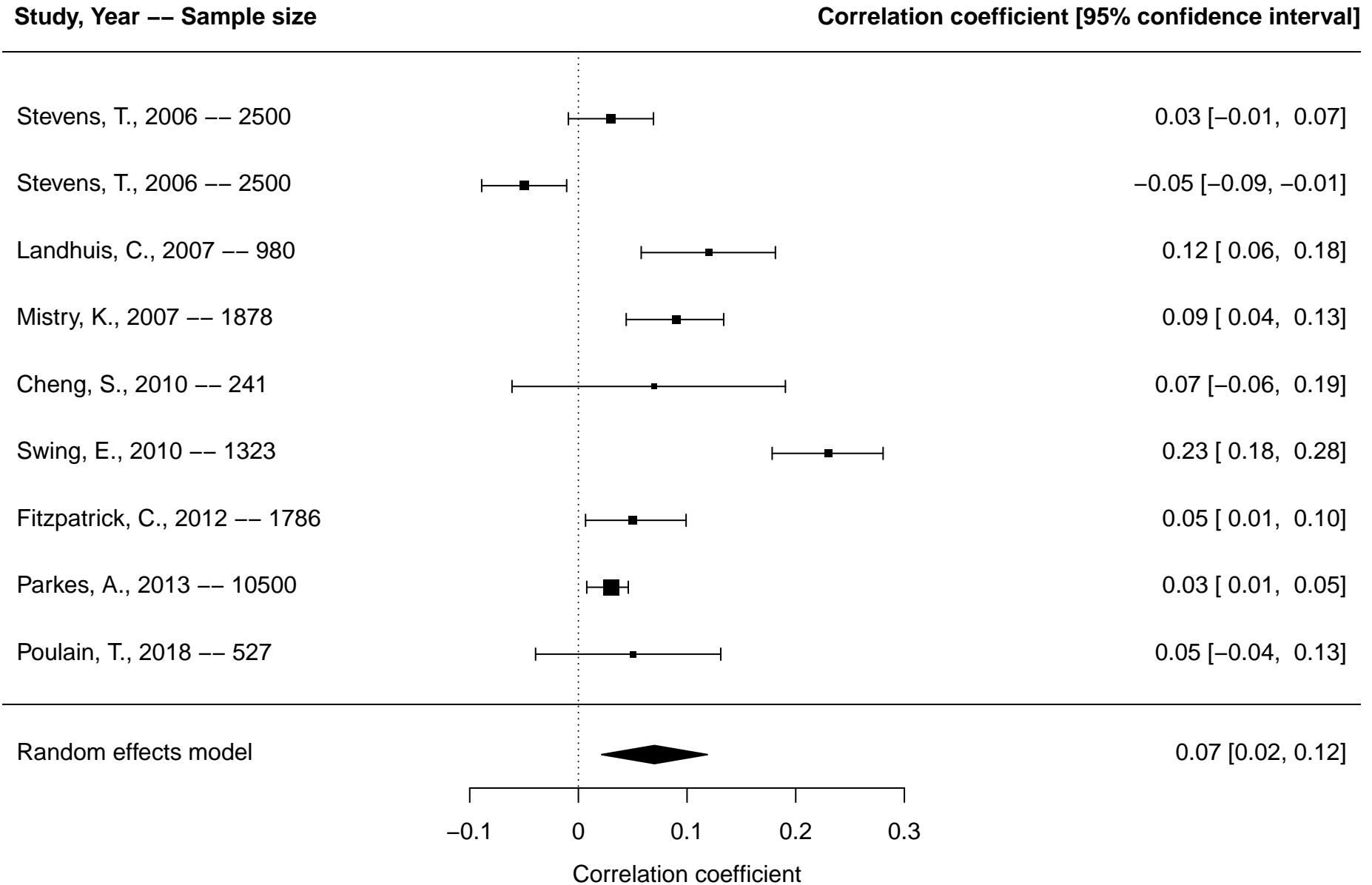


**Figure S16.** Forest plot of meta-analysis of media exposure and attention-deficit/hyperactivity disorder (ADHD) overall\* based on studies reporting dichotomous outcomes



\*Overall includes studies reporting on any included ADHD outcomes (diagnosis, ADHD symptoms, inattention, hyperactivity/impulsivity)

**Figure S17.** Forest plot of meta-analysis of media exposure and attention-deficit/hyperactivity disorder (ADHD) overall\* based on studies reporting continuous outcomes

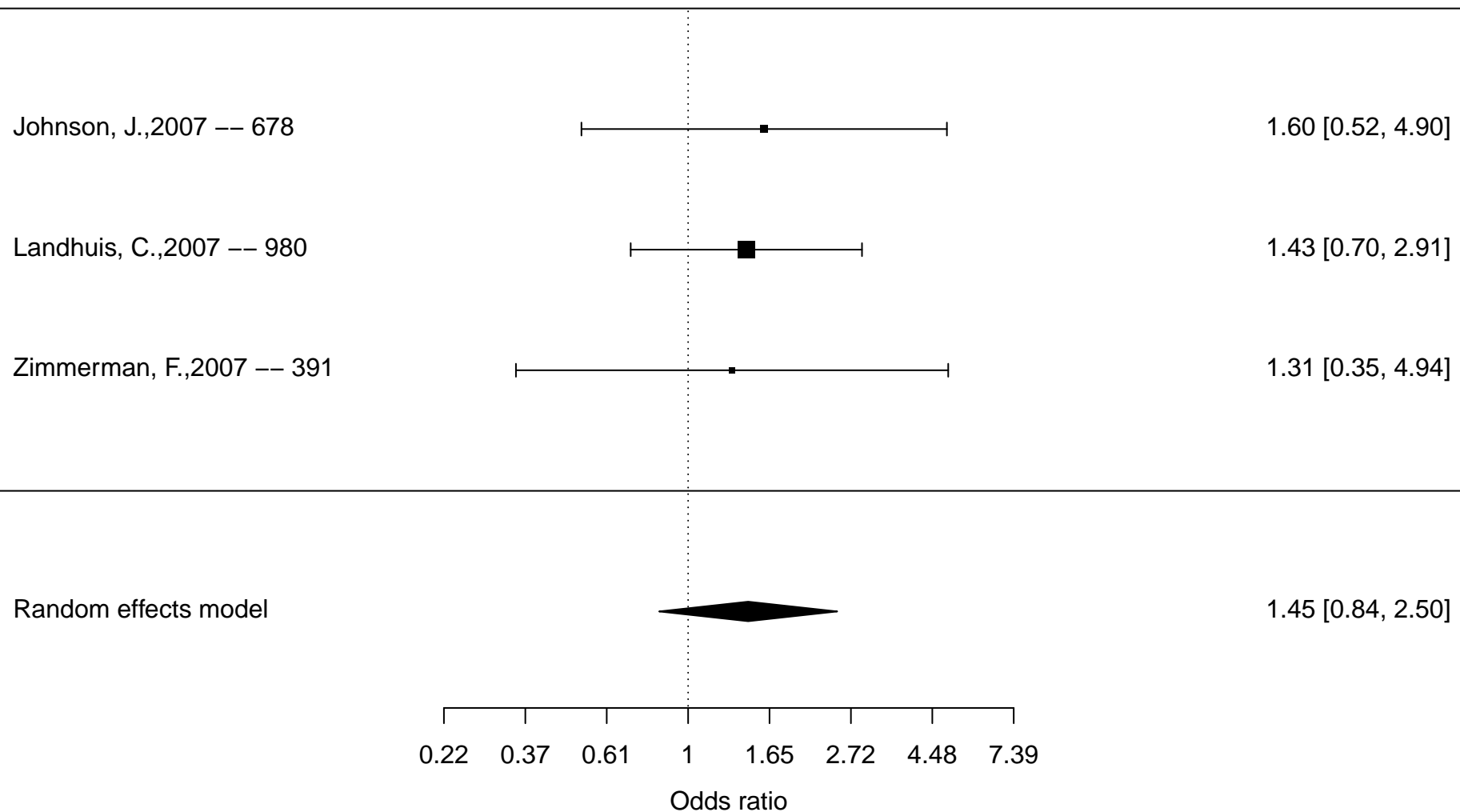


\*Overall includes studies reporting on any included ADHD outcomes (diagnosis, ADHD symptoms, inattention, hyperactivity/impulsivity)

**Figure S18.** Forest plot of meta-analysis of media exposure and inattention based on studies reporting dichotomous outcomes

**Study, Year -- Sample size**

**Odds ratio [95% confidence interval]**



**Figure S19.** Forest plot of meta-analysis of media exposure and inattention based on studies reporting continuous outcomes

**Study, Year -- Sample size**

**Correlation coefficient [95% confidence interval]**

