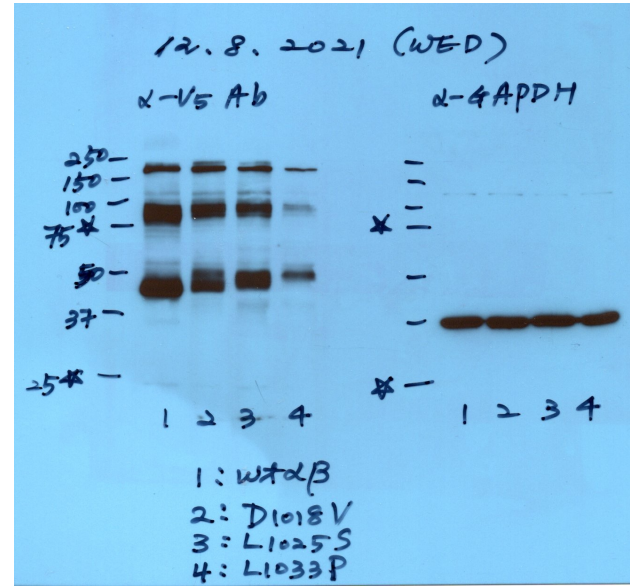
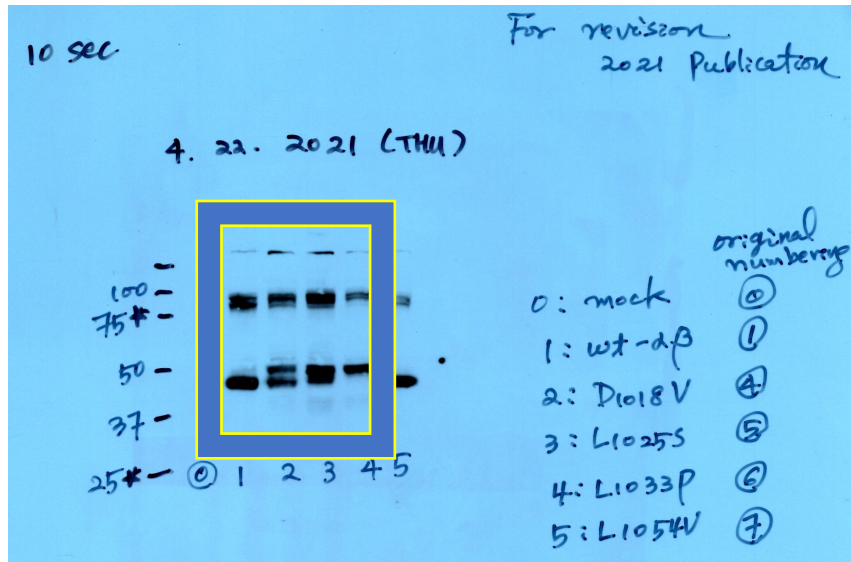
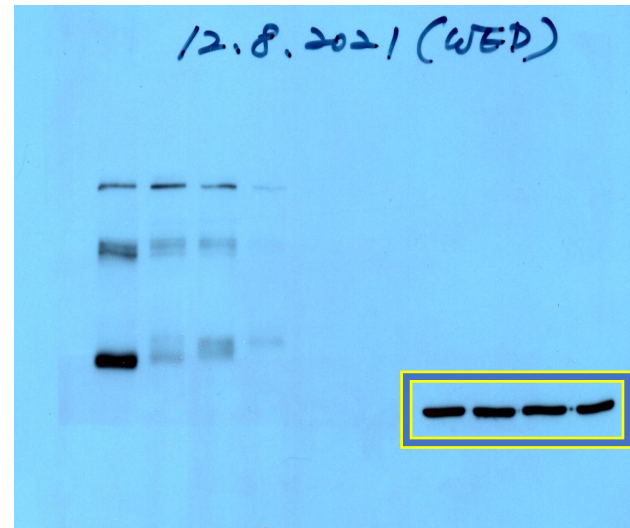


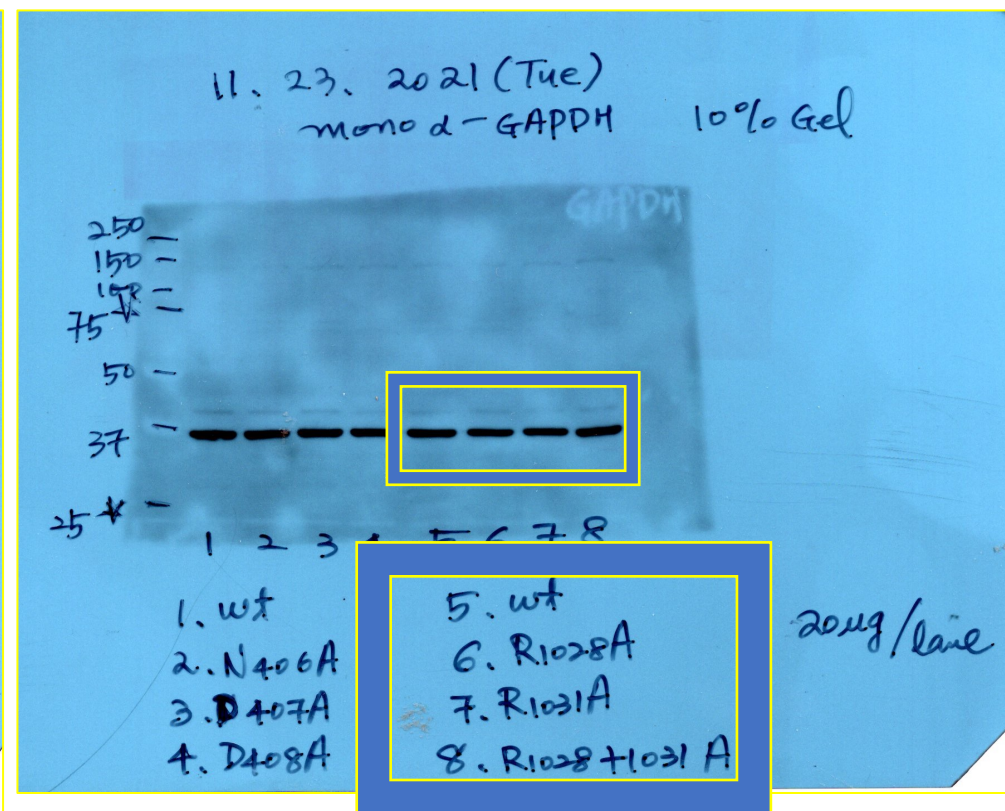
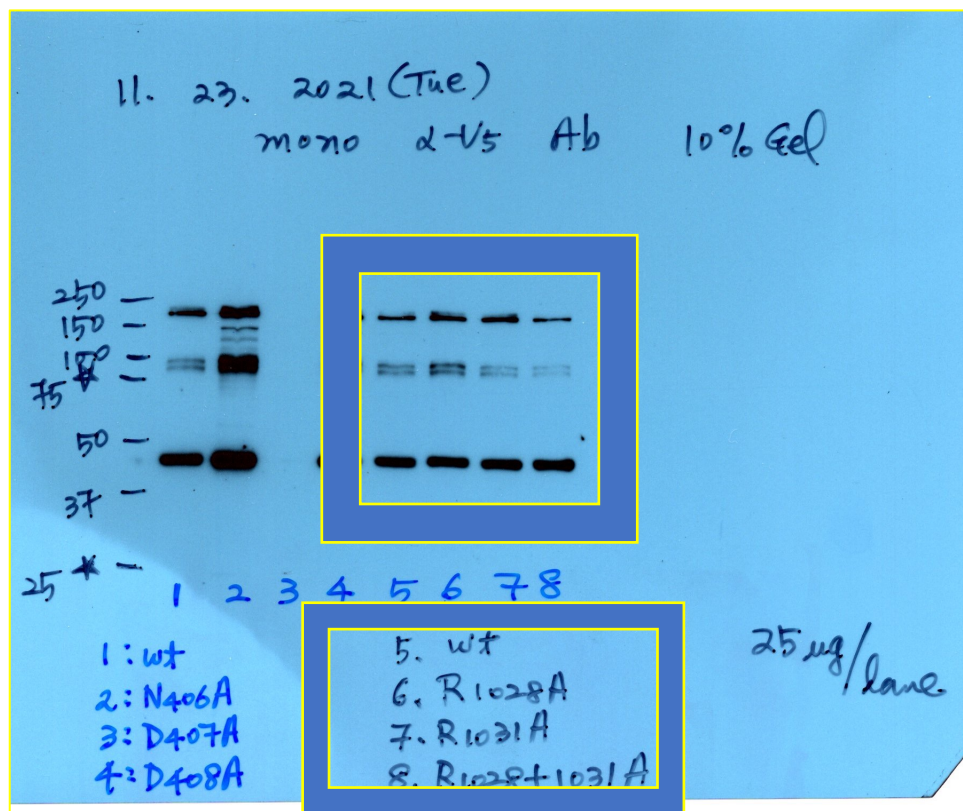
Extended Data Fig. 6 a



For the GAPDH western blot on 12.8.2021, I used 4.22.2021 cell lysates.



Extended Data Fig. 6 c



Extended Data Fig. 6 d

	11.19.2021	12.02.2021	12.06.2021	AVE	STDEV
wt	0.43	0.56	0.44	0.47666667	0.07234178
R1028A	0.29	0.41	0.4	0.36666667	0.06658328
R1031A	0.37	0.36	0.39	0.37333333	0.01527525
R1028+1031A	0.21	0.25	0.31	0.25666667	0.05033223

HeLa-/-					
		11.19.2021		75ug used	2 hrs
		cpm			
mock		6226			pmol/ug/hr
wt		13894	-6226	7668	0.43
R1028A		11295	-6226	5069	0.29
R1031A		12854	-6226	6628	0.37
R1028+1031A		9906	-6226	3680	0.21
		12.02.2021		50ug used	3 hrs
		cpm			
mock		6515			pmol/ug/hr
wt		16535	-6515	10020	0.56
R1028A		13785	-6515	7270	0.41
R1031A		12814	-6515	6299	0.36
R1028+1031A		11018	-6515	4503	0.25
		12.06.2021		75ug used	2.5 hrs
		cpm			
mock		6515			pmol/ug/hr
wt		16215	-6515	9700	0.44
R1028A		15352	-6515	8837	0.4
R1031A		15103	-6515	8588	0.39
R1028+1031A		13334	-6515	6819	0.31

For the mock control value on 12.02.2021 & 12.06.2021,

I used average value of 6515 cpm from 3 exp results
(7209, 6110, 6226 cpm)