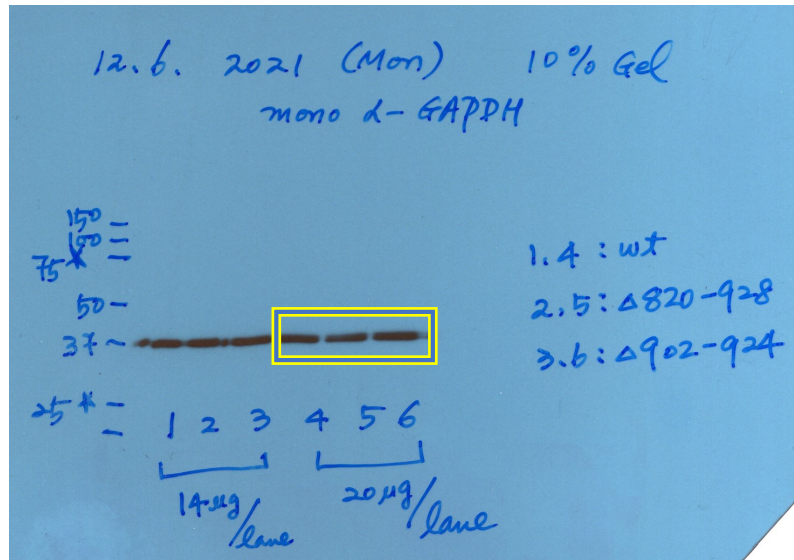
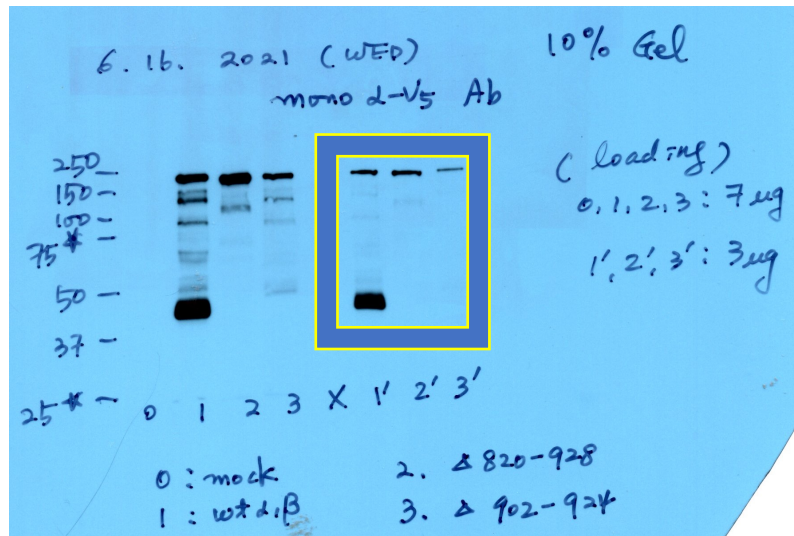


Fig. 3e



For the GAPDH western blot on 12.6.2021, I used 6.16.2021 cell lysates.

	6.21.2021		(50ug Used)	1 hr		
	cpm				pmol/ug/hr	
Mock	3677					
Wt	108171	-3677	104494		17.71	
delS3	252712	-3677	249035		42.21	
	6.24.2021		(50ug Used)	1 hr		
	cpm				pmol/ug/hr	
Mock	3382					
Wt	107973	-3382	104591		17.73	
delS3	279078	-3382	275696		46.73	
	7.23.2021		(50ug Used)	1 hr		
	cpm				pmol/ug/hr	
Mock	2875	-2873.86				
Wt	107578	-2875	104703		17.75	
delS3	321419	-2875	318544		53.99	
d902-924	9595	-2875	6720		1.14	
	8.4.2021	cpm	(50ug Used)	1 hr		
Mock		3237				pmol/ug/hr
Wt			124756	-3237	121519	20.6
d902-924		1st	8800	-3237	5563	0.94
d902-924		2nd	5255	-3237	2018	0.34
d902-924		3rd	4389	-3237	1152	0.2

			293 cells				
		Date	6.21.	6.24	7.23.	Ave	StdDev
	pmol/ug/hr	Wt	17.71	17.73	17.75	17.73	0.02
delS3	pmol/ug/hr	del S3	42.21	46.73	54	47.6466667	5.948

	7.23.2021	8.4.2021	8.4.2021	8.4.2021		Ave	Stdev
del902-924	1.14	0.94	0.34	0.2		0.655	0.45559485