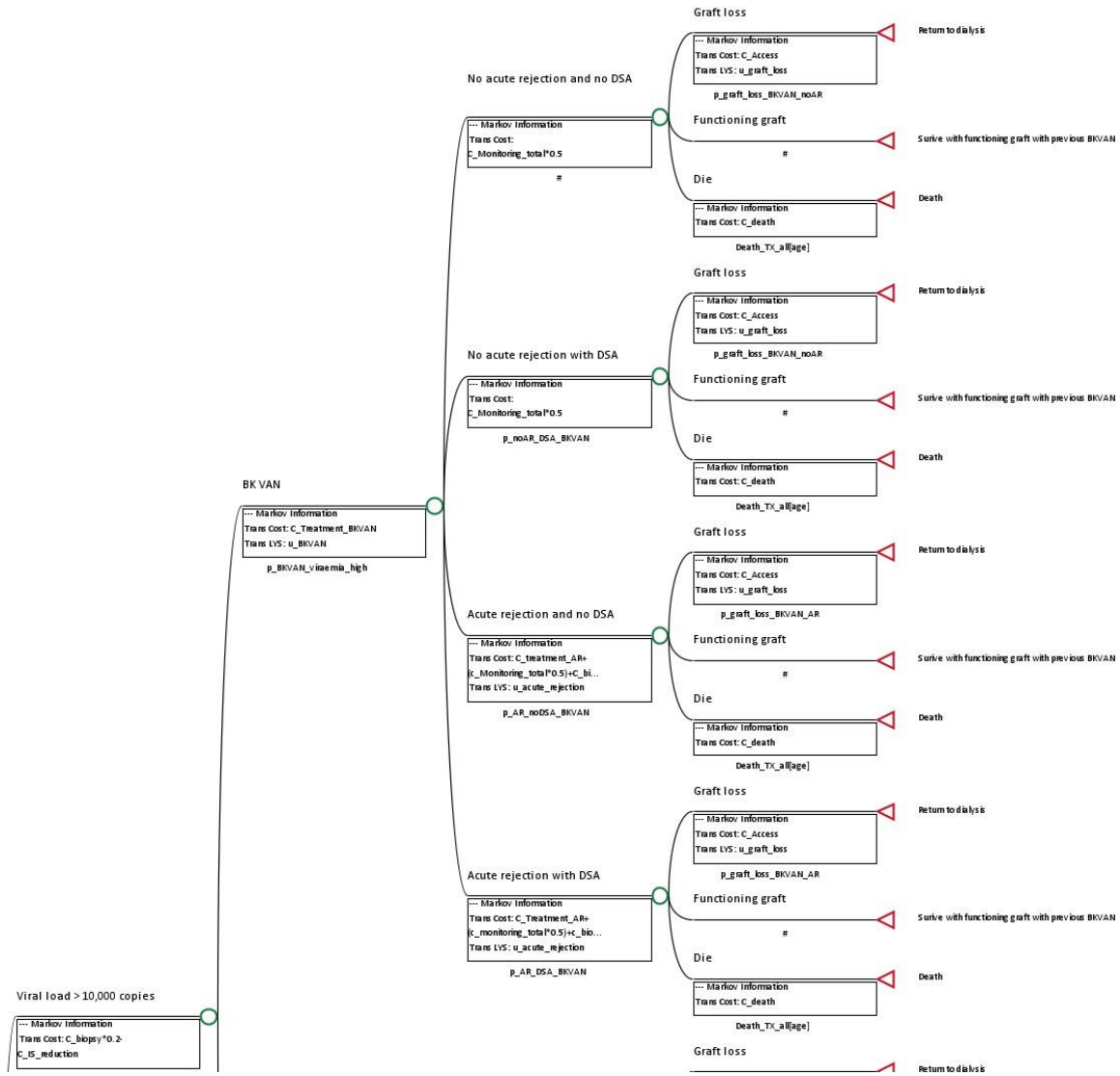


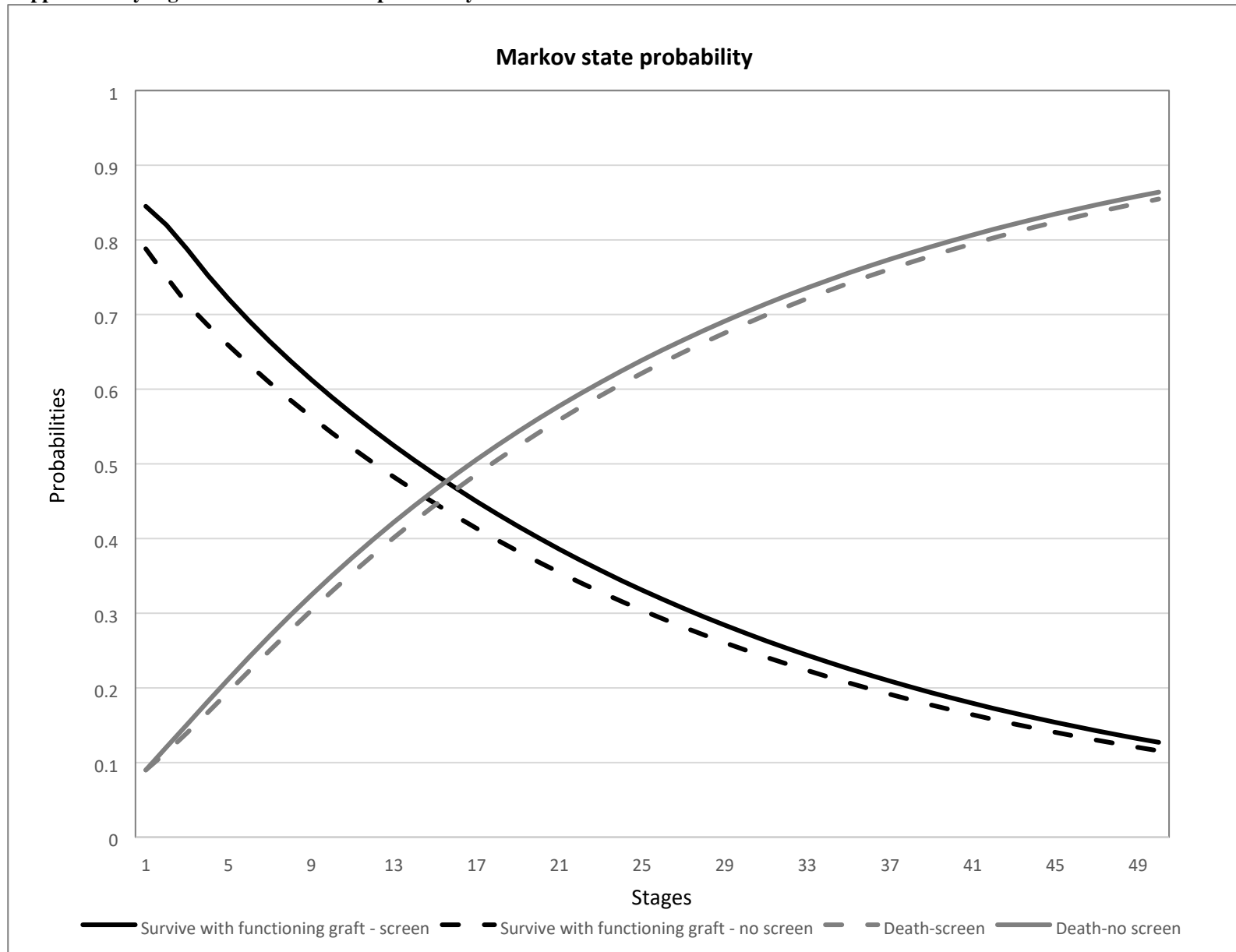
Supplementary Table S1: Electronic search strategies used to identify studies

MEDLINE Search	
1	Kidney Transplantation/
2	((kidney or renal) adj3 (transplant* or graG* or allograft*)).tw
3	Pancreas Transplantation/
4	(pancreas adj3 (transplant* or graG* or allograft)).tw.
5	or/1-4
6	Polyomavirus/
7	Polyomavirus Infections/
8	BK Virus/
9	JC Virus/
10	((BK or JC) adj (nephropathy or polyoma*)).tw.
11	((BK or JC) adj (virus or viral or vir?emia or viruira)).tw.
12	polyomavirus-associated nephropathy.tw.
13	BKVAN.tw. 14 PVAN.tw.
15	BKPyV.tw.
16	PyVAN.tw.
17	BKPyVAN.tw.
18	or/6-17
19	and/5,18
EMBASE Search	
1	exp kidney transplantation/
2	((kidney or renal) adj3 (transplant* or graft* or allograft*)).tw.
3	pancreas transplantation/
4	(pancreas adj3 (transplant* or graft* or allograft)).tw.
5	or/1-4
6	polyomavirus/
7	polyomavirus infection/
8	exp polyomavirus associated nephropathy/
9	BK virus/ 10 JC virus/
11	((BK or JC) adj (nephropathy or polyoma*)).tw.
12	((BK or JC) adj (virus or viral or vir?emia or viruira)).tw.
13	polyomavirus-associated nephropathy.tw.
14	BKVAN.tw. 15 PVAN.tw. 16 BKPyV.tw.
17	PyVAN.tw.
18	BKPyVAN.tw.
19	or/6-18
20	and/5,19

Supplementary Figure S1a. Model showing the transition states and Markov states of the screen arm



Supplementary Figure S2. Markov states probability



Supplementary Figure S3. Tornado diagram showing the influential variables on the incremental benefits of the base model

