

Table S1. List of primary and secondary antibodies used in this study.

Antibodies	Antigen	Clone	Species	Company	Cat. number	Dilution
Primary antibodies	UBE2T	4E5	mAb mouse	Santa Cruz Biotechnology	sc-100623	1:200
	E-cadherin	H-108	pAb rabbit	Santa Cruz Biotechnology	sc-7870	1:500
	β -catenin	E5	mAb mouse	Santa Cruz Biotechnology	sc-7963	1:200
	Fibronectin	EP5	mAb mouse	Santa Cruz Biotechnology	sc-8422	1:500
	Slug	A7	mAb mouse	Santa Cruz Biotechnology	sc-166476	1:200
	α -tubulin	B7	mAb mouse	Santa Cruz Biotechnology	sc-5286	1:500
	AKT	C67E7	mAb rabbit	Cell Signaling	4691	1:1000
	p-AKT (T308)	D25E6	mAb rabbit	Cell Signaling	13038	1:500
	p-AKT (S473)	D9E	mAb rabbit	Cell Signaling	4060	1:500
	mTOR	7C10	mAb rabbit	Cell Signaling	2983	1:1000
	pmTOR (S2448)		pAb rabbit	Cell Signaling	2971	1:500
	c-MYC	9E10	mAb mouse	Santa Cruz Biotechnology	sc-40	1:200
	Pan Ras	C-4	mAb mouse	Santa Cruz Biotechnology	sc-166691	1:200
	Raf-1	C-12	pAb rabbit	Santa Cruz Biotechnology	sc-133	1:200
	p-Raf-1/c-RAF (S259)		pAb rabbit	Cell Signaling	9421	1:500
	p-Raf-1/c-RAF (S338)	56A6	mAb rabbit	Cell Signaling	9427	1:500
	p-Raf-1 (S621)	E-1	mAb mouse	Santa Cruz Biotechnology	sc-271929	1:500

Table S1. List of primary and secondary antibodies used in this study.

Antibodies	Antigen	Clone	Species	Company	Cat. number	Dilution
Primary antibodies	MEK1/2		pAb rabbit	Cell Signaling	9122	1:1000
	p-MEK1/2 (S217/221)	41G9	mAb rabbit	Cell Signaling	9154	1:1000
	ERK1/2	C-9	mAb mouse	Santa Cruz Biotechnology	sc-514302	1:500
	p-ERK1/2 (Y204)	E-4	mAb mouse	Santa Cruz Biotechnology	sc-7383	1:500
	Bcl-2	C-2	mAb mouse	Santa Cruz biotechnology	sc-7382	1:100
	Bax	B-9	mAb mouse	Santa Cruz Biotechnology	sc-7480	1:200
	Elk-1	E-5	mAb mouse	Santa Cruz Biotechnology	sc-365876	1:100
	p-Elk-1	B-4	mAb mouse	Santa Cruz Biotechnology	sc-8406	1:100
	GAPDH	0411	mAb mouse	Santa Cruz Biotechnology	sc-47724	1:2000
	Histone H3	1G1	mAb mouse	Santa Cruz Biotechnology	sc-517576	1:10000
Secondary antibodies	anti-mouse HRP			Santa Cruz Biotechnology	sc-516102	1:3000
	anti-rabbit HRP		mouse	Santa Cruz Biotechnology	sc-2357	1:3000
	anti-rabbit Alexa Fluor 488		pAb goat	Invitrogen	A11008	1:500
	anti-mouse Alexa Fluor 555		pAb donkey	Invitrogen	A31570	1:500

Figure S1.

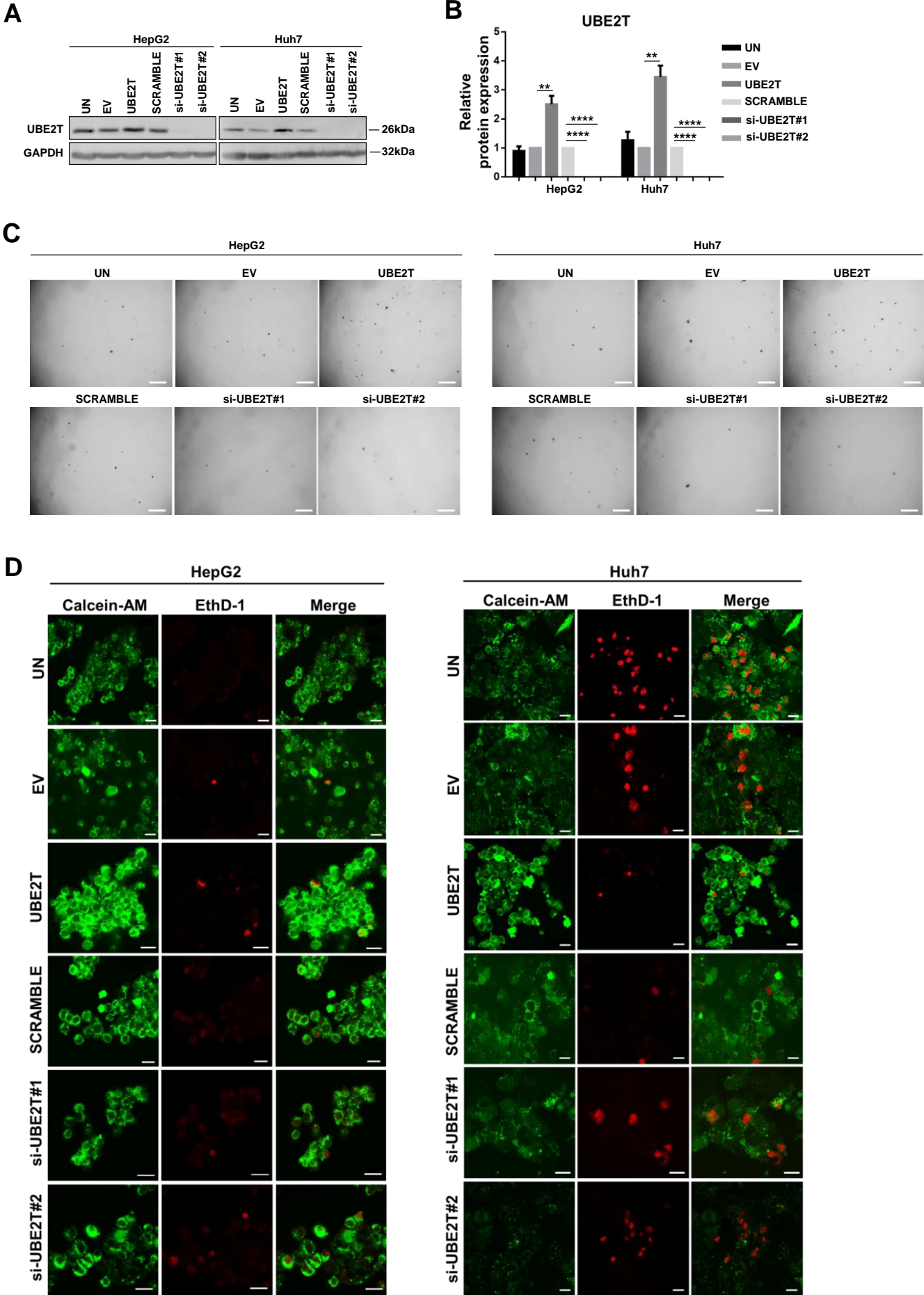
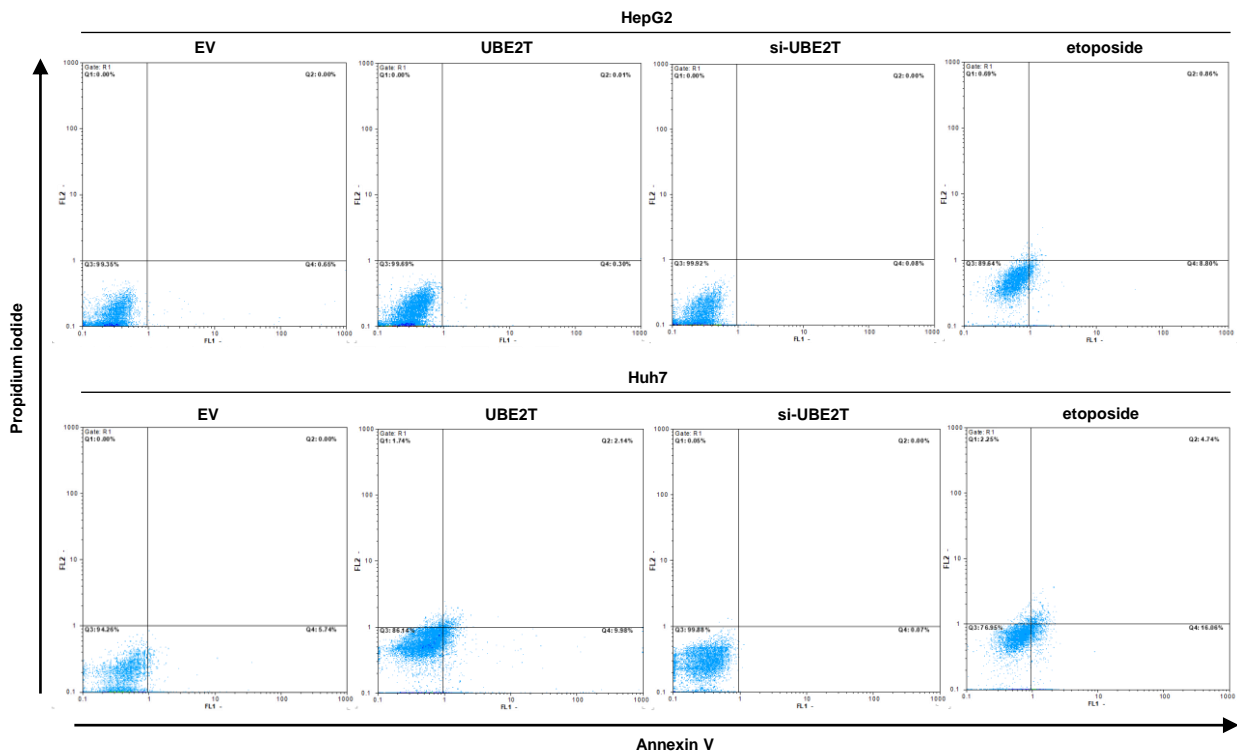


Figure S1.

E

Treatment Group (HepG2)/Cell cycle phases	SubG1	G0/G1	S	G2/M	Polyploid
UN	22.2±4.4	52.6±0.9	8.9±1.0	14.6±4.9	2.2±0.9
EV	22.4±0.2	52.0±0.2	8.7±0.6	14.7±1.0	1.9±0.6
UBE2T	9.9±3.8	44.0±4.2	3.5±1.1	27.7±3.5	16.3±4.0
SCRAMBLE	18.8±4.5	56.0±0.4	12.1±1.2	12.2±4.4	1.8±0.3
si-UBE2T#1	21.9±3.2	57.7±1.4	9.9±1.7	11.5±0.9	1.3±0.7
si-UBE2T#2	14.4±2.7	61.1±2.4	7.7±1.6	15.1±4.0	1.5±0.8
Treatment Group (Huh7)/Cell cycle phases	SubG1	G0/G1	S	G2/M	Polyploid
UN	8.1±1.8	47.5±3.2	14.6±2.3	19.5±3.1	10.3±2.4
EV	16.0±2.5	38.3±7.2	11.2±1.6	23.9±4.8	10.0±3.1
UBE2T	48.4±6.2	17.6±5.6	11.1±2.5	16.3±4.5	6.2±3.4
SCRAMBLE	15.9±3.9	42.7±4.1	9.1±1.4	20.4±5.6	11.2±3.4
si-UBE2T#1	16.1±2.3	55.5±2.5	7.6±0.9	12.6±5.5	6.8±3.1
si-UBE2T#2	16.8±3.8	59.5±2.6	5.8±0.9	12.8±4.8	4.6±2.5

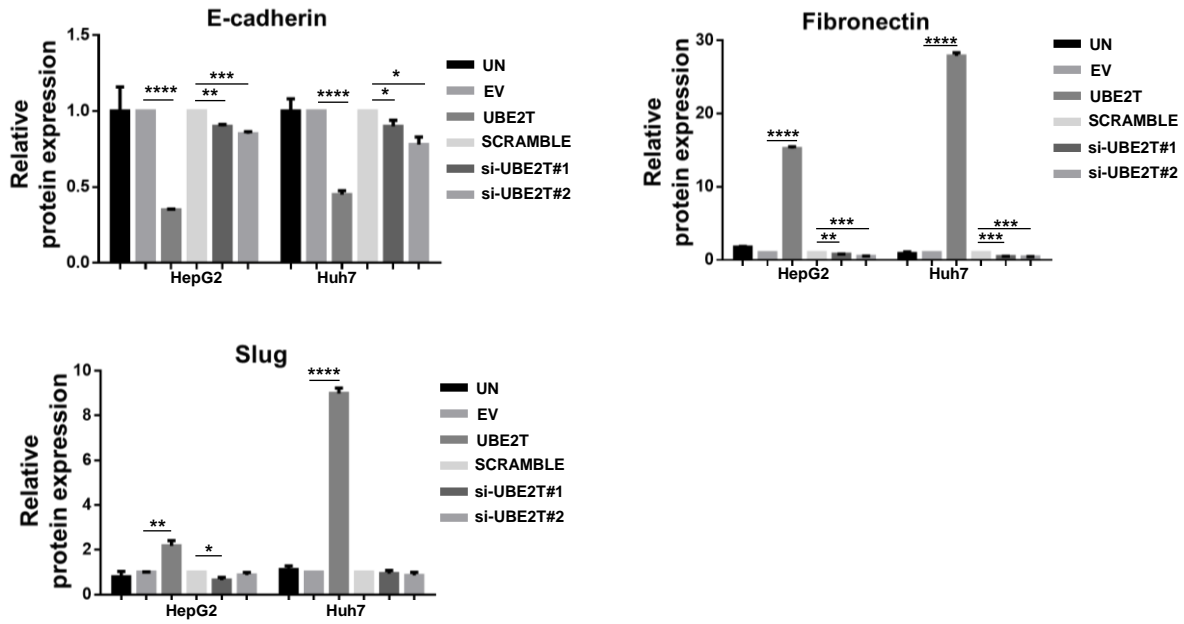
F



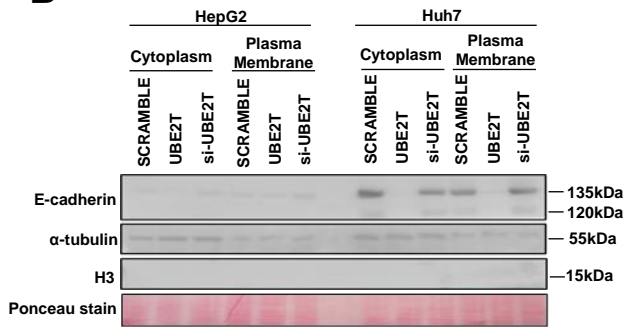
Treatment Group (HepG2)	Live (Pi-/Annexin V ⁻)	Early apoptotic (Pi-/Annexin V ⁺)	Late apoptotic (Pi ⁺ /Annexin V ⁻)	Necrotic (Pi ⁺ /Annexin V ⁺)
EV	99±0.5	1±0.05	0±0	0±0
UBE2T	99.5±0.1	0.5±0.02	0.1±0.002	0±0
si-UBE2T	99.8±0.1	0.05±0.01	0±0	0±0
etoposide	89±0.3	9±0.2	1±0.2	1±0.5
Treatment Group (Huh7)				
EV	94±0.9	6±0.3	0±0	0±0
UBE2T	85±1.1	10±0.2	2±0.2	2±0.3
si-UBE2T	99.9±0.2	0.1±0.01	0±0	0.1±0.05
etoposide	75±2	17±1	5±0.5	2.5±0.4

Figure S2.

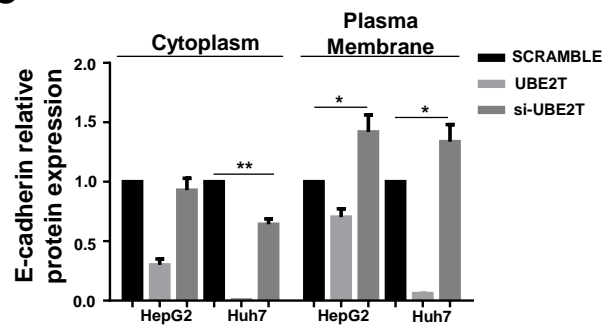
A



B



C



D

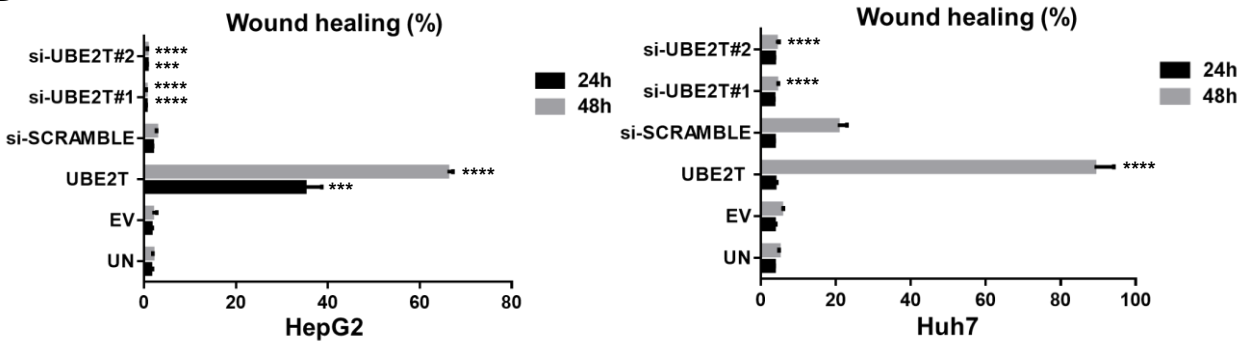


Figure S3.

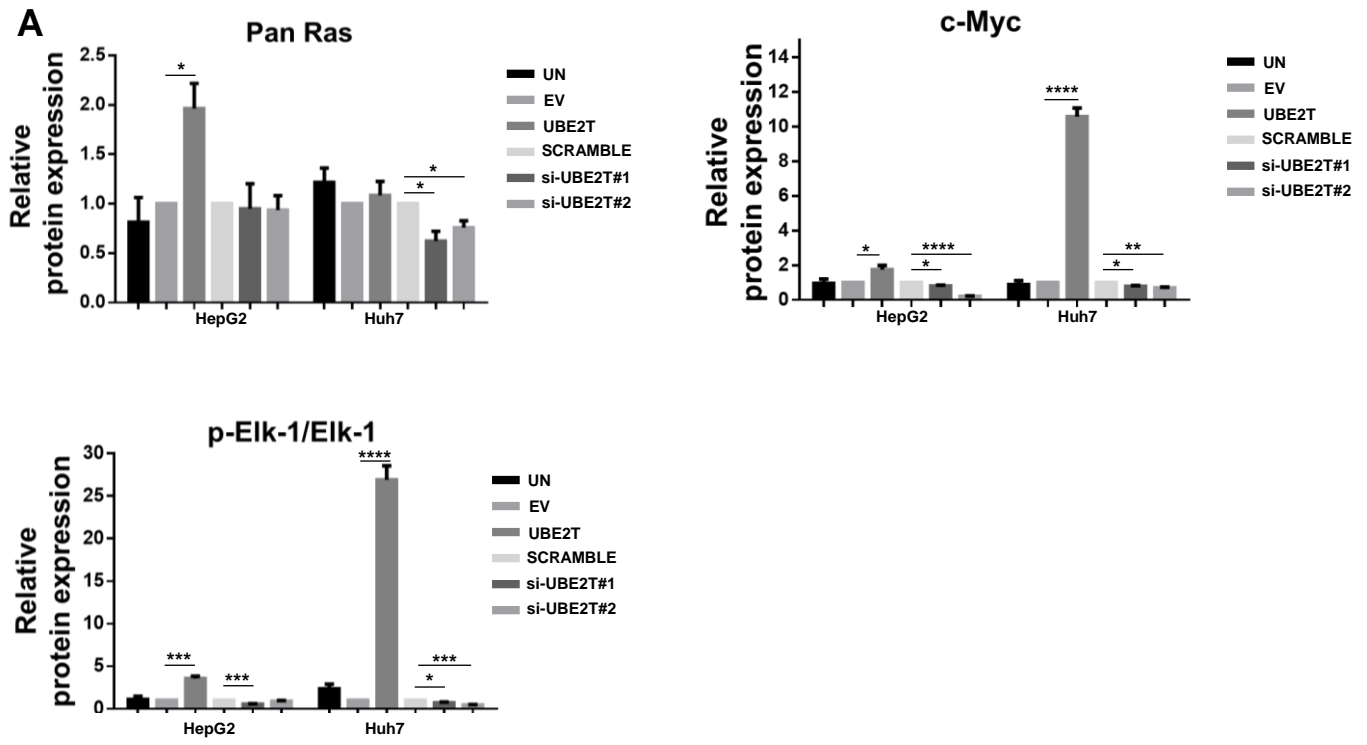


Figure S4.

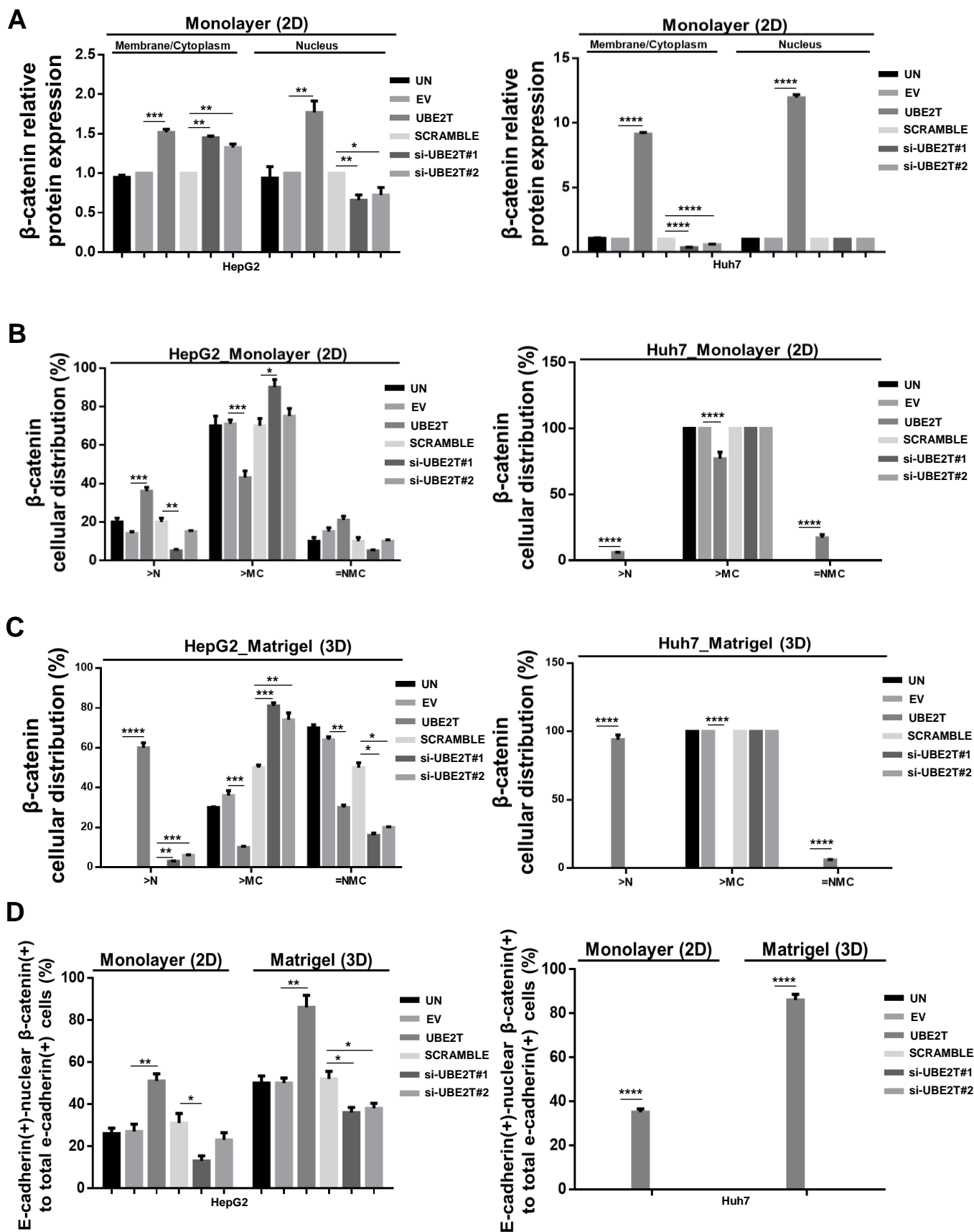
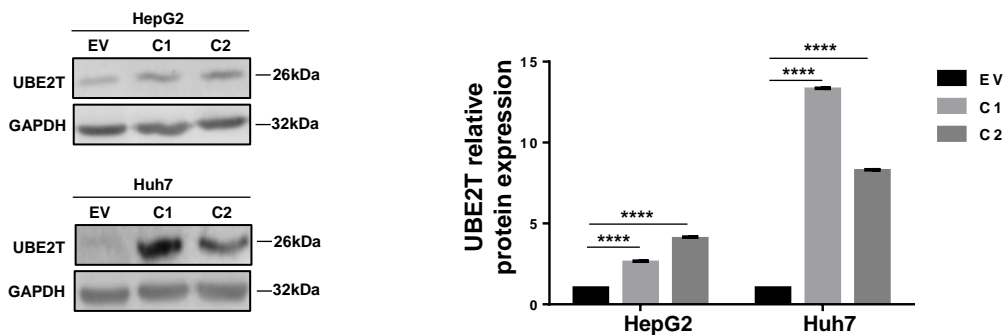


Figure S5.

A



B

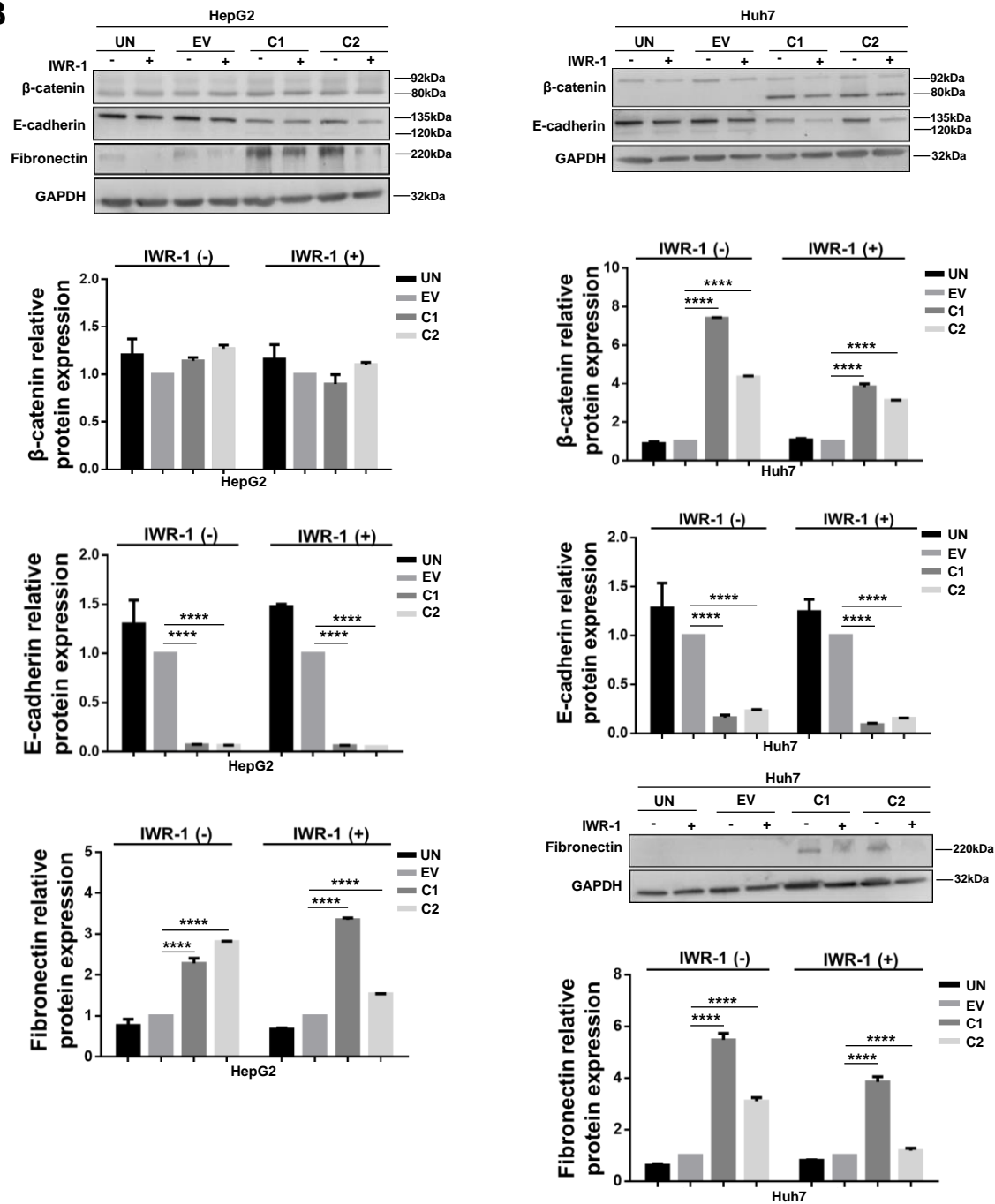


Figure S5.

C

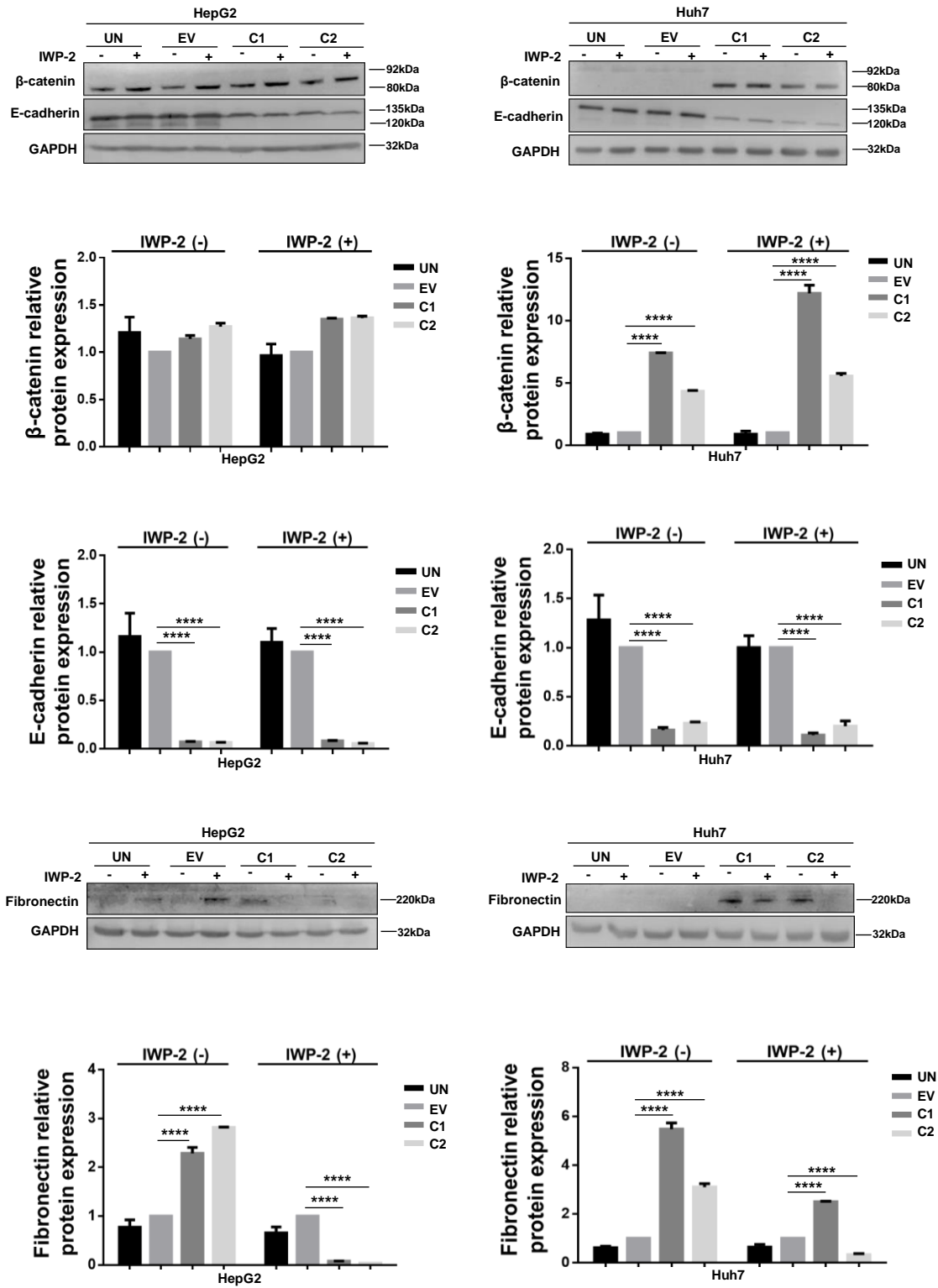


Figure S5.

D

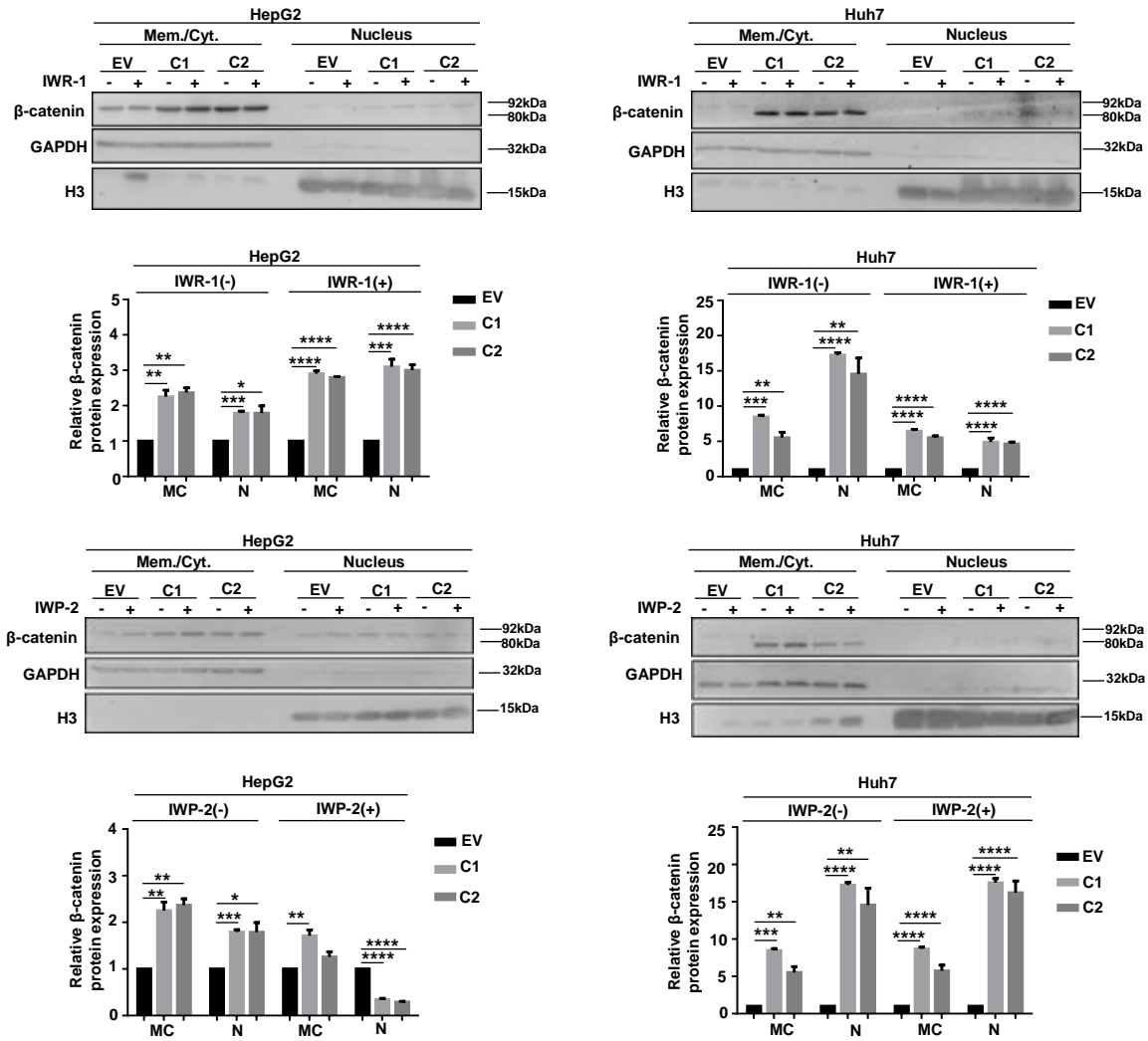


Figure S5.

E

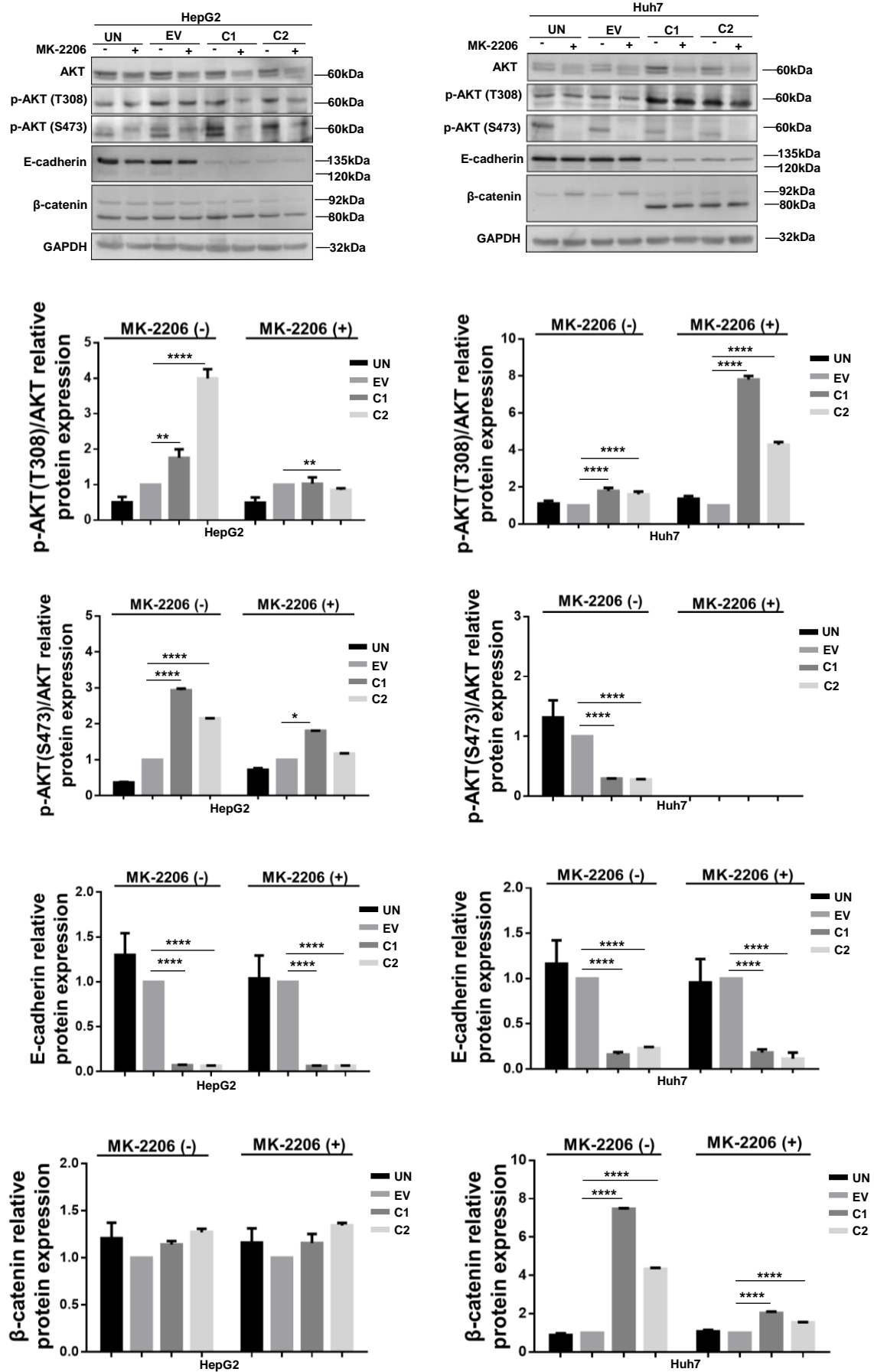
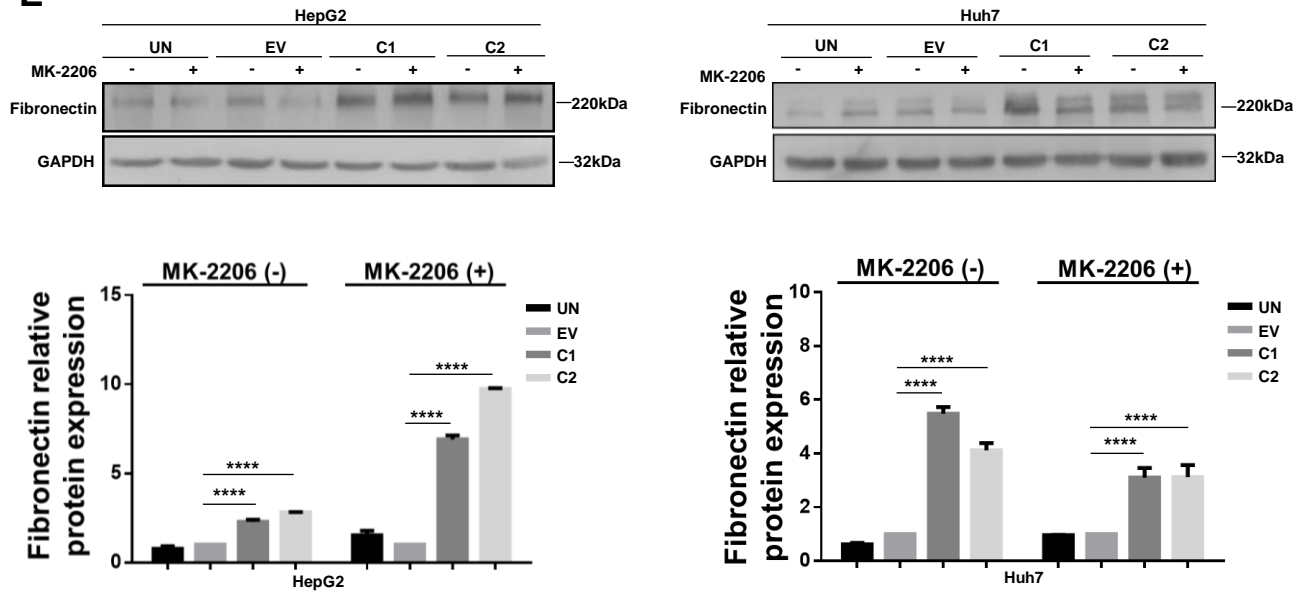


Figure S5.

E



F

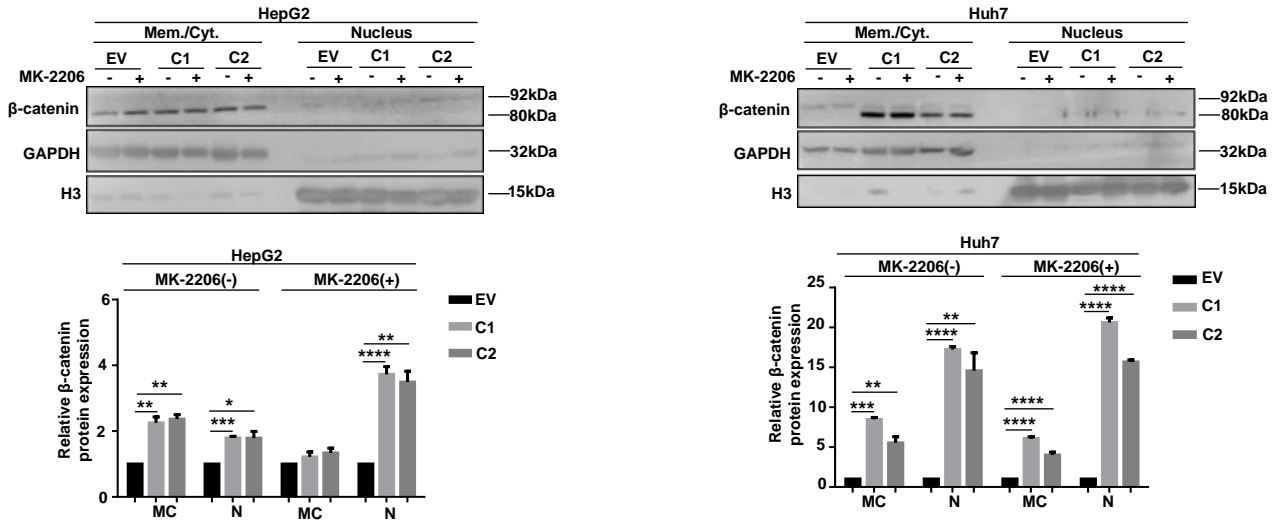


Figure S6.

A

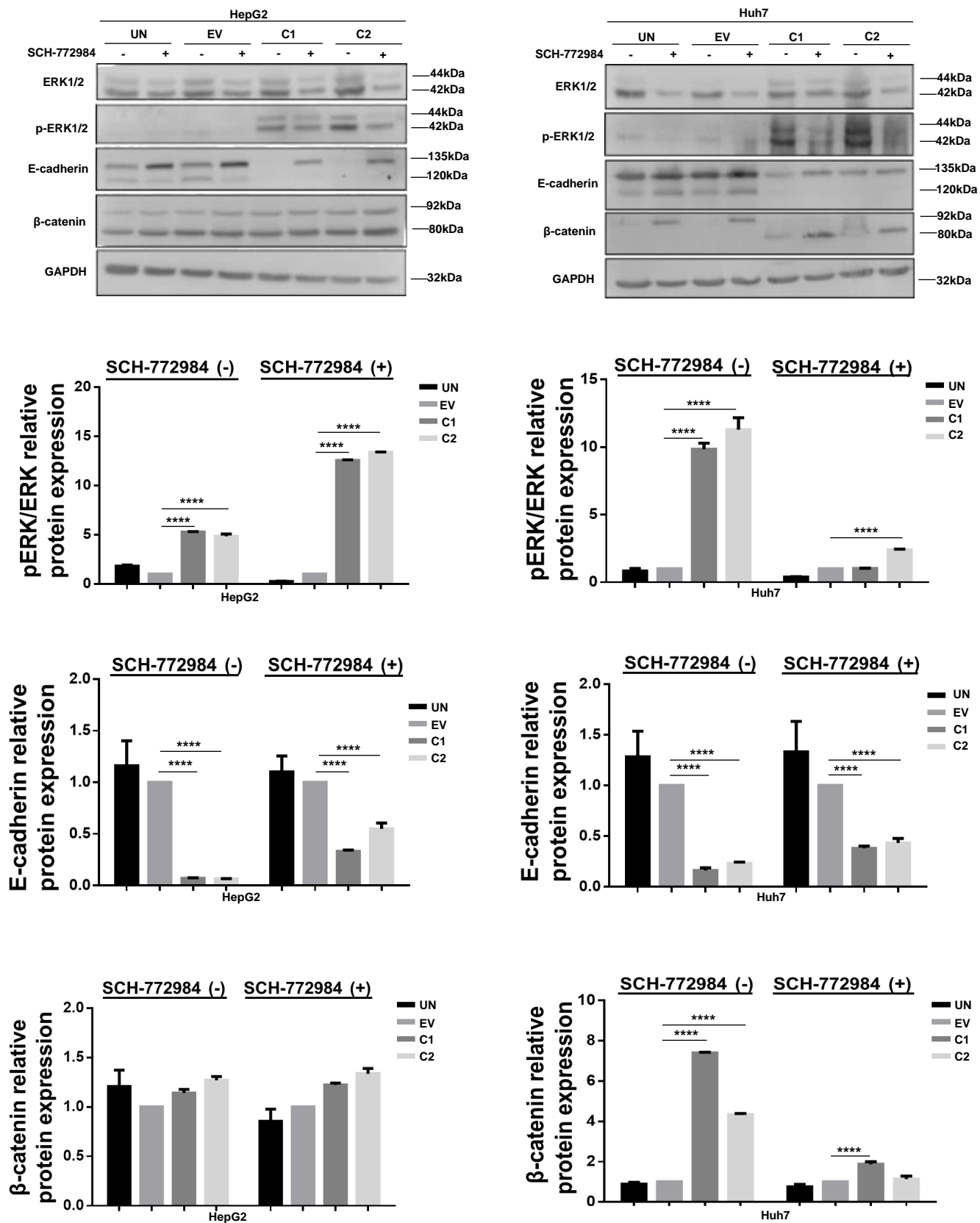


Figure S6.

